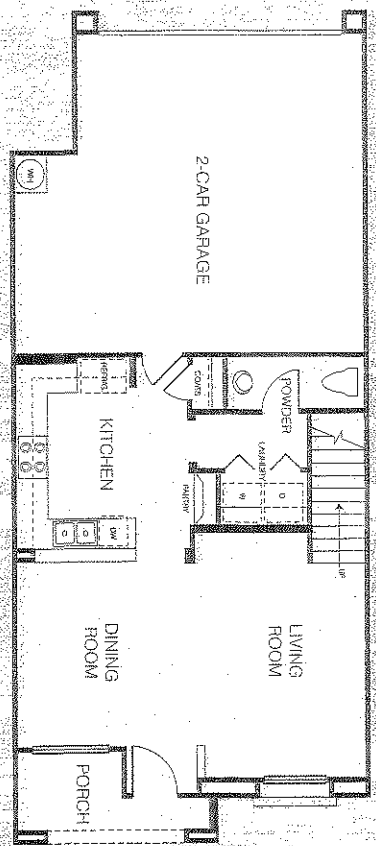
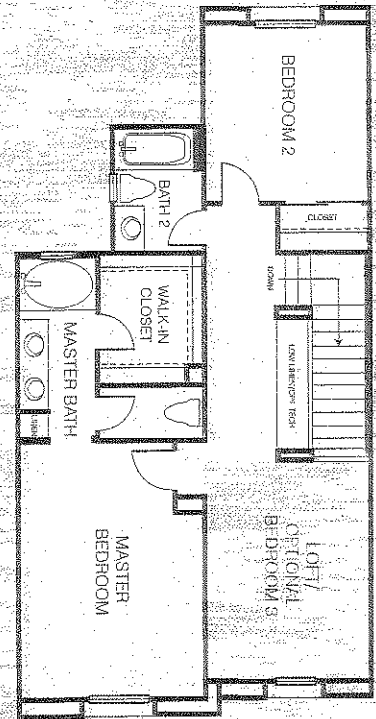


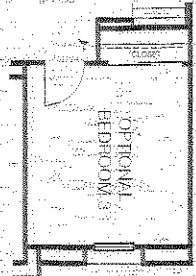
Two Story ~ 2 Bedrooms + loft ~ 2 1/2 Baths ~ 2 Car Garage ~ 1,478 sq. ft.



First story

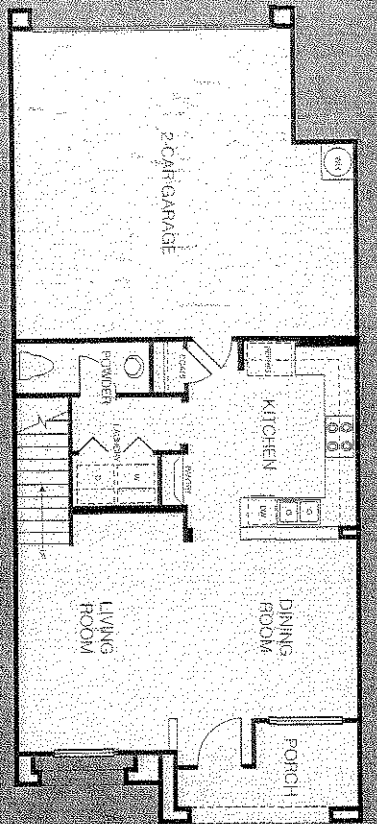


Second story

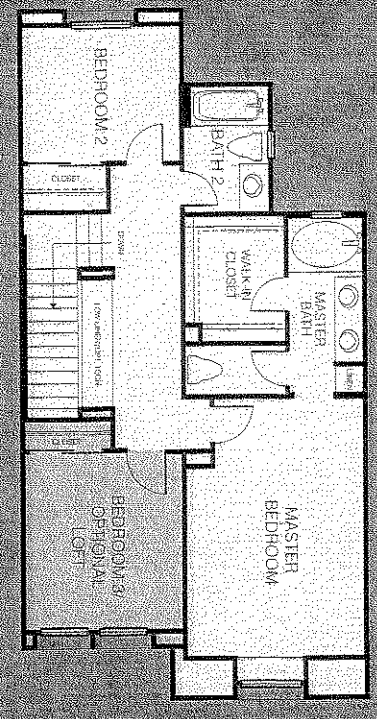


Options

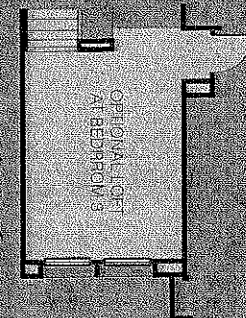
Two Story ~ 3 Bedrooms ~ 2 1/2 Baths ~ 2 Car Garage ~ 1,456-1476 sq. ft.



First story

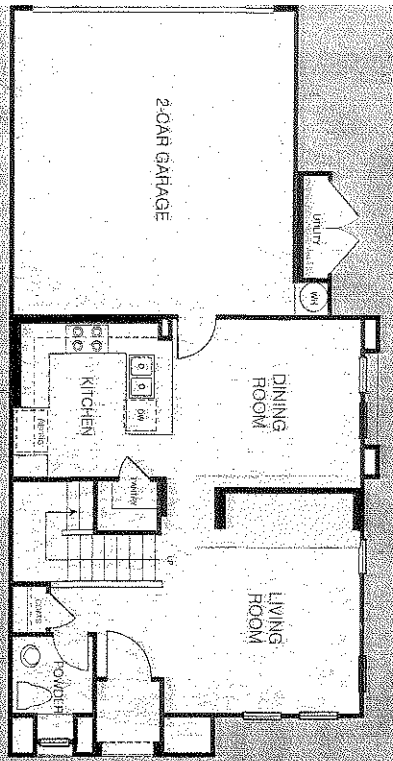


Second story

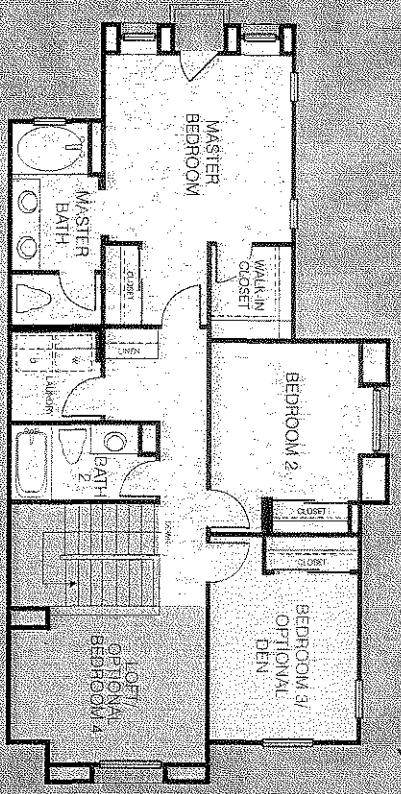


Options

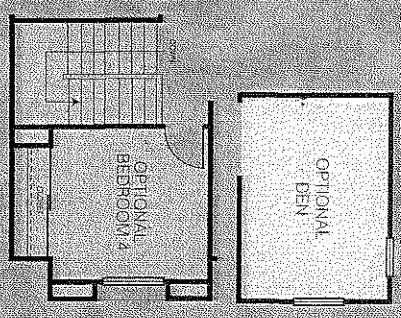
Two Story ~ 3 Bedrooms + loft ~ 2 1/2 Baths ~ 2 Car Garage ~ 1,563 sq. ft.



First story

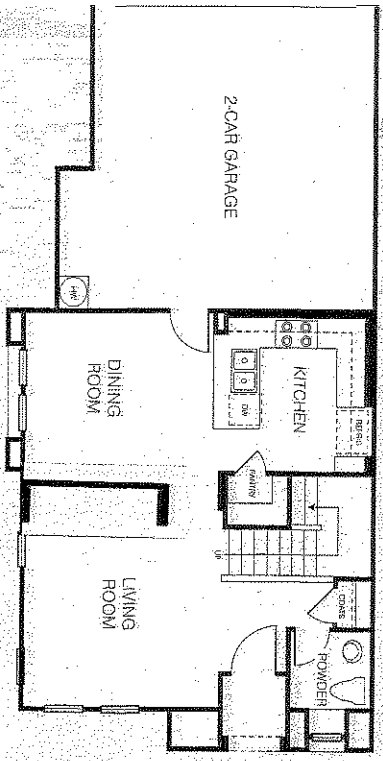


Second story

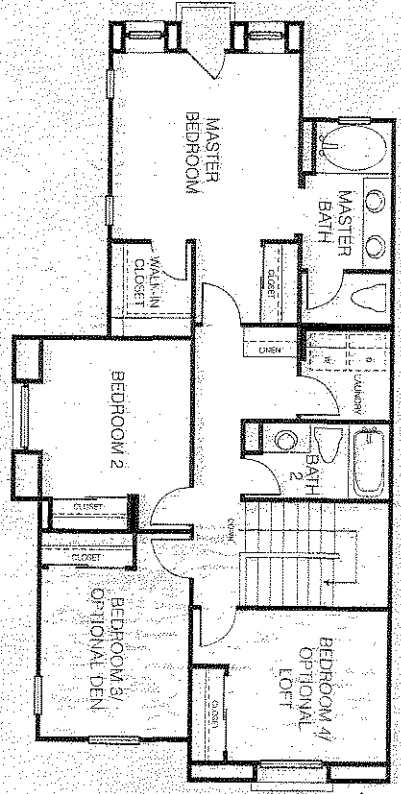


Options

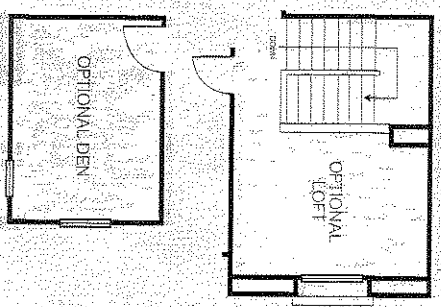
Two Story ~ 4 Bedrooms ~ 2 1/2 Baths ~ 2 Car Garage ~ 1,572 sq. ft.



First story



Second story



Options

Site map



Site map is preliminary artists' conception, is not to scale and may vary.

features

*Details designed for living well.
The essential elements that give your home substance and style.*

a bold exterior ARCHITECTURE REMINISCENT OF EARLY CALIFORNIA INSPIRES THE GRAND NAME MATERIALS, COLOR AND STYLE
INTEGRATED INTO EACH HOME > Designer selected exterior color palettes > Frazee paints highlight architectural details > La Habra stucco - hand applied lace texture finish > Eagle Roof concrete tiles > Six panel Thorma Tru entry doors > Sectional insulated steel roll-up garage doors > Garage door openers and remote controls

a solid build MATERIALS THAT SUPPORT, FRAME, AND COVER YOUR HOME WITH CRAFTSMANSHIP, VALUE AND INTEGRITY
> Post-tensioned foundation > Engineered wood second story truss joist systems > Copper plumbing > Interior smoke detectors

distinctive kitchens DESIGNED FOR MAXIMUM EFFICIENCY USING THE FINEST INGREDIENTS INCLUDING STATE-OF-THE-ART APPLIANCES AND DURABLE, STYLISH CABINETRY > Granite slab countertops in your choice of beautiful colors > Whirlpool appliances in black or white featuring 30" sealed glass 4-burner cooktop, 30" single oven with Accubake feature, Whirlpool microwave and dishwasher > Beech cabinetry w/warm mocha stain > Dual compartment white cast iron sink w/ Moen chrome faucets

masterful details PLENTY OF ROOM TO RELAX IN THESE BEAUTIFUL AND COMFORTABLE SPACES > Handset 6" x 6" ceramic tile countertops and oval tub & shower combinations with 6" x 6" white ceramic tile surround at master bath > Moen chrome faucets and shower control > Decora switches > Mouldings and raised panel doors > Walk-in closets > Stylish white handrail, post, and baluster stair system > Structured wiring package featuring category 5 phone wiring and RG-6 cable wiring

make it your own UPGRADES TO REFLECT YOUR VISION OF HOME > Upgraded flooring, cabinetry and appliances > Kitchen countertop choices of upgraded granite > Master bath tile or granite upgrades > Surface mounted surround sound systems > Select Frazee interior paint and trim upgrades > Framed mirrors

In our continuous effort to improve our communities, Standard Pacific Homes reserves the right to change maps, phase layouts, floorplans, specifications, materials, and included features, options and pricing without prior notice. All maps, plans, landscaping, brochures, renderings are artists conception and are not intended to be actual depictions or to scale. Exterior renderings are an artists impression and are not meant to represent home colors, trim details, window details, and patterns of exterior landscaping, hardscape, or upgrades/options. Square footages and dimensions are approximate. Windows, window locations, multi panes, balconies, garages, driveways, walkways, fencing, landscaping and walls, if included, and floorplan layouts will vary per plan, lot and elevation. The model homes will be a depiction of floorplans with options and features specific to the model homes that may or may not be available. Model homes show enhanced landscaping and hardscape which may or may not be available through the options program. Optional items may be included at an additional cost, subject to cut-off dates.