

Alta Mar

D. M. Highlands

Features

Information Deemed Accurate
But Not Guaranteed

Upon Entering

- Private entry courtyard (Plans 1, 2 & 4)
- Carved mahogany entry doors
- Decorative Schlage brass door hardware
- Formal entry with custom ceramic tile or wood parquet flooring

Once Inside

- Plush carpeting in choice of designer colors over $\frac{3}{16}$ " pad included in Living Room, Dining Room, Family Room, Master Suites, Dressing Areas, Secondary Bedrooms, Halls and Stairways
- Wood burning fireplace with gas log-lighter valve featuring Travertine marble hearth and face in Living Room and brick hearth and face in Family Room
- Custom hand-troweled ceiling treatments
- Dramatic skylight (Plan 2)
- Volume ceilings
- Distinctive, elegant lighting fixtures and architecturally specified recessed lighting
- Built-in wet bar with mirrors feature ceramic tile counter-top
- Secluded garden atrium (Plan 1)
- Decorative Schlage interior door hardware
- Sliding tempered glass doors to private outside areas
- Raised panel interior passage doors
- Detailed trim mouldings at doors

Into Gourmet Kitchens

- Hand-set ceramic tile counter-tops
- Oak-finished cabinetry
- Decorative plumbing hardware
- Jenn-Air electric cook-top
- Self-cleaning electric built-in single wall oven with black glass front

- Electronic touch control microwave oven with black glass front
- Dishwasher
- Refrigerator space equipped with water line for ice-maker
- Large storage pantry
- Luminous ceilings

Retreating to the Master Suite

- Wood-burning fireplace with gas log-lighter valve featuring Travertine marble hearth and face (Plans 3 & 5) or brick hearth and face (Plan 4)
- Large Master Bedroom Suites designed to include private sitting areas
- Private dressing areas
- Large wardrobe and/or walk-in closets feature mirrored wardrobe doors

Into the Master Bath

- Hand-set ceramic tile vanity tops
- Twin pullmans
- Decorative plumbing hardware
- Oak-finished cabinetry
- Oval tub with ceramic tile wainscot
- Shower with ceramic tile surrounds and safety glass enclosure

Interior Noteworthy

- Step-down living room (Plan 2)
- Secondary Bedrooms feature abundant wardrobe or walk-in closets
- Secondary Baths feature hand-set ceramic tile vanity tops, decorator selected hardware, oak-finished cabinetry and tub/shower with tile surrounds
- Interior laundry areas
- Oak-finished linen cabinets

- Oak-finished hand railings
- Thermostatically controlled forced-air heating
- Prepared for optional air conditioning
- Pre-wired for cable TV and telephone
- Smoke detector with warning buzzer
- Full insulation of exterior walls and ceilings
- 220-V. and gas service for clothes dryer
- Weatherstripping on exterior doors

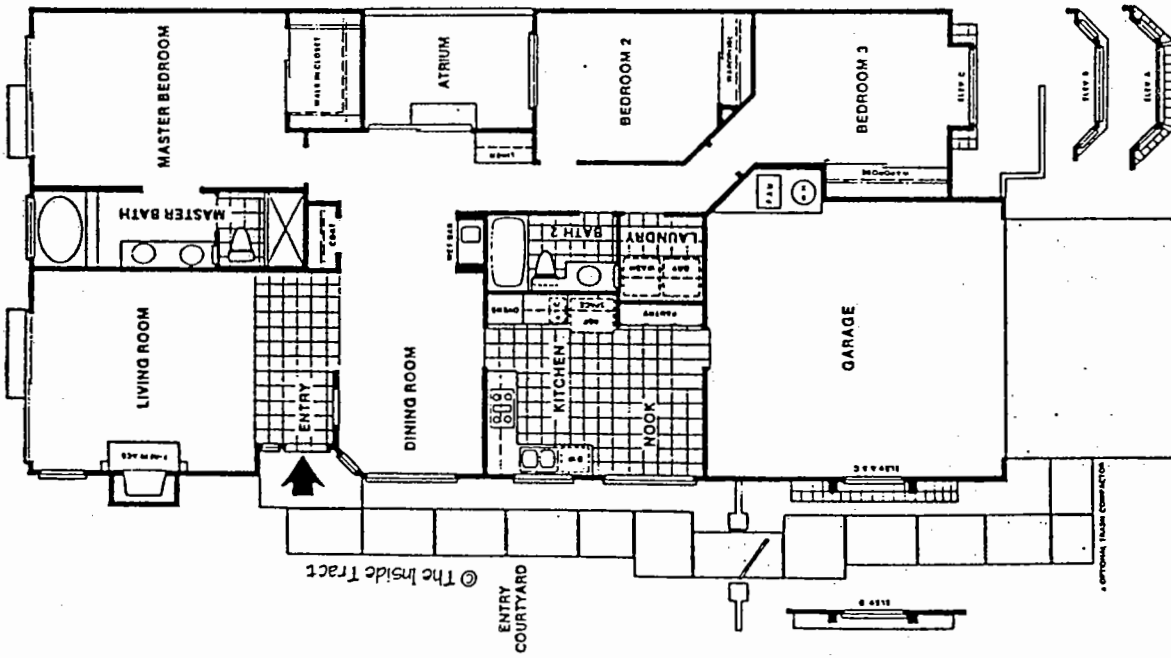
Exterior Detailing

- Architecturally specified exterior color palette
- Concrete Spanish-style barrel roofs
- Automatic garage door openers with two controls
- Concrete walks and driveways
- Weatherproof exterior electrical outlets
- Exterior gas line for barbecue
- Rear and side yard fencing
- Front yard seeded with one tree planted

Options

- Upgrade carpet & pad © The Inside Tract
- Upgrade entry materials
- Mirrored wardrobe doors
- Trash compactor
- Air-conditioning

ALTA MAR D.M. HIGHLANDS



© The Inside Tract

ENTRY COURTYARD

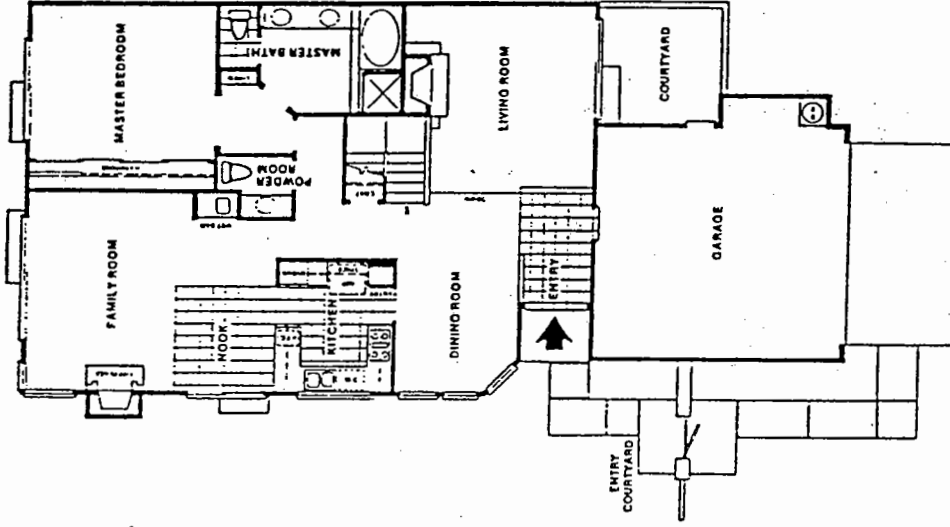
ALTA MAR D.M. HIGHLANDS

Model: PLAN 1

Area: EDM B/T Code: AM

Approx SQ/FT: 1605

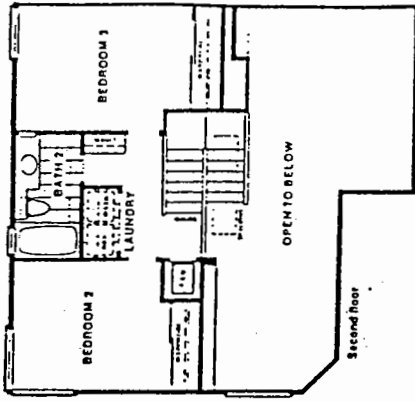
©The Inside Tract



© The Inside Tract

First floor

OPTIONAL TUBS CONNECTION



Second floor

OPEN TO BELOW

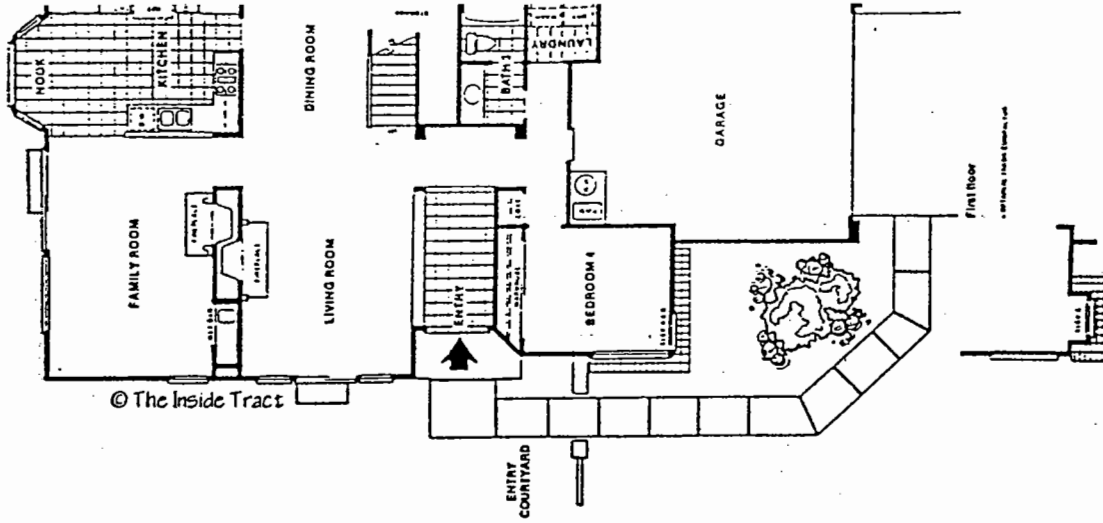
ALTA MAR D.M. HIGHLANDS

Model: PLAN 2

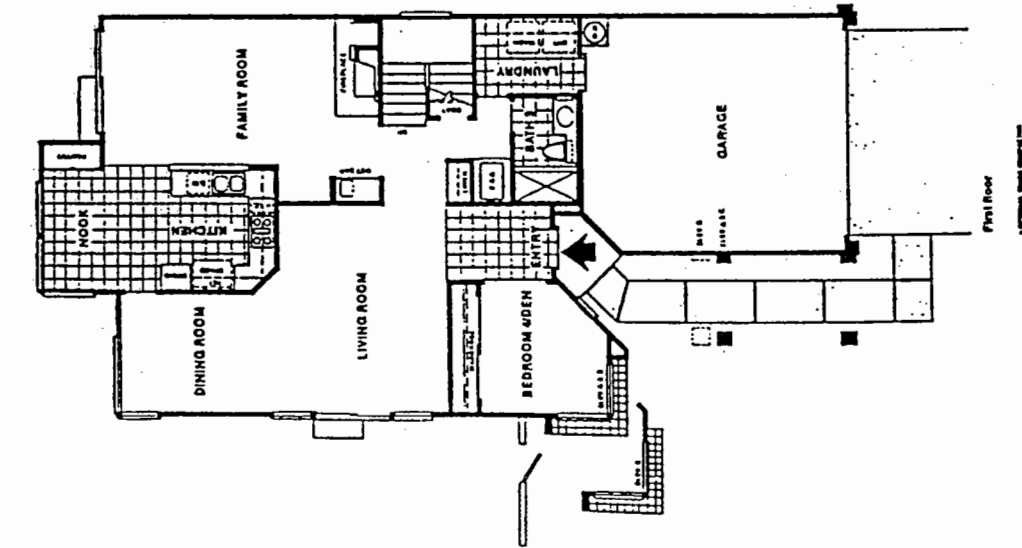
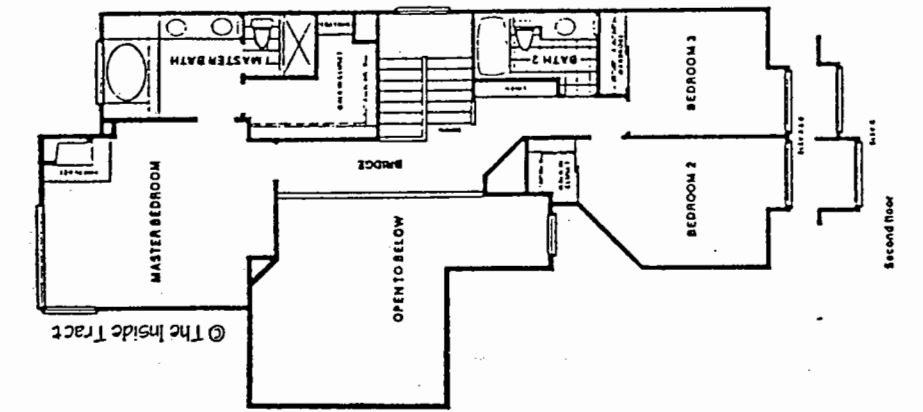
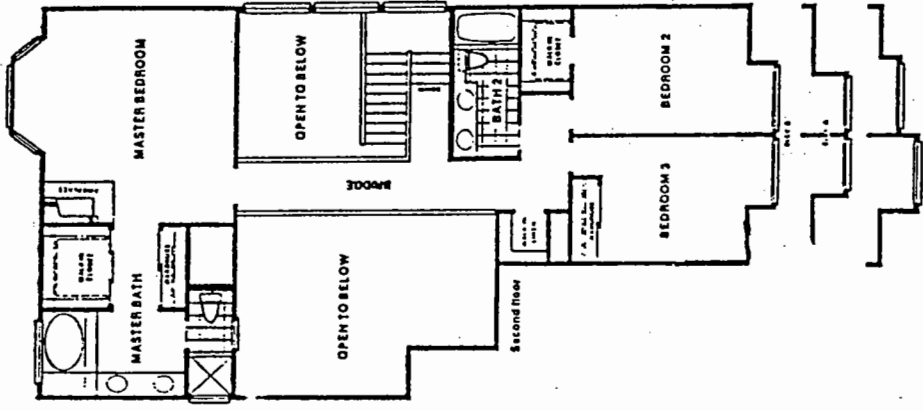
Area: EDM B/T Code: AM

Approx SQ/FT: 1909

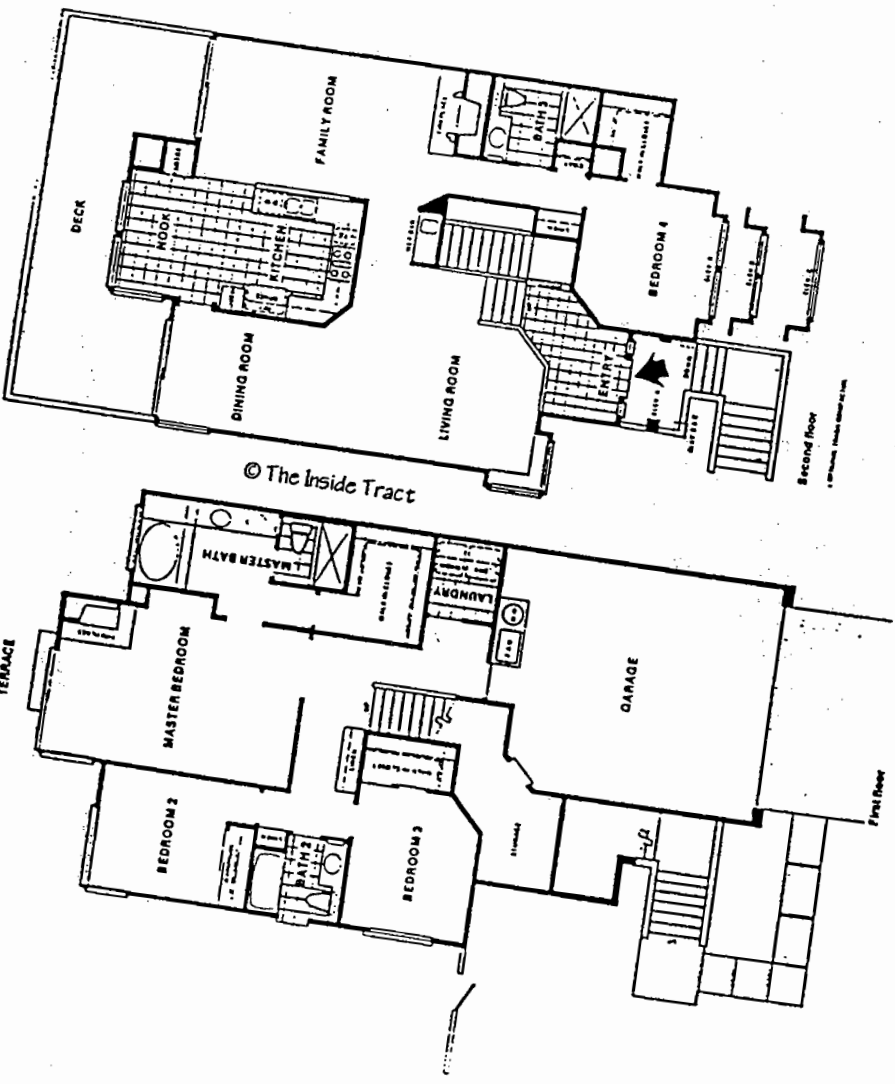
©The Inside Tract



ALTA MAR D.M. HIGHLANDS
 Model: PLAN 4
 Area: EDM B/T Code: AM
 Approx SQ/FT: 2489
 ©The Inside Tract

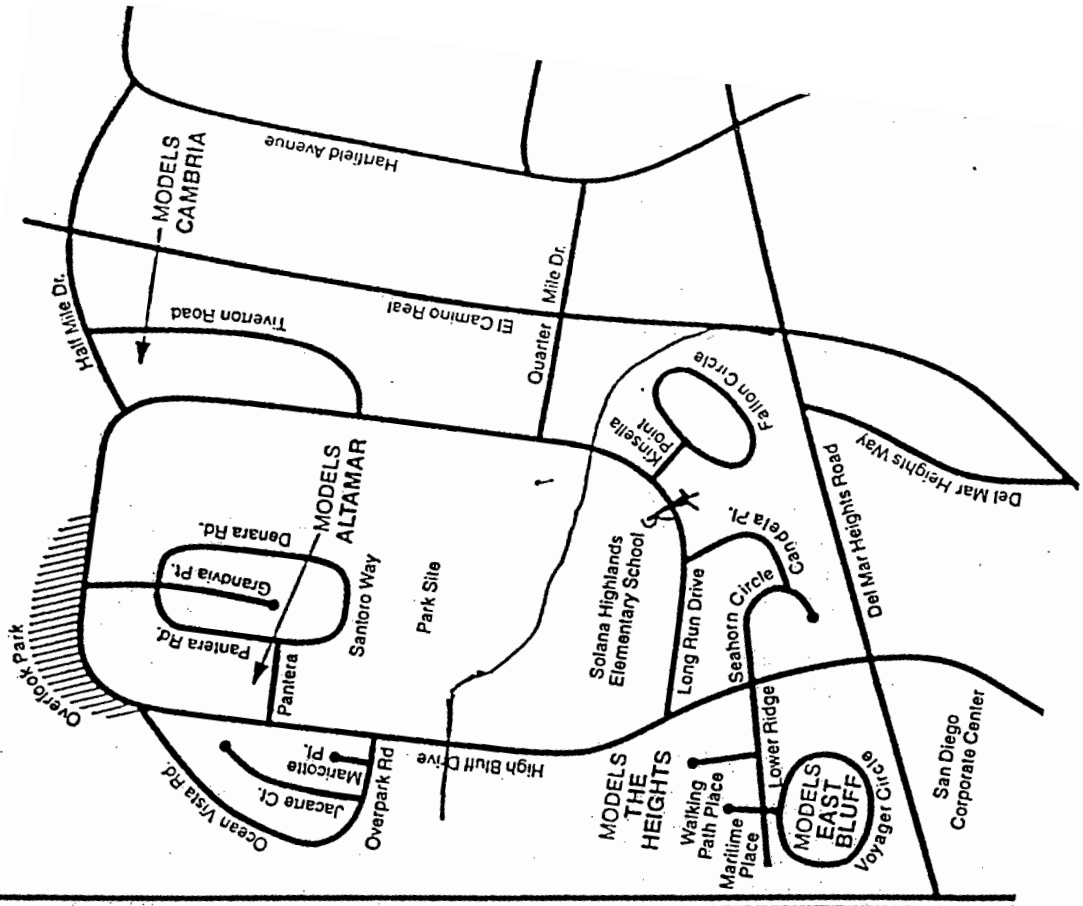


ALTA MAR D.M. HIGHLANDS
 Model: PLAN 3
 Area: EDM B/T Code: AM
 Approx SQ/FT: 2301
 ©The Inside Tract



ALTA MAR D.M. HIGHLANDS
 Model: PLAN 5
 Area: EDM B/T Code: AM
 Approx SQ/FT: 2229
 ©The Inside Tract

1-5



ALTAMAR - DM HIGHLANDS

Site Plan - B/T: ADH
 Caution: There may be additions or changes to these site plans