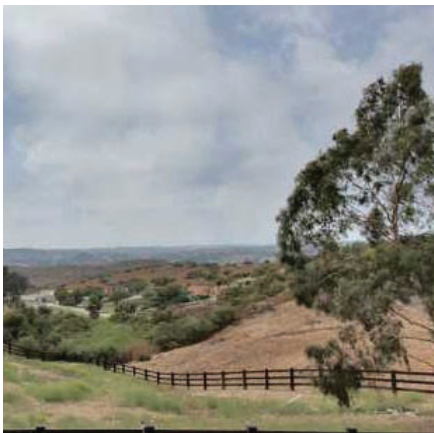


Community Information

Bonsall





Bonsall

Bonsall is located in the rolling foothills of North San Diego County on Hwy 76.

The community was begun after John Bonsall, a Methodist minister, was hauling lumber through Gopher Canyon more than a century ago and was struck by the beauty of the place. He built a house and planted a fruit orchard in 1879. The town was first known as Mount Fairview. It has been acclaimed by many as one of the most unique communities in Southern California.

Residents have easy access to I-15, is located twelve (12) miles from the Pacific Ocean and situated along the beautiful San Luis Rey River on approximately 32 square miles. With a population of only 10,000 people, its rural, equestrian, small town charm, cool summers and mild winters have turned many passer-by travelers into full-time residents.

This unique community offers an unmatched package of amenities: five golf and tennis country clubs within 10 minutes of the town, award winning, state-of-the-art schools, along with a variety of business, shopping and dining opportunities. These amenities are accented by an abundance of rolling hills, expansive views, fresh air and blue skies—all within an hour's drive of metropolitan San Diego, as well as nearby Orange and Riverside Counties.

Our Chamber

The Bonsall Chamber of Commerce was established on December 10, 1990 to advance the general welfare and prosperity of the Bonsall Area so that its citizens and all areas of its business community shall prosper.

Nearby Cities

Bonsall is located approximately 45 minutes from downtown San Diego,
1 hour to Orange County
1.5 hours to Palm Springs,
and 2 hours to Los Angeles/Beverly Hills.

Airports

Bonsall is located 20 minutes from the Palomar Airport (commuter);
45 minutes from the San Diego International Airport (Lindberg Field);
1 hour from John Wayne Airport (Orange County);
1 hour from Ontario International Airport;
2 hours to Los Angeles International Airport.
Fallbrook Airpark (10 minutes) and Oceanside Airport (20 minutes).

Shopping

Neighborhood shops, restaurants, and grocery stores are within 5 minutes. Major shopping malls are accessible within 25 minutes.



Equestrian

Several horse-boarding and equestrian-related facilities lie within the greater Bonsall area, including the famed San Luis Rey Downs Thoroughbred Training Center.

Pacific Ocean Beaches

Located 15 miles west within approximately 20 minutes driving.

Golf Courses

Bonsall is located close to 20 golf courses:

- American Golf (public), 15 min.
- Aviara Golf Course (public), 35 min.
- Bear Creek Golf & Country Club (private), 35 min.
- Castle Creek Country Club (public), 5 min.
- Center City (public), 15 min.
- Eagle Crest Golf Club (public), 20 min.
- El Camino Country Club ((private), 15 min.
- Emerald Isle Golf Club (public), 15 min.
- Fallbrook Golf Club (public), 5 min.
- La Costa Resort & Spa (public), 25 min.
- Lake San Marcos Executive Golf Course (public), 20 min.
- Lake San Marcos Country Club (private), 20 mins.
- Lawrence Welk Golf Resort (public), 5 min.
- Pala Mesa Resort (public/semi-private), 10 min.
- Pauma Valley Country Club (private), 30 min.
- Rancho California Golf Course (SCGA), 35 min.
- San Luis Rey Downs Golf Course (public), 5 min.
- Temecula Creek Golf Resort (public), 25 min.
- Twin Oaks Golf Course (public), 20 min.
- Vista Valley Country Club (private), 10 min.



Vineyards

The nearby ones are in Temecula which boasts nearly a dozen wineries including Callaway and Thornton.

Major Freeways

Bonsall is located 5 minutes from Interstate-15 and 20 minutes from Interstate-5.

Hospitals

Bonsall is located 10 minutes from Fallbrook Hospital and Acute Care Facility, 15 minutes from Tri-City Medical Center and 20 minutes from Palomar Medical Center.





San Diego County Sheriff Bonsall Storefront

EMERGENCY - 911

Phone(Public Line): (760) 724-0869

Message Phone/Fax: (760) 940-5260

Dispatch Phone: (760) 728-1113

FRONT COUNTER HOURS: 9 a.m. - 2 p.m.

5256 S. Mission Road, Suite 401

Bonsall, CA 92003

(At the River Village Shopping Center across from Jack-in-the-Box)

The Bonsall Storefront is a satellite office of the Sheriff's Fallbrook Substation. It is occupied by The Senior Sheriff Volunteers and used by the Patrol Deputies and Investigative Personnel.

CLUBS AND ORGANIZATIONS

Bonsall Woman's Club

www.bonsallwomensclub.org

P.O. Box 545, Bonsall, CA 92003 Phone: (760) 728-2028

Meeting: 1st Thursday of the month 10:00 a.m.

San Luis Rey Downs Banquet Room, 31474 Golf Club Drive, Bonsall, CA

Bonsall Rotary Club

P. O. Box 934, Bonsall, CA 92003

Phone: 760-758-0083

Meeting: Thursdays 7:30 - 9:00 a.m.

San Luis Rey Downs Golf Resort

31474 Golf Club Dr., Bonsall

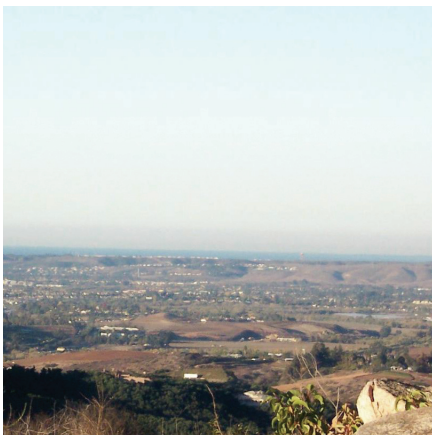
Bonsall Conservancy

The Bonsall Conservancy is a nonprofit organization supported by private donations and grants. The goal of the Bonsall Conservancy is to protect and preserve valuable environmental resources such as creeks, oak groves, scenic areas riparian and other habitat lands. www.bonsallconservancy.com

Bonsall Lions Club

It is with the deepest regret that the Bonsall Lions have concluded that they must disband their 49-year old service club. Time and social trends have so completely decimated their ranks that they feel they are no longer able to function effectively in the service of their beloved community.

Al Allgauer, President of the Bonsall Lions Club stated "we would like to thank the many people and organizations that helped us though the years. Without your support, we could not have given so much back to the community." He may be reached at (760) 451-9229.





Education

Bonsall Union School District

31555 Old River Road, Bonsall, CA 92003-5112
(760) 631-5200 / www.bonsallusd.com

Bonsall Elementary School (K-5)

31555 Old River Road, Bonsall, CA 92003 / (760) 631-5205

Bonsall West Elementary School

5050 El Mirlo Drive, Oceanside, CA 92057 / (760) 721-8001

Norman Sullivan Middle School (6-8)

7350 W. Lilac Rd., Bonsall, CA 92003 / (760) 631-5209

Vivian Banks Charter School (K-5)

11800 Pala Mission Road, Pala, CA 92059 / (760) 742-3300

Fallbrook Union High School District

2234 Stage Coach Lane, Fallbrook, CA 92028
(760) 723-6332 / www.fuhsd.net

Ivy High School (Alternative)

1056 Winterhaven Rd. Fallbrook, CA 92028

Phone: (760) 723-6395 / Fax: (760) 723-6392 / www.ivyhigh.org

Oasis High School (Independent Study)

2208 S. Stage Coach Lane, Fallbrook, CA 92028

Phone: (760) 723-1886 / Fax: (760) 723-6411 / www.oasishigh.org

Pala Satellite (High School - Alternative)



Colleges/Universities

Palomar Junior College

Mira Costa Junior College

San Diego State University

California State University

National University

Private Schools

Shepherd's Heart School

PO Box 1319, Bonsall, CA 92003-1319

Phone: 760-639-5464

Level: K - 12



Population and Housing Estimates

ZIP Code 92003



Jan 1, 2021

Total Population	4,469
Household Population	4,391
Group Quarters Population	78
Persons Per Household	2.63

Housing and Occupancy

	Total Units	Households	Vacancy Rate
Structure Type	1,867	1,670	10.6%
Single Family - Detached	1,253	1,103	12.0%
Single Family - Attached	305	271	11.1%
Multi-Family	309	296	4.2%
Mobile Home and Other	0	0	--

Household Income

Households by Income Category (2010 \$, adjusted for inflation)

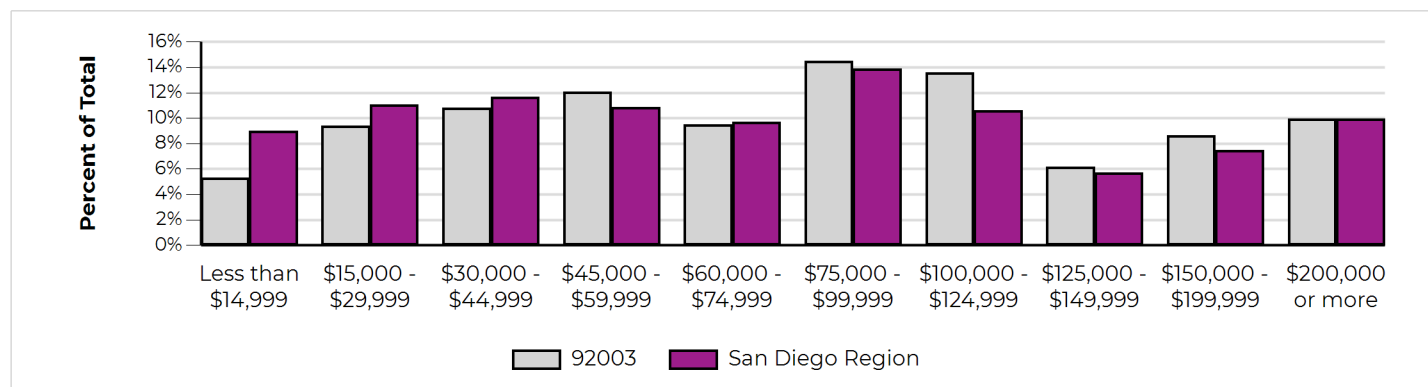
	Less than \$15,000	\$15,000- \$29,999	\$30,000- \$44,999	\$45,000- \$59,999	\$60,000- \$74,999	\$75,000- \$99,999	\$100,000- \$124,999	\$125,000- \$149,999	\$150,000- \$199,999	\$200,000 or more
% of Total	5%	9%	11%	12%	10%	14%	14%	6%	9%	10%

Median Household Income

2021

Adjusted for Inflation (2010 \$) \$79,855

Not adjusted for inflation (current 2020 \$) \$98,876



DATA SOURCES AND IMPORTANT ADVISORY:

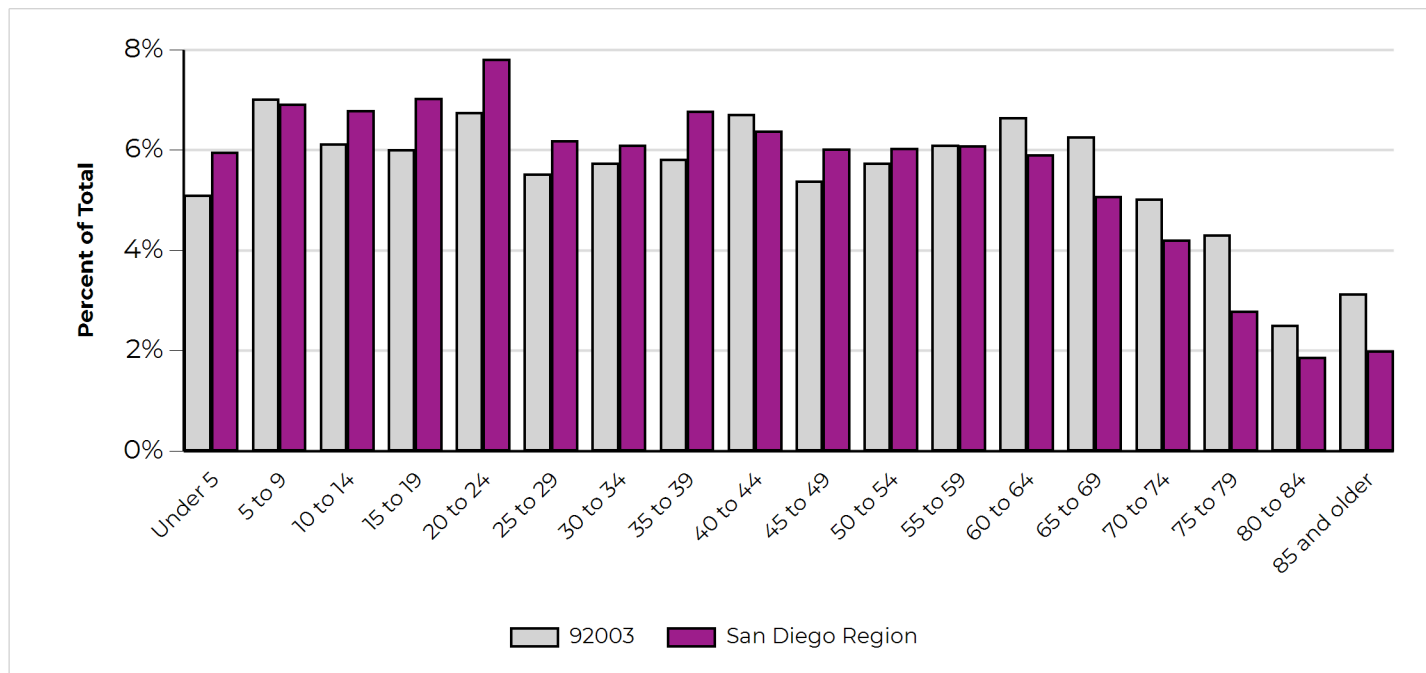
SANDAG Population and Housing Estimates are derived from a composite of data sources, including the California Department of Finance (DOF) E-5 Population and Housing Estimates for Cities, Counties, and the State, 2020-2022; the 2021 SANDAG Land Use and Housing Units inventory; the Census American Community Survey (ACS) Detailed tables; and the vintage 2020 DOF P-3 Race/Ethnicity and Sex by Age for California and Counties.

Caution should be taken when using Population and Housing Estimates, especially for small areas of geography. Sampling error inherent with the data may materially impact the reliability of the estimates, resulting in a substantial margin of error. Additionally, conclusions should not necessarily be drawn about small differences between two or more estimates because they may not reflect statistically significant differences.

Population by Age and Sex

	Total	Male	Female	Percent Female
Total Population	4,469	2,239	2,230	50%
Under 5	228	101	127	56%
5 to 9	314	161	153	49%
10 to 14	274	130	144	53%
15 to 17	157	76	81	52%
18 and 19	112	62	50	45%
20 to 24	302	174	128	42%
25 to 29	247	132	115	47%
30 to 34	257	150	107	42%
35 to 39	260	133	127	49%
40 to 44	300	154	146	49%
45 to 49	241	120	121	50%
50 to 54	257	122	135	53%
55 to 59	273	144	129	47%
60 and 61	139	67	72	52%
62 to 64	158	76	82	52%
65 to 69	280	135	145	52%
70 to 74	225	111	114	51%
75 to 79	193	87	106	55%
80 to 84	112	49	63	56%
85 and older	140	55	85	61%
Under 18	973	468	505	52%
65 and older	950	437	513	54%
Median Age	41.4	40.0	42.8	N/A

Population by Age



Population by Race, Ethnicity and Age

	Hispanic	Non-Hispanic				
		White	Black	American Indian	Asian & Pacific Isl.	All Other
Total Population	1,277	2,754	101	17	197	123
Under 5	100	99	8	3	9	9
5 to 9	146	152	4	0	5	7
10 to 14	123	134	3	0	5	9
15 to 17	70	66	2	1	7	11
18 and 19	41	58	5	1	5	2
20 to 24	109	153	9	2	13	16
25 to 29	102	116	19	1	2	7
30 to 34	89	141	9	0	7	11
35 to 39	85	150	4	0	14	7
40 to 44	81	182	6	0	21	10
45 to 49	82	122	6	3	22	6
50 to 54	60	167	4	1	14	11
55 to 59	47	203	8	1	10	4
60 and 61	15	111	1	0	9	3
62 to 64	31	120	1	1	4	1
65 to 69	40	222	3	3	9	3
70 to 74	20	183	4	0	15	3
75 to 79	19	158	3	0	12	1
80 to 84	9	90	2	0	10	1
85 and older	8	127	0	0	4	1
Under 18	439	451	17	4	26	36
65 and older	96	780	12	3	50	9
Median Age	27.4	50.1	30.3	45.8	47.4	30.2

Population and Housing Estimates

ZIP Code 92084



Jan 1, 2021

Total Population	49,072
Household Population	48,336
Group Quarters Population	736
Persons Per Household	3.11

Housing and Occupancy

	Total Units	Households	Vacancy Rate
Structure Type	16,007	15,534	3.0%
Single Family - Detached	9,834	9,489	3.5%
Single Family - Attached	1,336	1,303	2.5%
Multi-Family	3,951	3,869	2.1%
Mobile Home and Other	886	873	1.5%

Household Income

Households by Income Category (2010 \$, adjusted for inflation)

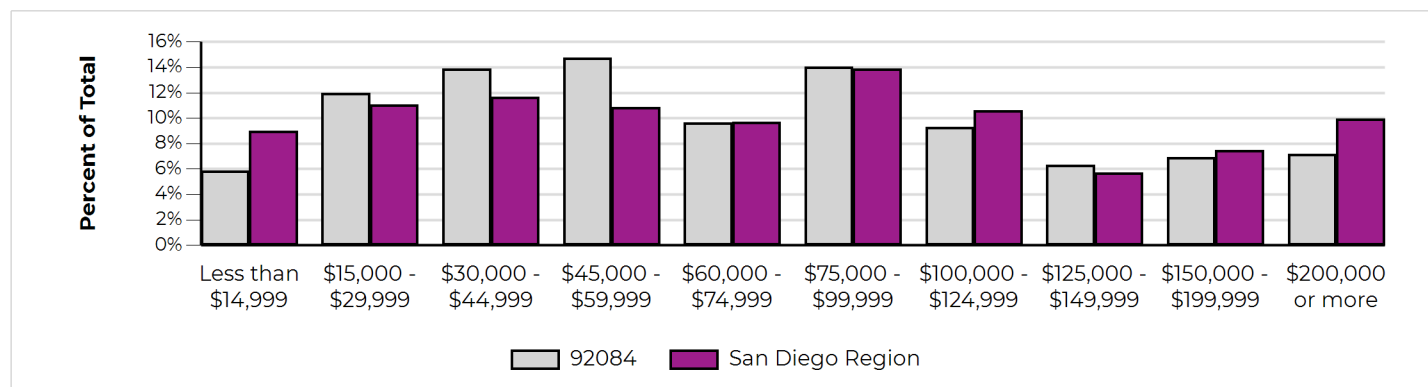
	Less than \$15,000	\$15,000- \$29,999	\$30,000- \$44,999	\$45,000- \$59,999	\$60,000- \$74,999	\$75,000- \$99,999	\$100,000- \$124,999	\$125,000- \$149,999	\$150,000- \$199,999	\$200,000 or more
% of Total	6%	12%	14%	15%	10%	14%	9%	6%	7%	7%

Median Household Income

2021

Adjusted for Inflation (2010 \$) \$65,387

Not adjusted for inflation (current 2020 \$) \$80,962



DATA SOURCES AND IMPORTANT ADVISORY:

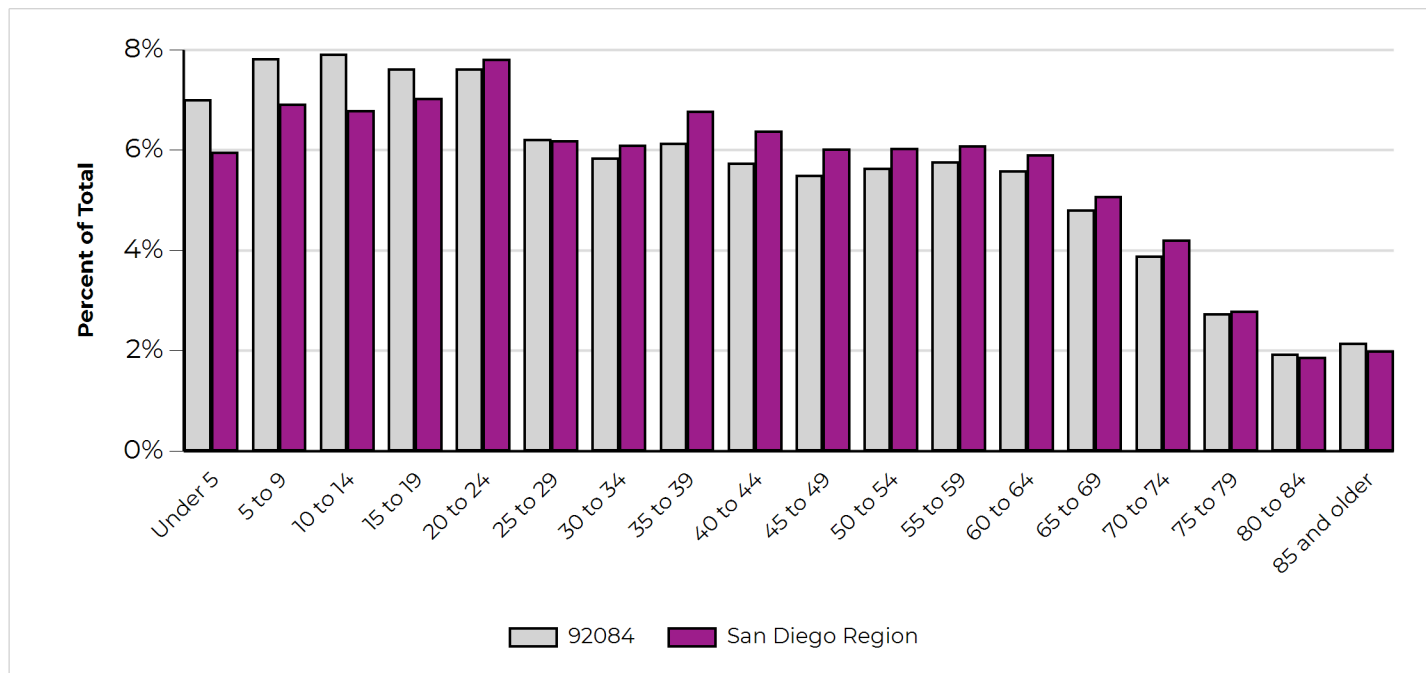
SANDAG Population and Housing Estimates are derived from a composite of data sources, including the California Department of Finance (DOF) E-5 Population and Housing Estimates for Cities, Counties, and the State, 2020-2022; the 2021 SANDAG Land Use and Housing Units inventory; the Census American Community Survey (ACS) Detailed tables; and the vintage 2020 DOF P-3 Race/Ethnicity and Sex by Age for California and Counties.

Caution should be taken when using Population and Housing Estimates, especially for small areas of geography. Sampling error inherent with the data may materially impact the reliability of the estimates, resulting in a substantial margin of error. Additionally, conclusions should not necessarily be drawn about small differences between two or more estimates because they may not reflect statistically significant differences.

Population by Age and Sex

	Total	Male	Female	Percent Female
Total Population	49,072	24,377	24,695	50%
Under 5	3,439	1,751	1,688	49%
5 to 9	3,841	1,915	1,926	50%
10 to 14	3,884	1,959	1,925	50%
15 to 17	2,365	1,231	1,134	48%
18 and 19	1,377	698	679	49%
20 to 24	3,740	2,022	1,718	46%
25 to 29	3,050	1,557	1,493	49%
30 to 34	2,868	1,477	1,391	49%
35 to 39	3,011	1,504	1,507	50%
40 to 44	2,816	1,430	1,386	49%
45 to 49	2,702	1,331	1,371	51%
50 to 54	2,771	1,396	1,375	50%
55 to 59	2,833	1,377	1,456	51%
60 and 61	1,085	508	577	53%
62 to 64	1,659	823	836	50%
65 to 69	2,364	1,104	1,260	53%
70 to 74	1,912	917	995	52%
75 to 79	1,346	603	743	55%
80 to 84	951	396	555	58%
85 and older	1,058	378	680	64%
Under 18	13,529	6,856	6,673	49%
65 and older	7,631	3,398	4,233	55%
Median Age	35.0	33.6	36.3	N/A

Population by Age



Population by Race, Ethnicity and Age

	Hispanic	Non-Hispanic				
		White	Black	American Indian	Asian & Pacific Isl.	All Other
Total Population	23,055	20,819	1,529	230	1,861	1,578
Under 5	1,769	1,290	107	11	82	180
5 to 9	2,211	1,244	128	23	92	143
10 to 14	2,117	1,308	134	16	108	201
15 to 17	1,399	691	70	11	54	140
18 and 19	702	491	68	7	33	76
20 to 24	2,238	1,091	104	14	140	153
25 to 29	1,763	977	88	22	89	111
30 to 34	1,511	1,044	100	18	99	96
35 to 39	1,523	1,177	113	7	104	87
40 to 44	1,423	1,093	82	15	125	78
45 to 49	1,391	1,020	76	7	138	70
50 to 54	1,314	1,158	89	18	139	53
55 to 59	1,088	1,475	88	15	120	47
60 and 61	350	620	42	1	53	19
62 to 64	491	999	51	9	88	21
65 to 69	633	1,485	65	10	122	49
70 to 74	447	1,304	41	15	88	17
75 to 79	270	953	37	6	61	19
80 to 84	220	637	24	2	61	7
85 and older	195	762	22	3	65	11
Under 18	7,496	4,533	439	61	336	664
65 and older	1,765	5,141	189	36	397	103
Median Age	28.1	45.0	33.3	33.1	45.2	21.6