

Community Information

Campo





Campo

Taken from the Spanish for "field," the area of Campo still features much of what earned it its name.

This remote and sparsely developed community along highway 94 was once known as New Texas because so many Texans tried to make a go of ranching here. The Indians called it Milquataj, for "big foot" or "wide valley."

With a population of approximately 1100, Campo Valley, including Cameron Corners, is still a pleasant rural community. Descendents of the Milquatay tribe, the original inhabitants of the valley, still live a ranch type life at the northwest portion of the valley.

The town is along the line of the former Southern Pacific Railway, originally San Diego and Arizona Railway.

Pacific Southwest Railway Museum

Main Facility & Train Rides Business Office:

Campo Depot

State Highway 94 & Forrest Gate Road

Campo, California

(619) 478-9937



Tribal areas

There are at least two tribal areas included in the nearby Campo Indian Reservation. One is about 1.5 miles due north of Campo and adjoining Cameron Corners. The reservation government is the Campo Band of Mission Indians of the Kumeyaay. Another tribal area is about seven miles east along State Route 94 in the Campo Valley. It extends nine miles to the north and beyond Interstate 8. The eastern portion of the reservation is about 4.75 miles in an east-west dimension and includes the community of Live Oak Springs.

Education

Mountain Empire Unified School District

3291 Buckman Springs Rd., Pine Valley, California 91962

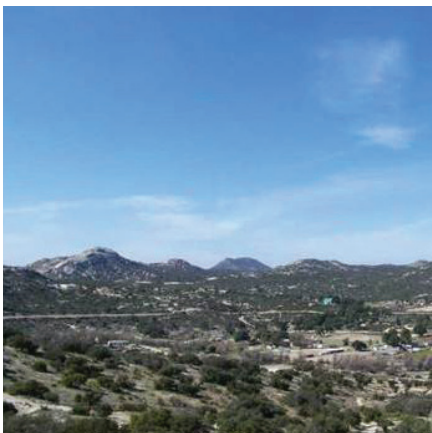
(619) 473-9022 Tel / (619) 473-9728 Fax

www.meusd.k12.ca.us

Campo Elementry School (1-7)

Campo Continuation (at the old Campo Elementry School)

Cottonwood Community Day (7-12)



Population and Housing Estimates

ZIP Code 91906



Jan 1, 2021

| | |
|------------------------------|--------------|
| Total Population | 3,633 |
| Household Population | 3,469 |
| Group Quarters Population | 164 |
| Persons Per Household | 2.77 |

Housing and Occupancy

| | Total Units | Households | Vacancy Rate |
|--------------------------|----------------|--------------|-----------------|
| Structure Type | 1,373 | 1,253 | 8.7% |
| Single Family - Detached | 1,266 | 1,157 | 8.6% |
| Single Family - Attached | 50 | 47 | 6.0% |
| Multi-Family | 12 | 9 | 25.0% |
| Mobile Home and Other | 45 | 40 | 11.1% |

Household Income

Households by Income Category (2010 \$, adjusted for inflation)

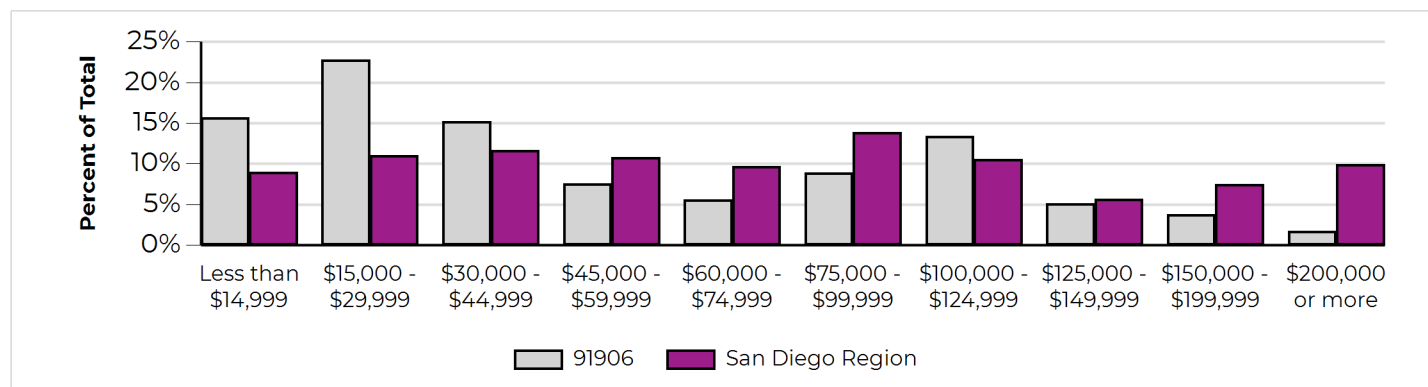
| | Less than \$15,000 | \$15,000- \$29,999 | \$30,000- \$44,999 | \$45,000- \$59,999 | \$60,000- \$74,999 | \$75,000- \$99,999 | \$100,000- \$124,999 | \$125,000- \$149,999 | \$150,000- \$199,999 | \$200,000 or more |
|------------|-----------------------|-----------------------|-----------------------|-----------------------|-----------------------|-----------------------|-------------------------|-------------------------|-------------------------|----------------------|
| % of Total | 16% | 23% | 15% | 8% | 6% | 9% | 13% | 5% | 4% | 2% |

Median Household Income

2021

Adjusted for Inflation (2010 \$) \$41,270

Not adjusted for inflation (current 2020 \$) \$51,100



DATA SOURCES AND IMPORTANT ADVISORY:

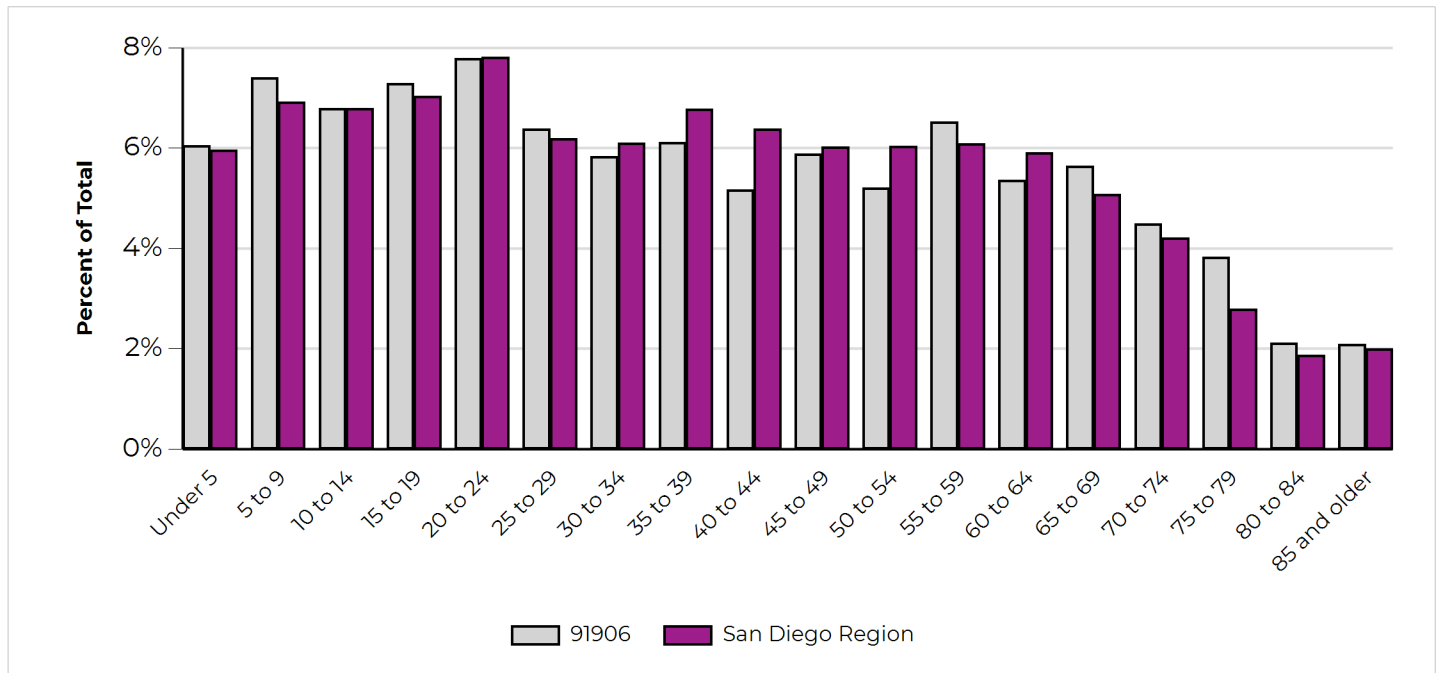
SANDAG Population and Housing Estimates are derived from a composite of data sources, including the California Department of Finance (DOF) E-5 Population and Housing Estimates for Cities, Counties, and the State, 2020-2022; the 2021 SANDAG Land Use and Housing Units inventory; the Census American Community Survey (ACS) Detailed tables; and the vintage 2020 DOF P-3 Race/Ethnicity and Sex by Age for California and Counties.

Caution should be taken when using Population and Housing Estimates, especially for small areas of geography. Sampling error inherent with the data may materially impact the reliability of the estimates, resulting in a substantial margin of error. Additionally, conclusions should not necessarily be drawn about small differences between two or more estimates because they may not reflect statistically significant differences.

Population by Age and Sex

| | Total | Male | Female | Percent Female |
|-------------------------|--------------|--------------|--------------|----------------|
| Total Population | 3,633 | 1,849 | 1,784 | 49% |
| Under 5 | 220 | 110 | 110 | 50% |
| 5 to 9 | 269 | 136 | 133 | 49% |
| 10 to 14 | 247 | 130 | 117 | 47% |
| 15 to 17 | 174 | 107 | 67 | 39% |
| 18 and 19 | 91 | 44 | 47 | 52% |
| 20 to 24 | 283 | 147 | 136 | 48% |
| 25 to 29 | 232 | 127 | 105 | 45% |
| 30 to 34 | 212 | 112 | 100 | 47% |
| 35 to 39 | 222 | 106 | 116 | 52% |
| 40 to 44 | 188 | 106 | 82 | 44% |
| 45 to 49 | 214 | 104 | 110 | 51% |
| 50 to 54 | 189 | 93 | 96 | 51% |
| 55 to 59 | 237 | 128 | 109 | 46% |
| 60 and 61 | 74 | 42 | 32 | 43% |
| 62 to 64 | 121 | 60 | 61 | 50% |
| 65 to 69 | 205 | 99 | 106 | 52% |
| 70 to 74 | 163 | 74 | 89 | 55% |
| 75 to 79 | 139 | 67 | 72 | 52% |
| 80 to 84 | 77 | 30 | 47 | 61% |
| 85 and older | 76 | 27 | 49 | 64% |
| Under 18 | 910 | 483 | 427 | 47% |
| 65 and older | 660 | 297 | 363 | 55% |
| Median Age | 37.0 | 35.5 | 38.3 | N/A |

Population by Age



Population by Race, Ethnicity and Age

| | Hispanic | Non-Hispanic | | | | |
|-------------------------|--------------|--------------|-----------|-----------------|----------------------|------------|
| | | White | Black | American Indian | Asian & Pacific Isl. | All Other |
| Total Population | 1,416 | 1,902 | 64 | 52 | 56 | 143 |
| Under 5 | 106 | 97 | 4 | 2 | 2 | 9 |
| 5 to 9 | 142 | 112 | 3 | 2 | 1 | 9 |
| 10 to 14 | 109 | 110 | 7 | 1 | 1 | 19 |
| 15 to 17 | 101 | 59 | 4 | 1 | 1 | 8 |
| 18 and 19 | 41 | 43 | 2 | 0 | 3 | 2 |
| 20 to 24 | 135 | 121 | 5 | 0 | 6 | 16 |
| 25 to 29 | 115 | 101 | 3 | 5 | 0 | 8 |
| 30 to 34 | 96 | 100 | 3 | 6 | 0 | 7 |
| 35 to 39 | 87 | 108 | 7 | 4 | 2 | 14 |
| 40 to 44 | 72 | 93 | 3 | 7 | 4 | 9 |
| 45 to 49 | 87 | 100 | 3 | 1 | 11 | 12 |
| 50 to 54 | 83 | 88 | 6 | 2 | 3 | 7 |
| 55 to 59 | 61 | 157 | 2 | 6 | 4 | 7 |
| 60 and 61 | 14 | 54 | 2 | 1 | 2 | 1 |
| 62 to 64 | 22 | 88 | 2 | 5 | 0 | 4 |
| 65 to 69 | 40 | 151 | 2 | 3 | 5 | 4 |
| 70 to 74 | 37 | 116 | 2 | 2 | 2 | 4 |
| 75 to 79 | 27 | 104 | 1 | 1 | 4 | 2 |
| 80 to 84 | 21 | 52 | 1 | 1 | 1 | 1 |
| 85 and older | 20 | 48 | 2 | 2 | 4 | 0 |
| Under 18 | 458 | 378 | 18 | 6 | 5 | 45 |
| 65 and older | 145 | 471 | 8 | 9 | 16 | 11 |
| Median Age | 28.2 | 45.4 | 35.7 | 43.6 | 48.6 | 30.4 |