

The Estates

Carmel Del Mar

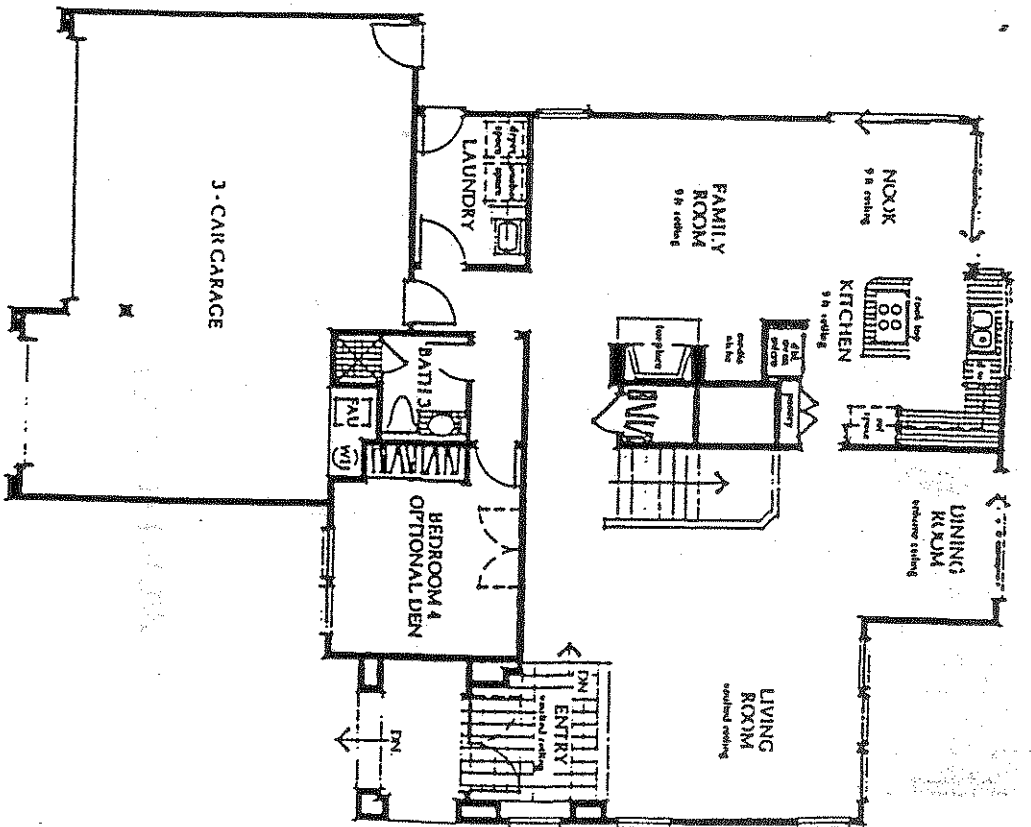
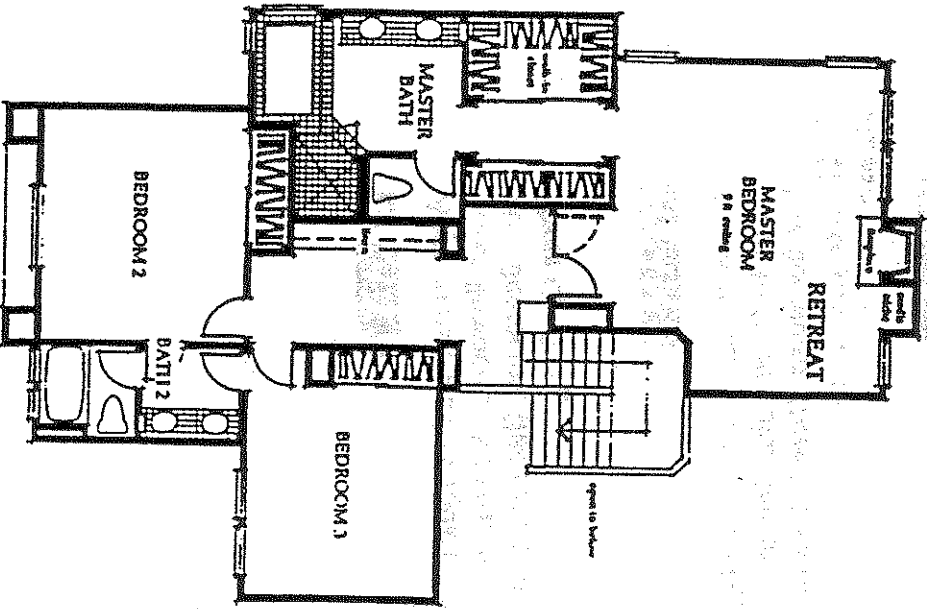
PLAN 1

Approximately 2,848 square feet

Three Bedrooms plus Den or

Four Bedrooms, Three Full Baths

Three Car Garage



THE BRYANES
Customized Homes

All rooming, floor plans, and maps are artist's conception and are not intended to be a contract. The Department of the Building, Planning and Zoning, and the Department of Public Works and Engineering are responsible for the accuracy of all information. Window locations may vary from plan. All elevations, finishes and materials are subject to change without notice. All square footages are approximate.

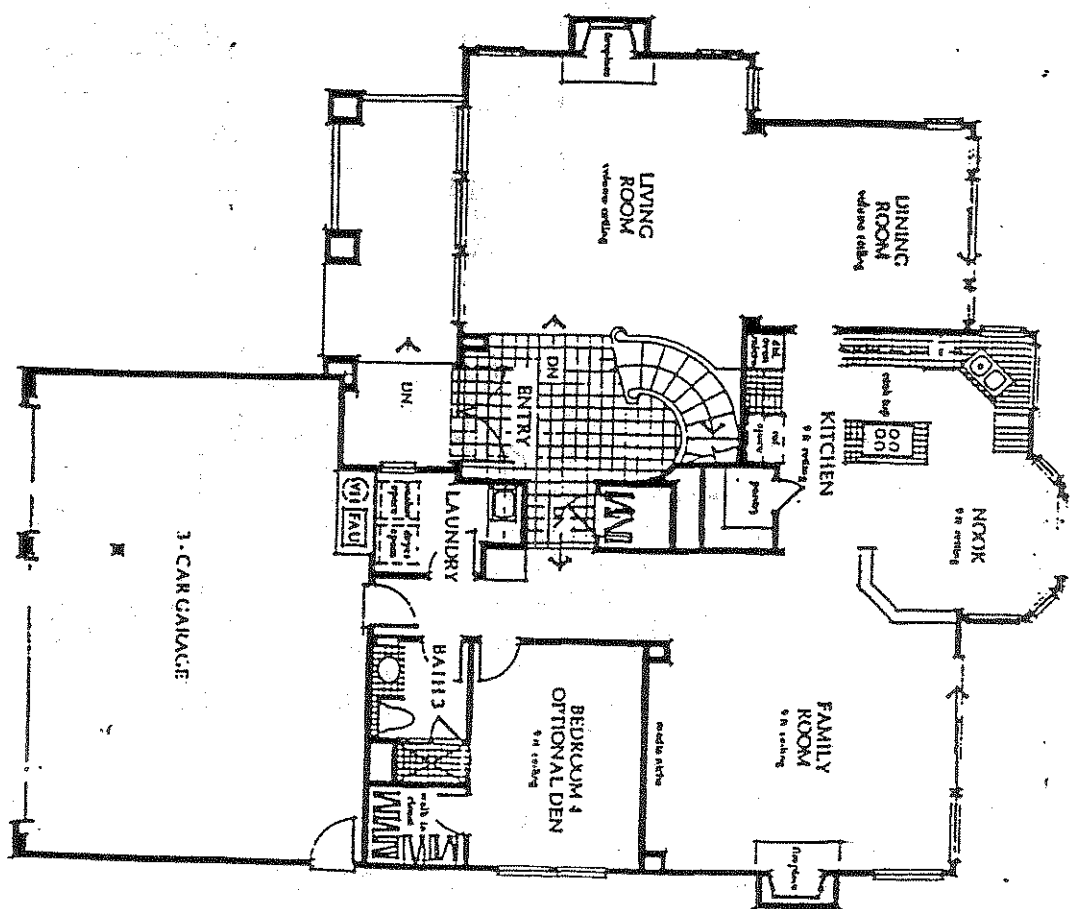
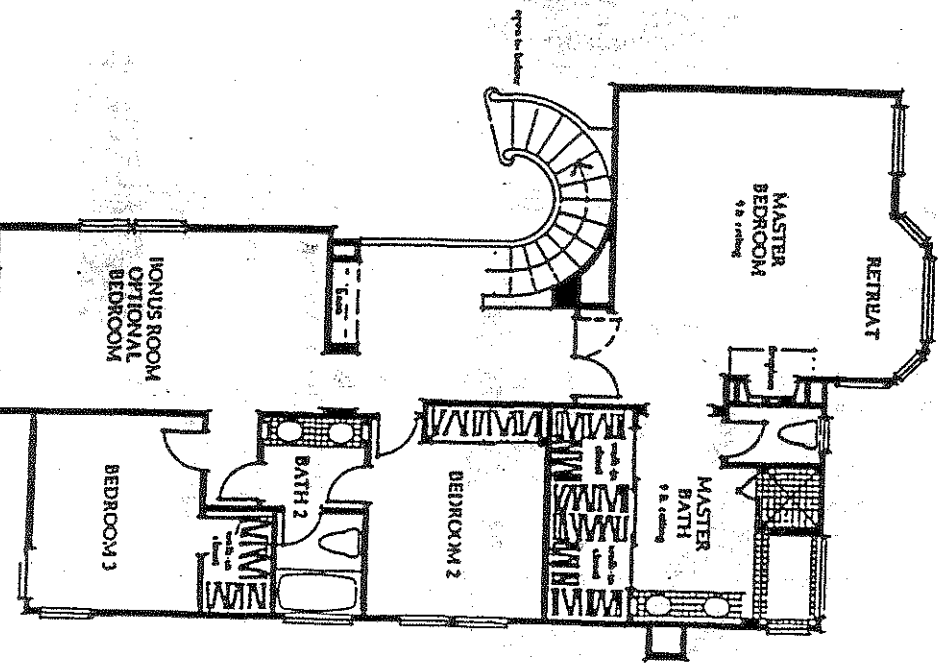
PLAN 2

Approximately 3,090 square feet

Three Bedrooms plus Den and Bonus Room or

Five Bedrooms, Three Full Baths

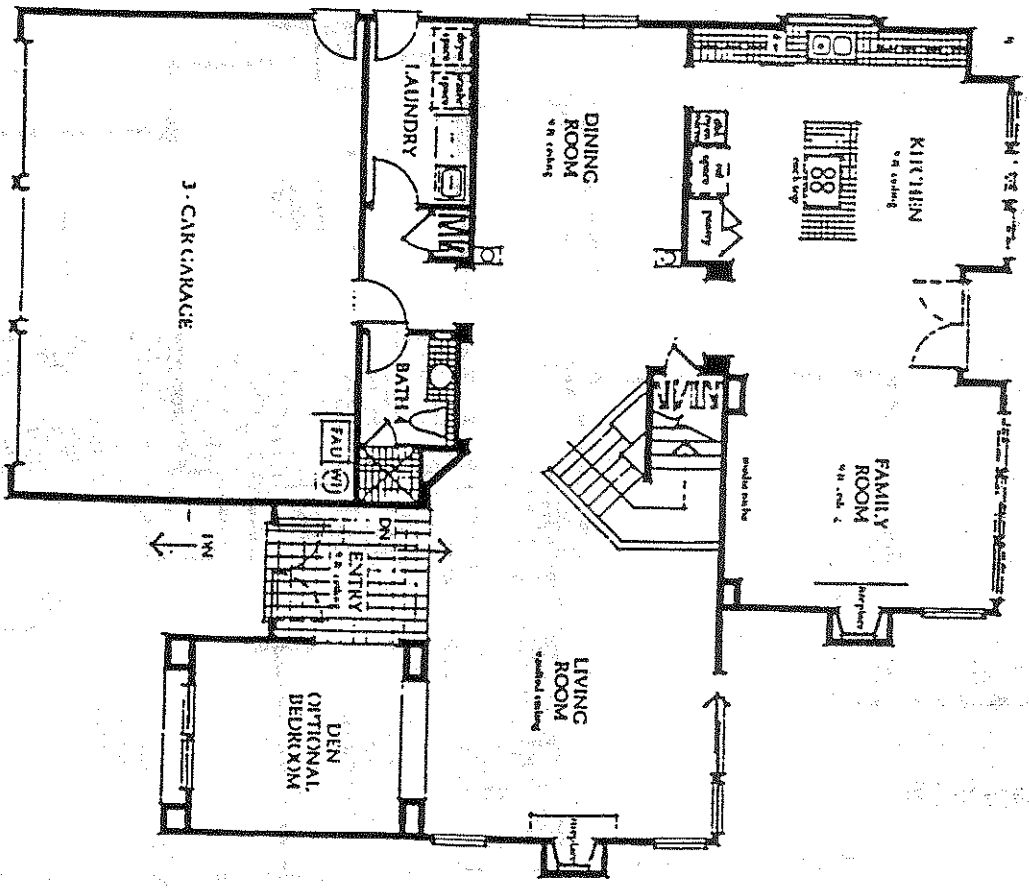
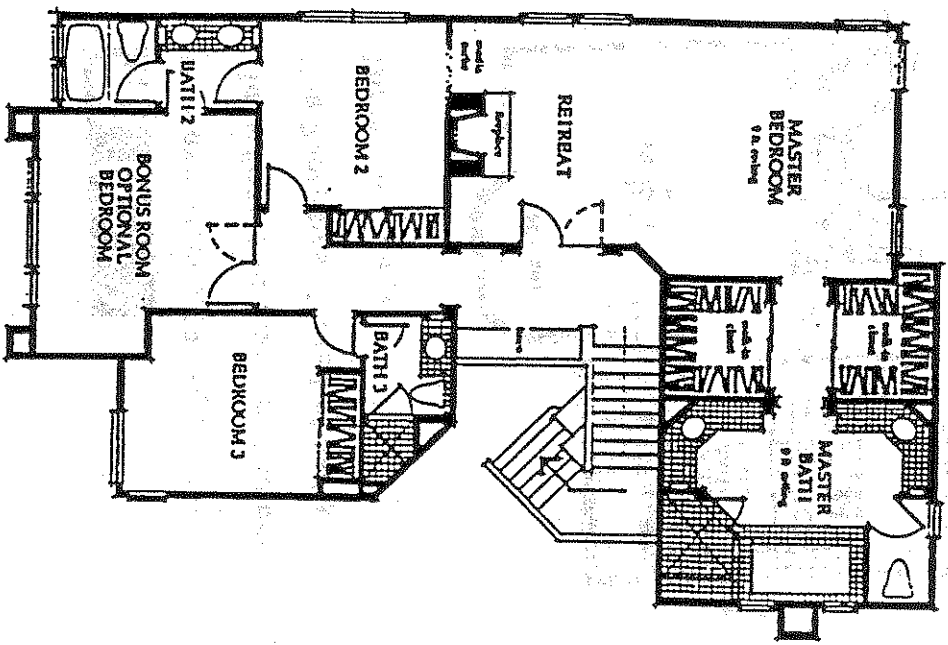
Three Car Garage



WILD BSTATBS

PLAN 3

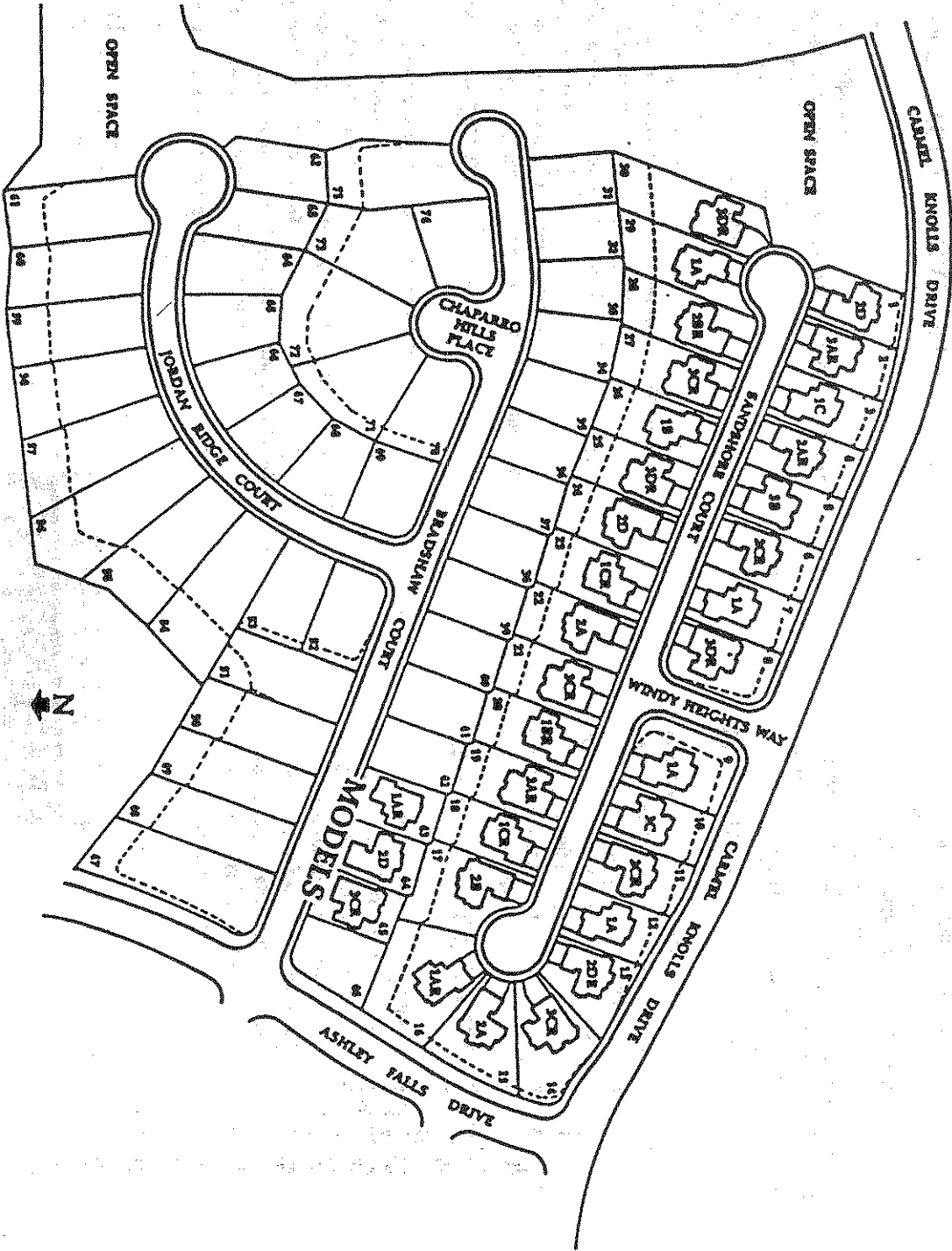
Approximately 3,360 square feet
 Three Bedrooms plus Den and Bonus Room or
 Five Bedrooms, Four Full Baths
 Three Car Garage



THE BEST VALUES
Carroll Dale Homes

All renderings, floor plans, and maps are artist's conceptions and are not intended to be an actual depiction of the building's location, walls, doorways or landscaping and are not necessarily to scale. All square footages are approximate. Window locations may vary per plan and elevation. Fixing and walls, if included, will vary according to size and location of lots.

THE ISLANDS
(Jarmel Del Mar)



This site plan is not intended as a legal description of the property. The depiction of boundaries and building footprints is meant to serve only as a general guide. The actual boundaries and building footprints will differ to some extent from the above depiction. Legal descriptions are available for your information. Ask your Sales Representative for details.

