

# The Gables

# Avalon

Approximately 3,099 Square Feet

## • RESIDENCE ONE

*Two-Story*  
with Covered Entry Porch

*Three-Four Bedrooms*

*Den*

*Retreat*  
at Master Bedroom Suite

*Three-and-One-Half Baths*

*Formal Living Room*  
with Fireplace and French Doors to Courtyard

*Exterior Courtyard*  
for Outdoor Living and Entertaining

*Formal Dining Room*  
Adjacent Butler's Pantry and French Doors  
to Rear Yard

*Gourmet Kitchen*  
with Granite Countertop, 6-Burner Cooktop,  
Refrigerator, Convenient Center Island with  
Breakfast Bar, Plus Pantry Storage

*Breakfast Nook*

*Spacious Family Room*  
with Raised Hearth Wood-Burning Fireplace and  
Entertainment Niche

*Tech Center*  
on Upper Level

*Library Shelving*  
at Upper Landing

*Interior Laundry Room*  
with Sink and Cabinet Storage

*Three-Car Tandem Garage*

In an effort to continuously improve our homes, Greystone Homes reserves the right to change floorplans, elevations, materials and prices without prior notice. All plans, landscaping, floorplans, renderings and maps are artist's conception and are not intended to be an exact duplication of either building or landscaping. Variations in floorplans and elevations do exist and square footages are approximate and will vary.



Elevation 1A

Artist's Conception



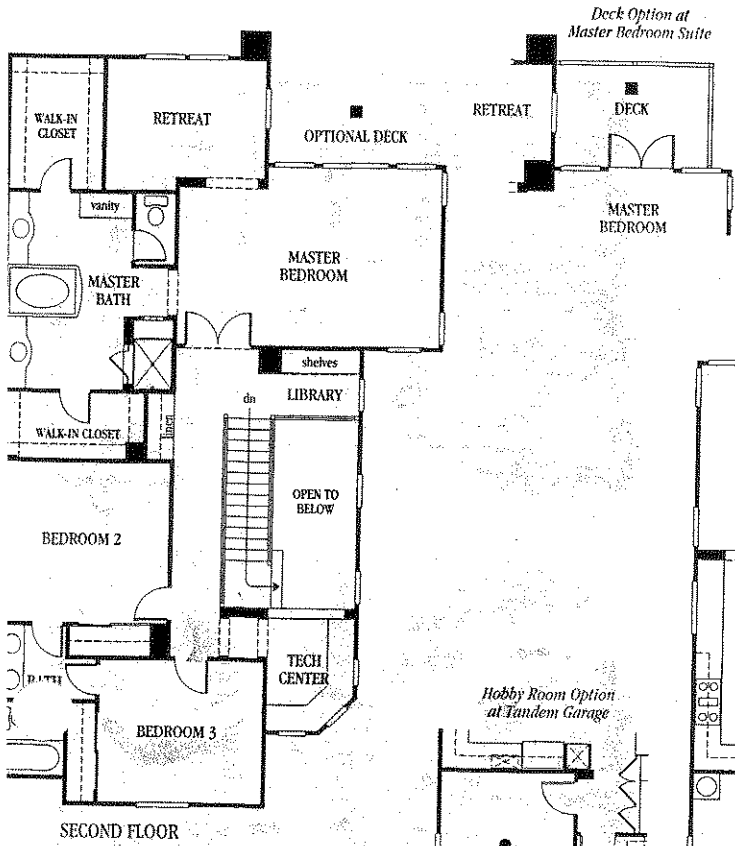
Elevation 1B

Artist's Conception

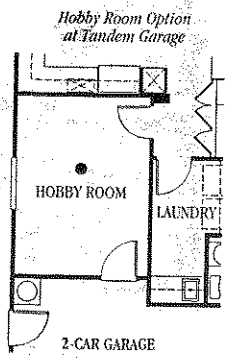
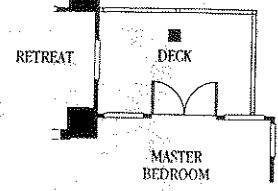


Elevation 1C

Artist's Conception

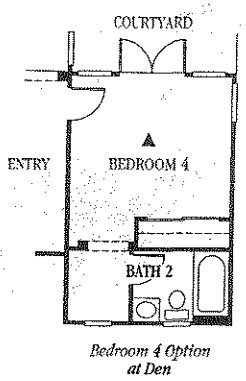
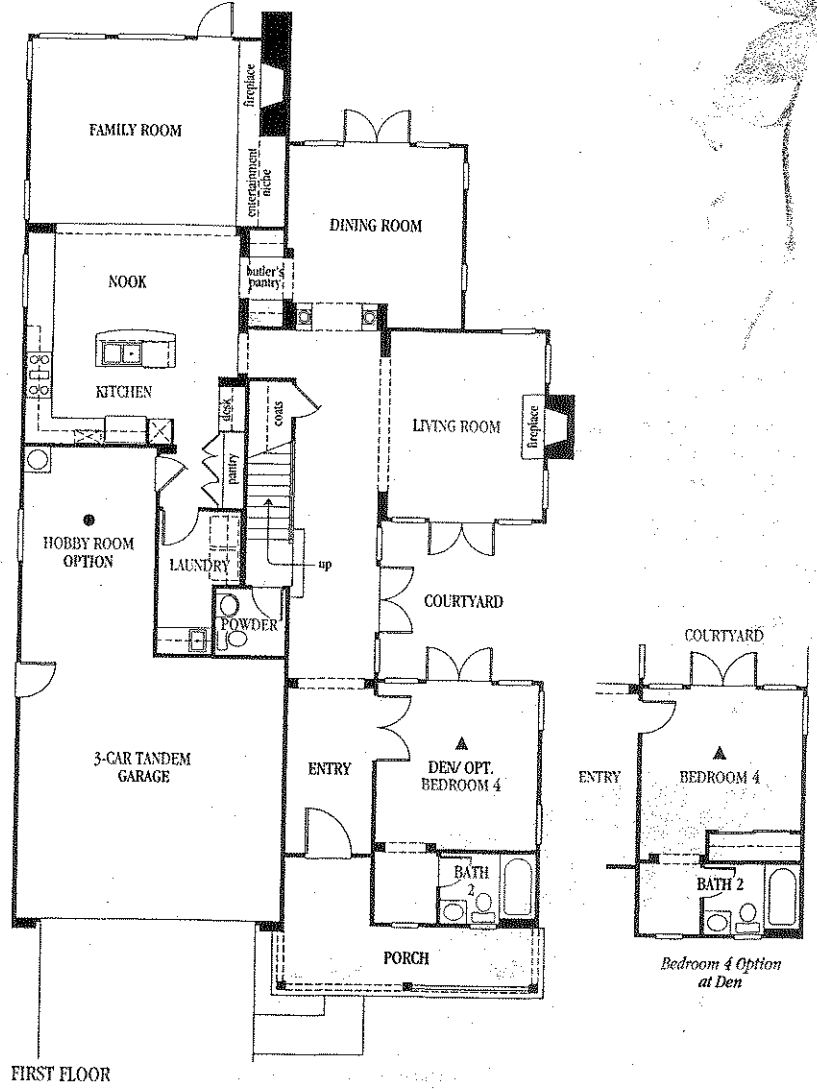


*Deck Option at Master Bedroom Suite*



*Options — 1st Floor*  
*Hobby Room at Tandem Garage*  
 (approximately 146 sq. ft.)  
*Bedroom 4 at Den*

*Options — 2nd Floor*  
*Deck at Master Bedroom Suite*



# Hanover

Approximately 3,325 Square Feet

## • RESIDENCE TWO

*Two-Story*  
with Covered Entry

*Four-Five Bedrooms*

*Den*

*Retreat*  
of Master Bedroom Suite

*Four to Four-and-One-Half Baths*

*Formal Living Room*  
with Fireplace

*Formal Dining Room*

*Generous Family Room*  
with Raised Hearth Wood-Burning Fireplace  
and Entertainment Niche

*Epicurean-Style Kitchen*  
with Granite Countertop, 6-Burner Cooktop  
and Refrigerator

*Morning Room*  
with Built-In Cabinetry and French Doors

*Tech Desk*  
on Upper Level

*Interior Laundry Room*  
with Sink and Cabinet Storage

*Three-Car Split Garage*



Elevation 2A

Artist's Conception



Elevation 2B

Artist's Conception

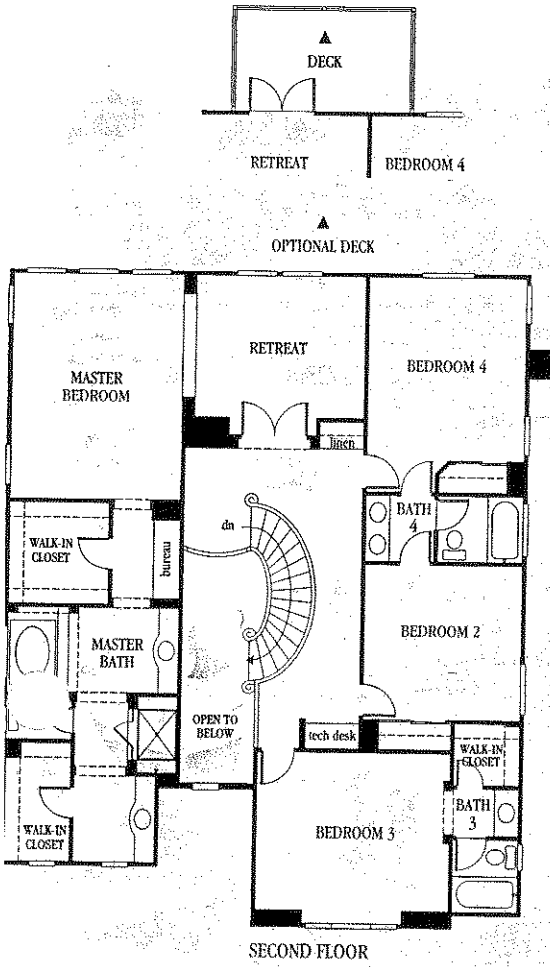


Elevation 2C

Artist's Conception

In an effort to continuously improve our homes, Greystone Homes reserves the right to change floorplans, elevations, materials and prices without prior notice. All plans, landscaping, floorplans, renderings and maps are artist's conception and are not intended to be an exact duplication of either building or landscaping. Variations in floorplans and elevations do exist and square footages are approximate and will vary.

*Deck Option  
at Master Bedroom Suite*



*Options — 1st Floor*

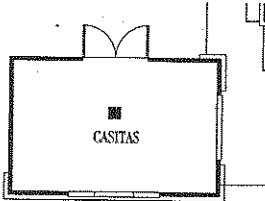
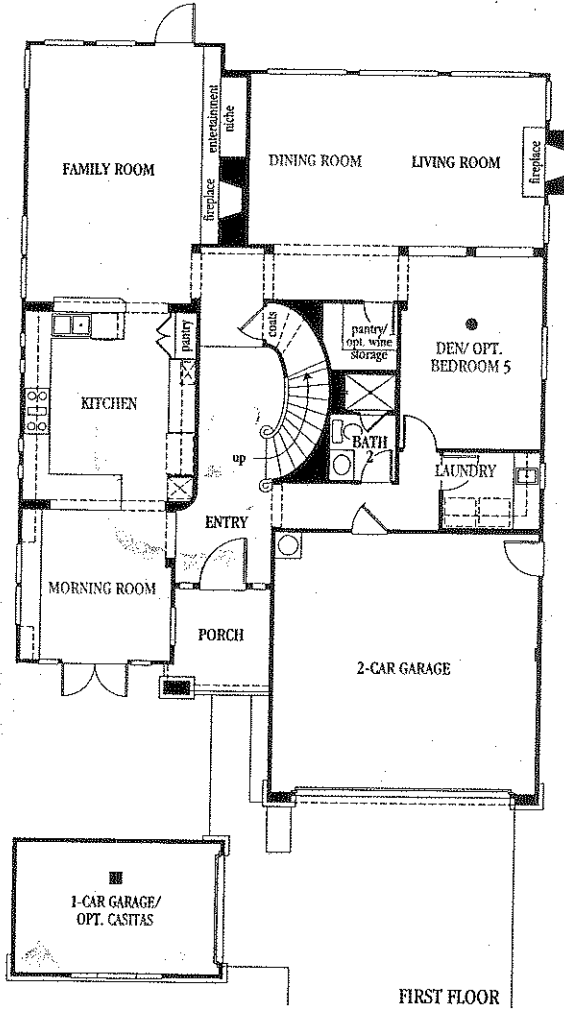
*Bedroom 5 at Den*

*Casitas at 1-Car Garage  
(approximately 172 sq. ft.)*

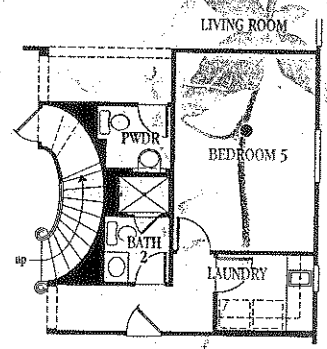
*Wine Storage at Pantry*

*Options — 2nd Floor*

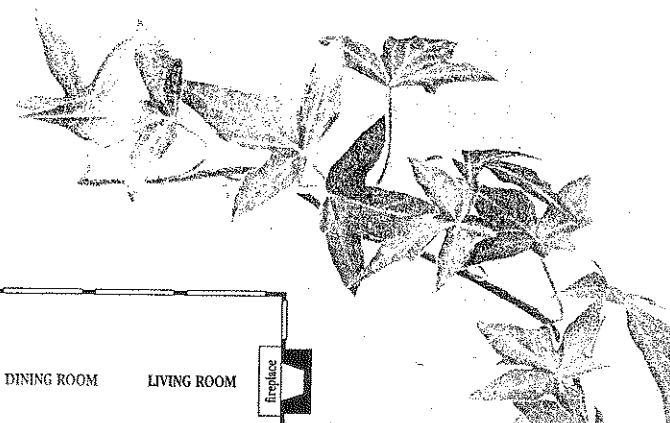
*Deck at Master Bedroom Suite*



*Casitas Option  
at 1-Car Garage*



*Bedroom 5 Option  
at Den*



# Nantucket

Approximately 3,575 Square Feet

## • RESIDENCE THREE

*Two-Story*  
with Covered Entry

*Four-Five Bedrooms*

*Bonus Room*

*Master Bedroom Suite*  
with Fireplace and Retreat

*Four-and-One-Half Baths*

*Formal Living Room*  
with Fireplace and French Doors to Courtyard

*Exterior Courtyard*  
for Outdoor Living and Entertaining

*Formal Dining Room*

*Spacious Family Room*  
with Raised Hearth Wood-Burning Fireplace,  
Entertainment Niche and Bookcase

*Convenient Kitchen*  
with Granite Countertop, 6-Burner Cooktop at  
Center Island, Refrigerator and Breakfast Bar

*Morning Room*  
with Pantry Storage, Built-In Desk and French  
Doors to Courtyard

*Tech Center*  
on Upper Level

*Interior Laundry Room*  
with Sink and Cabinet Storage

*Three-Car Tandem Garage*



Elevation 3A

Artist's Conception



Elevation 3B

Artist's Conception

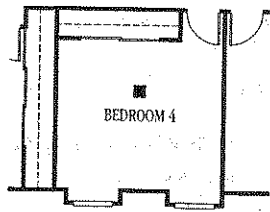
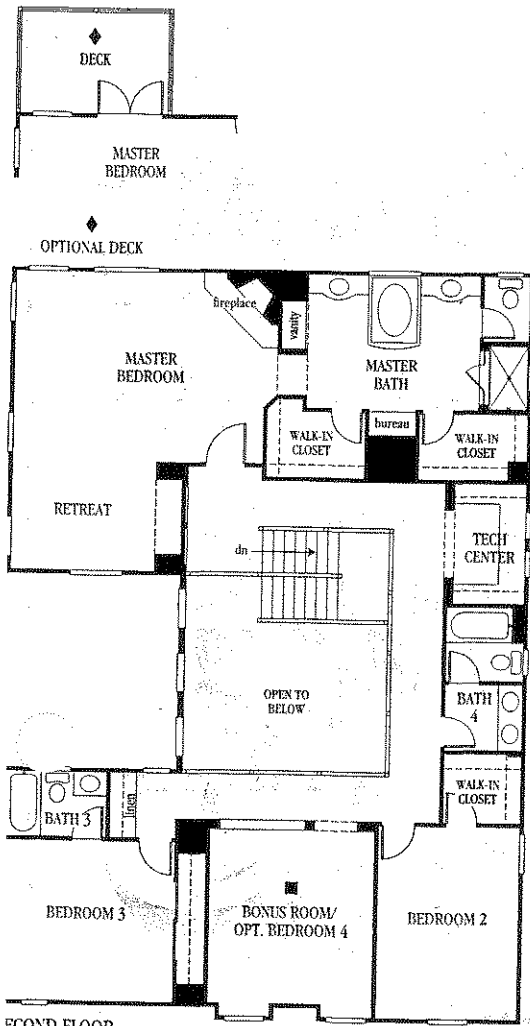


Elevation 3C

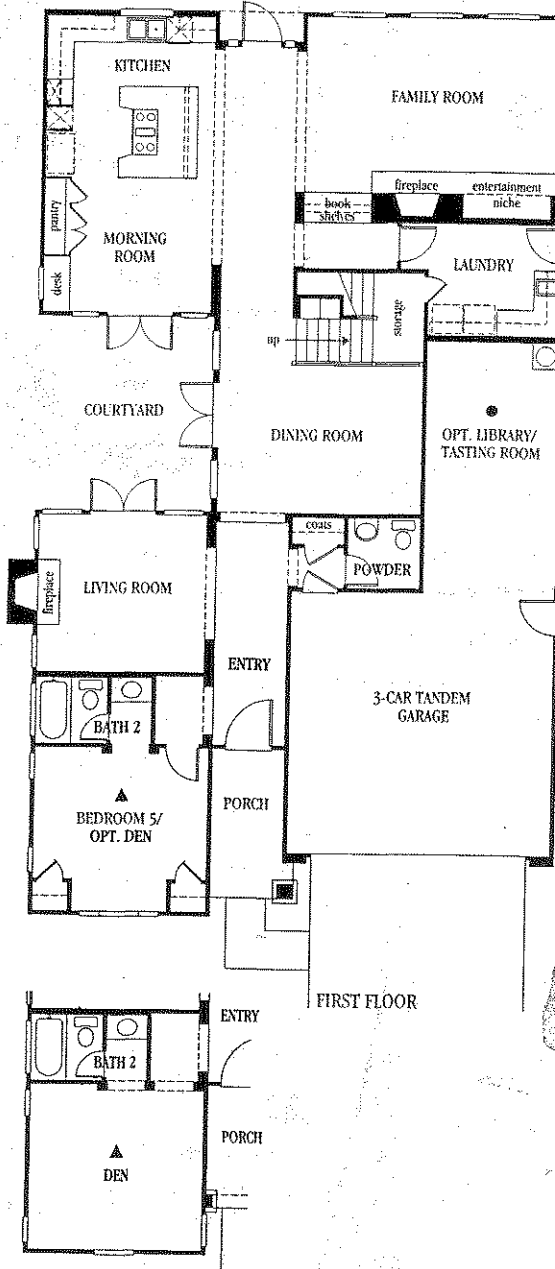
Artist's Conception

In an effort to continuously improve our homes, Greystone Homes reserves the right to change floorplans, elevations, materials and prices without prior notice. All plans, landscaping, floorplans, renderings and maps are artist's conception and are not intended to be an exact duplication of either building or landscaping. Variations in floorplans and elevations do exist and square footages are approximate and will vary.

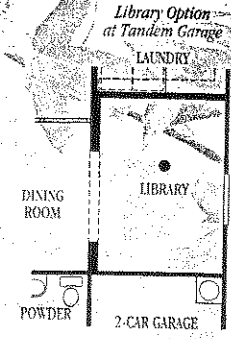
Deck Option at Master Bedroom Suite



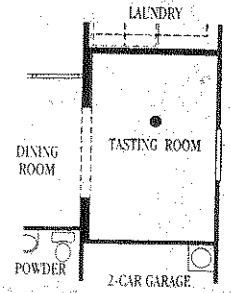
Bedroom 4 Option at Bonus Room



Den Option at Bedroom 5



Tasting Room Option at Tandem Garage



Options — 1st Floor  
Library/Tasting Room at Tandem Garage (approximately 153 sq. ft.)

Den at Bedroom 5

Options — 2nd Floor  
Bedroom 4 at Bonus Room  
Deck at Master Bedroom Suite