

# Community Information

---

## Perris





## PERRIS

The City of Perris is located in southwest Riverside County. Perris is approximately 80 miles South East of Los Angeles and approximately 80 miles North East of San Diego, on the Inland Route of the 215 Freeway.

Perris became a city in 1911, and is at the heart of a dynamic and diverse economy. Perris is the county's 11th largest marketplace and is positioned to maintain stable growth in the twenty-first century.

In general, Perris has a sunny, mild Mediterranean climate. On average, Perris gets only 10 inches of rain per year. The humidity is quite low all year. The July high temperatures average 97 degrees, while January low temperatures average 35 degrees. There are 275 sunny days per year.

### History

Before the 1880's, the Perris Valley was known as the San Jacinto Plains after the river that crosses it. From pre-historic times, Indians inhabited the hills, their trails crisscrossed the valley. When Spanish and Mexican miners found gold deposits in the surrounding hills, things changed. Sheep roamed the valley, but, as the mines expanded to include tin, coal and even clay, more people discovered what Perris Valley had to offer: moderate climate, rich soil and plenty of flat land.

**Before and After the Railroad:** In 1881, the California Southern Railroad (CSRR) decided to lay their tracks through the valley thereby terminating the transcontinental route of the Santa Fe Railway at San Diego. Mr. Fredrick Thomas Perris was put in personal charge of all surveying and construction of the route.

With the completion of the railroad in 1882, settlers began flocking to the valley staking out homesteads and buying railroad land at Pinacate. At one point, Pinacate was reported to have a population of 400 people.

In 1885, people in the central and northern parts of the valley discussed the desirability of a town more conveniently located. Land for the project was purchased from the Southern Pacific Railroad and Fred T. Perris, CSRR's new Chief Engineer, returned to the valley to study the citizens proposal. The citizens offered to erect a depot, dig a well, and donate a number of lots to the railroad in exchange for establishing a station at the new town.

**1880's - 1911: Perris Becomes a Town:** The town site of Perris was officially named a station on the Transcontinental Route of the Santa Fe on April 1, 1886 and by 1887, six passenger trains and two freight trains stopped at Perris daily. This rapid growth proved short-lived when heavy storms repeatedly washed out the tracks in the Temecula Gorge in the early 1890's, causing the railroad to abandon service to San Diego by way of Perris. In 1911 Perris became an incorporated city.

**1911 to the Present:** While the railroad had played an important part in establishing the new town, the people now turned to agriculture for their future development. Because of limited groundwater, dry grain farming was the main crop before water was brought to the valley by the Eastern Municipal Water





district in the early 1950's. Alfalfa, the King potato (which would produce two crops a year), and still later, sugar beets became the mainstay of farming the Perris Valley.

With the construction of Lake Perris in the late 60's and early 70's - Perris once again became attractive - this time as a recreational area. In addition to the lake's activities Perris' hot air ballooning. Orange Empire Railway Museum and skydiving activities attract international recognition.

## Housing

Housing prices in Perris are still affordable compared with other cities in the region. The Perris and Sun City area will provide the most future housing inventory in Western Riverside County in the near future.

The median home value in Perris, CA, is \$403,800. Home appreciation is 1.06% over the last year. The median age of Perris, CA, real estate is 15 years.

## Orange Empire Railway Museum

2201 S. "A" St. / Perris CA 92570

[www.oerm.org](http://www.oerm.org) / (951) 657-2605



Orange Empire Railway Museum operates a working railway where visitors can ride on the classic trolleys, passenger trains and other equipment of Southern California's railroad past. The museum railway operates every weekend and on most major holidays from 11 a.m. to 5 p.m., and also on weekdays for charters and other special events. The Museum grounds are open every day from 9 a.m. to 5 p.m. with the exception of Thanksgiving and Christmas.

On a typical weekend (other than during special events), two trolleys are running on the half-mile dual-gauge Loop Line, and another train is operating on the 1.5 mile standard gauge Mainline. A Pacific Electric interurban or city streetcar also operates on the Mainline on selected weekends. The train is usually an electrically or diesel powered freight train (with a caboose to ride in if you wish), or a consist of passenger train cars. Typically, you can experience riding in one of the early Los Angeles streetcars and a more modern PCC on the Loop Line, and ride in either a caboose (the cupola is very popular with the kids) or open gondola on the freight train. The cars and locomotives are selected on a rotating basis from our historic collection.

Steam locomotive operation is scheduled for the third weekend of the month between September and May (no operations during the summer) and during certain special events and certain major holidays. Check the museum's calendar of events for further information. Unfortunately, we can not guarantee the availability of any particular piece of equipment on any given day. Some equipment does not operate during rain.





## Utilities

### Cable, Satellite TV, and Telephone

AT&T: (800) 310.2355 (residential) / [www.att.com](http://www.att.com)

Time Warner Cable: (887) 475-3127 / [www.timewarnercable.com/SoCal](http://www.timewarnercable.com/SoCal)

Verizon: (800) 483-4000 / [www22.verizon.com](http://www22.verizon.com)

### Electricity

Southern California Edison: (800) 684-8123 (turn on/off) / [www.sce.com](http://www.sce.com)

### Natural Gas

The Gas Company: (800) 427-2200 / [www.socalgas.com](http://www.socalgas.com)

### Trash Service

CR&R Waste Services - Perris: (951) 943-1991 / [www.CR&R.com](http://www.CR&R.com)

### Water & Sewer

City of Perris Finance & Water: (951) 943-4610 Opening, closing or inquiring about an account. After Hours Emergency: 888-298-5592

Eastern Municipal Water District: (800) 426-3693 Opening, closing or inquiring about an account. All other calls: (951) 928-3777 / [www.emwd.org](http://www.emwd.org)

## Facilities

### City of Perris Senior Center

100 N. "D" St. / Perris, CA 92570 / (951) 657-7334

Hours: Monday -Friday 8 am - 5 pm

Senior Meal Reservation: (951) 247-1667

Call 24 hours in advance

### Cesar E. Chavez Library

163 E. San Jacinto / Perris, CA 92570 / (951) 657-2358

Hours: Monday, Thursday, Friday, Saturday: 10 am – 6 pm

Tuesday, Wednesday: 12 pm - 8 pm

Sunday: 1 pm - 5 pm

### City of Perris Animal Control

(951) 657-4134

Regular Office Hours: Mon - Thu 6:30 am – 4 pm. Excludes Legal Holidays

After Hours Emergency: (951) 359-2983

### Lake Perris State Recreation Area

17801 Lake Perris Drive / Perris, California

[http://www.parks.ca.gov/?page\\_id=651](http://www.parks.ca.gov/?page_id=651)

Open 7 days a week, year round.

Summer Hours: 04-10 through 10-31, 6:00 am - 10:00 pm

Watercraft off of the water by sunset.

Winter Hours: 6:00 am - 8:00 pm

Lake Perris State Recreation Area is a reservoir that was completed in 1973. Situated in a mountain-rimmed valley between Moreno Valley, and Perris, it is



the southern terminus of the California State Water Project.

The park offers a wide variety of activities including boating, swimming, camping, horseback riding, fishing, picnicking, hiking, rock climbing and sailing. Because of this and the lake's proximity to major population centers, it is a very popular recreation destination during the summer months.

**Weather:** Lake Perris has hot, dry summers and cool, moist winters. Rainy weather is limited almost completely to the months between November and April.

The area lies at a crossroads of weather influences. Coastal fog (and smog) comes from the west, while "Santa Anas"—strong, hot dry winds—come from the deserts to the east and northeast.

**Things You May See:** More than a hundred species of birds have been spotted at Lake Perris. Many are migratory, and stop at the park briefly during their travels, while others make their permanent residence here. Larks, loggerhead shrikes, roadrunners, California thrashers, quail, wrens, sparrows, hummingbirds, golden eagles, several varieties of hawks, ospreys, and even bald eagles may be seen. Many varieties of waterfowl use the lake including pintails, widgeons, teals, mallards, shovelers, various geese, and sometimes whistling swans and pelicans. Blacknecked stilts, avocets, killdeer, willets, kingfishers, egrets, and herons are attracted to the water's edge.

Day and night, hawks and owls are frequently seen hunting for prey. The bike trail offers an easy and convenient way to see some of the birds and other wildlife of Lake Perris. Early morning or dusk are the best times. Ranger-led hikes are conducted during the spring and early summer months.



## Education

### Perris Elementary School District

143 East 1st Street / Perris, CA 92570

(951) 657-3118 Phone / (951) 940-5115 Fax / [perris-ca.schoolloop.com](http://perris-ca.schoolloop.com)

### Elementary Schools

Enchanted Hills

1357 Mt. Baldy St. / Perris, CA 92570 / (951) 443-4790

Good Hope

24050 Theda St. / Perris, CA 92570 / (951) 657-5181

Nan Sanders

1461 North A St. / Perris, CA 92570 / (951) 657-0728

Perris

500 A St. / Perris, CA 92571 / (951) 657-2124

Palms

255 East Jarvis / Perris, CA 92571 / (951) 940-5112

Park Avenue

445 South Park Ave. / Perris, CA 92570-2046 / (951) 940-5140





#### Railway

555 Alpine Dr. / Perris, CA 92570 / (951) 943-3259

#### Sky View

625 Mildred Street / Perris, CA 92570 / (951) 657-4214

### **Val Verde Unified School District**

975 W. Morgan Street / Perris, CA 92571

Phone: (951) 940-6100 / Fax: (951) 940-6121 / [www.valverde.edu](http://www.valverde.edu)

#### **Elementary Schools**

##### Avalon

1815 East Rider St / Perris, CA 92571 Phone: (951) 490-0360

##### Columbia

21350 Rider St. / Perris, CA 92570 / (909) 443-2460

##### Mead Valley

21-100 Oleander Ave. / Perris, CA 92570 / (951) 940-8540

##### Sierra Vista

20300 Sherman Rd / Perris, CA 92571-3157 / (951) 443-2430

##### Triple Crown

530 Orange Ave. / Perris, CA 92571 / (951) 490-0440

##### Val Verde

2656 Indian Ave. / Perris, CA 92571 / (951) 940-8550

#### **Middle Schools**

##### Lakeside

27720 Walnut St. / Perris, CA 92571 / (951) 443-2440

##### Tomas Rivera

21675 Martin St. / Perris, CA 92570 / (951) 940-8570

#### **High Schools**

##### Citrus Hill

18150 Wood Rd. / Perris, CA 92570 / (951) 490-0400

##### Val Verde

972 West Morgan St. / Perris, CA 92571 / (951) 940-6155

##### Val Verde Student Success Academy

972 West Morgan St. / Perris, CA 92571 / (951) 490-0370





### **Perris Union High School District**

155 East 4th Street / Perris CA, 92570

(951) 943.6369 / [www.puhsd.org](http://www.puhsd.org)

### **Middle Schools**

Pinacate

1990 South A St / Perris, CA 92570 / (951) 943-6441

### **High Schools**

Perris

175 East Nuevo Rd. / Perris, CA 92571 / (951) 943-6369

Perris Lake

418 West Ellis / Perris, CA 92570 / (951) 657-7357

The Academy

515 East Seventh St / Perris, CA 92570 / (951) 657-2174

California Military Institute

227-C North D St. / Perris, CA 92570 / (951) 443-2774

Choice 2000 On-Line

11 South D St / Perris, CA 92570 / (951) 940-5700

### **Private Schools**

Bright Beginnings

610 Nuevo / Grades: PK - KG

Cornerstone Christian School

PO Box 67 / Perris, CA 92572 / (909) 928-1107 / Grades: 1-12

First Bethel B.O.C.

145 Romona Expressway, No. B / Perris, CA 92570

(909) 657-7207 / Grades 1-6

Lighthouse Christian Academy

23100 Betty Rd / Perris, CA 92570 / (909) 657-1025 / Grades: PK - 11

Praise Fellowship Christian Academy

1251 North A St / Perris, CA 92570 / (909) 943-2110 / Grades: K-11

Redeemer Lutheran School

555 N. Perris Blvd. / Perris, CA 92570 / (951) 943-4928 / Grades: PK - KG

St James Catholic School

250 West 3rd Street / Perris, CA 92570 / (909) 657-5226 / Grades: K-8

Temple Christian School

745 N. Perris Blvd. / Perris, CA 92571 / (909) 657-7326 / Grades: PK - 8

21135 Olympia Ave. / Perris, CA 92570

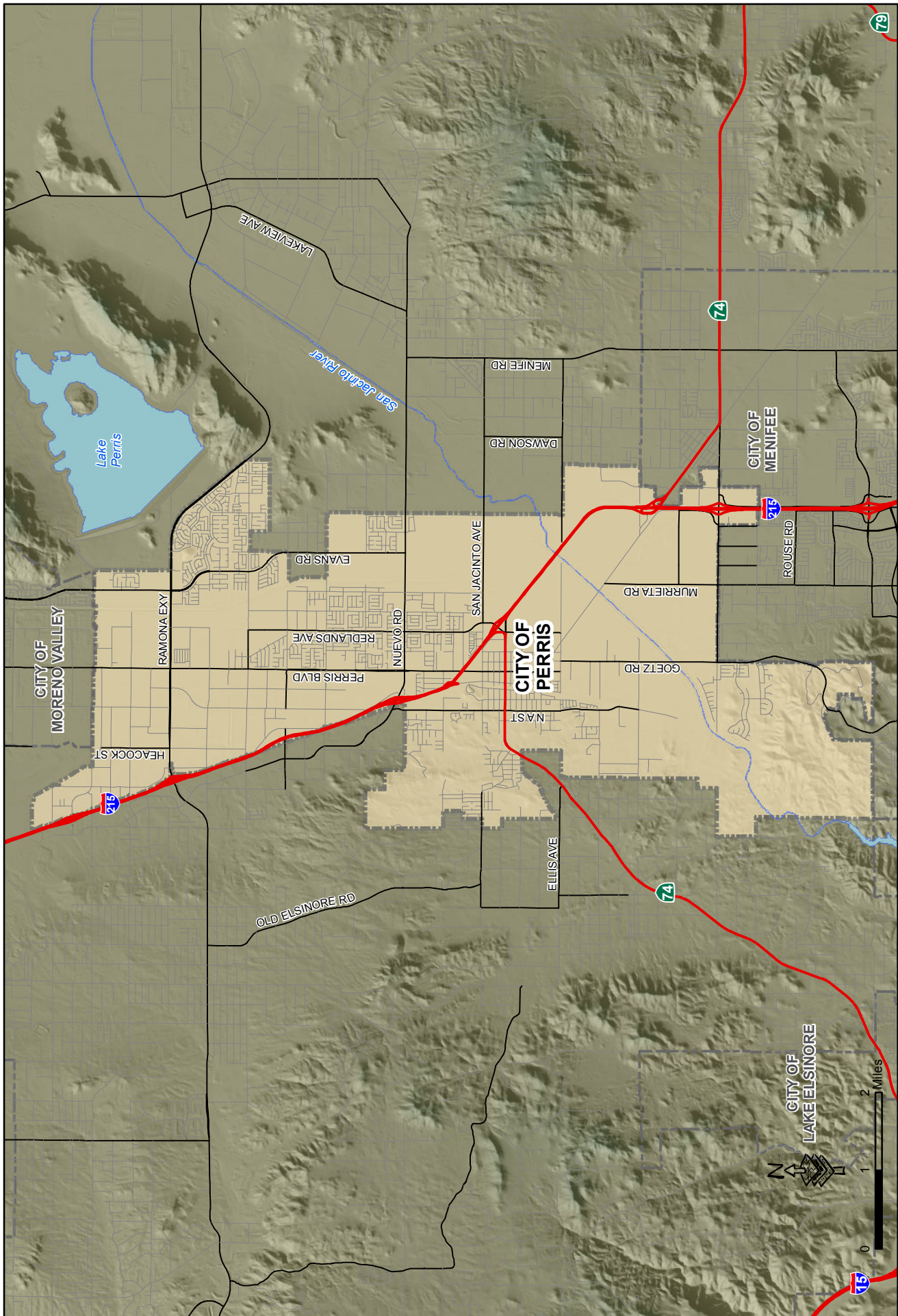
Phone (951) 943-6644 / Fax (951) 943-2470

Grades: KG - 12 / [californiaranchschool.org](http://californiaranchschool.org)

Tec-The Ranch

23115 Rider St / Perris, CA 92570 / (909) 657-7326 / Grades: 7-12







# Census 2020 California Hard-to-Count Fact Sheet

## Perris City in Riverside County

(CA Census 2020 Region 7)

Race and Hispanic Origin	
Total population	75,011
Hispanic or Latino of any race	75.1%
Hispanic Exclusive Race:	
White alone	10.3%
Black or African-American alone	9.6%
American Indian and Alaska Native alone	0.1%
Asian alone	3.5%
Native Hawaiian and Other Pacific Islander alone	0.0%
Some other race alone	0.2%

Top 3 Languages Spoken at Home	
Total Limited-English Population (Persons 5 years and older who do not speak English "very well")	15,841
Spanish	96.2%
Other Indo-European languages	1.0%
Tagalog (incl. Filipino)	0.7%

Hard-to-Count Characteristics	
The California Hard-to-Count (CA-HTC) Index is based on multiple demographic, housing and socioeconomic variables correlated with an area being difficult to enumerate. Census tracts with higher indexes are likely to be places that will pose significant challenges to enumerate in 2020.	
Percent of Total Housing Units:	
That are vacant (includes seasonal)	5.5%
With 3 or more units in a multi-unit structure	9.5%
Percent of Occupied Housing Units (or Households):	
That are renter-occupied	37.4%
That are overcrowded	3.2%
Without broadband Internet	15.7%
With limited-English speaking ability	9.6%
That are non-family	13.1%
Receiving public assistance income	4.7%
Percent of population:	
Under 5 years old	8.0%
That is foreign-born	30.5%
Who moved from outside county in past year	4.2%
With income below 150 percent of poverty level	34.1%
Age 16 or older that are unemployed	13.0%
Age 25 or older who are not high school graduates	34.1%

California Hard-to-Count Characteristics	
Median CA-HTC index all census tracts	40.0
Estimated Total Population in Census Tracts with above median CA-HTC	48,762
Leading HTC characteristics in those areas: Non-high school graduates; Below 150 percent of poverty level; Unemployed	

Top 5 CA-HTC Census Tracts in Place	
Census Tract 467:	
Total Population	4,392
CA-HTC Index	92.0
Leading Hard-to-Count Reasons: Vacant housing units Renter-occupied units Below 150 percent of poverty level	
Census Tract 428:	
Total Population	8,294
CA-HTC Index	77.0
Leading Hard-to-Count Reasons: Unemployed Non-high school graduates Below 150 percent of poverty level	
Census Tract 429.04:	
Total Population	10,642
CA-HTC Index	71.0
Leading Hard-to-Count Reasons: Unemployed Non-high school graduates Below 150 percent of poverty level	
Census Tract 427.06:	
Total Population	8,970
CA-HTC Index	57.0
Leading Hard-to-Count Reasons: Unemployed Non-high school graduates Below 150 percent of poverty level	
Census Tract 429.01:	
Total Population	8,183
CA-HTC Index	57.0
Leading Hard-to-Count Reasons: Unemployed Below 150 percent of poverty level Crowded units	



For a detailed map of all census tracts, go to [census.ca.gov/HTC-map](https://census.ca.gov/HTC-map)

Data Source: U.S. Census Bureau, American Community Survey, 2013-2017 (5-year).

Geography Note: Census tracts do not cross county boundaries but a tract may be divided by city, district, and other boundaries. Also, the same tract number may be used in more than one county. "CDP" – A Census Designated Place is a unincorporated community.

To learn more about California's Census 2020 efforts, please visit [census.ca.gov](https://census.ca.gov)

# Perris City

## California Hard-to-Count Index by Census Tract

- 1 - 16
- 16 - 30
- 30 - 47
- 47 - 70
- 70 - 136

Tracts with highest indexes

CA-HTC Index is 0



0 0.5 1 2 Miles

