

Community Information

San Carlos





SAN CARLOS

San Carlos is located at the eastern edge of the City of San Diego. Named for one of the ships sent by the Spaniards to explore California, the area is mostly residential and many of the ranch-style single family homes were built in the 1960s and 70s. Originally a rural area, San Carlos retains its small town rural feel even though it is within the boundaries of the City of San Diego.

Lake Murray, part of Mission Trails Regional Park, is a major attraction for residents providing picnicking spots, baseball fields, tennis courts and other facilities. A paved path follows the contours of the lake and offers perfect conditions for walking, bicycling and rollerblading. Fishing is allowed on certain days, and the lake yields bluegill, catfish, bass and trout. The area is blessed with many birds and attracts bird watchers from all over the world. There is also a well-established golf course that borders the lake with views of Cowles Mountain from each fairway.

Cowles Mountain, also part of the Mission Trails park, offers visitors the ability to enjoy a desert-like climate without actually leaving the city. The mile and a half hike to the top yields an excellent view of San Diego, Mexico and the Pacific Ocean. There are hiking, mountain biking and equestrian trails on the mountain--the highest point within the city limits of San Diego. Mission Trails park is the largest urban park in the U.S. at over 6,000 acres.

Parkway Plaza and Grossmont Center provide mall shopping and there are numerous small shopping areas that serve the area.



Mission Trails Regional Park

Home to a state-of-the-art Visitor and Interpretive Center, Mission Trails Regional Park is operated and maintained by the City of San Diego in close partnership with the Mission Trails Regional Park Foundation. Park Rangers and volunteer docents provide a wide range of interpretive programming, including tours and hikes, as well as video and slide presentations. Over 60,000 school children have toured the park.

With over 5,900 acres, Mission Trails is one of the largest urban parks in the country. It is also home to the Kumeyaay Lake Campground and new Equestrian (Multi-use) Staging Area.

Lake Murray

The City of San Diego took over operation of the Murray Reservoir in 1950 from the Helix Irrigation District. The City purchased the reservoir from Helix 10 years later. Murray Reservoir is located within the boundary of the City's Mission Trails Regional Park. When full, the reservoir has 171.1 surface acres, a maximum water depth of 95 feet, and 3.2 shoreline miles. Murray Reservoir has a water storage capacity of 4,684.2 acre feet. Water levels are monitored weekly.

This lake is very popular for bicycling, jogging, walking, rollerblading, and picnicking. Patrons can walk on paved road only as far as the dam gate (approximately 3.2 miles) and then must return, making it a 6.4-mile round trip. There are 10 barbecues and 64 picnic tables located around the lake. Patrons





can bring their own barbecues for use in designated areas only. No ground fires or glass containers are allowed. Dogs must be kept on a leash at all times and at least 50 feet away from the water. Dogs are not allowed on any boats. Smoking and alcohol are prohibited at Murray. Overnight camping is not allowed at Murray Reservoir.

Concession: They rent boats on a first come basis only, no reservations. They do have California state fishing licenses for sale. There is bait available - shiners, crawdads, nightcrawlers, meal worms and wax worms. Patrons can use credit cards for boat rentals and other purchases, but permits are cash only.

Fishing: Murray is open for fishing, launching and general access seven days a week except for certain holidays (see What's New - Holidays for further information). On days or times that the concession is closed patrons can purchase permits from the iron ranger boxes (envelope system) at the lake. The reservoir is stocked with Florida-strain largemouth bass, bluegill, channel catfish, black crappie and trout. Minimum size limit for bass is 12 inches. Fish limits are five trout, five bass, five catfish and 25 crappie and bluegill in aggregate, with no limit on other species. Anglers 16 years of age or older must have a California state fishing license. Fish catch information is updated weekly.

Water Craft: In addition to fishing from boats, patrons can use float tubes, waders, or simply fish from shore. Use of float tubes is restricted to within 150 feet or less from shore. Float tubers must wear chest waders and have a Coast Guard approved personal flotation device readily available at all times, and have 144 square inches of international orange visible at least 12 inches above the water line. They must also possess a horn or whistle to warn approaching craft. Any float tube that uses oars or has a motor must purchase a private boat use permit.



San Carlos Recreation Center

San Carlos Recreation Center is a strong establishment in the beautiful community of San Carlos. We offer youth basketball, youth volleyball and youth flag football leagues as well as skills clinics. Ballet and gymnastics classes are also available on a monthly basis. Need a night out with your spouse or friends? Drop the kids off for Parent's Night out every second Friday of the month! We have day camps for all the school breaks offered by Combine5. The San Carlos / Lake Murray Recreation Council sponsors two annual special events - a Spring Egg Hunt and a Halloween Carnival. Please call the Recreation Center office for more information on all our programs, classes and special events!

Lake Murray Community Park is also managed by the San Carlos Recreation Center. There is a playground that opened in November 2012 due to the efforts of the Lake Murray Playground Project and the City of San Diego's Park & Recreation Department's park planners. It has been a wonderful addition to the community, and any requested events at this park needs to be approved by the City. Please call the Recreation Center office and ask for the Center Director for any all questions and concerns regarding the Lake Murray Community Park and San Carlos Recreation Center.





Education

San Diego Unified School District

4100 Normal Street / San Diego, CA 92103
(619) 725-8000 / www.sandi.net

Elementary Schools

Benchley/Weinberger (K-5): 6269 Twin Lake Dr. (92119)
(619) 463-9271 / www.sandi.net/bw

Dailard (K-5): 6425 Cibola Rd. (92120)
(619) 286-1550 / www.sandi.net/dailard

Gage (K-5): 6811 Bisby Lake (92119)
(619) 463-0202 / www.sandi.net/gage

Green (K-5): 7030 Wandermere Dr. (92119)
(619) 460-5755 / www.sandi.net/green

Marvin (K-5): 5720 Brunswick Ave. (92120)
(619) 583-1355 / www.sandi.net/marvin

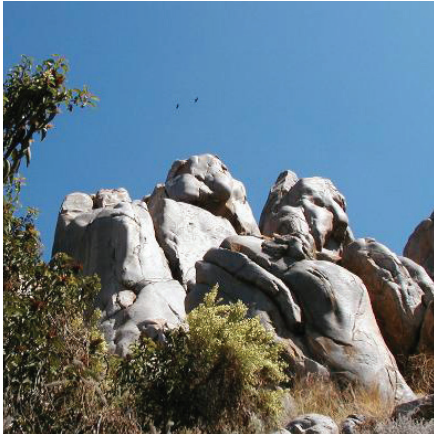
Middle Schools

Lewis (6-8): 5170 Greenbrier Ave. (92120)
(619) 583-3233 / www.sandi.net/lewis

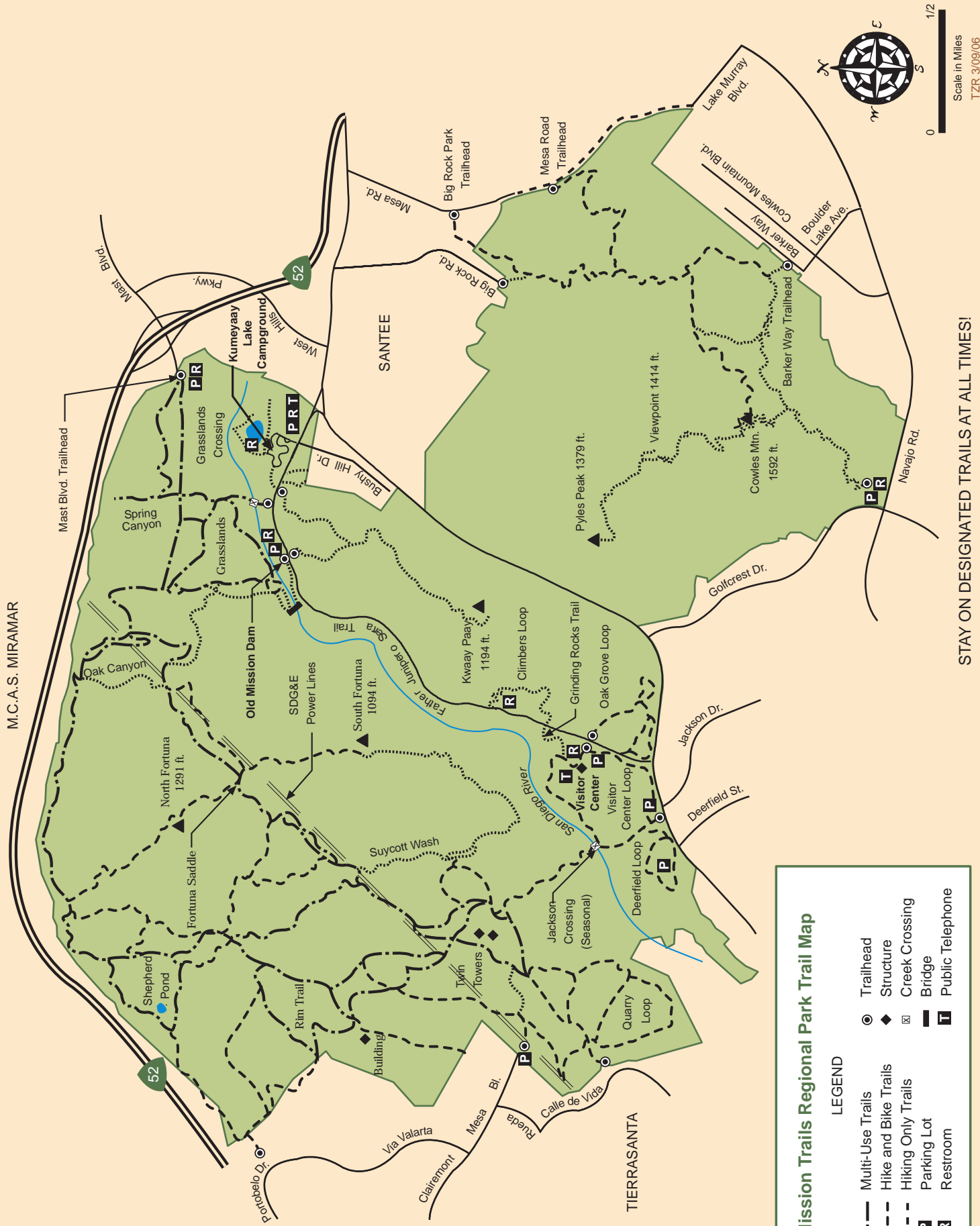
Pershing (6-8): 8204 San Carlos Dr. (92119)
(619) 465-3234 / <http://www.sandi.net/pershing>

High Schools

Henry: 6702 Wandermere Dr. (92120)
(619) 286-7700 / www.sandi.net/henry



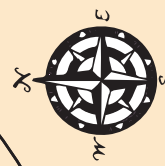
M.C.A.S. MIRAMAR



Mission Trails Regional Park Trail Map

LEGEND

- Multi-Use Trails
- - - Hike and Bike Trails
- - - Hiking Only Trails
- P** Parking Lot
- R** Restroom
- Trailhead
- ◆ Structure
- ⊠ Creek Crossing
- Bridge
- T** Public Telephone



Scale in Miles
0 1/2
TZR 3/09/06

STAY ON DESIGNATED TRAILS AT ALL TIMES!

Population and Housing Estimates

ZIP Code 92119



Jan 1, 2021

Total Population	23,230
Household Population	23,167
Group Quarters Population	63
Persons Per Household	2.43

Housing and Occupancy

	Total Units	Households	Vacancy Rate
Structure Type	9,823	9,539	2.9%
Single Family - Detached	6,877	6,680	2.9%
Single Family - Attached	700	681	2.7%
Multi-Family	2,246	2,178	3.0%
Mobile Home and Other	0	0	--

Household Income

Households by Income Category (2010 \$, adjusted for inflation)

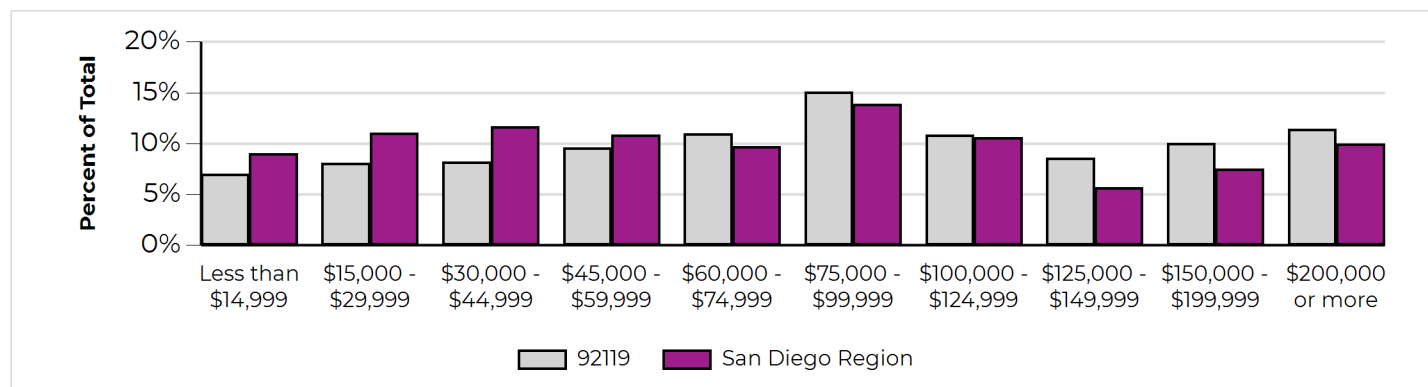
	Less than \$15,000	\$15,000- \$29,999	\$30,000- \$44,999	\$45,000- \$59,999	\$60,000- \$74,999	\$75,000- \$99,999	\$100,000- \$124,999	\$125,000- \$149,999	\$150,000- \$199,999	\$200,000 or more
% of Total	7%	8%	8%	10%	11%	15%	11%	9%	10%	11%

Median Household Income

2021

Adjusted for Inflation (2010 \$) \$85,026

Not adjusted for inflation (current 2020 \$) \$105,279



DATA SOURCES AND IMPORTANT ADVISORY:

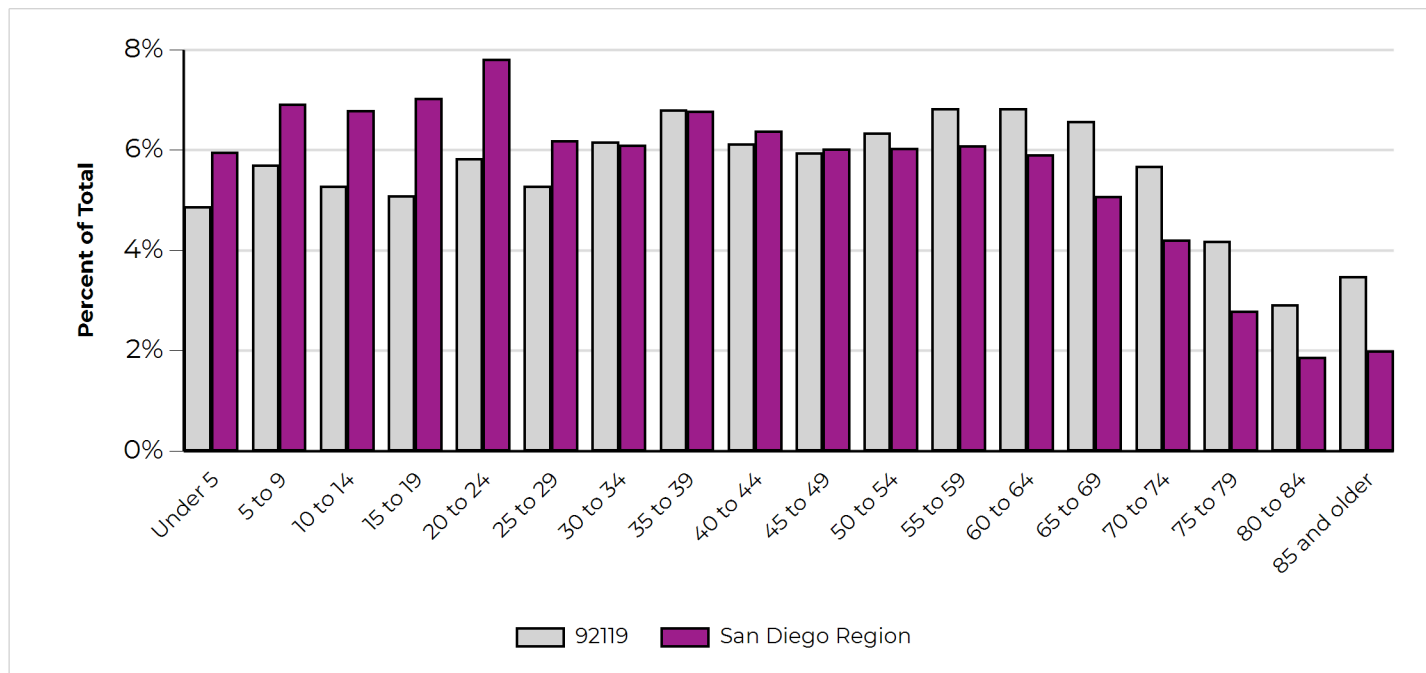
SANDAG Population and Housing Estimates are derived from a composite of data sources, including the California Department of Finance (DOF) E-5 Population and Housing Estimates for Cities, Counties, and the State, 2020-2022; the 2021 SANDAG Land Use and Housing Units inventory; the Census American Community Survey (ACS) Detailed tables; and the vintage 2020 DOF P-3 Race/Ethnicity and Sex by Age for California and Counties.

Caution should be taken when using Population and Housing Estimates, especially for small areas of geography. Sampling error inherent with the data may materially impact the reliability of the estimates, resulting in a substantial margin of error. Additionally, conclusions should not necessarily be drawn about small differences between two or more estimates because they may not reflect statistically significant differences.

Population by Age and Sex

	Total	Male	Female	Percent Female
Total Population	23,230	11,357	11,873	51%
Under 5	1,134	574	560	49%
5 to 9	1,325	666	659	50%
10 to 14	1,229	607	622	51%
15 to 17	757	362	395	52%
18 and 19	426	211	215	50%
20 to 24	1,356	736	620	46%
25 to 29	1,228	626	602	49%
30 to 34	1,433	729	704	49%
35 to 39	1,580	806	774	49%
40 to 44	1,425	709	716	50%
45 to 49	1,382	680	702	51%
50 to 54	1,474	733	741	50%
55 to 59	1,588	804	784	49%
60 and 61	656	322	334	51%
62 to 64	931	448	483	52%
65 to 69	1,527	711	816	53%
70 to 74	1,321	616	705	53%
75 to 79	972	426	546	56%
80 to 84	677	258	419	62%
85 and older	809	333	476	59%
Under 18	4,445	2,209	2,236	50%
65 and older	5,306	2,344	2,962	56%
Median Age	44.0	42.5	45.5	N/A

Population by Age



Population by Race, Ethnicity and Age

	Hispanic	Non-Hispanic				
		White	Black	American Indian	Asian & Pacific Isl.	All Other
Total Population	4,110	15,820	682	108	1,689	821
Under 5	288	704	30	3	54	55
5 to 9	328	822	41	2	77	55
10 to 14	343	697	45	8	60	76
15 to 17	180	461	20	1	44	51
18 and 19	85	271	21	4	23	22
20 to 24	344	752	44	8	102	106
25 to 29	304	732	35	8	87	62
30 to 34	265	943	35	12	117	61
35 to 39	283	1,035	58	11	131	62
40 to 44	258	906	68	6	132	55
45 to 49	268	866	48	9	149	42
50 to 54	294	976	42	4	128	30
55 to 59	247	1,155	40	6	99	41
60 and 61	80	489	13	5	54	15
62 to 64	100	716	31	2	62	20
65 to 69	151	1,190	39	7	113	27
70 to 74	115	1,064	24	7	98	13
75 to 79	68	802	15	3	74	10
80 to 84	51	543	22	1	52	8
85 and older	58	696	11	1	33	10
Under 18	1,139	2,684	136	14	235	237
65 and older	443	4,295	111	19	370	68
Median Age	33.5	48.4	40.9	38.6	45.6	28.7