

SEASIDE RIDGE

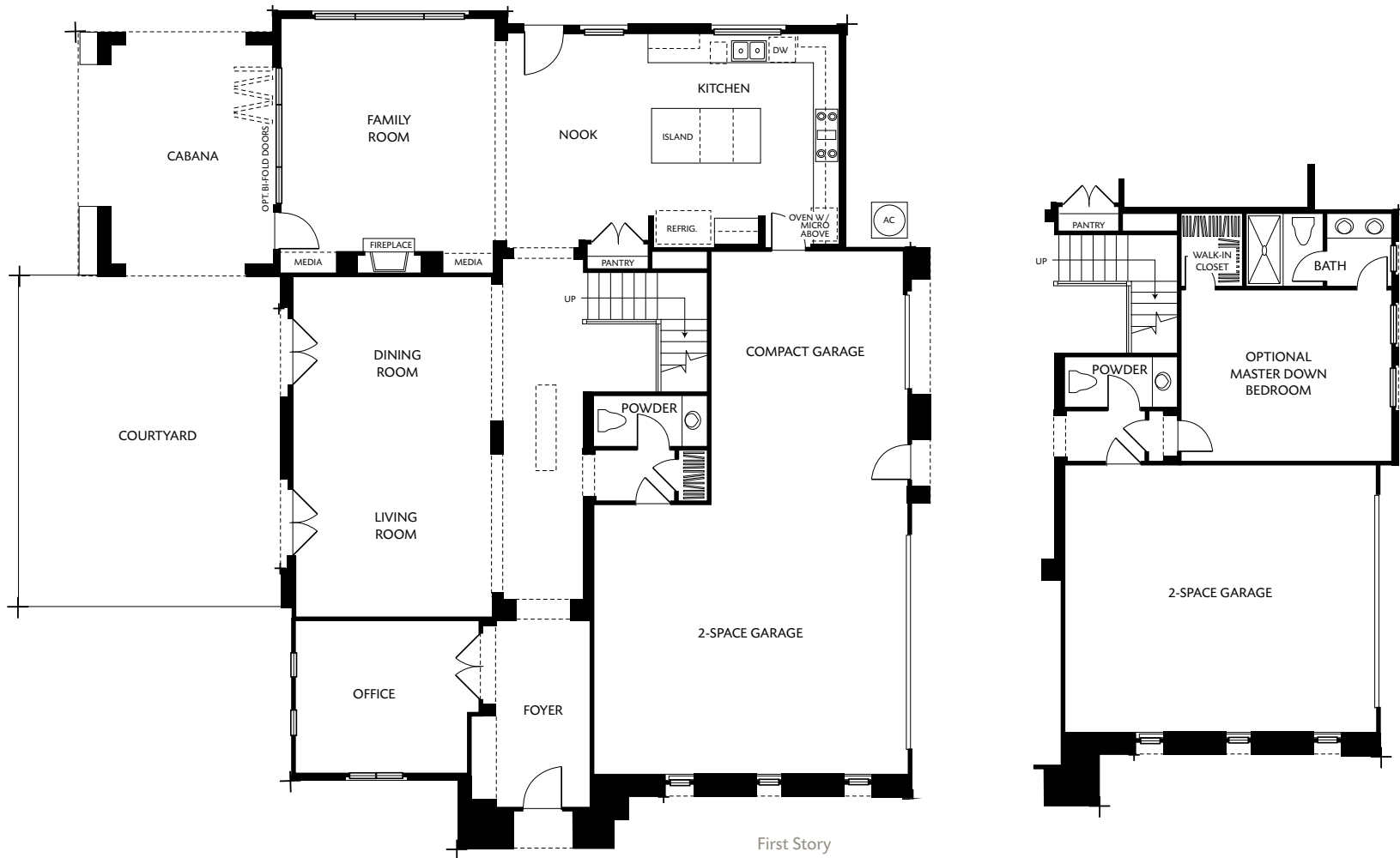
ENCINITAS, CA



SEASIDE RIDGE

813 Sandy Court | Homesite 7 | Plan Three W Monterey Ranch

Two Story Residence | Monterey Ranch Architecture | Approx. 3,922 Square Feet | 4 Bedrooms | 3 1/2 Baths | 3 Space Garage
Including Gourmet Kitchen | Breakfast Nook | Office | Cabana | Courtyard | Optional Guest Suite



All square footage is approximate. Plan, pricing and product information subject to change. See Brookfield Representative for details. Copyright© 2014 Brookfield Residential, LLC. All rights reserved. Corporate license #00991326. 4/2014. Equal Housing Opportunity

SEASIDE RIDGE

813 Sandy Court | Homesite 7 | Plan Three W Monterey Ranch

Two Story Residence | Monterey Ranch Architecture | Approx. 3,922 Square Feet | 4 Bedrooms | 3 1/2 Baths | 3 Space Garage
Including Gourmet Kitchen | Breakfast Nook | Office | Cabana | Courtyard | Optional Guest Suite



Second Story

All square footage is approximate. Plan, pricing and product information subject to change. See Brookfield Representative for details. Copyright© 2014 Brookfield Residential, LLC. All rights reserved. Corporate license #00991326. 4/2014. Equal Housing Opportunity

BrookfieldSoCal.com



To visit Seaside Ridge from Interstate 5, exit Leucadia Blvd. and head east. Turn left on Urania Ave. and continue on Urania past Normandy Rd. Turn right on Dolphin Circle and Seaside Ridge will be on your right.

813 Sandy Court, Encinitas, CA 92024 | tel 800.507.6871 | fax 858.255.6933

Brookfield Residential

The Best Places to Call Home

