



**Sycamore**  
at the Foothills

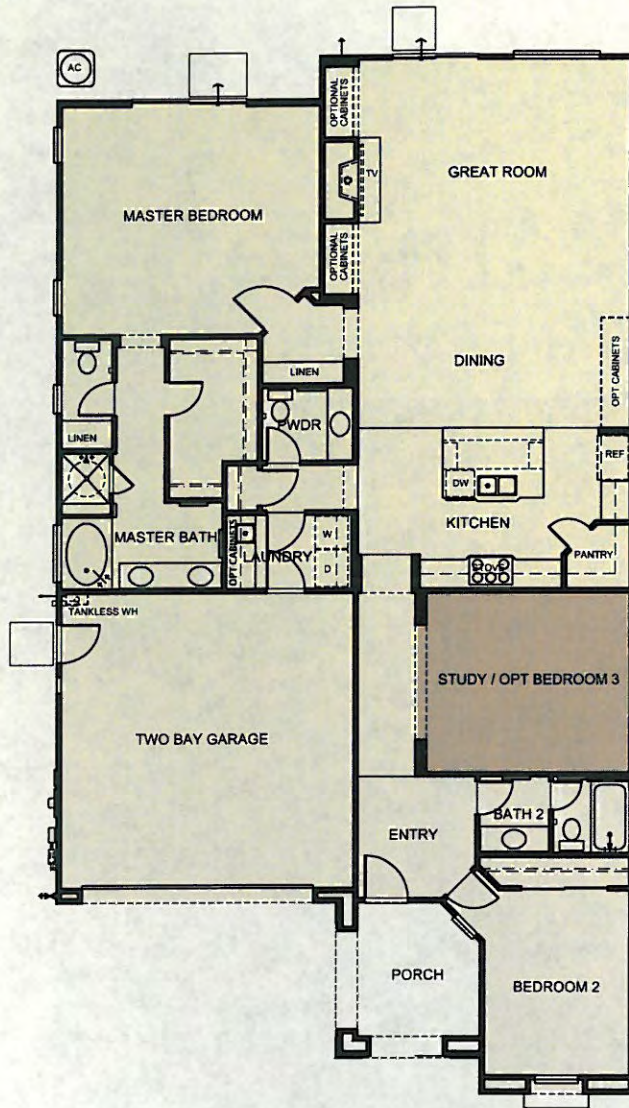
**D·R·HORTON**  
*America's Builder*

# Residence 1



**Sycamore**  
at the Foothills

- Single Story
- 1,998 Square Feet
- 2 Bedrooms, 2 1/2 Baths
- Study
- Great Room
- 2-Bay Garage
- Optional Bedroom 3 at Study



Floor plan shown is a "Mission" elevation.



1 ~ Mission



1 ~ California Bungalow

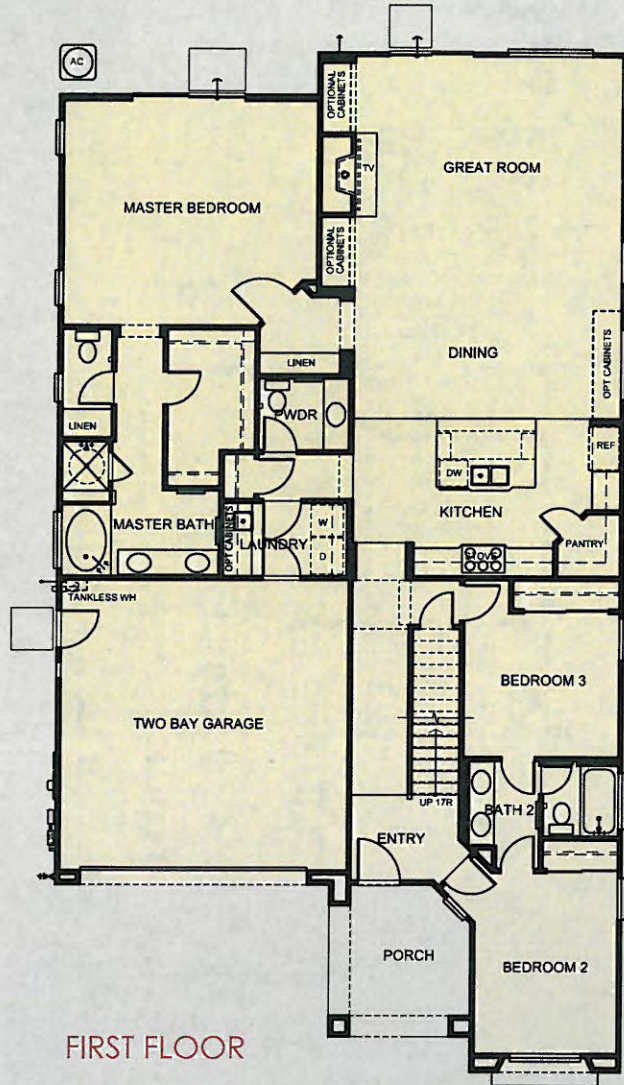


1 ~ Italian Tuscan

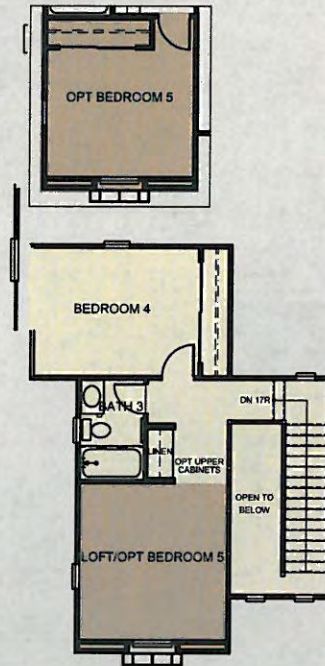
# Residence 1x

(not modeled)

- Two Story
- 2,466 Square Feet
- 4 Bedrooms, 3 1/2 Baths
- Loft
- Great Room
- 2-Bay Garage
- Optional Bedroom 5 at Loft



FIRST FLOOR



SECOND FLOOR

Floor plan shown is a "Mission" elevation.



1X ~ Mission



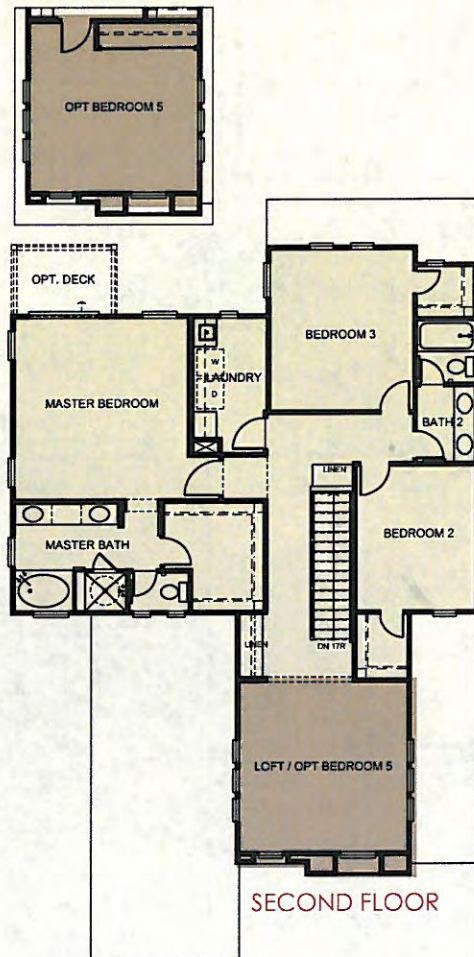
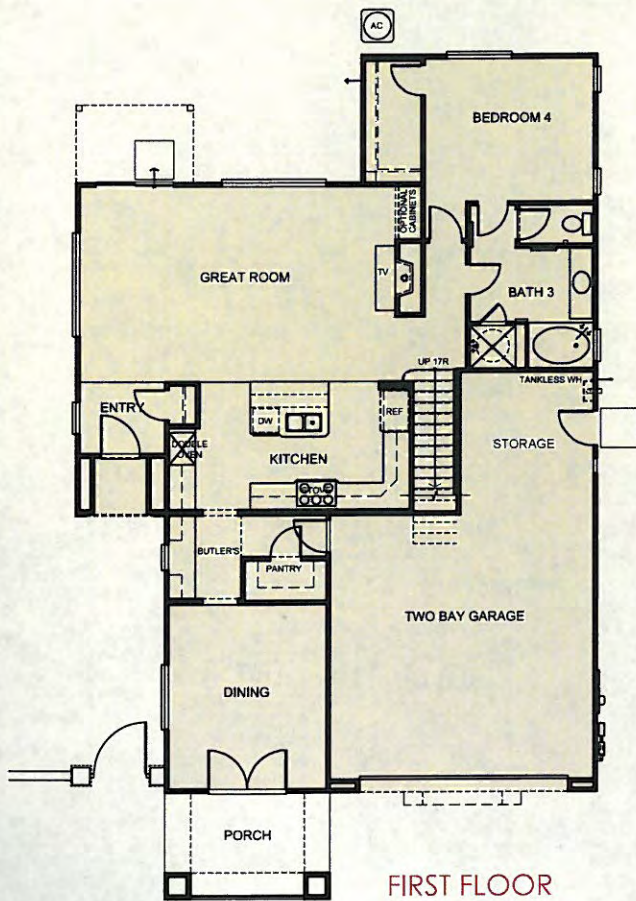
1X ~ California Bungalow



1X ~ Italian Tuscan

# Residence 2

- Two Story
- 2,730 Square Feet
- 4 Bedrooms, 3 Baths
- Loft
- Great Room
- 2-Bay Garage with Storage
- Optional Bedroom 5 at Loft



Floor plan shown is a "Italian Tuscan" elevation.



2 ~ Mission



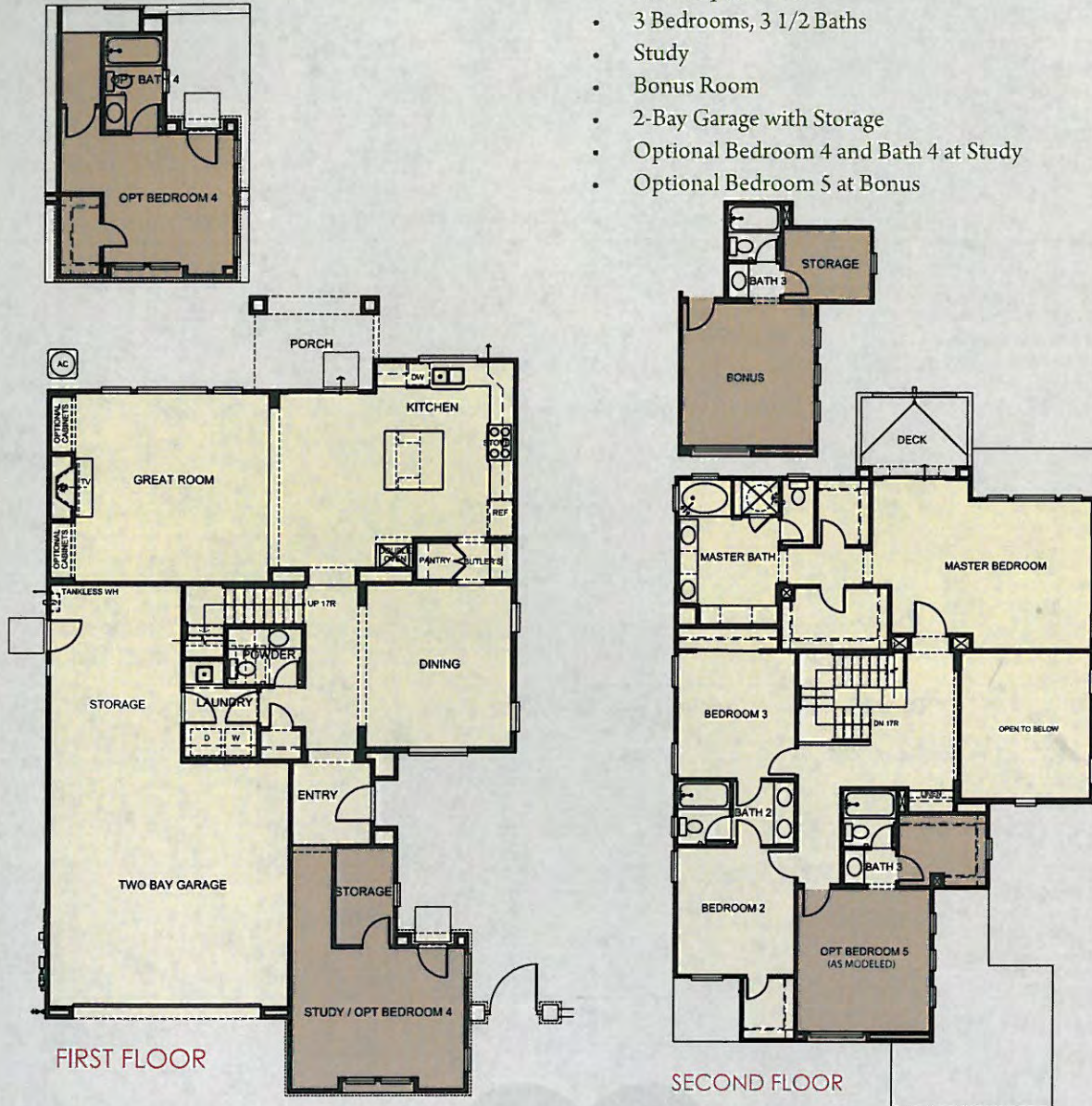
2 ~ California Bungalow



2 ~ Italian Tuscan

# Residence 3

- Two Story
- 2,982 Square Feet
- 3 Bedrooms, 3 1/2 Baths
- Study
- Bonus Room
- 2-Bay Garage with Storage
- Optional Bedroom 4 and Bath 4 at Study
- Optional Bedroom 5 at Bonus



Floor plan shown is a "California Bungalow" elevation.



3 ~ Mission



3 ~ California Bungalow



3 ~ Italian Tuscan

# FEATURES

## EXTERIOR AMENITIES

Designed by award winning Starck Architecture & Planning  
Concrete driveways and walkways  
Covered entries  
Distinctive exterior styles  
Designer selected exterior colors with light texture stucco finish  
Fully drywalled garages with garage door opener  
Sectional steel, insulated, roll-up doors  
Fire resistant concrete tile roofs  
Vinyl dual glazed windows  
ThermaTru raised panel entry doors  
Underground utilities

## INTERIOR AMENITIES

13" x 13" Ceramic tile flooring  
Raised panel wardrobe doors  
Pre-finished Maple cabinetry  
Upper cabinets in laundry (per plan)  
Plush carpeting in choice of designer colors  
Central air conditioning  
Sculpted bullnose drywall corners  
Pre-wired for cable in Great Room and all bedrooms and CAT5  
phone wiring in Great Room, Kitchen, and all bedrooms  
Interior laundry rooms with laundry sink and engineered stone  
countertops  
Detailed trim package

## GOURMET KITCHENS

Bright, airy kitchens with granite slab countertops  
White-on-White General Electric appliances  
30" electric oven (residence 1 and 1x)  
Electric double oven (residence 2 and 3)  
36" gas cooktop with 5 sealed burners  
Microwave hood combo above cooktop  
Five cycle dishwasher (Energy Star)  
Generous pantry storage  
Waste disposal  
Plumbed for ice maker  
Custom crafted pre-finished Maple cabinetry  
White pressed steel double compartment sink with Moen faucet  
Spacious islands  
Butler's pantry (select locations)

## MASTER SUITES

Engineered stone Pullman countertops with dual china sinks  
Tile shower and tub surround with engineered stone deck  
Spacious walk-in closets  
Separate dressing, bath and compartmentalized water closet  
Moen plumbing fixtures  
Full width vanity mirror  
Pre-finished Maple cabinets

## SECONDARY BATHS

Fiberglass tub/shower with stamped tile surrounds  
Engineered stone Pullman countertops with china sink  
Moen plumbing fixtures

## ENERGY EFFICIENT & SAFETY FEATURES

Economical central gas forced air heating with pilotless ignition and  
night set back thermostat  
Pilotless cooktop  
Low flow shower heads and toilets  
Energy efficient tankless gas water heater (Energy Star)  
Energy efficient dual pane windows  
Energy efficient recessed lighting fixtures and switches  
Insulated ThermaTru entry doors with weatherstripping  
Advanced warning smoke detectors  
Radiant Barrier roof sheathing assists in reducing home energy usage  
Direct vent gas fireplace

## OPTIONAL AMENITIES

Pre-finished cabinet colors and style upgrades  
Upgraded stainless steel kitchen appliance package  
Refrigerator, Washer/Dryer  
Choice of colored ceramic, granite and marble tiles  
Granite and marble slab counter upgrades  
Mirrored bypass closet doors (plan specific)  
Upgraded baseboards and door casings (per plan)  
Crown moulding (dining room and master bedrooms)  
Stair rail upgrades  
Wood mantle upgrades  
Clear and obscure tub/shower enclosures  
Additional electrical upgrades  
Phone, TV and computer networking packages  
Security systems  
Window treatments



3713 Glen Avenue  
Carlsbad, CA 92010  
DRHorton.com  
(760) 434-2651

**D·R·HORTON**  
America's Builder

In an effort to improve our product to meet consumer needs, D.R. Horton, Inc. reserves the right to modify features, specifications, plans, and pricing without notice and/or obligation. All square footage is approximate. Not all features are available in all plans. Entry, ceiling, window, and wall configurations vary per plan and elevation. All renderings are artists' illustrations. See sales representatives for details. © 2012 D.R. Horton, Inc.

D.R. Horton Los Angeles Holding Company, Inc. - CA DRE License #01258550 REV-3/16/12 SAP-11/17/11

