



Torrey Ranch

30 YEARS AGO, Donald R. Horton had a vision . . .

Of livable and affordable new homes built with unmatched efficiencies and uncompromising quality. Of traditions passed on to new generations. Of a business that would grow by making customers' dreams a reality.

That philosophy of creating value every step of the way was the Company's signature focus when Horton unveiled his first neighborhood in the Dallas/Ft. Worth area nearly three decades ago. As the Company grew from a local homebuilder, to a regional homebuilder, to ultimately the largest homebuilder in the United States, that philosophy has never wavered.

Today, D.R. Horton continues to demonstrate its leadership in residential development through design and innovation, superior craftsmanship, and its responsiveness to the needs of its customers.

The simple vision that began nearly thirty years ago represents years of value and security when you choose America's Builder to make your dreams come true.



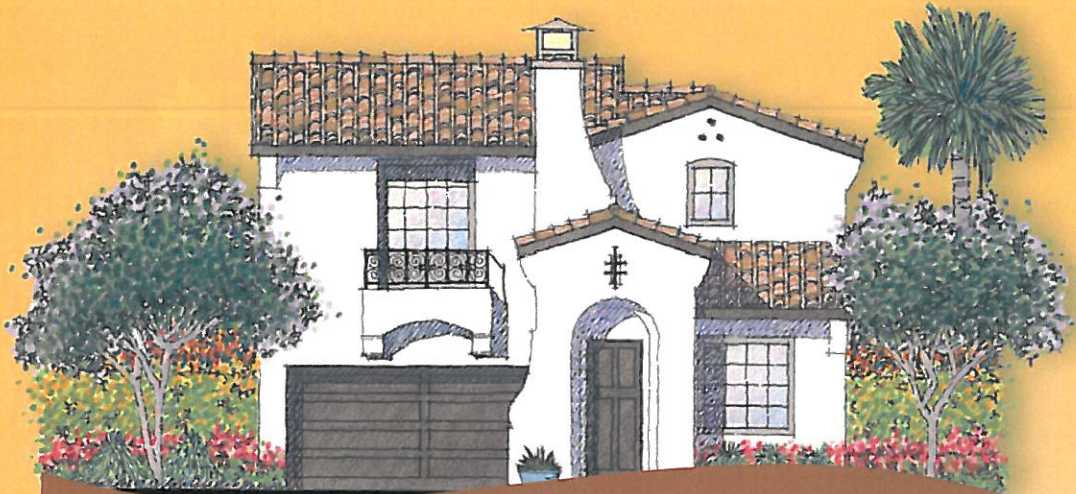


Torrey Ranch

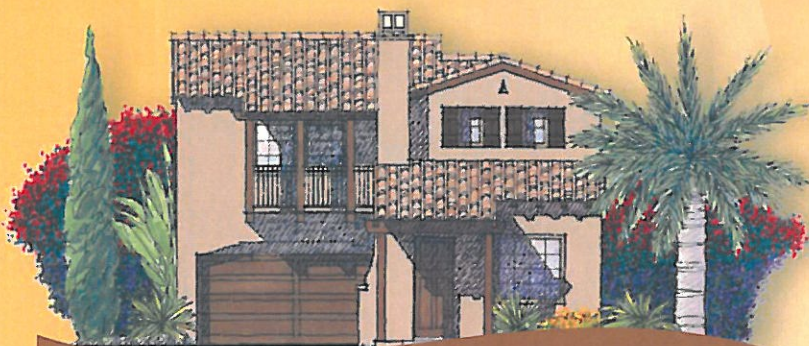
Make some memories.

Torrey Ranch is a compelling new-home community designed with young and growing families in mind. Each residence combines extraordinary architecture, spacious floorplans, and quality appointments to create the perfect place for your family to call home.

D·R·HORTON DHI
Listed
NYSE
America's Builder



A



B



C

RESIDENCE ONE

(not modeled)

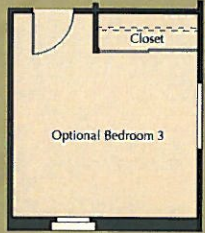
- two story
- approx. 1,725 square feet
- 2 bedrooms + loft, 2.5 baths
- living room with fireplace
- 2-car garage
- optional bedroom 3 at loft



FIRST FLOOR



SECOND FLOOR



Floor plan shown is an "A" elevation.



A



B

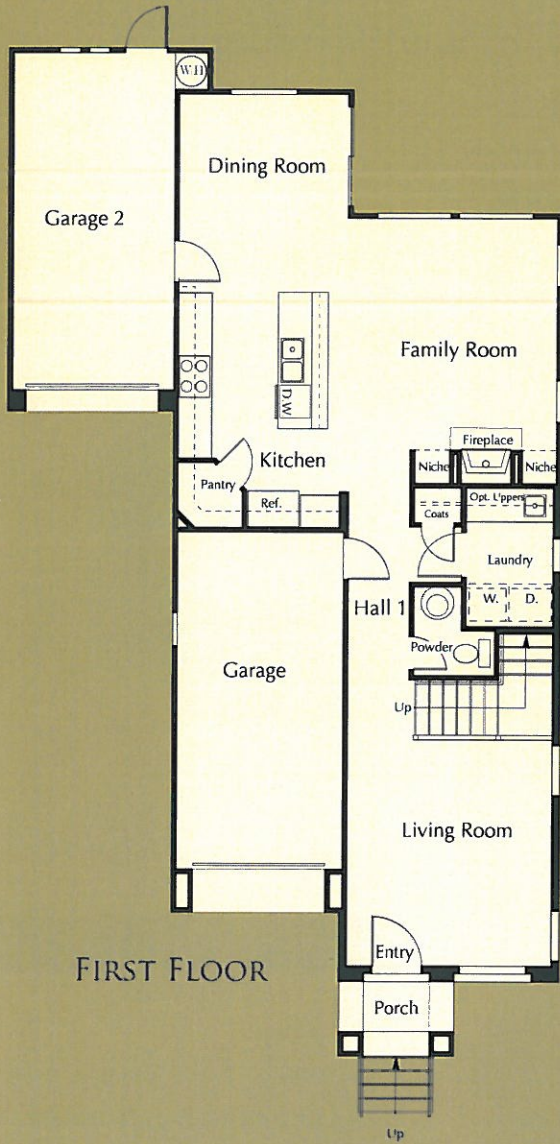


C

RESIDENCE TWO

- two story
- approx. 1,812 square feet
- 3 bedrooms, 2.5 baths
- family room with fireplace
- living room
- 2-car split garage
- optional retreat at bedroom 2

RESIDENCE TWO

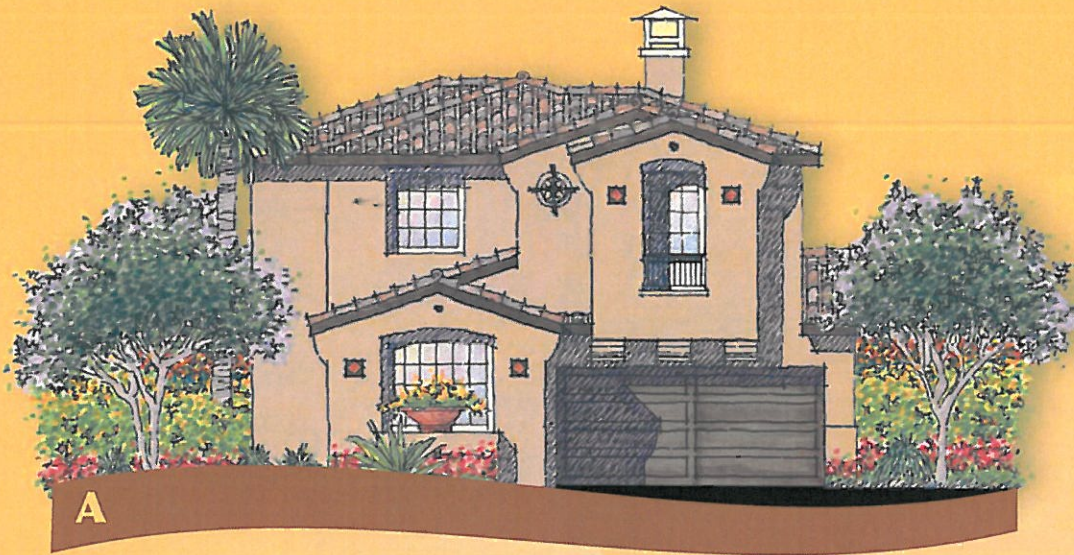


FIRST FLOOR



SECOND FLOOR

Floor plan shown is a "B" elevation.



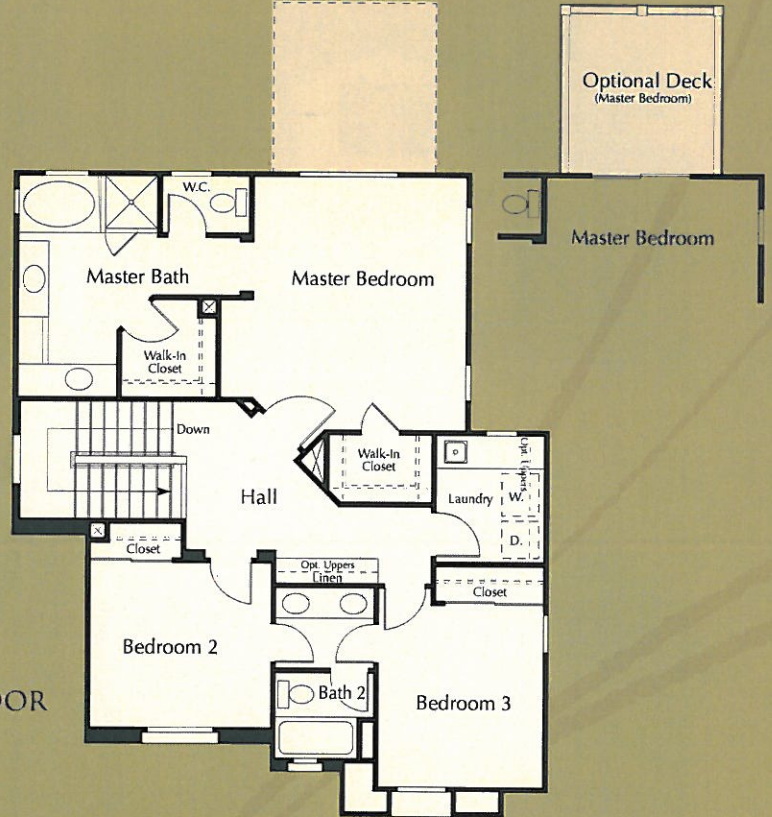
RESIDENCE THREE

(not modeled)

- two story
- approx. 1,920 square feet
- 3 bedrooms, 2.5 baths
- den
- living room with fireplace
- 2-car garage
- optional bedroom 4 with bath 3 at den



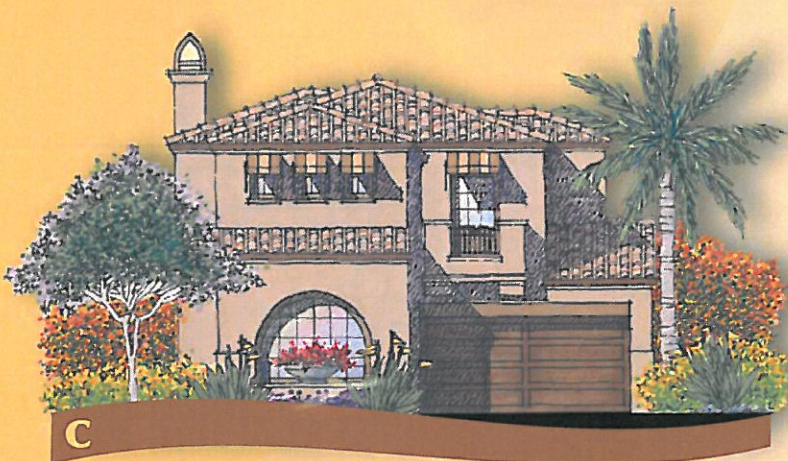
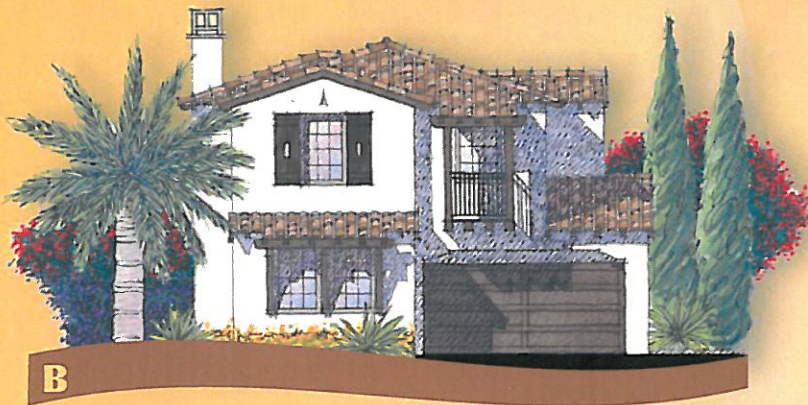
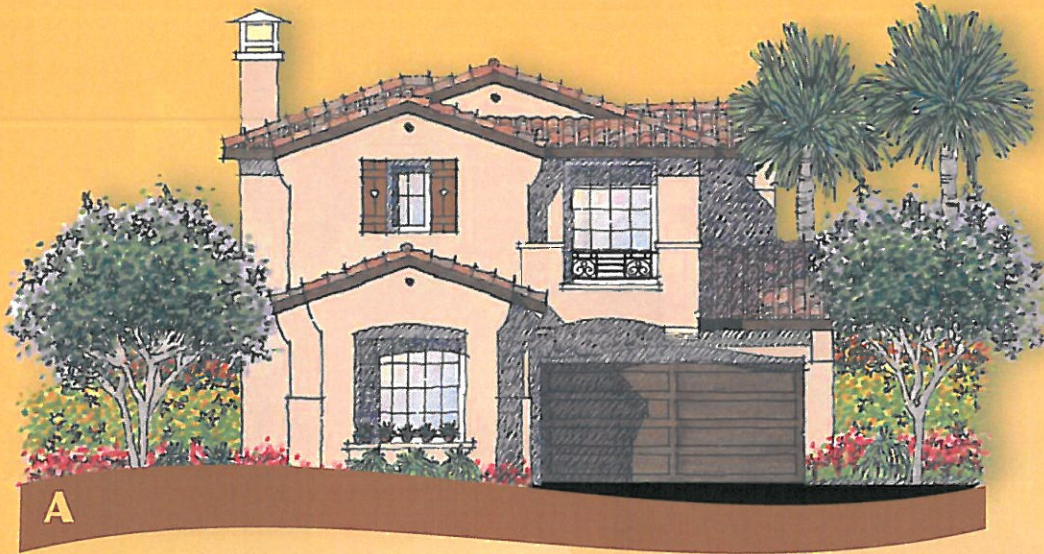
FIRST FLOOR



SECOND FLOOR

Floor plan shown is an "A" elevation.

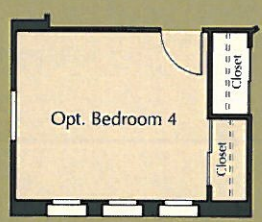
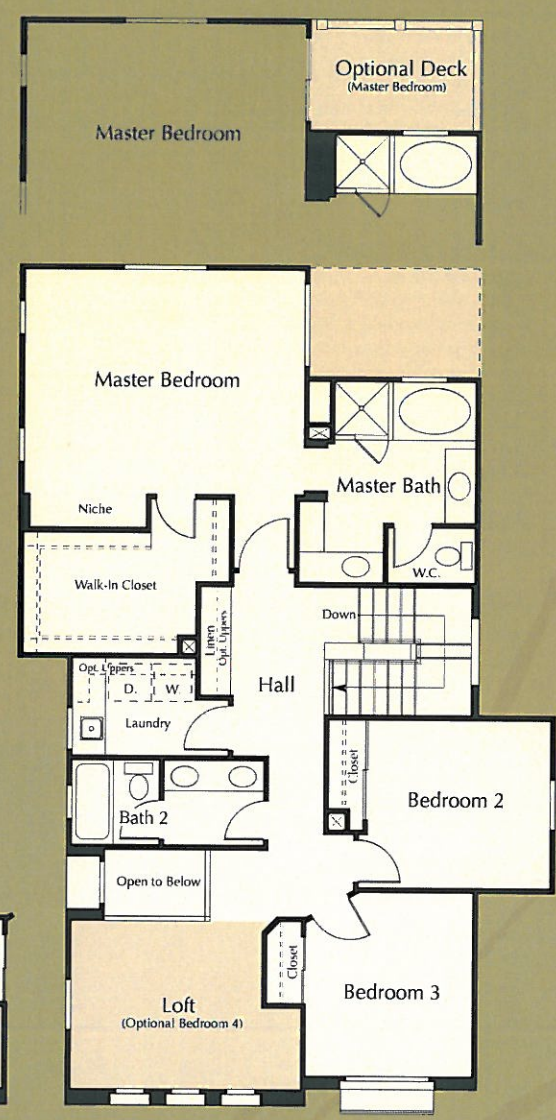
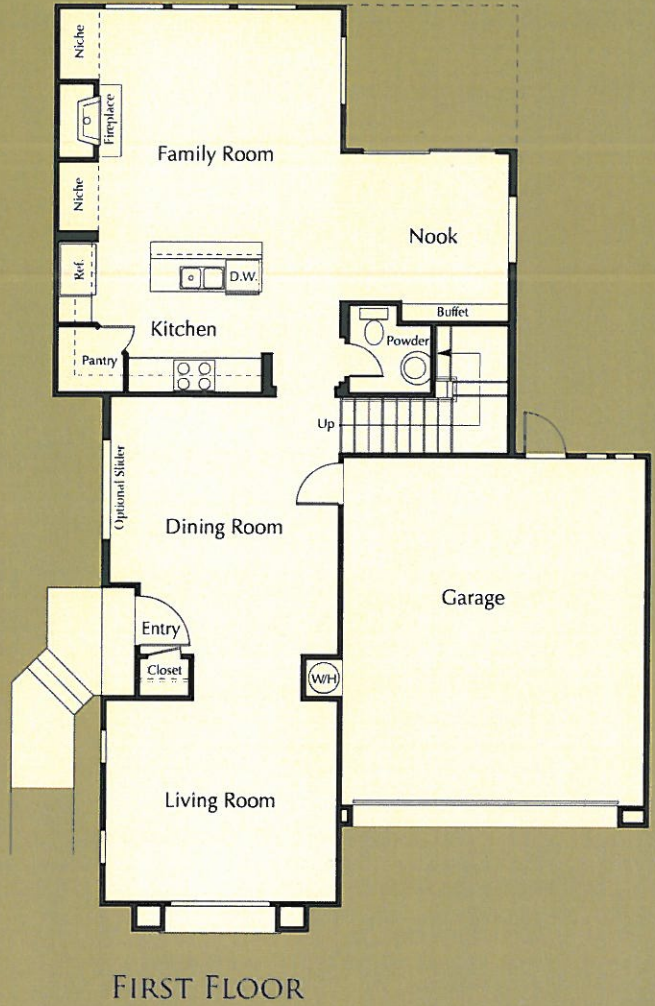
Torrey Ranch



RESIDENCE FOUR

- two story
- approx. 2,234 square feet
- 3 bedrooms, 2.5 baths
- family room with fireplace
- living room
- loft
- 2-car garage
- optional bedroom 4 at loft

RESIDENCE FOUR



FIRST FLOOR

SECOND FLOOR

Floor plan shown is a "C" elevation.

Features

EXTERIOR AMENITIES

Designed by award winning Starck A+P
Concrete driveways and walkways
Distinctive exterior styles
Designer selected exterior colors with light texture stucco finish
Attached 2-car garages with direct interior access (per plan)
Fully drywalled garages with garage door openers
Sectional steel, insulated, roll-up doors
Fire resistant concrete tile roofs
Vinyl dual glazed windows
ThermaTru raised panel entry doors
Gas stub for backyard BBQ

INTERIOR AMENITIES

Ceramic tile flooring at entry
Raised panel wardrobe doors
Pre-finished Beech cabinetry
Plush carpeting in choice of designer colors
Easy care, no wax vinyl flooring
Central air conditioning
Sculpted bullnose drywall corners
Generous walk-in closets (per plan)
Pre-wired for telephone and cable TV with Cat 5 wiring
Interior laundry rooms
Detailed trim package
Gas fireplace

GOURMET KITCHENS

Bright, airy kitchens with granite slab countertops
White-on-White General Electric appliances
Separate cook top and built-in oven
Microwave/hood combo
Generous pantry storage
Waste disposal
Plumbed for ice maker
Easy care vinyl flooring with choice of designer colors
Custom crafted pre-finished Beech cabinetry
Separate breakfast nook (Plans 1 and 4)
Double enamel sink with Moen faucet
Spacious islands

Our professional design consultants will be happy to help you personalize your home by assisting with the selection of options and upgrades.

MASTER SUITES

Spacious walk-in closets
Separate dressing, bath and compartmentalized water closet
Cultured marble Pullman countertops with dual china sinks
Moen plumbing fixtures
Full width vanity mirror
Pre-finished Beech cabinets
Separate tub and shower

SECONDARY BATHS

Simulated tile tub/shower
Cultured marble Pullman countertops
China sink
Moen plumbing fixtures

ENERGY EFFICIENT & SAFETY FEATURES

Economical central gas forced air heating with pilotless ignition and night set back thermostat
Pilotless cooktop
Low flow shower heads and toilets
Energy efficient gas water heater with glass lining
Energy efficient dual pane windows
Energy efficient recessed lighting fixtures and switches
Insulated ThermaTru entry doors with weatherstripping
Advanced warning smoke detectors
Radiant Barrier roof sheathing assists in reducing home energy usage
Direct vent fireplaces

OPTIONAL AMENITIES

Pre-finished cabinet colors and style upgrades
Upgraded stainless steel kitchen appliance package
Refrigerator, Washer/Dryer
Choice of colored ceramic, granite and marble tiles
Granite and marble slab counter upgrades
Mirrored bypass closet doors (plan specific)
Upgraded baseboards and door casings (per plan)
Crown moulding (dining room and master bedrooms)
Stair rail upgrades
Wood or precast mantle upgrades
Clear and obscure tub/shower enclosures
Additional electrical upgrades
Phone, TV and computer networking packages
Security systems
Garage windows
Window treatments

Sales Office:
7929 Brooke Vista Lane
San Diego, CA 92129
858.538.0821
DRHorton.com



D·R·HORTON DRI NYSE
America's Builder

In an effort to improve our product to meet consumer needs, D.R. Horton, Inc. reserves the right to modify features, specifications, plans, and pricing without notice and/or obligation. All square footage is approximate. Not all features are available in all plans. Entry, ceiling, window, and wall configurations vary per plan and elevation. All renderings are artists' illustrations. See sales representatives for details. ©2010 D.R. Horton, Inc.

D.R. Horton Los Angeles Holding Company, Inc. - CA DRE License #01258550 SAP-03/31/10 REV: 06/28/10

