

residence one



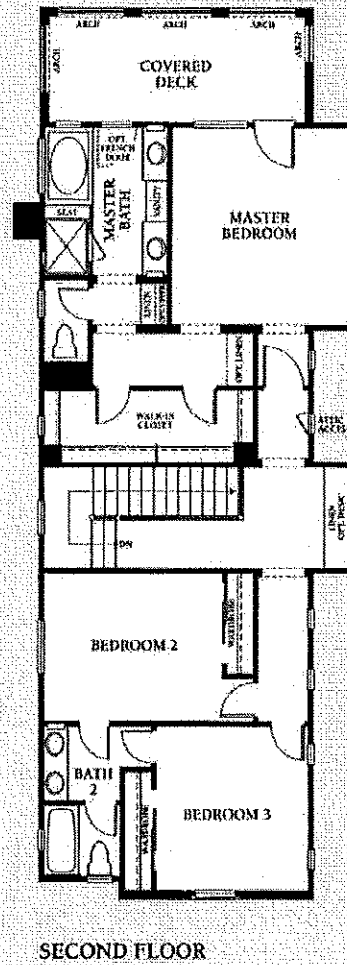
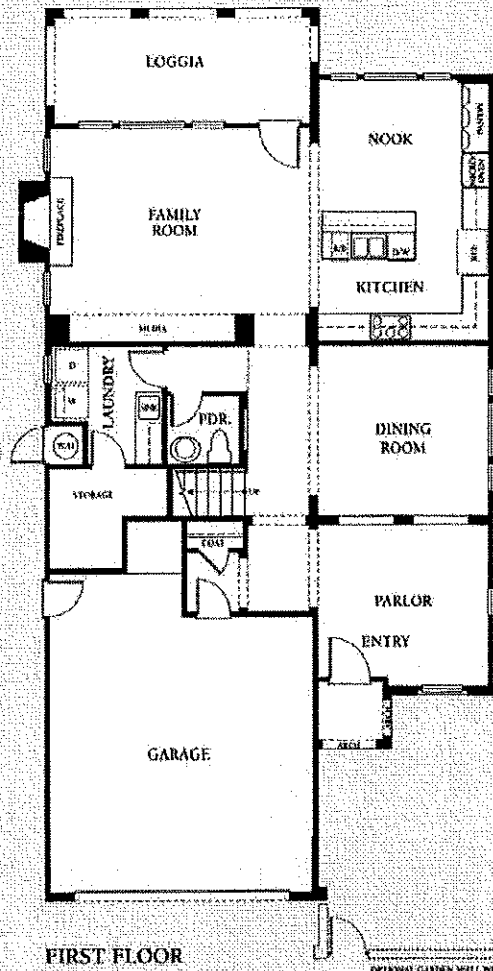
IRA - SPANISH COLONIAL (AS MODELED)



IB - TUSCAN

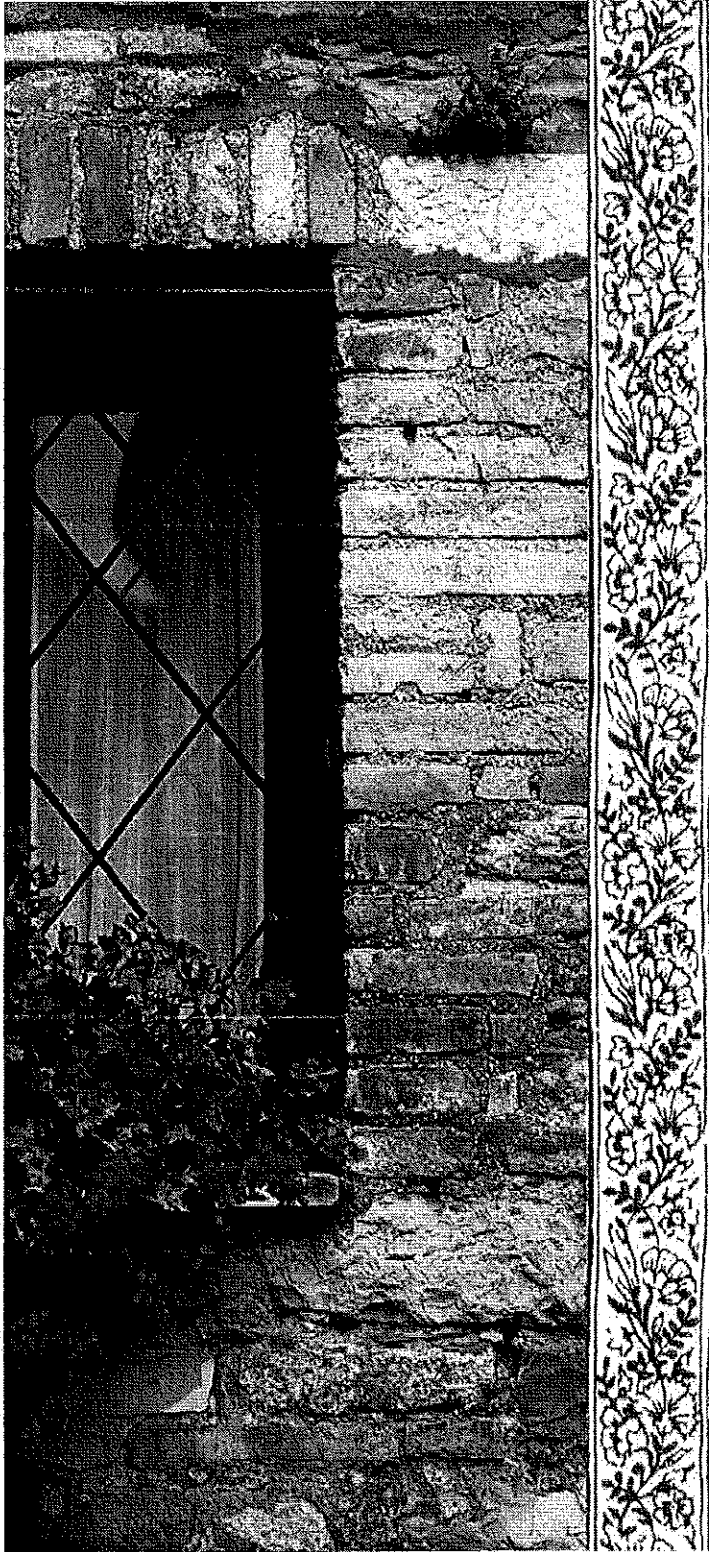


IRC - EUROPEAN COTTAGE
(SHOWN WITH OPTIONAL GARDEN WALL AND GATE)



Approximately 2,448 square feet • 3 bedrooms • 2 1/2 baths • Elegant entry parlor
 Inviting rear loggia plus large second floor covered deck • Oversized 2-space garage • Large storage room

All renderings, floor plans and maps are artist's conception and are not intended to be an accurate representation of buildings, fencing, walks, driveways or landscaping and are not necessarily to scale. Square footages, windows and roof lines vary according to elevation.



2

residence two



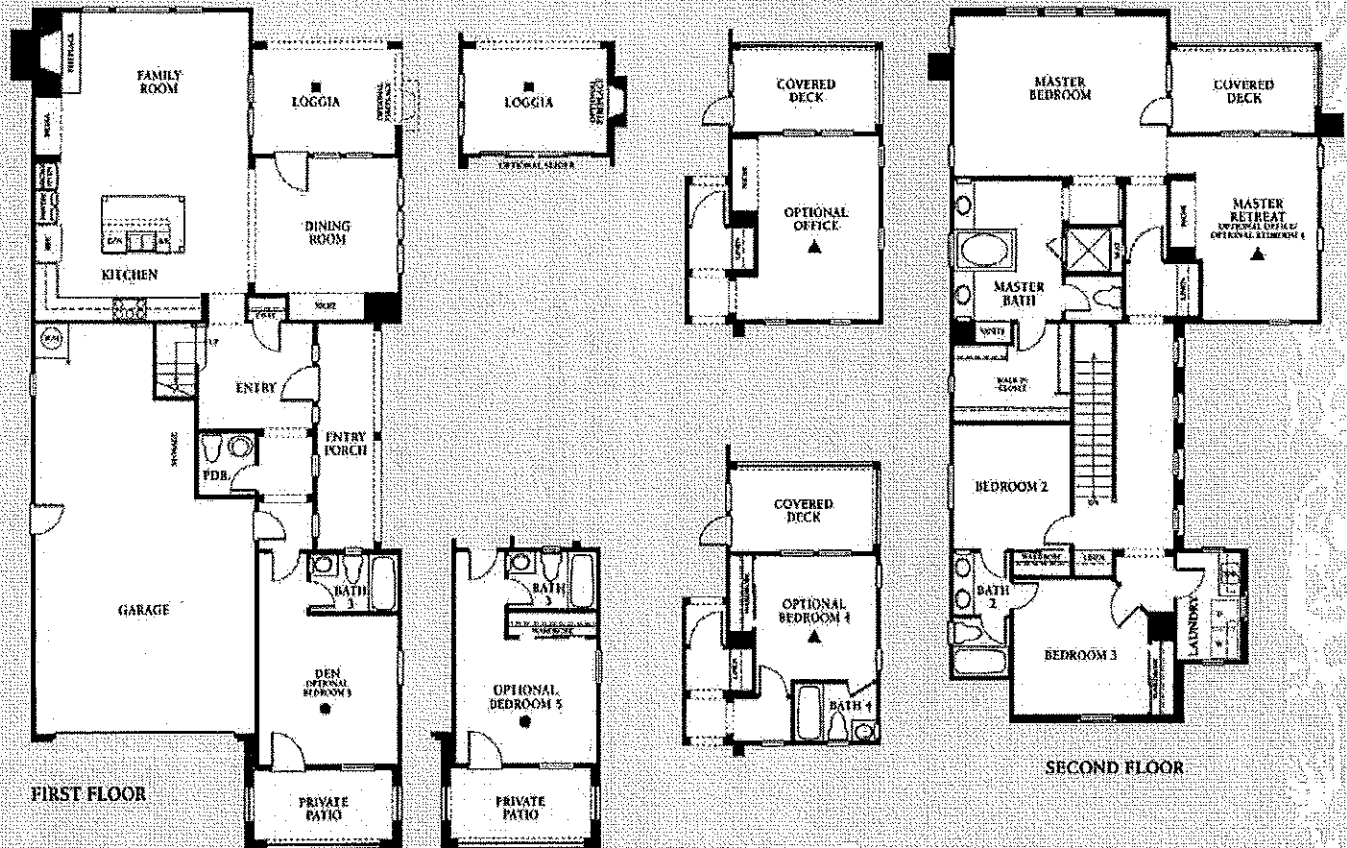
2RB - TUSCAN (AS MODELED)



2D - CRAFTSMAN



2RA - SPANISH COLONIAL

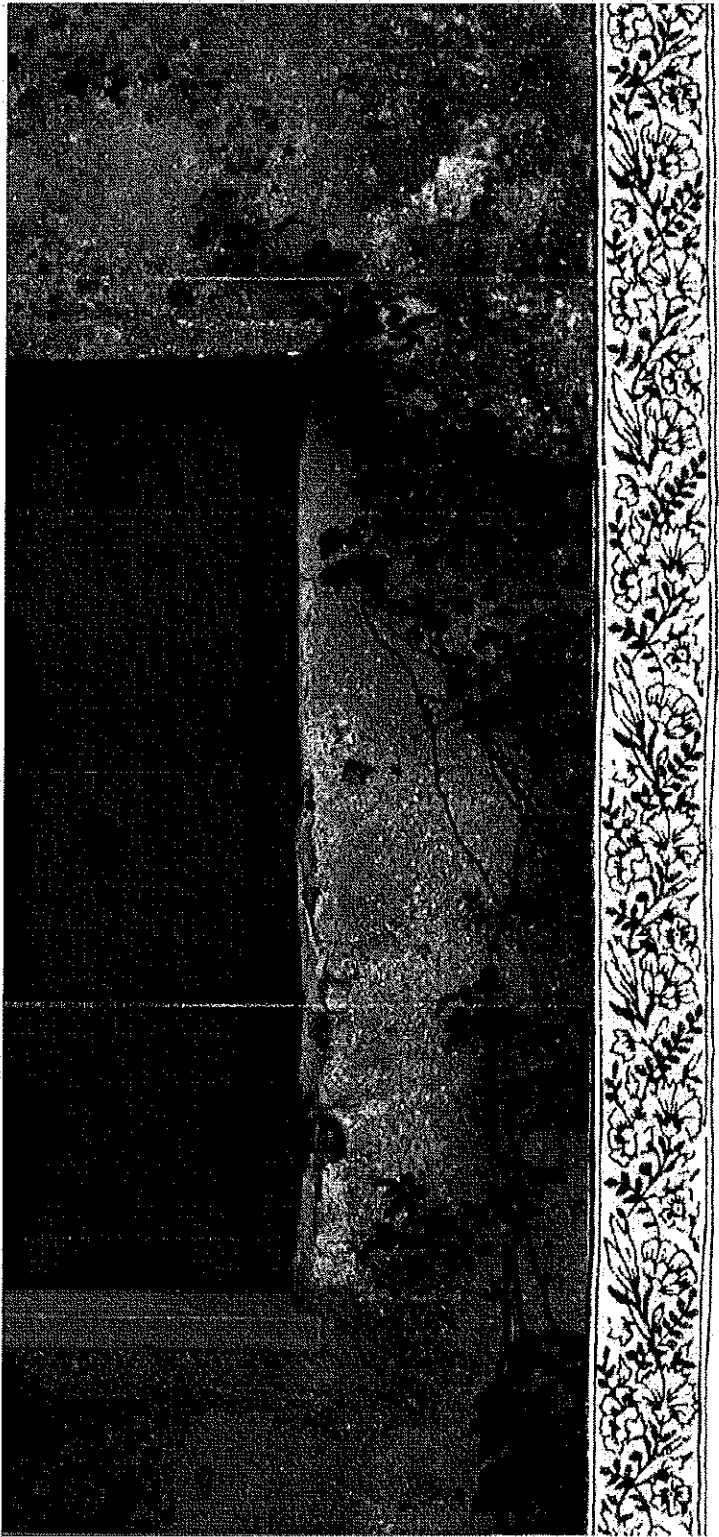


coastal breezes

Approximately 2,745 square feet • 3 bedrooms plus den and retreat • 3 1/2 baths
 Large loggia, second floor covered deck, private patio and covered porch • 3-space tandem garage

*Options: Office or bedroom 4 / bath 4 in lieu of retreat • Bedroom 5 in lieu of den
 Outdoor fireplace at loggia • Four-panel sliding doors at loggia*

All renderings, floor plans and maps are artist's conception and are not intended to be an accurate representation of buildings, fencing, walks, driveways or landscaping and are not necessarily to scale. Square footages, windows and roof lines vary according to elevation.



residence three



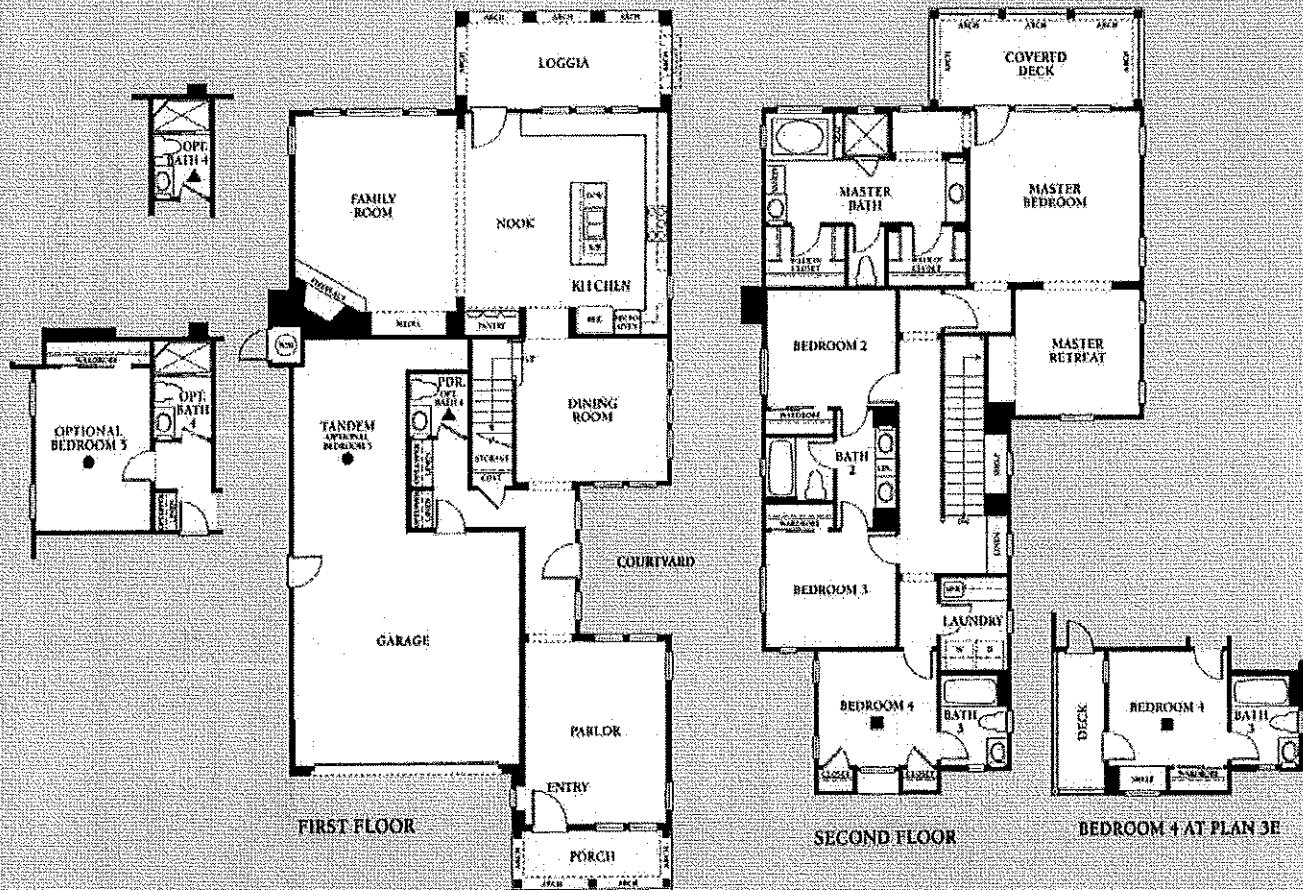
3RC - EUROPEAN COTTAGE (AS MODELED)



3A - SPANISH COLONIAL



3RE - MONTEREY



elegant style

Approximately 2,742 square feet • 4 bedrooms plus retreat • 3 1/2 baths

Inviting rear loggia, second floor covered deck, courtyard and covered front porch • 3-space tandem garage

Options: Bedroom 5/bath 4 in lieu of tandem garage and powder bath • outdoor fireplace at loggia

All renderings, floor plans and maps are artist's conception and are not intended to be an accurate representation of buildings, fencing, walks, driveways or landscaping and are not necessarily to scale. Square footages, windows and roof lines vary according to elevation.