

# AMHERST

## AT 4S RANCH

10229 Prairie Springs Road, San Diego CA 92127 • PHONE (858) 312-1011 • FAX (858) 312-1013



**BROOKFIELD**

HOMES

[www.brookfieldhomes.com](http://www.brookfieldhomes.com)



## *Our Values and Visions.*

We believe that we have a responsibility to our community and continually strive to provide homes that are designed to anticipate the potential of years ahead, as well as reflect the time-tested elements of years past.

We address our customers individually, because each of us has different preferences and each of us desires a home that mirrors our unique selves. Brookfield homes are designed to recognize, to nurture and to celebrate personal identity.

We are in the business of providing architecturally distinctive homes that combine human comfort with the natural beauty of our environment. The neighborhoods and master-planned communities we build are balanced and harmonious, arranged to fulfill the promise of the land.

We conduct ourselves with courtesy, integrity, respect and honesty. In doing so, we continually strive to exceed our customers' expectations and to enrich the lives of all those around us.

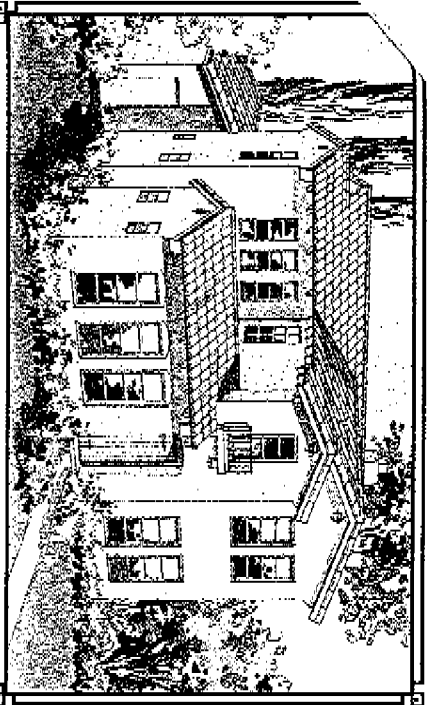


## *Our Commitment To You.*

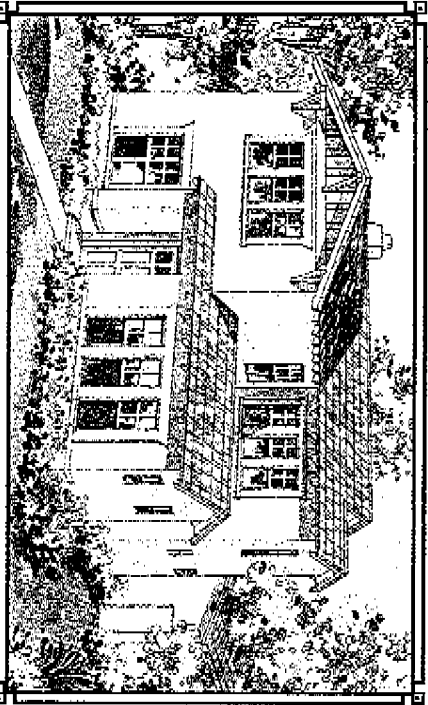
In each of the thousands of homes built since our inception in 1956, we have adhered to the principles which guide us. Brookfield Homes is managed locally by an experienced team that has a vested interest in the business, homes and neighborhoods we build. We live in the community and contribute to its prosperity and quality of life through our work and community service.

While independently and locally operated, Brookfield also draws strength from affiliation with community development and home building operations across the United States and Canada. Brookfield Homes is part of one of North America's largest real estate companies, Brookfield Properties Corporation, a public company with community development, home building and commercial property operations.

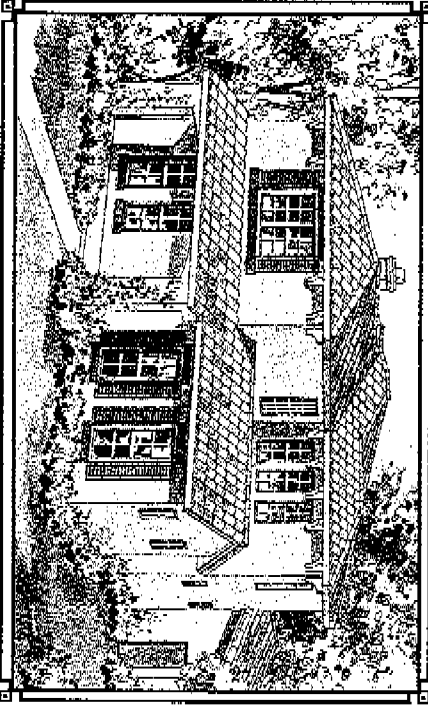




MODEL 1A



1BR

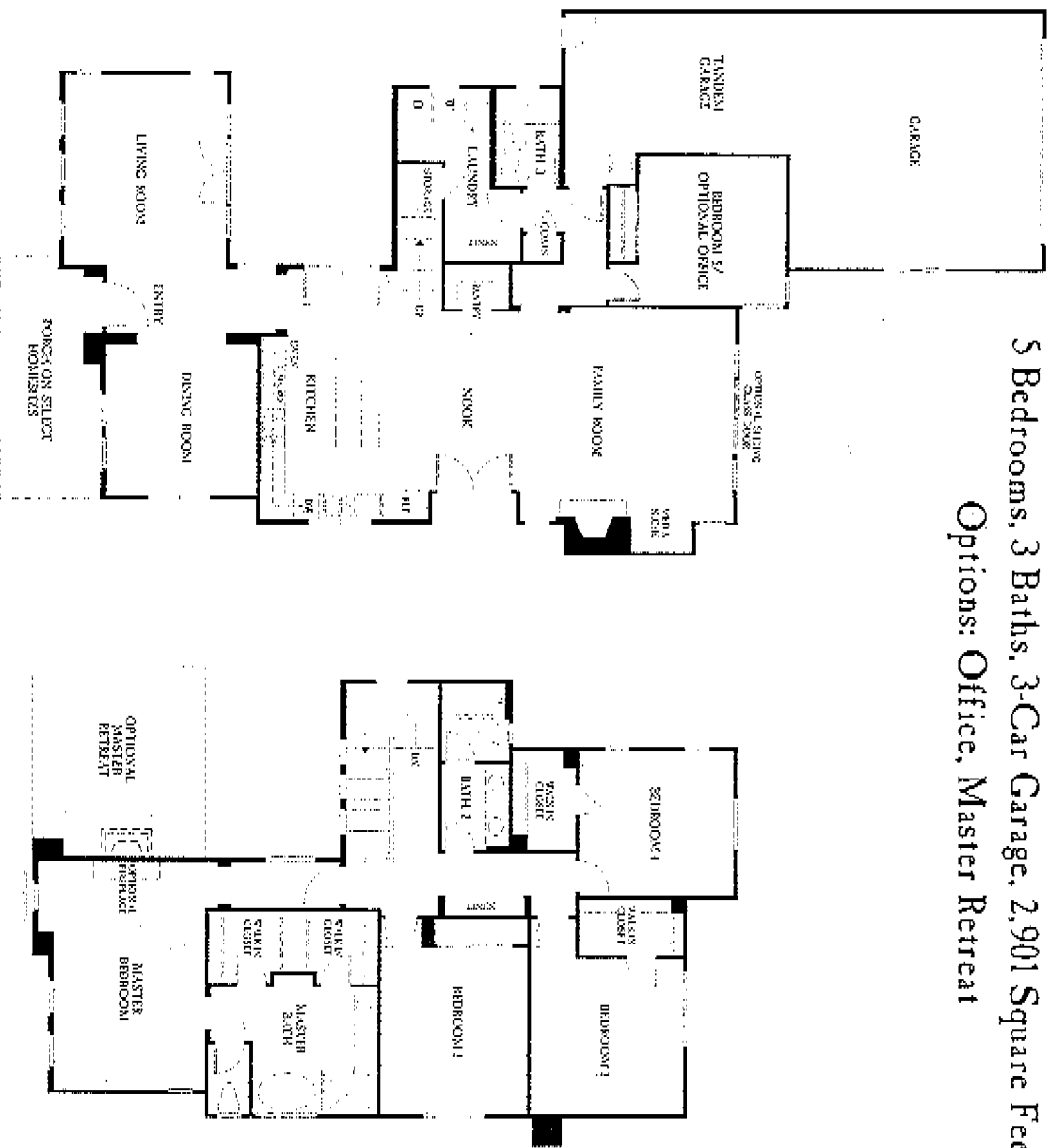


SHOWN WITH PORCH 1CR

# PROVENCE

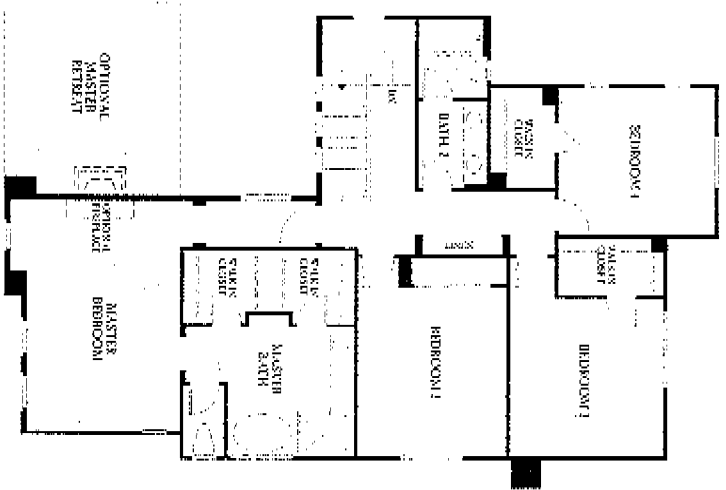
PLAN ONE

5 Bedrooms, 3 Baths, 3-Car Garage, 2,901 Square Feet  
 Options: Office, Master Retreat

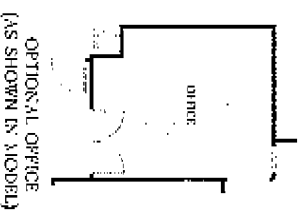


First Floor

Second Floor



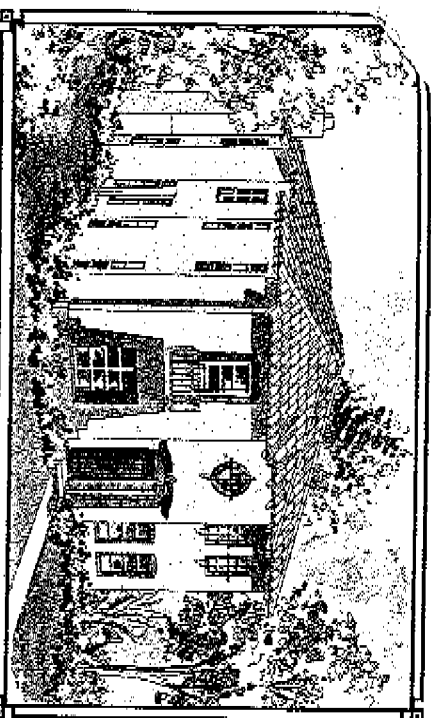
## OPTIONS



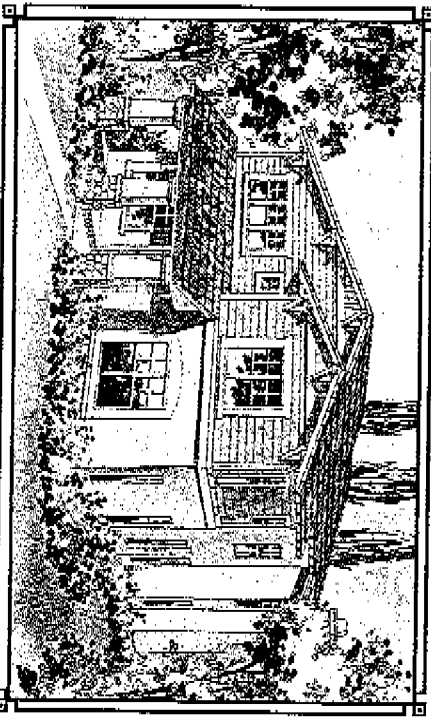
OPTIONAL OFFICE (AS SHOWN IN MODEL)



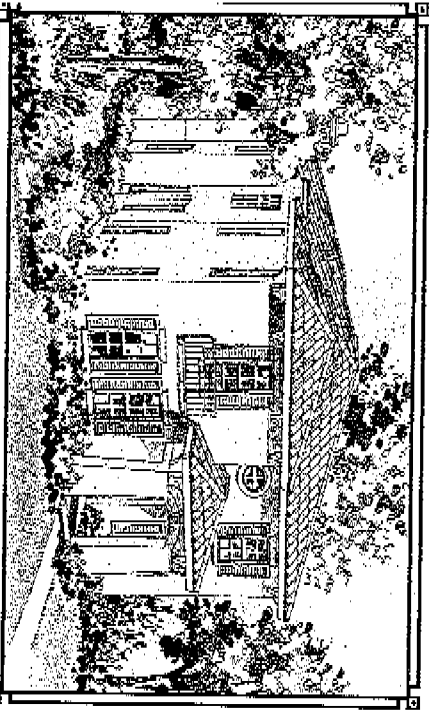
OPTIONAL MASTER RETREAT (Add: 21 sq. ft.) (AS SHOWN IN MODEL)



2AR



SHOWN WITH PORCH 2B

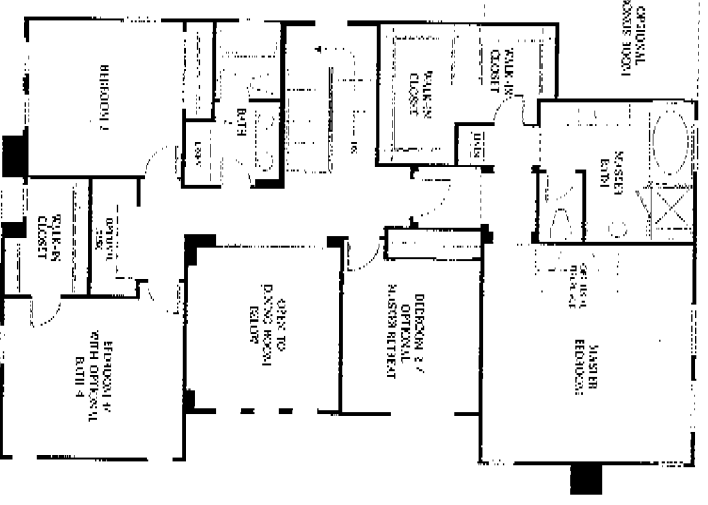
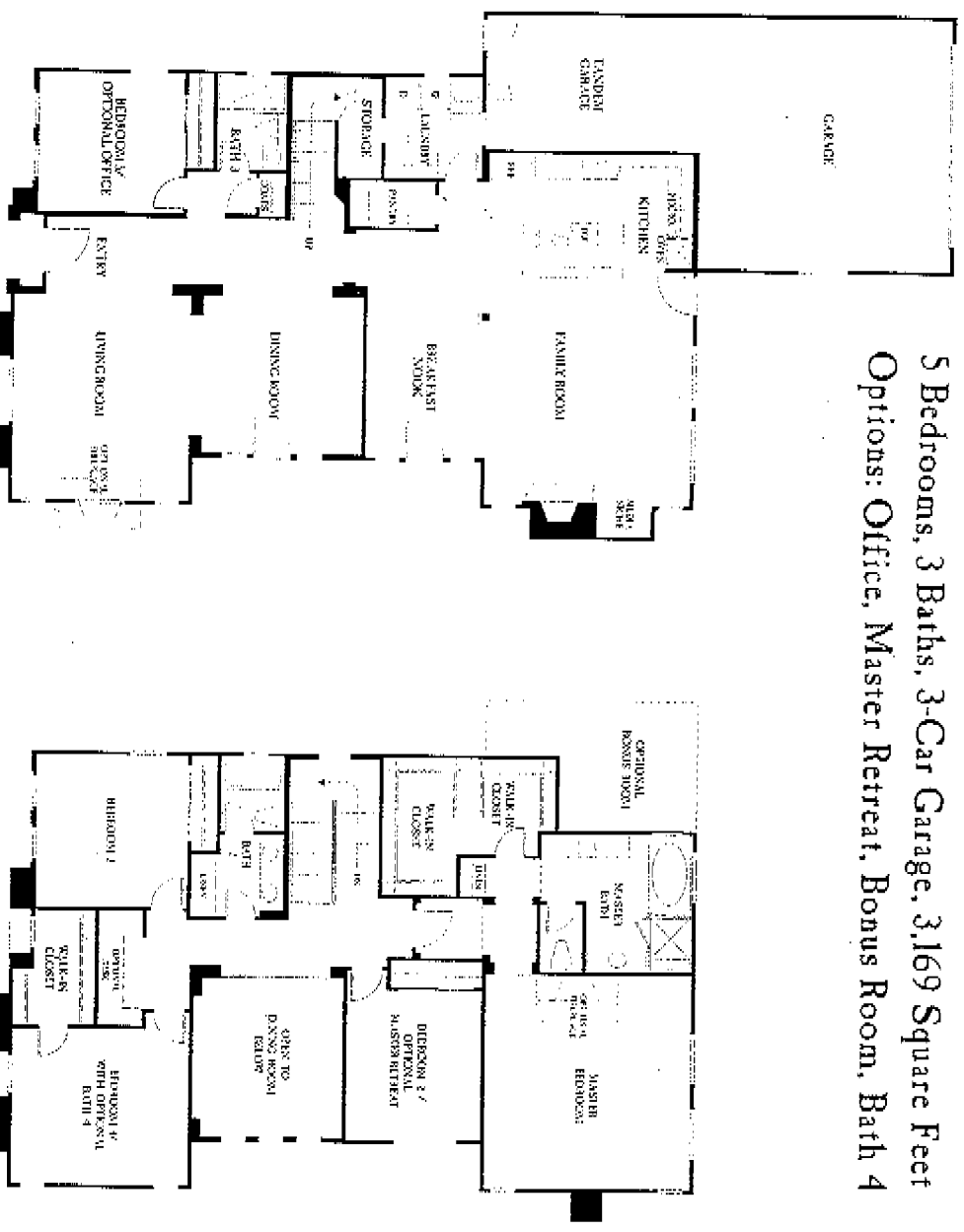


SHOWN WITH PORCH 2CR

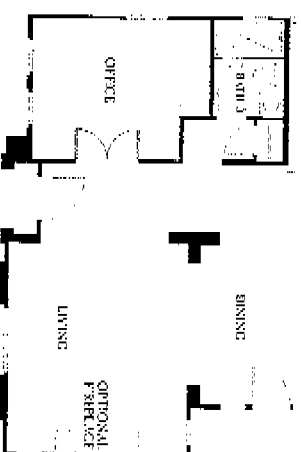
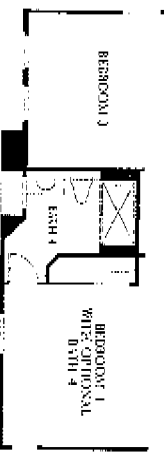
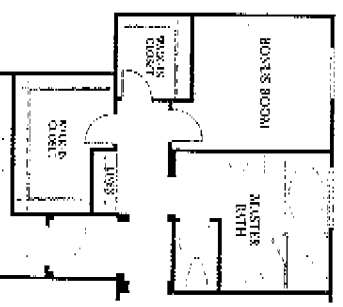
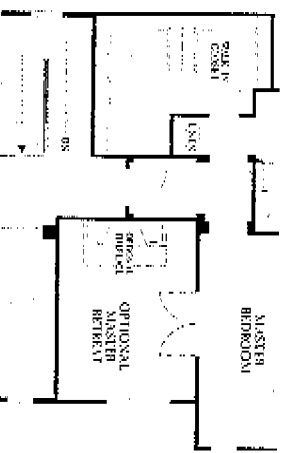
# ANDOVER

PLAN TWO

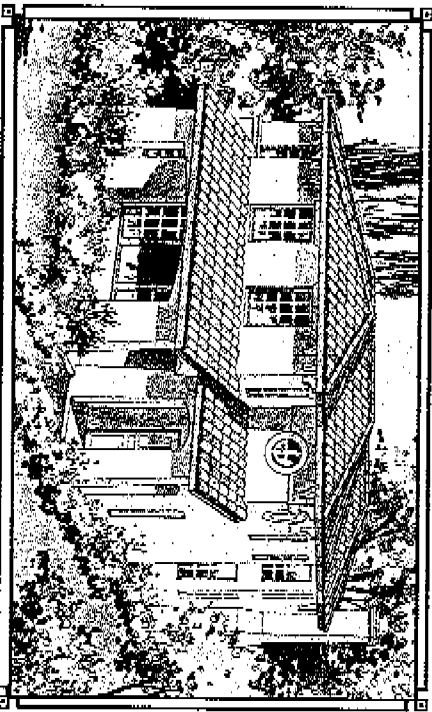
5 Bedrooms, 3 Baths, 3-Car Garage, 3,169 Square Feet  
 Options: Office, Master Retreat, Bonus Room, Bath 4



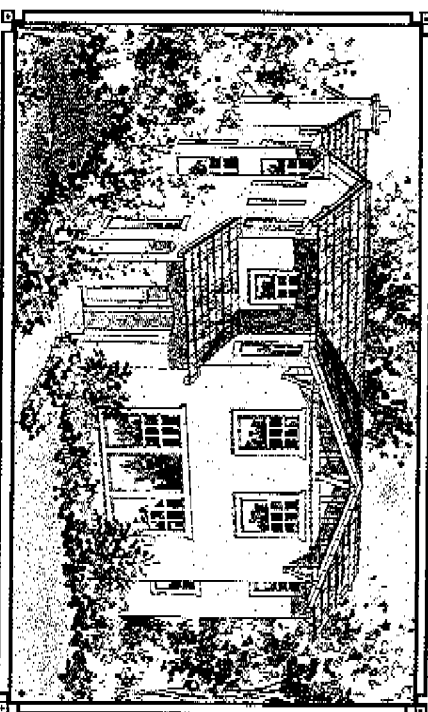
## OPTIONS



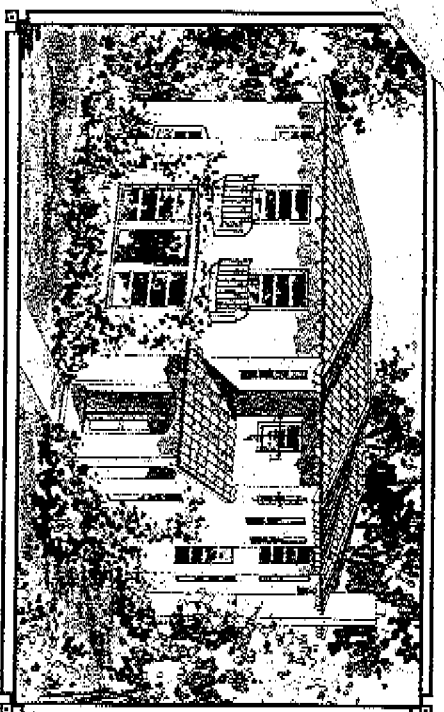
SHOWN WITH PORCH 3C



3BR



3A

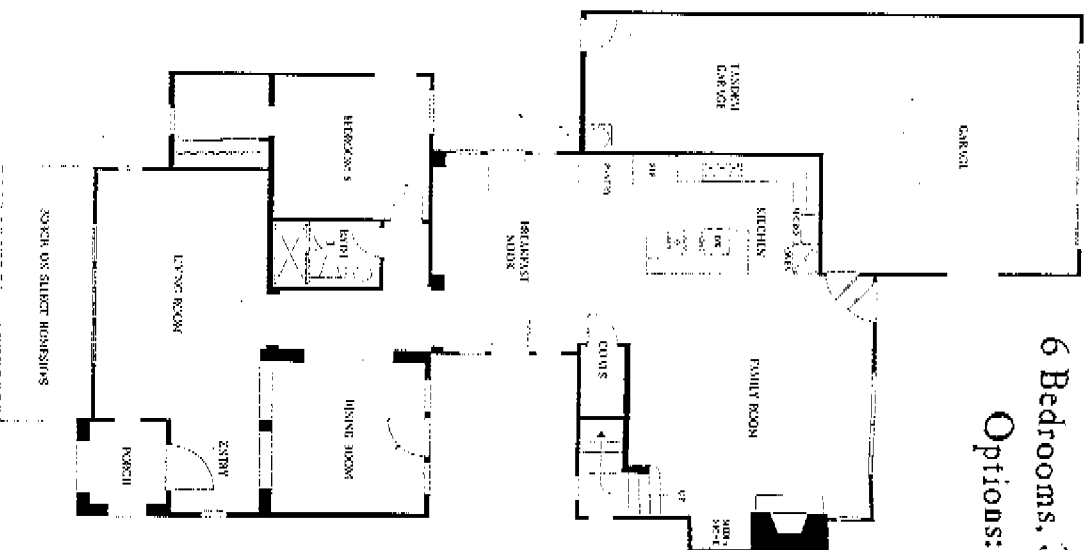


# CAROLINA

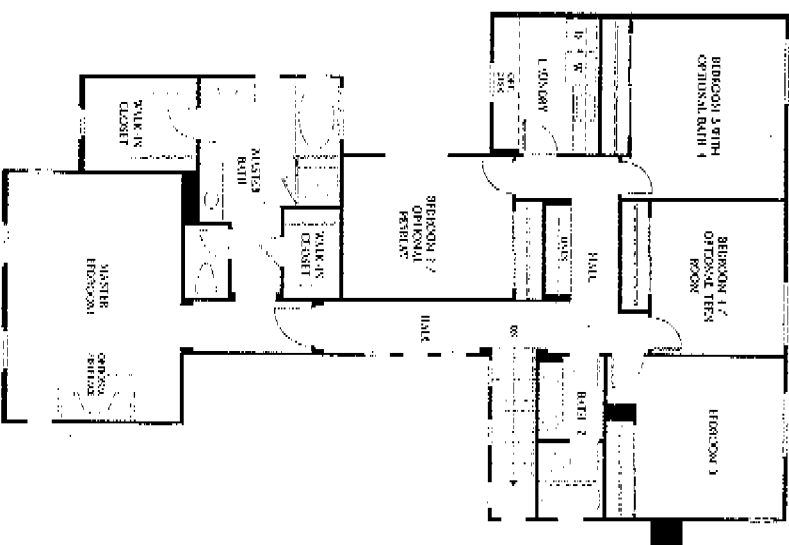
PLAN THREE

6 Bedrooms, 3 Baths, 3-Car Garage, 3,377 Square Feet  
Options: Bath 4, Teen Room, Master Retreat

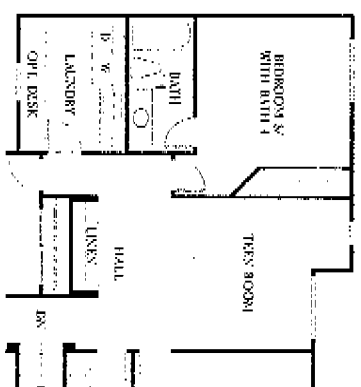
First Floor



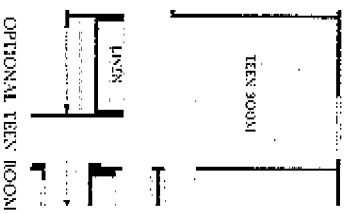
Second Floor



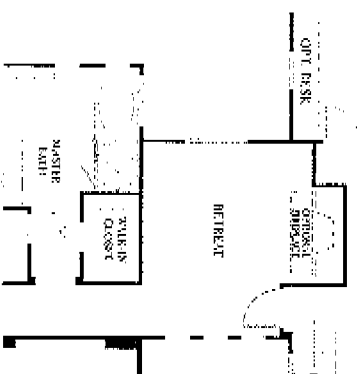
## OPTIONS



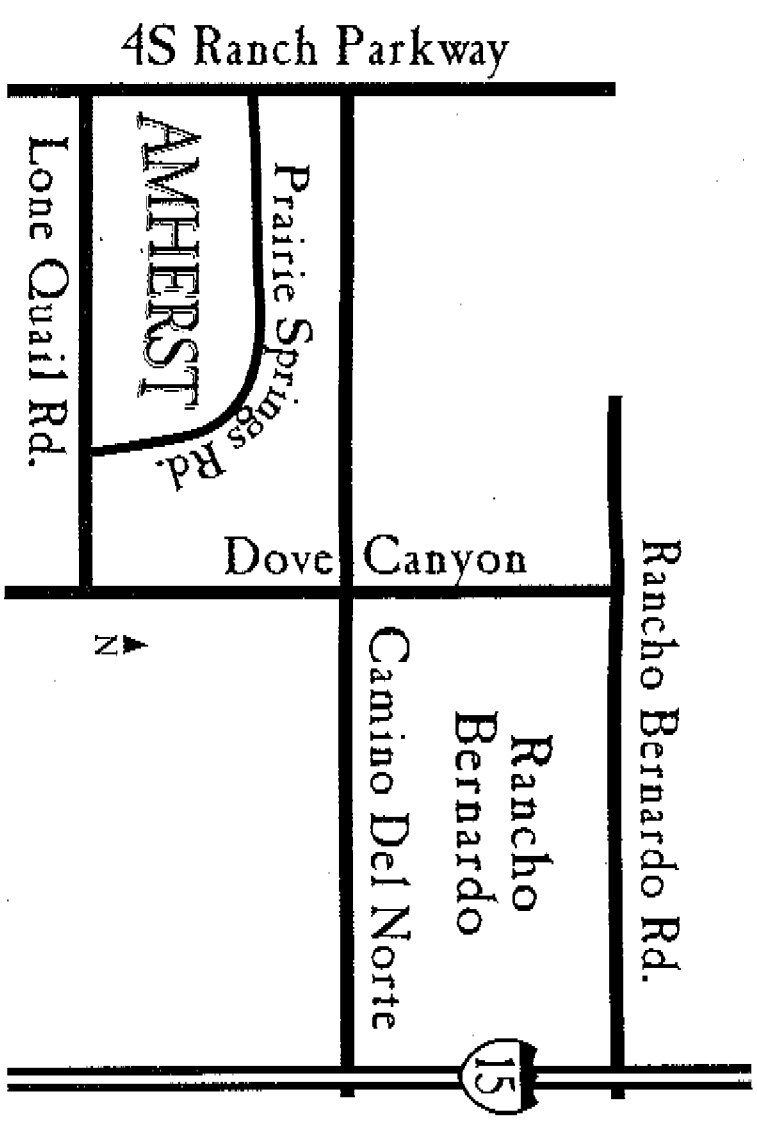
BEDROOM 3 WITH OPTIONAL BATH 4 (Adds 67 sq. ft.) (AS SHOWN IN MODEL)



OPTIONAL TEEN ROOM



OPTIONAL RETREAT



10229 Prairie Springs Road, San Diego CA 92127 • PHONE (858) 312-1011 • FAX (858) 312-1013



**BROOKFIELD**  
HOMES

[www.brookfieldhomes.com](http://www.brookfieldhomes.com)