

Effective 5/18/96

# AUTUMN RIDGE

## Price List

**PLAN 1** From \$268,900 to \$281,900  
**THE AMBERWOOD**

2,406 Square Feet  
3 Bedrooms + Retreat, 2 1/2 Baths  
3-Car Garage

**PLAN 2** From \$319,900 to \$328,900  
**THE OAKLEAF**

3,123 Square Feet  
4 or 5 Bedrooms, 3 Baths  
3-Car Garage

**PLAN 3** From \$330,900 to \$339,900  
**THE PEPPERTREE**

3,326 Square Feet  
4 or 5 Bedrooms, 3 Baths  
3-Car Garage

With Optional Bonus Room From \$348,900  
3,566 Square Feet

**PLAN 4** From \$345,900 to \$352,900  
**THE STONERIDGE**

3,519 Square Feet  
4 Bedrooms + Bonus Room, 3 Baths  
3-Car Garage

*Subsequent sales may result in unavailability of some or all of the above.  
Prices subject to change without notice or obligation to prospective buyer.*

**Sales Office: (619)693-0893**  
**Brigitte Davidian and Dave Henderson**

Effective 5/18/96

# AUTUMN RIDGE

## Price List

**PLAN 1** From \$268,900 to \$281,900

**THE AMBERWOOD**

2,406 Square Feet

3 Bedrooms + Retreat, 2 1/2 Baths

3-Car Garage

**PLAN 2** From \$319,900 to \$328,900

**THE OAKLEAF**

3,123 Square Feet

4 or 5 Bedrooms, 3 Baths

3-Car Garage

**PLAN 3** From \$330,900 to \$339,900

**THE PEPPERTREE**

3,326 Square Feet

4 or 5 Bedrooms, 3 Baths

3-Car Garage

With Optional Bonus Room From \$348,900

3,566 Square Feet

**PLAN 4** From \$345,900 to \$352,900

**THE STONERIDGE**

3,519 Square Feet

4 Bedrooms + Bonus Room, 3 Baths

3-Car Garage

*Subsequent sales may result in unavailability of some or all of the above.  
Prices subject to change without notice or obligation to prospective buyer.*

**Sales Office: (619)693-0893**

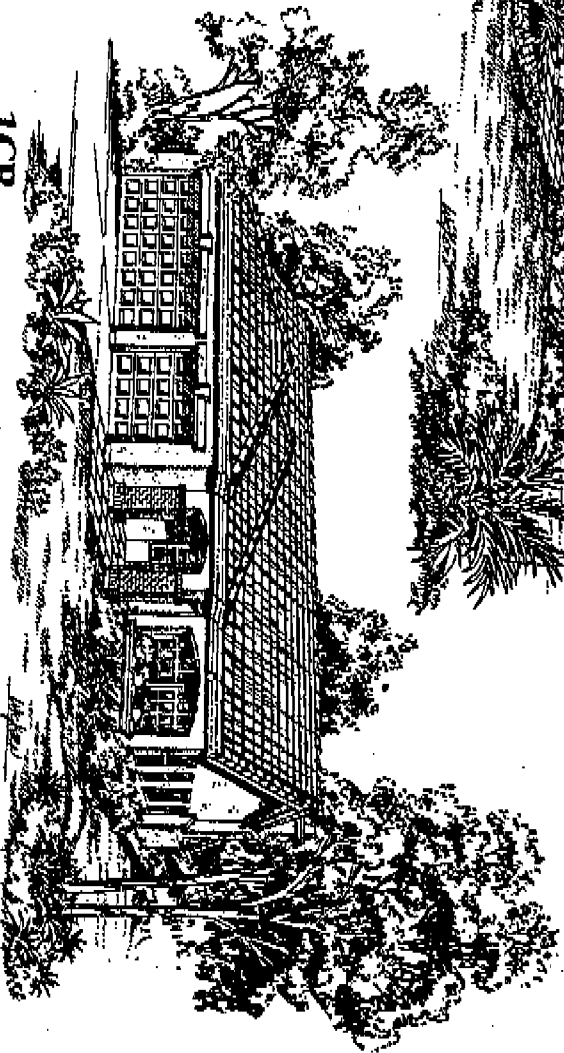
**Brigitte Davidian and Dave Henderson**

# AUTUMN BRIDGE

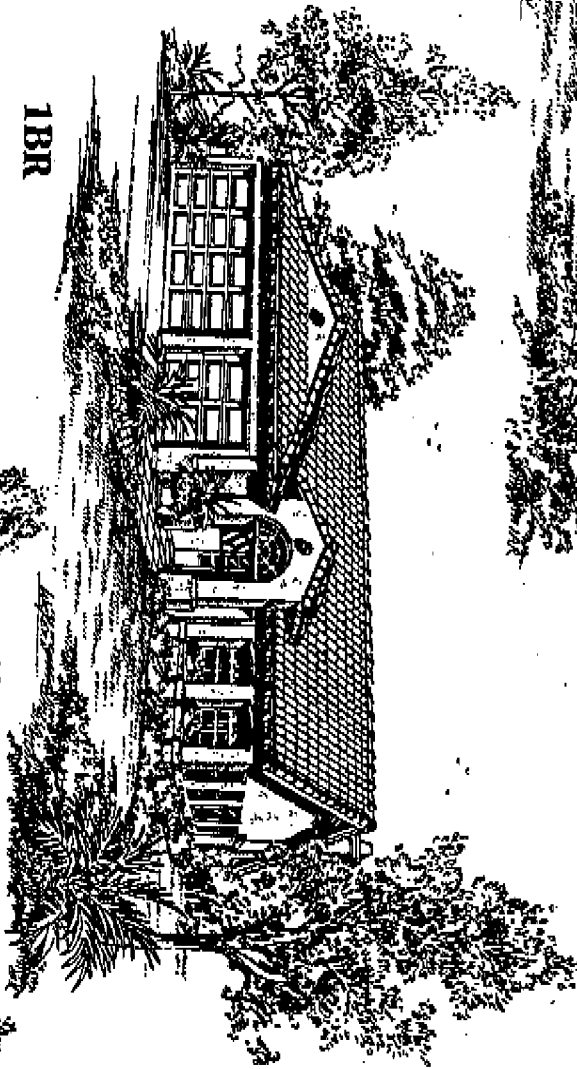
AT SCRIPPS RANCH VILLAGES



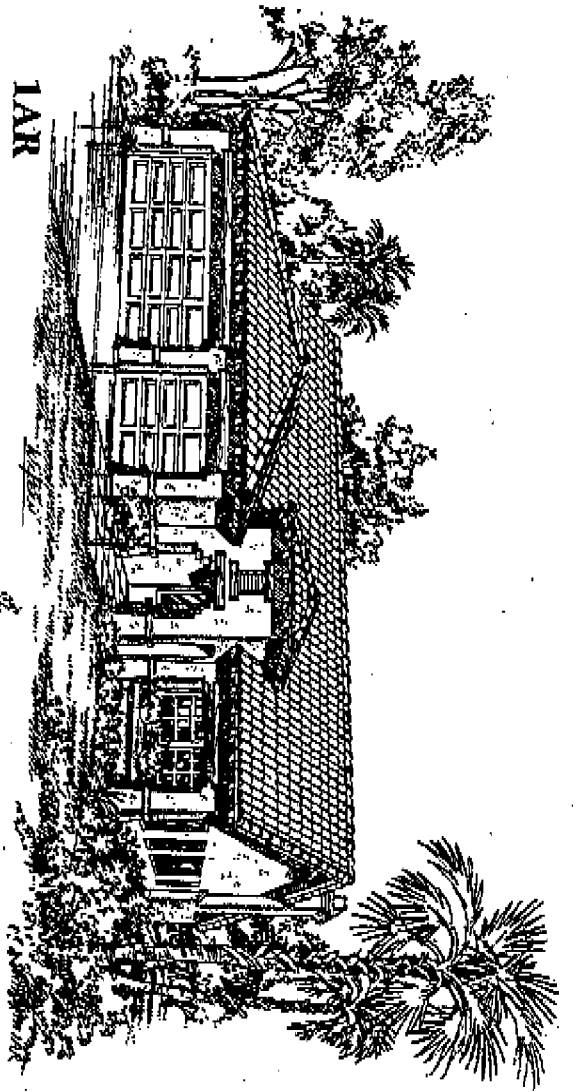
1CR

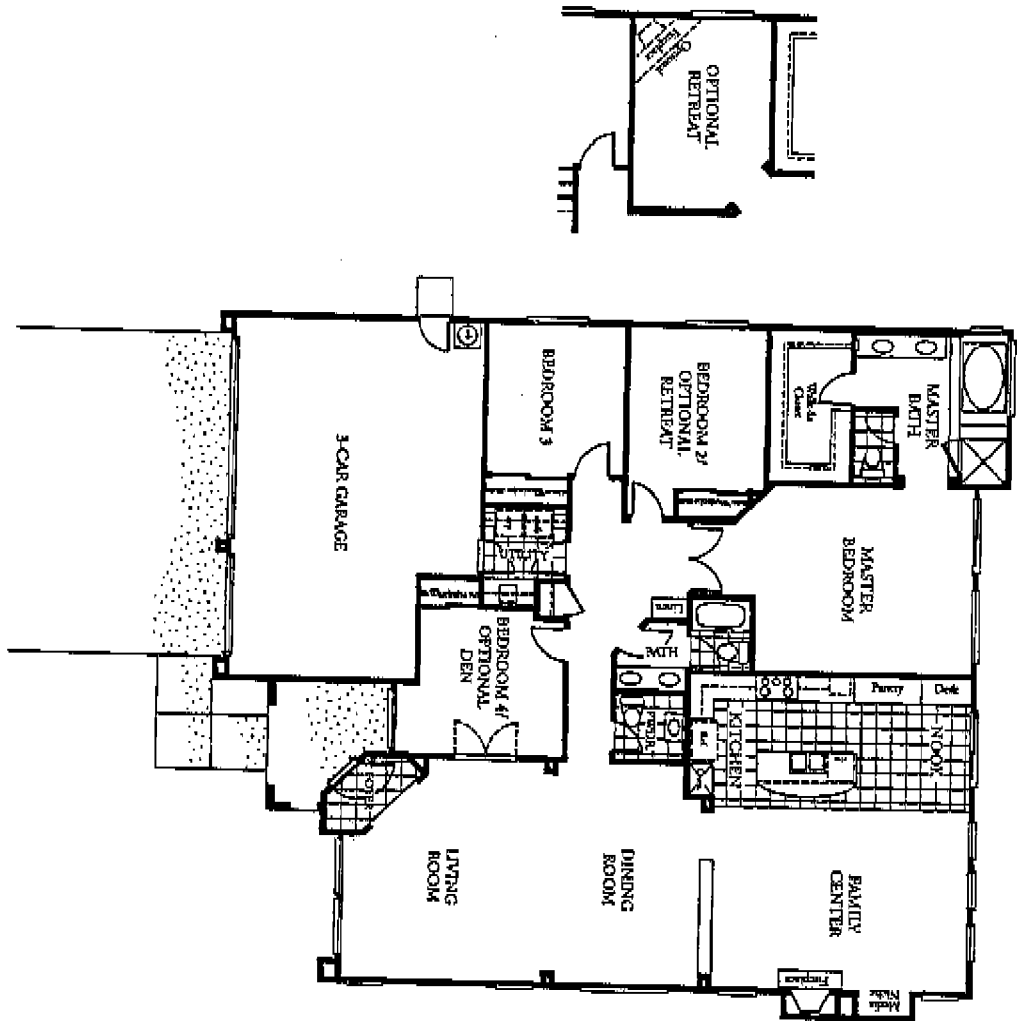


1BR



1AR

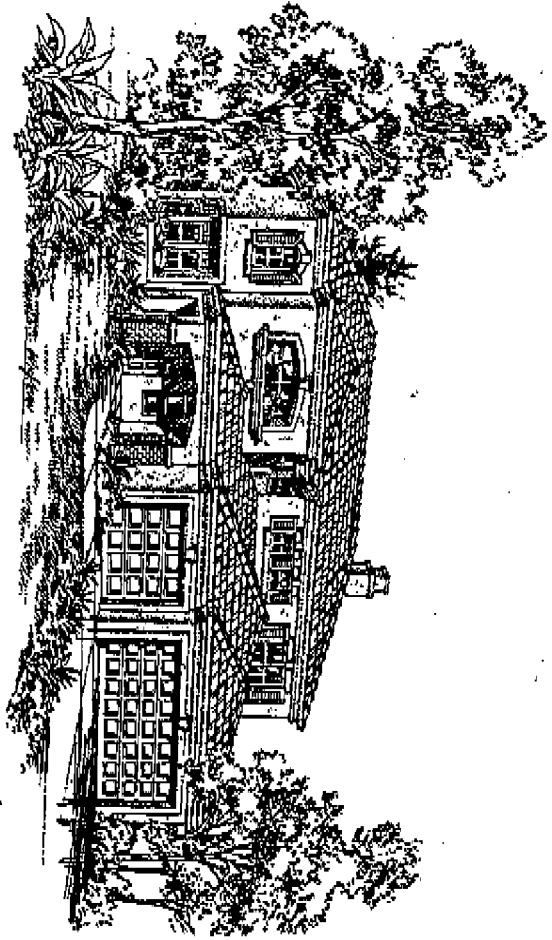




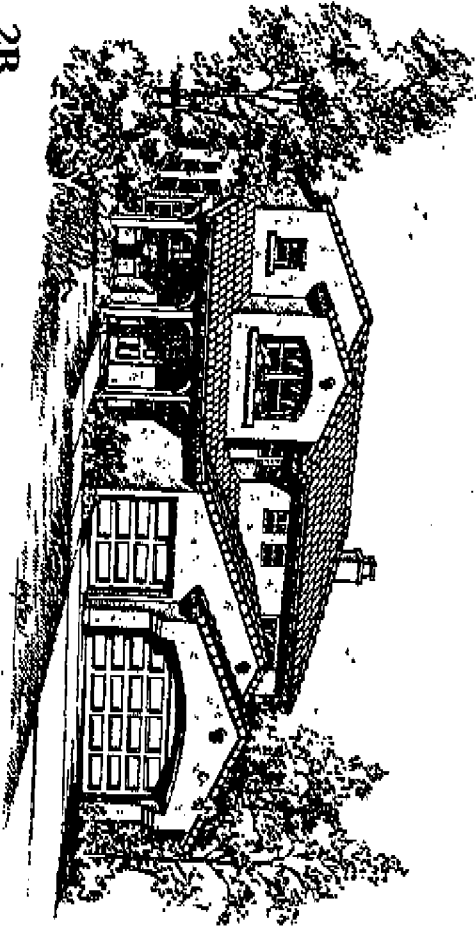
Plan 1

**THE AMBERWOOD**

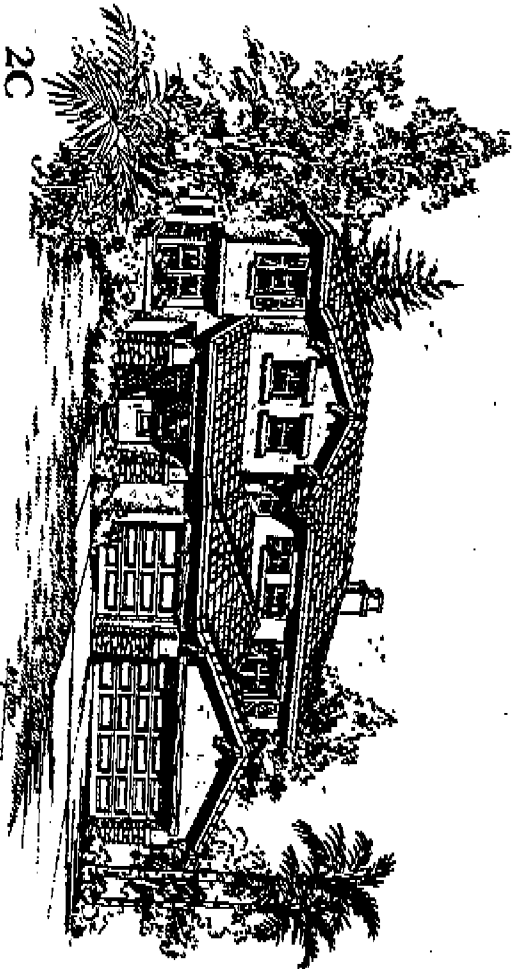
4 Bedrooms, 2 1/2 Baths, 2,406 Square Feet



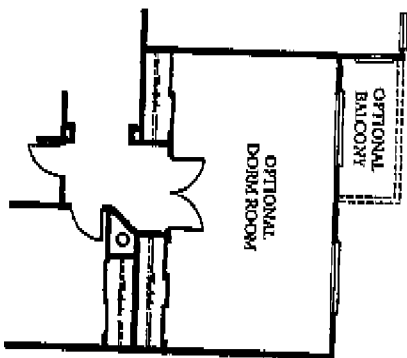
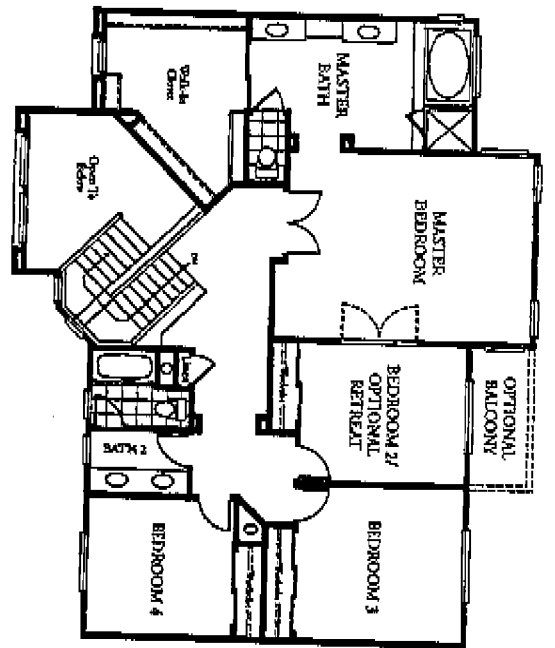
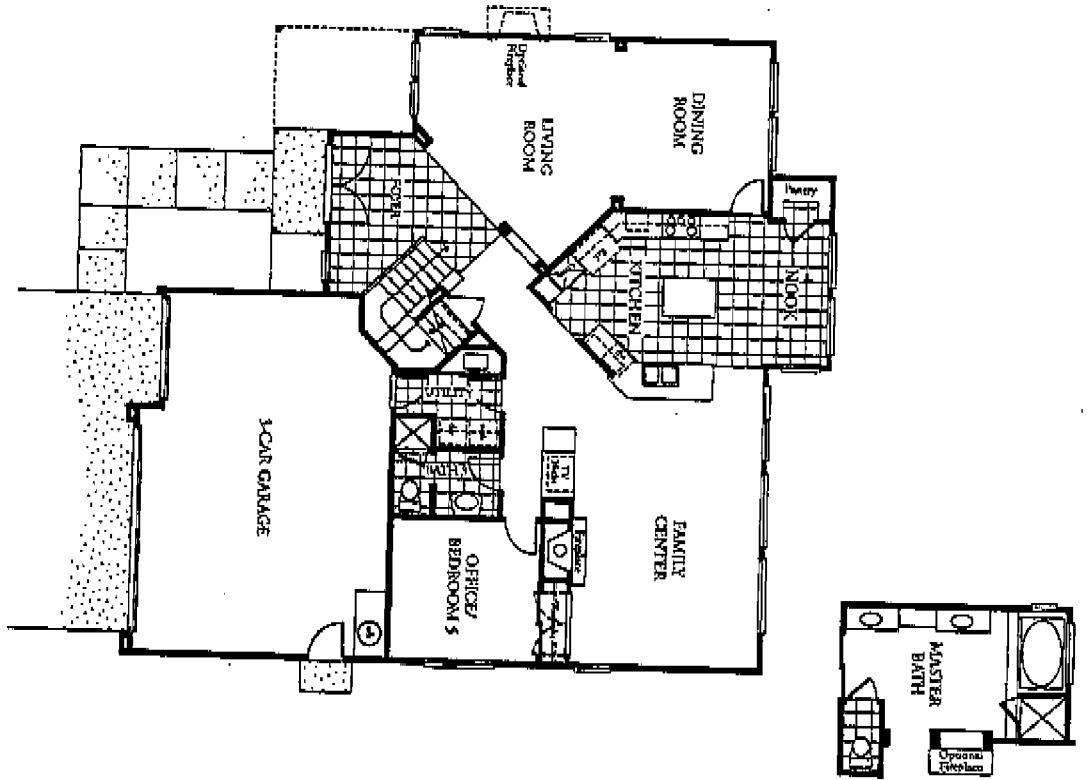
2A



2B



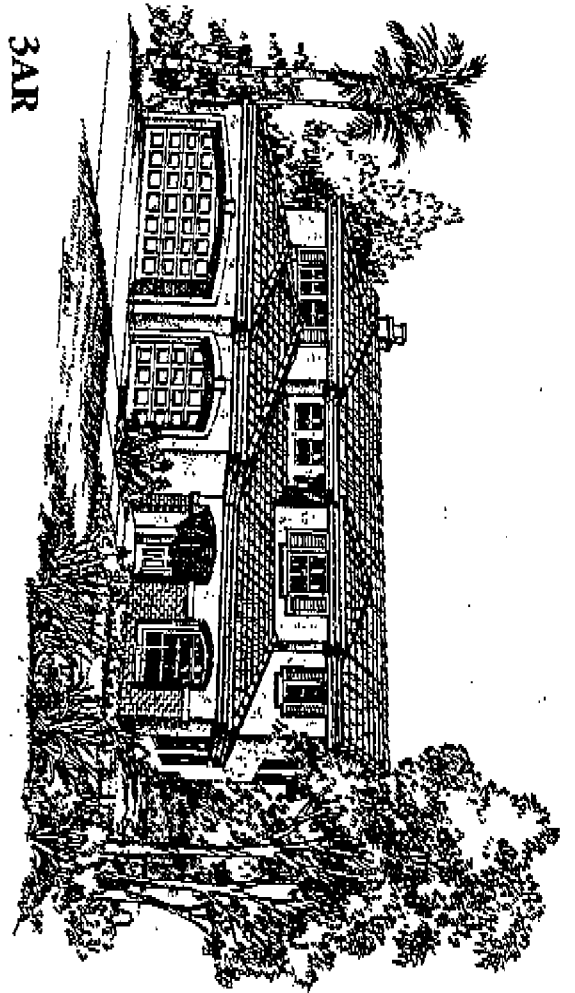
2C



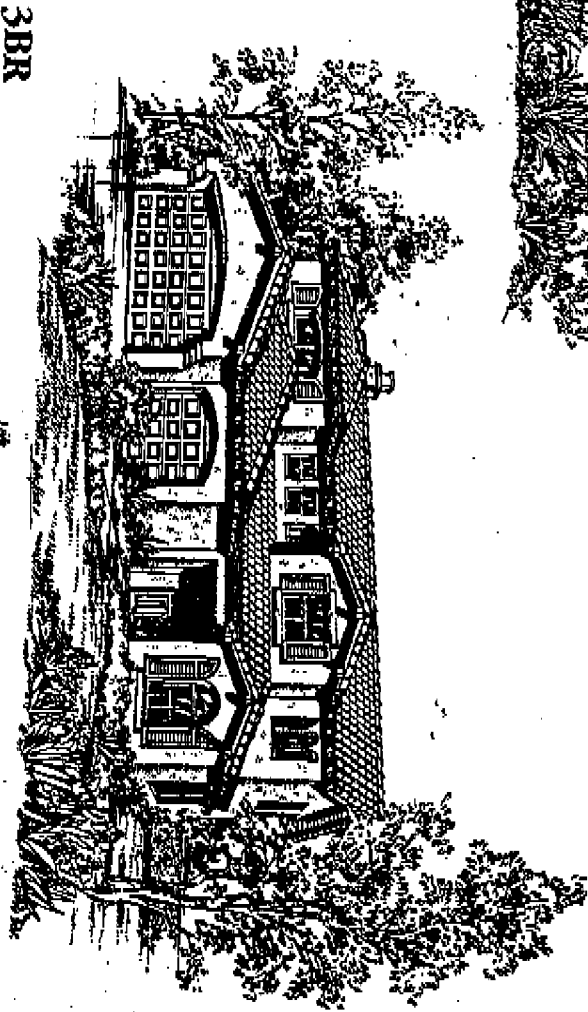
# THE OAKLEAF

Plan 2

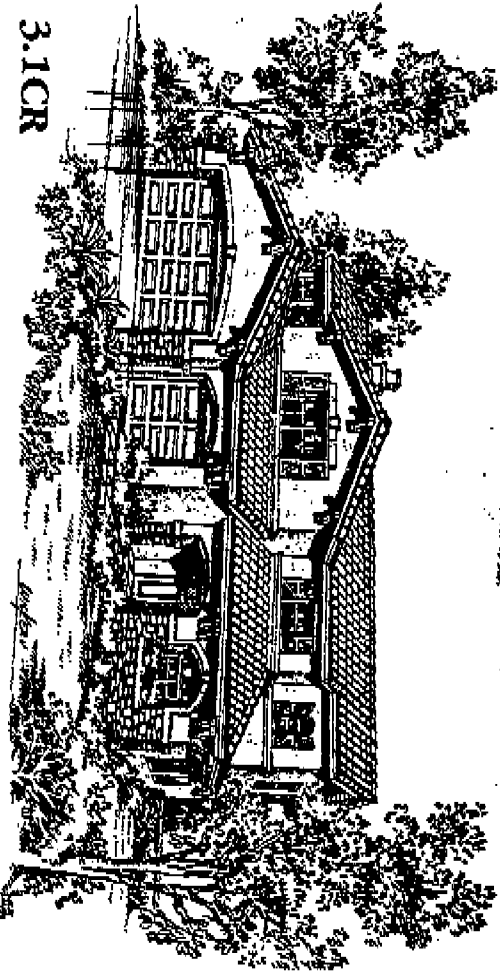
4 or 5 Bedrooms, 3 Baths, 3,123 Square Feet



3AR

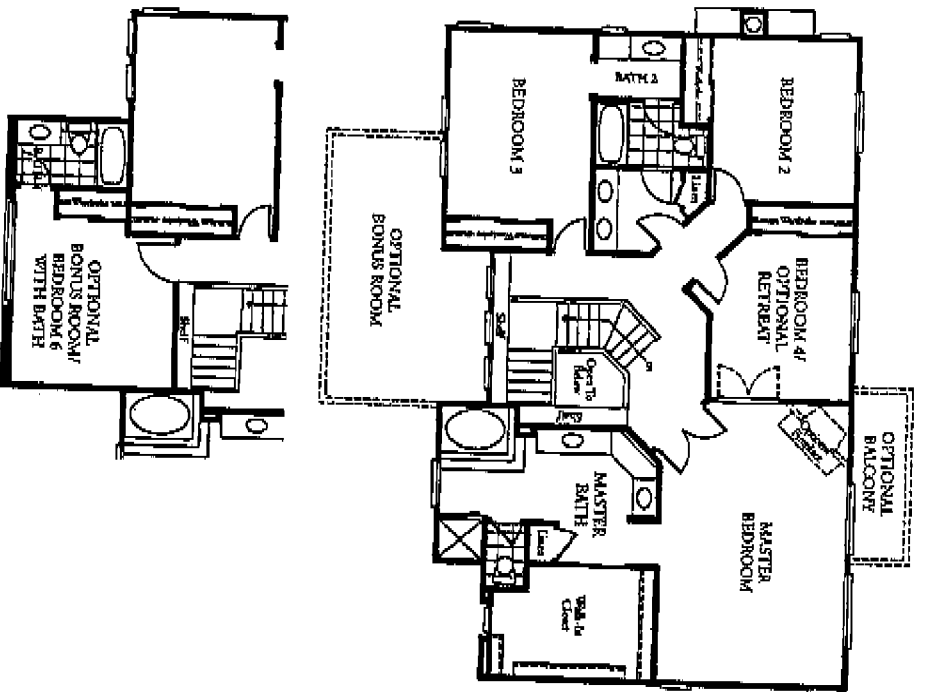
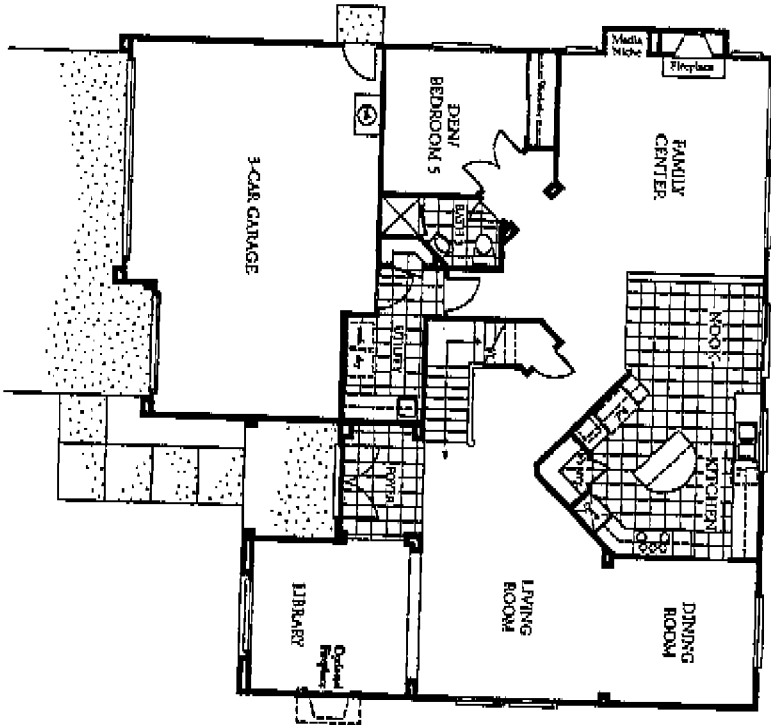


3BR



3.1CR



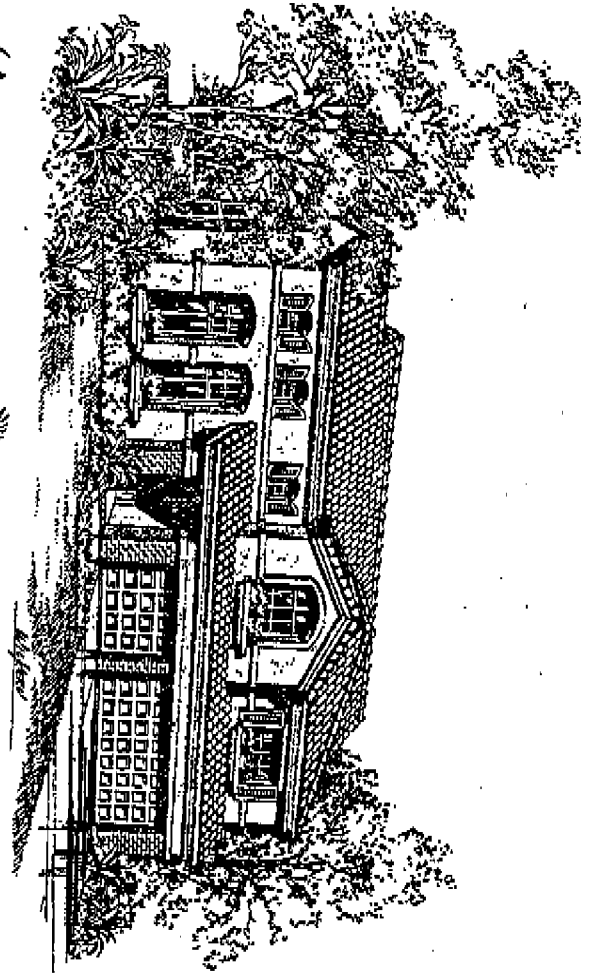


Plan 3

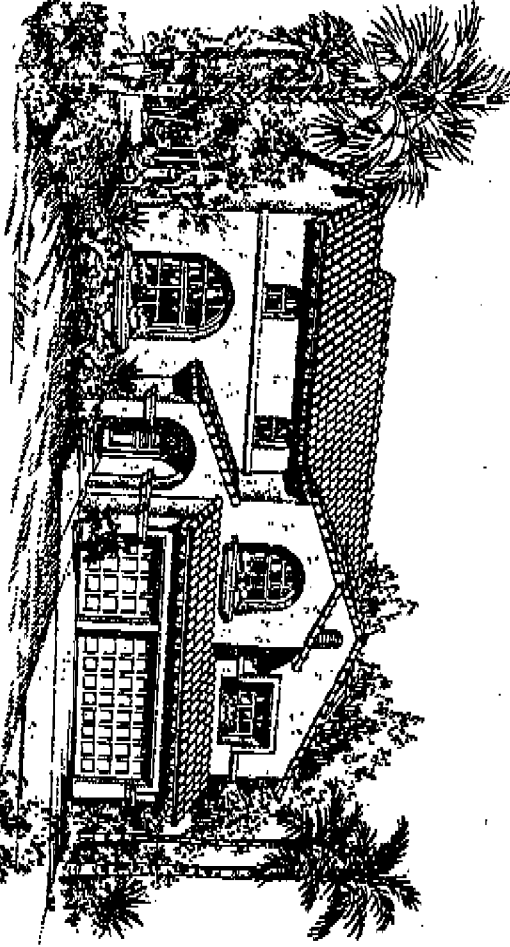
### THE PEPPERTREE

4 or 5 Bedrooms, 3 Baths • Optional Bonus Room/Bedroom/Bedroom 6 Plus Bath  
 3,326 Square Feet • 3,566 Square Feet With Bonus Room

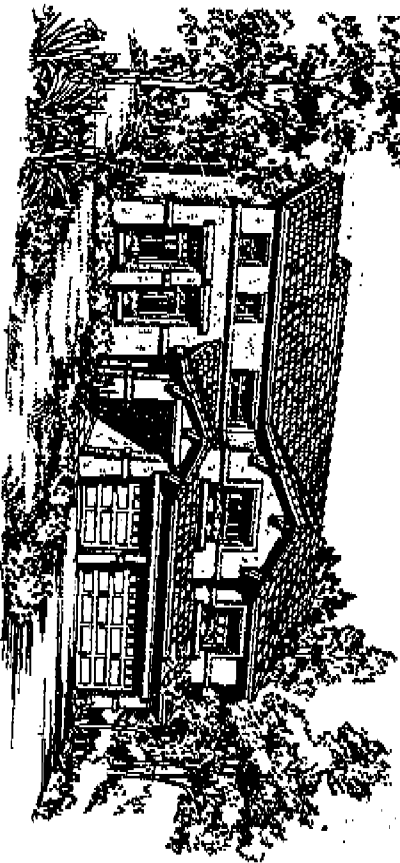
4A

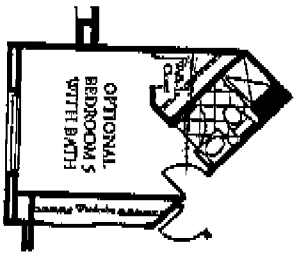
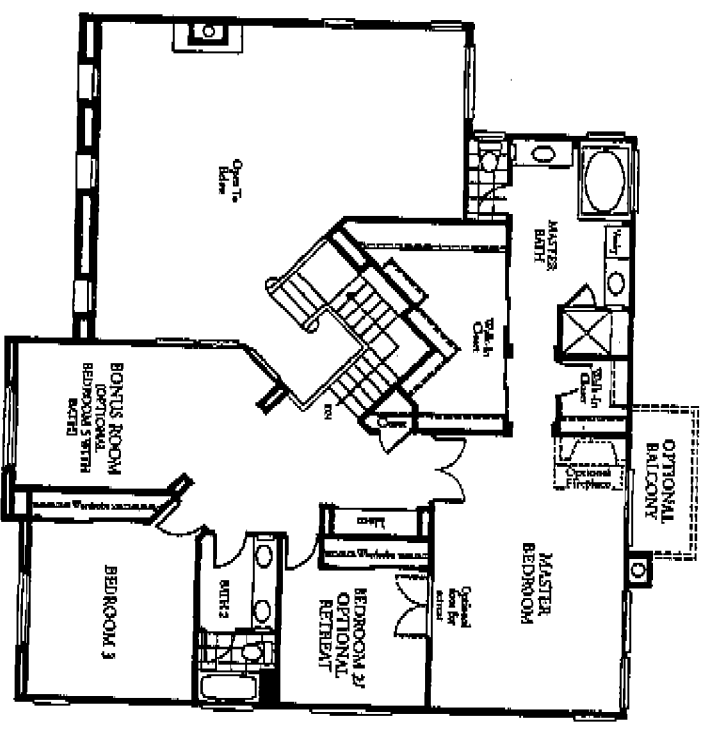
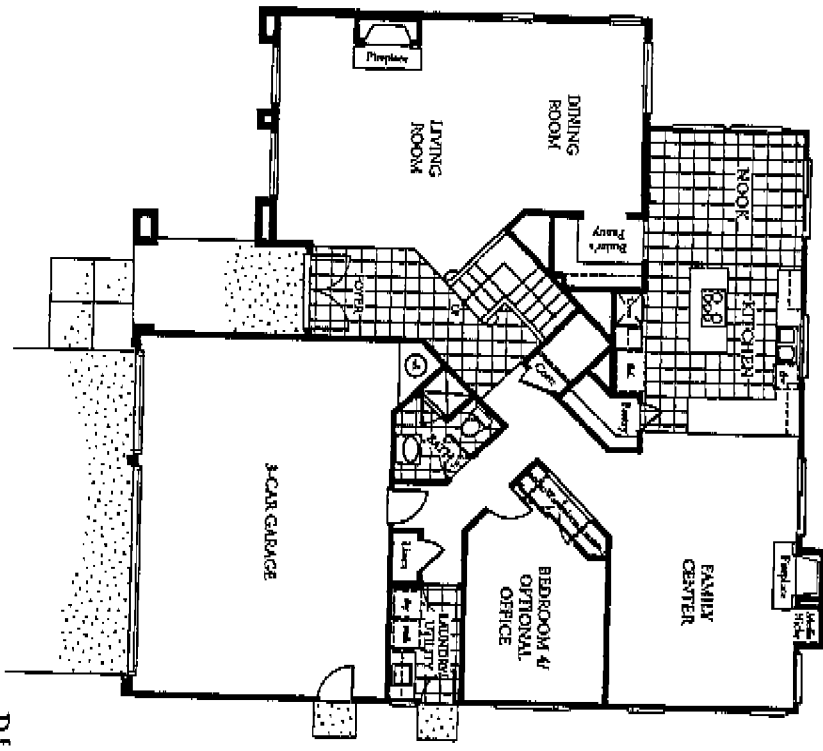
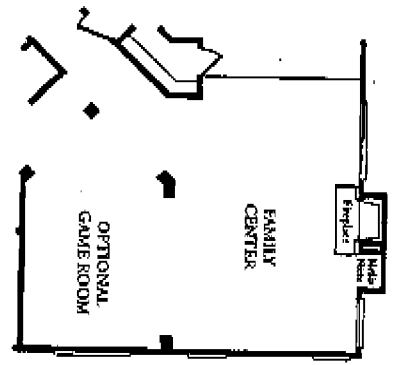


4B



4C





Plan 4

# THE STONERIDGE

4 Bedrooms Plus Bonus Room, 3 Baths • Optional Bedroom 5 Plus Bath  
 3,519 Square Feet

# Features

## Exteriors

- Variety of exterior architectural styles including Regency, Craftsman, and Santa Barbara
- Pull-yard fencing
- Dramatic 8' double door entries with security dead bolts
- Color coordinated flatter S-tile fire resistant concrete roofing
- Three-car garages
- Roll-up garage doors in white or almond
- Hand-rubbed bronze exterior door hardware
- Decorative exterior lighting
- Gas stub for BBQ and electrical outlet in rear yard
- Decorative front lighting

## Elegant Interior Details

- Custom ceramic tile entries
- Voluminous ceilings
- Bullnose corners
- Colonial interior doors throughout with elegant hardware
- Generous linen closets and storage areas
- Wood-burning fireplaces with custom hearths and mantels
- Entertainment niches
- Staircase with solid oak handrails, newel posts and turned ends
- Plush carpeting throughout living areas
- Easy-care vinyl flooring in laundry and secondary baths
- Designer-selected light fixtures
- Interior laundry areas with sink and storage cabinets
- Pre-wired for cable TV and telephone in all bedrooms and family room
- Smoke detectors in all bedrooms

## Gourmet Kitchens

- Quality European-style cabinetry in a variety of finishes
- Gourmet islands in most plans
- Porcelanosa 8" ceramic tile countertops in white or ivory
- GE appliances including:
  - self-cleaning double oven in black or white
  - Profile 5 burner gas cooktop in black or white
  - Profile electronic dishwasher in black or white
  - microwave in black or white
- Price Pfister faucet with pull-out spray spout
- Recessed lighting
- Spacious pantries
- Sound insulated heavy-duty garbage disposal
- Plumbed for automatic ice-maker
- Cast iron two compartment porcelain sink

## Master Suites

- Spacious 8' colonist double-door entries
- Expansive walk-in closets
- Top quality European-style cabinetry in a variety of finishes
- Mirrored wardrobe doors (most plans)
- Separate oval tub and shower with glass enclosure
- Porcelanosa ceramic tile countertops, shower and tub surrounds
- Double china basins with Price Pfister widespread fixtures
- Large vanity mirrors
- Recessed lighting
- Sculpted wall detailing

## Secondary Baths

- Ceramic tile vanity tops with china lavs
- Price Pfister plumbing fixtures
- Enamel bathtub or shower with ceramic tile surrounds

## Energy Saving Features

- Dual-glazed vinyl windows throughout
- Central forced air heating and air conditioning units with set-back thermostat
- 50-gallon energy-efficient gas water heater
- Water-saving plumbing fixtures
- Flow guard gold piping

## Options to Customize Your Home

- Marble, corian or granite countertops in a selection of designer colors in kitchen and baths
- Additional cabinetry options in a variety of styles and colors
- Glass doors on upper kitchen cabinets
- Fireplace in all master bedrooms and living rooms
- Mahogany entry door
- Balcony off master bedroom (Plans 2, 3 & 4)
- Privacy doors to master bath
- Security system
- Water filtration system
- Custom closet designs
- Instant hot water supply
- Ceiling fans
- Designer glass panels for garage door
- Rain-gutter package