



Belle Fleur

*A breathtaking
hilltop neighborhood
in Sabre Springs
by Pardee Homes*

Belle Fleur

12299 Oakview Way, San Diego, California 92128
Tel: (619) 549-5280 Fax: (619) 621-5895

PLAN 1

five bedrooms/3.5 baths
three car garage
Approximately 3069 square feet

from: **\$431,100**

Temporarily Sold Out

PLAN 2C/D *(Last one currently available!)*

five bedrooms + bonus or study,
four baths/three car garage
Approximately 3483 square feet

from: **\$499,900**

PLAN 3B/C

five bedrooms + bonus, 4.5 baths
four car garage
Approximately 3983 square feet

from: **\$546,100**

Temporarily Sold Out

Prices, terms and availability are subject to change without notice.
Decorator items are not available through the builder
(Prices effective July 23, 1998)

~ Sales Representatives ~

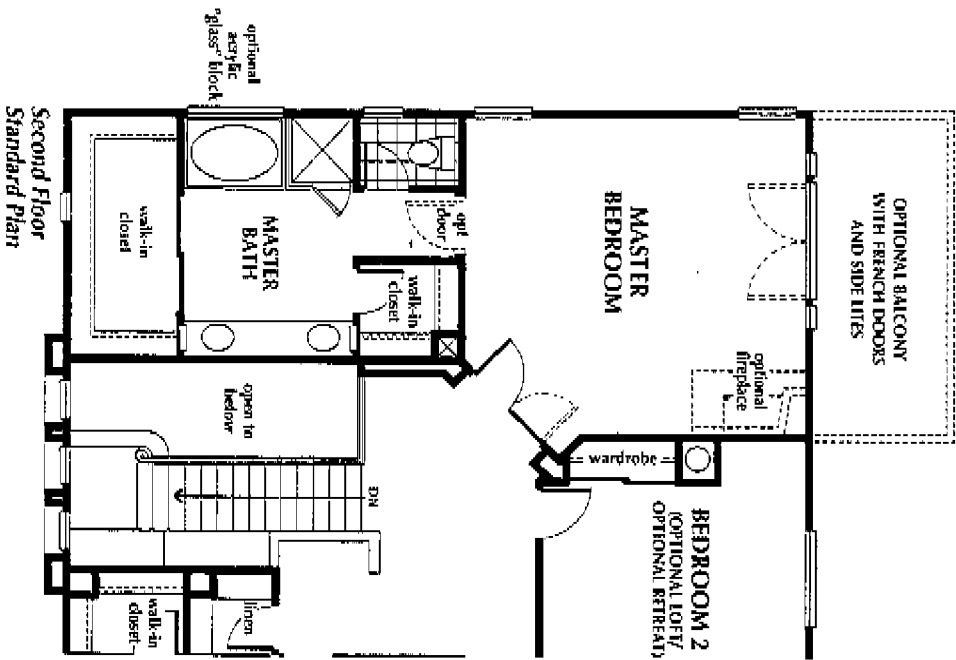
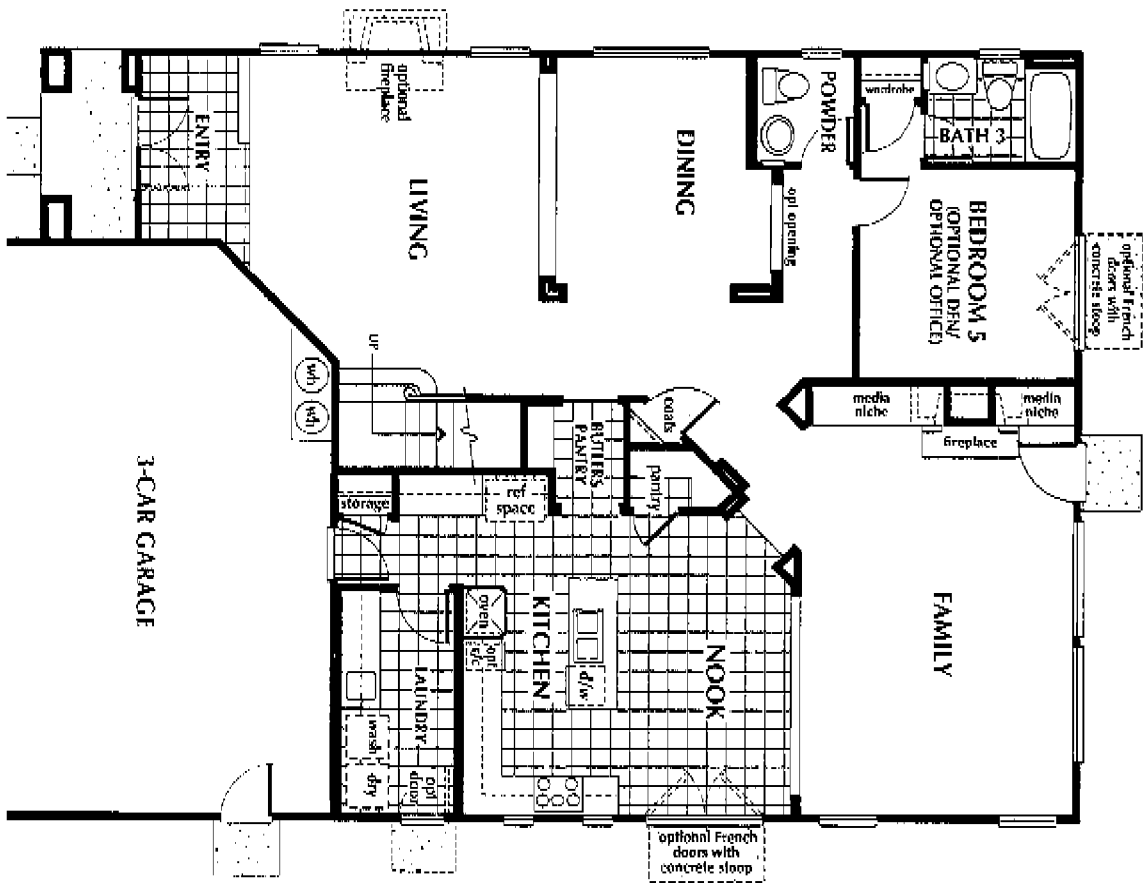
Ricki Fein & Trisha Humphrey

Pardee Homes
PARDEE CONSTRUCTION COMPANY



Plan 1

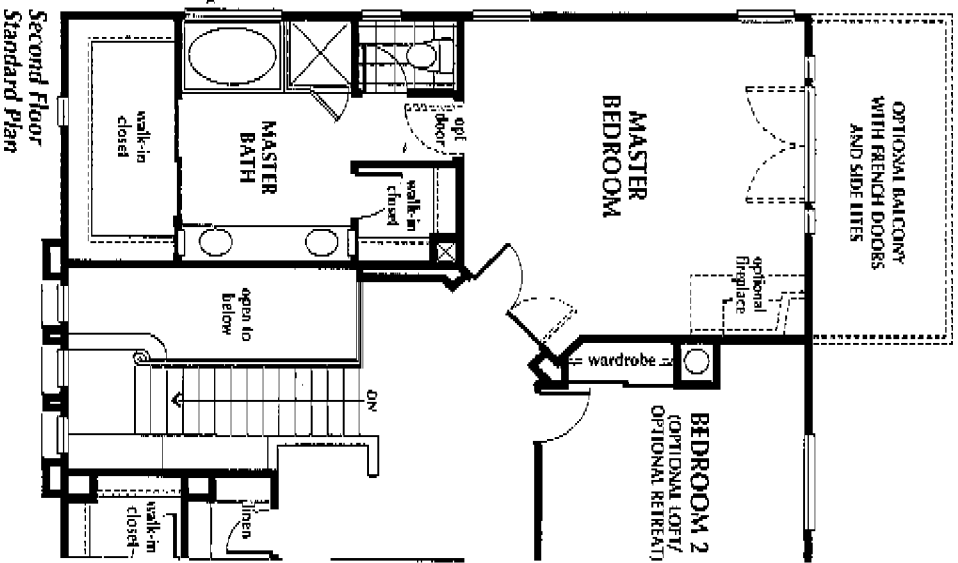
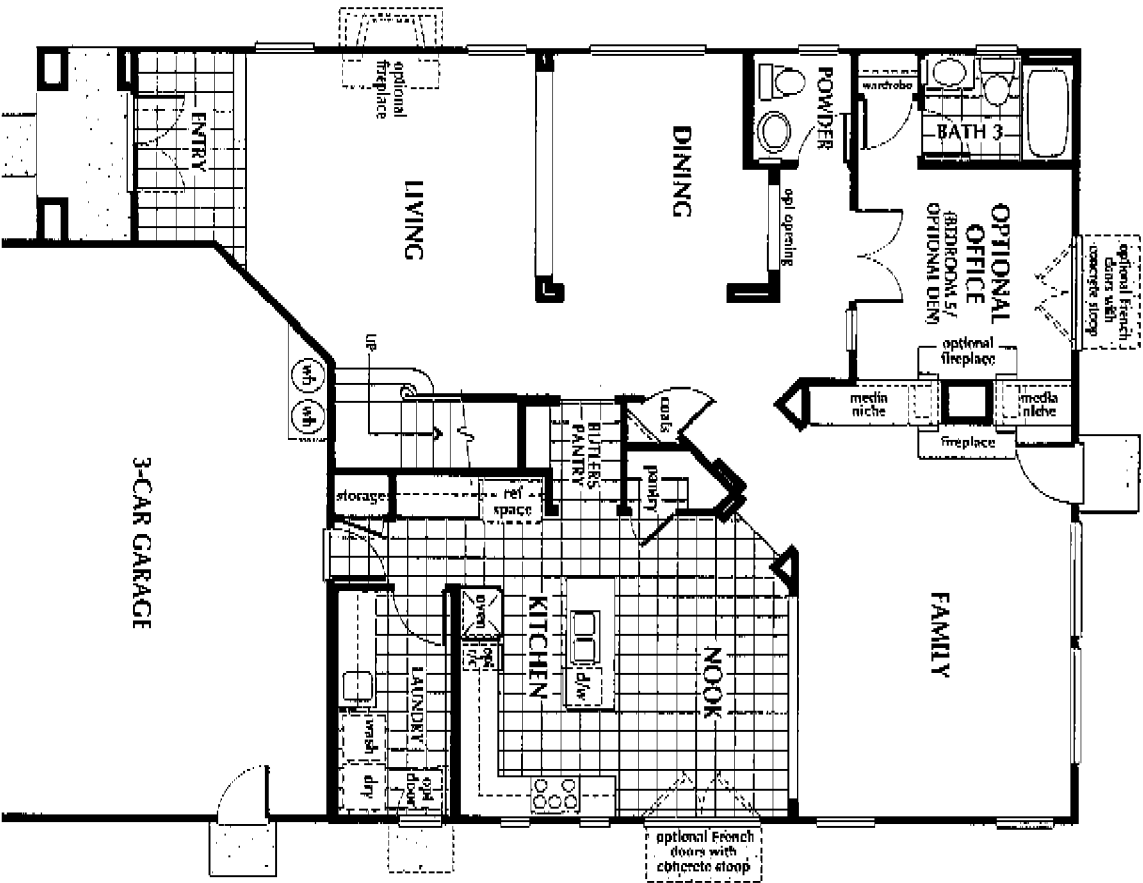
Standard: 5 Bedrooms \approx 3 1/2 Baths \approx 3-Car Garage \approx Approximately 3,069 Sq. Ft.



Second Floor Standard Plan

Plan 1

Model — Plan 1A: 5 Bedrooms (Optional Office shown) 3 1/2 Baths 3-Car Garage Approximately 3,069 Sq.



Second Floor Standard Plan

Plan 2

Standard: Elevation B see 5 Bedrooms see 4 Baths see 3-Car Garage see Approximately 3,289 Sq. Ft.

Standard: Elevations C and D see 5 Bedrooms and Study see 4 Baths see 3-Car Garage see Approximately 3,483 Sq. Ft.



Plan 2

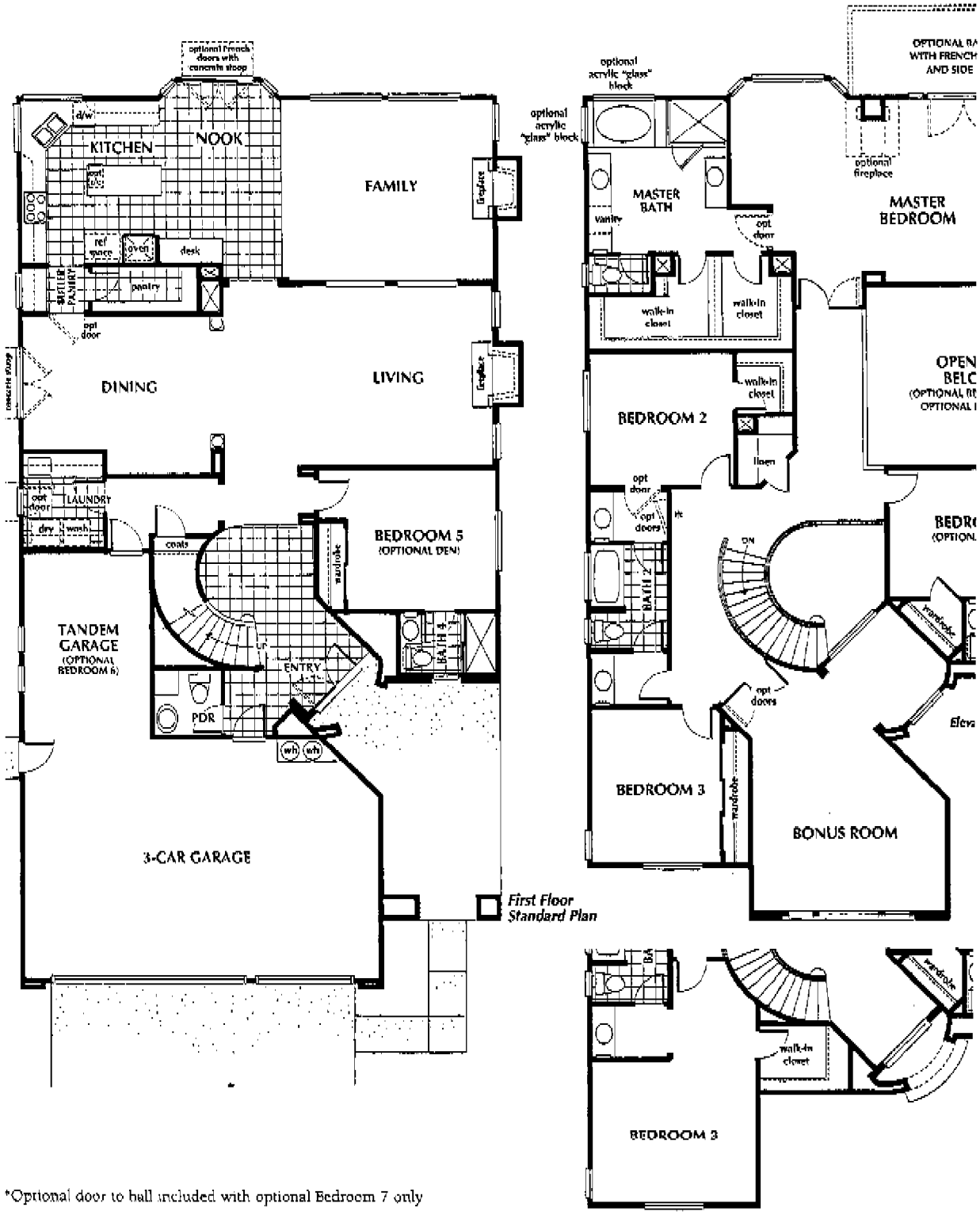
Model — Plan 2C: 5 Bedrooms and Study (Optional Den shown) see 4 Baths see 3-Car Garage see Approximately 3,483



Plan 3

Standard: Elevation A 5 Bedrooms 4 1/2 Baths 4-Car Tandem Garage Approximately 3,671 Sq. Ft

Standard: Elevations B and C 5 Bedrooms and Bonus Room 4 1/2 Baths 4-Car Tandem Garage Approximately 3,983 Sq. Ft

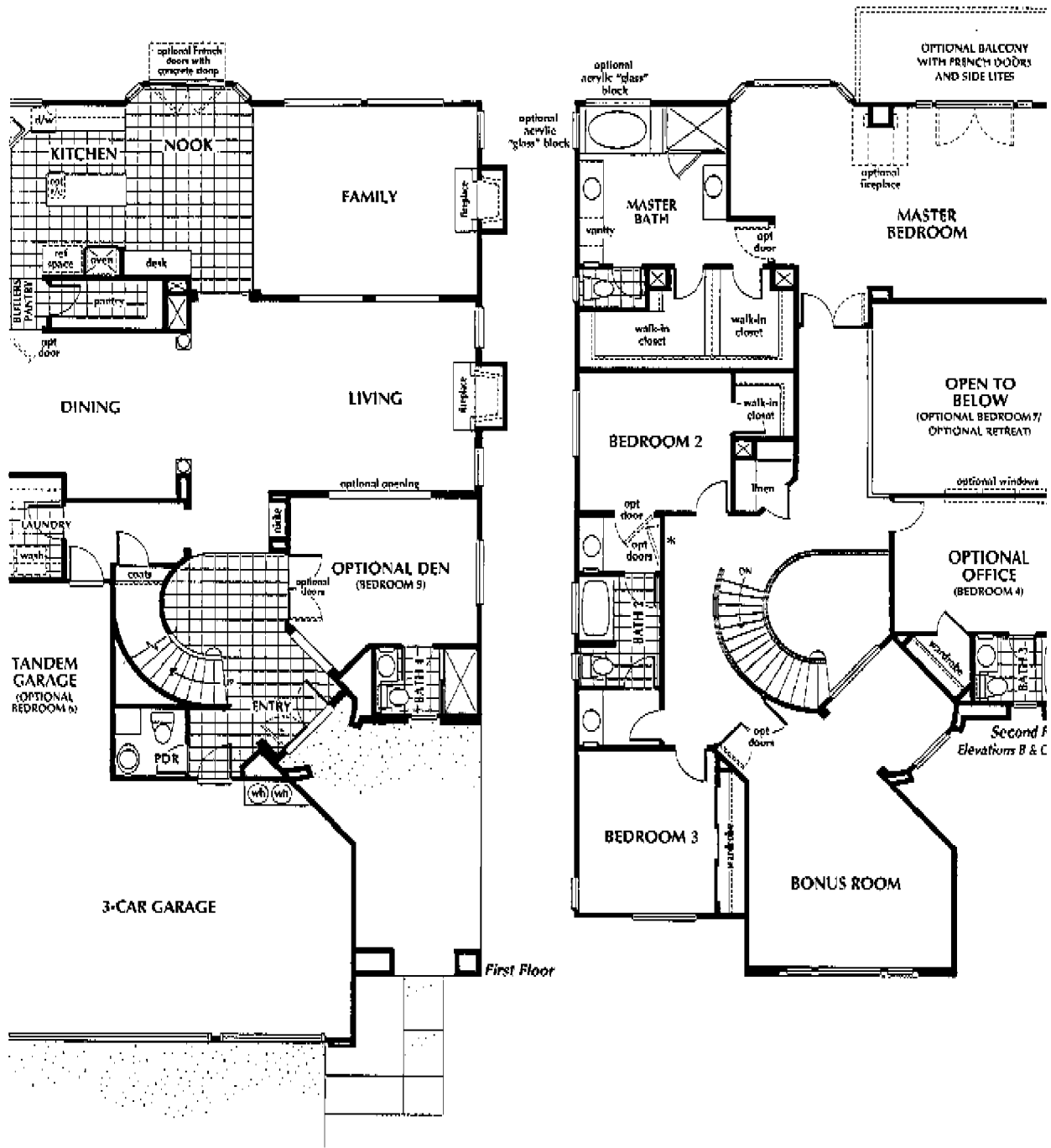


First Floor Standard Plan

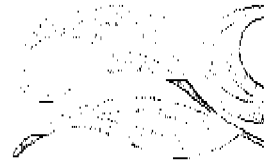
*Optional door to hall included with optional Bedroom 7 only

Plan 3

Model — Plan 3BR: 5 Bedrooms and Bonus Room (Optional Den and Office shown) 4 1/2 Baths 4-Car Tandem Garage
Approximately 3,983 Sq. Ft. (Available with up to 7 Bedrooms, 5 Baths, approximately 4,402 Sq. Ft.)



al door to hall included with optional Bedroom 7 only



Driving Directions: From I-15, go east on Poway Road to Springhurst Drive and turn right (south). Follow signs up the hill to Mountain Pass Road, and turn left to furnished models.

