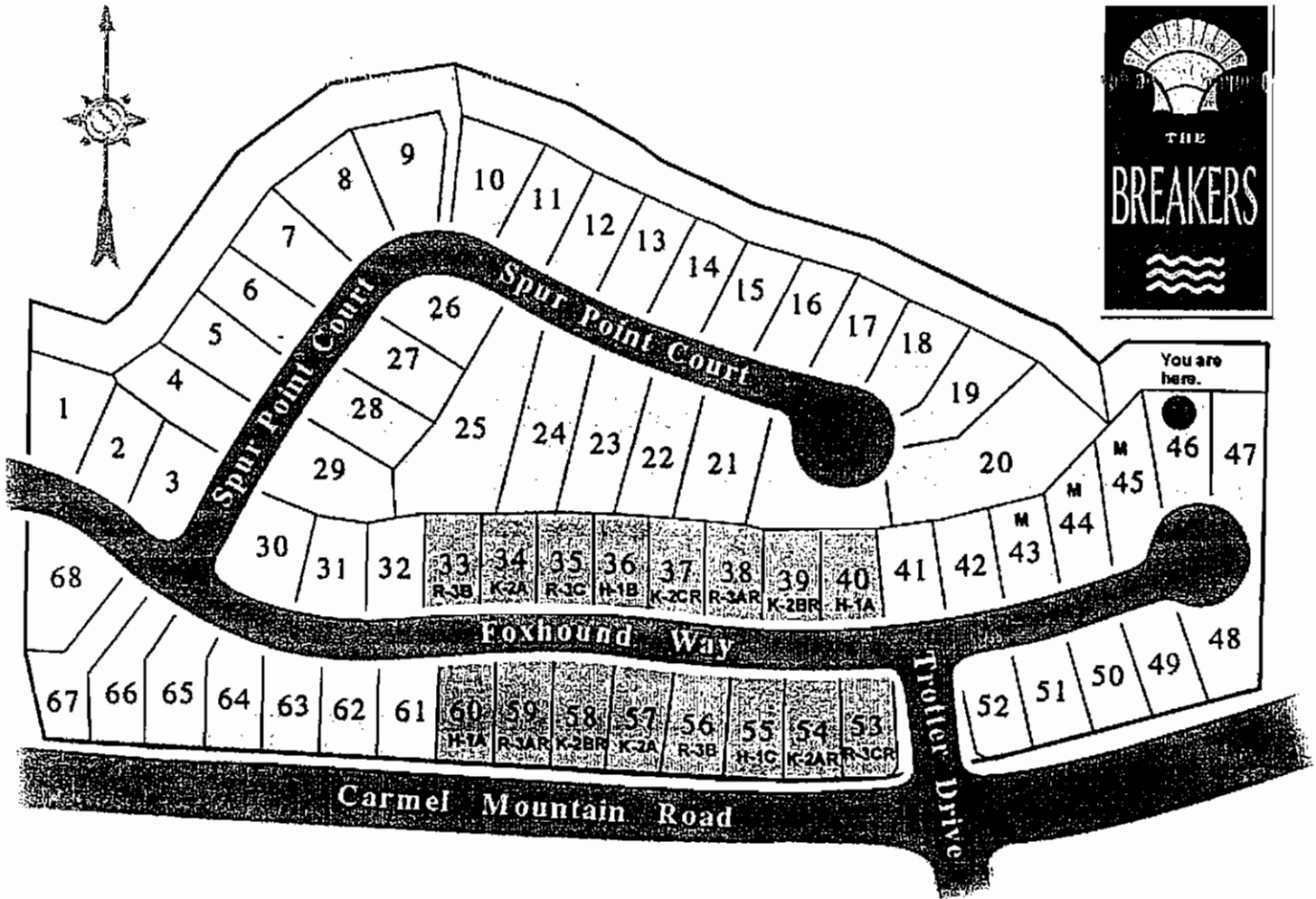


# The Breakers



Siteplan is for homesite location only and is not intended to be an exact duplication of the property.

5468 Foxhound Way  
 San Diego, CA 92130  
 (858) 793-9322

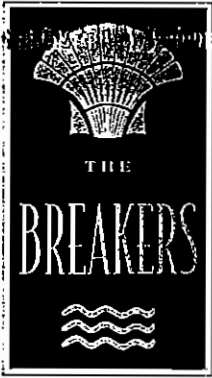
In an effort to continuously improve our homes, Greystone Homes reserves the right to change floorplans, elevations, specifications, materials and prices without prior notice. All plans, landscaping, floorplans, renderings and maps are artist's conception and are not intended to be an exact duplication of either building or landscaping. Variations in floorplans and elevations do exist and square footages are approximate and will vary. Window locations and sizes as well as specific detailing may vary with different locations and elevations.

The decorator items in the model, including and not limited to furnishings, window coverings accent paint walls, wall paper, molding and paneling, special mirrors, special carpeting, and floor coverings, upgraded appliances and lighting fixtures, patio covers, landscaping and hardscaping and certain fences are for suggestion and display only and are not included in the purchase price. Please see New Home Consultant for details.

The Retail Values listed on Lennar's "Everything's Included Features" brochures are our estimates of the price for such items if purchased individually. We do not in any way represent that they are anything more than our opinion that they represent the actual prices for such items. A purchaser should not rely on these estimates of Retail Value in making their purchase decision and should make their own inquiries of such items.

The specific features in a home may vary from home to home and from one community to another. We reserve the right to substitute equipment, materials, appliances, and brand names with items of equal or higher, in our sole opinion, value. Color and size variations may occur. The prices of our homes, included features, and available locations are subject to change with out notice. Please see the actual home purchase agreement for additional information, disclosures, and disclaimers relating to the home and it's features. Copyright 1998 Lennar Homes, INC.

All communities with homeowner's association have been established to enhance the long-term value and integrity of the community. The association provides a vehicle for maintaining community common areas. The association is financially supported by all homeowners of said community. Membership is not automatic. If a Community Facility District or Landscape Maintenance District should occur within said community, homeowners automatically participate to support local schools, water and landscape districts.



5468 Foxhound Way

San Diego, CA 92130

858-793-9322

**HUNTER HOUSE**

APPROXIMATELY 3,564 SQUARE FEET

Two Story with Covered Entry Porch ♦ Four to Six Bedrooms ♦ Three Baths ♦ Formal Living Room ♦ Formal Dining Room with Built-in Cabinetry and French Doors to Rear Yard ♦ Gourmet Kitchen with Granite Countertops, Viking 6 burner Cooktop, Refrigerator with Cabinet Panels, and Veggie Sink at Center Island ♦ Breakfast Nook with Pantry & French Doors to Rear Yard ♦ Generous Family Room with Raised Hearth Wood-burning Fireplace and Entertainment Niche ♦ Tech Center on Upper Level ♦ Interior Laundry Room with Sink ♦ Three-Car Tandem Garage

From \$ 627,500**KINGSCOTE**

APPROXIMATELY 3,409 SQUARE FEET

Two Story ♦ Three – Five Bedroom ♦ Four Baths ♦ Loft ♦ Den ♦ Formal Dining Room ♦ Formal Living Room with Wood-Burning Fireplace ♦ Gourmet Kitchen with Granite Countertops, Viking 6-Burner Cooktop, Refrigerator with Cabinet Panels, Center Island with sink and Built-In Desk ♦ Breakfast Nook ♦ Spacious Family Room with Raised Hearth Wood-Burning Fireplace ♦ Tech Center on Upper Level ♦ Interior Laundry Room with Sink ♦ Three-Car Split Garage

From \$ 648,000**ROSECLIFF**

APPROXIMATELY 3,730 SQUARE FEET

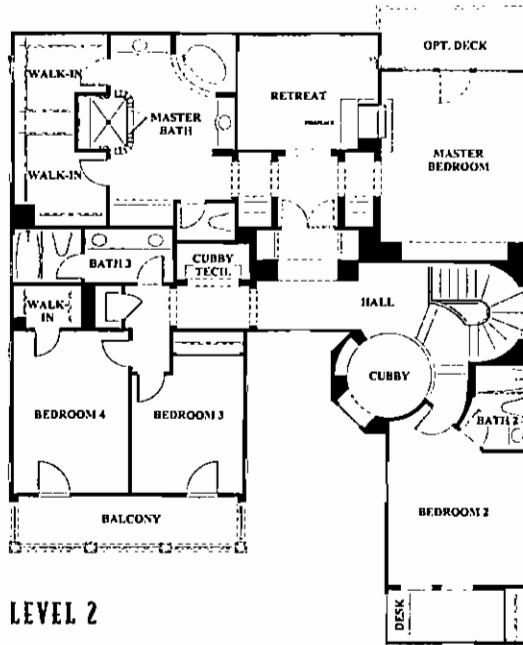
Two Story Home with Courtyard Entry ♦ Five Bedrooms ♦ Four and one-half Baths ♦ Formal Dining Room with French Doors to Courtyard Entry ♦ Formal Living Room ♦ Convenient Kitchen with Granite Countertops, Viking 6-Burner Cooktop, Refrigerator with Cabinet Panels and Center Island Prep Center ♦ Breakfast Nook ♦ Generous Family Room with Cozy Corner Wood-Burning Fireplace with Raised Hearth and Entertainment Niche ♦ Master Bedroom Suite with Wood-Burning Fireplace and Separate Retreat ♦ Tech Center on Upper Level ♦ Cubby at Bedroom Two ♦ Interior Laundry Room with Sink ♦ Three-Car Split Garage

From \$ 668,000



# Rosecliff

Approximately  
3,730 Sq. Ft.

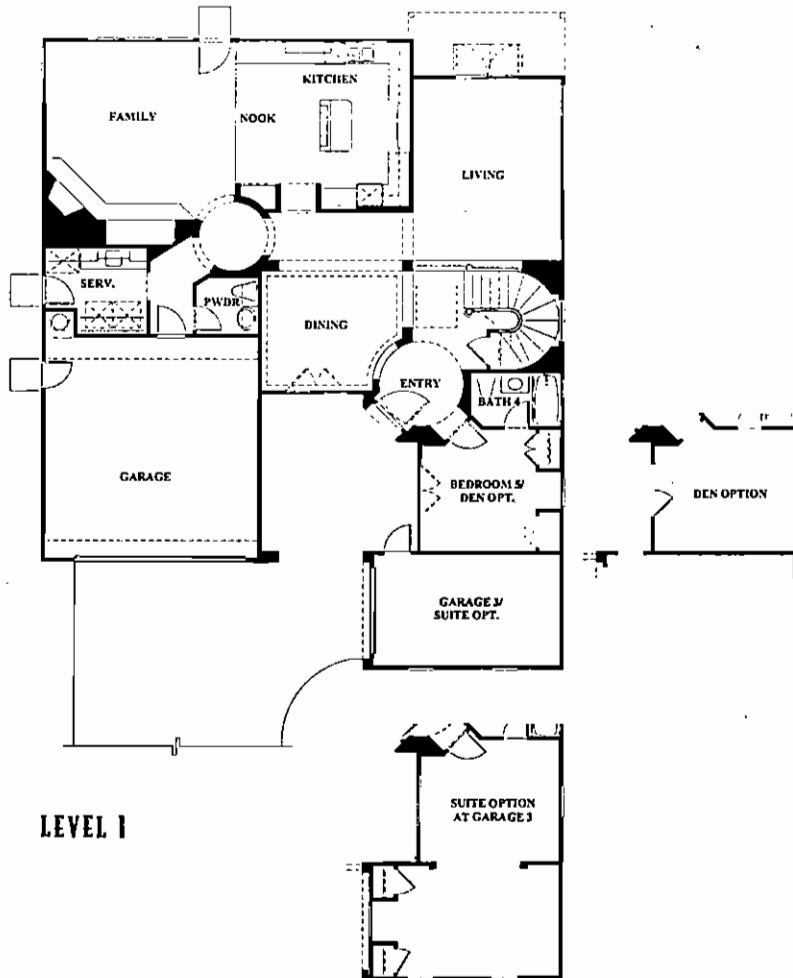


LEVEL 2

PRELIMINARY

Optional  
Bedroom Suite at  
Bedroom  
5/Garage 3

Optional Deck  
Off Master  
Bedroom Suite



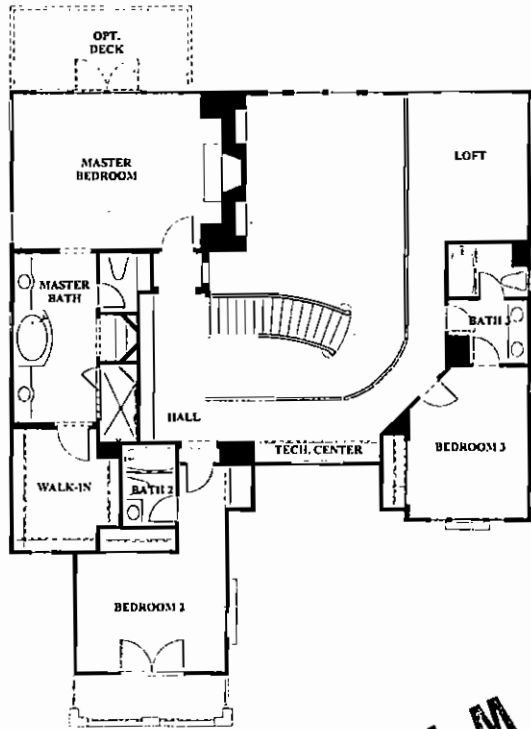
LEVEL 1





# Kingscote

Approximately  
3,409 Sq. Ft.

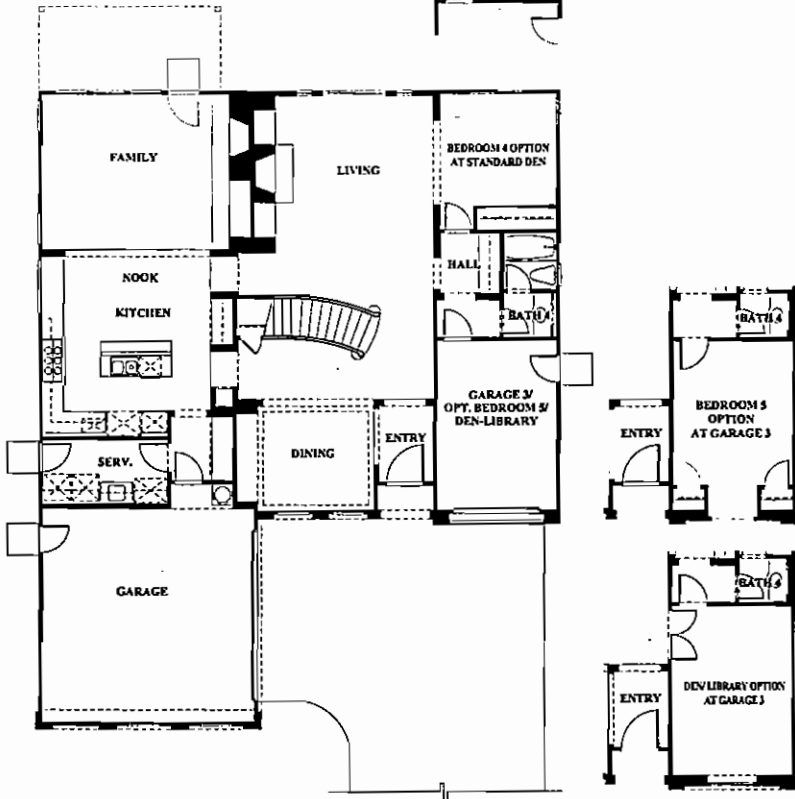
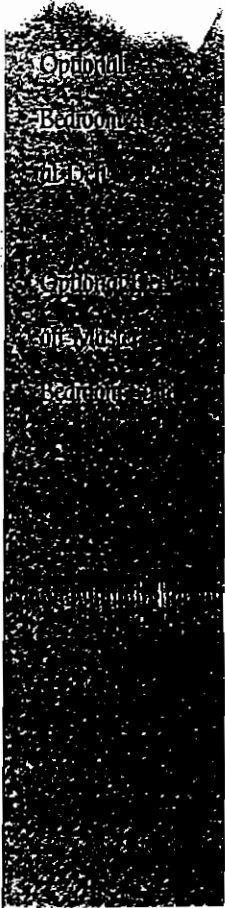
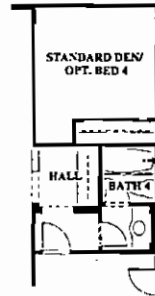


LEVEL 2

PRELIMINARY

Optional  
Bedroom 5 at  
Garage 3

Optional Den at  
Garage 3

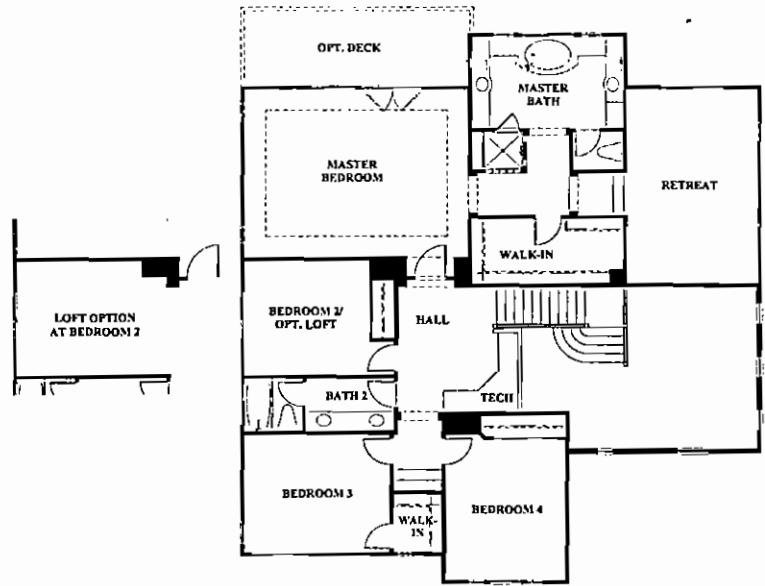


LEVEL 1



# Hunter House

Approximately  
3,564 Sq. Ft.

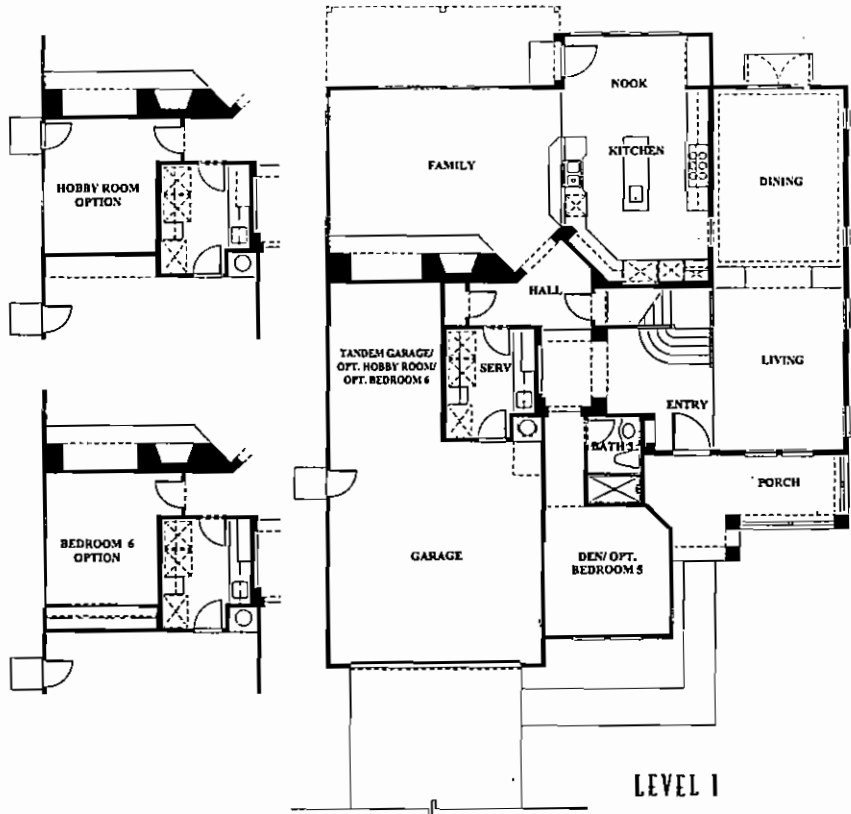
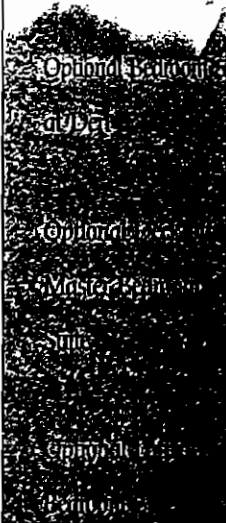
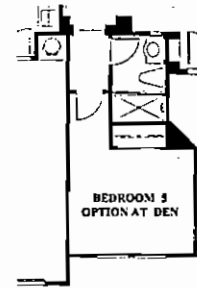


LEVEL 2

Optional Hobby  
Room at Tandem  
Garage

Optional Bedroom 6  
at Tandem Garage

PRELIMINARY



LEVEL 1