

Ph: (619) 485-7211

KAUFMAN AND BROAD OF SAN DIEGO, INC.

Total Units: 76 **Lot Sizes:** 4,000 SF **Plans Available:** 3

PLAN	BR	BA	LEVELS	GARAGES	SQUARE FOOTAGE
1	3	2.5	2	2	1,891
2	3	2.5	2	2	2,050
3	4	2.5	2	2	2,310

Special Features: All plans include nook, family room, retreat off master bedroom, and interior laundry room.

Architectural Style: Spanish Mediterranean

Location: Rancho Bernardo

Model Complex: Model homes are currently under construction and are scheduled for completion and grand opening in mid-July, 1989.

Projected Sales Start: May 1989

Expected Price Range: From under \$250,000

Projected Move-In Date: (Phase 1) - Approximately September, 1989

Homeowners Fee: Yes.

APRIL 21, 1989

FACT SHEET

THE PROMENADE AT CALIFORNIA MAISON

CALIFORNIA MAISON

Note: Builder reserves the right to change floorplans and specifications prior to sale or reservation.

- 1. Balconies
 - 2. Dining fixtures
 - 3. Automatic garage Door Openers
- OPTIONAL:

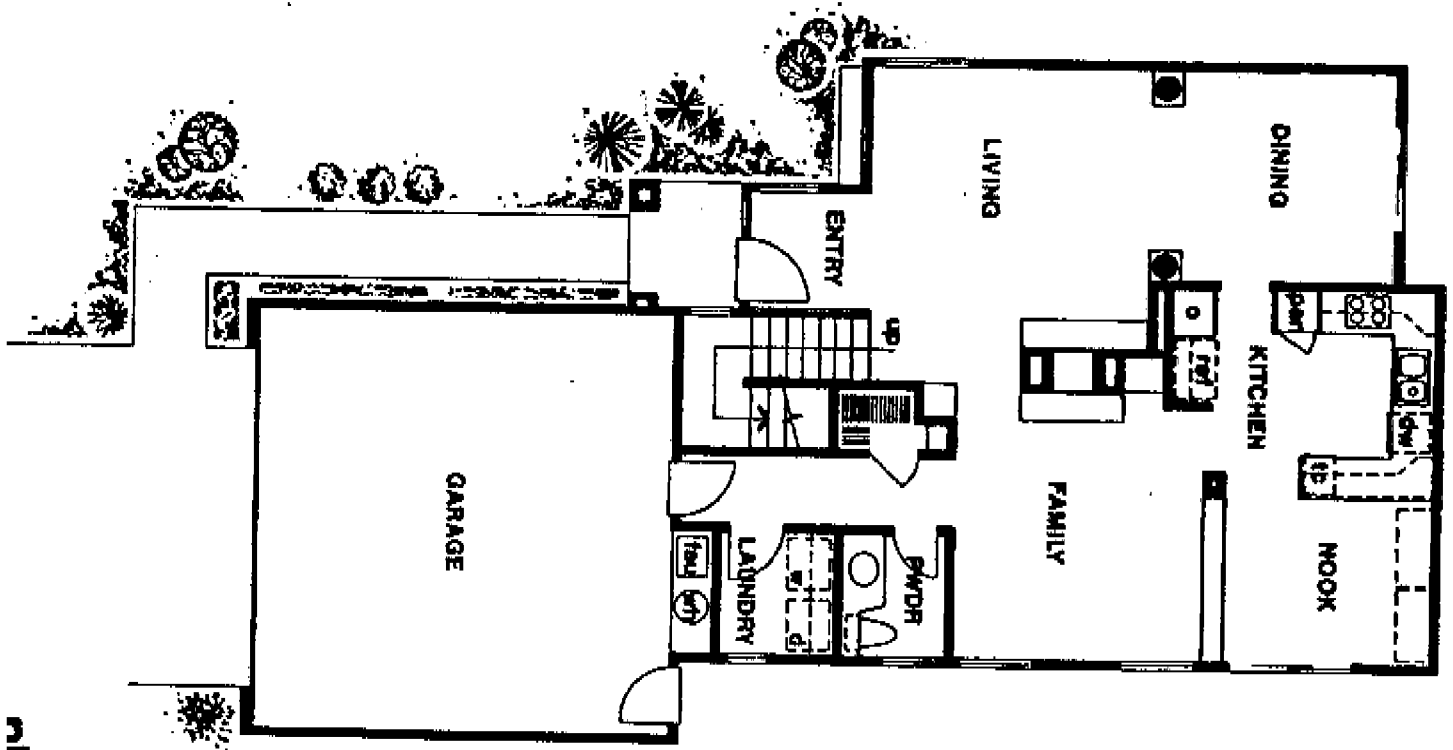
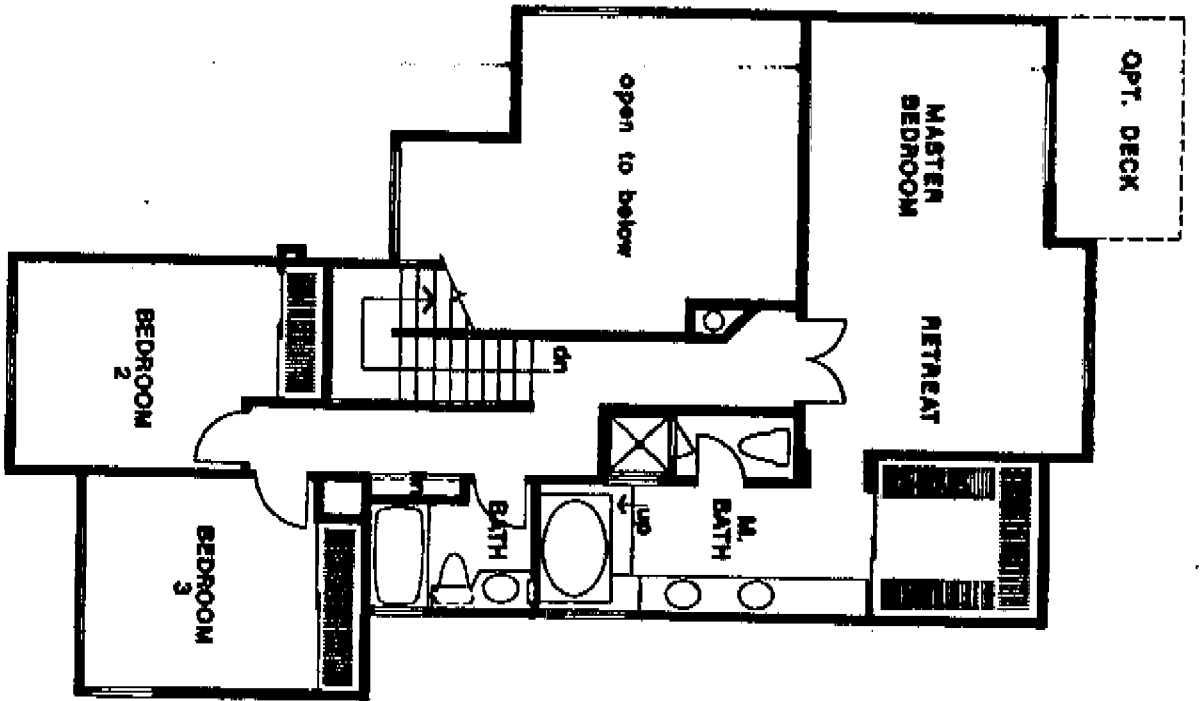
- 1. Entry doors
- 2. European columns
- 3. Interior laundries
- 4. Master Bedroom Retreats
- 5. 10' Plates, 1st floor
- 6. Finished garages with Fluorescent Lighting
- 7. Walk-In Closets
- 8. Entry court yard walls
- 9. Coffered Dining Room ceilings
- 10. Powder Rooms with Pedestal Lav & Oval Mirrors
- 11. Two-story ceilings
- 12. Wood Hand Rails
- 13. Dual glazed windows

PROMENADE

UNIT NO. 5 FEATURES

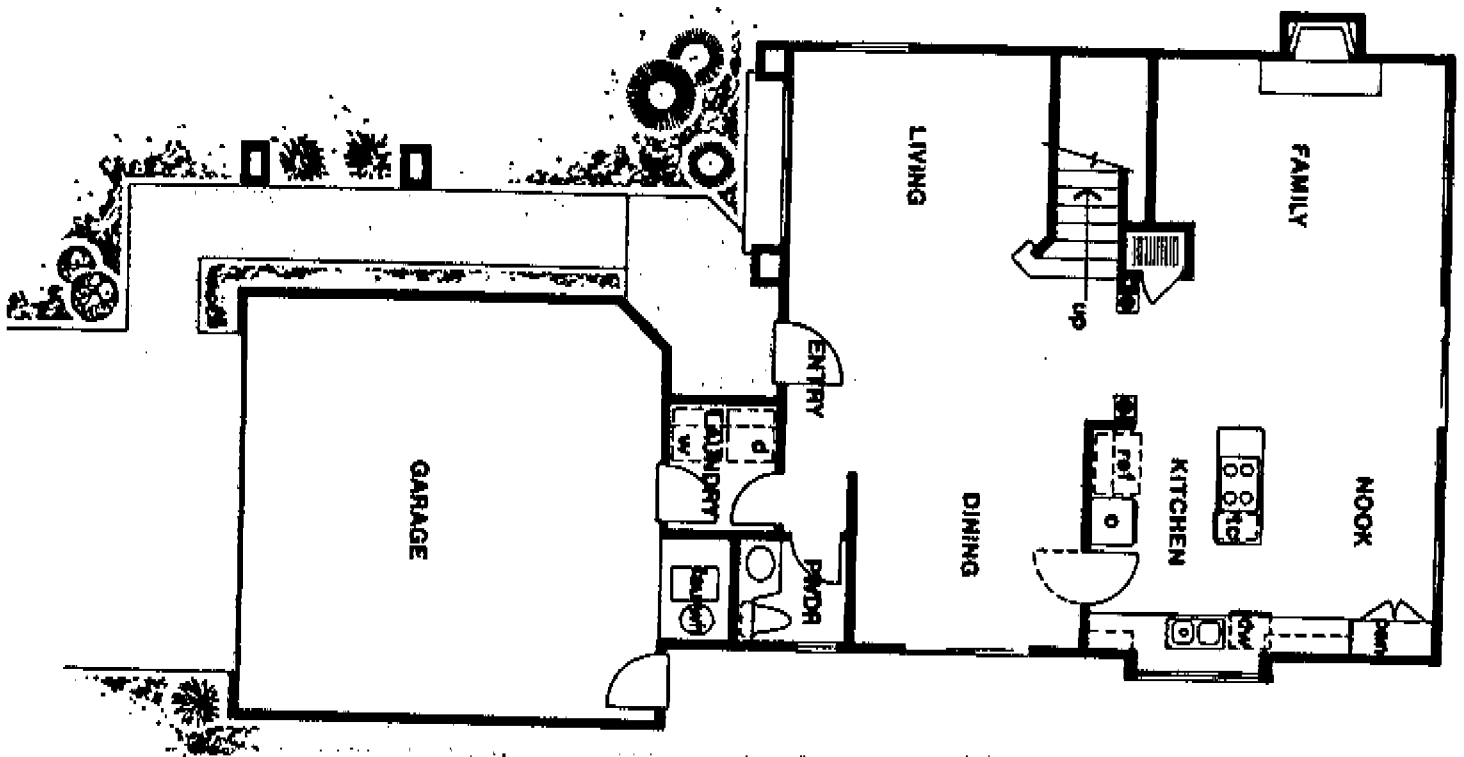
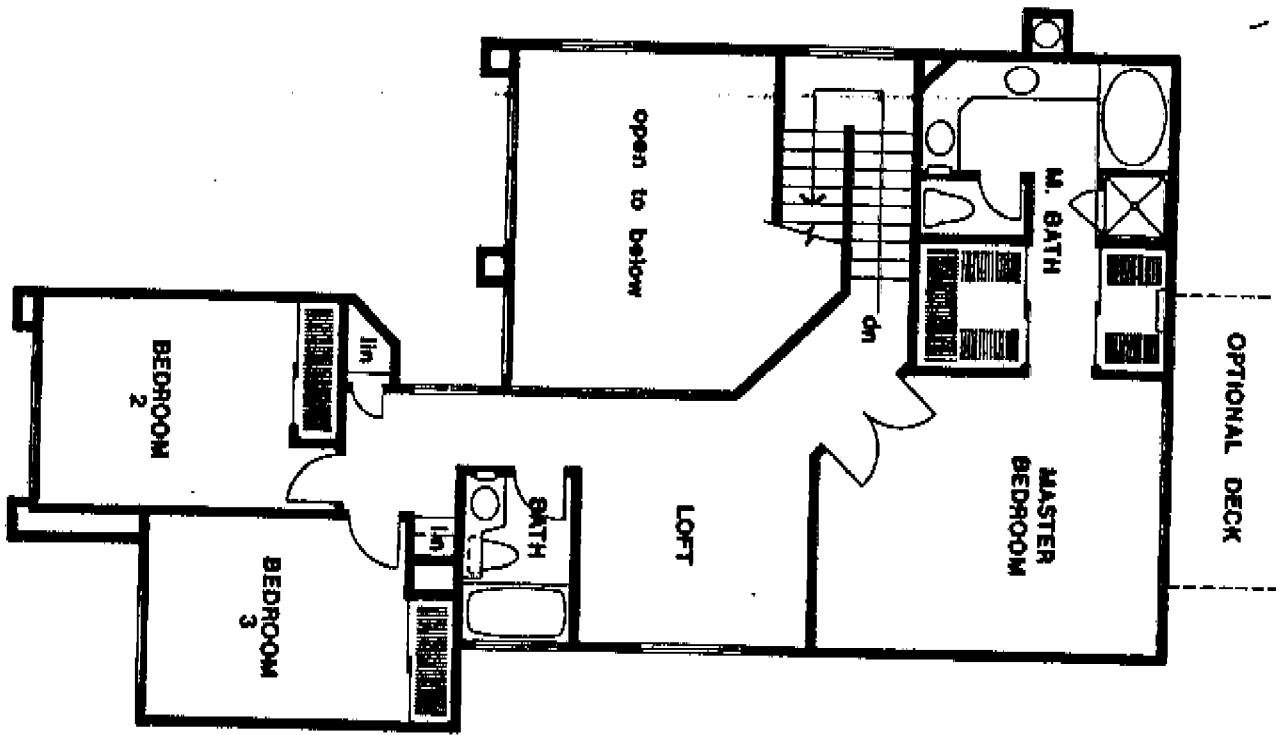
CALIFORNIA MAISON

SECOND FLOOR

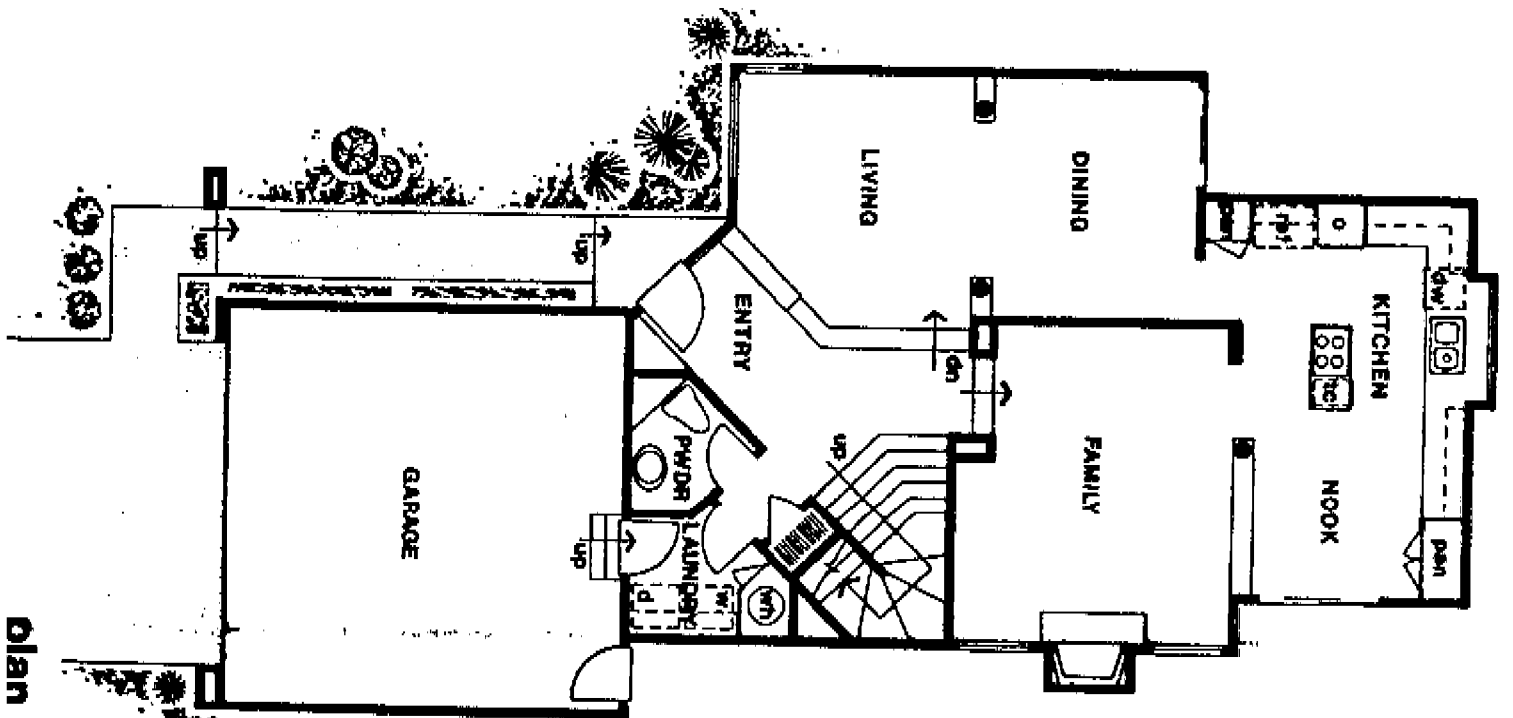
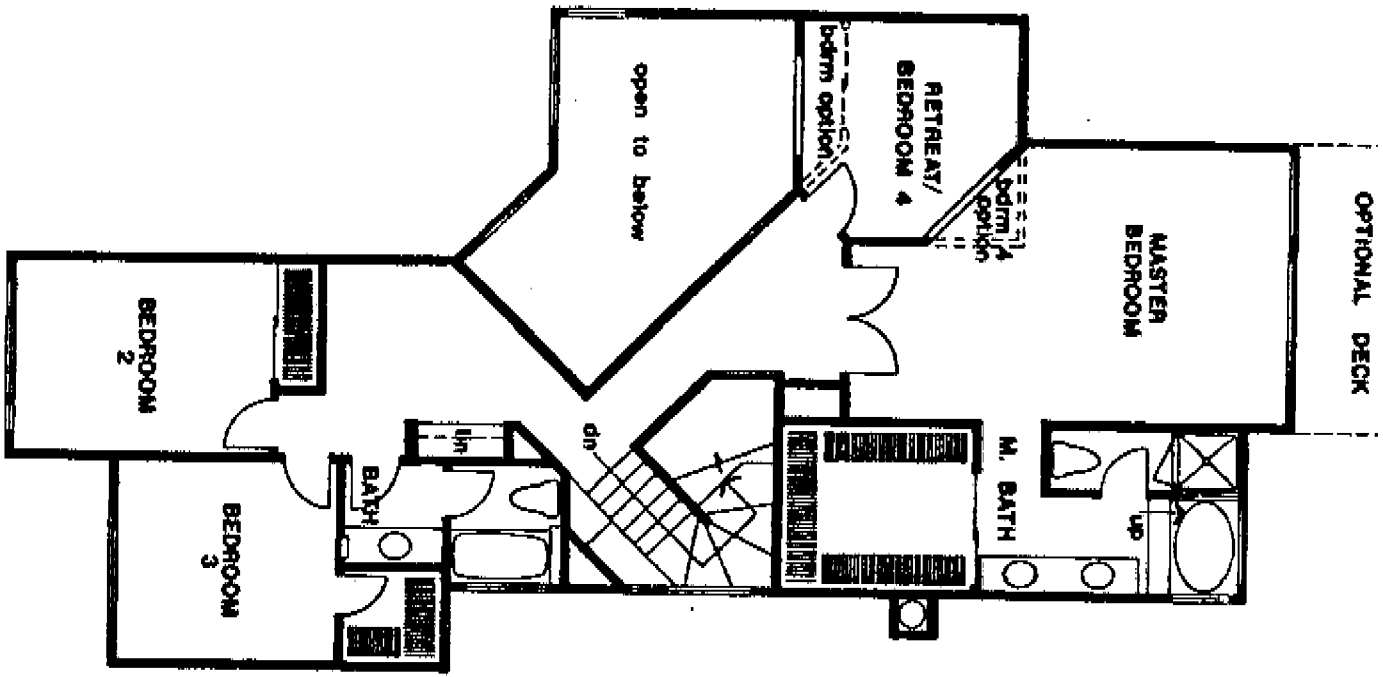


nlbn ana

SECOND FLOOR



SECOND FLOOR



Plan three