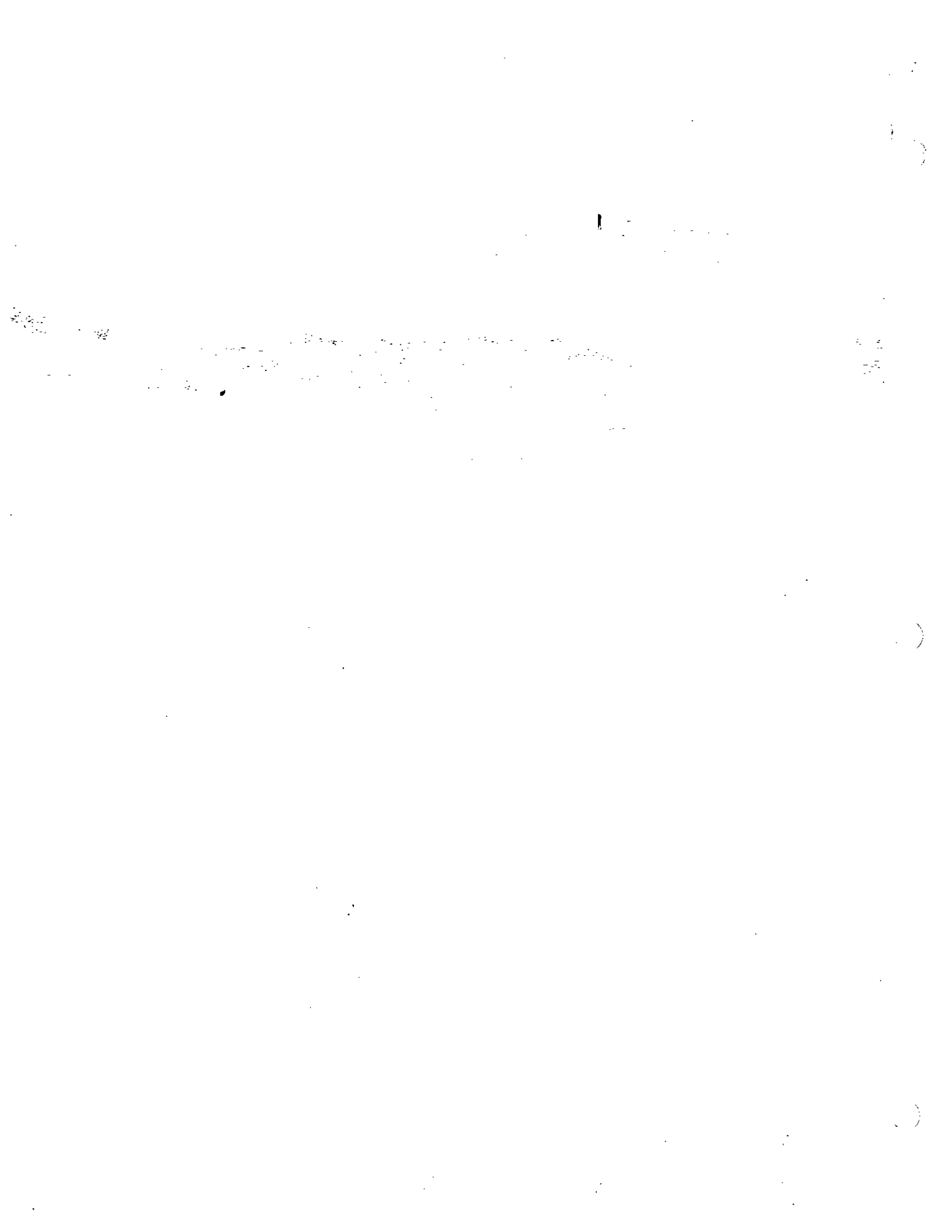
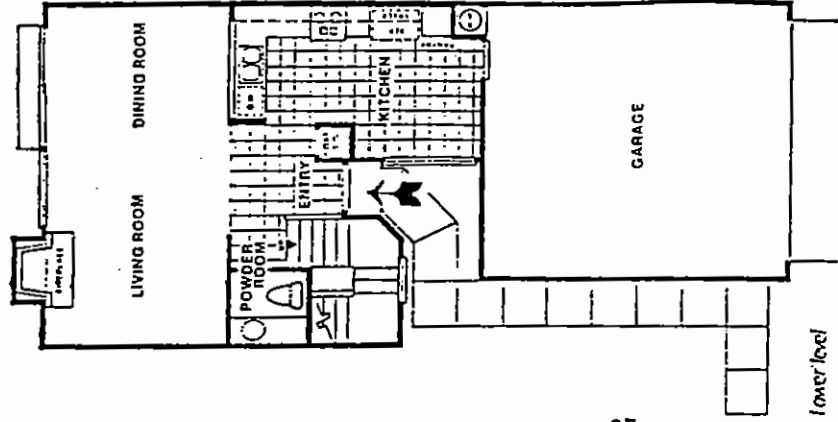
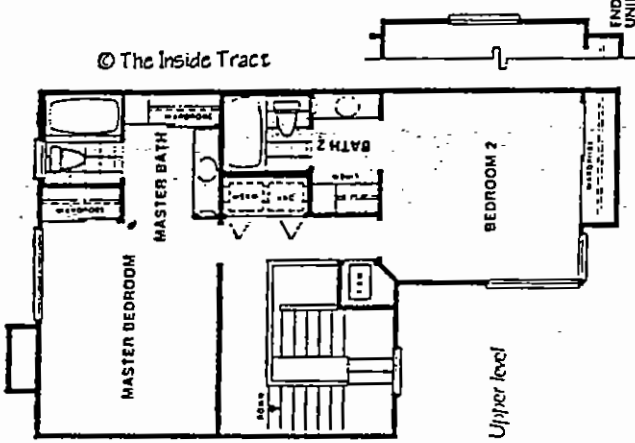


# Cambria





Lower level

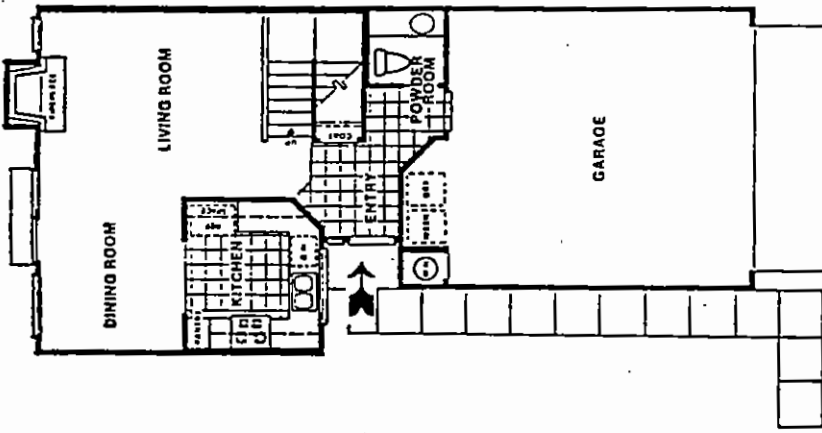


Upper level

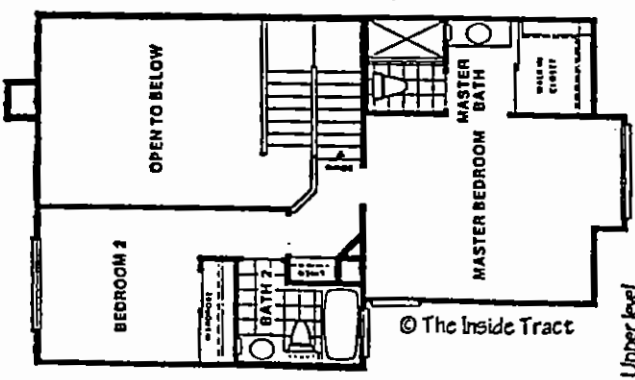
© The Inside Tract

**CAMBRIA DEL MAR HIGHLANDS**

Model: PLAN 2  
 Area: EDM B/T Code: CMB  
 Approx SQ/FT: 1267  
 ©The Inside Tract



Lower level

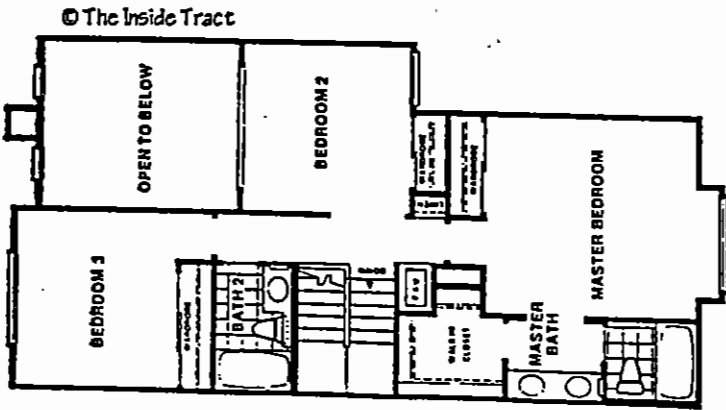


Upper level

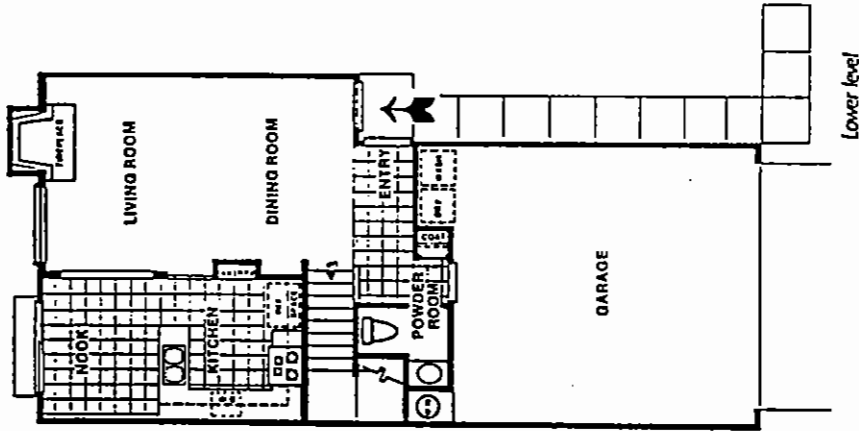
© The Inside Tract

**CAMBRIA DEL MAR HIGHLANDS**

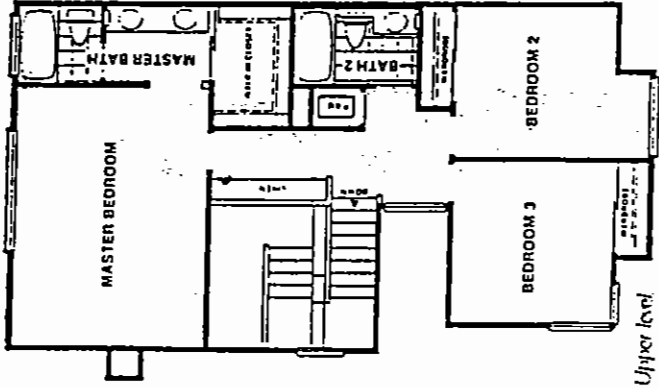
Model: PLAN 1  
 Area: EDM B/T Code: CMB  
 Approx SQ/FT: 1100  
 ©The Inside Tract



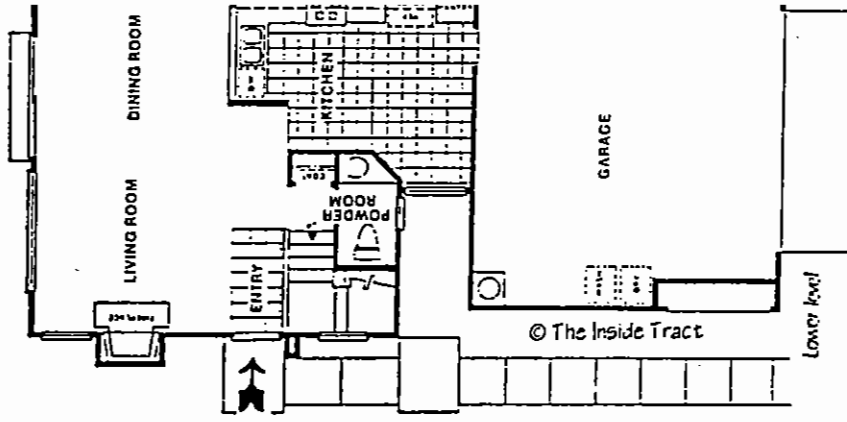
Upper level



Lower level



Upper level



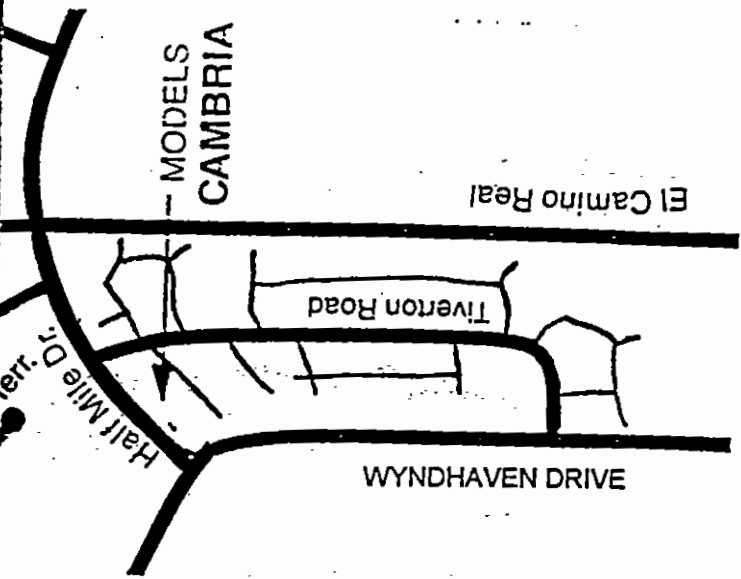
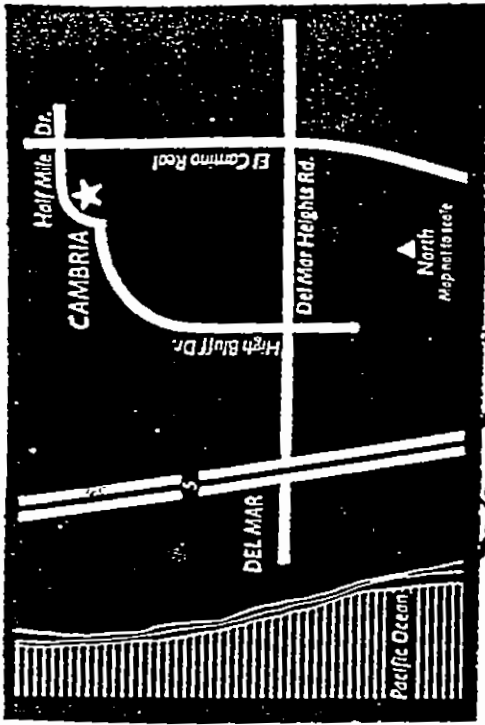
Lower level

**CAMBRIA DEL MAR HIGHLANDS**

Model: PLAN 3  
 Area: EDM B/T Code: CMB  
 Approx SQ/FT: 1349  
 ©The Inside Tract

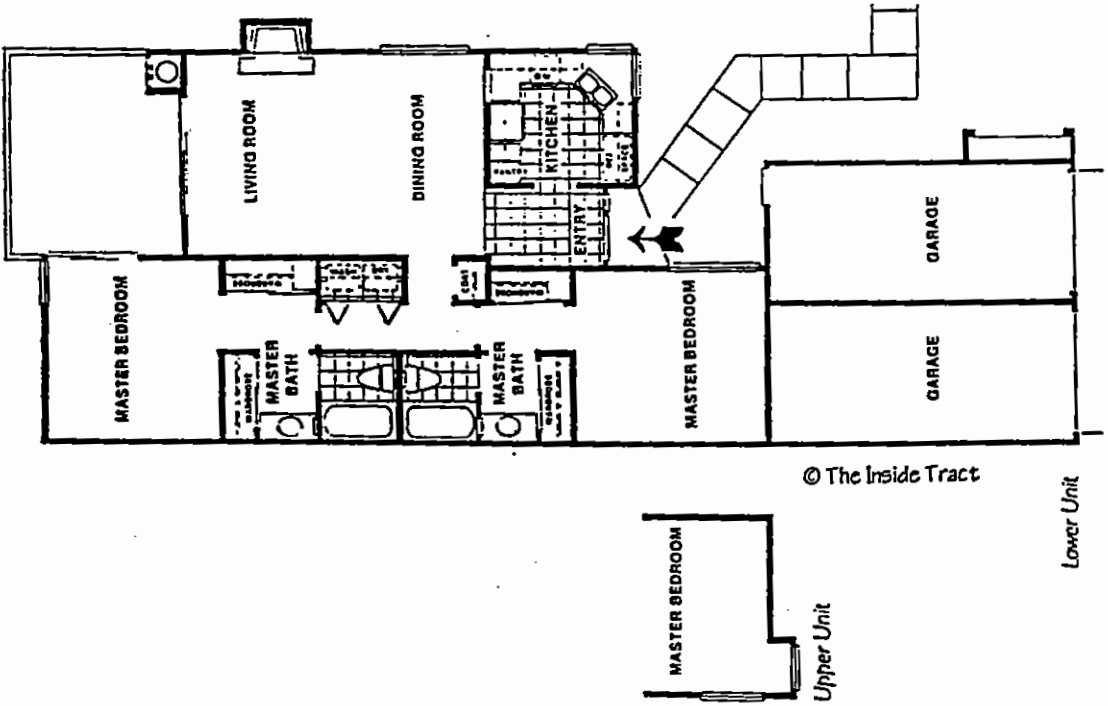
**CAMBRIA DEL MAR HIGHLANDS**

Model: PLAN 4  
 Area: EDM B/T Code: CMB  
 Approx SQ/FT: 1425  
 ©The Inside Tract



**CAMBRIA - DM HIGHLANDS**

Site Plan - B/T: CDH  
 Caution: There may be additions or changes to these site plans



**CAMBRIA DEL MAR HIGHLANDS**

Model: PLAN 5  
 Area: EDM B/T Code: CMB  
 Approx SQ/FT: 1027  
 ©The Inside Tract

# Features

Information Deemed Accurate  
But Not Guaranteed

© The Inside Tract

## ARCHITECTURAL FEATURES

- Handsome townhomes built in California traditional style
- Concrete tile roof
- Paned windows on front and side elevations
- Patio fencing
- Finish concrete walks and driveway
- Weatherproof exterior electrical outlet
- Exterior gas outlet for barbecue

## ELEGANT LIVING AREAS

- Solid wood, 4 panel entry door with glass detail
- Formal Entry and Living Room featuring volume ceilings
- Plush carpeting in choice of designer colors included in Living Room, Dining Room, Master Suite, Secondary Bedrooms, Halls, Stairway and Powder Room
- Wood burning fireplace with gas log-lighter valve featuring brick hearth and face and wood mantels
- Custom hand-troweled ceiling treatments
- Sliding tempered glass doors to private areas
- Distinctive, elegant lighting fixtures and architecturally specified recessed lighting
- Quality vinyl floor covering included in Entry, Kitchen, Nook, Bathrooms and Interior Laundry area

## GOURMET KITCHEN

- Hand-set ceramic tile countertops
- Oak-stained cabinetry
- Gas range featuring continuous-cleaning double ovens
- Dishwasher
- Storage pantry
- Refrigerator space equipped with water line for ice-maker

## RECREATION AND LANDSCAPE

- Heated pool and spa adjacent to bath house
- Tennis Court
- Professionally maintained landscaped areas
- Underground utilities

## PRIVATE MASTER SUITE

- Spacious master bedroom
- Large wardrobe or walk-in closet
- Volume ceilings
- Private dressing area

## CUSTOM FEATURES

- Interior Laundry area (some plans)
- 220-V. and gas service for clothes dryer
- Forced-air heating with set back thermostat
- Oak-stained linen cabinetry
- Prepared for optional air conditioning
- Pre-wired for Cable TV and telephone
- Smoke detector with warning buzzer
- Full insulation of walls and ceiling
- Automatic garage door opener with two controls

## OPTIONS

(available at additional cost)

- Upgrade carpet and pad
- Upgrade hard-surface flooring
- Mirrored wardrobe doors
- Gas range with microwave eye-level oven
- Air conditioning

CAMBRIA DEL MAR HIGHLANDS