



CANYON TRAILS
BY SHEA HOMES





**THE HORIZON
PLAN 1**

FOUR BEDROOMS OR
THREE BEDROOMS PLUS DEN
THREE BATHROOMS
APPROX. 2,260 SQUARE FEET

\$111/ft

PRICED FROM \$ **251,900**

**THE RIDGE
PLAN 2**

FOUR BEDROOMS PLUS
SUPER FAMILY ROOM OR
FIFTH BEDROOM OPTION
THREE BATHROOMS
APPROX. 2,375 SQUARE FEET

\$103/ft

PRICED FROM \$ **243,900**

**THE SUMMIT
PLAN 3**

FOUR BEDROOMS PLUS
BONUS ROOM OR
FIFTH BEDROOM OPTION
THREE BATHROOMS
APPROX. 2,503 SQUARE FEET

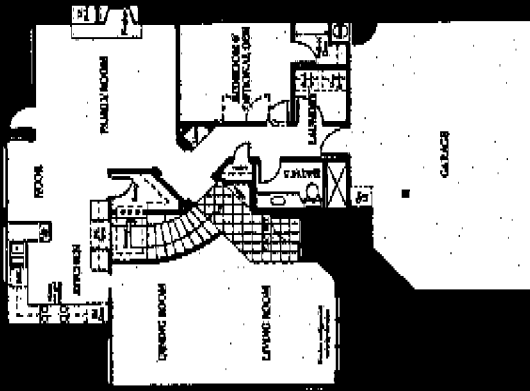
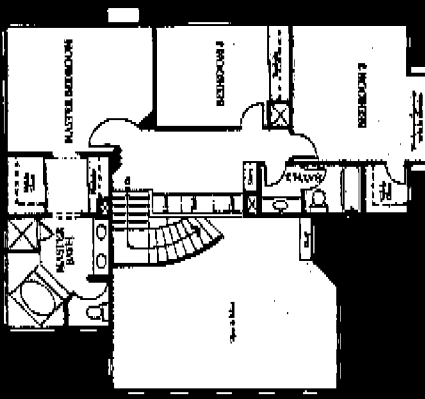
\$106/ft

PRICED FROM \$ **265,900**

Shea Homes, in an effort to continuously improve its product, reserves the right to change floor plans, specifications and prices without notice or obligation. Special decorative treatments and landscaping may not be included in the purchase price.

All floor plans, renderings and maps are artist's conceptions and are not intended to be an exact depiction of either the buildings or landscaping. Please see sales representative for details. Due to ever-changing market conditions.

Shea Homes or its representatives make no guarantee, representation or warranty of any kind as to the current or future value of your home or any future appreciation or depreciation in its value.



THE HORIZON



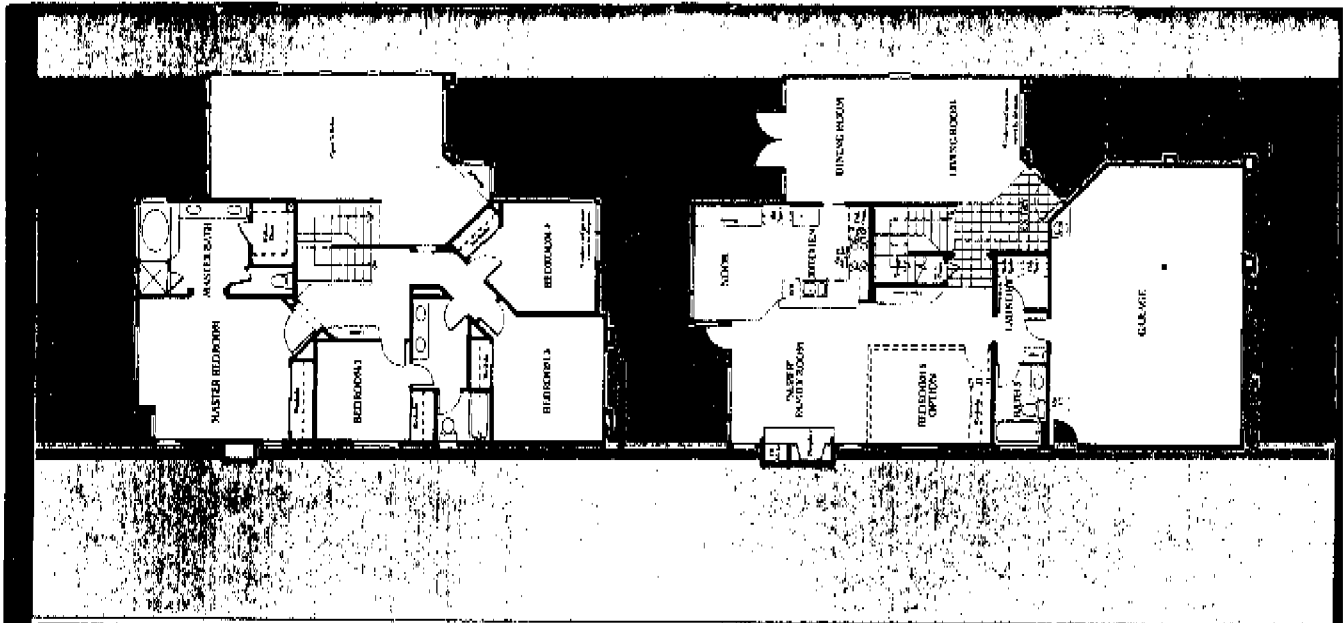
Broaden your horizons and step into a home that greets your family with bold striped upholstery and graphics to launch your imagination. All to show you that here there's something for everyone.

The geometry of windows, so sophisticated when entertaining. The storage in that wonderful walk-in pantry. The cook and connecting family room...spacious and inviting, accented with windows and the warm atmosphere of the fireplace and TV niche. Will the extra bedroom downstairs be your home office,

fitness room, or private guest room? Upstairs, your built-in desk in the hallway is the ideal project headquarters.

And the secondary bedroom is large enough to give your "little acrobats" room to play.

With such an inviting master suite, its arcade of mirrored doors into the bath and the generous step-up oval tub, all The Horizon needs is your family.



THE RIDGE

Continuing along the path, The Ridge peaks your interest.

The fresh presentation of terracotta and crisp blues portray the fresh concept of this home's features. You're drawn through the living and

dining room accented with French doors into the kitchen and super family room. Delightfully over-sized,

the "super" family room is shown with two independent TV seating areas just to make the point...the sky's

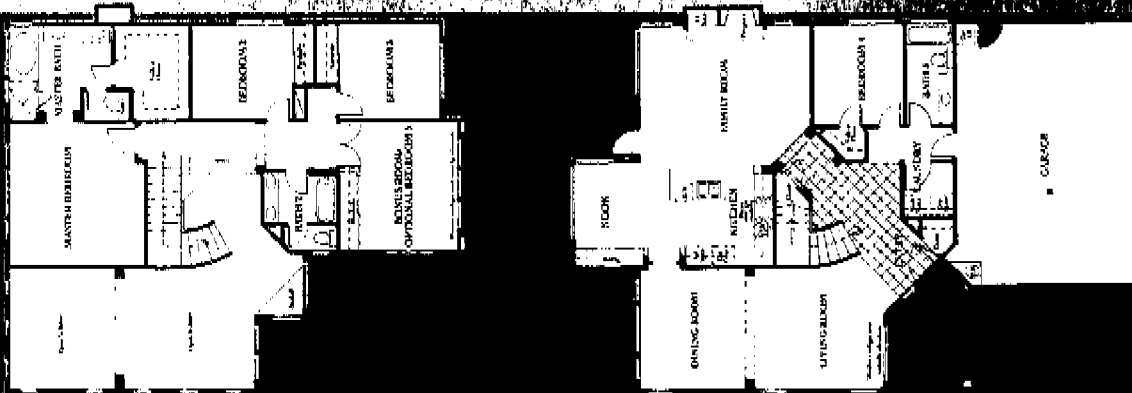
the limit here! Stretch out the family games, write the party invitations...super family rooms lead to

super good times. Upstairs, the children's quarters, designed around their own bath, are vibrant with

youngster's appeal. Finally Mom and Dad can escape to that wonderful master suite, where the spacious

walk-in closet awaits your favorite

terry robe and slippers.



THE SUMMIT

Waiting at the end of the path is your final destination...the largest and most formal of the Canyon Trails homes. Cross its welcoming covered porch and walk through the large tiled entry to a rich botanical theme of hunter green and burgandy. Seating eight easily, the dining room is its own formal stage for those special occasions. Or relax in the coziness of your kitchen nook. Upstairs the master suite invites a lazy recline, while its massive walk-in closet awaits the prize of any shopping spree. Children's rooms down the hall remind you of the great schools nearby. And the large bonus room, stylish with its cut-out windows, is your media getaway...pretzels already on the table, drinks on the tray. We've shown how double glass doors here can shut out the world and let you turn up the volume, and the fun.



What began as a small family-owned business 110 years ago, today stands as one of America's finest examples of integrity, experience and dedication to quality.

Throughout its long history, the J. F. Shea Company has consistently achieved innovation in engineering and construction technology - a



record exhibited in its work on some of the nation's most prized achievements: San Francisco's famed



Golden Gate Bridge. The Bay Area Rapid Transit System (BART)

and the magnificent Hoover Dam. This heritage of quality and innovation is the guiding principle of Shea Homes. By building modern high quality homes of

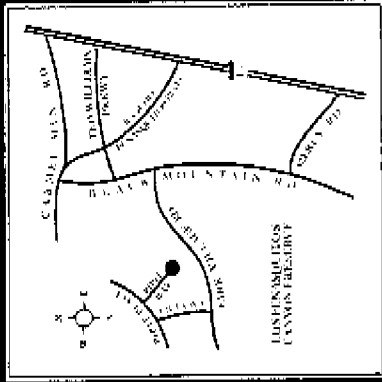
unsurpassed value while contributing vital support to the

community, Shea Homes fulfills its responsibility as a caring corporate citizen. You will see results of this philosophy as you tour



Shea Homes' beautiful community, Canyon Trails.





129240 Pipa Way

San Diego, California 92129

619 • 538 • 8550

Circle Four Enterprises