

CHAPALA

AT RANCHO BERNARDO

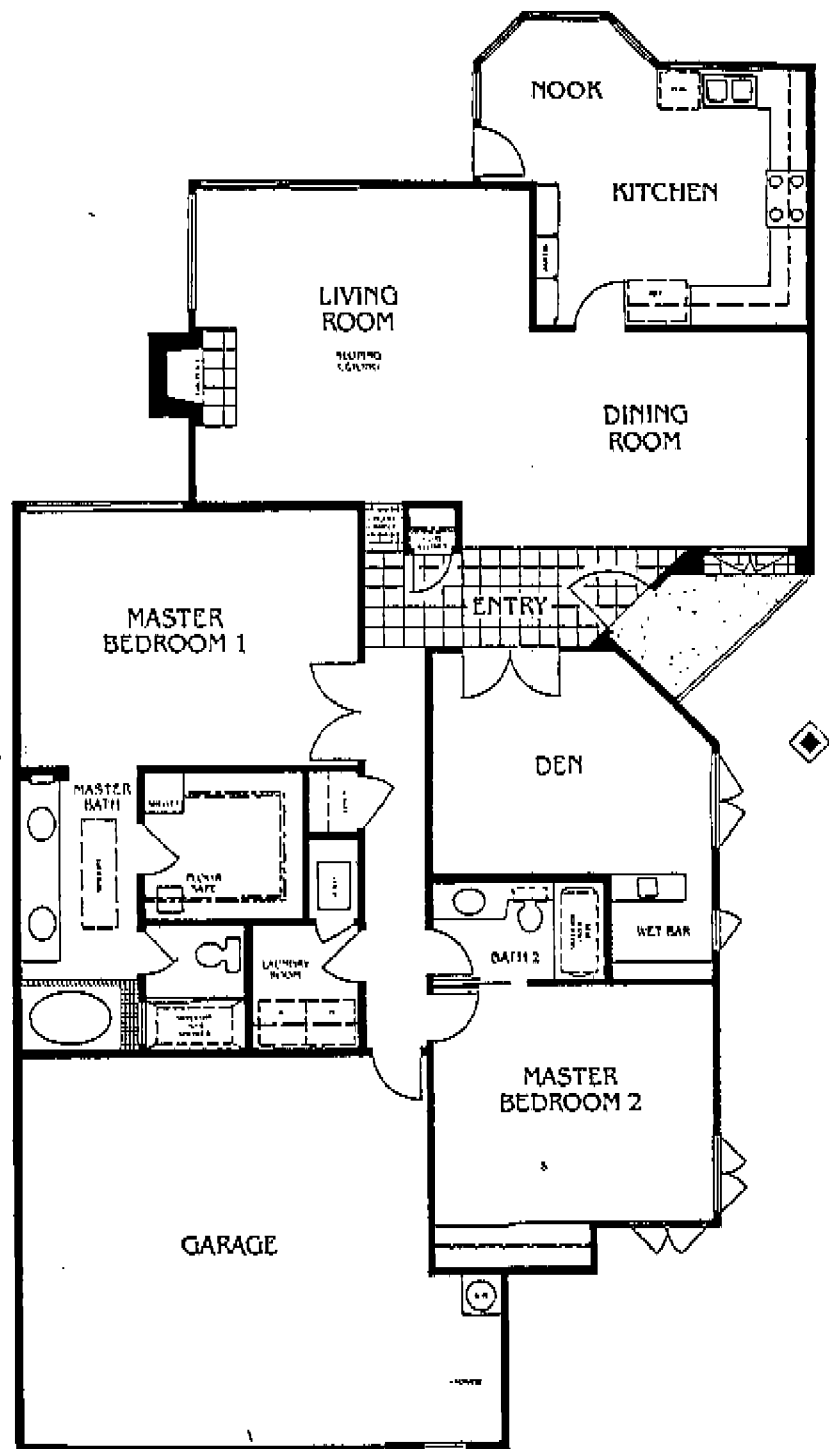


 M O N T E C I T O

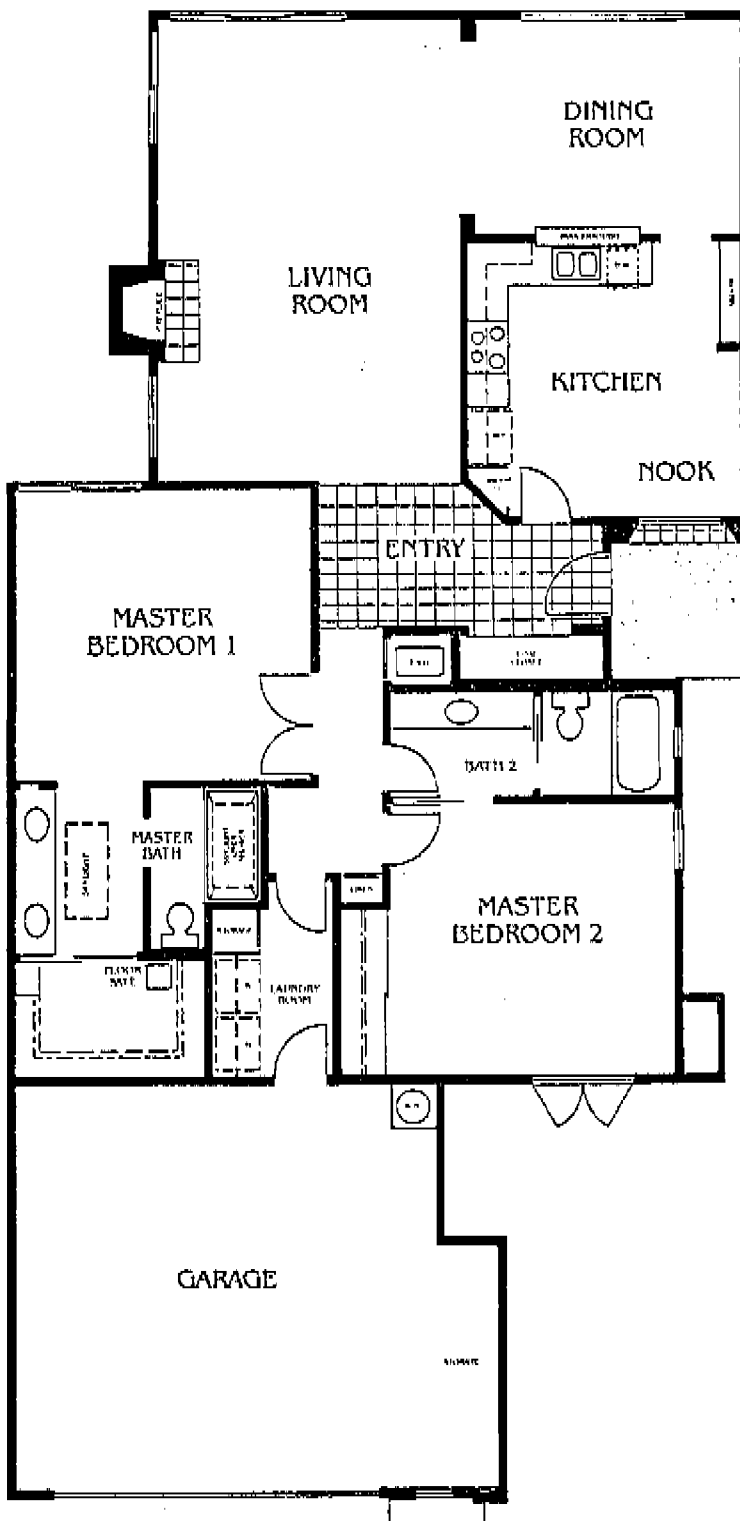


*Plan C: Two bedroom and Den,
two baths, 1819 square feet.*

High wood beamed ceilings and corner windows amplify the spaciousness of the Montecito. The carefully detailed brick and stucco fireplace provides an impressive focal point upon entry. A large den with wet bar opens onto the living room for convenient entertaining. The expansive kitchen boasts a bay windowed nook which leads to a private patio area. The large master suite also has access to the rear yard. Natural light floods the separate tiled shower and roman tub in the master bath via skylights. Golf cart storage space is provided in the fully finished garage.



 S A N T A B A R B A R A



17678



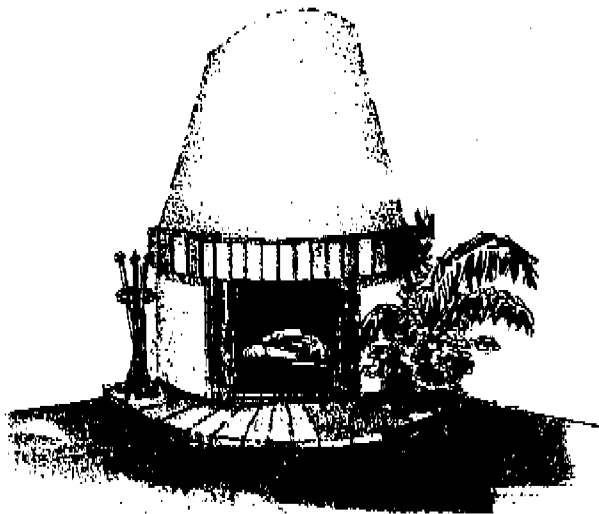
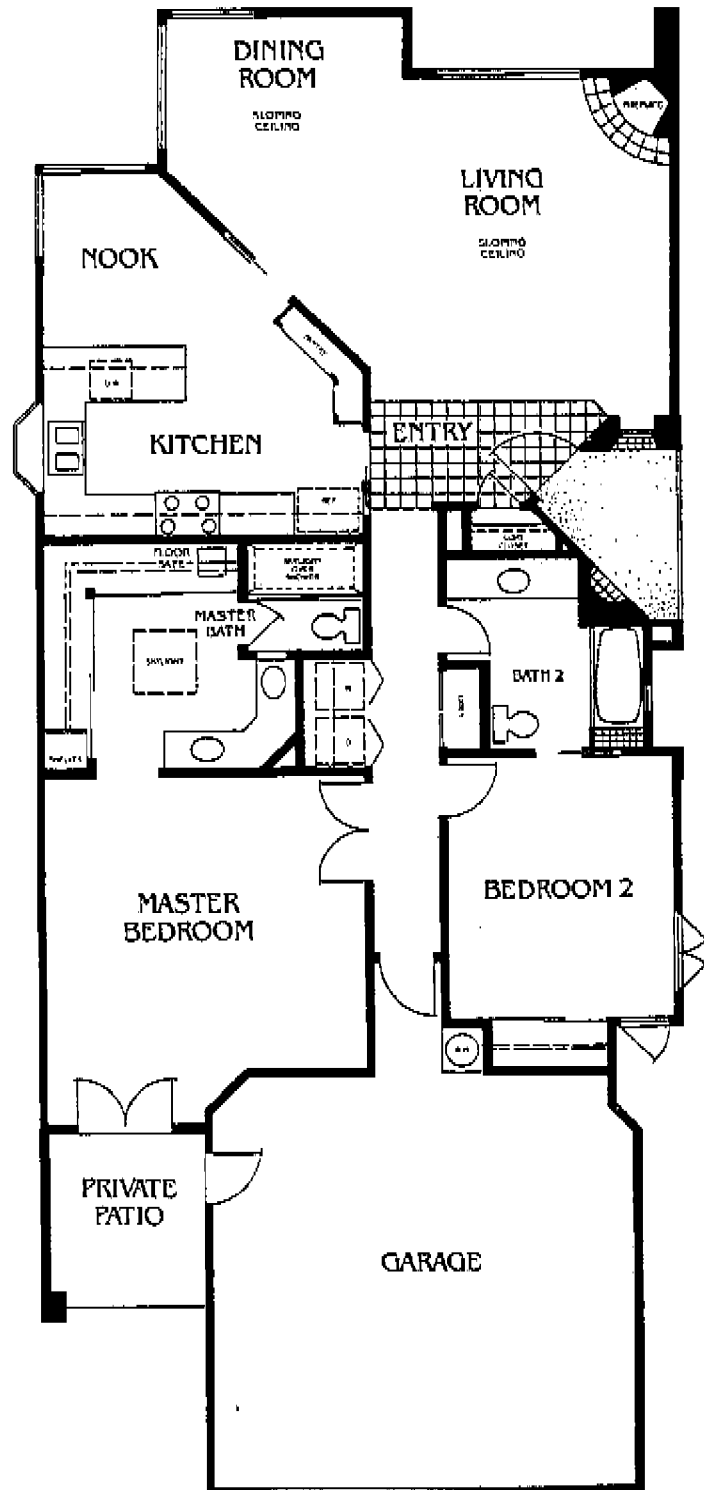
*Plan B. Two bedrooms, two baths,
1520 square feet.
1585*

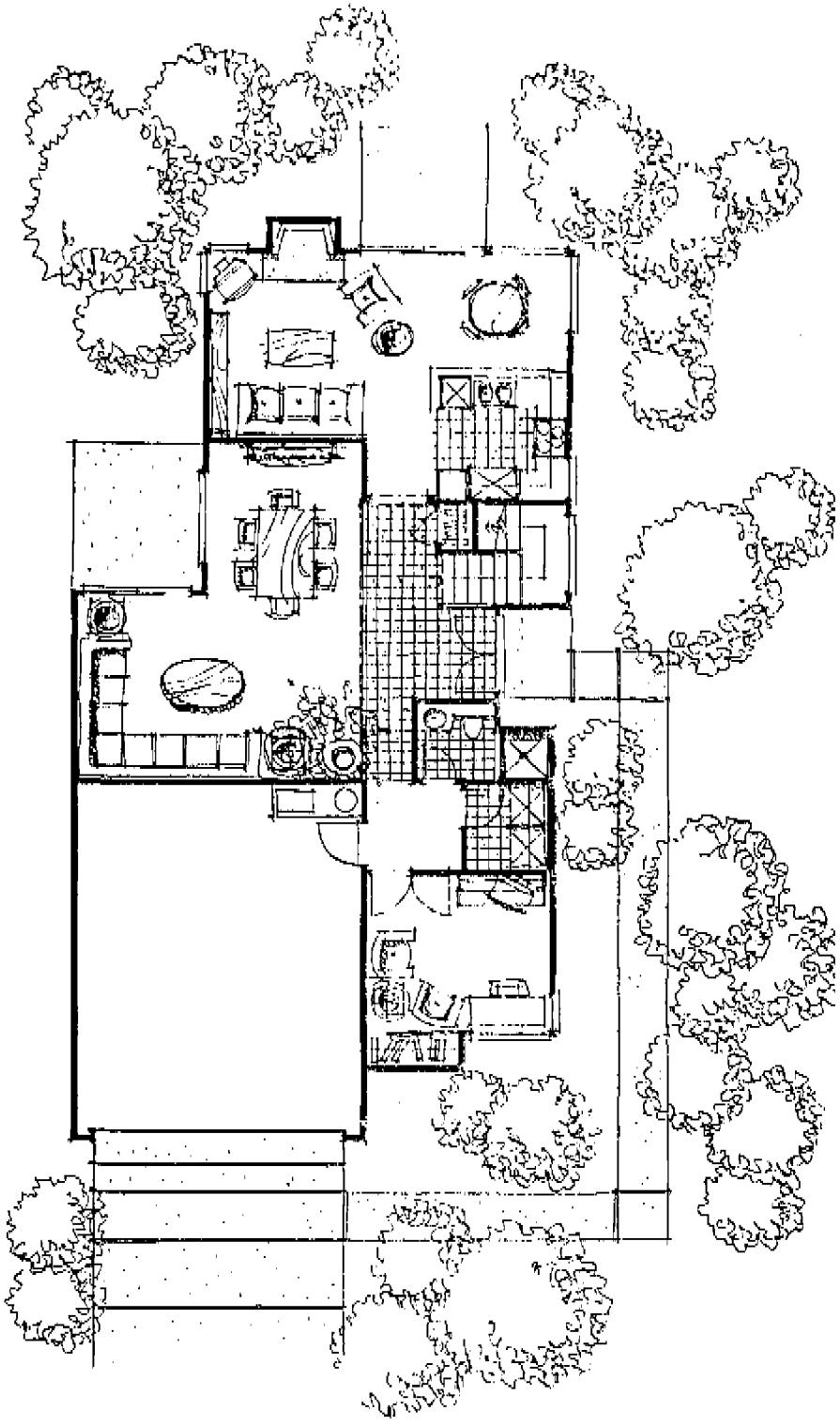
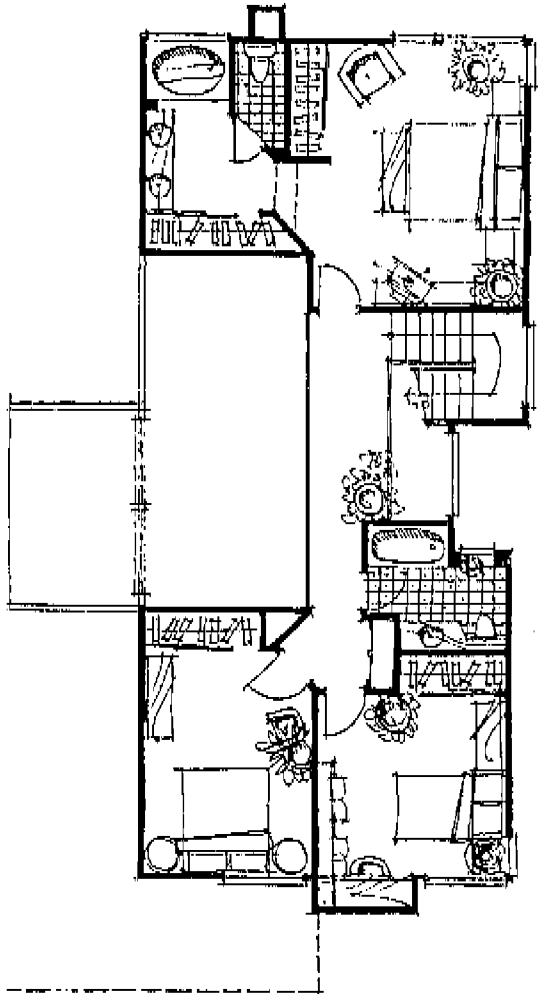
A tiled entry leads to a sunny living room enhanced by wrap-around windows and a fireplace with full length brick hearth. The formal dining room opens to a comfortable kitchen and breakfast alcove. The two generous master suites have plenty of privacy and the master bath enjoys natural light through large skylights. The oversized two car garage provides ample storage or hobby space.

C A R M E L

Plan A. Two bedrooms, two baths, 1463 square feet.

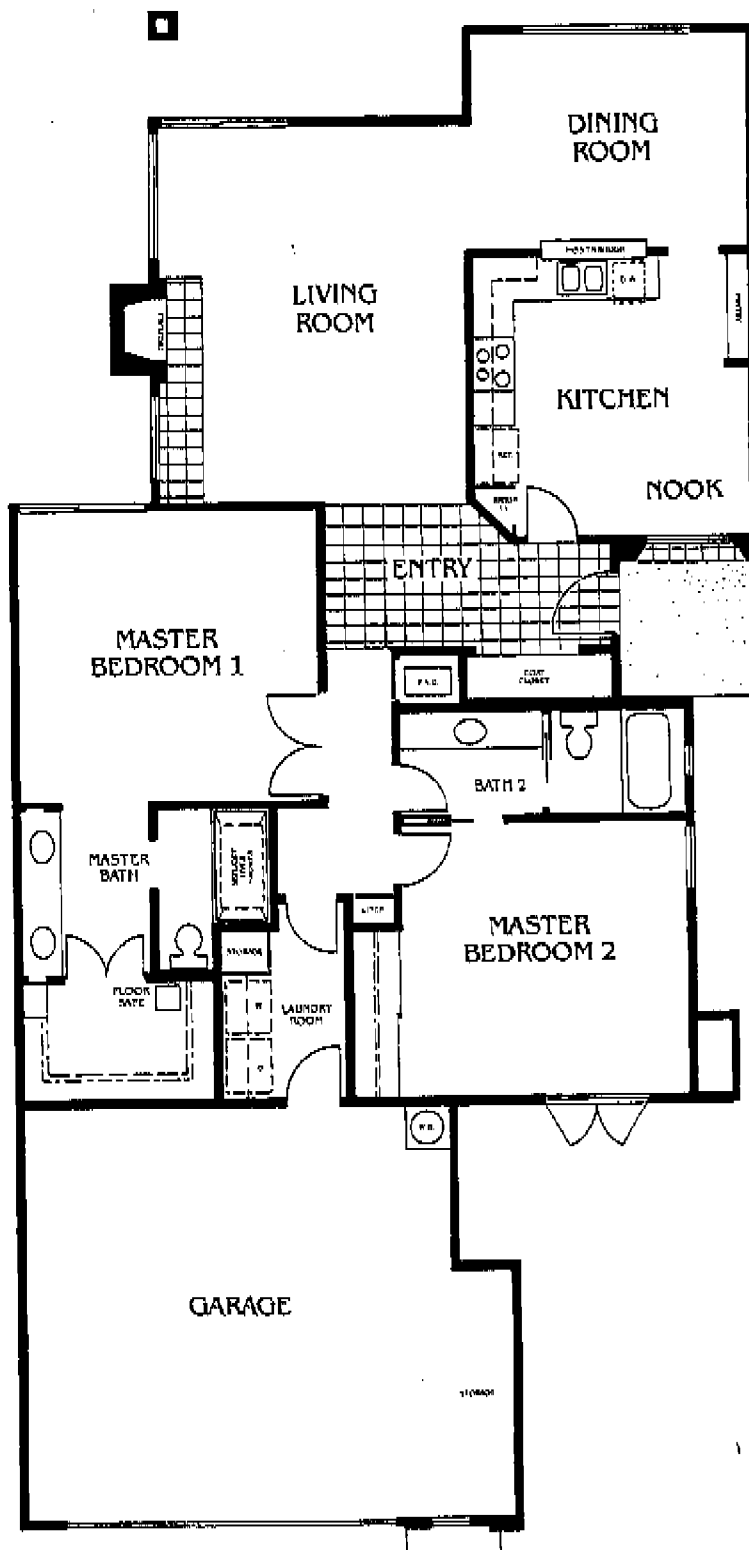
The angled entry opens to a spacious living and dining area where high vaulted ceilings and large windows let in plenty of light and scenery. A unique corner fireplace gives the living area a cozy touch. A roomy kitchen with a bay window and breakfast nook access the rear yard for easy outdoor entertaining. This spacious home offers a large master suite with skylit master bath and ample closet space. The extra bedroom or den has its own guest bath and interesting corner windows.





PLAN 3

 S A N T A B A R B A R A

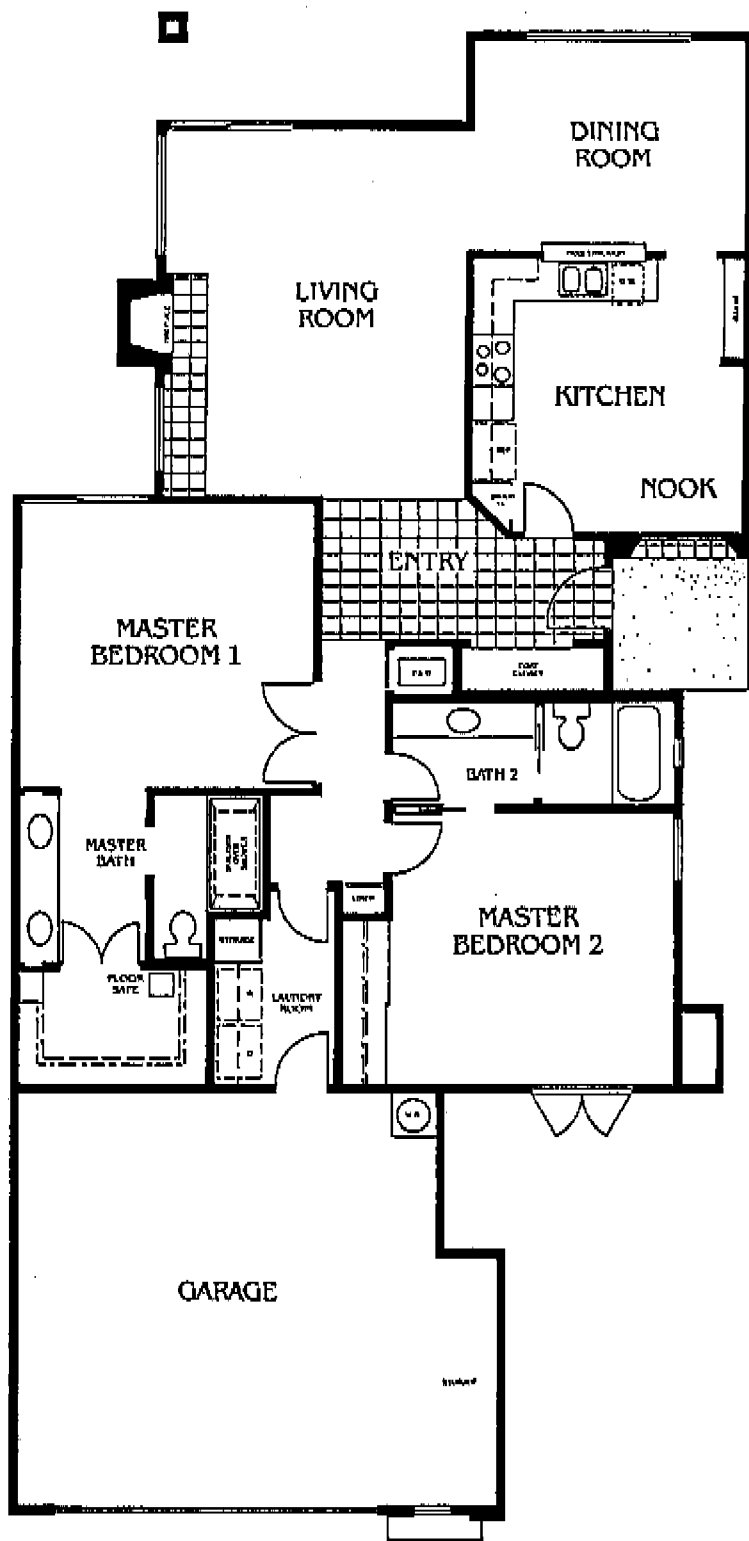


17678



Plan B. Two bedrooms, two baths, 1520 square feet.

A tiled entry leads to a sunny living room enhanced by wrap-around windows and a fireplace with full length brick hearth. The formal dining room opens to a comfortable kitchen and breakfast alcove. The two generous master suites have plenty of privacy and the master bath enjoys natural light through large skylights. The oversized two car garage provides ample storage or hobby space.



Plan B. Two bedrooms, two baths, 1520 square feet.

A tiled entry leads to a sunny living room enhanced by wrap-around windows and a fireplace with full length brick hearth. The formal dining room opens to a comfortable kitchen and breakfast alcove. The two generous master suites have plenty of privacy and the master bath enjoys natural light through large skylights. The oversized two car garage provides ample storage or hobby space.

Plan A. Two bedrooms, two baths, 1463 square feet.

The angled entry opens to a spacious living and dining area where high vaulted ceilings and large windows let in plenty of light and scenery. A unique corner fireplace gives the living area a cozy touch. A roomy kitchen with a bay window and breakfast nook access the rear yard for easy outdoor entertaining. This spacious home offers a large master suite with skylit master bath and ample closet space. The extra bedroom or den has its own guest bath and interesting corner windows.

