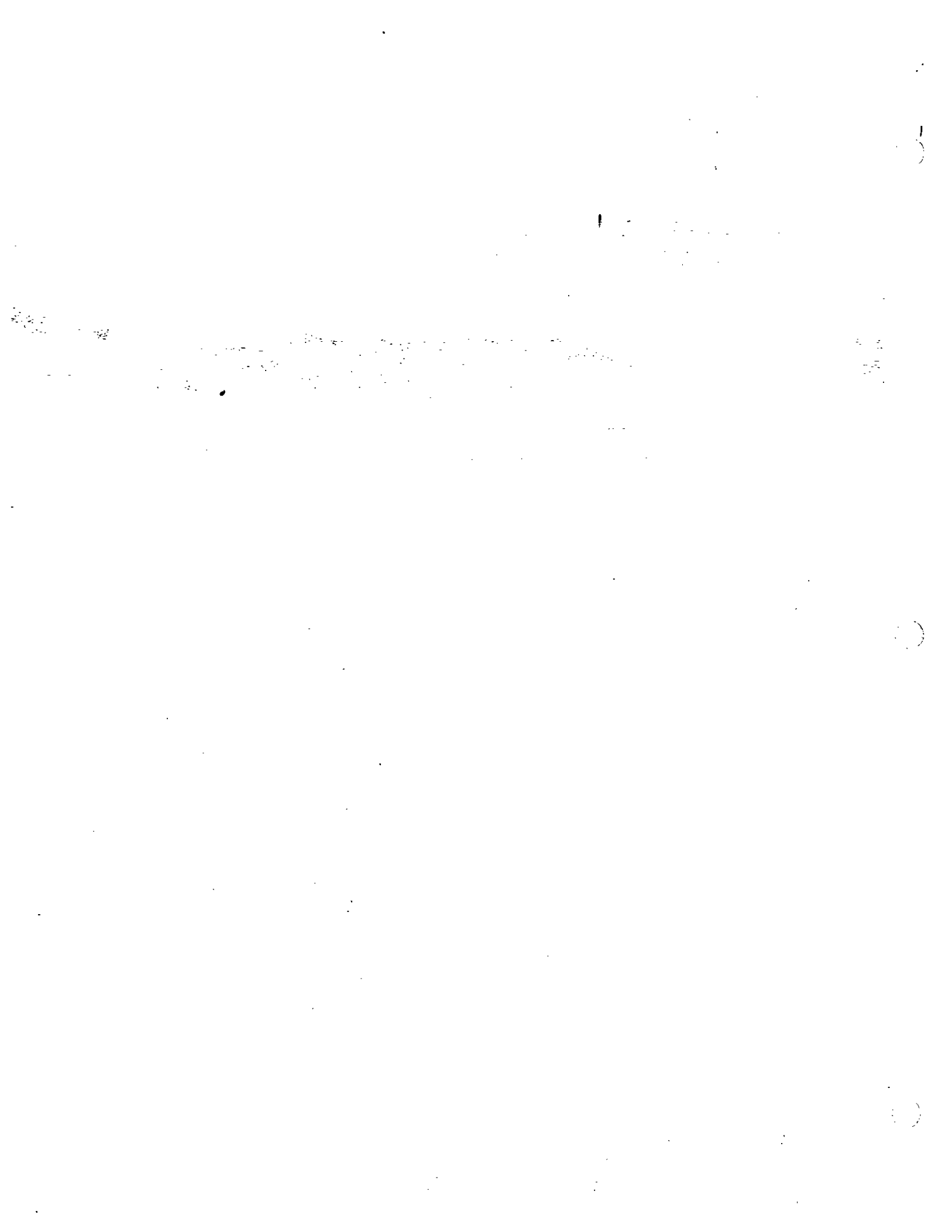


Chateau Village



Features

Information Deemed Accurate
But Not Guaranteed

Architectural Features

- French Mediterranean with keystone and quoining detail
- Custom-blended concrete tile roof
- Transomed and arched windows, some shutter detail
- Patio fencing
- Pot shelves and ornamental iron work

Elegant Living Areas

- Formal entry. Volume ceilings throughout
- Plush carpeting in choice of designer colors included in: Living Room, Dining Room, Master Suite and Dressing Area, Nook (Plan 4) secondary bedrooms, halls, and powder room
- Woodburning fireplace with gas log-lighter valve
- Rounded corners on interior walls
- Sliding tempered-glass doors to private outdoor areas (Plan 4 has French doors)
- Distinctive, elegant lighting fixtures and architecturally specified recessed lighting
- Quality vinyl floor covering included in Kitchen, Nook (Plans 2 & 3), and Bathrooms

Gourmet Kitchen

- Hand-set ceramic tile countertops and under cabinet fluorescent lighting
- Elegant, traditional white cabinetry with hidden hinges
- Gas range featuring self-cleaning oven, dishwasher and microwave
- Refrigerator space equipped with water line for ice-maker

Private Master Suite

- Spacious Master Bedroom
- Large wardrobe or walk-in closet
- Volume ceilings in some plans
- Private dressing area
- Mirrored wardrobe doors

Recreation and Landscape

- Public bike path
- Fitness center, pool, spa, and tennis court
- Professionally maintained landscaped areas
- Underground utilities

Options

(Available at additional cost)

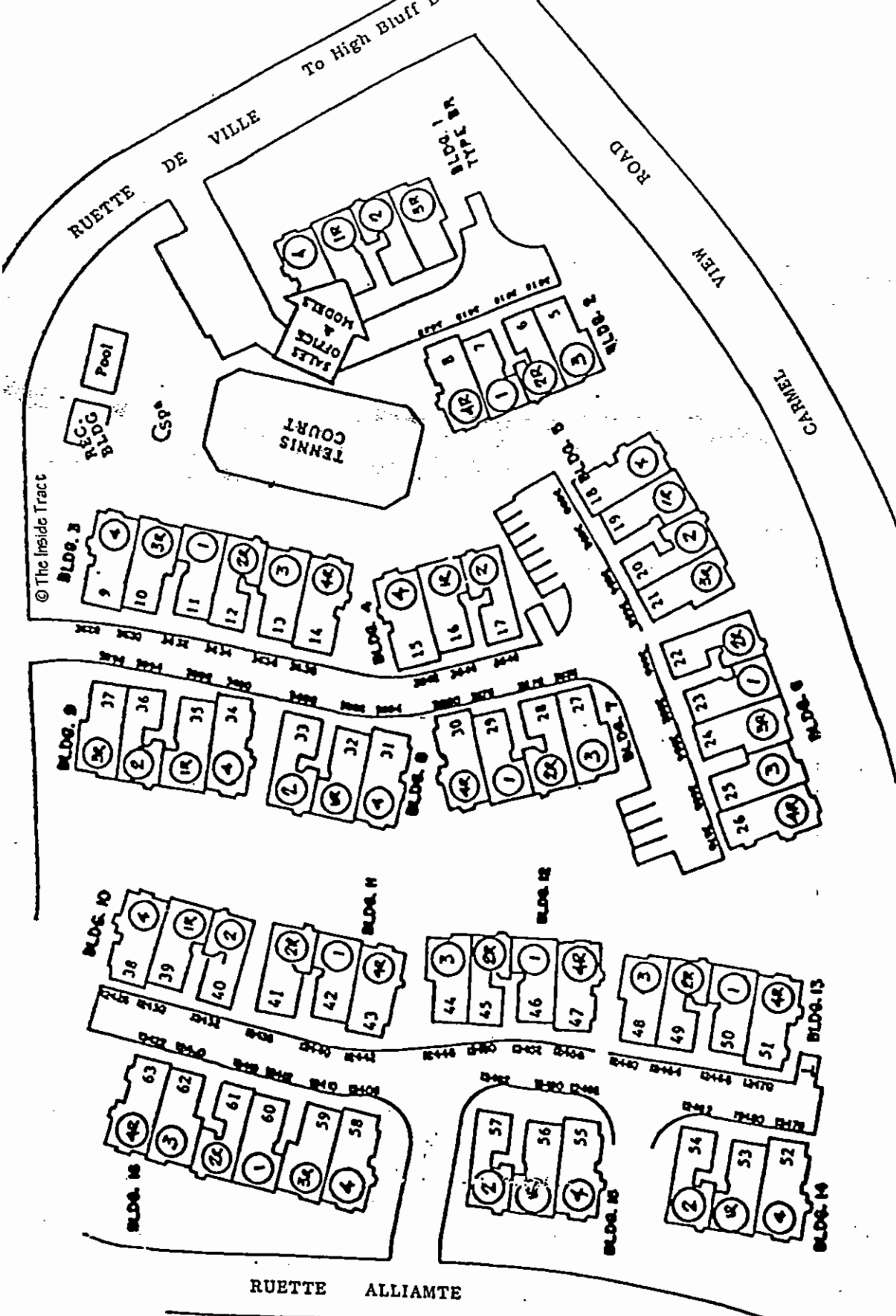
- Upgrade carpet and pad
- Upgrade hard-surface flooring
- Mirrored wardrobe doors at secondary bedrooms
- Tub enclosures
- Security system
- Air conditioning
- Refrigerator
- Washer/Dryer

Custom Features

- 220-v and gas service for clothes dryer
- Forced-air heating with set back thermostat
- Pre-wired for cable TV and telephone; security system, emergency alarm
- Smoke detector with warning buzzer and battery backup
- Automatic garage door opener with two controls, and exterior digital entry pad
- Weatherproof exterior electrical outlet
- Prepared for optional air conditioning

© The Inside Tract

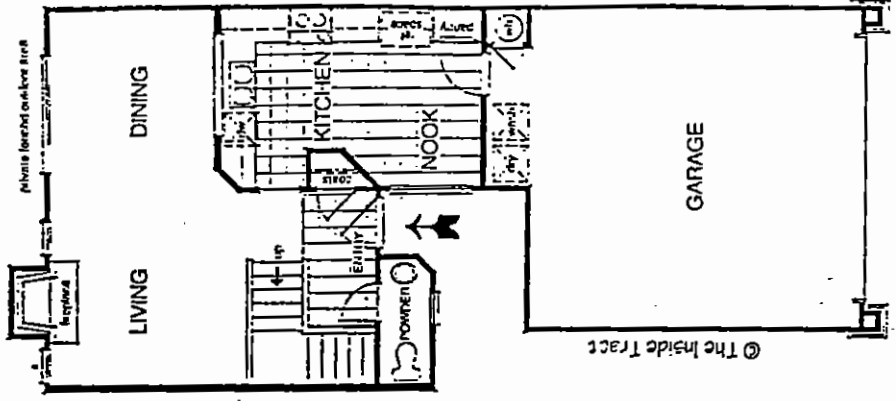
CHATEAU VILLAGE IN D.M.H.



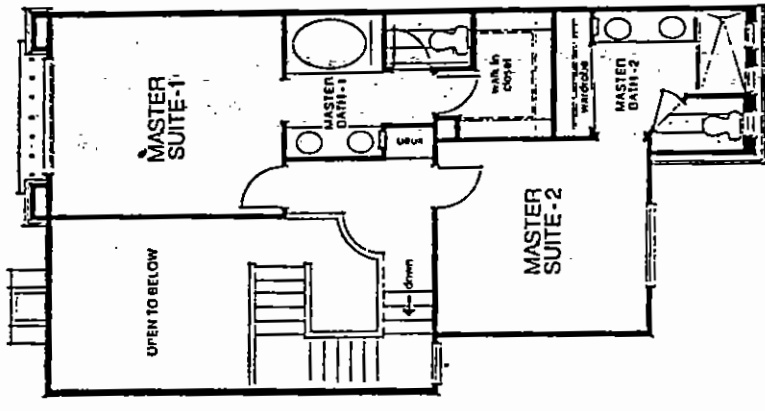
CHATEAU VILLAGE IN D.M.H.

CAUTION

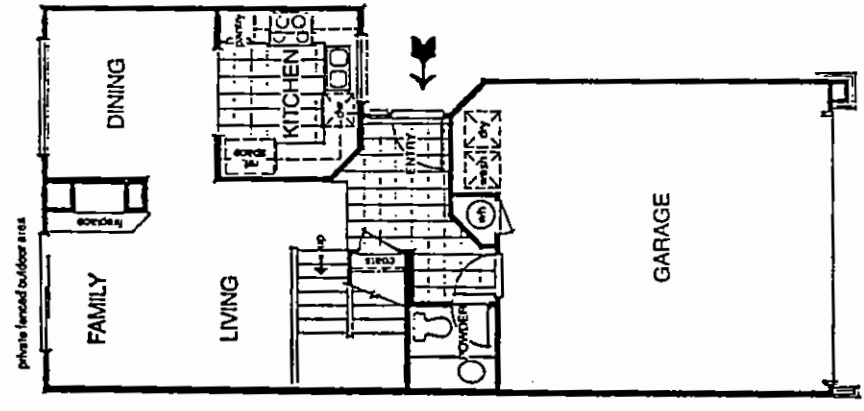
This site plan may have been changed by the builder and there may be more phascs that are missing from our files. If you find an error or have more info please call us. Thank you.



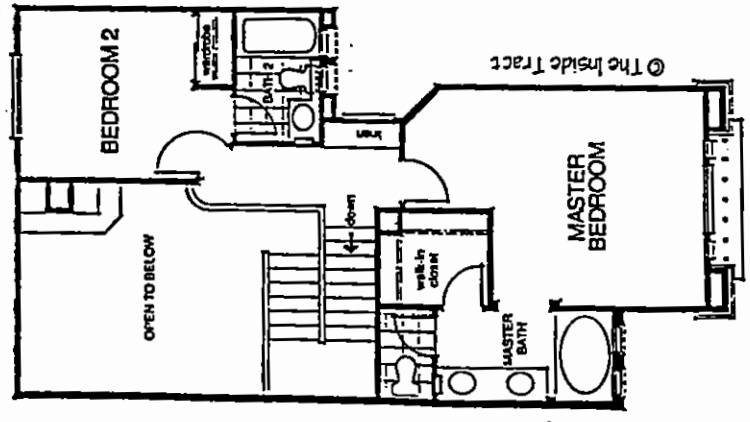
FIRST FLOOR
See notes tab for unit units



SECOND FLOOR
*Window condition varies per building



FIRST FLOOR



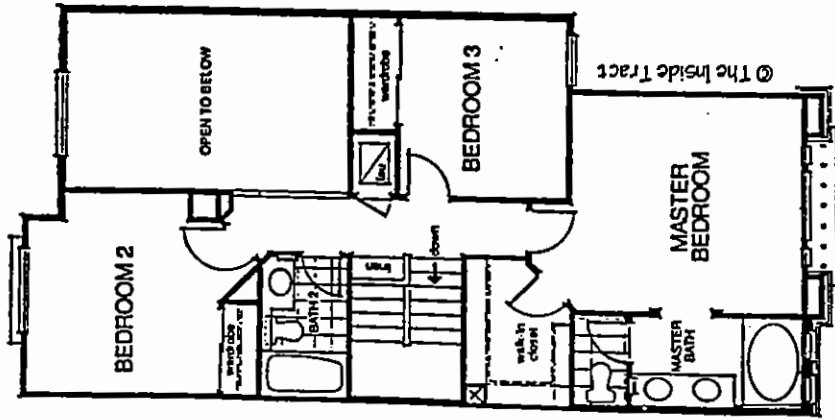
SECOND FLOOR

CHATEAU VILLAGE IN D.M.H.

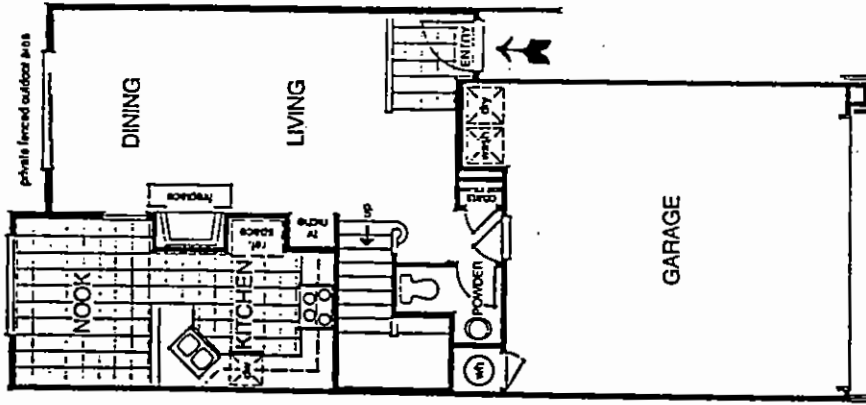
Model: 2-BORDEAUX
Area: EDM B/T Code: CHTV
Approx SQ/FT: 1225
©The Inside Tract

CHATEAU VILLAGE IN D.M.H.

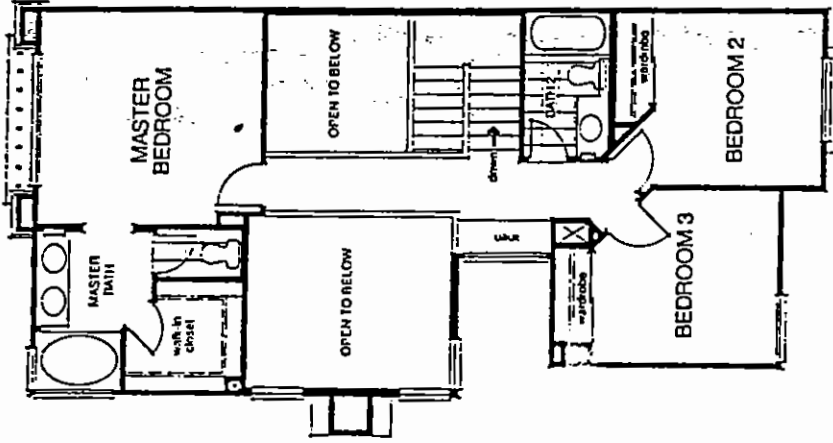
Model: 1-PARISIAN
Area: EDM B/T Code: CHTV
Approx SQ/FT: 1151
©The Inside Tract



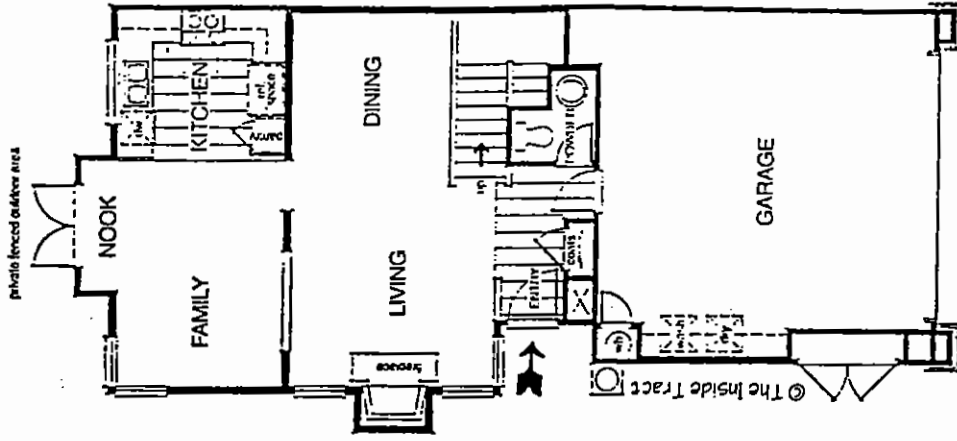
SECOND FLOOR



FIRST FLOOR
See reverse side for end units



SECOND FLOOR



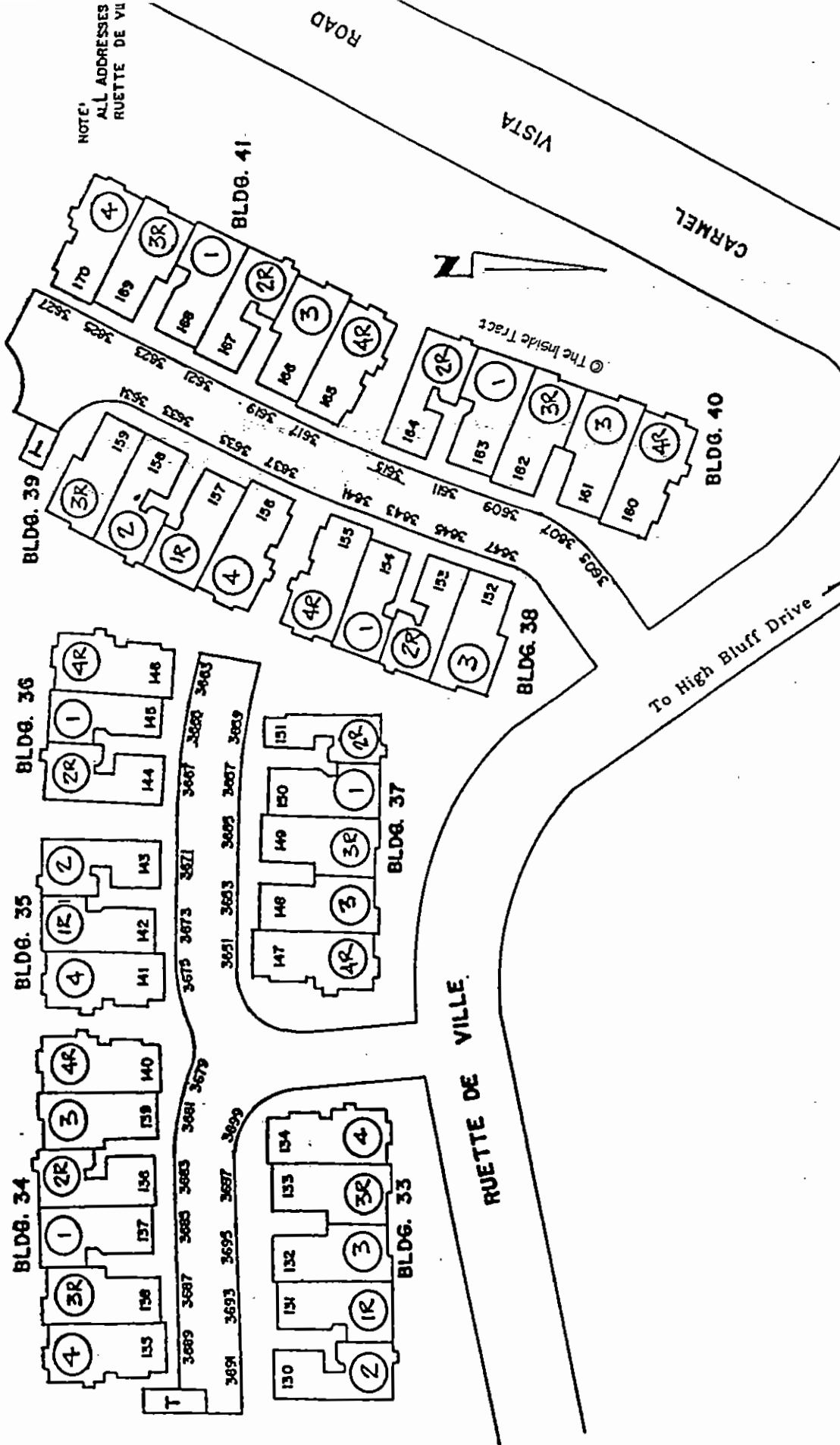
FIRST FLOOR

CHATEAU VILLAGE IN D.M.H.

Model: 3 - PROVENCE
 Area: EDM B/T Code: CHTV
 Approx SQ/FT: 1397
 ©The Inside Tract

CHATEAU VILLAGE IN D.M.H.

Model: 4 - ST. TROPEZ
 Area: EDM B/T Code: CHTV
 Approx SQ/FT: 1432
 ©The Inside Tract



NOTE:
ALL ADDRESSES
RUETTE DE VILLE

CAUTION

This site plan may have been changed by the builder and there may be more phases that are missing from our files. If you find an error or have more info, please call us. Thank you.

CHATEAU VILLAGE IN D.M.H.

