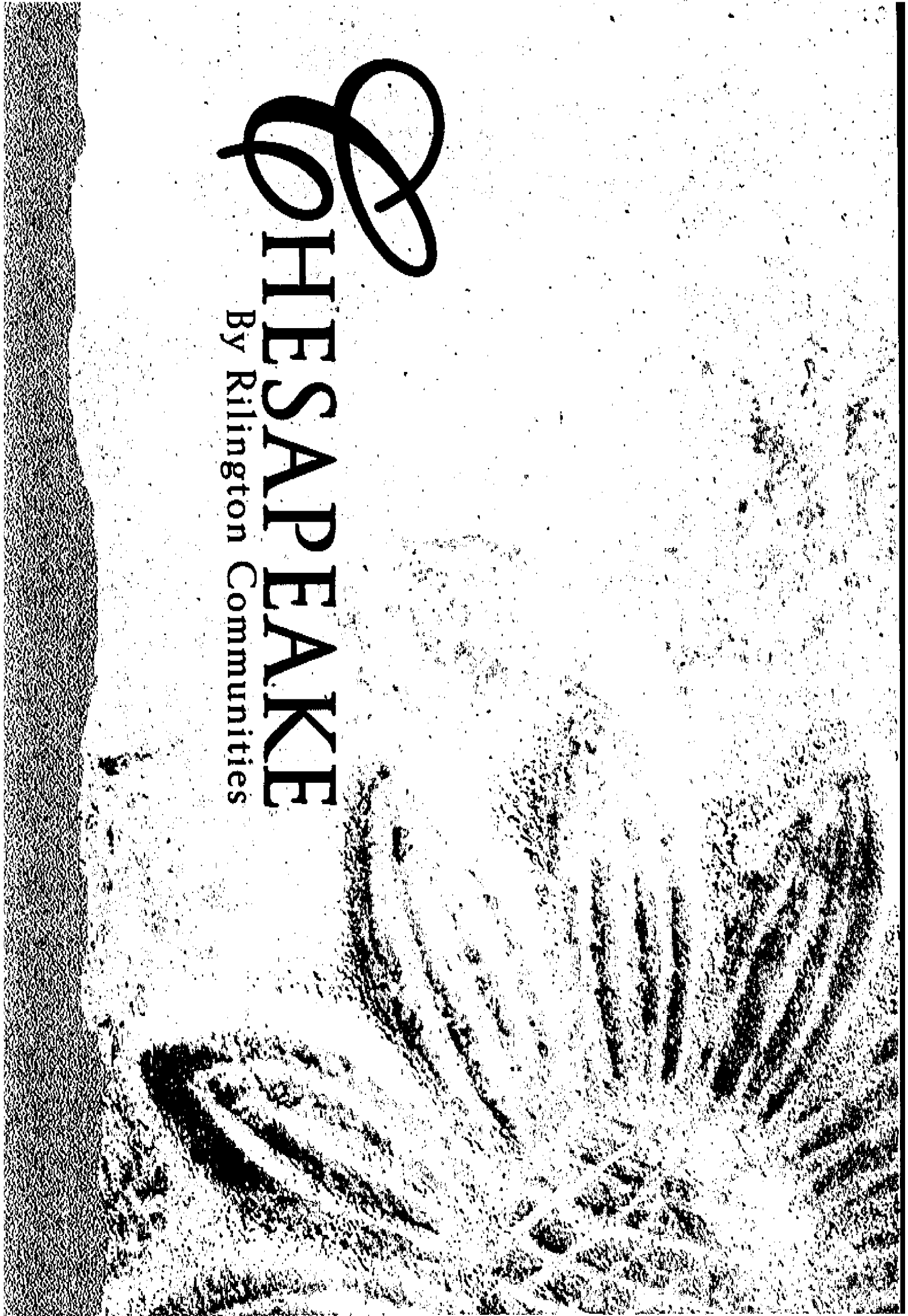




SHE SAPAKE

By Rilmington Communities



Chesapeake

Where dreams grow big

Surrounded by the coastal hills and valleys of San Marcos, Chesapeake offers the intimate friendliness of a small, country neighborhood. However, Chesapeake is also at the crossroads to a myriad of exciting opportunities. Just a short drive away are the beaches and attractions of San Diego County and just minutes away are great parks, golf courses, shopping centers, entertainment and restaurants.

The pastoral charm of the area is reflected in the graceful design of the community. The residential architecture and exterior detailing exemplify Rlington Communities commitment to aesthetic excellence and craftsmanship.

With only 55 homes, Chesapeake possesses the qualities of a small family neighborhood. The homes are large with generous yards. The floor plans are modern and open and include a host of features such as elegant baths, island kitchens and handsome fireplaces. All homes are within walking distance of a community playground that is ideal for toddlers and children. Many homes have views of the surrounding countryside; the open fields provide excellent outlets for adventurous youngsters.

Chesapeake is served by the San Marcos Unified School District, renowned for the quality of its schools. Nearby is Palomar Community College and California State University of San Marcos. The community enjoys easy access to major transportation corridors.

Rlington Communities welcomes you to Chesapeake. As a family owned and operated building company, Rlington Communities takes great pride in the high levels of personal involvement that go into every community and home they build. Each detail is carefully considered, from designer touches and amenities to pricing and financing. To give you piece of mind, Rlington Communities will be with you every step of the way.

Rlington Communities offers decades of experience in all facets of the building industry, providing a high degree of knowledge and resources that help make Rlington one of the most respected homebuilders in Southern California. Company president Mickie Riley has been involved in the development of more than a billion dollars of residential property over the past 30 years and has an outstanding reputation for integrity and quality.

Every Rlington neighborhood is built with absolute pride to offer you years of comfort, pleasure and value in your new Rlington home.

Features

DISTINCTIVE EXTERIORS

- Modern architectural design
- Stylish exterior accents & detail including designer selected color palates
- Fire retardant concrete tile roofs
- Classic & durable stucco finish
- Impressive raised panel entry door with Schlage® hardware
- Three-car tandem drywall finished garages
- Long lasting concrete driveways
- Dual-glazed energy-efficient vinyl windows
- Side and rear-yard fencing
- Electrical outlets in front and rear patios
- Ready for gas barbecue outlet
- Recessed lighting above garage doors
- Charming covered entries

LUXURY BATHS

- Copper electrical wiring
- Bulbs installed in all light fixtures for move-in convenience
- Customizing options and accessories
- Elegant formal dining area (per plan)

ENERGY SAVING FEATURES

- All homes meet or exceed current Title 24 energy efficiency codes and specifications
- Energy-saving large capacity water heater
- Weather stripping around exterior doors and windows
- Automatic set-back thermostat
- Pilot-less electrical ignition on furnace and gas range
- Economical natural gas-forced air heating
- Water-saving bath fixtures
- Underground utilities

MASTER SUITE SOPHISTICATION

- Elegant Roman tub with temperature balancing valve
- Provocative separate glass shower
- Rich ceramic tile countertops
- Beautiful designer maple wood cabinetry
- Designer Moen widespread lever-handled faucets with chrome finish
- Spacious walk-in closets

HEAVENLY KITCHENS

- Mortar-set 6 x6 ceramic tile counters
- No-wax easy-care vinyl floors
- Masterfully crafted maple wood cabinetry
- Full complement of GE white-on-white or black appliances
- Convenient lighted pantry (per plan)
- Spacious kitchen island
- Recessed ceiling lighting
- Handsome Moen chrome finish fixtures
- Heavy duty garbage disposal
- Plumbed for icemaker

TASTEFUL INTERIORS

- Elegant ceramic tile entryway
- Handsome wood-burning fireplace
- Dramatic entertainment niche
- Classic raised panel interior doors
- Custom textured walls and ceilings
- Rounded drywall corners
- Easy access laundry room & cabinets
- Linen closets & extra storage
- Designer styled light fixtures
- Up graded 21st century security and sound systems
- Smoke detectors

NEIGHBORHOOD APPEAL

- Intimate secluded community
- Back country and open space views on selected lots
- Spacious lots – great for pool & kids
- Mini-playground for children
- Close to recreation activities
- Easy freeway access



11000 760 591 1711 66 366 501 0215 www.hillcountry.com

Lot 14 **Plan 2R** **\$ 647,990**
 Structured Universal Network, Fireplace at Living Room, Security System, Maple
 (Cabinets 028 and Door Style C23)

Lot 15 **Plan 3R** **\$ 664,990**
 Structured Universal Network, Security System, Maple (Cabinets 011, Door Style C23
 and (2) lights at Dining Room Niche w switch

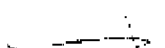
Lot 16 **Plan 2R** **\$ 642,990**
 Structured Universal Network, Fireplace at Living Room, Security System, Maple
 (Cabinets 028 and Door Style C23)

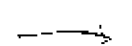
Lot 17 **Plan 3** **\$ 686,990**
 Structured Universal Network, Security System, Maple (Cabinets 011, Door Style C23
 and (2) lights at Dining Room Niche w switch

Lot 18 **Plan 1** **\$ 669,990**
 Structured Universal Network, Security System, Maple (Cabinets 011, Door Style C23
 and (2) lights at Dining Room Niche w switch

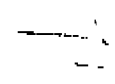


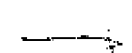
Phone: (909) 591-7111 Fax: (909) 591-6215 www.prlh.com

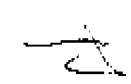
Lot 19  Plan 3RC S 719,990
 Structured Universal Network, Security System, Maple Cabinets 011, Door Style C23
 and (2) lights at Dining Room Niche w switch

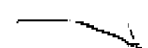
Lot 20  Plan 2 S 700,990
 Structured Universal Network, Fireplace at Living Room, Security System, Maple
 Cabinets 028 and Door Style C23

Lot 21 Plan 3 S 702,990
 Structured Universal Network, Security System, Maple Cabinets 011, Door Style C23
 and (2) lights at Dining Room Niche w switch

Lot 22  Plan 1 S 664,990
 Structured Universal Network, Security System, Maple Cabinets 011, Door Style C23
 and (2) lights at Dining Room Niche w switch

Lot 23  Plan 2 S 677,990
 Structured Universal Network, Fireplace at Living Room, Security System, Maple
 Cabinets 028 and Door Style C23

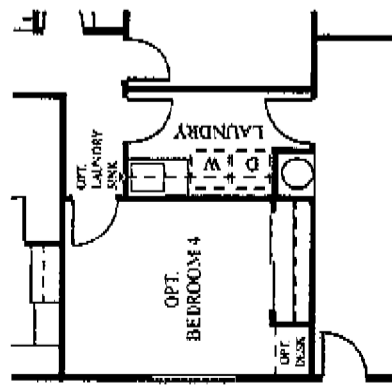
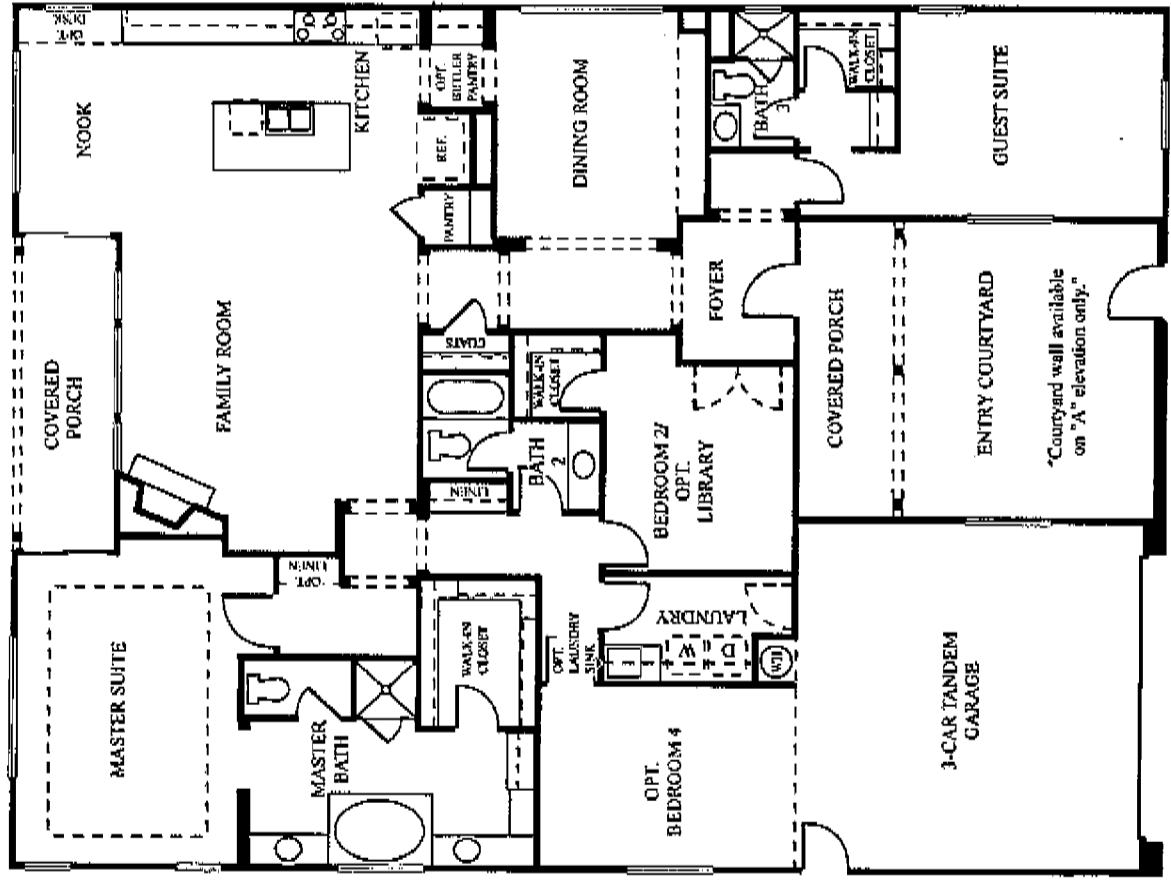
Lot 24  Plan 1 S 645,990
 Structured Universal Network, Security System, Maple Cabinets 011, Door Style C23
 and (2) lights at Dining Room Niche w switch

Lot 25  Plan 3 S 683,990
 Structured Universal Network, Security System, Maple Cabinets 011, Door Style C23
 and (2) lights at Dining Room Niche w switch



Residence One

• 2,266 to 2,430 Square Feet • 3 Bedrooms • 3 Baths • Guest Suite • 3 Car Tandem Garage • Optional Library • Optional Library • Optional Bedroom 4

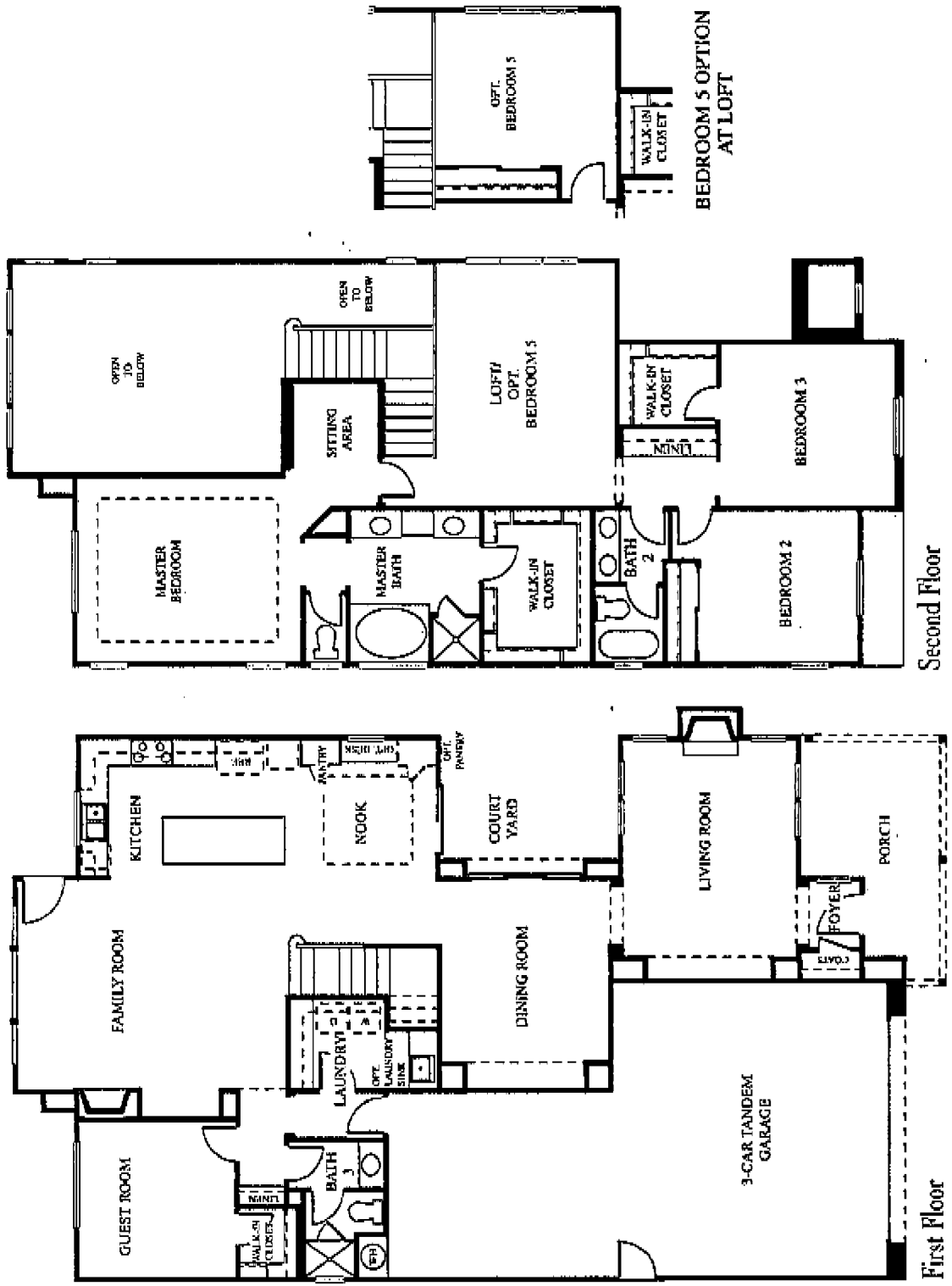


BEDROOM 4 OPTION AT GARAGE



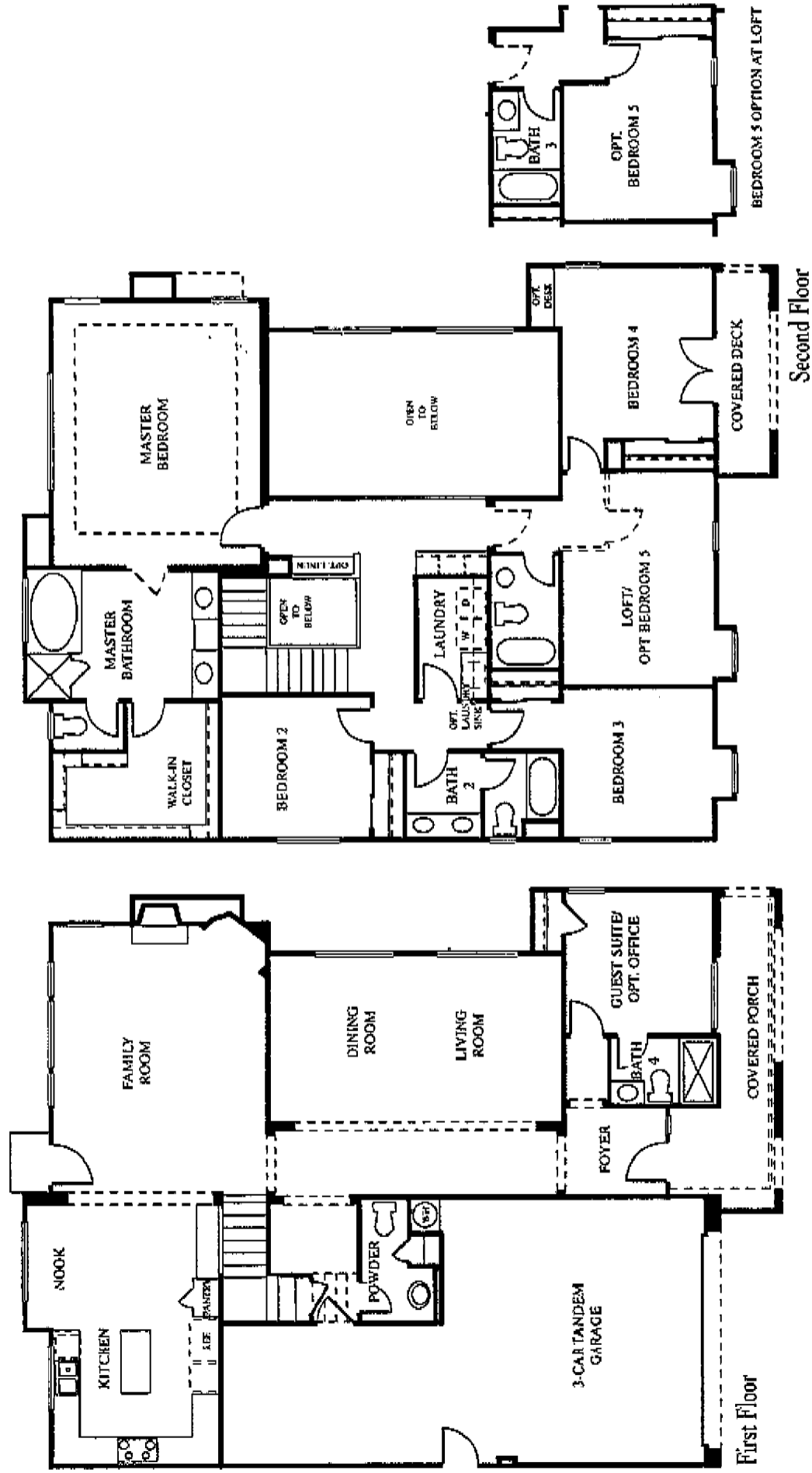
Residence Two

• 2,820 Square Feet • 4 Bedrooms • 3 Baths • Loft • Master Sitting Area • 3 Car Tandem Garage • Optional Bedroom 5



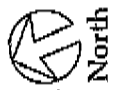
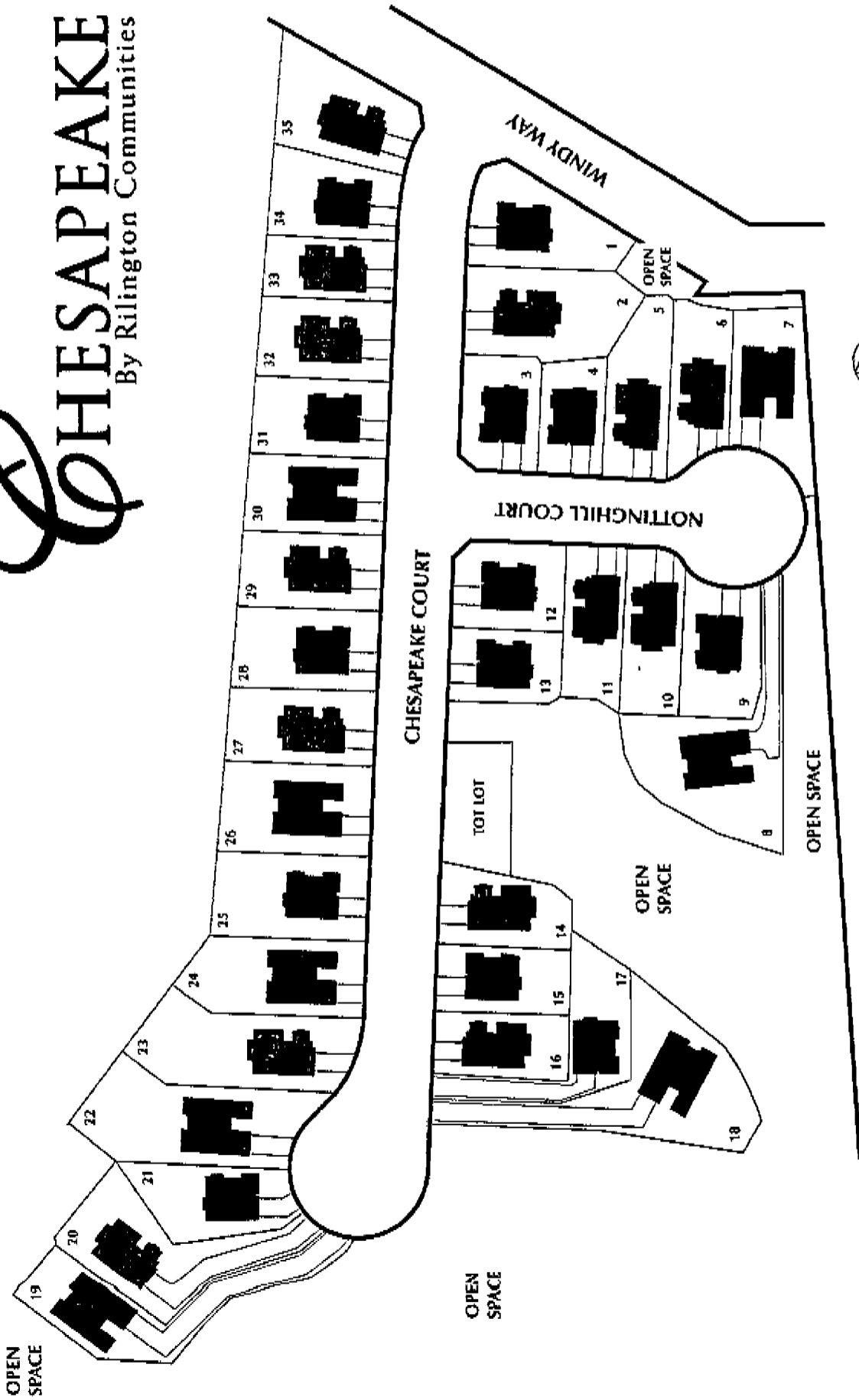
Residence Three

• 3,194 to 3,227 Square Feet • 3 Bedrooms • 4 1/2 Baths • Loft • Guest Suite • 3 Car Tandem Garage • Optional Bedroom 5

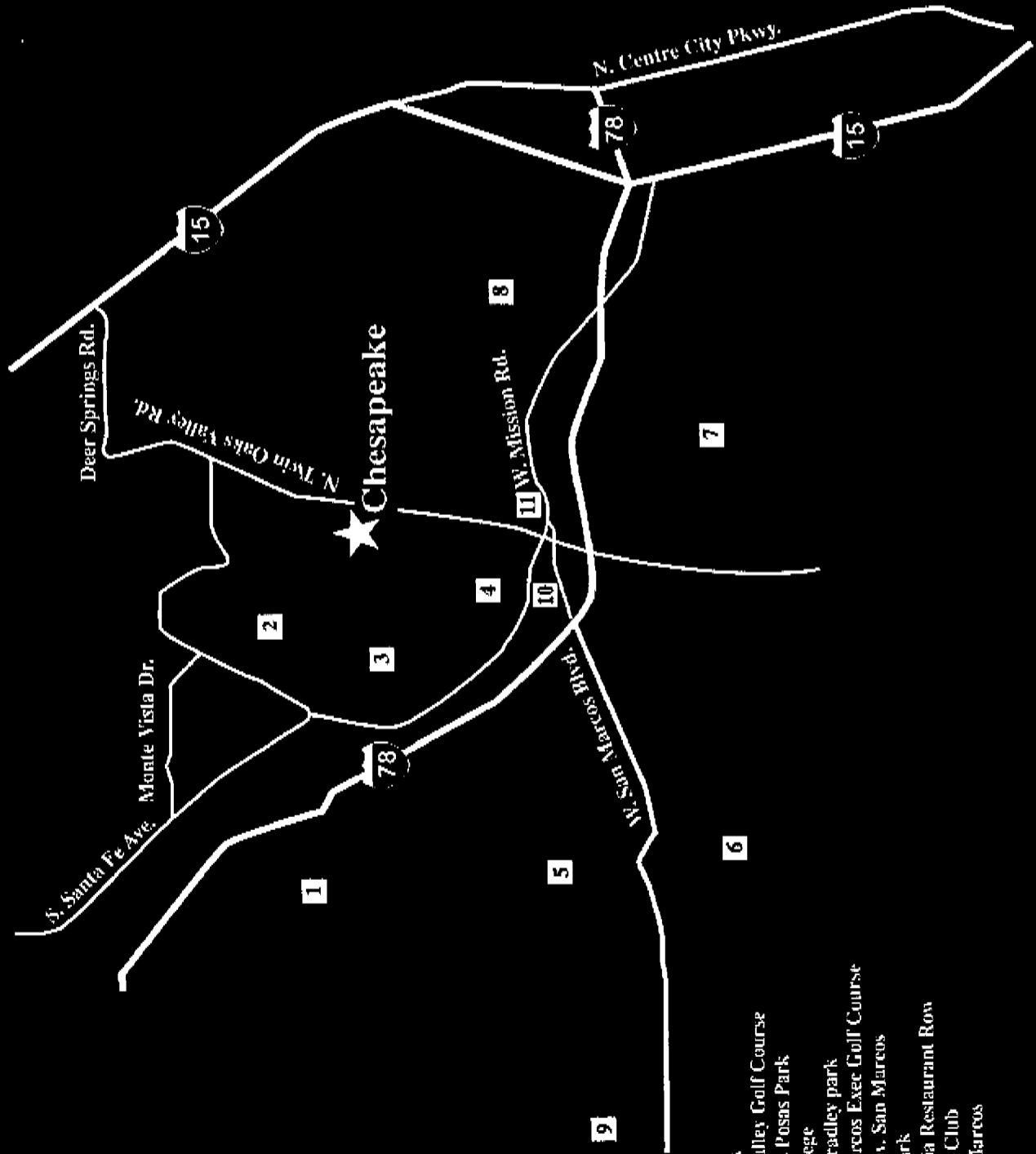


CHESAPEAKE

By Rilmington Communities



RILINGTON COMMUNITIES



Map Not To Scale

- 1. Tinbodo Park
- 2. Twin Oaks Valley Golf Course
- 3. Cerro De Las Posas Park
- 4. Palomar College
- 5. William B. Bradley park
- 6. Lake San Marcos Exec Golf Course
- 7. Cal State Univ. San Marcos
- 8. Woodland Park
- 9. Old California Restaurant Row
- 10. Boys & Girls Club
- 11. City of San Marcos

