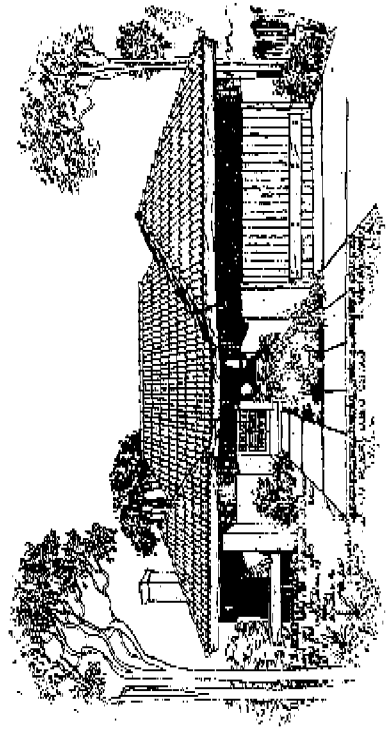


CLEMENTE

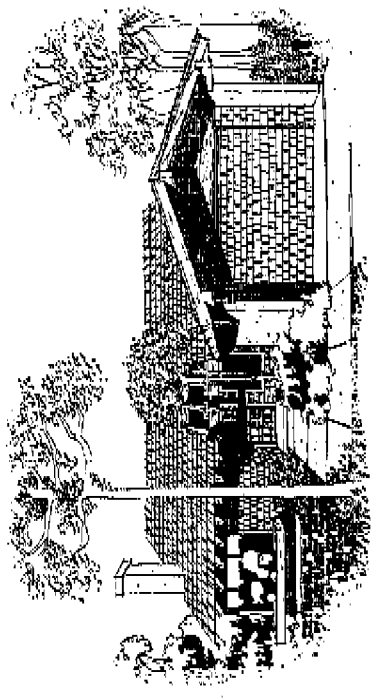
7603-A

All the warmth of a Mediterranean coastal villa is built into this home of distinction. Double entry doors. Dark wood trim bordering a roof of brightly colored tile. A textured stucco exterior and expansive use of glass. And lining the walkway, a sunny planting area to show guests you know as much about gardening as you do about choosing a home.



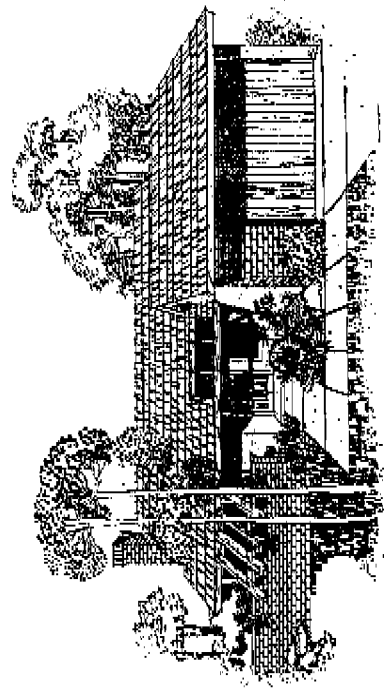
7603-B

This is your country place, away from the madding crowd. Secluded, peaceful and natural. Exposed beams extend from a shake shingle roof to create the open feeling you need. Side walls of natural shingle lend to the country air. An outside window ledge gives you plenty of room for favorite plants. Get away from it all, beautifully.



7603-C

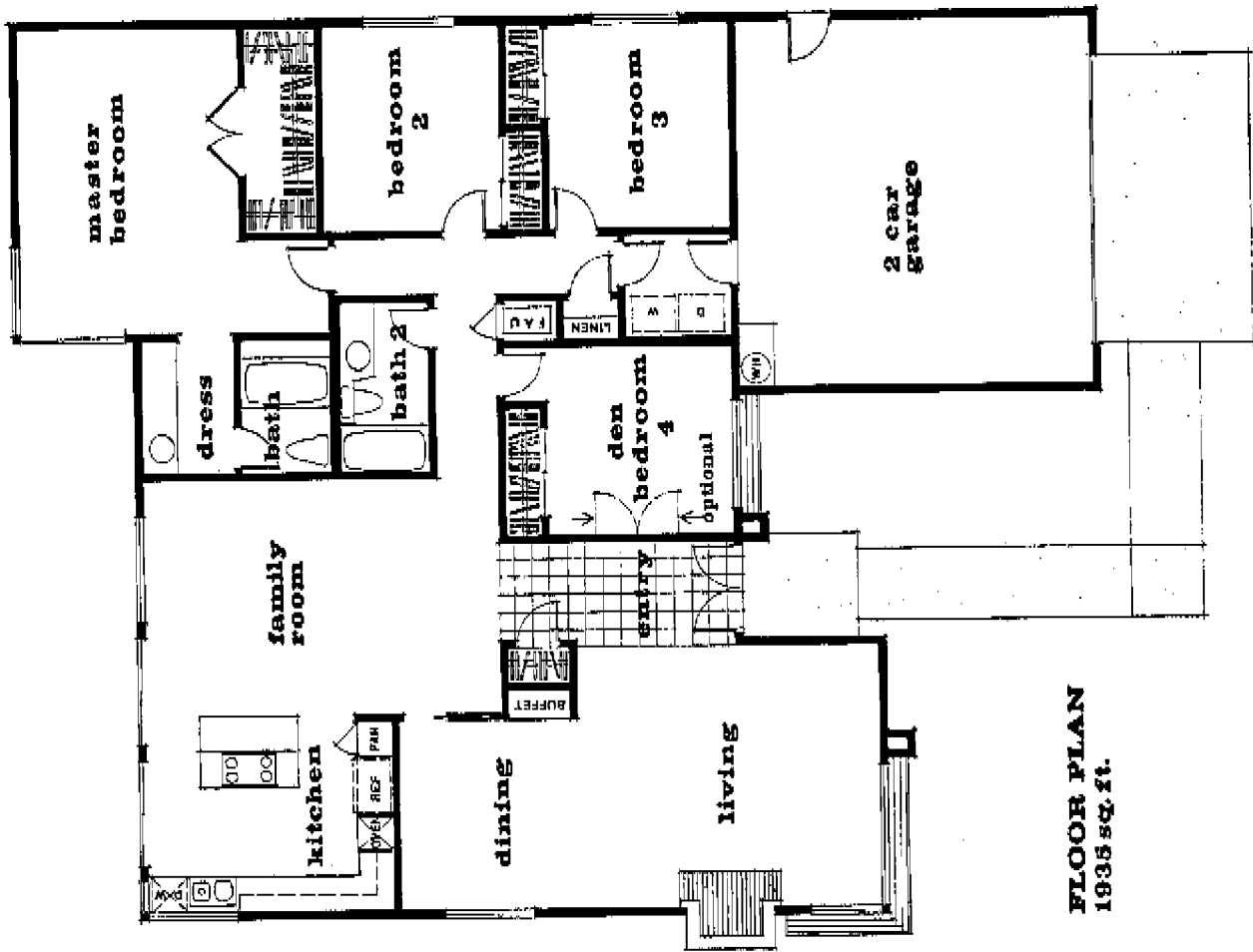
The cosmopolitan selection. To turn you from a party-goer to a party-giver. Exposed beams slope from a shake shingle roof all the way to a brick privacy wall. Look out your living room window . . . to an informal patio or another lovely garden. This is a home for entertainers who love where they live and like to share it.



Gatewood **CLEMENTE** **7603**

Four bedrooms and 2 baths. This home is as perfect to live in as it is to entertain in. The spacious dining room has a built-in buffet if you're going formal. And the kitchen's close to the family room if what you like best is informality. An island kitchen with butcher block counter top adds style and grace to a very busy area. Small groups, big crowds or just a family gathering, this home is a reflection of your impeccable taste. 1,935 square feet of space to do whatever you like best.

Due to changes and improvements resulting from Avco Community Developers, Inc., continuing research and development program, we reserve the right to alter price, product or design without notice or obligation prior to purchase.



FLOOR PLAN
1935 sq. ft.

