

The site itself is unique. It is an island, situated high on a hillside, surrounded by open space. Views to surrounding areas are spectacular."

Jack Nakawatase
Landscape Architect



Collage was created for an interesting array of people, each with different needs.

Perfect for those who can't wait to get going. As well as those who can't wait to get home. Singles who are just starting out. Couples who

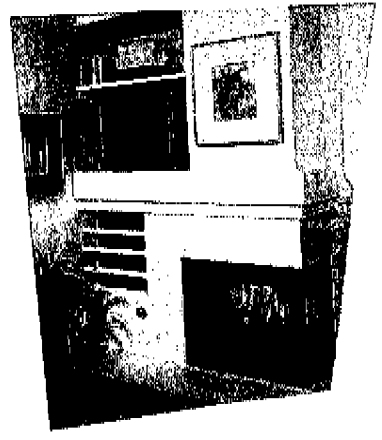
now have time to travel the world. Families. And plenty of others in between.

You'll find it on a prime site of Carmel Mountain Ranch. Freeway close, but looking out on quiet hills. Where you can easily stroll over to a luxurious clubhouse for brunch. Where a putting green is just steps away. And where shopping, a post office, hotel and exceptional schools – Poway schools – are all part of the picture.

Layered onto this perfect hilltop is a series of European style hamlets in different, rich hues. Neighborhoods of contrasts and intriguing details. An eclectic mixture of convenient flats,

"In European hilltop villages, each home is given its own sense of individuality. We echoed this tradition by introducing a variety of architectural details... such as dormer windows, window seats and varying roof heights throughout. All designed and arranged to turn the overall massing of the buildings into a collage of eye-catching accents."

Donna Flynn, Architect



Collage

DEC.07'2007 14:08 8584870982

PRUDENTIAL CAL

#1400 P.002/005

Of course comes from And g the

Well! Just good ok

With the wind ask and a little power will you'll wake up

Then I look at the hat and realize it's only four years away from getting her child's license for her

After the first Mystery Weekend we were hooked.

If only a vic. Maybe with a piece

Collage



"These homes have an energizing effect. They're a fun place to retreat, play, renew and entertain. Each plan has a distinct personality and yet each lends itself to many individual styles - traditional, contemporary, and classic."
Jan Willeford,
Interior Designer

townhomes, and two-story residences with customized upper floors. Each one enjoying direct access to its own private garage.

Within this vision you'll pick out the vibrant shades of an active life. With a sparkling pool to splash in. Jogging trails that inspire you to exercise. Meandering walkways to explore and enjoy. The forever challenging, rewarding and frustrating game of golf – on a championship course. Play areas where kids can freely kick up their heels. And a classy recreational center.

And finally, you'll see yourself. Creating a living space as you envision it. Personalizing beyond what you ever thought possible in condominium living.

It is all here. Layers upon layers of colors, shapes, expressions, ideas, and life. Not just a collection of elements, but the perfect synthesis of them.

The essence of a true collage.



"We worked closely with a very gifted architect who provided a wonderful canvas for color application. As a result, unlike so many other condominiums, Collage has the distinction of seeming semi custom, due to the changing building and roof lines."
Miriam Tate, Designer
Exterior Colorations

What has machine shoes?
 The paper cutter, hand or the
 staple line answering machine?

What wakes your face
 to power walking up this hill,
 it'll wake up. Hehehe, hie

What wakes your face
 to power walking up this hill,
 it'll wake up. Hehehe, hie

We celebrated that night
 at the Clubhouse over lobster
 and this terrific Chickama

A huge music fountain in the middle
 of this complex. It wasn't really
 like I thought. I mean it was a really
 good idea.

Then He
 shoes or
 gets

collage
 AT CARMEL MOUNTAIN RANCH

11905 TIVOLI PARK ROW, SAN DIEGO, CA 92128
 (619)487-9274

Of course, the best cooking
 comes from experimentation.
 And guess who's called
 the experiments?

Are you too old to
 What if you're
 39?
 ages?

de for
 scope.

As I think raising
 quality you
 the Fall

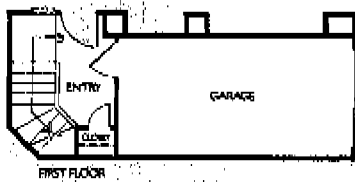
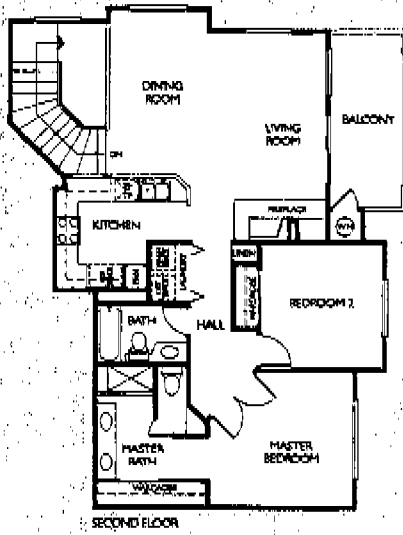
Plan One - 1096 sq. ft.



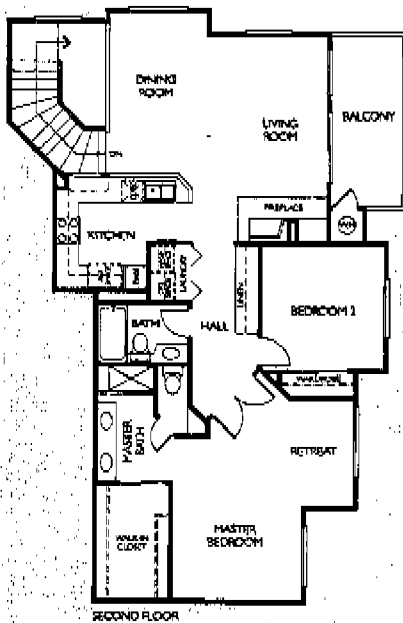
ENCORE

The perfect springboard for an active life. Maximum luxury and style, with only a minimum of upkeep. Leaving you free to watch the game in the optional den, enjoy the fresh air on the large entertainment balcony, or stroll up the street to the putting green.

ONE STORY / TWO BEDROOMS / TWO FULL BATHS / DINING ROOM / OPTIONAL DEN OR OFFICE/WOOD-BURNING FIREPLACE / BUILT-IN MEDIA NICHE / MIRRORED WARDROBE DOORS / DIRECT ACCESS FROM ENCLOSED SINGLE-CAR GARAGE / LARGE ENTERTAINMENT BALCONY.



ALTERNATE PLAN ONE 675xRULING 1242 SQ. FT.



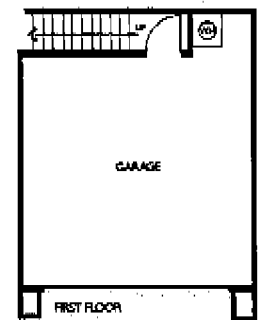
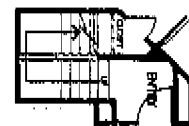
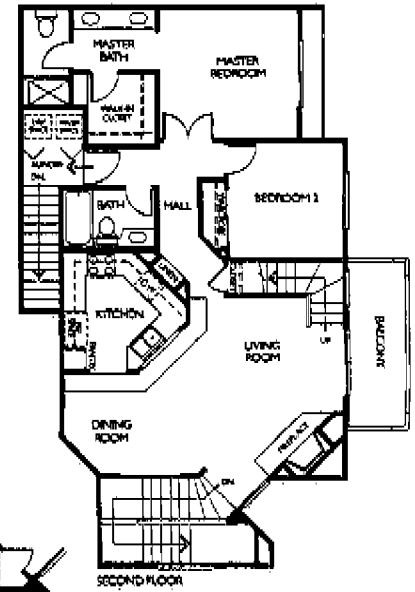
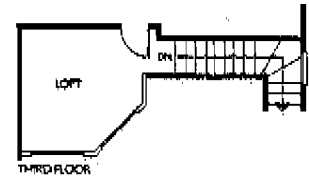
Plan Three - 1373 sq. ft.



ENCORE

There's a feeling of drama here. With its niche at the entry stairs, its 20-foot dining room ceiling and its private loft above the living room. An exceptionally designed residence that is bound to get rave review from all your guests. And captivate your own imagination, as well.

TWO STORIES / TWO BEDROOMS / LOFT / TWO FULL BATHS / DINING ROOM / CORNER WOOD-BURNING FIREPLACE / OPEN-DESIGN KITCHEN WITH SERVING BAR / INTERIOR LAUNDRY ROOM / DIRECT ENTRY FROM ENCLOSED TWO-CAR GARAGE / SPACIOUS ENTERTAINMENT BALCONY.



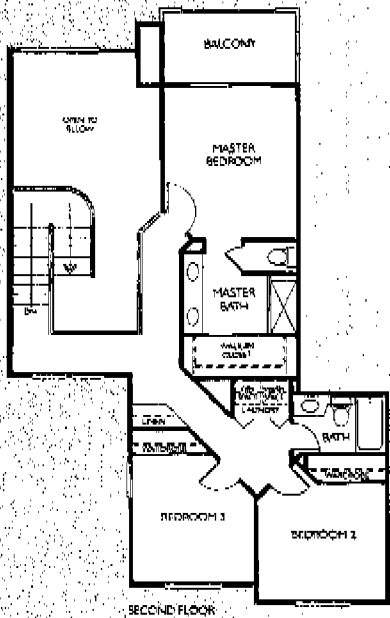


ambrosia

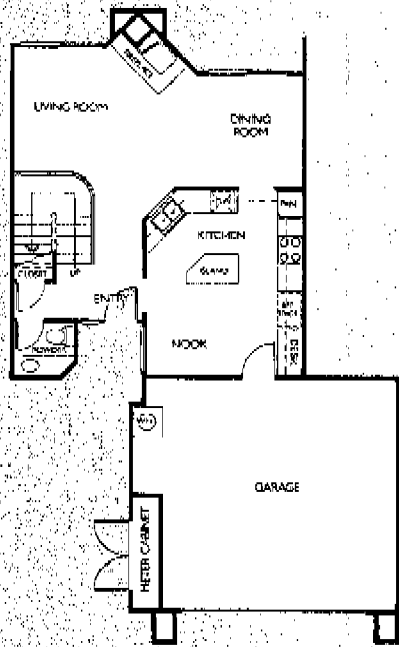
Welcome home. To a friendly kitchen with an island, a work desk and a sunny breakfast nook. A powder room downstairs in addition to two baths upstairs. A

tion to two baths upstairs. A beautifully curving staircase. And a landing full of interesting windows. Just add a family and you have it all.

TWO STORIES / THREE BEDROOMS / WOOD-BURNING FIREPLACE / TWO FULL BATHS PLUS POWDER ROOM / DINING ROOM / ISLAND KITCHEN WITH BREAKFAST NOOK, WORK DESK AND SERVING BAR / INTERIOR LAUNDRY / MASTER WALK-IN CLOSET / DIRECT ENTRY FROM ENCLOSED TWO-CAR GARAGE / ENCLOSED PATIO WITH STUCCO WALLS / MASTER SUITE BALCONY.



SECOND FLOOR



FIRST FLOOR

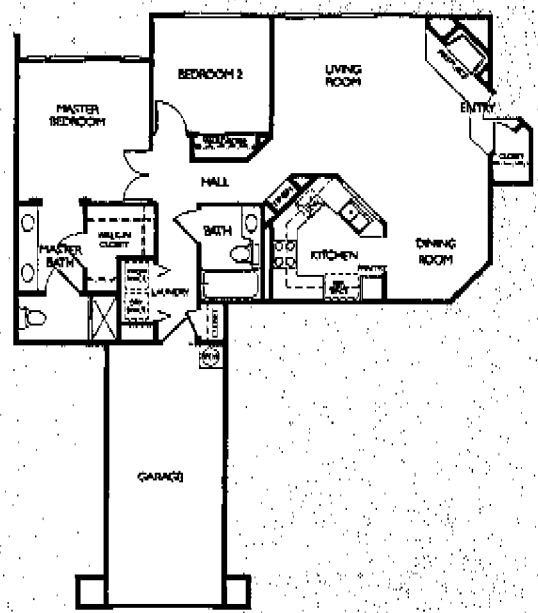


fourwinds

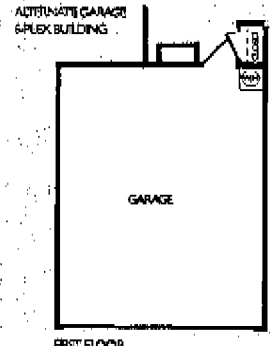
A relaxing place to come home to, whether you've been traveling the world or just touring the mall. From

its ground-floor ease (perfect for carrying lots of bags) to luxuries like its elegant master bath.

ONE STORY / TWO BEDROOMS / TWO FULL BATHS / CORNER WOOD-BURNING FIREPLACE / OPEN-DESIGN KITCHEN WITH SERVING BAR / INTERIOR LAUNDRY / BUILT-IN MEDIA NICHE / LARGE PANTRY / DIRECT ENTRY FROM ENCLOSED SINGLE-CAR GARAGE / ENCLOSED PATIO.



GARAGE



FIRST FLOOR

