



McMillin Homes

A Corky McMillin Company

Effective: 1/8/00

CROWN COLLECTION

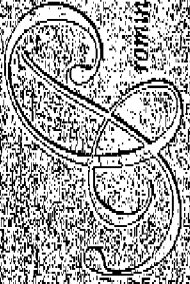
PRICE LIST

Plan One OPAL 4 Bedroom, 3 Bath 2,507 Square Feet	From \$535,990 To \$562,990
Plan Two AMETHYST 4 Bedroom, Plus Den, 2 ½ Baths 3,108 Square Feet	From \$574,990 To \$601,990
Plan Three SAPPHIRE 4 Bedroom + Den, 2 1/2 Baths 3,300 Square Feet	From \$610,990 To \$637,990
Plan Four EMERALD 5 Bedroom + Den, 3 ½ Bath 3,590 Square Feet	From \$636,990 To \$663,990

Brigitte Davidian & Julie Jones
(619) 693-4420

*Subsequent sales may result in unavailability of some or all of the above.
Prices subject to change without notice or obligation to prospective buyer.*

EQUAL HOUSING OPPORTUNITY
ANOTHER CORKY McMILLIN COMMUNITY



conveniently perched on a bluff

overlooking the harbor, it fills the Crown Collection presents a regal setting

to live in privileged comfort and distinction.

Steeped in elegance, sophisticated residences are graced with

distinctive architectural appointments, and enlivened with a wealth of customizations

that enrich the unique character of each special home.

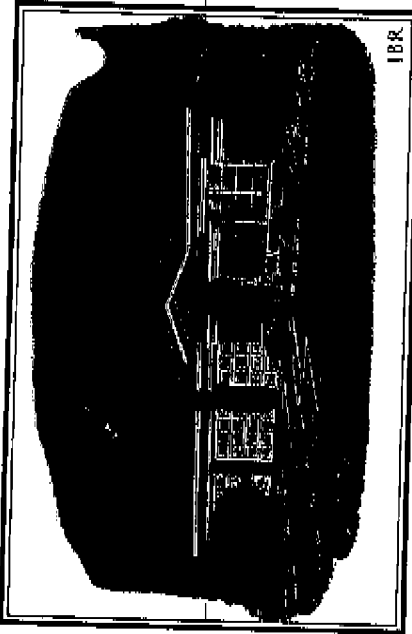
Unquestionably designed and exquisitely crafted, the Crown Collection

is a neighborhood that stands proudly apart — a reflection of the individual

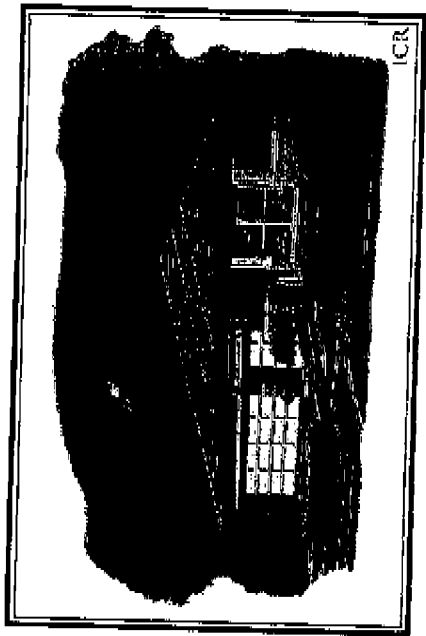
style and lofty standards of families who aspire for only the finest.



IAR

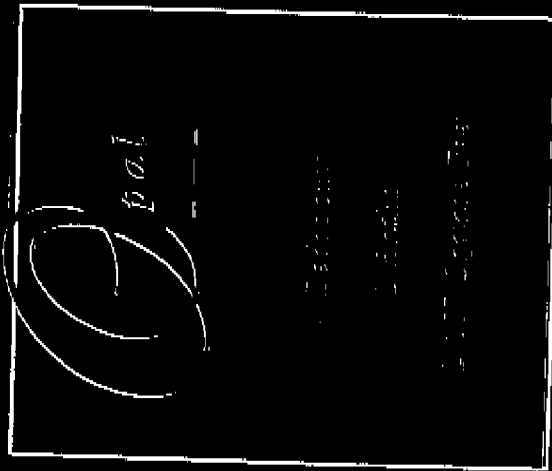


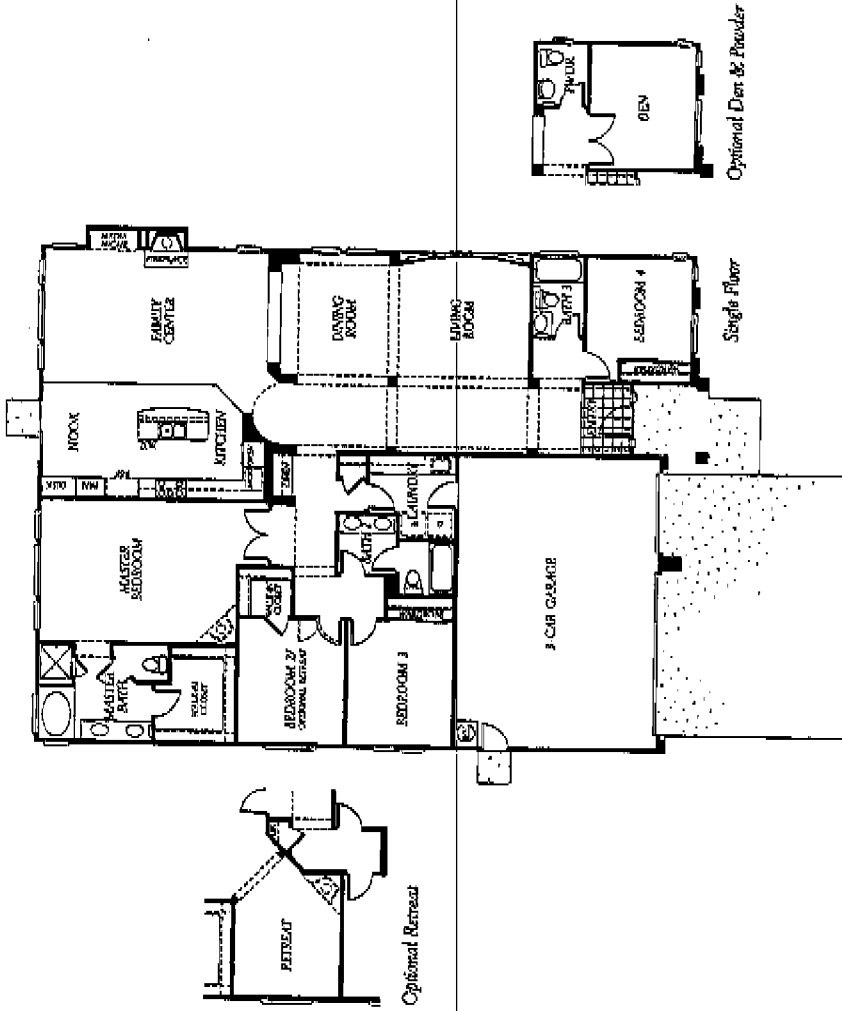
IBR

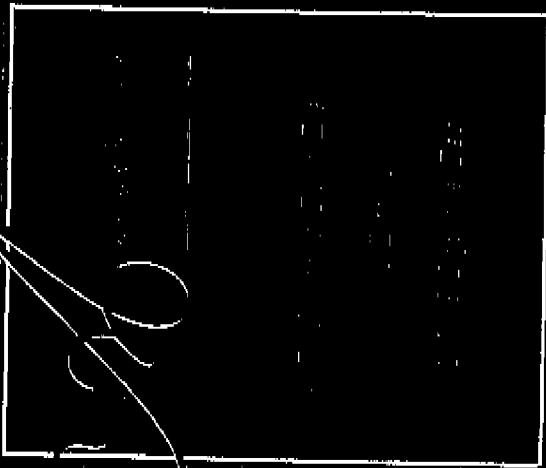
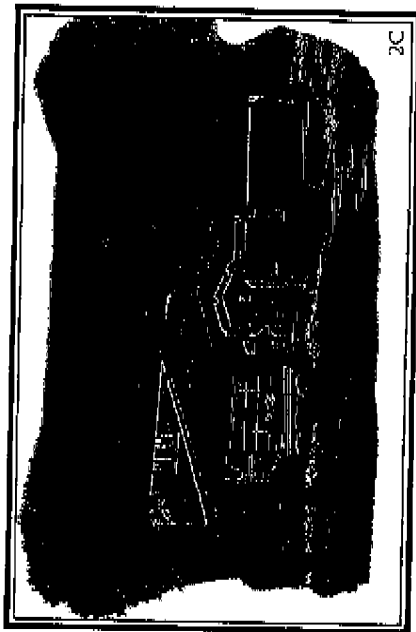
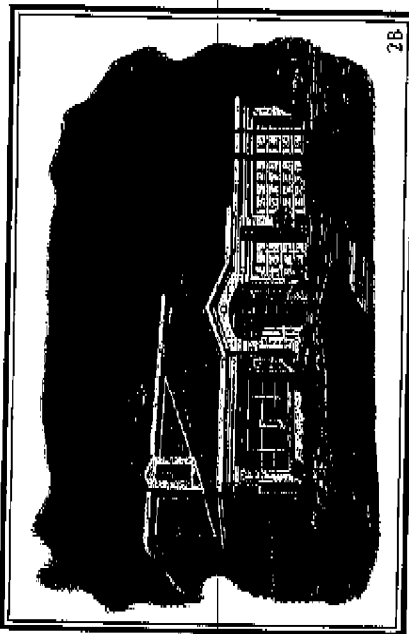
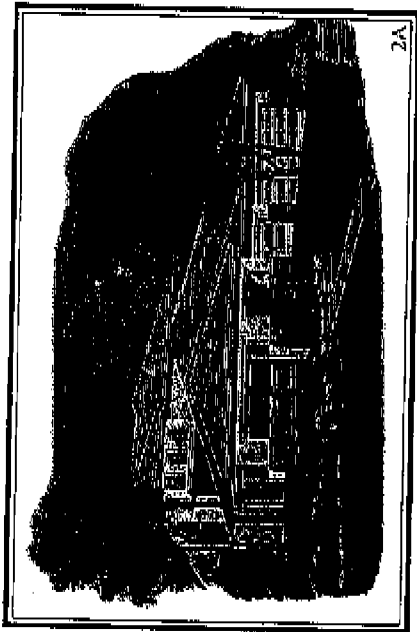


ICR

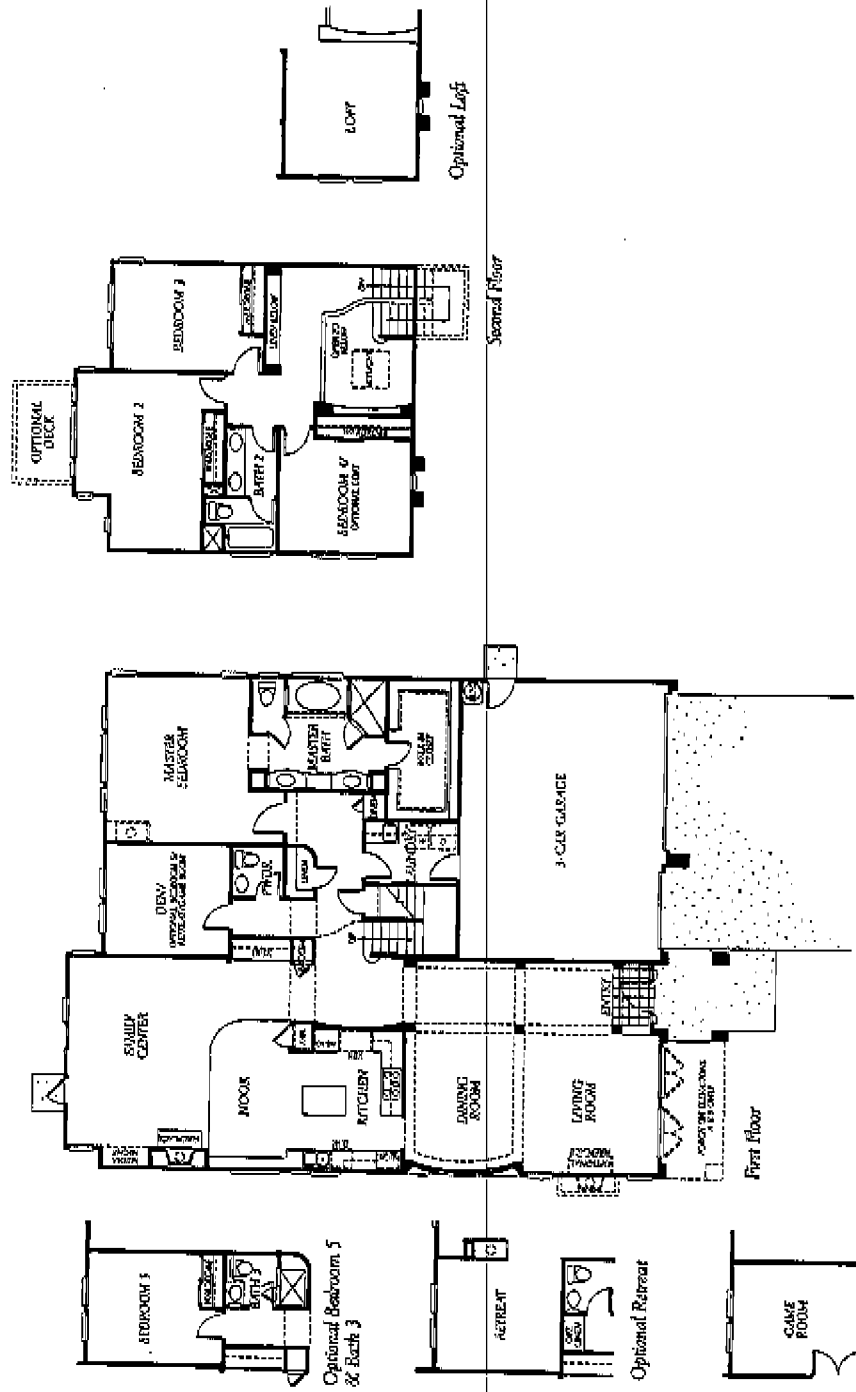
PRUDENTIAL
 CALIFORNIA
 REAL ESTATE
 SERVICES, INC.







Handwritten signature or initials.



OPTIONAL DECK

BEDROOM 2

BEDROOM 3

BATH 2

BEDROOM 1 / OPTIONAL LOFT

LOFT

Optional Loft

Second Floor

MASTER BEDROOM

MASTER BATH

BATH

3-CKX GARAGE

FAMILY CENTER

DEN / OFFICE

NOOK

KITCHEN

DINING ROOM

LIVING ROOM

UTILITY ROOM

First floor

OPTIONAL DECK

OPTIONAL DECK

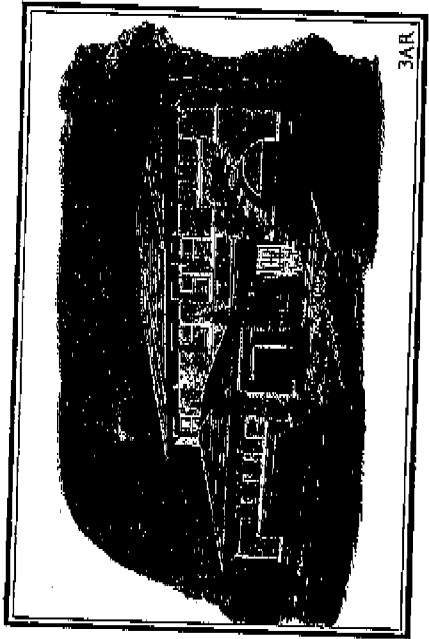
OPTIONAL BEDROOM 5 & BATH 3

RETREAT

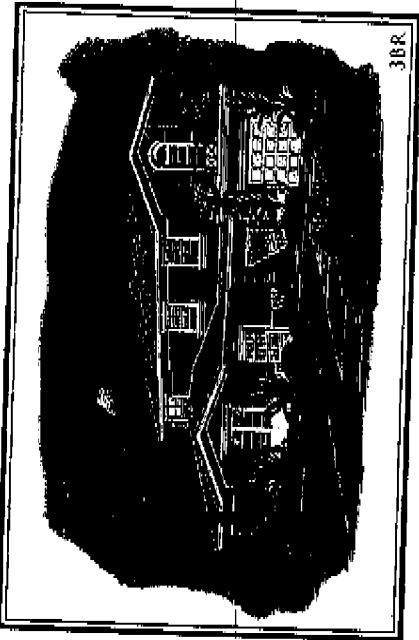
OPTIONAL RETREAT

GAME ROOM 4

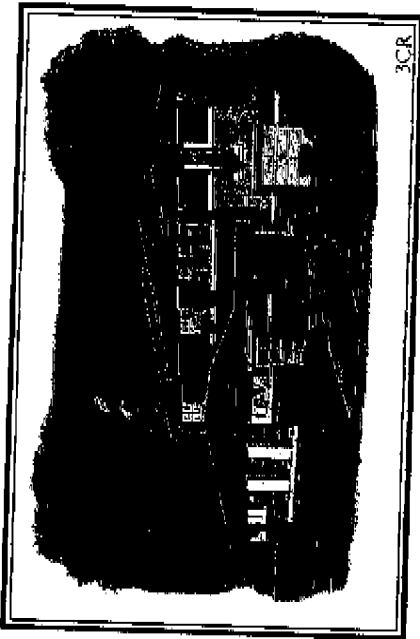
OPTIONAL GAME ROOM



3AR

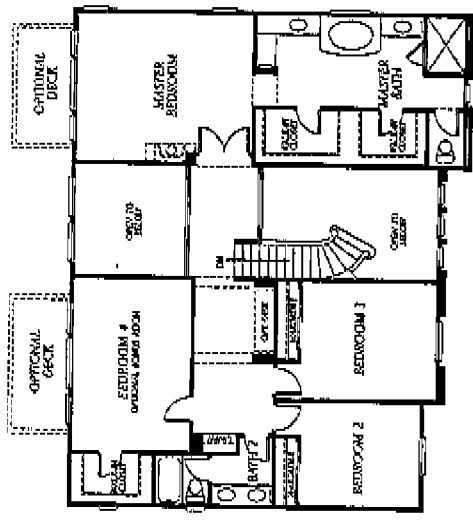


3BR

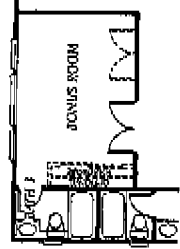


3CR

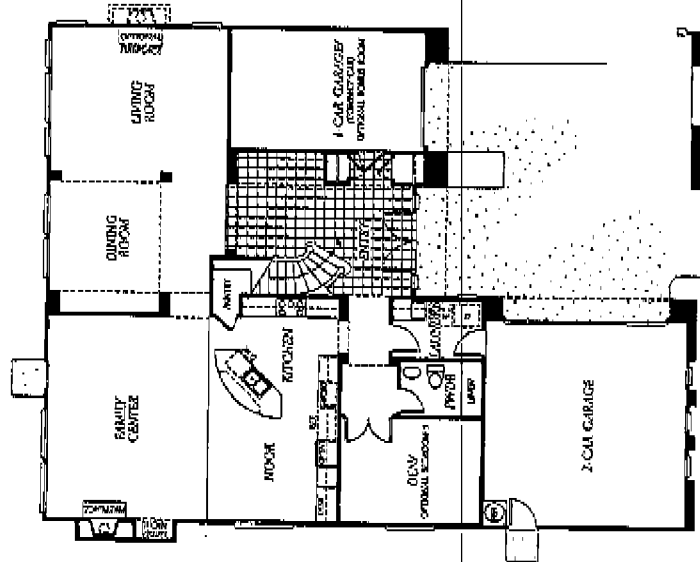
SERRI
 Sapphire
 [Faded text and graphics, including a large stylized 'S' logo and a grid of small images or text blocks.]



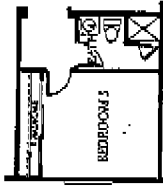
Second floor



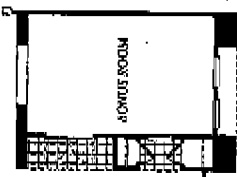
Optional Bonus Room & Bath 3 with Tub



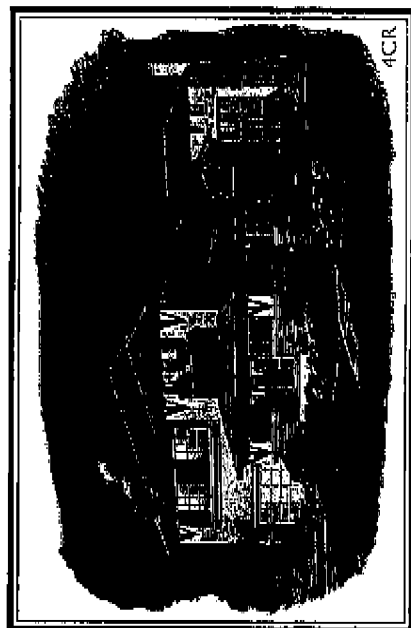
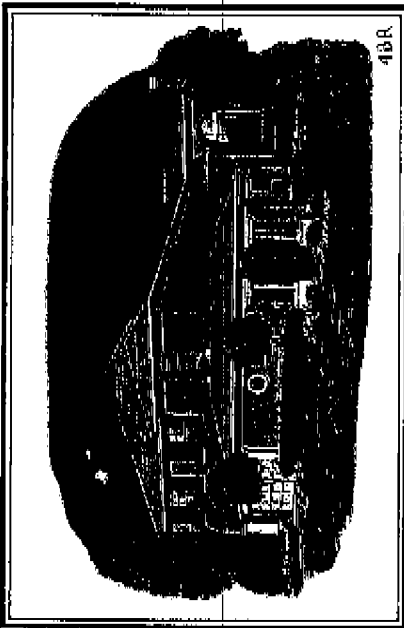
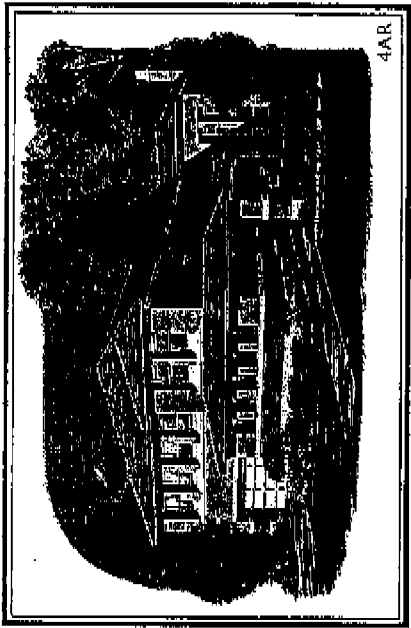
First Floor



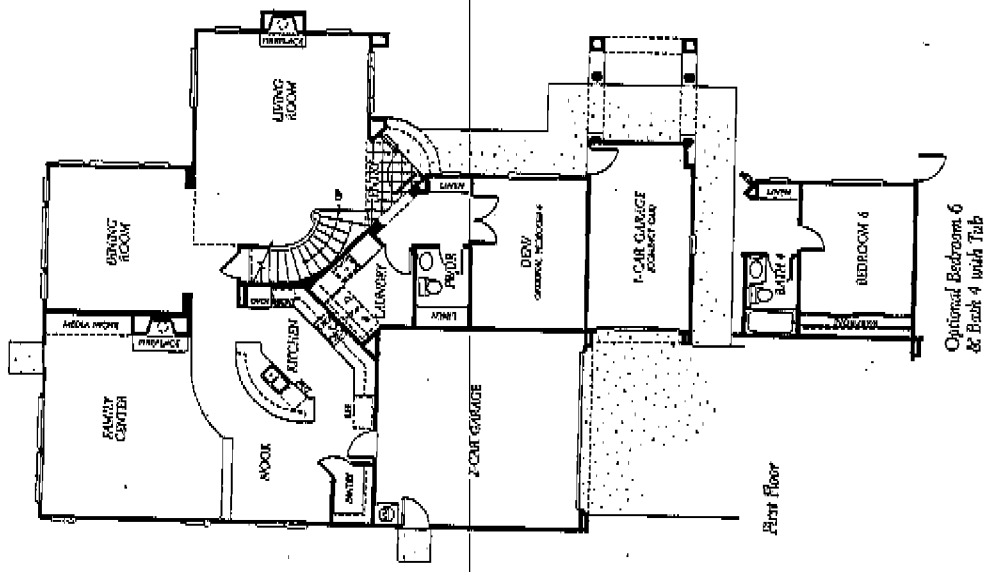
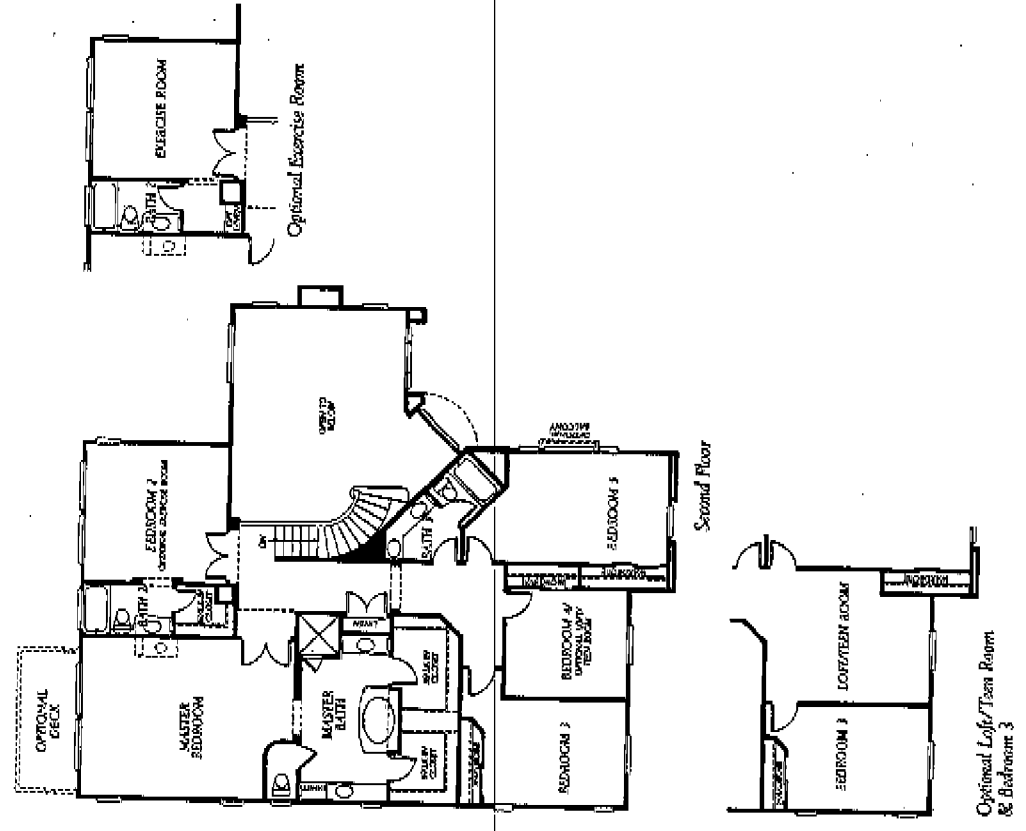
Optional Bedroom 5 & Bath 4 with Shower



Optional Bonus Room



PLAN
3



FEATURES

EXTERIORS

- Variety of exterior architectural styles including Regency, Palladian and Craftsman
- Full-yard fencing with a side-yard access gate
- Eight-foot raised panel entry door with dead bolt
- Color coordinated flat or S-tile five resistant concrete roofing
- Three-car garages
- Roll-up sectional garage doors with opener on double door
- Polished brass exterior door hardware
- Decorative exterior lighting
- Electrical outlet in front and rear of house
- Artistically specified exterior color palettes

ELEGANT INTERIOR DETAILS

- Custom ceramic tile entries
- Volcanic ceilings
- Balcony corners
- Colonial interior doors throughout with elegant hardware
- Generous linen closets and storage areas
- Wood-burning fireplaces with custom hearths and mantels in family rooms
- Entertainment niches
- Staircase with solid oak handrails and custom detailing
- Plush carpeting throughout living areas
- Easy-care vinyl flooring in laundry and secondary baths
- Designer-selected light fixtures
- Interior laundry areas with sink and storage cabinets
- Pre-wired for cable TV and telephone in master bedroom and family room
- Smoke detectors in all bedrooms
- Rocker switches throughout

GOURMET KITCHENS

- Quality European-style oak cabinetry with concealed hinges and finished interiors
- Gourmet islands in all plans
- 8" ceramic tile countertops in white or ivory
- GE appliances including:
 - Self-cleaning Profile® double oven in black or white
 - Profile® 5 burner gas cooktop in black or white
 - Profile® electronic dishwasher in black or white
 - Microwave in black or white
- Price Pfister faucet with pull-out spray spout
- Recessed lighting
- Spacious pantries
- Sound insulated heavy-duty garbage disposal
- Plumbed for automatic ice-maker
- Cast iron two-compartment porcelain sink
- Spacious breakfast nooks
- Spacious pantries

In the interest of continuing product improvement, Builder reserves the right to alter plans, specifications, designs, appliances, features, materials and pricing without prior notice. All major plans and illustrations are artist conceptions. Source fixtures quoted are approximate.

MASTER SUITES

- Spacious 8-foot colonist entry doors
- Expansive walk-in closets
- Top quality European-style oak cabinetry
- Mirrored wardrobe doors
- Separate oval tub and shower with glass enclosure
- 8" ceramic tile countertops, shower and tub surrounds
- Double china basins with Price Pfister widespread fixtures
- Large vanity mirrors

SECONDARY BATHS

- Ceramic tile vanity tops with china teats
- Price Pfister plumbing fixtures
- Enamel bathtub or shower with ceramic tile surrounds

WATER AND ENERGY FEATURES

- Dual-glazed vinyl windows throughout
- Central forced air heating and air conditioning units with set-back thermostat
- 50-gallon energy-efficient gas water heater
- Water-saving plumbing fixtures
- Temperature balancing shutoff valves
- Upgraded insulation in exterior walls and second floor ceilings

OPTIONS TO CUSTOMIZE YOUR HOME

- Marble, tile, axinite or granite countertops in a selection of designer colors in kitchen and baths
- Additional cabinetry options in a variety of styles and colors
- Glass doors on upper kitchen cabinets
- Fresh compactor in kitchen
- Fireplace in master bedrooms and living rooms
- Mahogany entry door
- Balcony off master bedroom (Plans 3 & 4)
- Privacy doors to master bath
- Security system
- Intercom
- Central vacuum
- Water filtration system
- Instant hot water supply in kitchen
- Designer glass panels for garage door
- Rain-gutter package
- Various pre-designed room options