

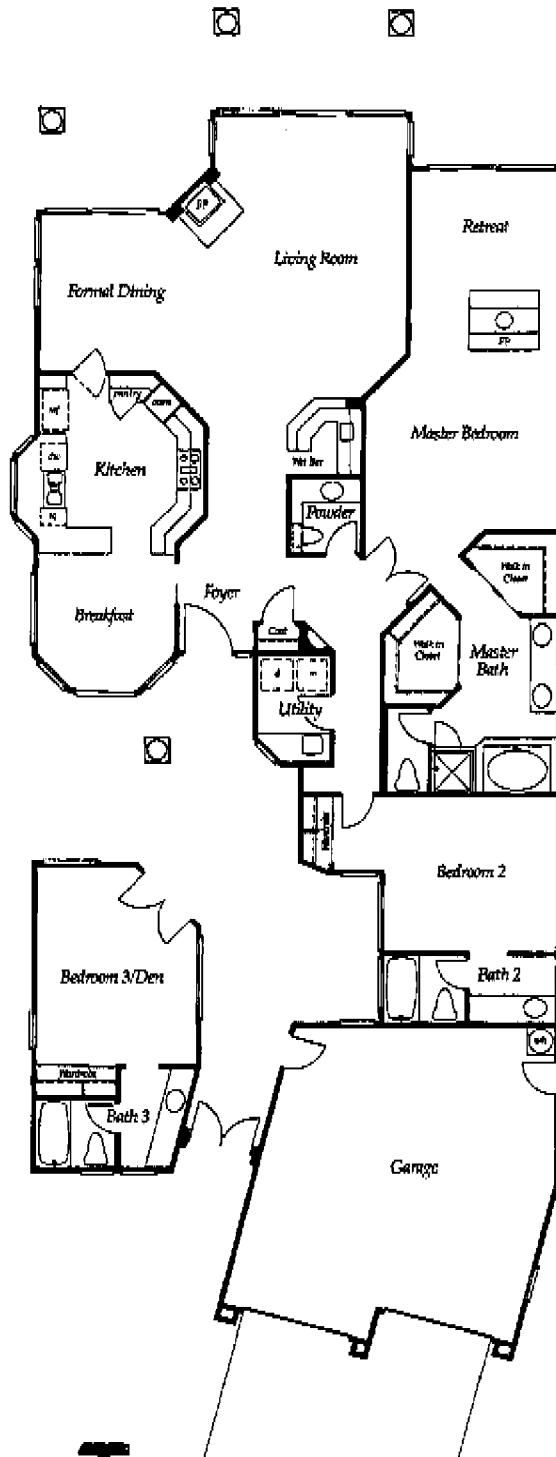


SANDPIPER

Plan 1 • 2,294 Square Feet • 3 Bedrooms, 3½ Baths • 2-Car Garage



CRYSTAL BAY
LA 10112

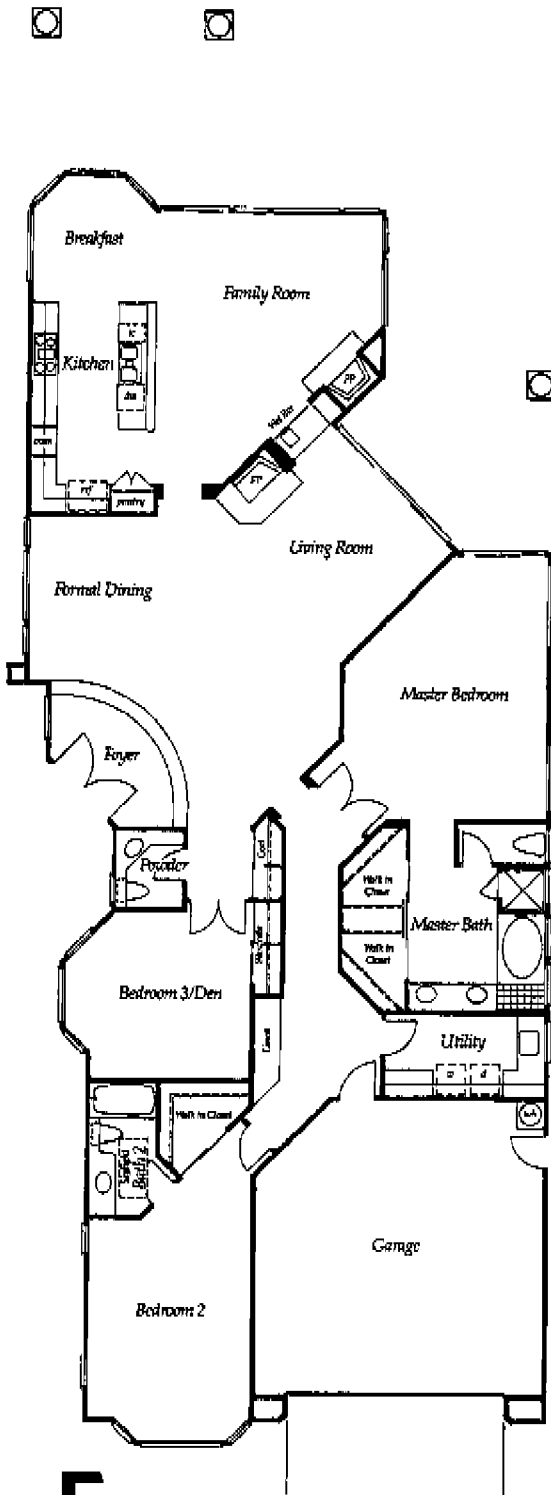


The romantic glow of a fireplace warms the sitting room and bedroom of this home's master bedroom suite. Each bedroom has the luxury of its own attached bath. A charming courtyard arrangement allows you to use the third bedroom as a very private retreat or a separate guesthouse.

WINDSONG

Plan 2 ▾ 2,560 Square Feet ▾ 3 Bedrooms, 2½ Baths, Family Room ▾ 2-Car Garage





Windsong

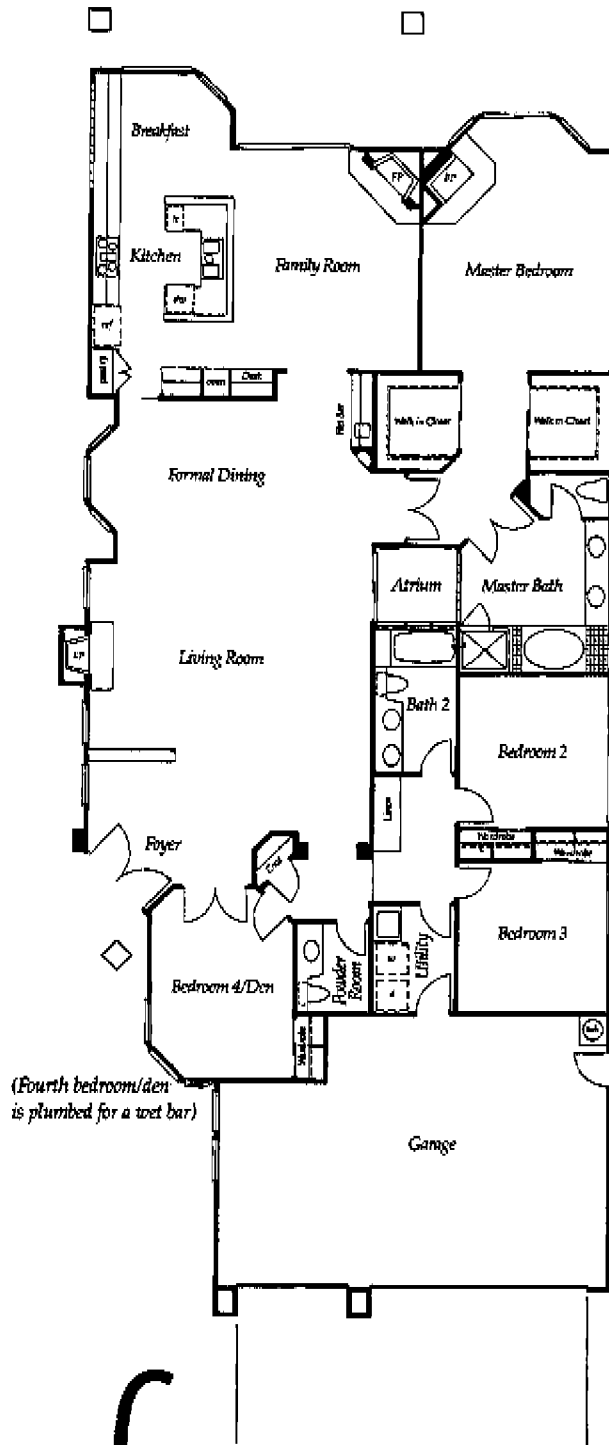
Exquisitely appointed and grandly proportioned, the living and dining areas of Windsong provide a perfect setting for a lifetime of gracious entertaining. A wet bar opens to both the living room and family room. Glass walls frame the sweeping views.

DAYSTAR

Plan 3 ▾ 2,649 Square Feet ▾ 4 Bedrooms, 2½ Baths, Family Room ▾ 3-Car Garage



CRYSTAL BAY
LA JOLLA



Daystar

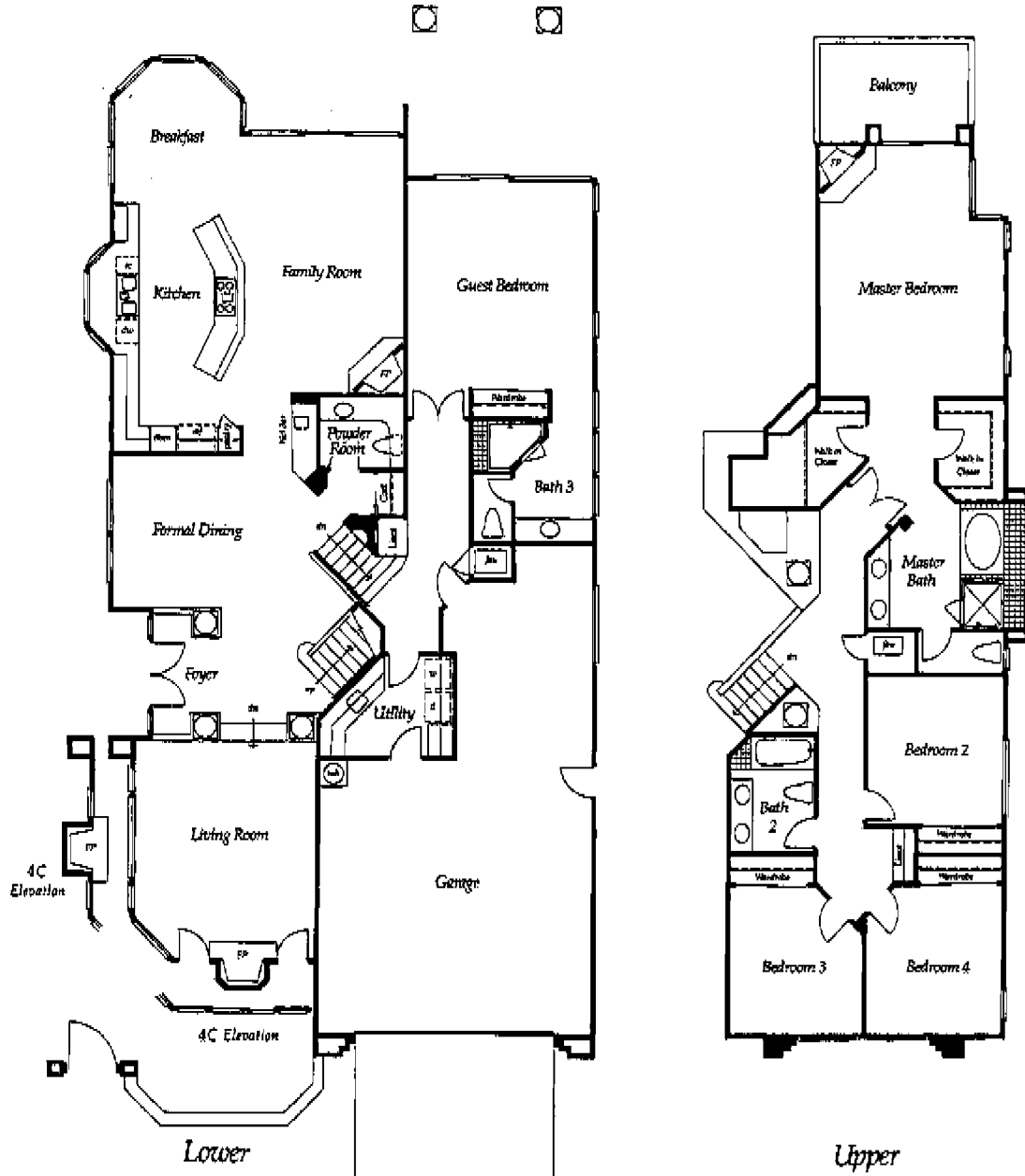
Graceful coffered ceilings create an atmosphere of elegance and sophistication in this extremely comfortable home. In the living room, an atrium contributes its special touch of serenity. A lofty solarium window invites the sunlight in to play. Separate fireplaces add warmth and cheer to the living room, family room and master suite. With access off the entry foyer, the fourth bedroom is ideally suited for a den.

STARGAZER

Plan 4 ▾ 3,385 Square Feet ▾ 5 Bedrooms, 3½ Baths, Family Room ▾ 3-Car Garage



CRYSTAL BAY
LA JOLLA



Stargazer

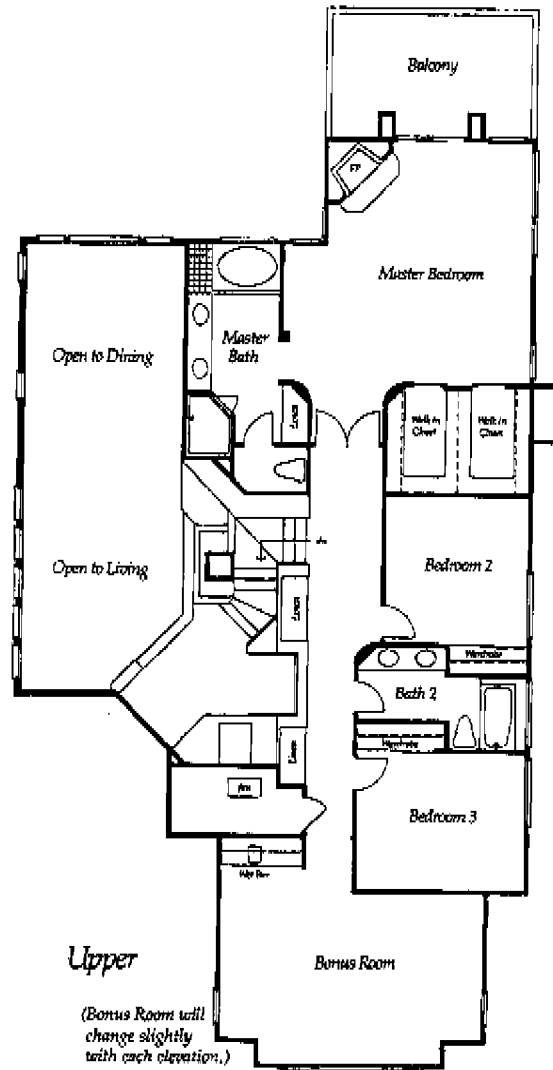
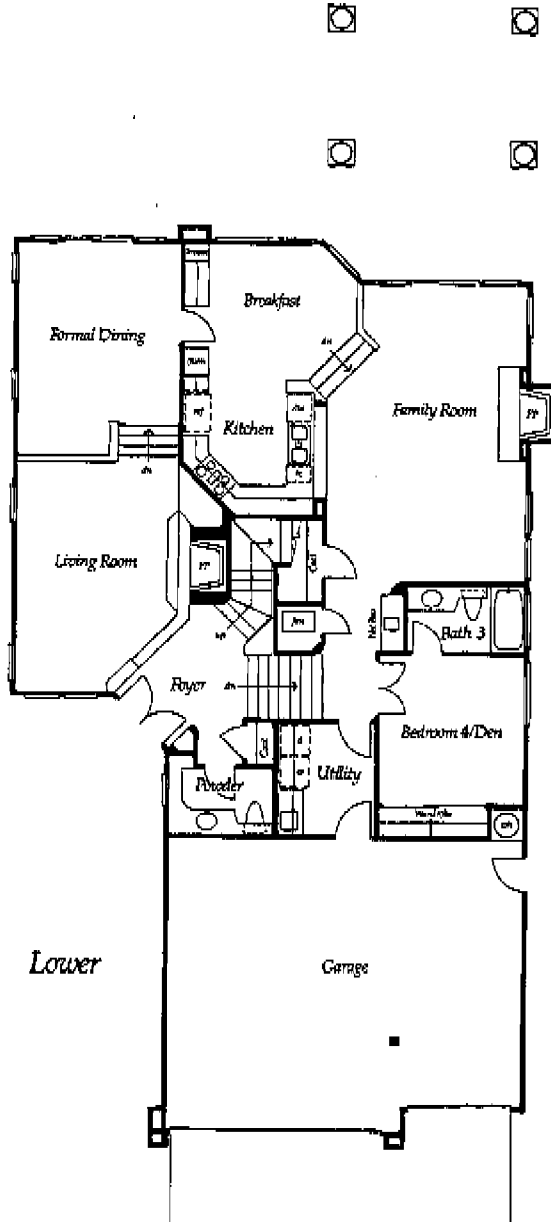
his dramatic split-level plan offers the relaxing privacy of a lavish master suite, a luxurious world apart from all the other living areas of the home. In the corner, a fireplace offers its comforting warmth. Beyond a wall of glass, a private deck soars out above the view. Downstairs, sunlight floods through every room, playing over walls and lofty ceilings. In the living room, French doors lead out to a lovely private garden.

SEASCAPE

Plan 5 • 3,052 Square Feet • 4 Bedrooms, 3 1/2 Baths, Family Room, Bonus Room • 3-Car Garage



CRYSTAL BAY
LA LITA



(Bonus Room will change slightly with each elevation.)

6000



Like a seaside pavilion, all of the living areas of this split-level home open to a sun-splashed view. The master suite, which also faces the view, is a thoughtfully planned, quiet retreat. Its luxurious touches include a double-door entry, a corner fireplace and a private deck.

6000