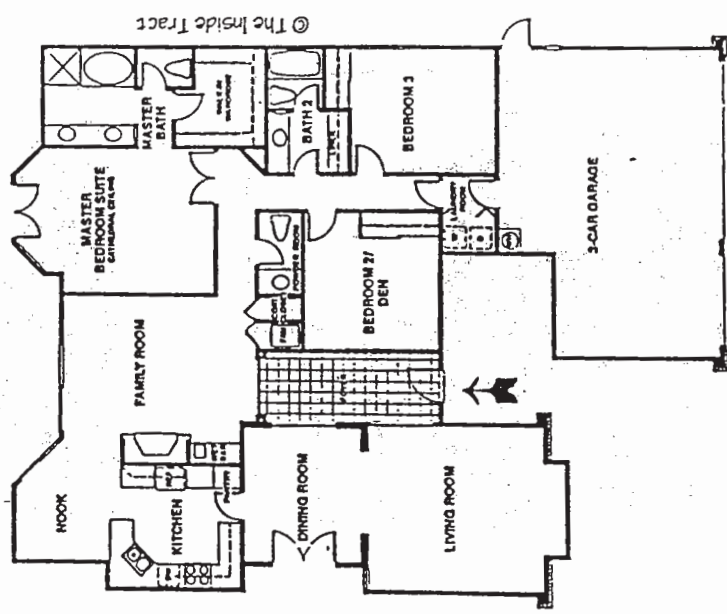
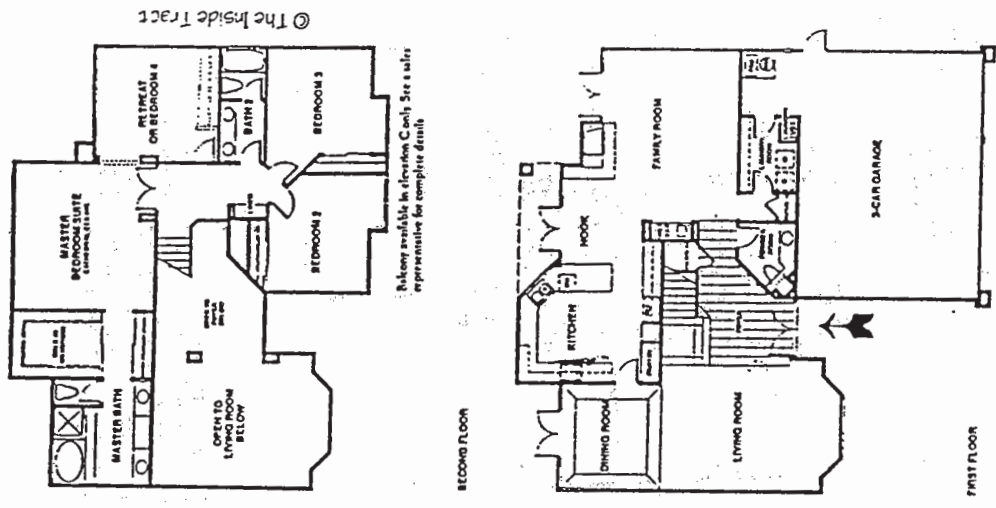
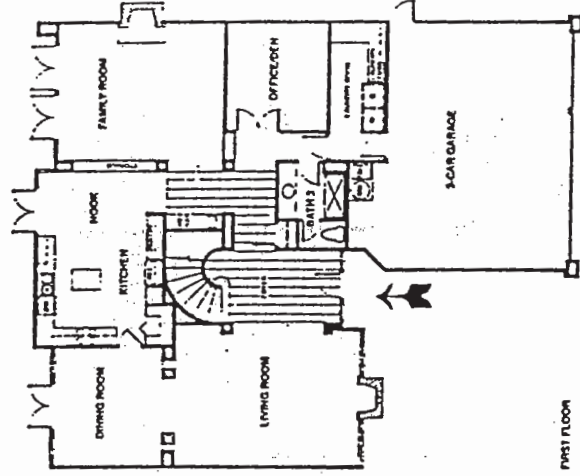
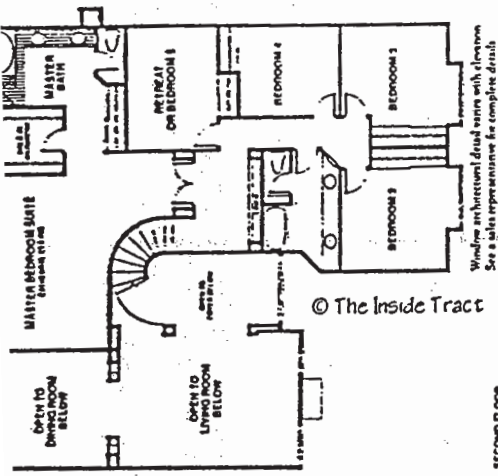


Del Mar Place

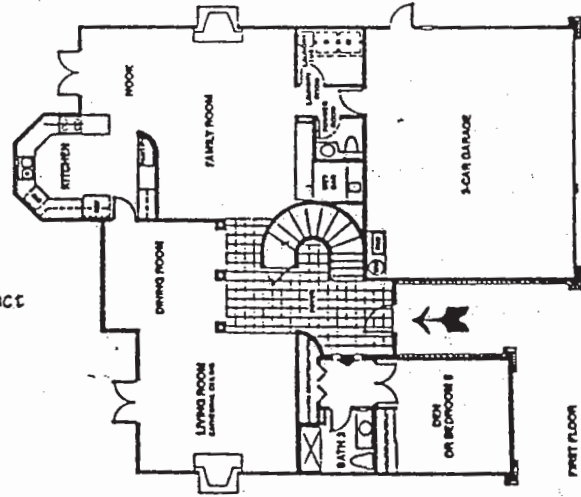
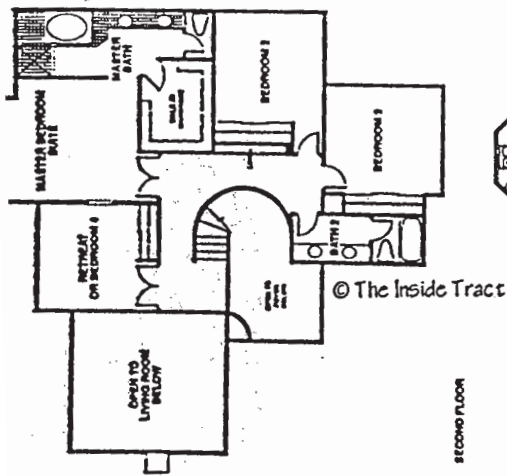
DEL MAR PLACE (CDM)
 Model: 2000-LEXINGTON
 Area: EDM B/T Code: DMP
 Approx SQ/FT: 2638
 ©The Inside Tract

DEL MAR PLACE (CDM)
 Model: 1000-WESTBROOK
 Area: EDM B/T Code: DMP
 Approx SQ/FT: 2065
 ©The Inside Tract





DEL MAR PLACE (CDM)
 Model: 4000-SOMERSET
 Area: EDM B/T Code: DMP
 Approx SQ/FT: 3294
 ©The Inside Tract



DEL MAR PLACE (CDM)
 Model: 3000-STRATFORD
 Area: EDM B/T Code: DMP
 Approx SQ/FT: 3304
 ©The Inside Tract

Features

Information Deemed Accurate
But Not Guaranteed

Tastefully Designed Kitchens

- Spacious nine-foot raised ceilings with architecturally designed flush lighting
- Attractive custom-designed oak cabinetry with choice of hand-finished stains
- Ceramic tile counter tops with decorator-selected choice of tile and grout color
- Elegant chrome Price-Pfister faucet with porcelain handles and triple sink with center compartment waste disposal
- General Electric self-cleaning oven and microwave with black glass front
- General Electric natural gas cook top
- General Electric fully electronic, large-capacity dishwasher
- Plumbed for ice-maker
- Decorator-selected quality vinyl flooring
- Spacious pantries with ample storage
- Bright airy breakfast nooks with outside access

Thoughtfully Planned Baths

- Custom-designed oak cabinetry with choice of hand-finished stains
- Ceramic tile counter tops with decorator-selected choice of tile and grout color
- Large vitreous china oval sinks with brass fixtures and porcelain handles
- Oversized full width mirrors over pullmans
- Architecturally-designed flush lighting
- Oversized oval Roman tubs with separate showers in master bath
- Water saver low boy toilets in master bath and powder room
- Decorator-selected quality vinyl flooring

Stylish Appointments Inside and Out

- Warm and friendly woodburning fireplaces, some with custom wood mantels and marble or brick hearths
- Classic French doors to patio in most plans
- Handsome Old World styled high baseboards
- Custom-crafted traditional stairways with built-in-place hand rails, turned balusters and newels
- Elegant raised-panel wood grain interior doors throughout
- Wood-cased windows in all front elevations — all other windows are dual-glazed with old-fashioned wood window sills
- All outside corners on the interior walls softly rounded for designer appeal
- Architecturally-selected exterior colors are painted on a sand trowelled finish
- Spacious nine-foot ceilings on lower levels with extensive use of volume in upper levels
- Decorator-selected ceramic tile or wood parquet formal entries
- High quality decorator-coordinated plush nylon carpeting throughout
- Expansive three-car garages with ample storage
- Automatic garage door openers

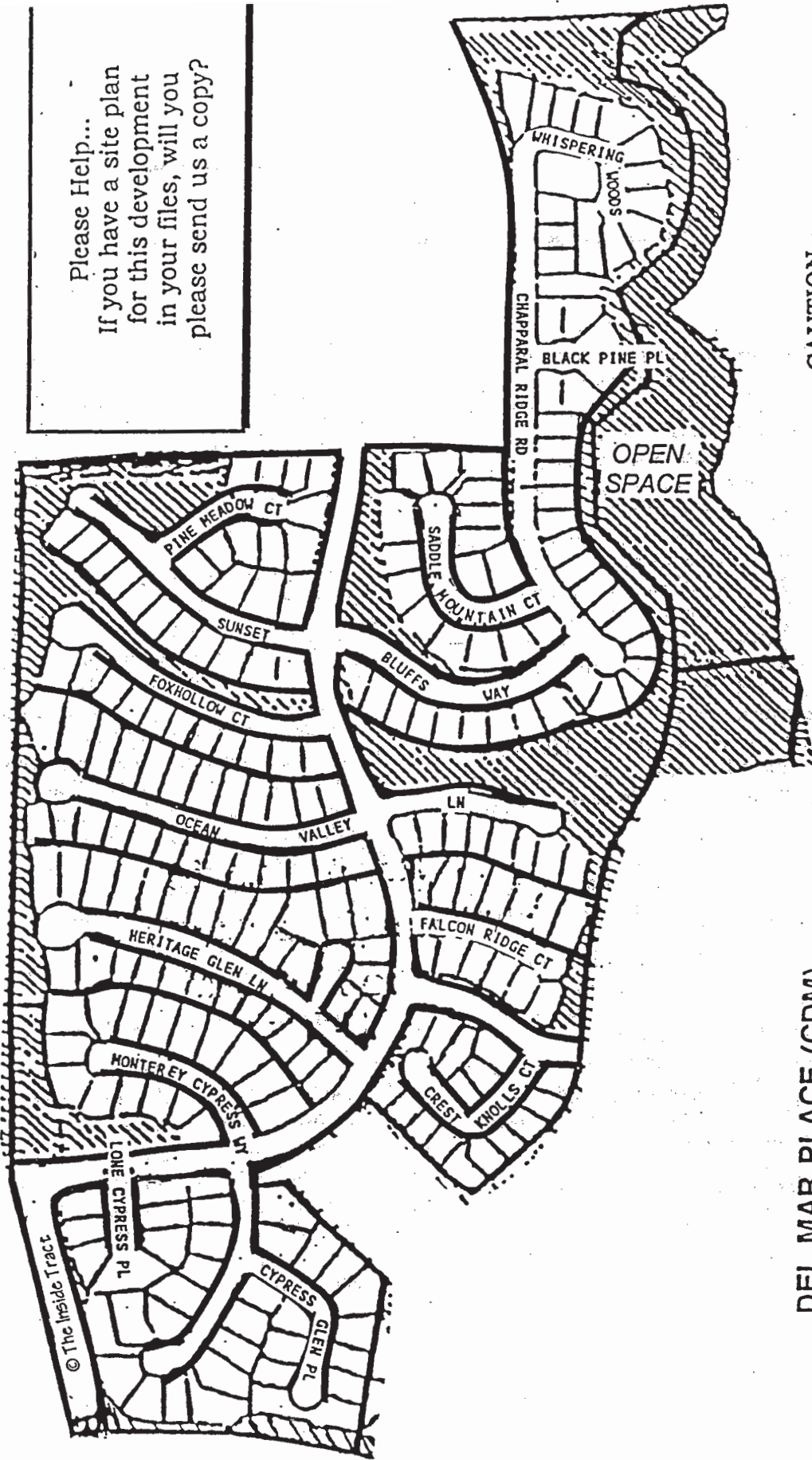
Optional Features Available

- Upgrade carpet and flooring selections
- Upgrade counter top tiles
- Complete air conditioning system
- Full length mirrored wardrobe doors
- Architecturally-designed pre-planned optional floorplan changes
- Tub enclosures
- Security system

© The Inside Tract

DEL MAR PLACE (CDM)

Please Help...
If you have a site plan
for this development
in your files, will you
please send us a copy?



DEL MAR PLACE (CDM)

CAUTION

This site plan may have been changed by the builder and there may be more phases that are missing from our files. If you find an error or have more info please call us. Thank you.