



EASTVIEW

TOWNHOME PRICES

BRITTANY PLAN 1: 1380 SQ. FT., 2 BEDROOMS/2 BATHS TO

CONCORD PLAN 2: 1775 SQ. FT., 3 BEDROOMS/2 BATHS TO

NORMANDY PLAN 3: 2007 SQ. FT., 3 BEDROOMS/3 BATHS TO

PROVENCE PLAN 4: 2271 SQ. FT., 3 BEDROOMS/2 1/2 BATHS TO

HOME PRICES

BORDEAUX PLAN A: 1704 SQ. FT., 3 BEDROOMS/2 BATHS TO

CHARDONNAY PLAN B: 1927 SQ. FT., 3 BEDROOMS/2 BATHS TO

DIJON PLAN C: 2261 SQ. FT., 3 BEDROOMS/2 1/2 BATHS TO

VERSAILLES PLAN D: 2568 SQ. FT., 4 BEDROOMS/2 1/2 BATHS TO

Prices subject to change and availability

## Eastview Features

From the very first architectural sketch, we've paid extraordinary attention to even the smallest appointment. Because we know that you appreciate the very best, we've insisted on excellent quality throughout, starting with design and decorator details... continuing through to construction methods and materials. These exceptional features have been incorporated as standard items in Eastview homes and townhomes.

Due to changes and improvements resulting from the Avco Community Developers, Inc. continuing research and development program, we reserve the right to alter product or design without notice or obligation prior to completion of unit and/or close of escrow.

## Townhomes

- ☑ Generous flooring allowance.
- ☑ Custom design woodburning fireplace with gas log lighter. (Two fireplaces in Plan 3.)
- ☑ Luminous kitchen ceiling (except Plan 1).
- ☑ Natural stain hardwood kitchen cabinets.
- ☑ General Electric double oven—one microwave and the other self-cleaning.
- ☑ General Electric dishwasher.
- ☑ Garbage disposal.
- ☑ Ceramic kitchen countertops.
- ☑ Refrigerator area plumbed for ice maker.
- ☑ Dining room fixture allowance. Wet bar (Plans 3 & 4 only).
- ☑ Custom detailed Corian counter tops in baths.
- ☑ Antique brass finished bathroom fixtures.
- ☑ Master bath Roman tile tub (except Plan 1).
- ☑ Ceramic tile and cast iron tubs in secondary baths.
- ☑ Shingle or shake roof with clay tile ridge or clay tile roof depending on elevation.
- ☑ Automatic garage door opener.
- ☑ Full insulation.
- ☑ Gas forced air heating.
- ☑ Bronze painted window frames.
- ☑ Pre-wired for cable TV.
- ☑ Underground utilities.
- ☑ Concrete driveway.
- ☑ Stamped concrete area in walks of some models.

\*Varies with plan.

## Homes

- ☑ Generous flooring allowance.
- ☑ Custom design woodburning fireplace with gas log lighter. (Two fireplaces in Plans B, C & D.)
- ☑ Luminous kitchen ceiling.
- ☑ Natural stain hardwood kitchen cabinets.
- ☑ Thermador stainless steel cook top with separate built-in double oven, one self-cleaning oven and one microwave oven (except Plan A).
- ☑ Waste King dishwasher.
- ☑ Trash compactor.
- ☑ Garbage disposal.
- ☑ Ceramic kitchen countertops.
- ☑ Refrigerator area plumbed for ice maker.
- ☑ Dining room fixture allowance. Wet bar.
- ☑ Mosaic tile and Italian marble countertops.\*
- ☑ Antique brass finished bathroom fixtures.
- ☑ Ceramic tile and Italian marble Roman tubs in master bath.\*
- ☑ Ceramic tile and cast iron tubs in secondary baths.
- ☑ Mirrored wardrobe doors (master bedroom).
- ☑ Shingle or shake roof with clay tile ridge or clay tile roof depending on elevation.
- ☑ Automatic garage door opener.
- ☑ Full insulation.
- ☑ Gas forced air heating.
- ☑ Bronze painted window frames.
- ☑ Pre-wired for cable TV.
- ☑ Underground utilities.
- ☑ Concrete driveway.

These features are also available as options:

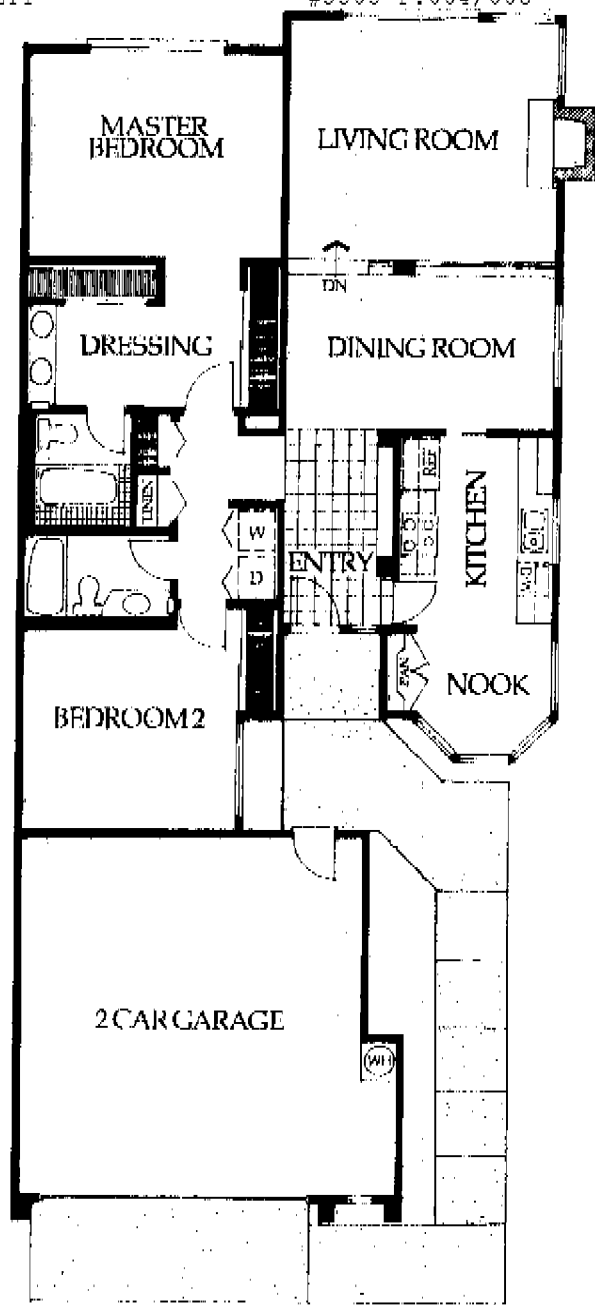
- ☑ Air conditioning.
- ☑ Mirrored wardrobe doors.
- ☑ Bath tub enclosures.
- ☑ Additional garage door opener



*eastrow*



The Brittany is a quaint townhouse just for the two of you. From the dramatic entry, step into the kitchen where french windows filter light into a cheery breakfast nook. In the sunken living room, a brick hearth fireplace sits next to a corner of bright windows, a charming spot for your favorite wingback chair. And in the master suite, a separate dressing area makes the morning rush a little easier. The cozy second bedroom is just right for an art studio.

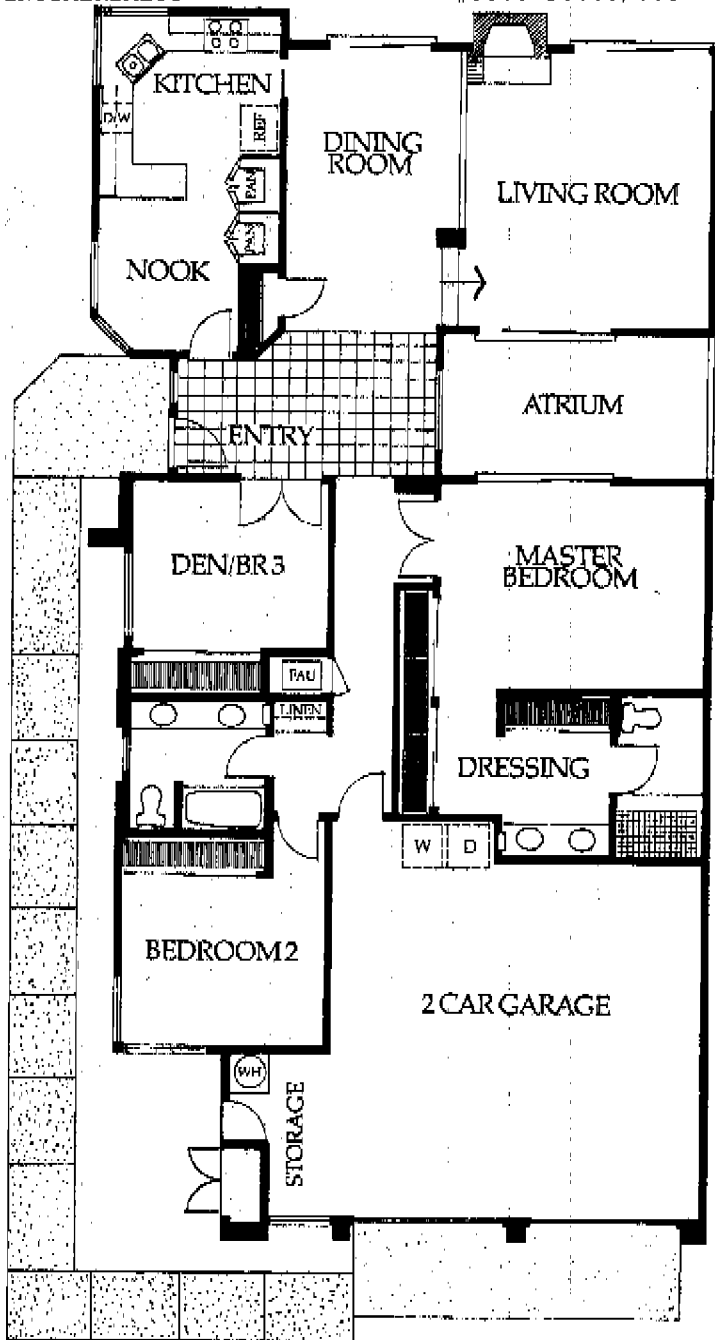


# BRITTANY PLAN 1

1380 SQ. FT.  
2 BEDROOMS / 2 BATHS  
TOWNHOME



The Concord is a plant lover's delight. In the entryway, a glass walled atrium is the focal point. Perfect for lush, green Boston ferns. A formal dining room overlooks the sunken living room. In the kitchen, there's a corner sink with plenty of work room. The master suite features a sunken tub and generous double wardrobe.

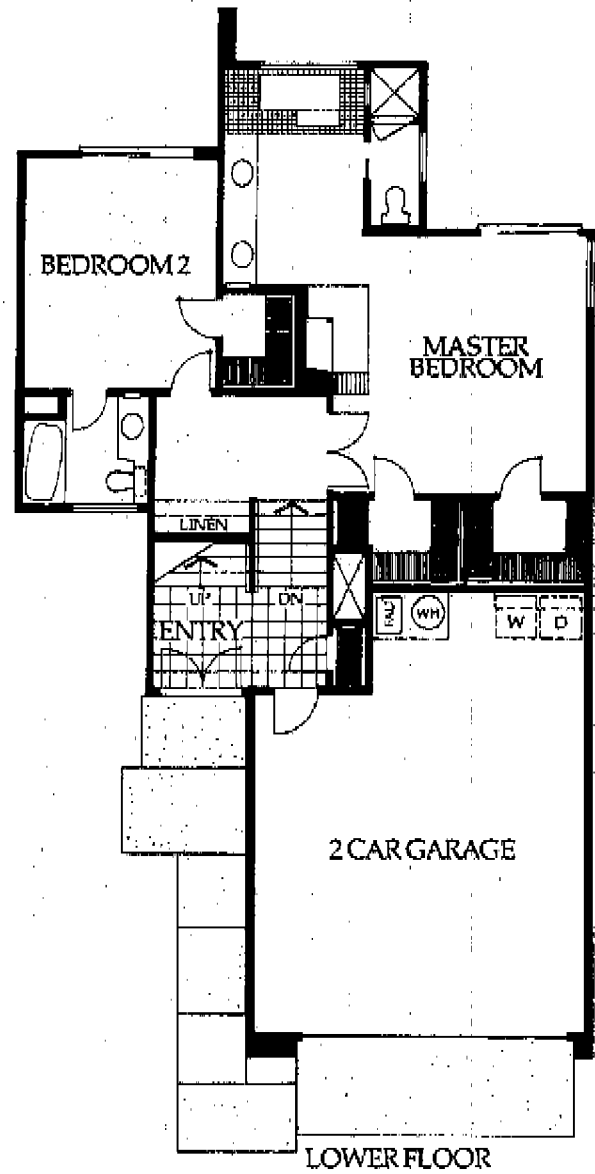


# CONCORD PLAN 2

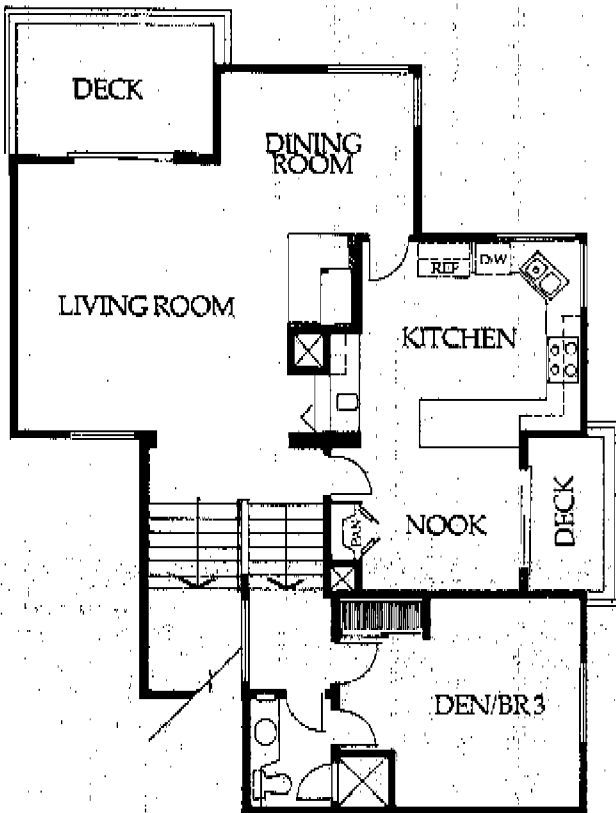
1735 SQ. FT.  
3 BEDROOMS / 2 BATHS  
TOWNHOME



The multi-level Normandy is perfect for entertaining. Guests enter up a short flight of stairs to the living room, with its vaulted wood ceiling and panoramic views from an outdoor deck. The living room and formal dining room share a corner fireplace. In the efficient "U" shaped kitchen, a separate sink and counter serves as a wet bar. Downstairs in the master suite, a sunken tub is warmed by another corner fireplace.



LOWER FLOOR



UPPER FLOOR

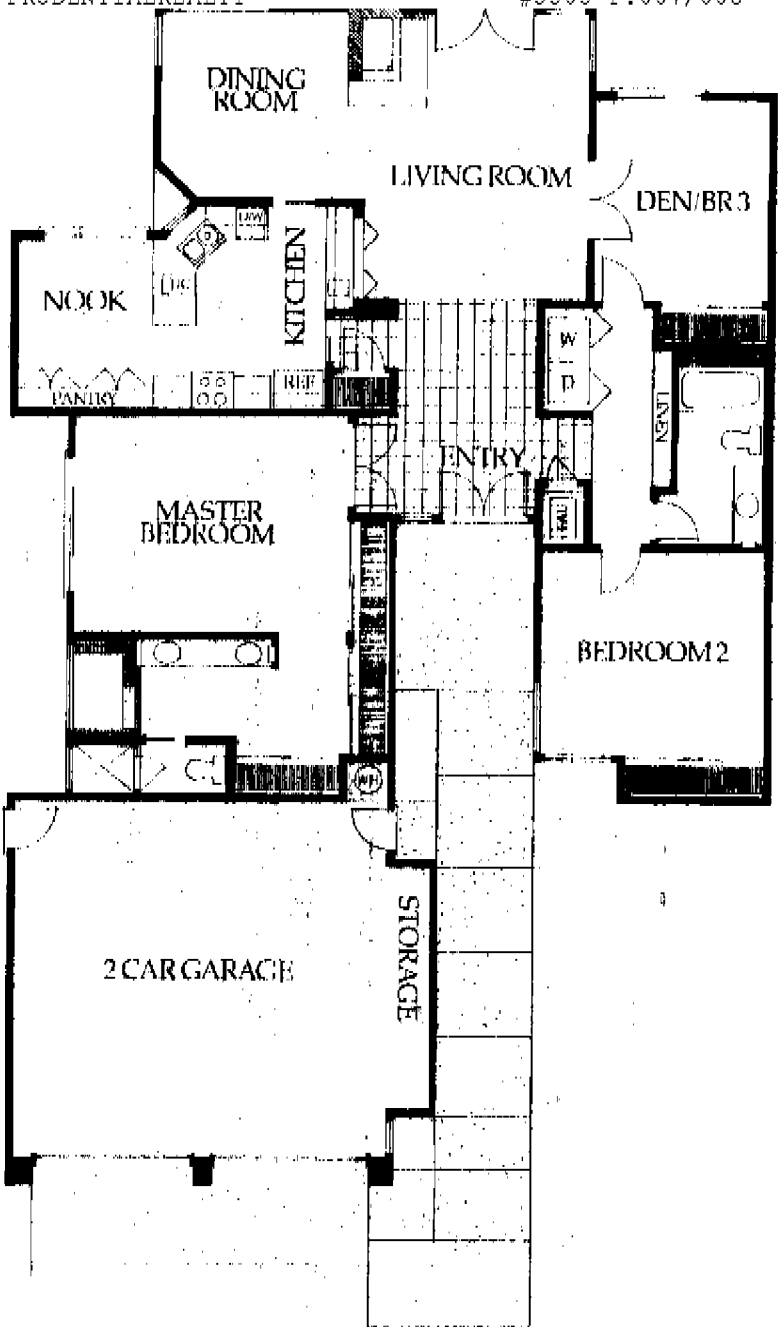


# NORMANDY PLAN 3

2007 SQ. FT.  
3 BEDROOMS / 3 BATHS  
TOWNHOME



The Bordeaux offers comfort combined with classic design. In the living room with its vaulted ceiling, sunlight shines through a wall of french doors. The kitchen features an oversized pantry that holds more than a gourmet chef could ever need. And in the master suite, a sunken tub and shower overlook a charming garden. The perfect spot to draw a hot bath and spend the evening lost in a romantic novel.



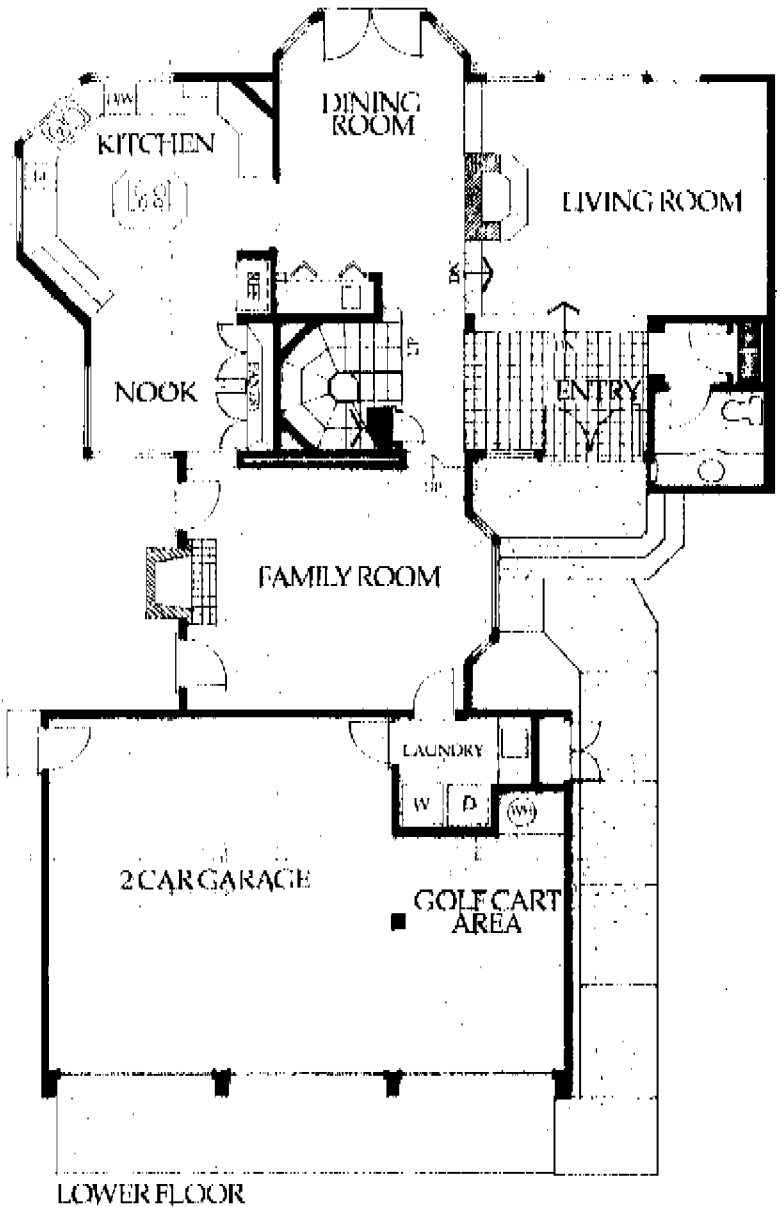
# BORDEAUX PLAN A

1704 SQ. FT.

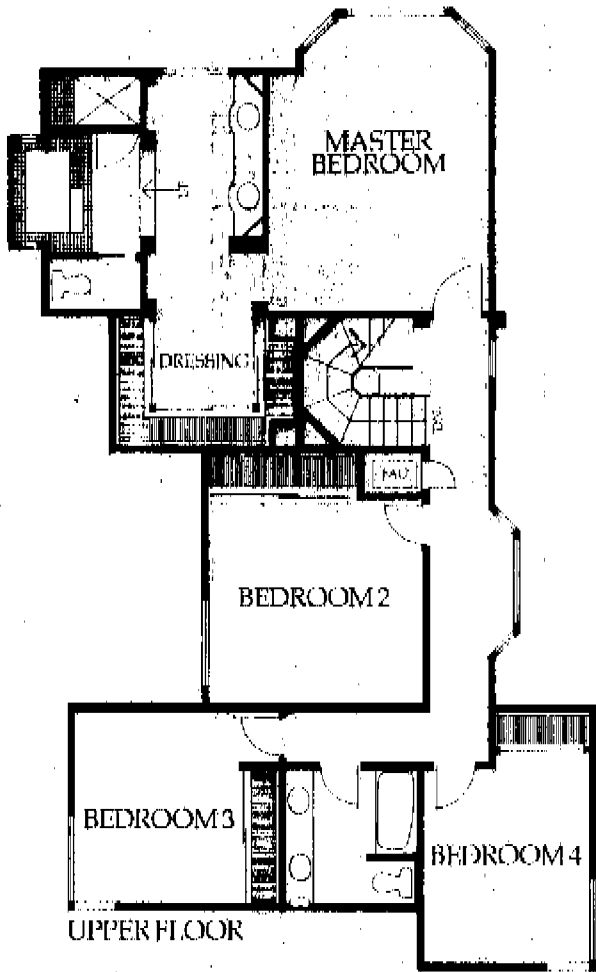
3 BEDROOMS / 2 BATHS



Classically elegant, the Versailles brings with it all the grandeur of its namesake. Step down into the sunken living room where an enormous travertine fireplace stretches from floor to ceiling. Sunlight filters through bay windows and brightens the circular kitchen with its center-island range. A winding stairway leads upstairs to the master suite. There, discover a multi-level dressing and bath area fit for royalty.



LOWER FLOOR



UPPER FLOOR



# VERSAILLES PLAN D

2568 SQ. FT.

4 BEDROOMS / 2 1/2 BATHS