



## THE INTERIORS

- Nine foot ceiling "plate" lines with eight foot sliding glass doors. (In most areas.)
- Impressive entries with raised panel Mahogany eight foot entry doors.
- Decorative Schlage polished brass front door hardware.
- Living rooms with dramatic volume and clerestory glass.
- Large formal dining rooms.
- Elegant fireplaces with detailed wood mantles and marble hearths and accents.
- Ceramic tile or wood parquet entries.
- Decorator sheet vinyl in kitchen, baths and laundry rooms.
- 100% nylon carpeting in other areas.
- Custom designed wood windows in certain areas.
- Large service porch with utility sink and garage access. (Except Plan 1.)

## THE KITCHENS

- Separate informal dining nook.

- "Jenn-Aire" range with barbecue grill. (Except Plan 1.)
- Double wall ovens, microwave upper oven and oversize self-cleaning lower oven. (Except Plan 1.)
- Multi-cycle dishwashers.
- Hand finished oak cabinetry with Kortron finished interiors.
- Adjustable kitchen shelves.
- Cast iron "bone" colored kitchen sink.
- Garbage disposal.
- Spacious pantries.
- Luminous ceilings.
- Refrigerator area plumbed for ice maker with recessed box.

## THE BATHS

- Master Suites Feature
- Windows for natural light and ventilation.
- Oval tub (spa jets available in Phase IV & V only) with ceramic tile wainscot.
- Separate shower with ceramic tile surrounds and safety glass enclosure.
- Decorative polished brass "wide

- spread" plumbing hardware.
- Double lavs.
- Corian countertops with tile backsplash and scalloped front.
- Oak-finished cabinetry.
- Large "Slim-Jim" medicine cabinets.
- "Bone" colored lavs, tubs and water closets.
- Low profile water closet.

## Secondary Baths Features

- Windows for natural light and ventilations.
- Custom quality "wide spread" chrome plumbing fixtures.
- Steel tubs with ceramic tile surround.
- Corian countertops.
- Oak-finished cabinetry.
- Custom style makeup lights.
- "Bone" colored lavs, tubs and water closets.
- Low profile water closet in powder room.
- Corian countertops with tile backsplash and scalloped front in powder room.



## THE EXTERIORS

- Gated entry courtyards. (Most lots.)
- Clay tile or wood shingle with tile ridge roofs.
- Front yard landscaping and side yard fencing.
- Full exterior wall and ceiling insulation.
- Painted bronze finish on all window frames.
- Underground utilities.

## THE FINISHING TOUCHES

- All bedroom closets include section double poled and additional shelving.
- Custom textured ceilings and walls.
- Rounded drywall corners.
- Detailed trim mouldings at doors.
- Distinctive, elegant lighting fixtures.
- Dining room light fixture allowance.
- Wood stair rails.
- Polished brass passage door hardware.
- Automatic garage door opener.
- Gas forced air heating with setback thermostat.

- Prewired for cable television and telephone.
- Smoke detector alarm.
- Wood window sills.

## THE COMMUNITY AMENITIES

- Swimming pool.
- Spa.
- Four tennis courts.
- Barbecue area with kitchen.
- Common area landscaping maintained by the homeowners association.

## THE OPTIONS

- Mirrored wardrobe doors.
- Air conditioning.
- Tub/shower enclosures.

Note: Many of the items featured in the model homes are decorator suggestions and not included in the purchase price. If you are in doubt, please contact your sales consultant. We reserve the right to change floorplans, material, features and prices.

### THE PEARL • Plan 1

2 Bedrooms, Den, 2 Baths  
1778 Square Feet

\$~~189,000~~ to ~~269,000~~

### THE EMERALD • Plan 2

3 Bedrooms, Family Room, 2½ Baths  
2314 Square Feet

\$~~219,000~~ to ~~289,000~~

### THE SAPPHIRE • Plan 3

3 Bedrooms, Loft, Family Room, 2½ Baths  
2635 Square Feet

\$~~219,000~~ to ~~279,000~~

### THE DIAMOND • Plan 4

4 Bedrooms, Family Room, 3 Baths  
2872 Square Feet

\$~~249,000~~ to ~~326,500~~



QUALITY HOMES BUILT BY THE BUIE CORPORATION

NOTE: PRICES ARE SUBJECT TO CHANGE WITHOUT NOTICE.

\*Denotes unit with 3-car garage

| Plan                  | Lot | Unit | Price     |
|-----------------------|-----|------|-----------|
| THE PEARL (PLAN 1)    | 231 | 1AR  | \$179,000 |
|                       | 229 | 1BR  | 179,000   |
|                       | 226 | 1AR  | 189,000   |
|                       | 233 | 1AR  | 179,000   |
| THE EMERALD (PLAN 2)  | 230 | 2BR  | 209,000   |
|                       | 224 | 2AR  | 234,000   |
|                       | 222 | 2BR  | 239,000   |
|                       | 234 | 2BR  | 199,000   |
|                       | 232 | 2BR  | 199,000   |
|                       |     |      | 199,000   |
| THE SAPPHIRE (PLAN 3) | 228 | 3AR  | 209,000   |
|                       | 225 | 3BR  | 234,000   |
|                       |     |      | 234,000   |
| THE DIAMOND (PLAN 4)  | 227 | 4BR  | 234,000*  |
|                       | 223 | 4BR  | 259,000   |
|                       |     |      | 259,000   |

PHASE 1 PRICING

EASTVIEW

# PHASE I

## THE PEARL • Plan 1

2 Bedrooms, Den, 2 Baths  
1778 Square Feet

## THE EMERALD • Plan 2

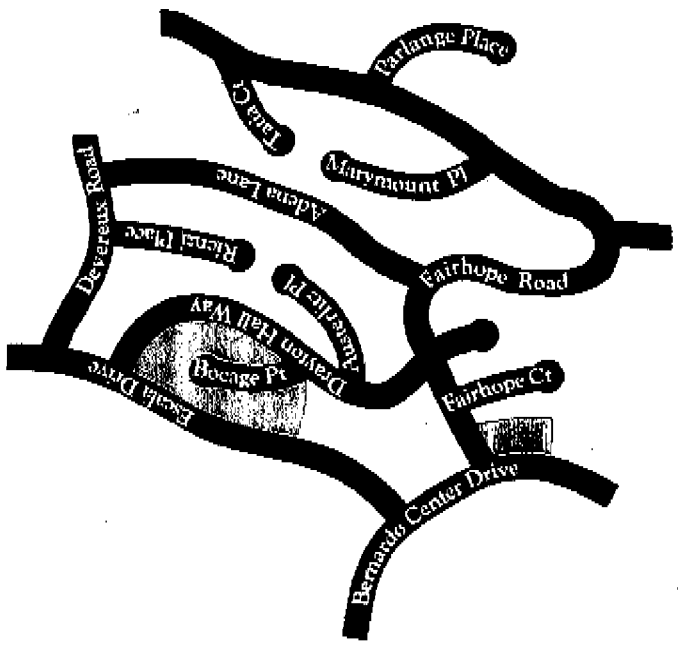
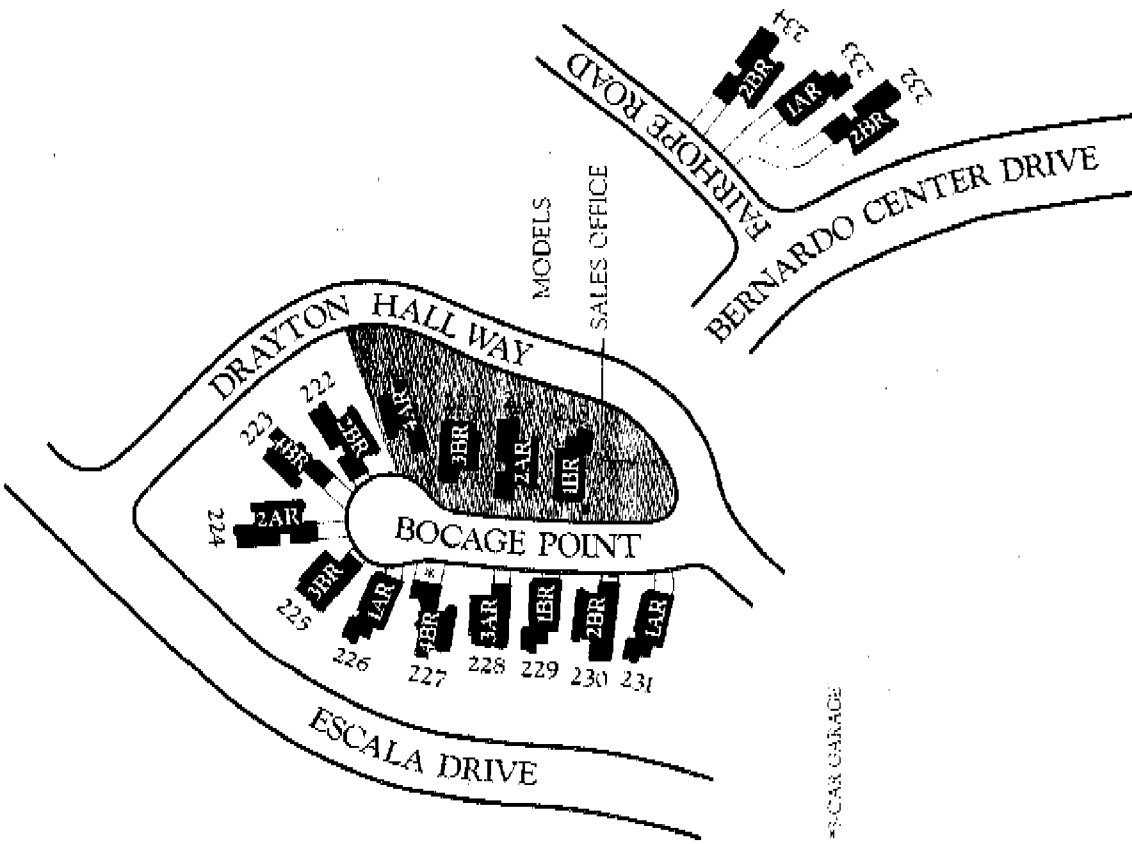
3 Bedrooms, Family Room, 2½ Baths  
2314 Square Feet

## THE SAPPHIRE • Plan 3

3 Bedrooms, Loft, Family Room, 2½ Baths  
2635 Square Feet

## THE DIAMOND • Plan 4

4 Bedrooms, Family Room, 3 Baths  
2872 Square Feet



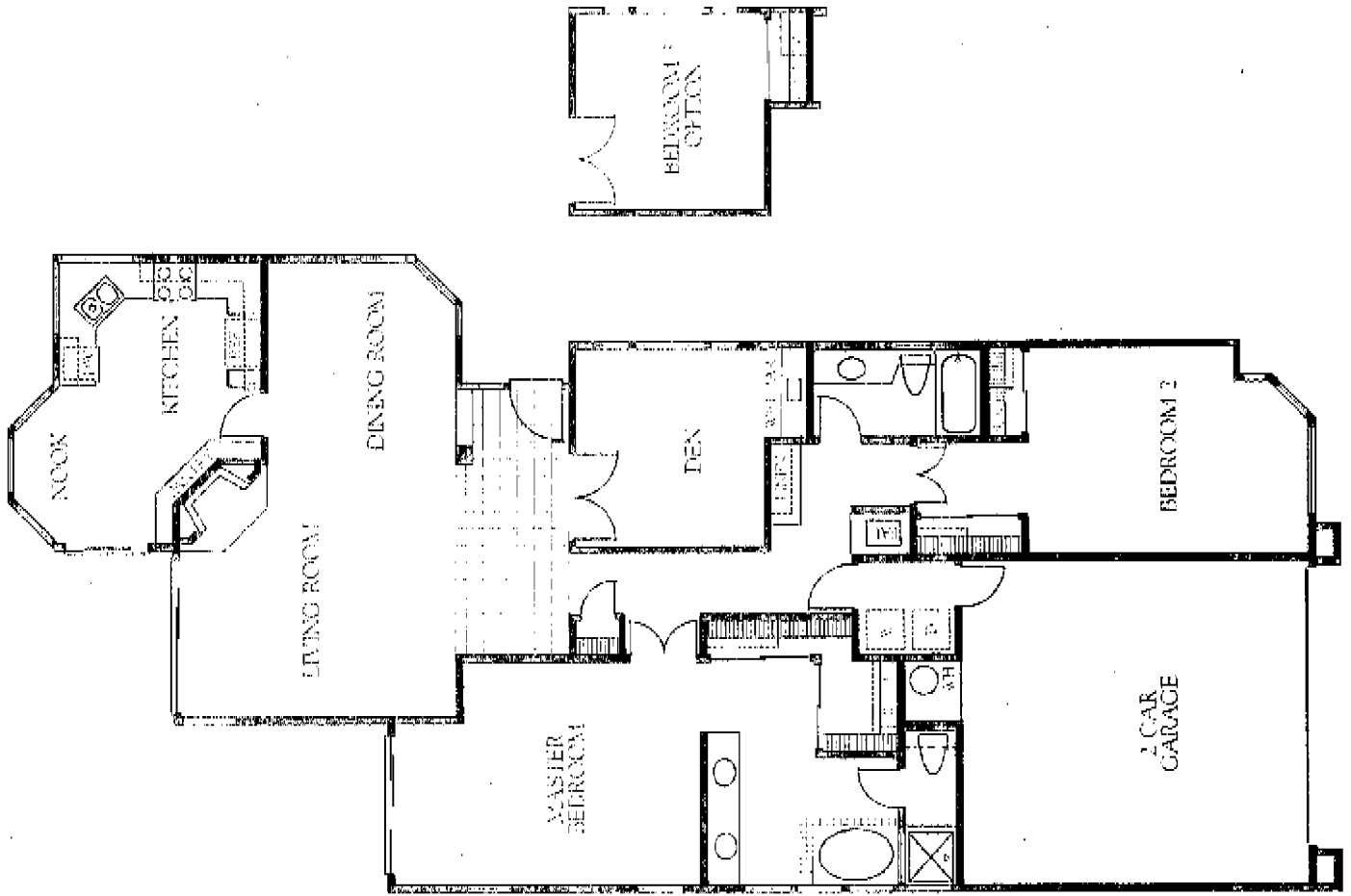
TheButeCorporation

HOME CAPITAL CORPORATION

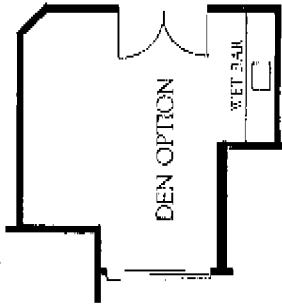
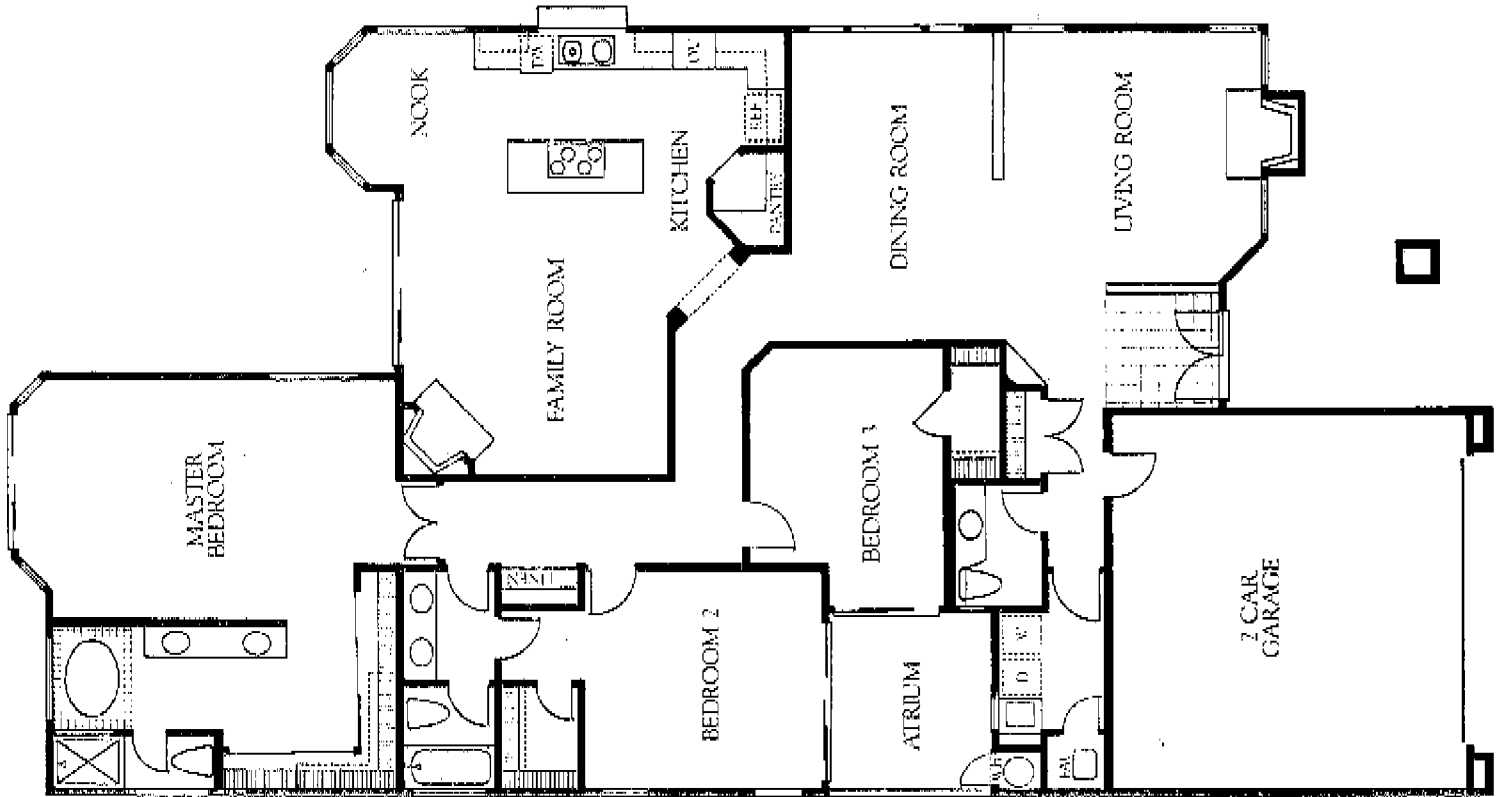
Esquire is a joint venture between The Bute Corporation and Home Capital Corporation, a subsidiary of Home Federal Savings and Loan.



THE PEARL • Plan 1  
2 Bedrooms, Den, 2 Baths  
1778 Square Feet



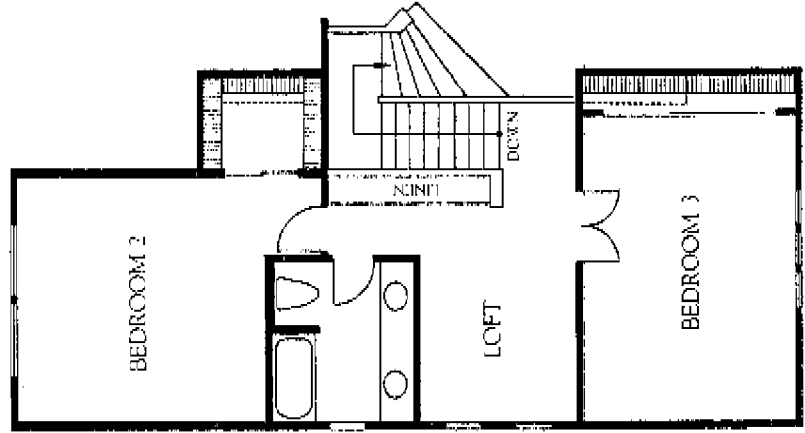
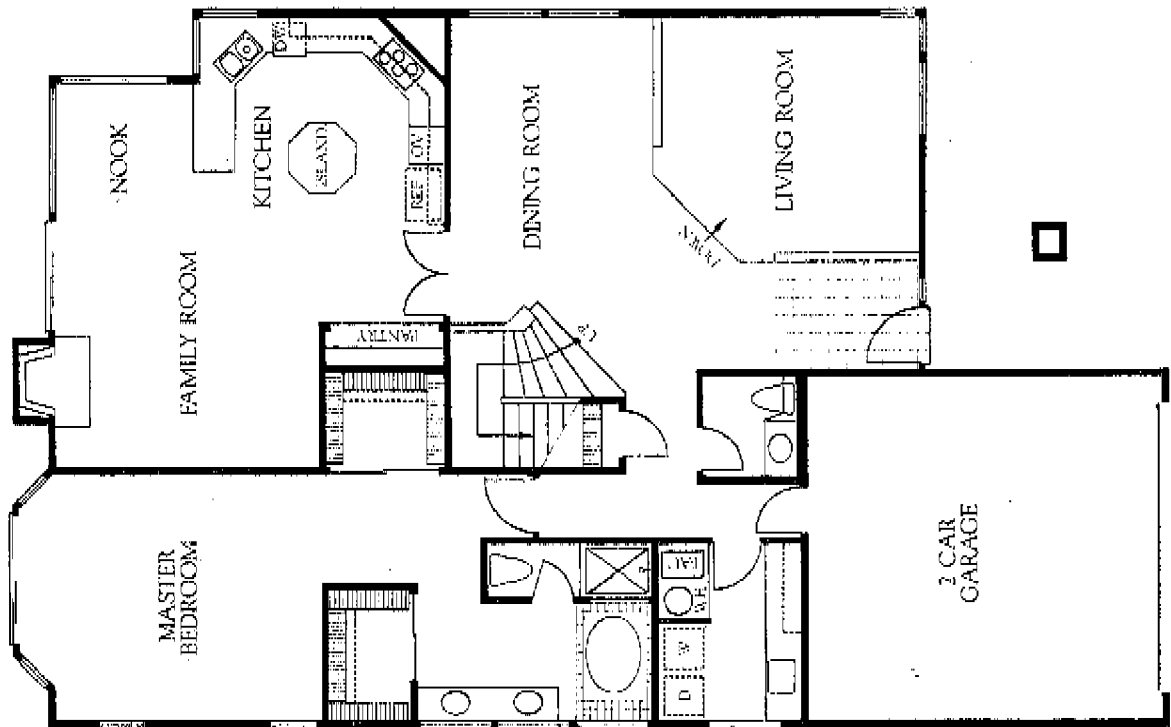
**THE EMERALD • Plan 2**  
**3 Bedrooms, Family Room, 2 1/2 Baths**  
**2314 Square Feet**



(AS SHOWN IN MODEL)

THE SAPPHIRE • Plan 3

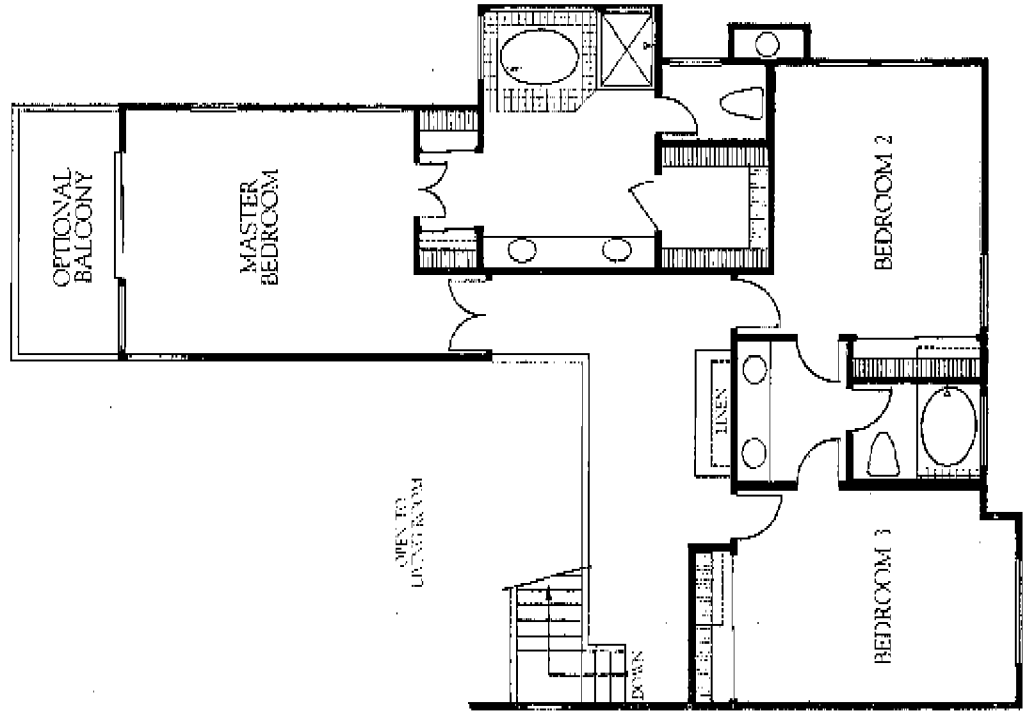
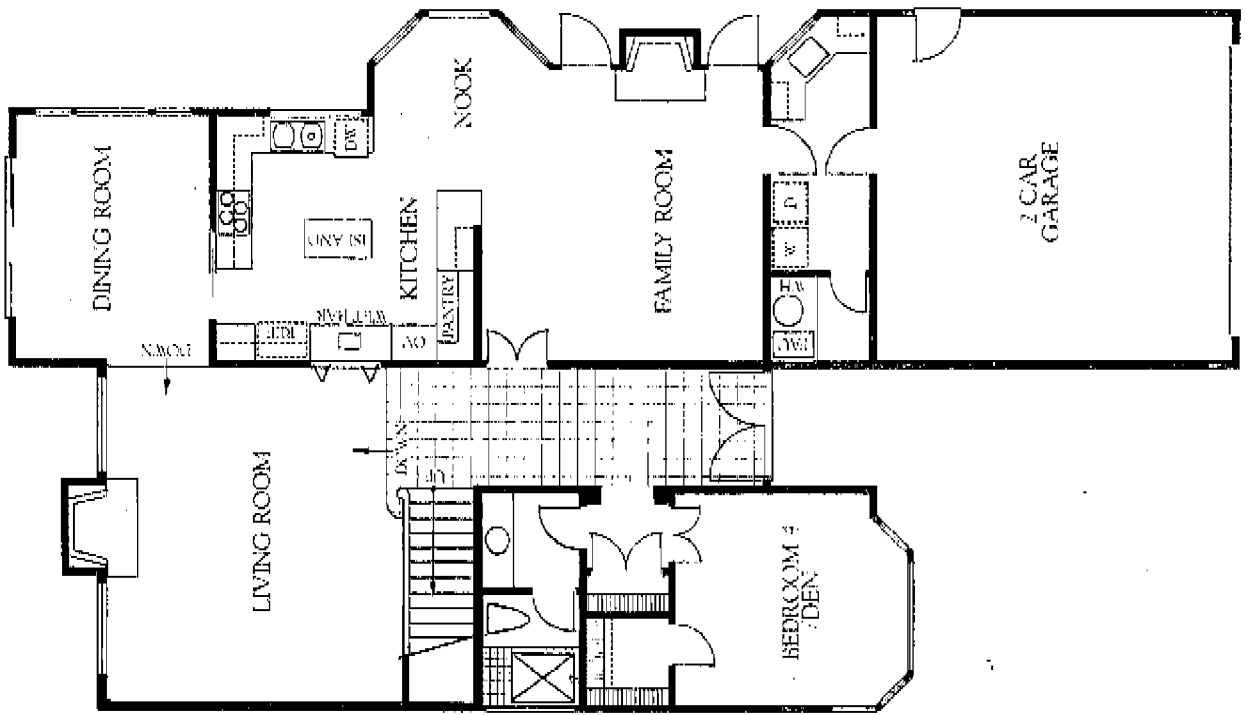
3 Bedrooms, Loft, Family Room, 2 1/2 Baths  
2635 Square Feet



UPPER LEVEL



**THE DIAMOND • Plan 4**  
 4 Bedrooms, Family Room, 3 Baths  
 2872 Square Feet



UPPER LEVEL