

Felicita Palms



Felicita Palms

2031 Felicita Road • Escondido, CA 92025 • (760) 747-7377

Plan 1

One Story, 3 Bedrooms, 2.5 Baths
3-space garage, approximately 2,202 sq. ft.

Lot 2	SOLD
Lot 6	\$ 669,990.00
Lot 9	SOLD
Lot 10	\$ 669,990.00
Lot 11	\$ 664,990.00

Plan 2

Two Story, 4-6 Bedrooms or 4 Bedrooms, Loft, and Bonus Room,
2.5 Baths, 3-space garage, approximately 2,808 sq. ft.

Lot 1	SOLD
Lot 3	SOLD
Lot 5	\$ 745,990.00
Lot 7	\$ 725,990.00
Lot 8	SOLD

Prices, features, design and specifications may be subject to change without prior notice.



April 28, 2006

ARTFULLY APPOINTED

Appealing Exteriors

Highly customized architectural elevations in Craftsman Cottage and early Spanish with inviting exterior color palette highlighted with stone and wood accents
 Charming porches, columns and shutters
 Five-resistant concrete tile roofing in coordinated styles and colors
 Elegant 8 foot entry doors with oil-rubbed bronze/split interior chrome hardware
 Fully finished three-space garage with automated raised-panel steel roll up door
 Gas stub-out for BBQ

Stylish Interiors

Woodburning fireplace with gas log lighter and media niche in family room
 Plush carpeting in designer-selected shades
 Raised panel interior doors with polished chrome hardware
 Rounded bullnose corners
 Voluminous 9 ft. ceilings downstairs/upstairs
 Decorative lighting fixtures
 Decora® silent touch light switches
 Pre-wiring for telephone and cable TV in family room, all bedrooms, den/loft/tech center
 Graceful pedestal sink in powder room
 Easy-care cultured marble vanity tops in secondary baths
 Interior laundry room with storage cabinets

Gourmet Kitchen

Classic 6" x 6" ceramic tile countertops
 Fine natural Beech cabinetry
 Quality appliances
 -Gas cooktop
 -Self-cleaning electric oven
 -Multi-cycle dishwasher
 -Microwave oven
 Plumbed for icemaker
 Spacious pantry
 Charming breakfast nook

Elegant Master Suite

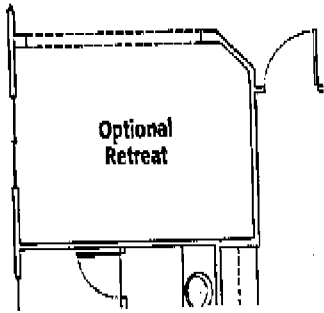
Generous walk in closet
 6" x 6" ceramic tile vanity top with dual vitreous china basins
 Decorator chrome faucets
 Combination Roman tub/shower

Design Assistance

Professional design consultants will discuss all available options and upgrades during your personal design appointments.

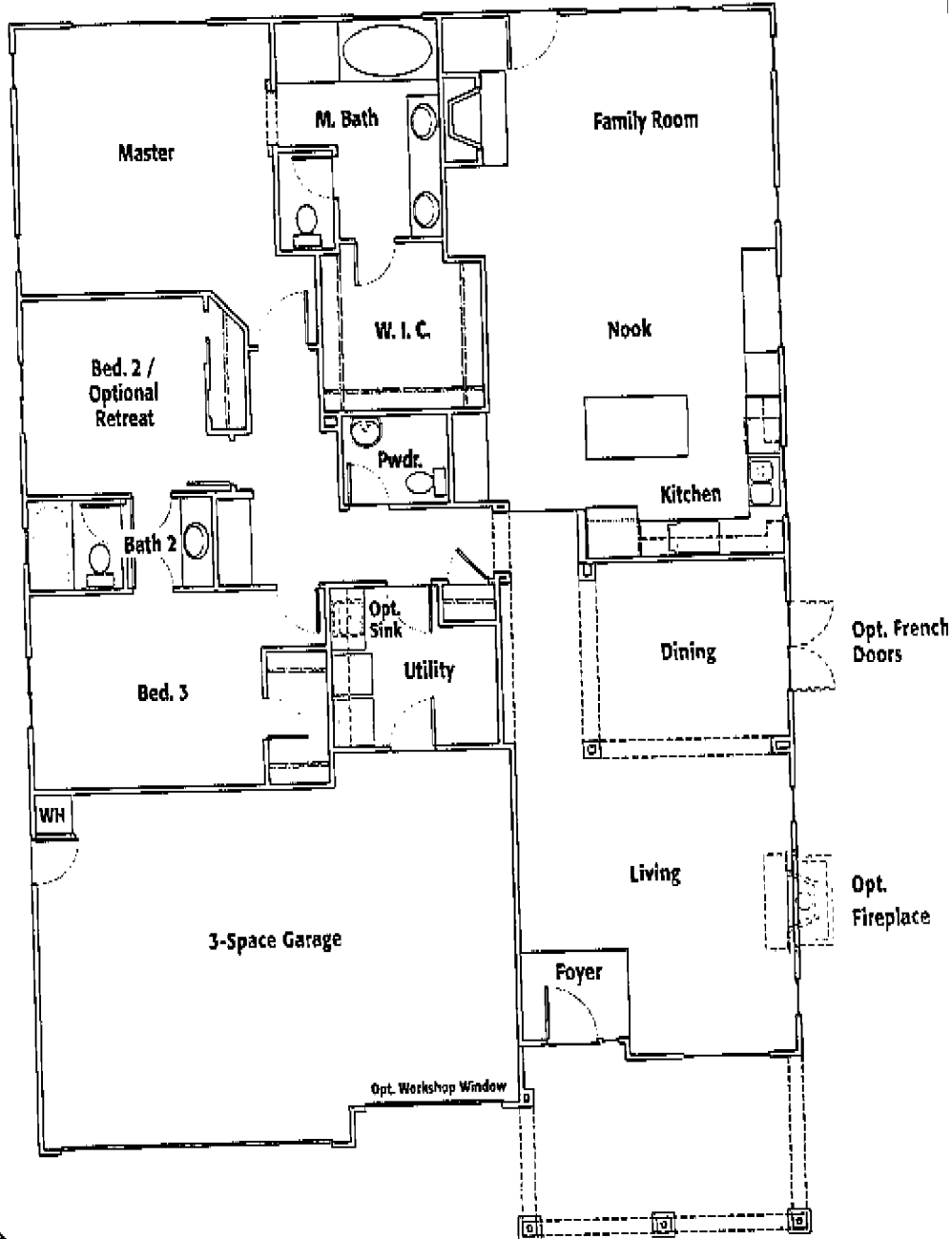
Personalizing Options Include

Custom cabinet choices
 Decorative handrails
 Designer flooring
 Home theater and security systems



PLAN 1

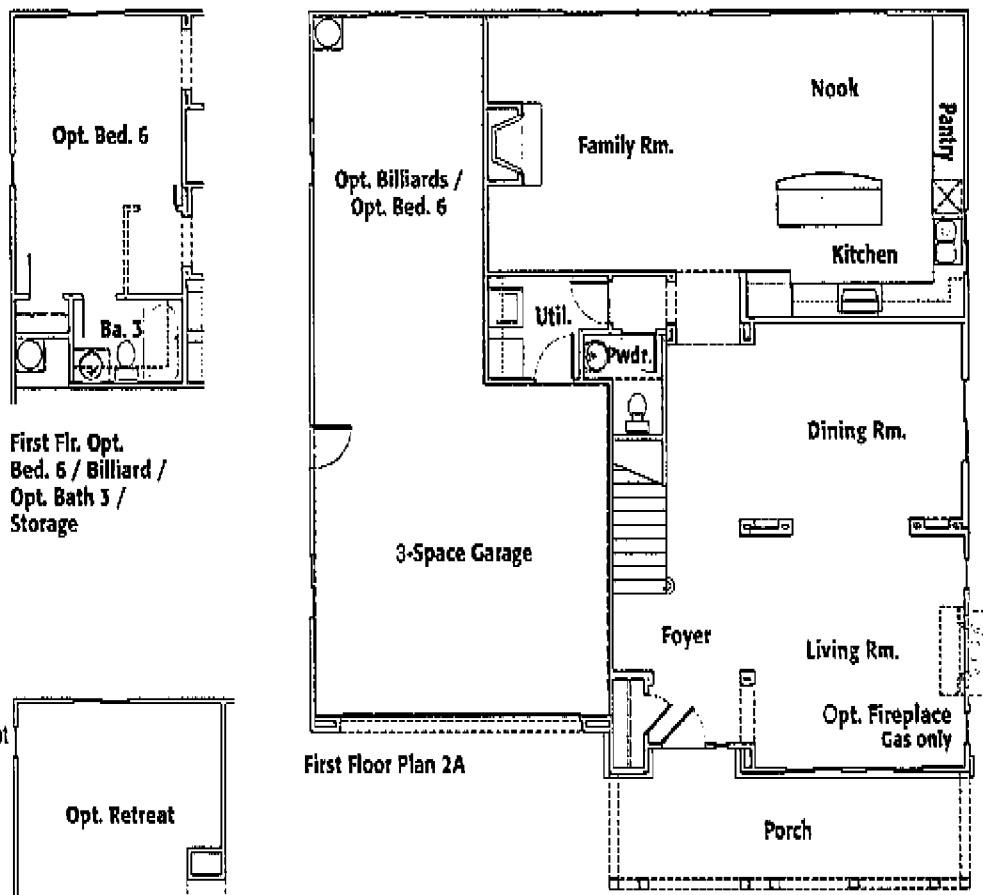
- 2,202 square feet
- 1 story
- 3 bedrooms
- 2.5 baths
- 3-space garage



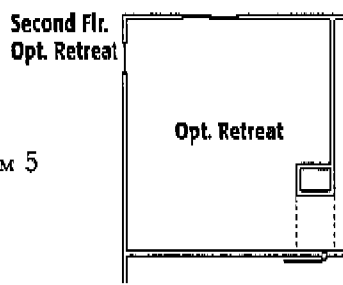
ELEVATION 1A



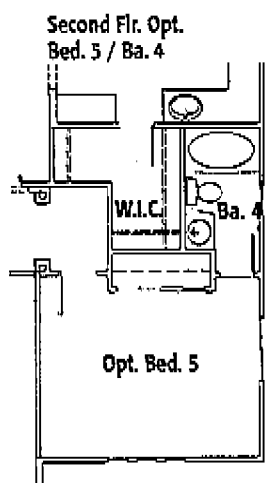
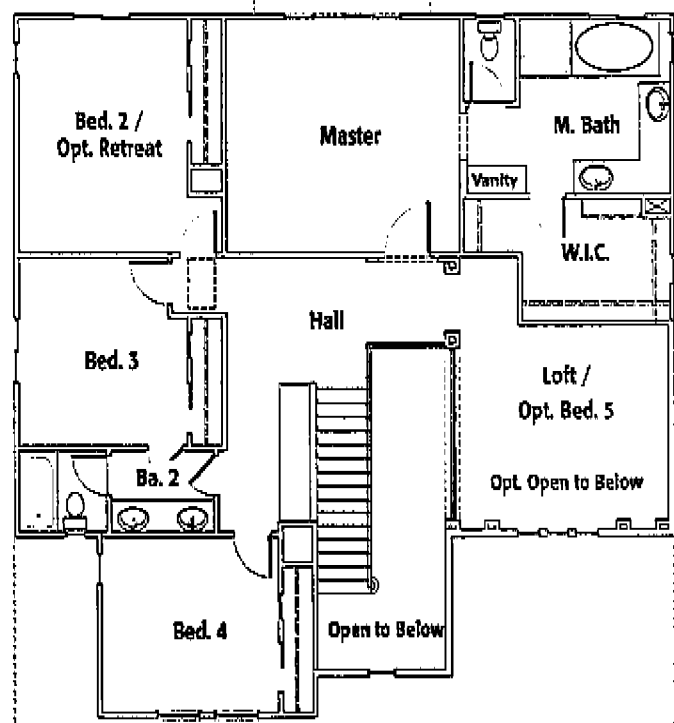
ELEVATION 1B



First Flr. Opt. Bed. 6 / Billiard / Opt. Bath 3 / Storage



Opt. Deck Second Floor Plan 2A



PLAN 2

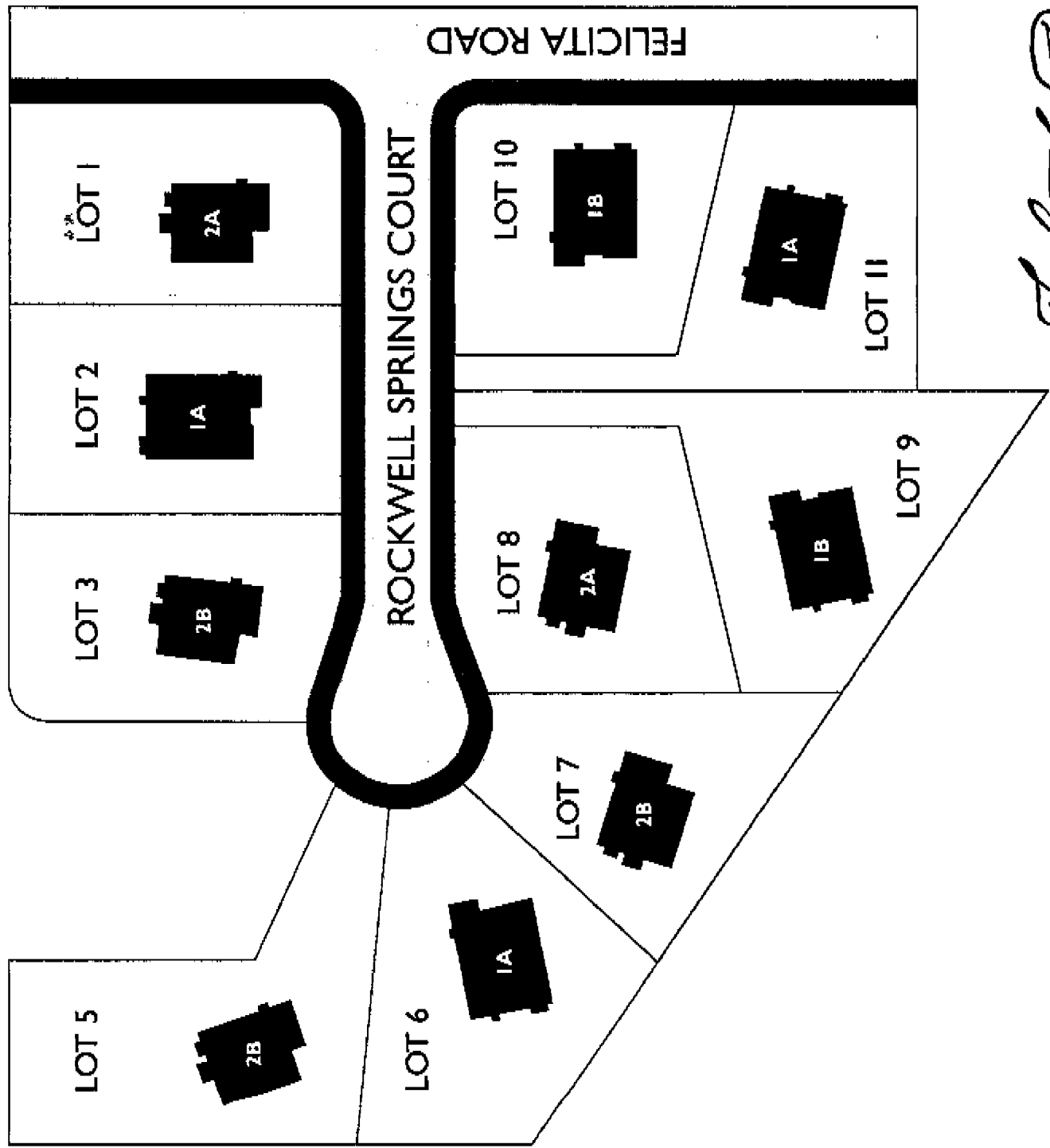
- 2,808 SQUARE FEET
- 2 STORY
- 4 BEDROOMS
- OPTIONAL LOFT/BEDROOM 5
- 2.5 BATHS
- 3-SPACE GARAGE



ELEVATION 2A



ELEVATION 2B

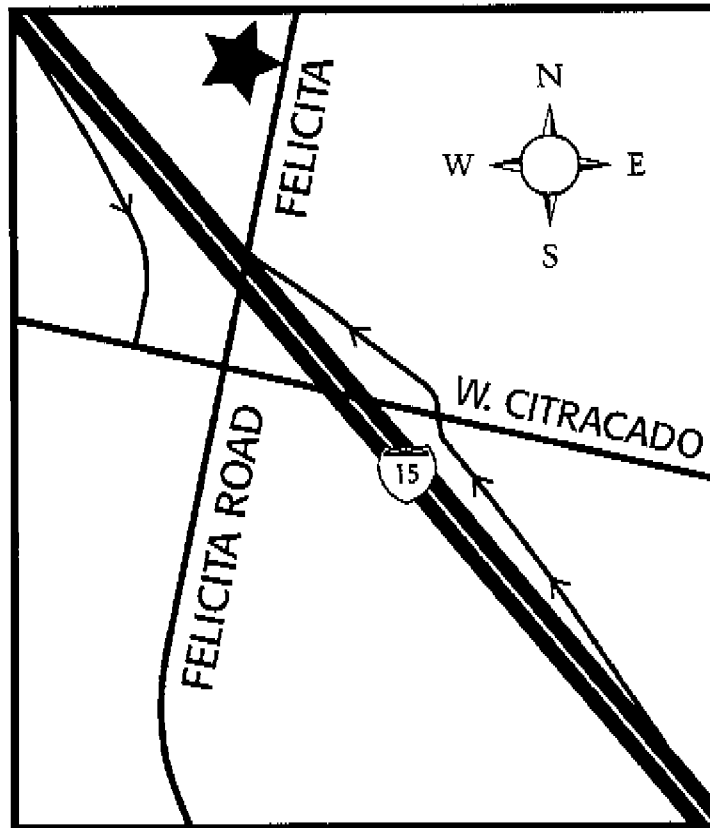


Felicita Palms

2031 Felicity Road • Escondido, CA 92025
(760) 747-7377 • Fax: (760) 747-7387



Prices, design, materials and specifications subject to change without notice.



Felicita Palms

2031 Felicity Road
Escondido, CA 92025
(760) 747-7377
Fax: (760) 747-7387

