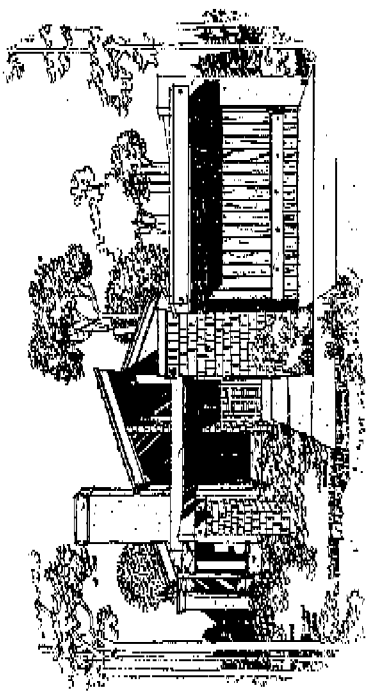


# CATALINA

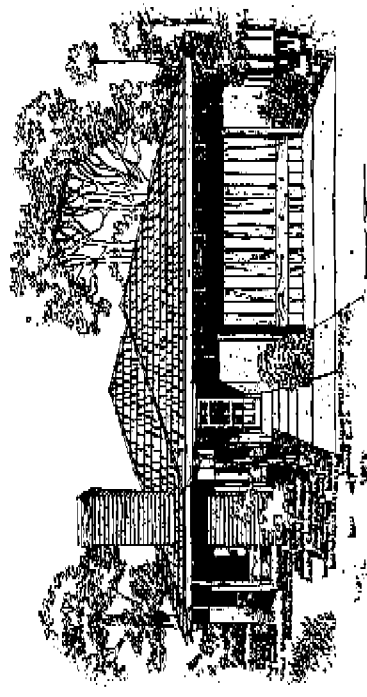
## 7601-A

Here's a home where you can live life for all it's worth. Contemporary beauty. Clean design. Shake shingles scale to a soaring peak. Exposed beams and a distinctive use of glass accentuate a feeling of unlimited space. This Catalina model means years of happy living for you and your family. (An alternate Spanish frontal treatment is available (7601-A-1). Ask your salesperson for more information.)



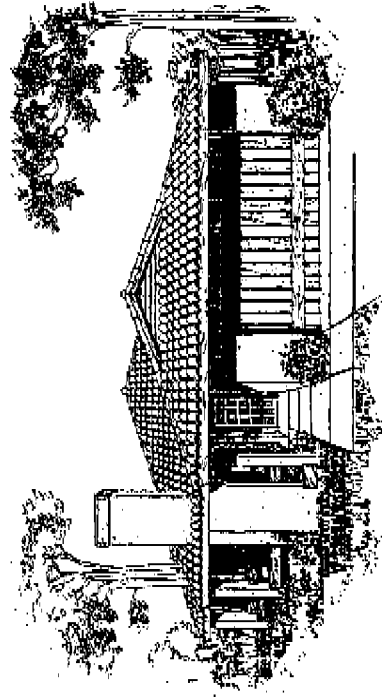
## 7601-B

When you'd rather be home than anywhere else, this is the home. With an area for a flower garden along the walkway. A sloping shake shingle roof. A simple wooden colonnade. A brick fireplace lends warmth and grace inside and out. Staying at home means staying happy in this lovely version of the Catalina.



## 7601-C

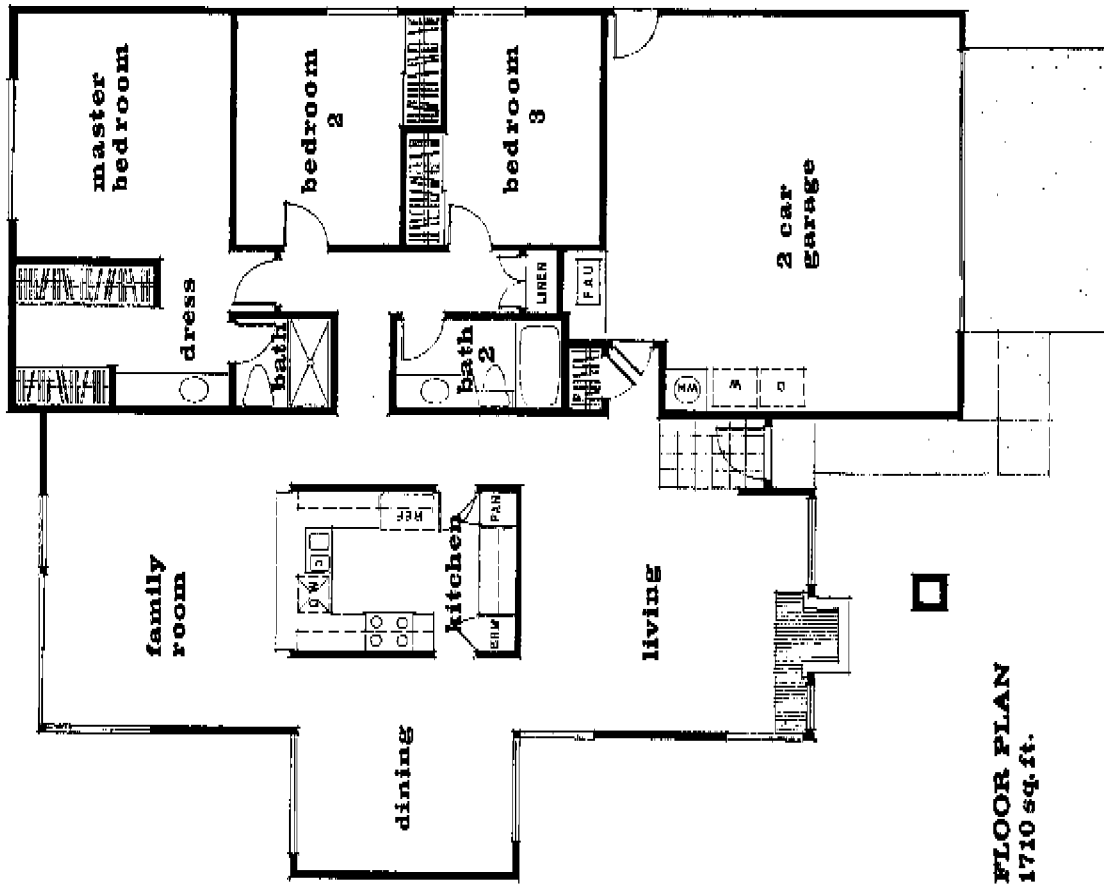
Southern California's Spanish heritage in splendid form. This home captures the elegant essence of a secluded hacienda. Vivid and bright roof tiles blend with cool sparkling stucco. A palacio column frames the wood paneled doorway. And a slender niche arcs gracefully. Your lifestyle here will be a polished reflection of a magnificent era.



# Greens **CATALINA** **7601**

Three bedrooms, 2 baths, 1,710 square feet to let you achieve the lifestyle you've always dreamed about. Living room, dining room and family center make the best use of wide-open space. And the island kitchen is a combination of efficiency and homemaking luxury. This home has room enough for everything you like to do . . . and enough left over for your very necessary privacy.

Due to changes and improvements resulting from the Avco Community Developers, Inc., continuing research and development program, we reserve the right to alter product or design without notice or obligation, prior to completion of unit and/or close of escrow.



**FLOOR PLAN**  
1710 sq. ft.

