





Renderings are artist's conception.

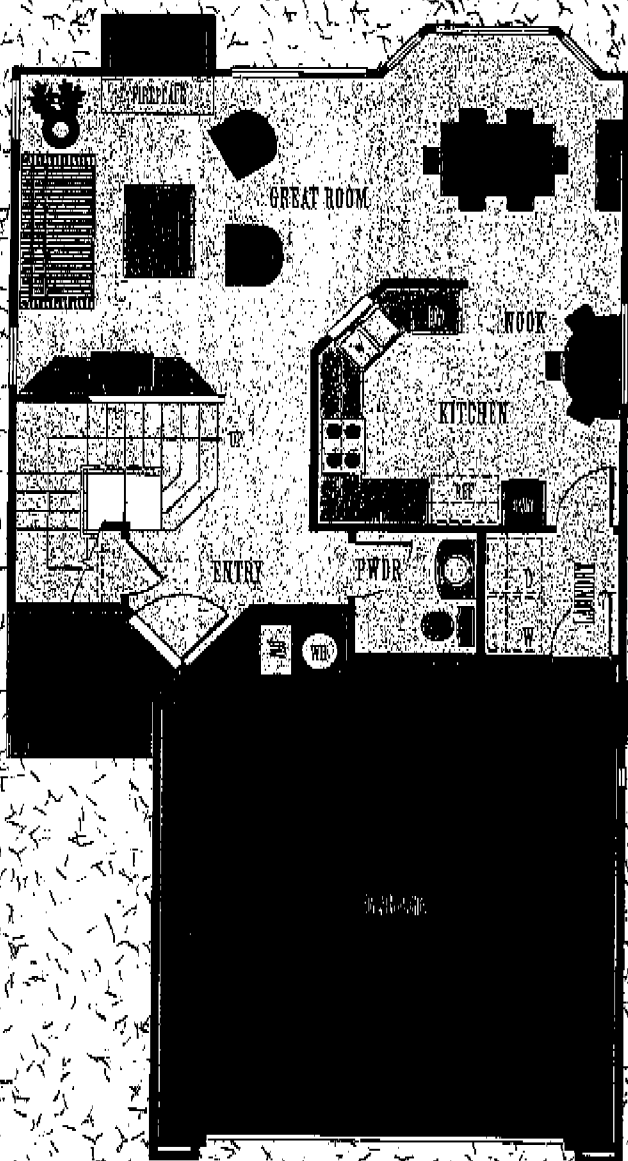
# PLAN ONE THE SUNFLOWER

3 Bedrooms, 2 1/2 Baths  
1,490 Square Feet

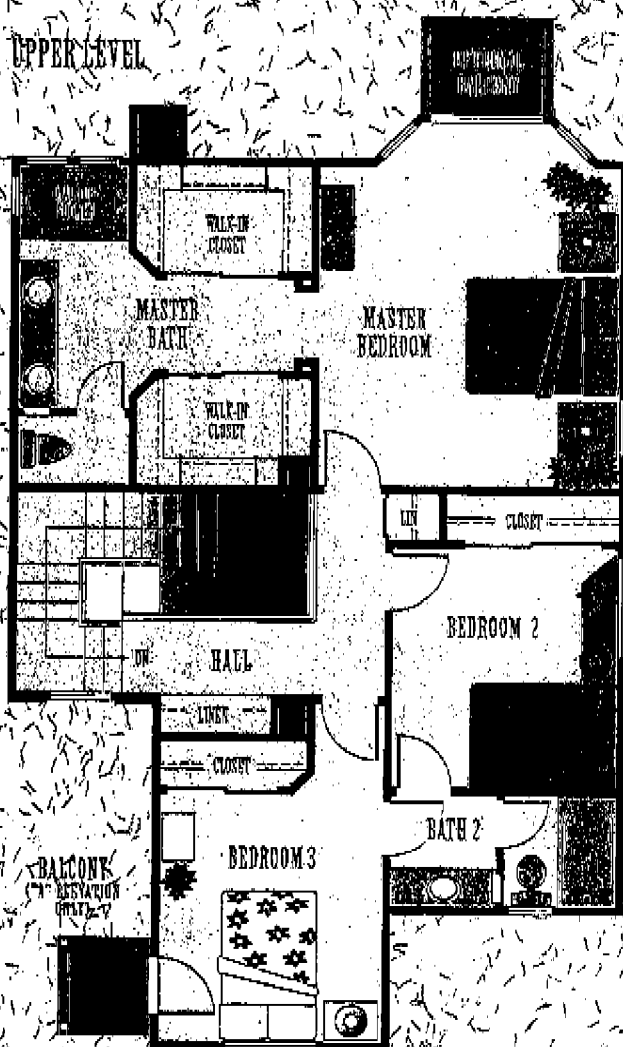
This charming two-story design sets the stage for gracious living. The great room offers a cozy fireplace to curl up by, while a cheery bay window bathes the dining area in natural light. The kitchen features a distinctive arched pass-through. Beneath the stairs, there's a hidden storage area. Upstairs, the bay window

in the master suite includes the option of adding a window seat, for quiet reading and relaxing. An optional balcony is also available. The luxurious master bath features an enticing oval tub and large his-and-her walk-in closets. A convenient, shared bath links two other bedrooms.

## LOWER LEVEL



## UPPER LEVEL



Furniture shown on floor plans is not included in purchase price.



Renderings are artist's conception.

20R

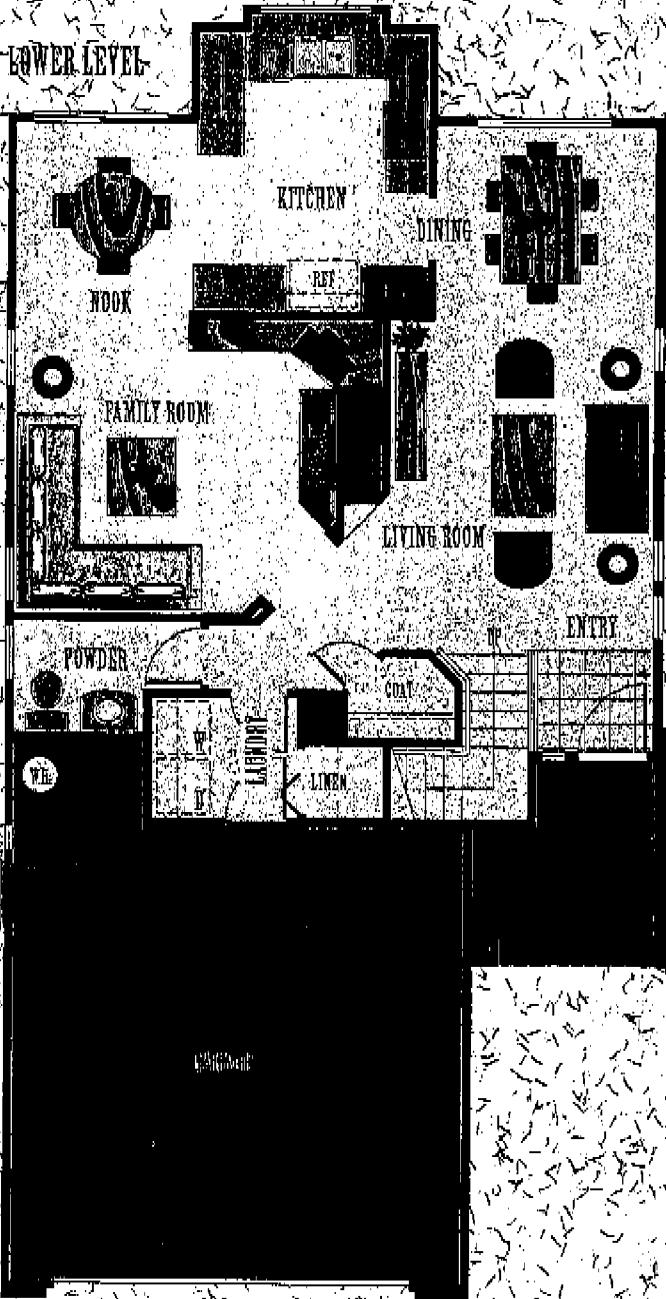
# PLAN TWO THE MARIGOLD

4 Bedrooms, 2 1/2 Baths  
1,754 Square Feet

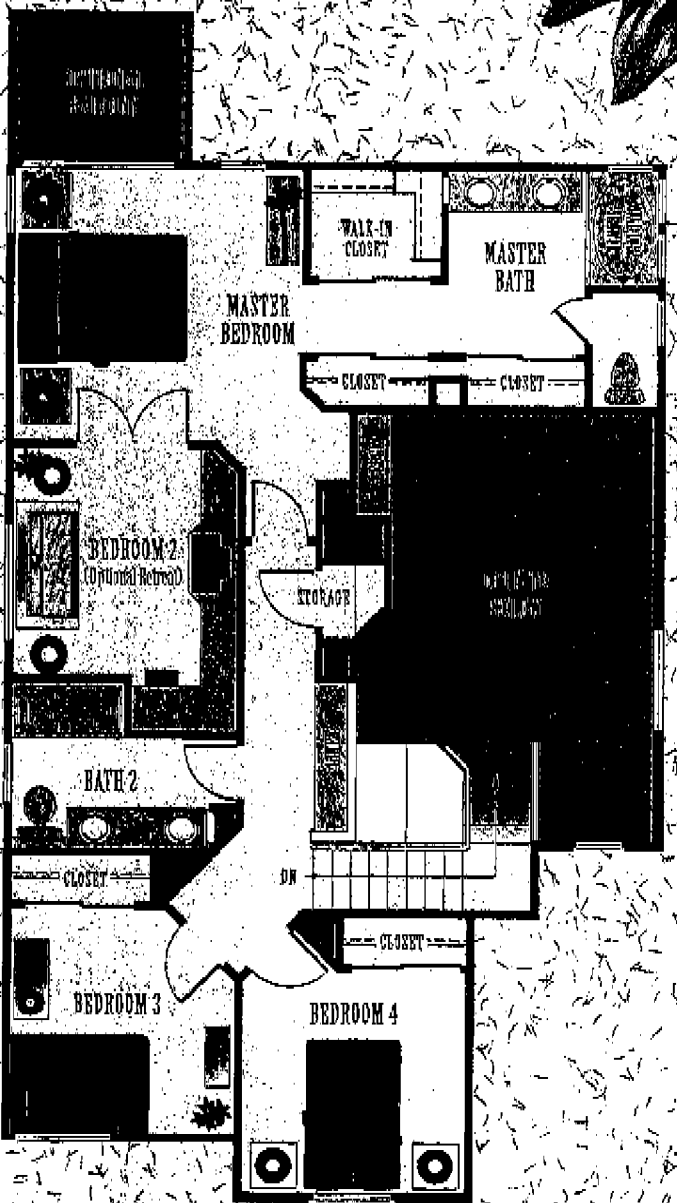
This plan's distinctive design features a compelling full-length view of the house from the entry. A special garden window above the kitchen sink overlooks the backyard. Nearby, a nook presents a comfortable spot for casual dining. A fireplace provides a glowing focal point for family room activities. The lower

level also offers a convenient laundry room and walk-in linen closet. Upstairs, there's ample linen and storage space. The luxurious master suite provides generously-sized dual closets, and the option of converting an adjacent bedroom into an intimate master retreat.

LOWER LEVEL



UPPER LEVEL



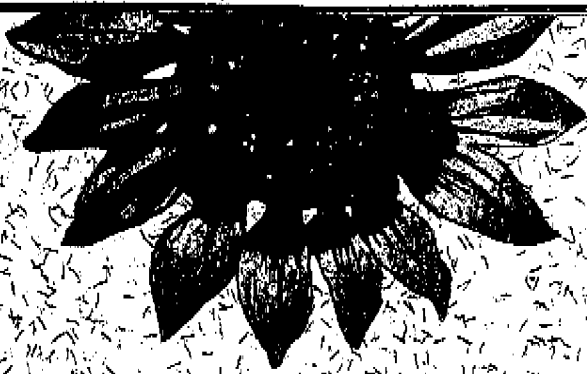
Furniture shown on floor plans is not included in purchase price.





Renderings are artist's conception.

ACR



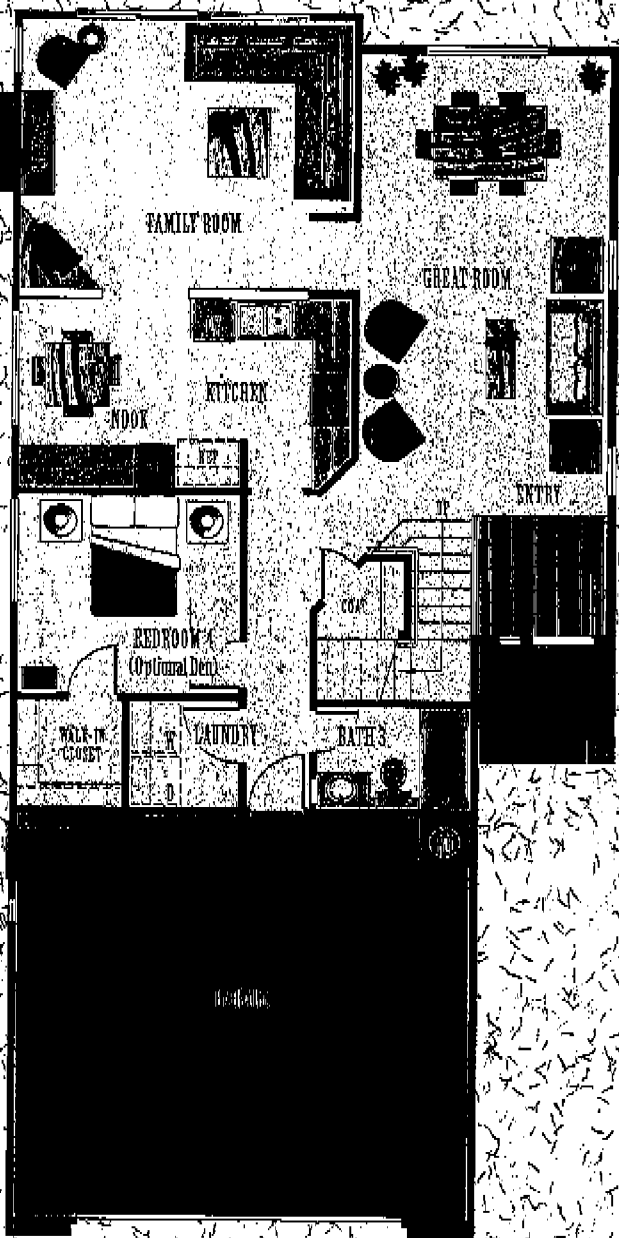
# PLAN THREE THE GOLDENROD

4 Bedrooms, 3 Baths  
1,928 Square Feet

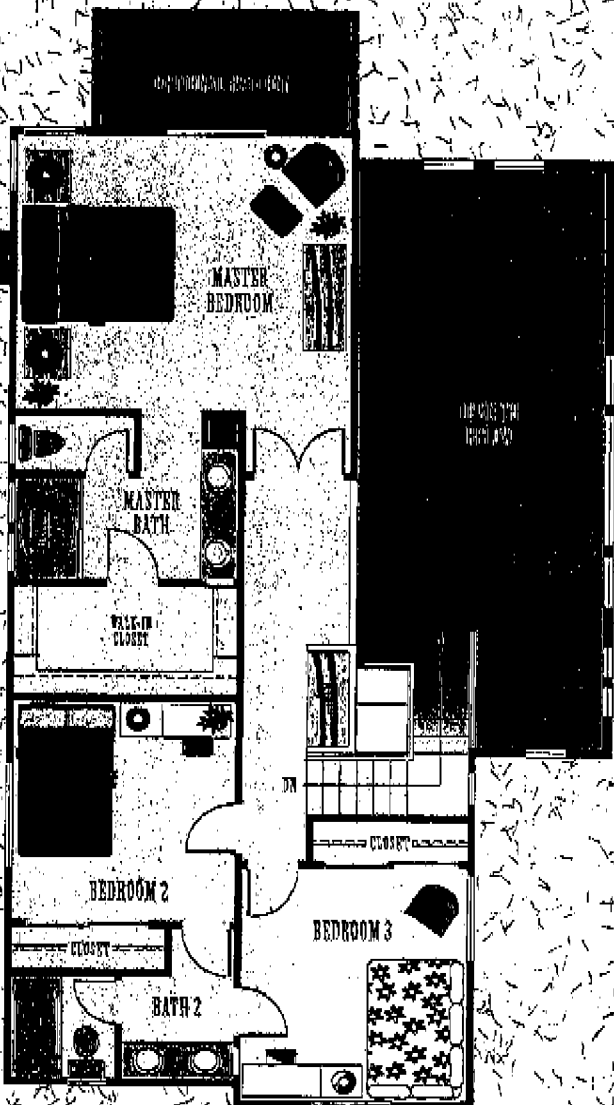
Designed for active families, this plan provides all the comforts of home, and then some. Throughout the house, bright windows and warm sunshine are in splendid abundance. Just off the kitchen, the spacious family room features a handsome fireplace and sliding glass doors. A private downstairs

bedroom can be converted to an optional den. The upstairs hall presents towering views of the great room below and central linen storage. In the lavish master suite, an optional balcony may be added to create an even grander retreat. The master bath offers an extra-large, walk-in closet.

## LOWER LEVEL



## UPPER LEVEL



Furniture shown on floor plans is not included in purchase price.

## FEATURES

### KITCHENS

- General Electric self-cleaning oven/range in black or white
- General Electric microwave oven with built-in exhaust hood in black or white
- General Electric multi-cycle dishwasher in black or white
- Beautiful oak veneer cabinetry in white wash or honey finish
- Custom ceramic tile countertops
- Dual compartment porcelain on steel sink
- Moen chrome faucet
- Attractive vinyl flooring in a choice of colors
- Contemporary recessed can lighting over sink
- Built-in pantry for convenient storage space
- Sunny garden window (Plans 2)
- Elegant luminous ceiling with wood trim to match cabinets
- Refrigerator area plumbed for ice maker
- Heavy duty Insinkerator disposal

### LUXURIOUS BATHS

- Crushed limestone oval tub with shower combination in master bath
- Custom oak veneer cabinetry in white wash or honey finish
- Dual china lavs in all master baths and some secondary baths (Plans 2 & 3)
- Stylish pedestal sinks in powder room (Plans 1 & 2)
- Durable simulated marble counter tops

### ADDITIONAL FEATURES

- Stylish country cottage exterior with concrete tile roof
- Raised panel solid eave entry door with distinctive brass hardware
- Dramatic volume ceilings in selected living areas (most plans)

- Custom ceramic tile entry
- Flush carpeting throughout living areas
- Rounded wall corners
- Decorator selected light fixtures
- Oak stair railings stained to match cabinets
- Woodburning fireplace with gas log lighter
- Abundant storage space
- Convenient interior laundry rooms with storage
- Architecturally specified exterior color palette

- Pre-wired for telephone and cable TV
- Two-car garage with roll-up door wired for electric opener
- Front yard landscaping and sprinkler system
- Return fencing between neighboring homes
- Illuminated address numbers

### WATER AND ENERGY SAVERS

- Gas forced air heating with thermostat control
- R-30 roof and R-13 exterior wall insulation
- Dual glazed windows throughout

### SAFETY FEATURES

- National Guardtarm security system
- Smoke detectors
- Locked mail boxes

McMillin homes are energy efficient and in total compliance with the State of California Energy Requirements as set forth by California Administrative Code 2-53, part 2, Title 24. In compliance with the energy budget requirements of Section 2-25351(a), Title 24 Code, the performance of any individual residence relative to the energy budget is available upon request. In an effort to continually improve our plans and designs, McMillin reserves the right to change features, plans and specifications without notice. Due to changing market conditions, McMillin makes no representation that the current plans and amendments represented by our models will be constructed on all lots of this subdivision. We also reserve the right to sell any portion of the remaining unpatented lots to another builder who will have the right to change floorplans. Heatherwood will be part of a Community Facilities District. Some public facilities may be funded by special assessments payable by all property owners. Ask sales personnel for information. Heatherwood is part of the Scripps Ranch Village Master Home Owners Association.