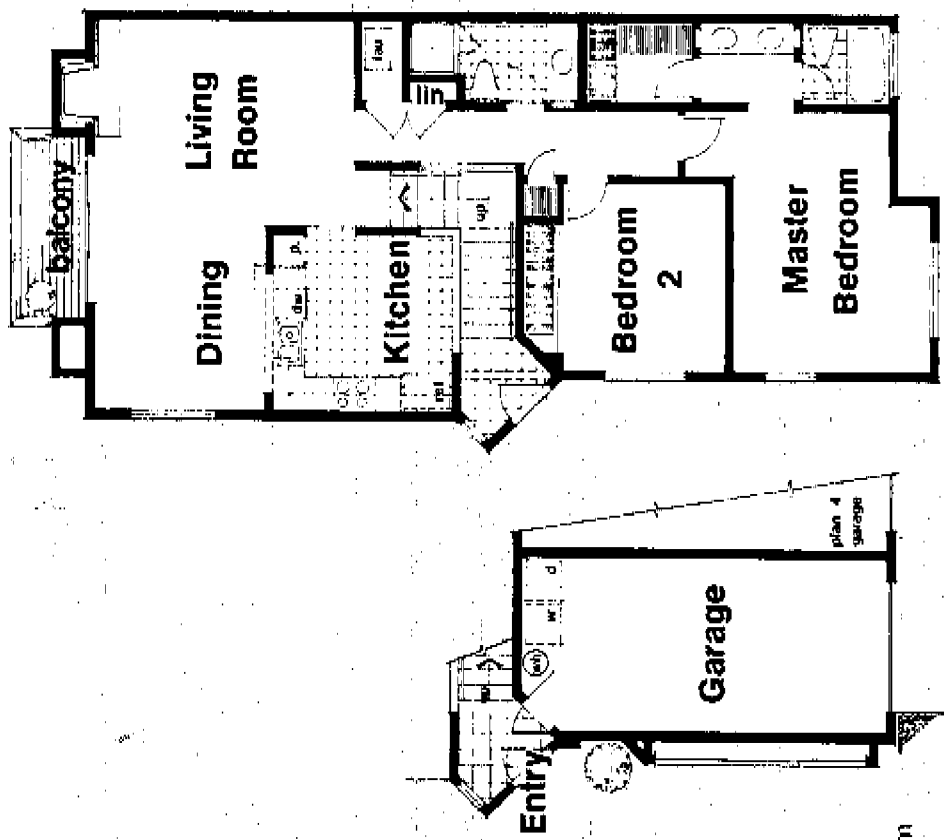


PLAN 3

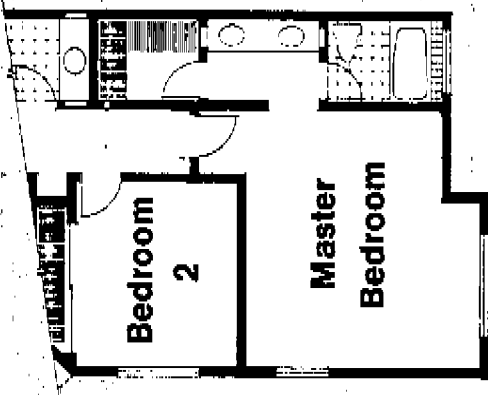
2 bedrooms, 2 baths, single level—
1,188 square feet

Enter the living room with its handsome wood burning fireplace. Other special amenities in this exciting plan include a balcony deck, oversized kitchen, passthrough counter from kitchen to dining area, and master bedroom suite with dressing area, private bath and walk-in closet. In Plan 3.1, the master bedroom, bath and dressing area are extended to provide even more living area (1,243 square feet total).



ground level

All renderings and floor plans are artists' conceptions and are not intended to be an actual depiction of the buildings, fencing, walks, driveways or landscaping.

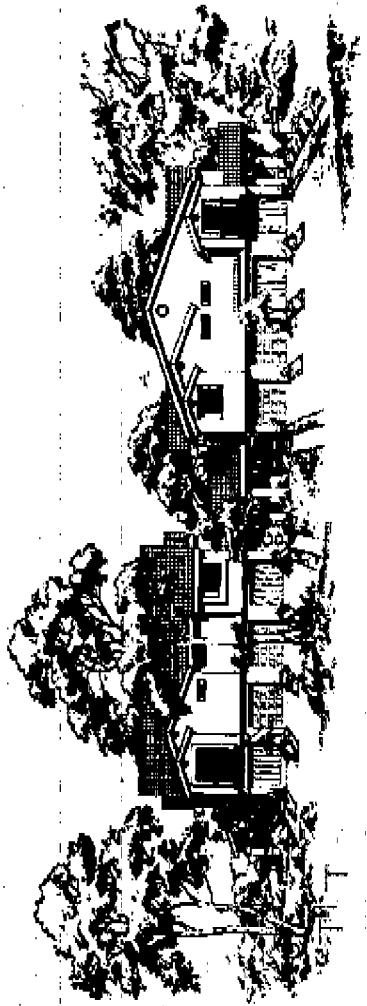


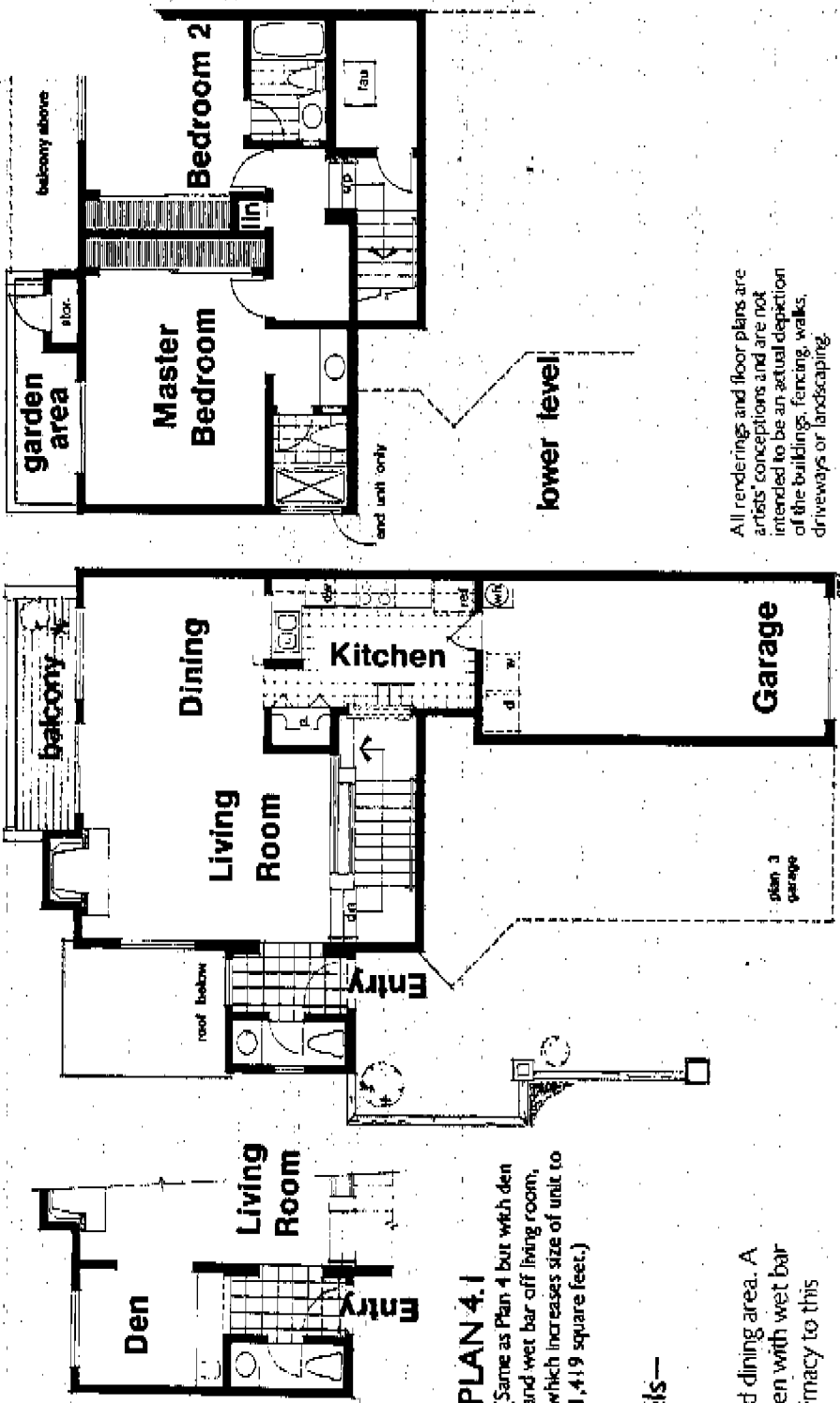
PLAN 3.1

(Same as Plan 3 except master bedroom, dressing area and bath are larger, increasing total living area to 1,243 square feet.)

Lomas Bernardo

CONDOMINIUM HOMES





PLAN 4

PLAN 4.1

(Same as Plan 4 but with den and wet bar off living room, which increases size of unit to 1,419 square feet.)

**2 bedrooms, 2½ baths, two levels—
1,340 square feet**

Formal entry opens to spacious living and dining area. A wood burning fireplace and, in Plan 4.1 a den with wet bar create a distinctive feeling of charm and intimacy to this plan.

The sleeping level features a large master suite with sliding glass door to a patio area. The secondary bedroom is also large and includes its own full bath. The addition of the den increases the living area of Plan 4.1 to 1,419 square feet.

All renderings and floor plans are artists' conceptions and are not intended to be an actual depiction of the buildings, fencing, walks, driveways or landscaping.

Lomas Bernardo

CONDOMINIUM
HOMES

