



monet
collection

PRELIMINARY

Continental
a D.R. Horton Company **Homes**

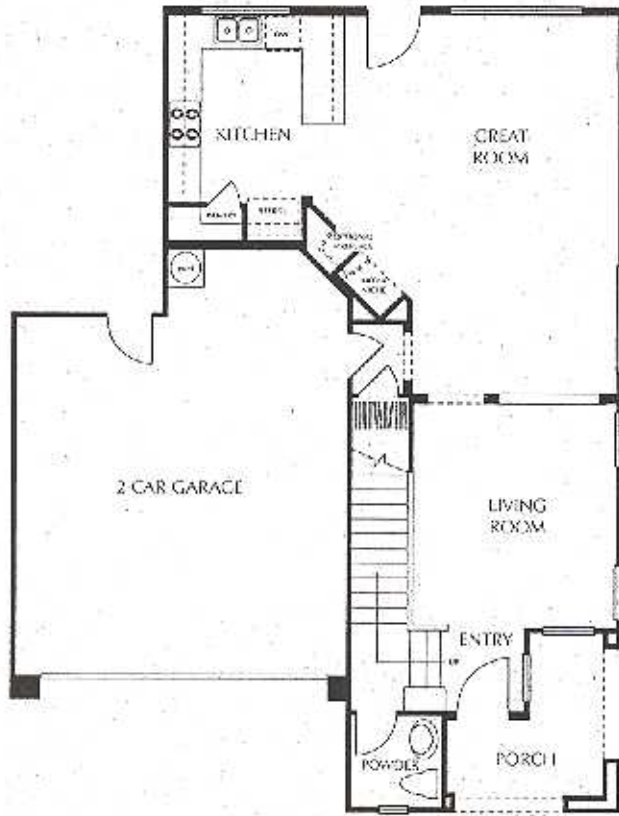


monet
collection
Plan One

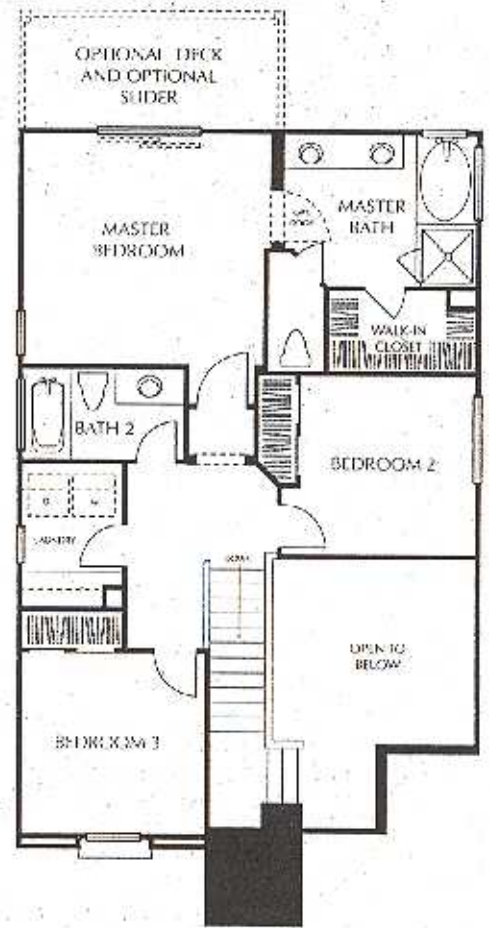
PRELIMINARY

1,603 SQUARE FEET • TWO STORY • 3 BEDROOMS • 2½ BATHS • 2-CAR GARAGE

OPTIONAL DECK AT MASTER



FIRST FLOOR



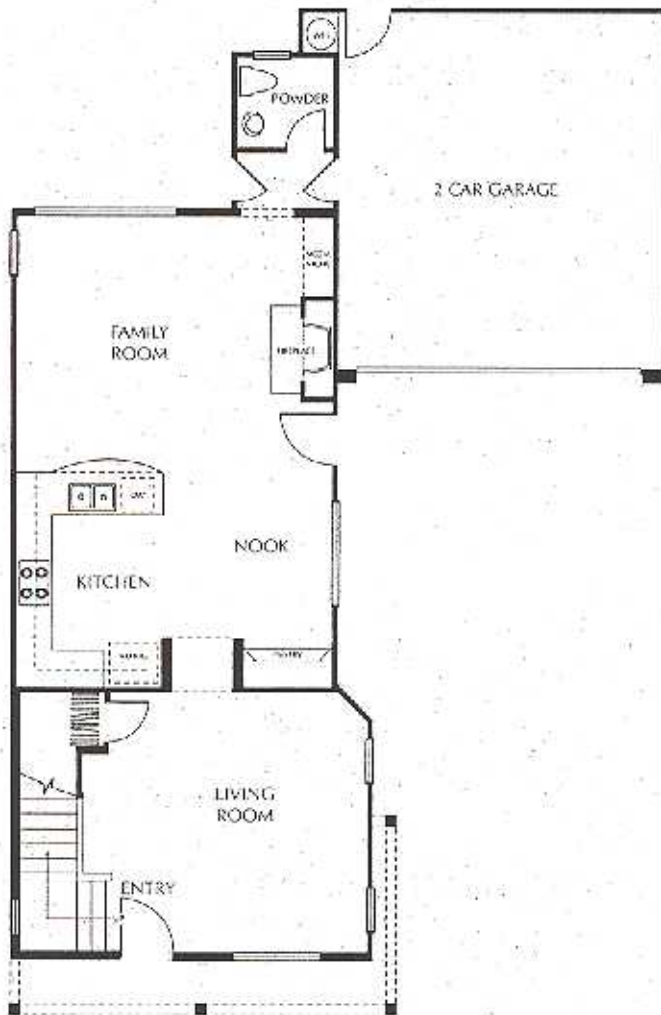
SECOND FLOOR



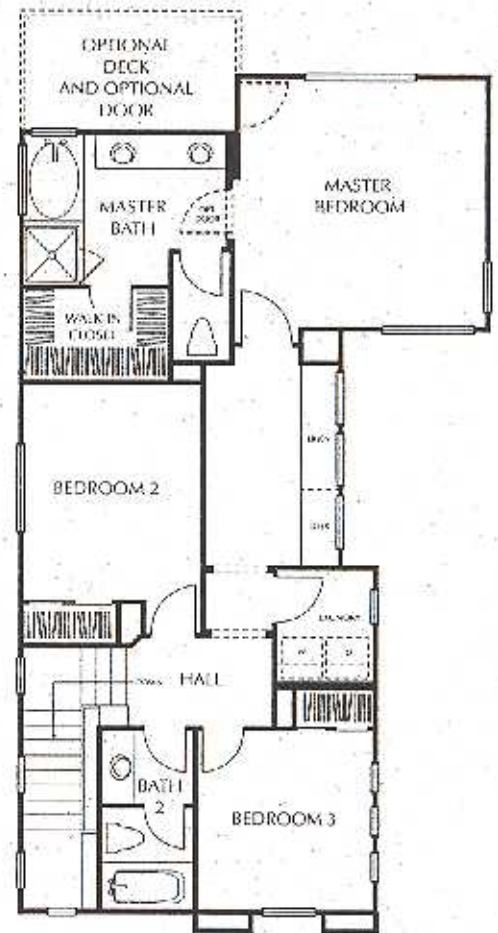
monet
collection
Plan Two

PRELIMINARY

1,803 SQUARE FEET • TWO STORY • 3 BEDROOMS • 2 1/2 BATHS • 2-CAR GARAGE
OPTIONAL DECK AT MASTER



FIRST FLOOR



SECOND FLOOR



monet
collection
Plan Three

PRELIMINARY

2,074 SQUARE FEET • TWO STORY • 4 BEDROOMS • 2 1/2 BATHS • 2-CAR GARAGE

OPTIONAL LOFT • OPTIONAL DECK AT MASTER



