

Travel to a place of wonder.

A place of beauty.

A place of distinction.

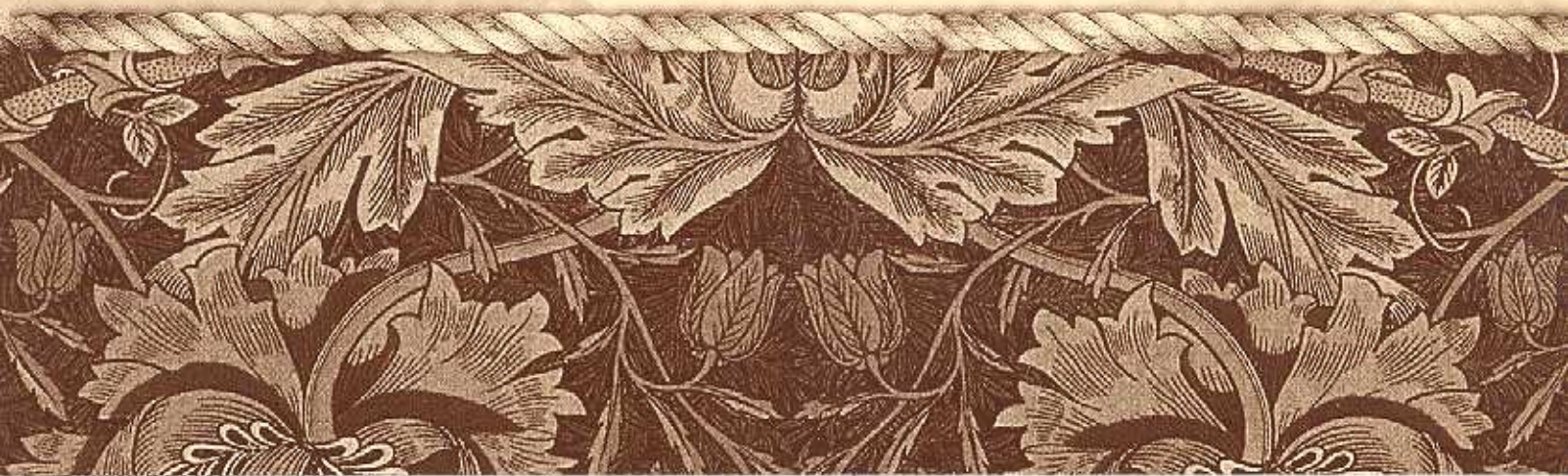
Travel to Montellano—a beautiful enclave nestled in the rolling canyons of Torrey Santa Fe.

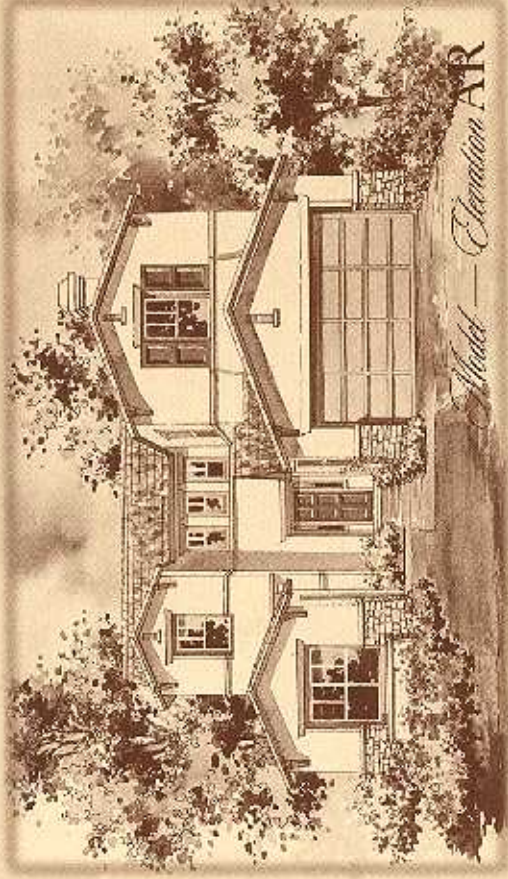
Here, you'll embrace the natural splendor of this picturesque landscape while enjoying the most modern conveniences of nearby city living.

Stunning new residences feature expansive homesites, innovative floorplans, and elegant architectural design in the midst of a tranquil setting near fine dining, shopping, and recreation.

Montellano—You can't imagine a more distinguished destination.

Montellano
at Torrey Santa Fe





Avalon Residence

Approximately 3,246 square feet

Four bedrooms

Four baths

Loft

Two-car garage

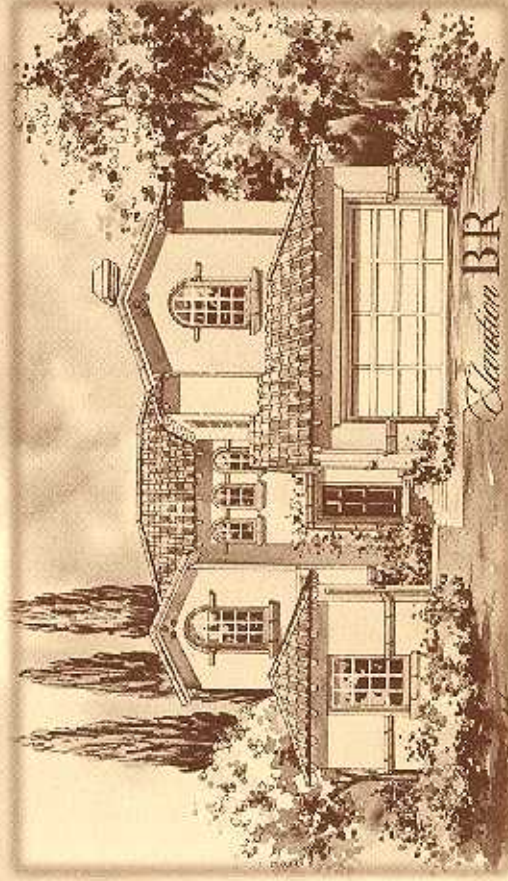
Optional office

Optional master retreat

Optional bedroom four

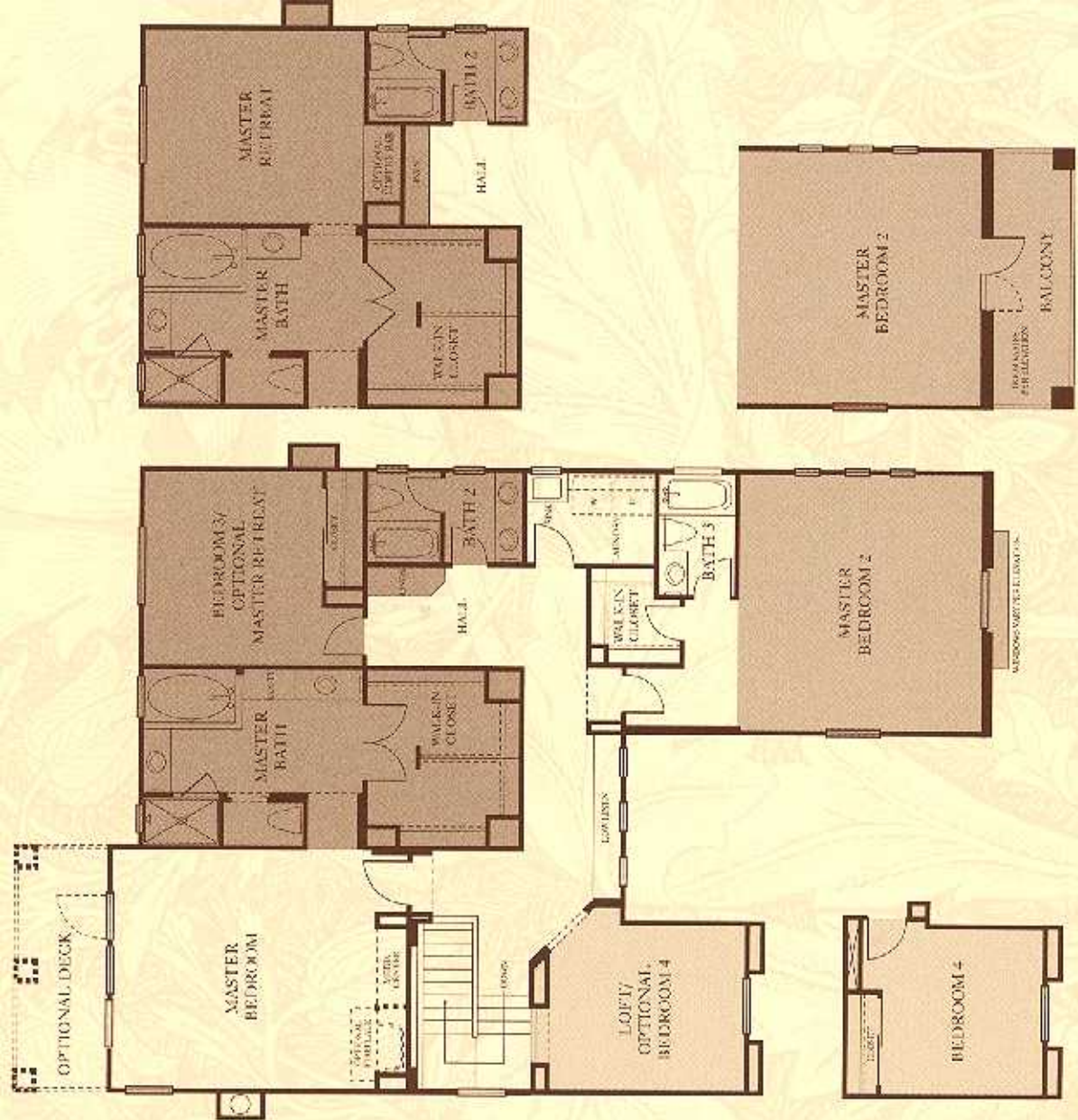
Optional balcony at master bedroom two

Optional deck at master bedroom

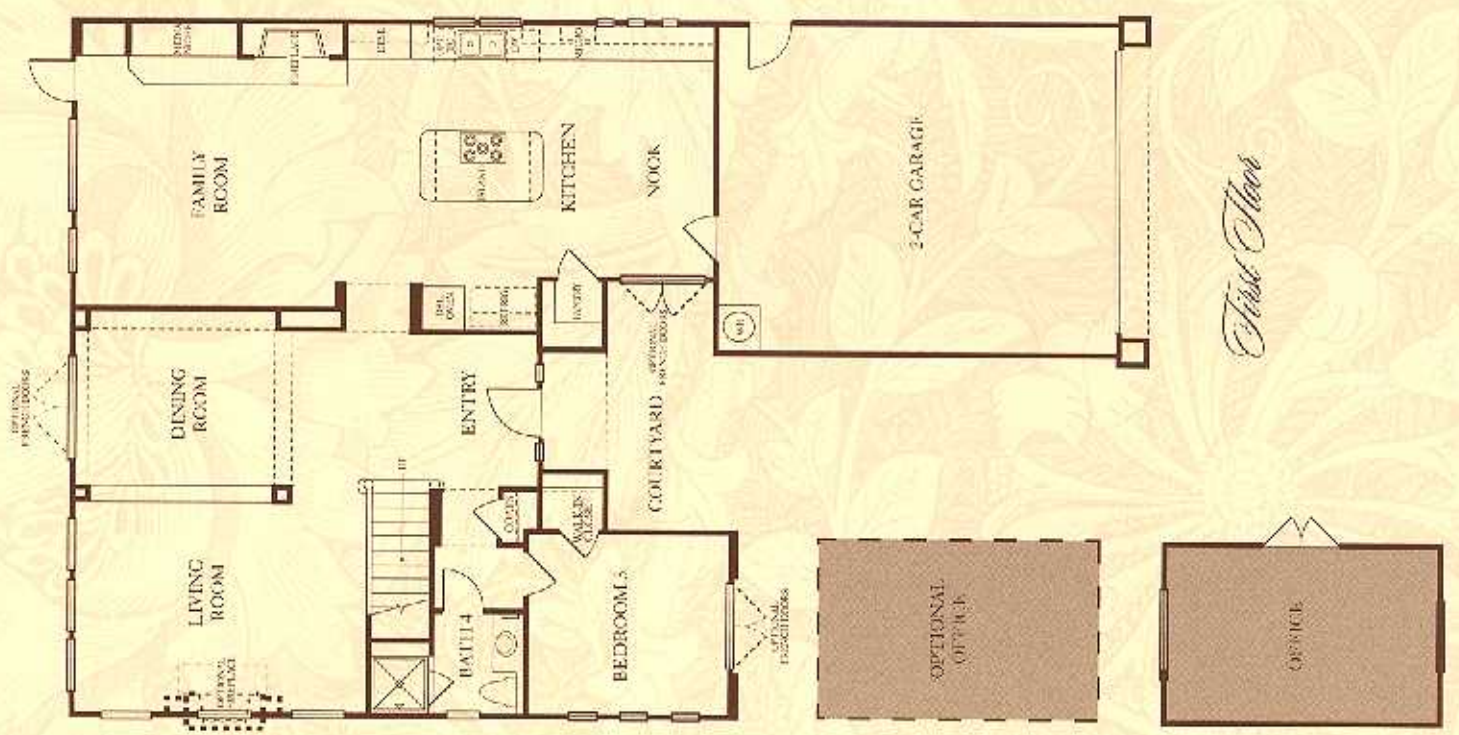


Artist's Illustration

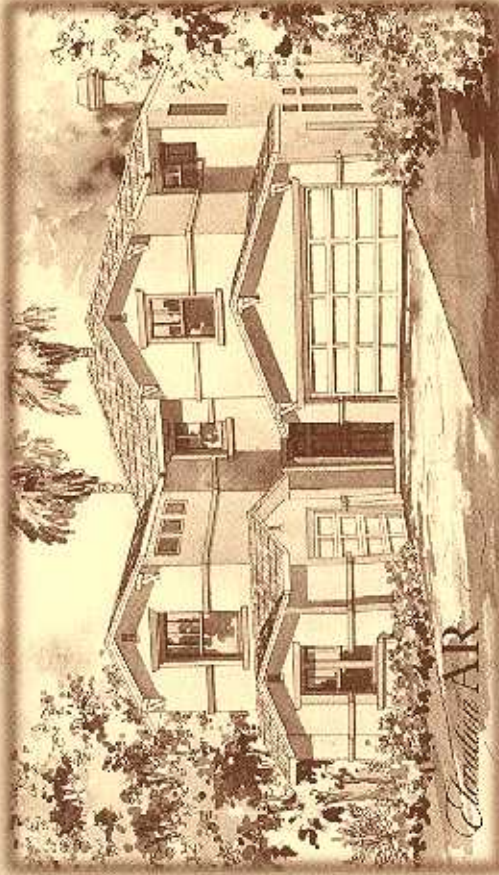
Windows, doors, and balconies may vary per plan and elevation.



Second Floor



First Floor



Corsica Residence

Approximately 3,864 square feet

Five bedrooms

Four and one-half baths

Loft

Three-car garage

Optional office

Optional bedroom six

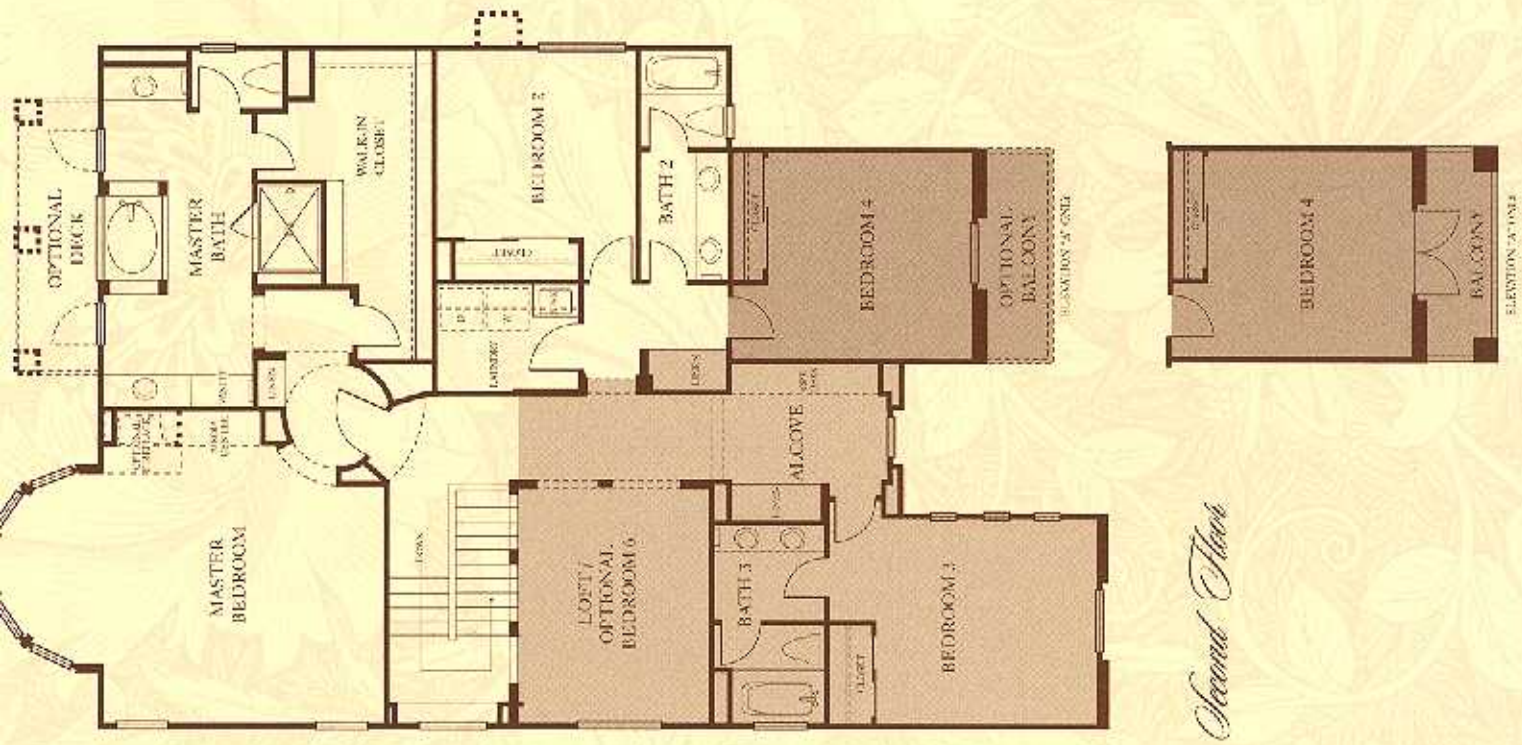
Optional deck at master bath

*Optional balcony at bedroom four
(Elevation "A" only)*

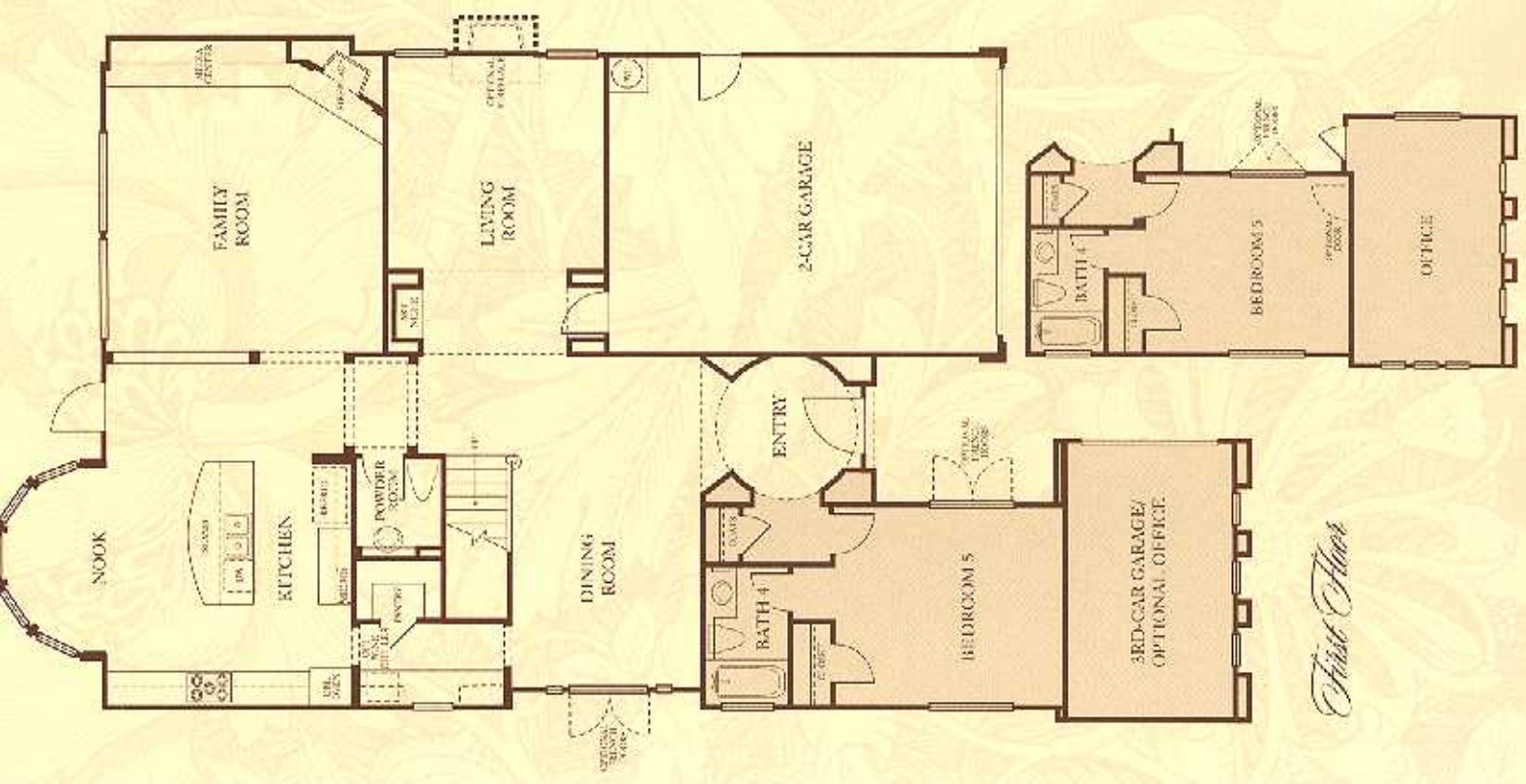
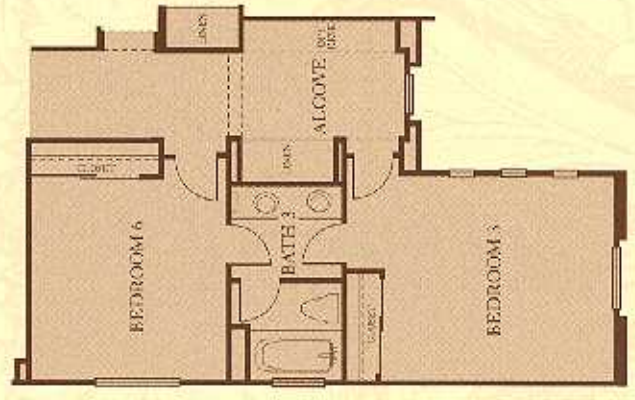


Artist's Illustration

Windows, doors, and balconies may vary per plan and elevation.



Second Floor



First Floor



Belfiore Residence

Approximately 3,331 square feet

Four bedrooms

Two and one-half baths

Master retreat

Bonus room

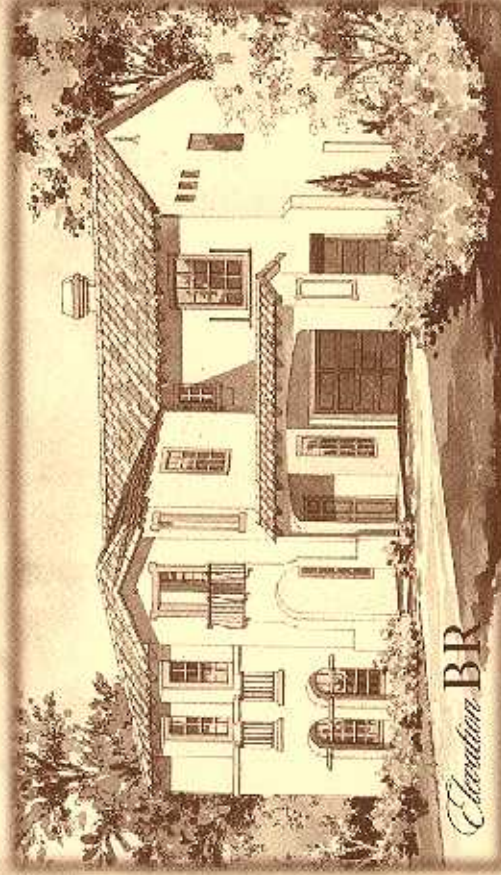
Three-car garage

Optional super family room

Optional bedroom fice with bath three

*Optional deck at bonus room
(Elevation "F" only)*

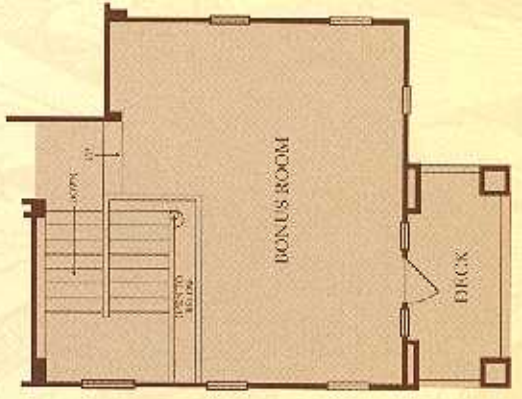
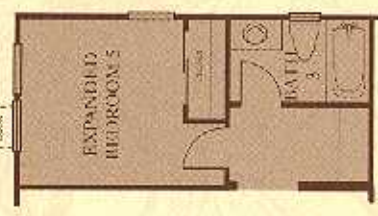
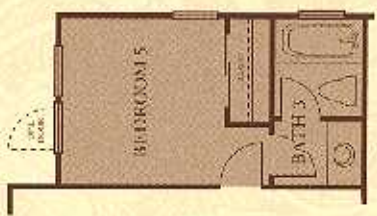
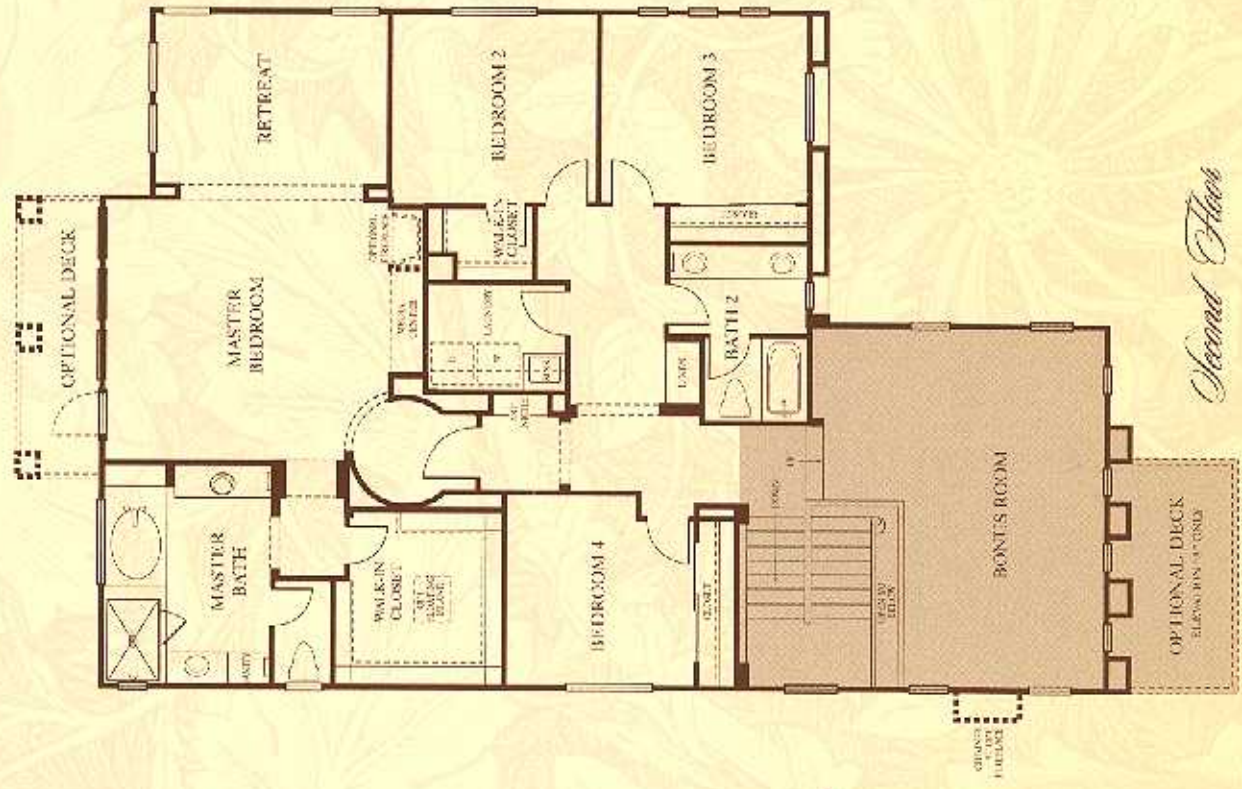
Optional deck at master bedroom



Artist's Illustration

Windows, doors, and balconies may vary per plan and elevation.

Second Floor



First Floor

