

QAKSTONE

AI D E I D I O S

*There are incredible times.
Ordinary you remarkable love.
One just for you.*



OAKSTONE

AT DEL DIOS

Price Sheet Effective June 11, 1996

PRELUDE

Plan One ~ 2443 sq. ft.
3 bedroom and loft
2 ½ bath, 3 car garage

Lot 1 ~ \$339,900

Lot 6 ~ \$309,900

MERIDIAN

Plan Two ~ 2817 sq. ft.
4 bedroom
3 bath, 3 car garage

Lot 2 ~ 329,900

Lot 3 ~ \$329,900

Lot 31 ~ \$363,900

FINALE

Plan Three ~ 2975 sq. ft.
5 bedroom or 4 bedroom and bonus room
3 bath, 3 car garage

Lot 4 ~ \$349,900

Lot 5 ~ \$349,900

Lot 30 ~ \$389,900

NO MELLO ROOS or CFD's

Sales Representative: Lisa Caputo
Open Daily 10:00 a.m. to 5:00 p.m.
Prices are subject to change.

Elegant Architectural Exteriors

- Three floor plans featuring two beautiful exterior elevations utilizing ledge stone accents
- Fire resistant concrete tile roofs
- Clerestory and oversized windows coordinated with each architectural elevation
- Energy efficient dual paned windows, french doors and sliding glass doors
- Direct rear yard access from garage
- Three car garages with exterior lights
- Insulated painted metal roll up sectional garage doors
- Automatic garage door openers on double door opening
- Large lots averaging over 18,000 square feet

Distinctive Features

our home includes pre-

selected custom exterior appointments such as cultured ledgestone, designer stucco and trim colorations, and matching concrete tile roofs.

Kitchens Designed for Convenience

- Custom crafted natural stain oak cabinets with raised panel doors and full height pantry and adjustable interior cabinet shelves with melamine finish
- Ceramic tile countertops with full splashes
- General Electric appliances including double-oven, microwave oven and 5 burner gas cooktop
- Energy saving multi-cycle dishwasher
- 3/4 horsepower garbage disposal
- Dual compartment, porcelain cast iron sink with single lever faucet

Warm and Spacious Living Areas

- Recessed plumbing stub for icemaker water line
- Fluorescent under cabinet counter light
- Recessed (fluorescent or incandescent) ceiling lighting
- Minimum nine foot ceilings throughout first level with many areas also vaulted
- Wood burning fireplaces with gas log lighter and energy saving glass panel doors in each family room and living room
- Plant shelves, track lights, and skylight accents per individual plan
- Energy efficient set-back thermostat
- Dimmer light switch in dining room
- Ceramic tile entry
- Luxurious carpeting in all living areas
- No wax vinyl flooring in kitchen and laundry
- Indoor laundry area with both 220V and gas stub
- 50 gallon water heater with instant hot water circulating pump in all plans
- Raised panel interior doors
- Phone and television outlets in all bedrooms, dens, kitchens, living rooms, family rooms, garages



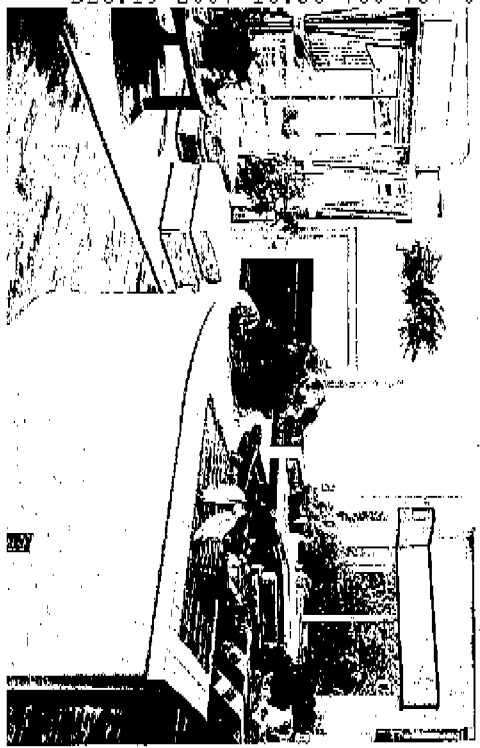


Our home offers an optional landscaping plan which has been designed to custom-fit the character of that property and is priced to encourage neighborhood enhancement.

- Solid chrome bath fixtures, door hardware and light fixtures
- Rounded interior drywall corners
- Prewired for security system
- Prewired for custom sound system
- Pre-plumbed for vacuum system
- Ceiling fan outlets in master bedroom, family room and bonus room
- Full tub enclosures in secondary baths

Roomy, Deluxe Master Suites

- His and hers matching self-rimming china basins in a hand set ceramic tile counter top
- Luxurious, deep five foot oval, 4-jet spa tub
- Separate enclosed shower



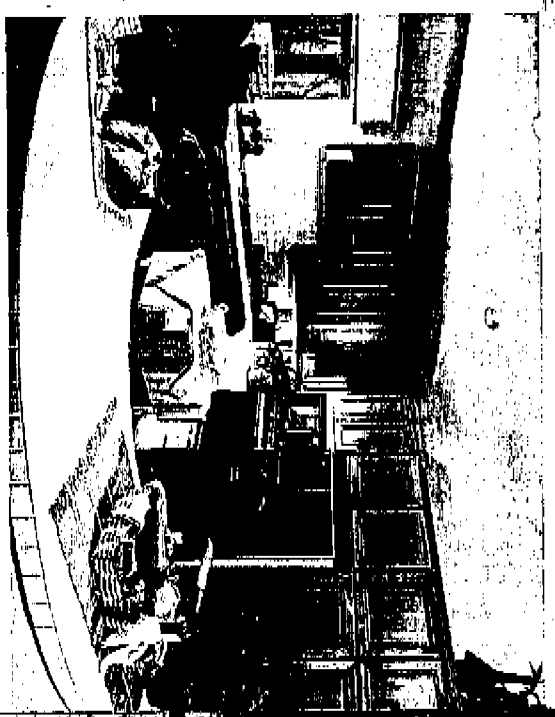
- Custom crafted natural cabinets with raised panel doors and melamine interior treatment
- Full width pullman mirrors
- Large walk-in master closet with double pole and shelf
- Mirrored sliding wardrobe doors

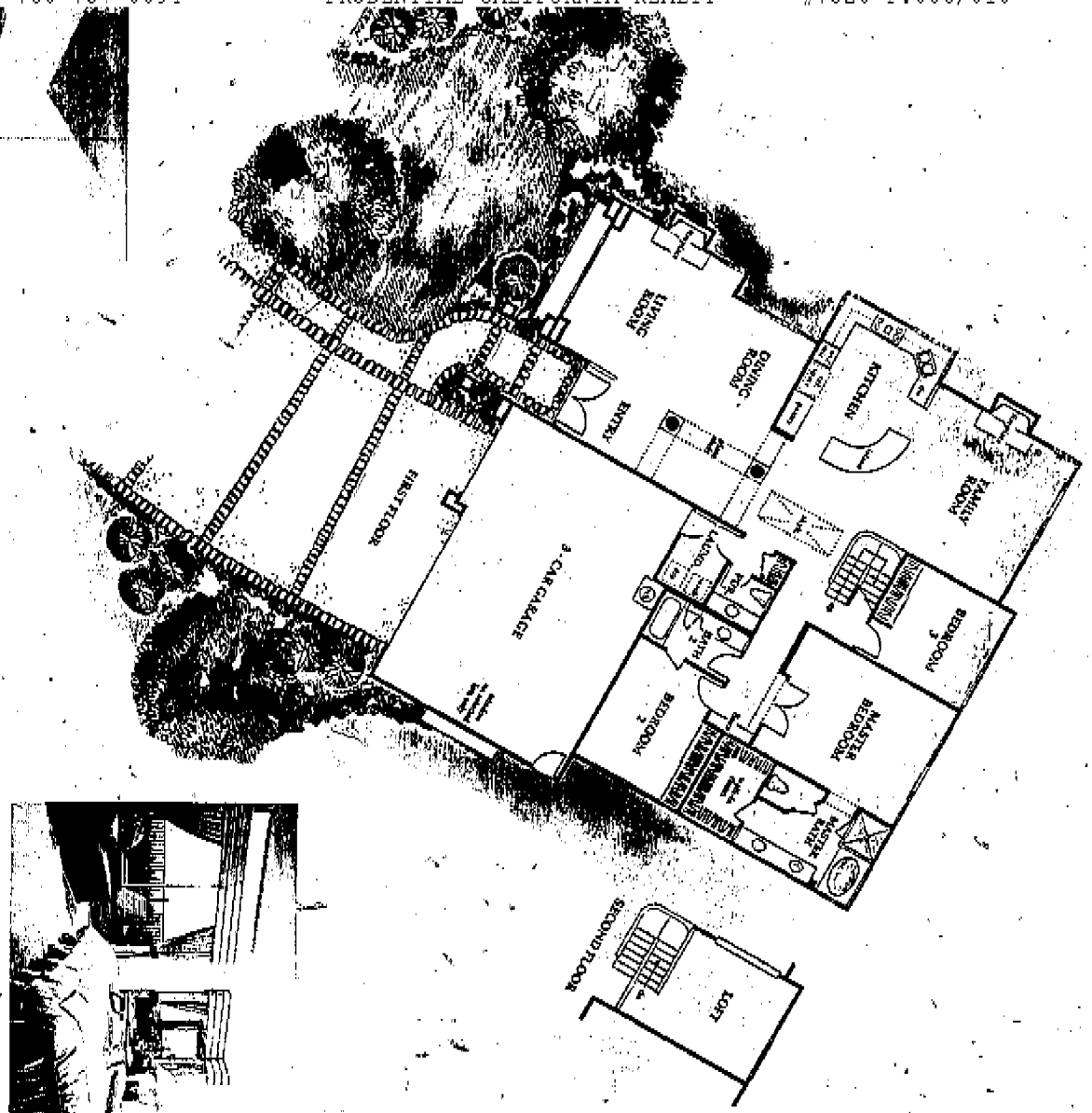
Options to Enhance the Employment of Your Home

- Alternate counter top treatments
- Upgraded flooring
- Automatic garage door opener (single garage door)
- Alternate white wash or medium oak stain cabinet finish
- Upgraded appliance package
- Cedar lined master closets
- Customized fireplace mantles
- Airtic access ladder
- Upgraded front door packages
- Rain gutters and down spouts
- Master bedroom retreats
- Ceiling fans
- Upgraded front yard flat work packages
- Upgraded front yard landscape packages
- Upgraded rear yard landscape packages
- Upgraded fence package



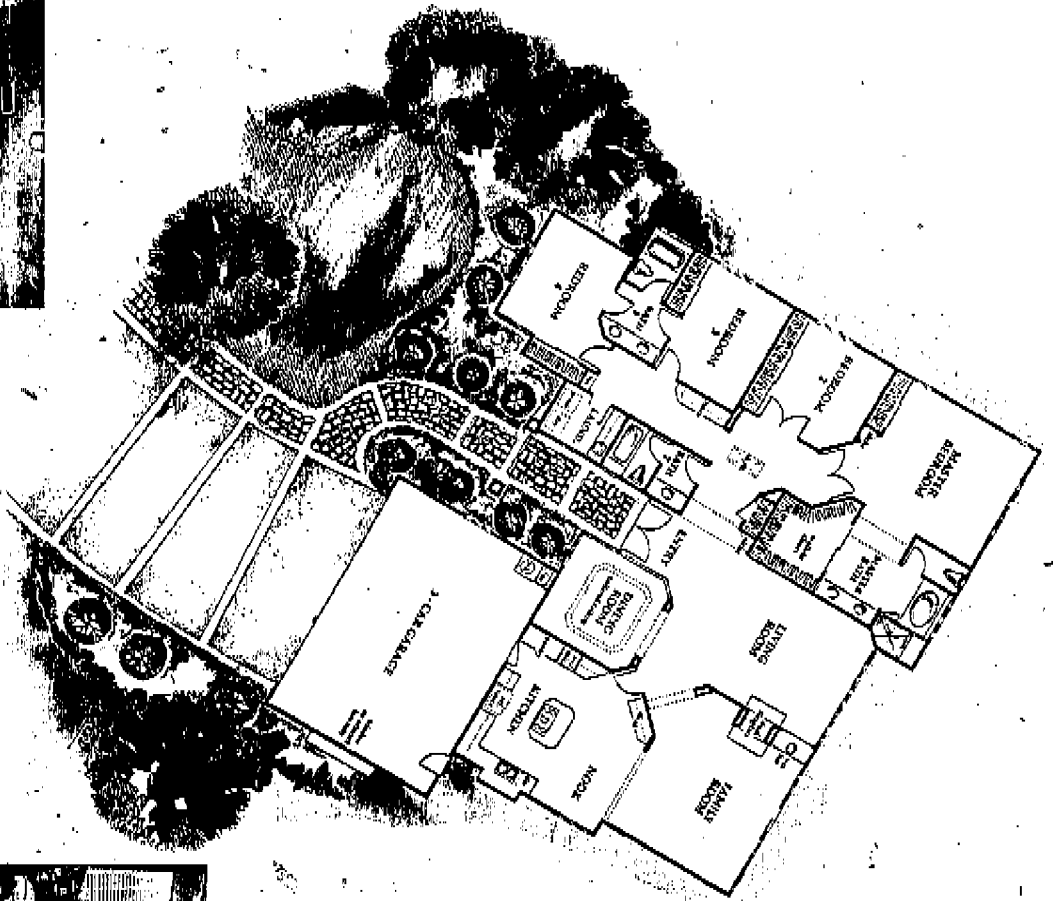
Drives and walkways with handsomely appointed stone accents in varying styles and heights are available and priced to encourage neighborhood enhancement.





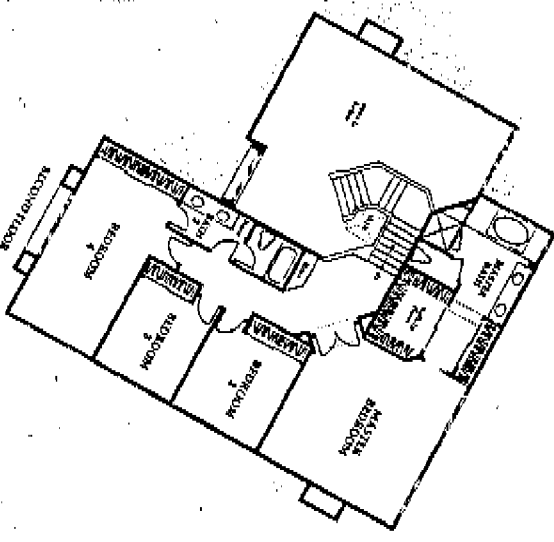
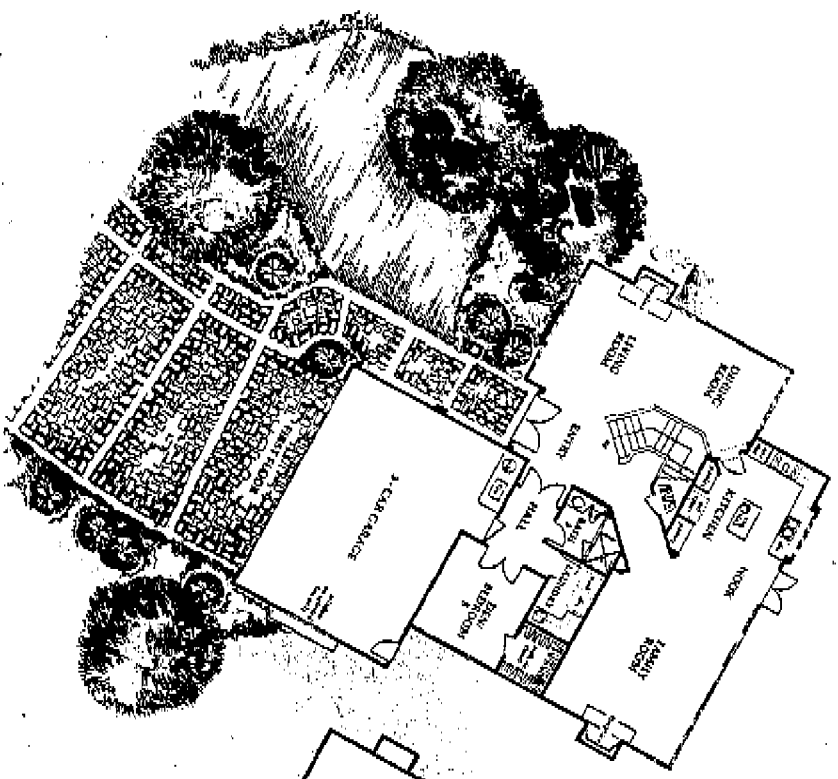
Bring on the fun! This masterful wide open space will bring out the entertainer in you. With 2,443 square feet of pure enjoyment, *Prelude* was designed for hospitality. The beautifully-appointed kitchen with its distinctively curved breakfast bar, is the meetingplace which opens to the family room, and opens up opportunity for great conversation. And the "writer's" loft is the perfect place to adjourn. Offering all the warmth and satisfaction of a really great cup of coffee, *Prelude* is the best place to start your day, your next book, your family, or the rest of your life. Offering three bedrooms, loft, two-and-one-half baths plus three car garage.





With its expansive one story, ranch-style design, Meridian nurtures a family way of life captured in 2,817 square feet of comfort and convenience. This exquisite kitchen with adjoining breakfast nook encourages mealtime laughter and the formal dining area with coffered ceiling offers the right touch of intimacy for special occasions. And who could resist the lure of a cozy two-sided fireplace enjoyed from either the family or living room? With plenty of space for privacy or play, these four bedrooms, three baths plus a three car garage create the ideal climate in which to share your days, your hopes, and your triumphs.





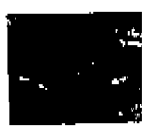
When "grand" is the statement, *Finale* is the

residence. Enter with a sweeping oak staircase bathed in skylight, add the right touch of elegance and you've created the masterpiece we call

Finale. With its dramatic appointments and distinctive

character at every turn, this two-story residence offers plenty of opportunity for "escape" including the luxury of a tub spa in the deluxe master bath.

Add all this to five bedrooms, three baths, and three car garage and you have the perfect setting for one really great adventure.



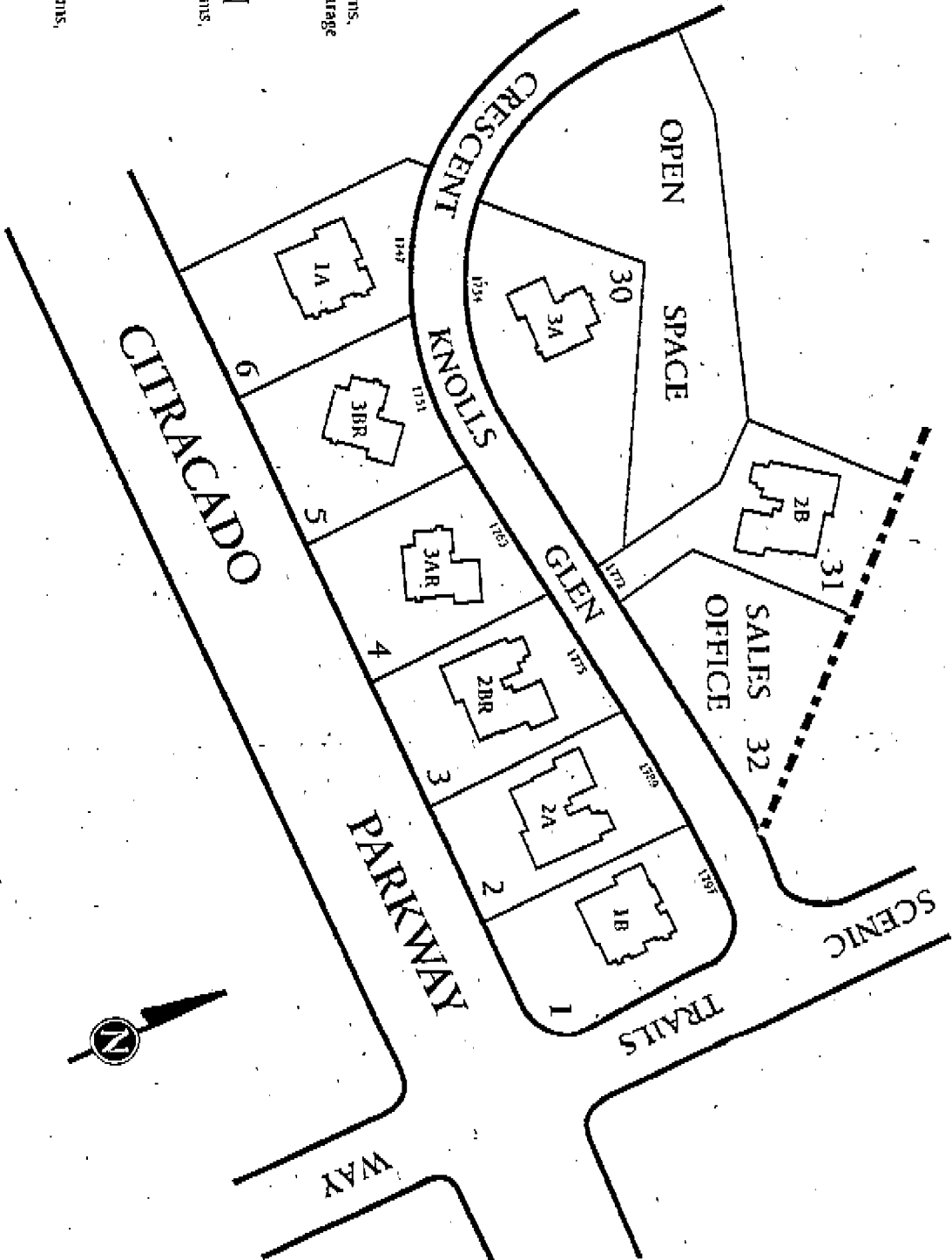
OAKSTONE

AT DEL DIOS

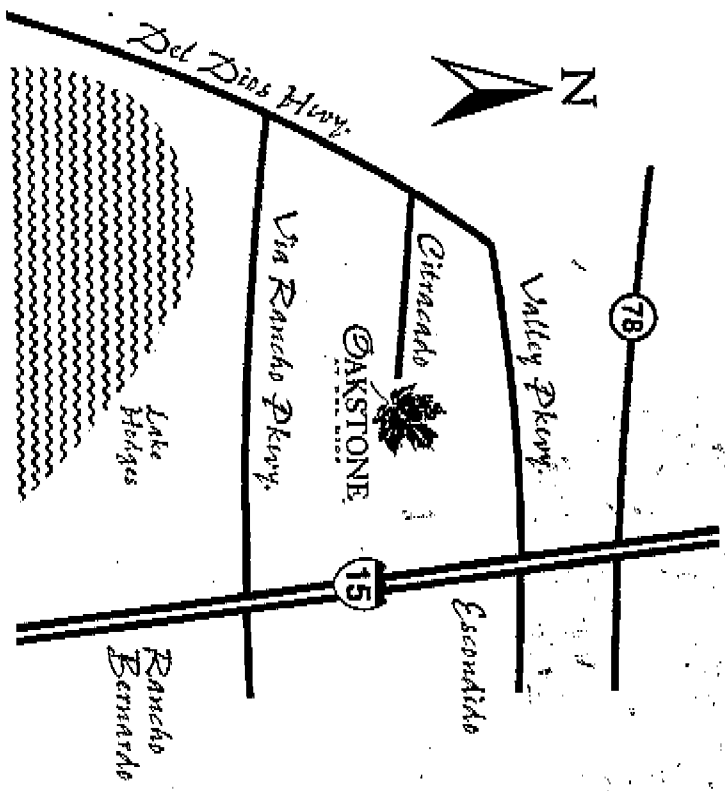
PHASE I

LEGEND

- PRELUDE**
2,443 Sq. Ft., 3 Bedrooms,
Loft, 2 1/2 Baths, 3-car Garage
- MERIDIAN**
2,817 Sq. Ft., 4 Bedrooms,
3 Baths, 3-car Garage
- FINALE**
2,975 Sq. Ft., 5 Bedrooms,
3 Baths, 3-car Garage



The builder reserves the right in its sole discretion to make changes or modifications to maps, plans, specific allocations, materials, features and colors without notice. Prices may be increased or decreased at any time. Preconstruction is subject to availability. Optional features may be included at additional cost, subject to construction cut-off date. All maps, plans, landscaping and elevation renderings are artist's conceptions and not to scale.



The builder reserves the right in its sole discretion to make changes or modifications to maps, plans, specifications, materials, features and colors without notice. Prices may be increased or decreased at any time. Product type is subject to availability. Optional features may be included at additional cost, subject to construction availability. All measurements are approximate and elevations renderings are artist's conceptions and not to scale.