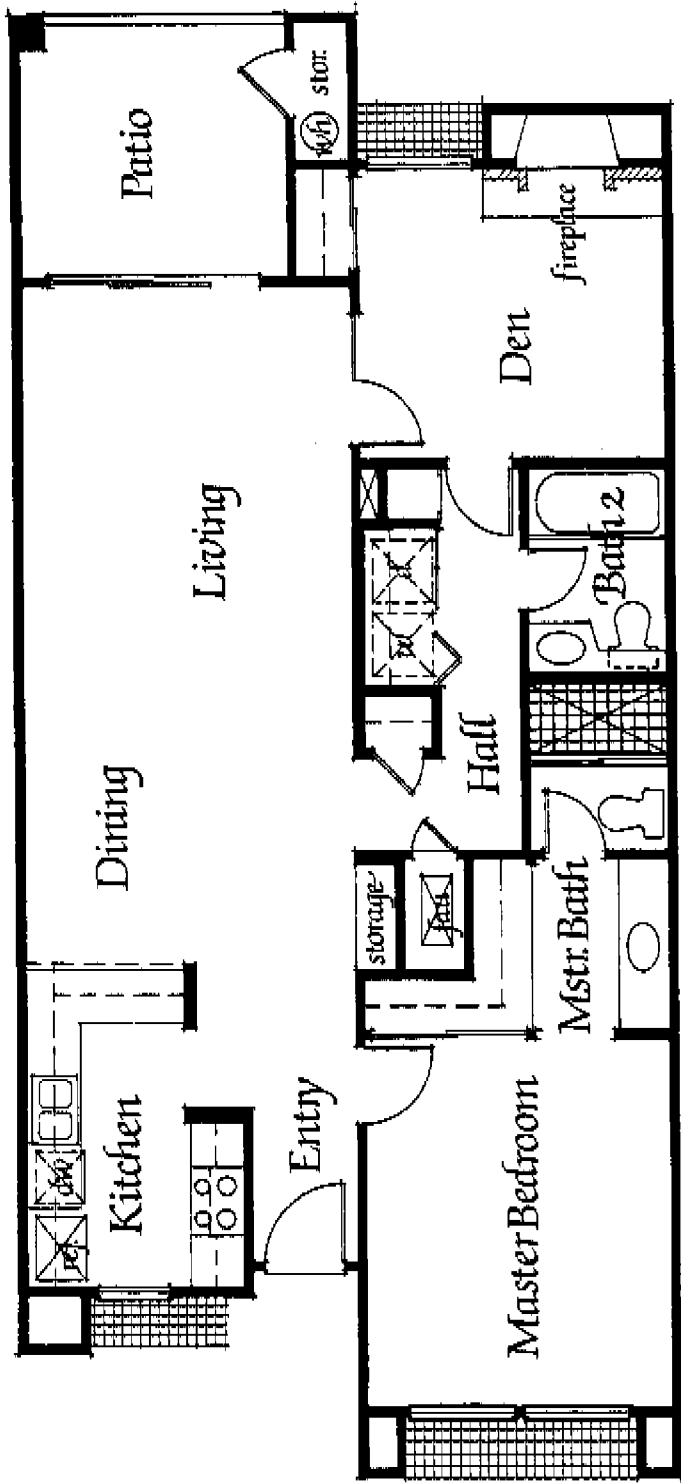
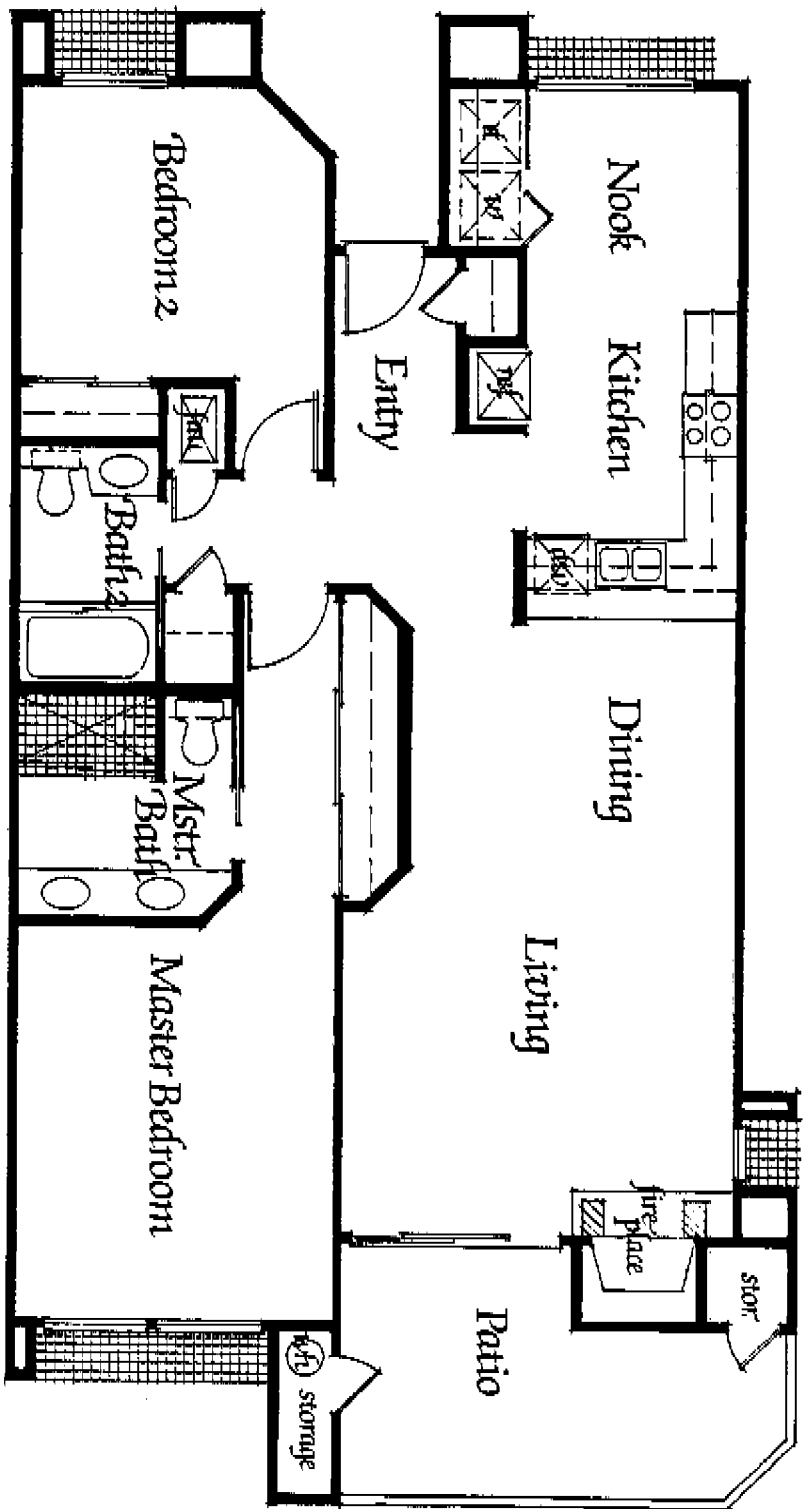


PALAZZO BERNARDO



Villa Amore

133 square feet
 A single level palazzo with one bedroom, a den or second bedroom, two baths and a formal dining room.



Villa Bergamo

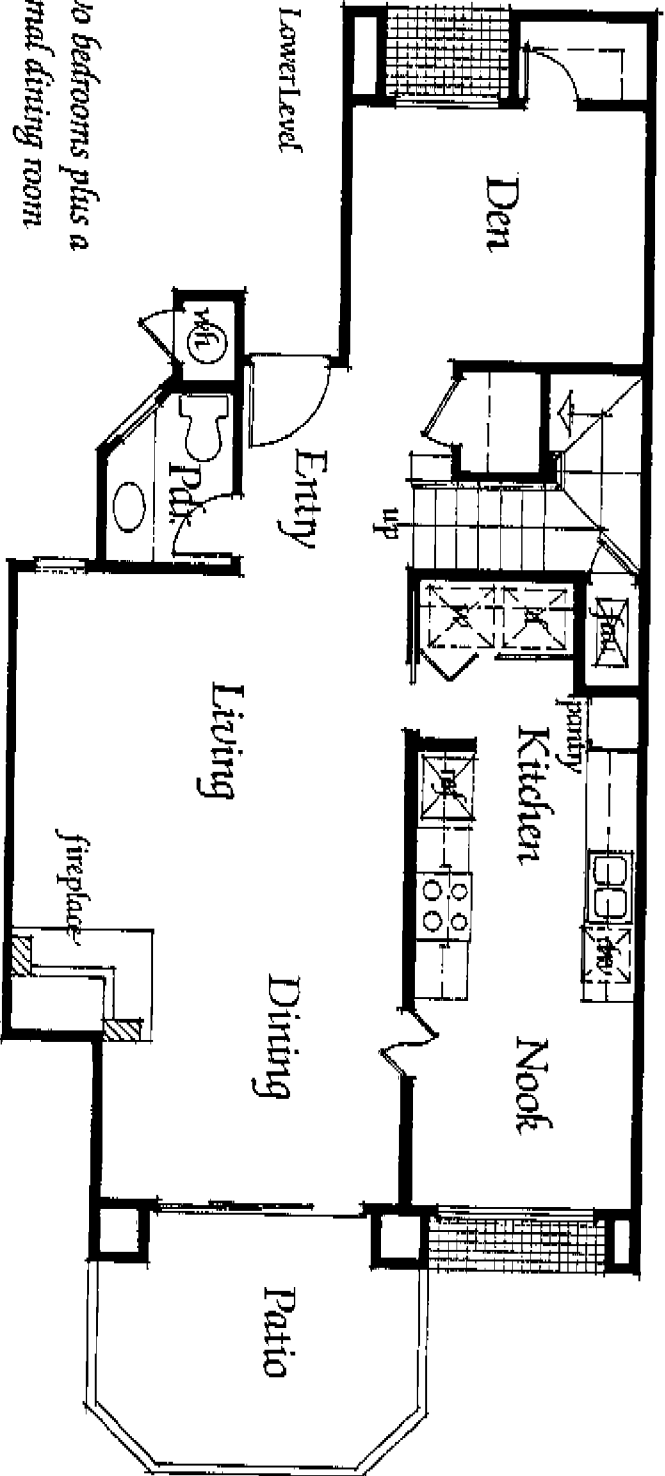
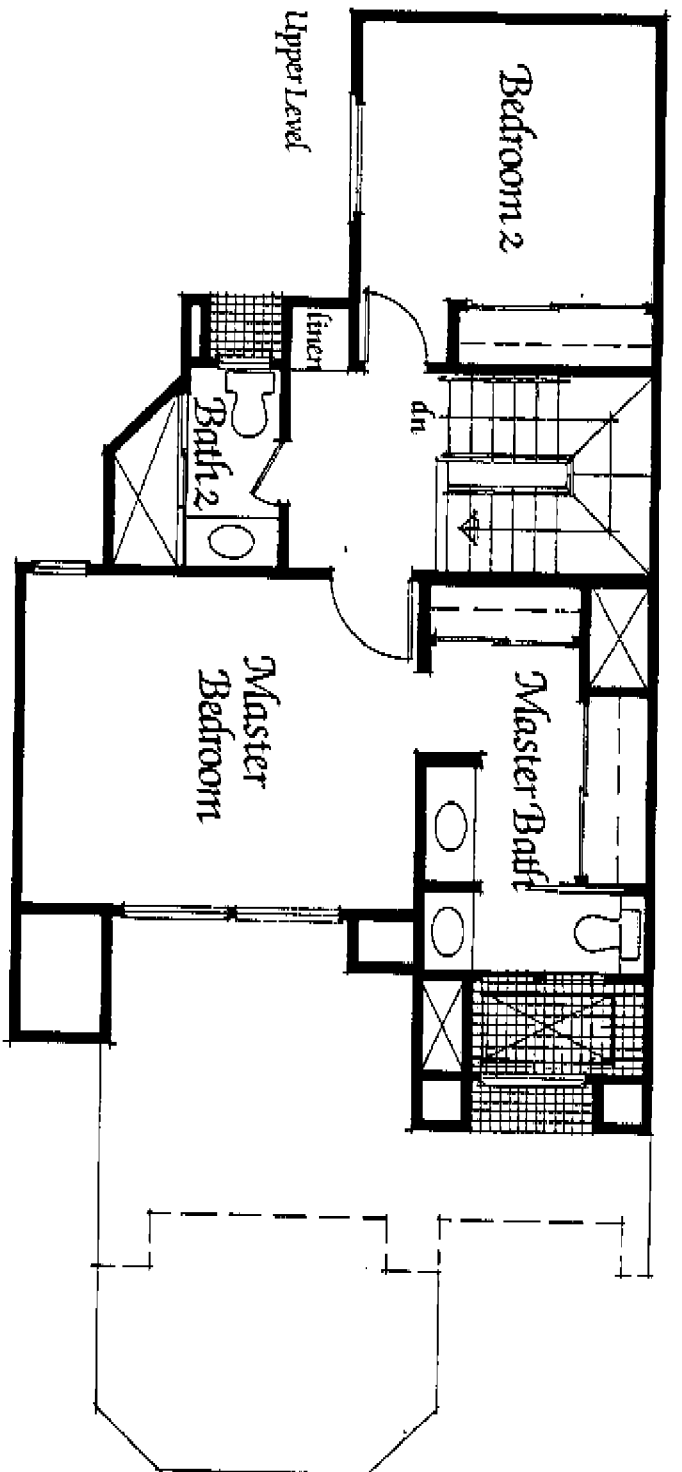
1276 square feet

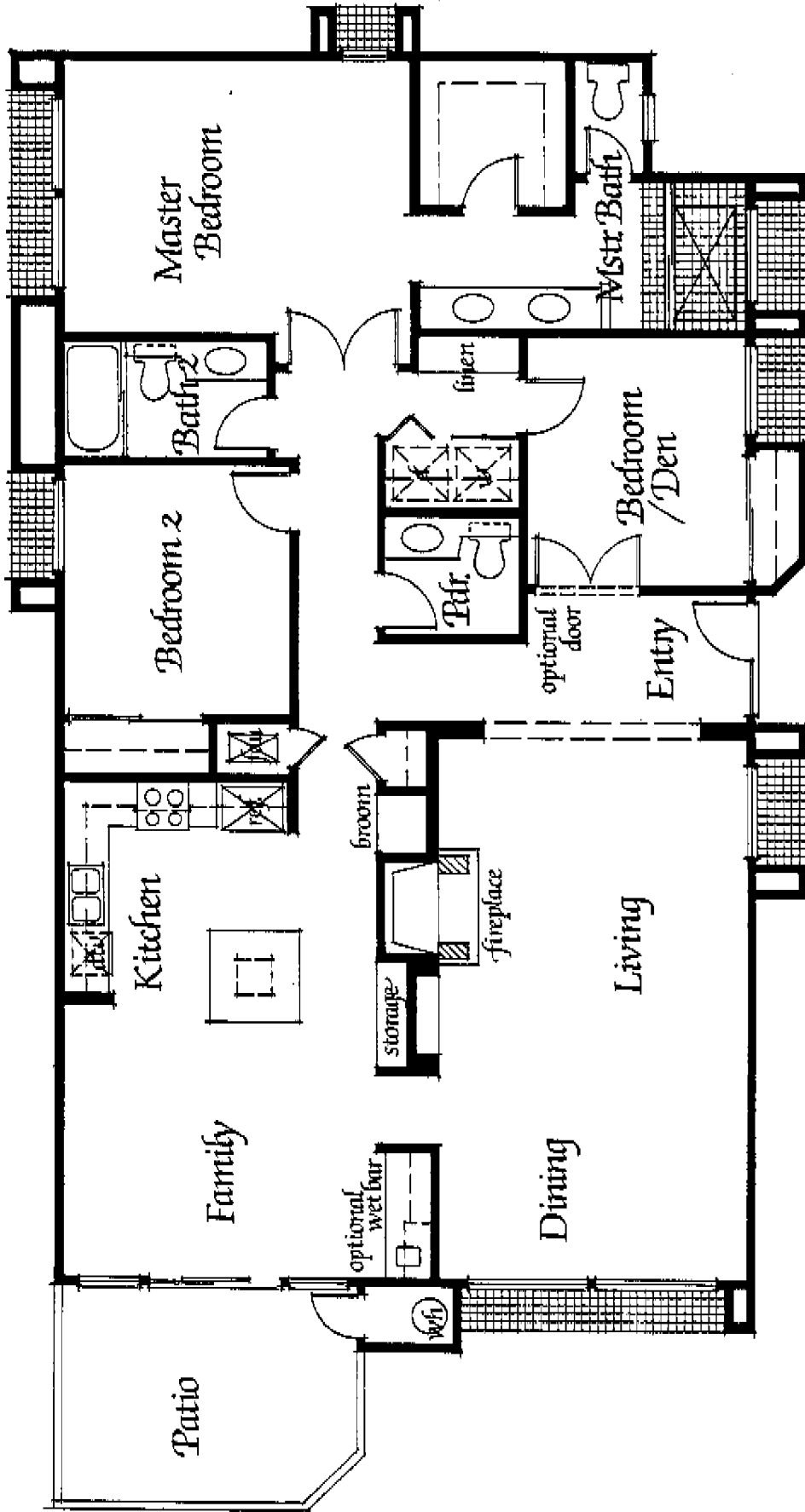
A single level palazzo with two bedrooms, two baths, a formal dining room and a sunny breakfast nook.

Villa Corsica

1508 to 1548 square feet

A palazzo on two levels with two bedrooms plus a den, two and one-half baths, formal dining room and a breakfast nook.





Villa Da Vinci

1667 square feet

A rambling single level palazzo with three bedrooms, two and one-half baths, formal dining room and family room.

The features of Palazzo Bernardo.

- Private gated community.
- Each home prepared for full security system.
- Jenn-Air deluge grill-range with eye-level microwave oven and Selective-Use convection/radiant heat oven.
- KitchenAid automatic dishwasher.
- Insinkerator stainless steel disposal.
- Ceramic tile kitchen counter tops. Oak butcher block counter top on center island in Plan D.
- Stained select oak kitchen cabinets.
- Refrigerator area plumbed for ice-maker.
- Oak trimmed luminous kitchen ceiling lighting (some plans).
- Dining room dinner switch.
- Decorator selected lighting fixtures.
- One hundred percent nylon plush carpeting.
- Ceramic tile entries.
- Armstrong easy-care vinyl floors in kitchen and baths.
- Woodburning fireplaces with gas log lighters.
- Thermostatically controlled gas forced air heating, prepared for air-conditioning.
- Bronze finish double-locking window frames.
- Solid entry doors with arched lights and dead bolt locks.

The Akins company reserves the right to change specifications, plans, prices or terms without notice.

Credits:

Architect:

Sutton, Collins, Moyer

Landscape Architect:

Storran, Escobar and Martinez

Interior Designer:

Saddleback Interiors

Sales Office Designer:

Inside Focus

- Six panel interior doors.
- Mirrored doors in master bedroom.
- Lowered bathroom and linen cabinets.
- White china bathroom fixtures.
- Roman tubs in master baths.
- Corian vanity tops with detailed edges.
- Distinctive Schlage antique brass door hardware.
- Double wall sound resistant construction.
- Sound resistant light weight concrete second story floors.
- Gull wall and ceiling insulation.
- Gas stub for bar-b-que.
- Vaulted ceilings with exposed beams (some plans).
- Smoke detector fire alarm.
- Interior laundry area in each unit.
- 220-volt electric and gas stub for clothes dryer.
- Red clay barrel tile roofs.
- Hand troweled smooth finished stucco.
- Walled private patios and decks.
- Garage with automatic door opener.
- Underground utilities.
- Prewired for cable TV.

Available options: Air-conditioning, Security System, Medical/Emergency Button, Mirrored Doors (select bedrooms), Wet Bar (Plan D).

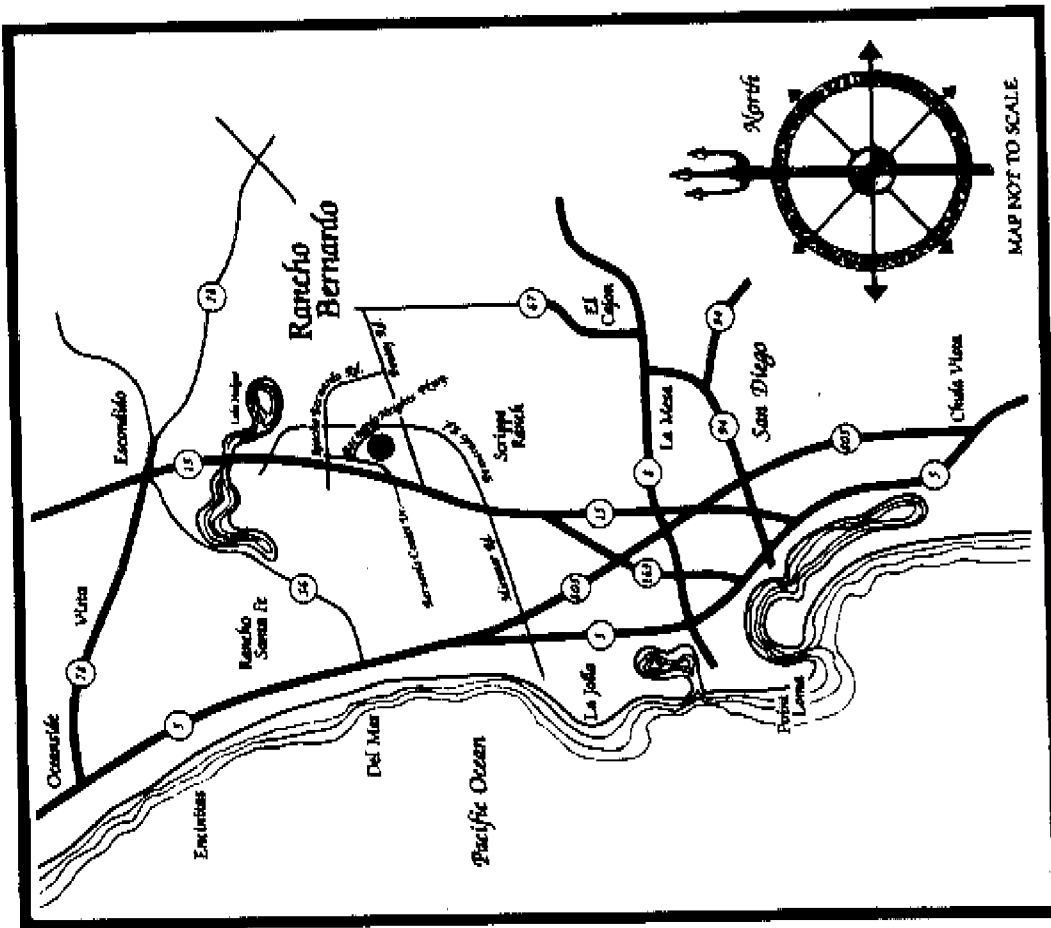
Homeowner's Association Membersh

- Pool and Spas
- Common Area Landscape Maintenance and Security
- Fire and Liability Insurance
- Painting and Repair of Building Exteriors
- Trash Disposal
- Electricity, Gas and Water to Common Areas
- Drive and Parking Area Maintenance and Repairs
- Pest Control of Common Landscape Area
- Pool Maintenance and Supplies
- Water Utilities



The Akins Company





Palazzo Bernardo
 16110 Avenida Venusto, San Diego, California 92128
 Telephone (714) 451-2280



A RESORT COLLECTION OF CONDOMINIUM HOMES AT BERNARDO HEIGHTS ● CALIFORNIA