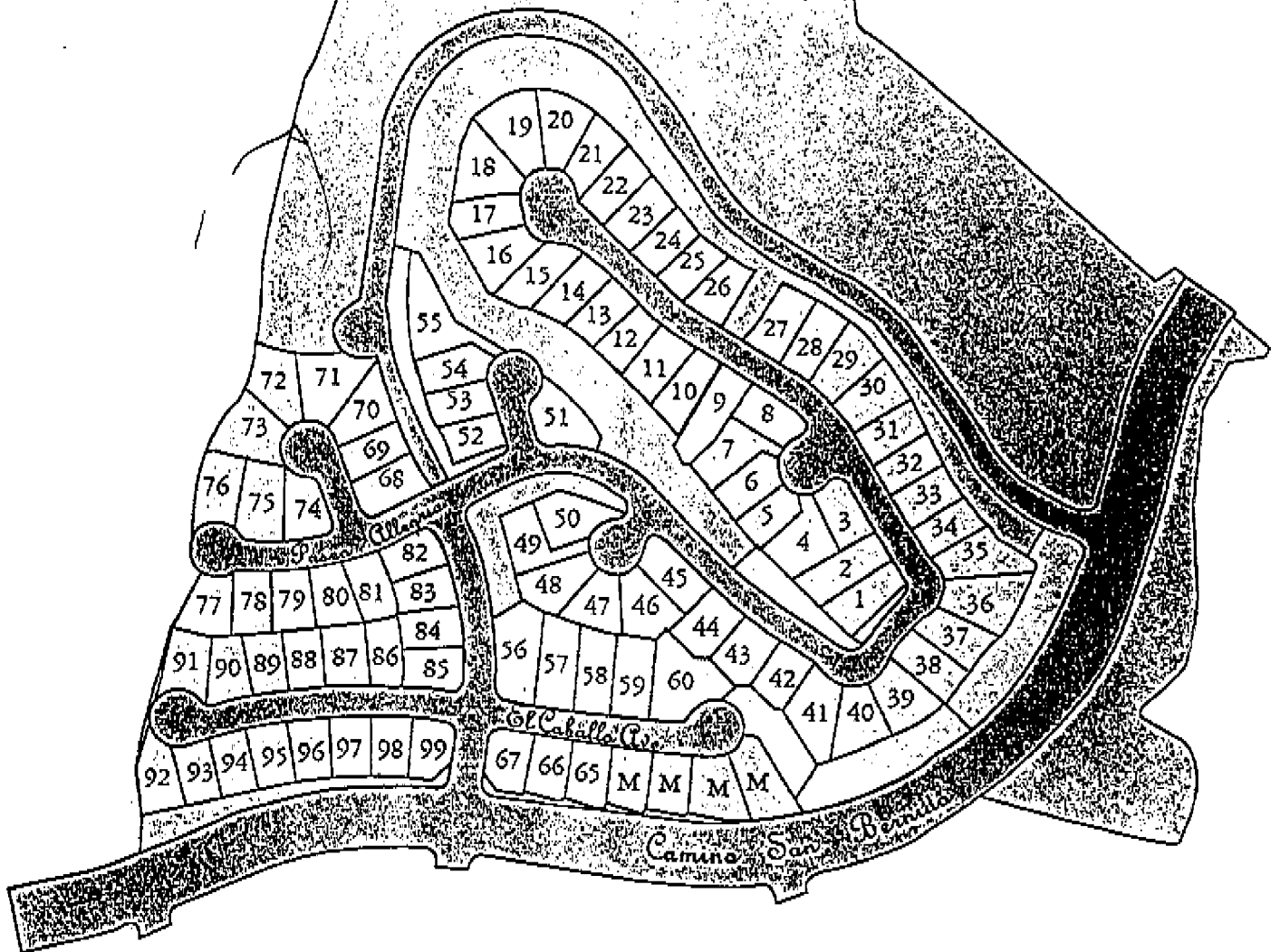




Patina

AT BERNARDO SPRINGS



CENTEX HOMES

619-385-9400



Features

Richly detailed Craftsman and Monterey Traditional architecture with color blended fire resistant tile roof to compliment the exterior palette.

Upgraded kitchen appliances in your choice of white or black including black cook top with stainless surround 6 sealed gas burners, 30" double electric self cleaning oven, multi-function microwave oven and built-in quiet wash 6 cycle dishwasher.

Complete drywall finish in garage.

Generous family gathering room with entertainment niche and wood burning fireplace.

Choice of two 8"x 8" ceramic tile colors in the kitchen with back splash behind cook top.

Choice of two colors of 4"x 4" ceramic tile in secondary bathrooms.

Choice of two colors of 6"x 6" ceramic tile in Master Bathroom.

Full color line choice of plush carpeting.

Mirrored wardrobe doors at closets in Master Bedroom Suite and secondary bedrooms.

Custom recessed lighting and upgraded stylish decorative light fixtures.

Digital energy efficient central air conditioning and natural gas forced air heating with digital setback thermostat.

Fully fenced side and rear yards for privacy.

Technology advanced Category 5 wiring for all telephone outlets.

Fire sprinklers.

Custom finish stool and apron on all windows at living, dining, family room and bedrooms.

200 AMP main service weatherproof electrical panel.

Rain gutters with downspout at front of home.

Impressive under cabinet fluorescent task lighting at kitchen.

Metal sectional roll-up garage doors with opener and two transmitters.

Cable TV outlets in all bedrooms and family room.

Pest control.

CENTEX HOMES

CENTEX HOMES



Patina

AT BERNARDO SPRINGS

RESIDENCE 1

Single Level
2,713 Square Feet
3 Bedrooms & Den
3 Baths
3 Car Garage

Priced from \$449,990

RESIDENCE 2

Two Story Home
3,390 - 3,541 Square Feet
4 Bedrooms & Den
3 Baths
2 Car Garage or 3 Car Tandem Garage

Priced from \$509,990

RESIDENCE 3

Two Story Home
3,383 - 3,580 Square Feet
4 Bedrooms & Loft
4 Baths
2 or 3 Car Garage

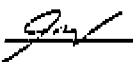
Priced from \$494,990

RESIDENCE 4

Two Story Home
3,631 - 3,828 Square Feet
5 Bedrooms & Master Bdrm Retreat
4 1/2 Baths
2 or 3 Car Garage

Priced from \$519,990

All Square Footages Are Approximate.
All Prices Subject to Change without prior notice or obligation.
\$5,000 Deposit Required.
Subject to Prior Sale

Approved: 
5/4/2000

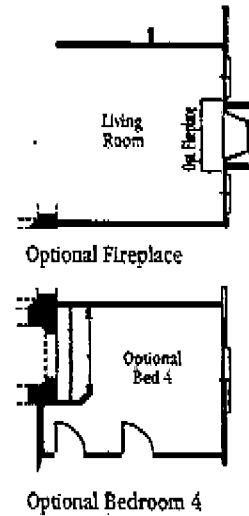
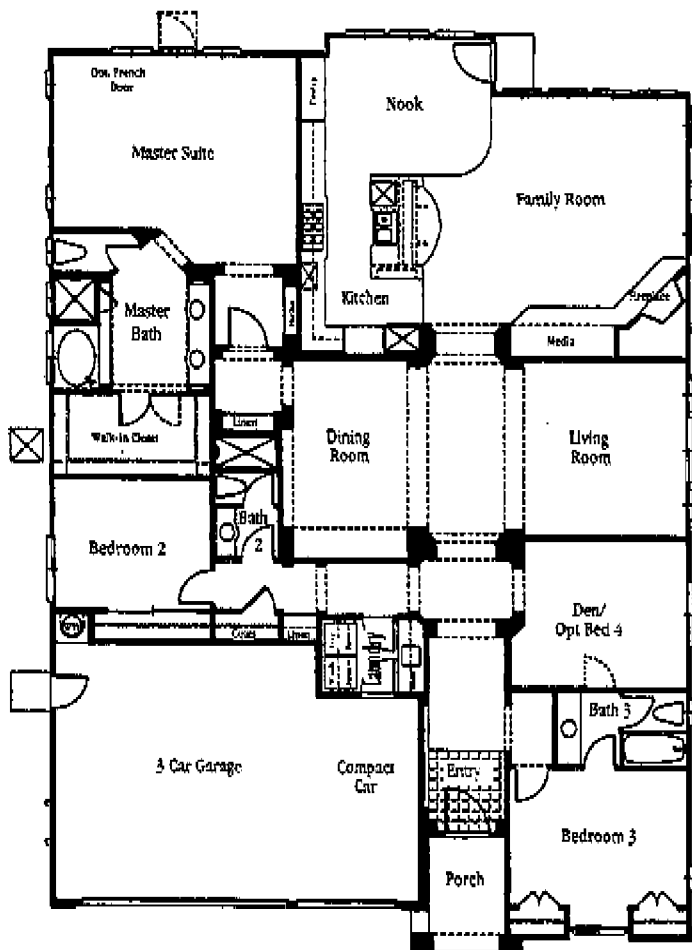
Scott Roulier, Sales Representative
Bob Litterilla, Sales Representative

Residence One

Approximately 2,713

Single-Level • Three Bedrooms Plus Den • Three Baths • Formal Living Room • Formal Dining Room • Family Room with Corner Fireplace and entertainment Niche • Gourmet Kitchen with Center Island and Adjacent Nook • Interior Laundry with Sink • Three-Car Garage

Optional Fireplace at Living Room



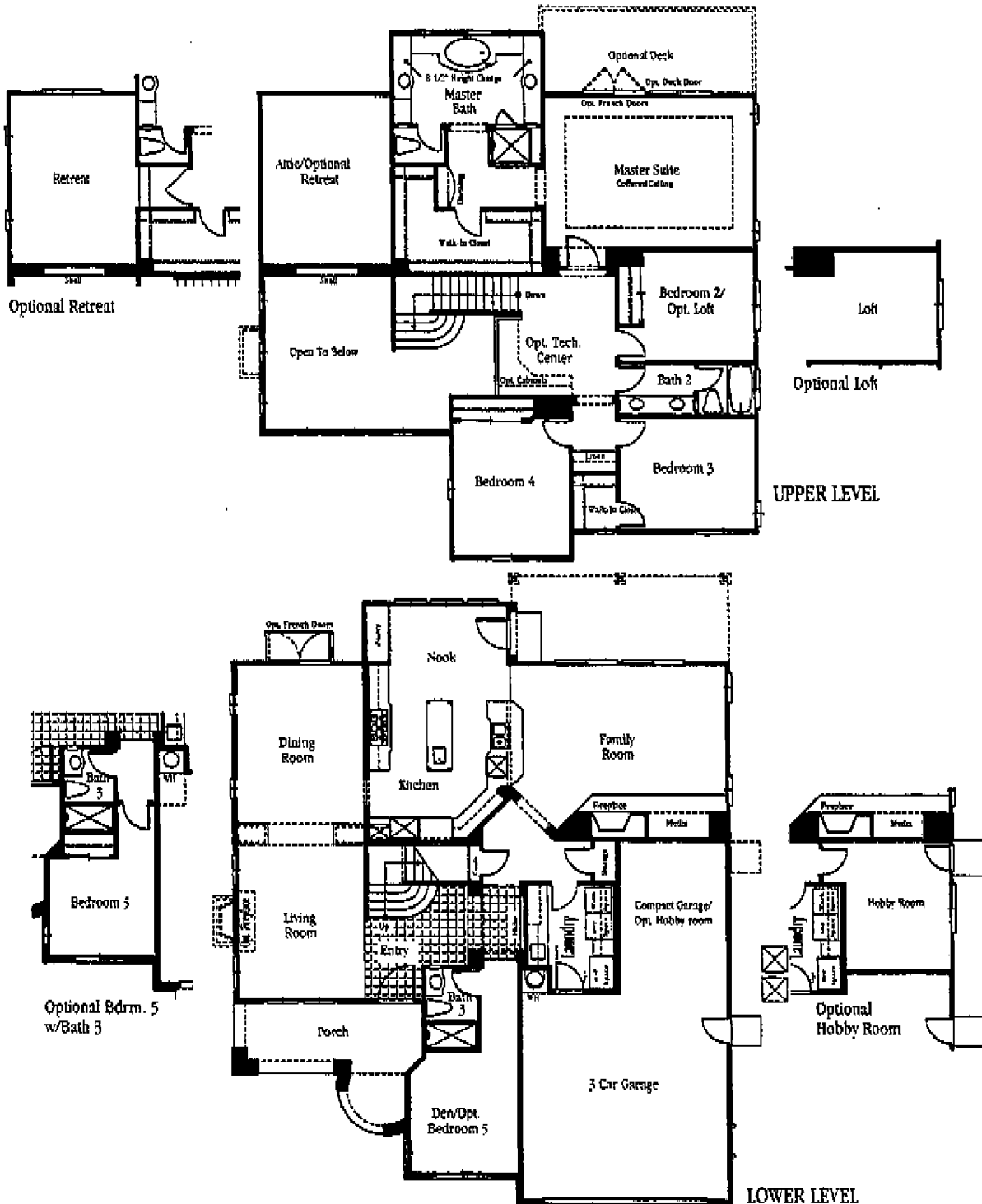
FINANCING PLANS, SPECIFICATIONS, FEATURES AND/OR FINISHES, PRODUCT AVAILABILITY AND OTHER TERMS ARE SUBJECT TO CHANGE WITHOUT NOTICE. HOMES SUBJECT TO PRIOR SALE. SQUARE FOOTAGE IS APPROXIMATE. SEE YOUR TAX ADVISOR FOR DETAILS REGARDING DEDUCTIONS. AS A RESIDENT OF PALM BEACH COUNTY, YOU AUTOMATICALLY BECOME A MEMBER OF THE PALM BEACH COUNTY HOMEOWNERS ASSOCIATION. MONTHLY ASSOCIATION DUES MAINTAIN THE QUALITY OF THE COMMON AREA FACILITIES. PALM BEACH COUNTY IS INCLUDED IN AN APPOINTMENT DISTRICT AND COMMUNITY FACILITIES DISTRICT WHICH FUND CERTAIN PUBLIC FACILITIES AND SERVICES. RESERVING IS A FIRST COME, FIRST SERVED PROCESS. MODELS DO NOT REPRESENT A SPECIFIC HOME. WE ARE PLEASED TO THE LETTER AND SPIRIT OF U.S. POLICY FOR THE ACQUISITION OF EQUAL HOUSING OPPORTUNITY THROUGHOUT THE NATION. WE ENCOURAGE AND SUPPORT AN AFFIRMATIVE ADVERTISING PLAN IN WHICH THERE ARE NO BARRIERS TO OBTAINING HOUSING BECAUSE OF RACE, COLOR, RELIGION, SEX, HANDICAP, ANNUAL INCOME OR NATIONAL ORIGIN. PLEASE CONSULT A SALES REPRESENTATIVE FOR DETAILS.

Residence Two

Approximately 3,161

Two-Story • Four Bedrooms Plus Den • Three Baths • Formal Living Room with Volume Ceiling • Formal Dining Room • Family Room with Fireplace and Entertainment Niche • Spacious Kitchen with Breakfast Bar and Adjacent Nook • Interior Laundry with Sink • Three-Car Tandem Garage

Optional Loft at Bedroom 2, Optional Bedroom 5 at Den, Optional Retreat at Attic, Optional Hobby Room at Tandem Garage, Optional Fireplace at Living Room



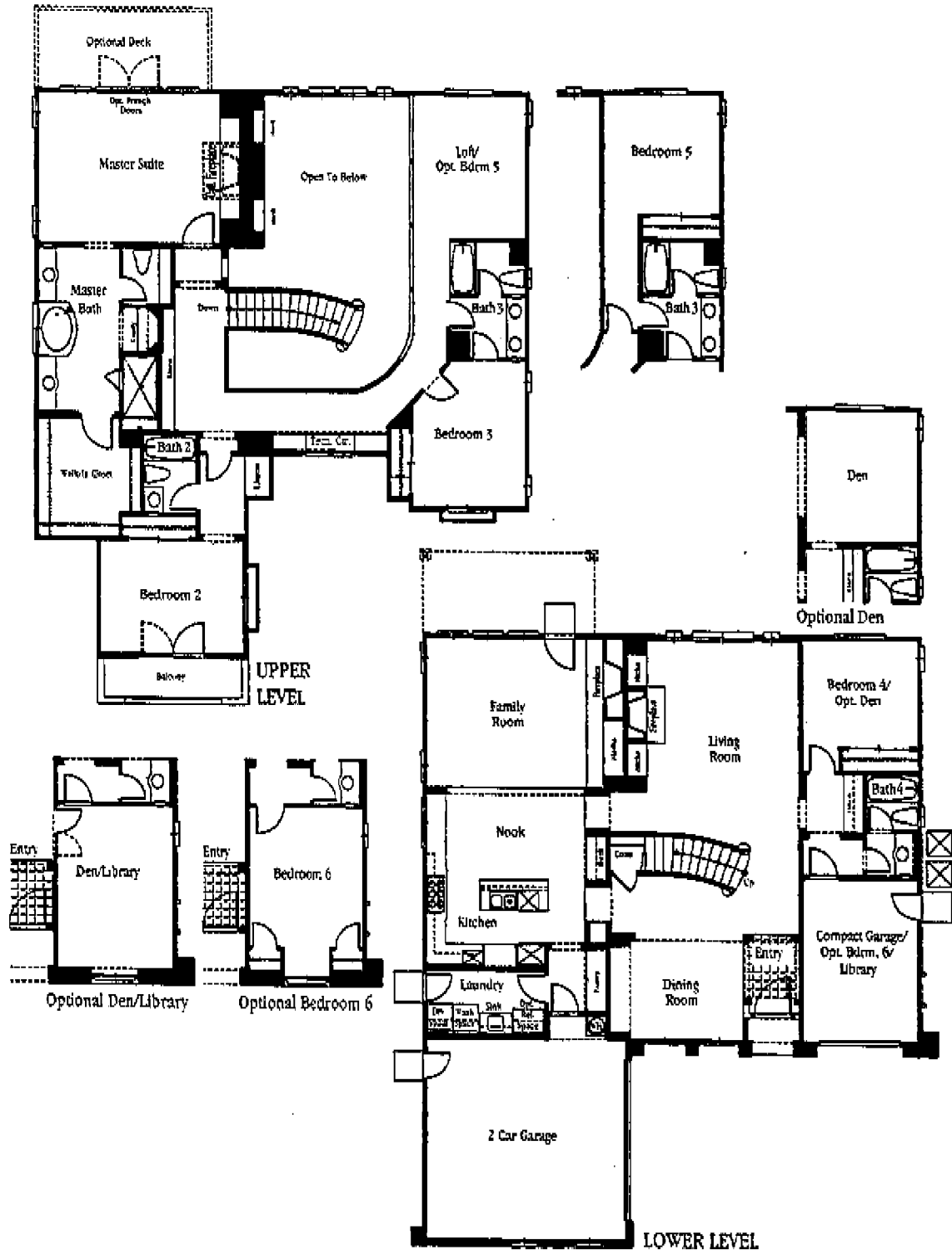
PRICE, FINANCING PLANS, SPECIFICATIONS, FEATURES, SQUARE FOOTAGE, PRODUCT AVAILABILITY AND OTHER TERMS ARE SUBJECT TO CHANGE WITHOUT NOTICE. HOMES SUBJECT TO PRIOR SALE. SQUARE FOOTAGE IS APPROXIMATE. SEE YOUR SALES AGENT FOR DETAILS REGARDING DISCOUNTS. AS A RESIDENT OF PALM BEACH COUNTY YOU AUTOMATICALLY BECOME A MEMBER OF THE HOA. HOA DUES ARE \$1,000 PER YEAR. HOA MAINTAINS THE QUALITY OF THE COMMON AREAS. PALM BEACH COUNTY IS INCLUDED IN AN AMENITY DISTRICT AND COMMUNITY FACILITIES (GOLF COURSE) DISTRICT WHICH FUND CERTAIN PUBLIC FACILITIES AND SERVICES. REMEMBER TO ASK YOUR SALES REPRESENTATIVE FOR DETAILS. WE ARE PLEDGED TO THE LETTER AND SPIRIT OF U.S. POLICY FOR THE ACHIEVEMENT OF EQUAL HOUSING OPPORTUNITY THROUGHOUT THE NATION. WE ENCOURAGE AND SUPPORT AN AFFIRMATIVE ADVERTISING PLAN IN WHICH THERE ARE NO BARRIERS TO OBTAINING HOUSING BECAUSE OF RACE, COLOR, RELIGION, SEX, HANDICAP, FAMILIAL STATUS OR NATIONAL ORIGIN. PLEASE CONSULT A SALES REPRESENTATIVE FOR DETAILS.

Residence Three

Approximately 3,383

Two-Story • Four Bedrooms • Four Baths • Formal Dining room • Formal Living Room with Volume Ceiling and Fireplace • Family Room with Fireplace and Media Niche • Generous Kitchen with Center Island and Nook • Interior Laundry with Sink • Three-Car Split Garage

Optional Den at Bedroom 4, Optional Bedroom 5 at Loft, Optional Den/Library at Garage 1, Optional Bedroom 6 at Garage 1



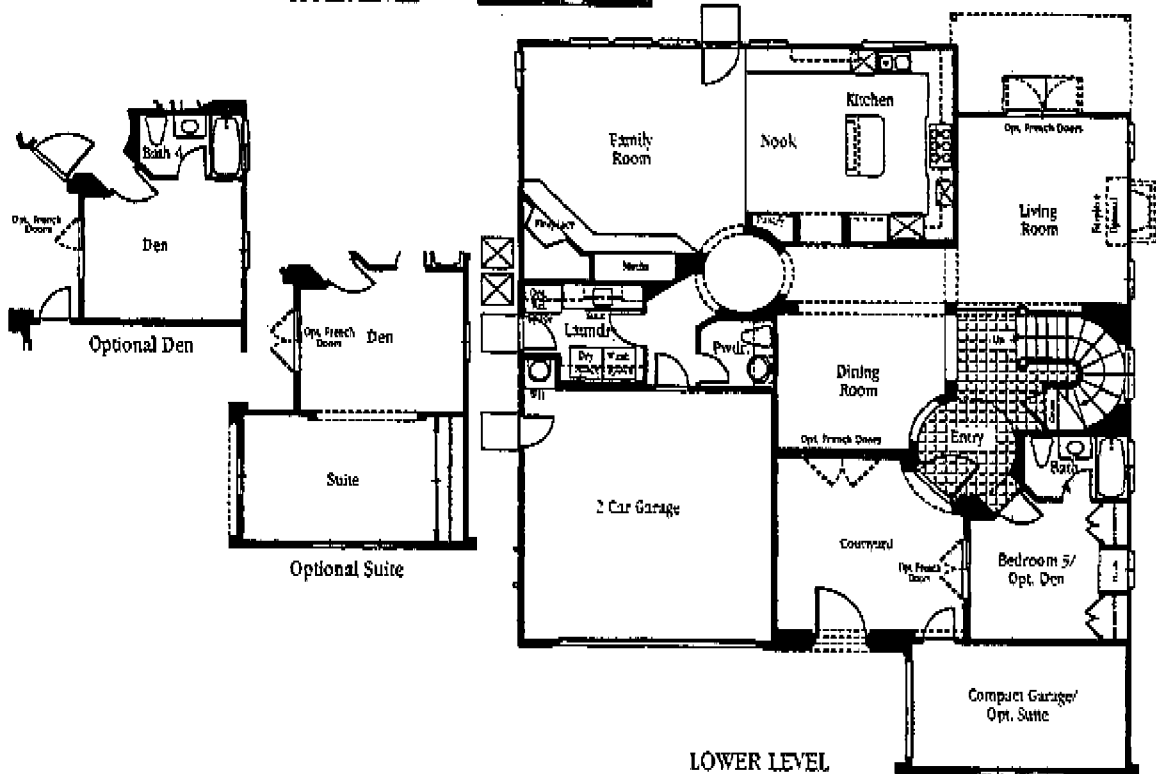
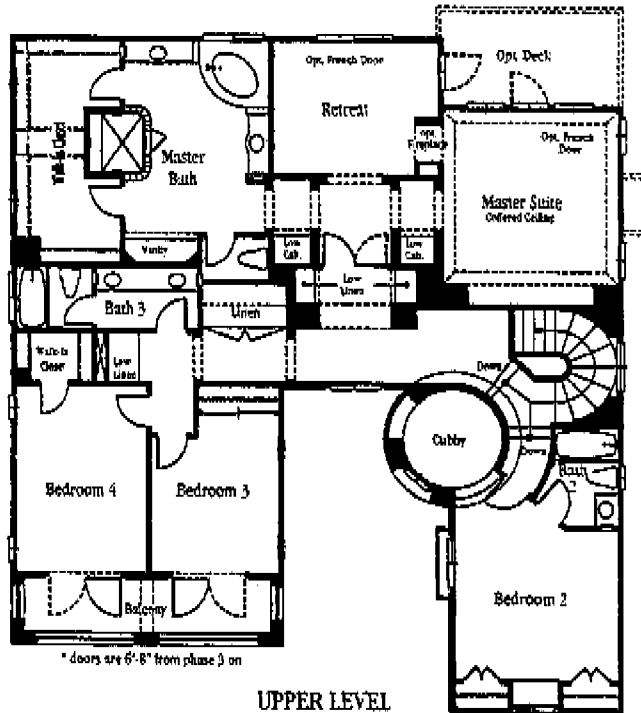
PRICES, FINANCING, PLANS, SPECIFICATIONS, FEATURES AND ALL POSTAGE, PRODUCT AVAILABILITY, AND OTHER TERMS ARE SUBJECT TO CHANGE WITHOUT NOTICE. HOMES SUBJECT TO PRIOR SALE. SQUARE FOOTAGE IS APPROXIMATE. SEE YOUR TAX ADVISOR FOR DETAILS REGARDING DEDUCTIONS. ALL A RESIDENT OF FLORIDA AT BERNARDO SPRINGS, FL. TO LEGALLY BECOME A MEMBER OF THE INDIVIDUAL HOMEOWNERS ASSOCIATION. ALTHOUGH REPRESENTATION DOES NOT IMPAIR THE QUALITY OF THE CONSTRUCTION FACILITIES, PATINA IS INCLUDED IN AN ADJACENT DISTRICT AND COMMUNITY FACILITIES WITHIN RAQUEL DISTRICT WHICH PROVIDE CERTAIN PUBLIC FACILITIES AND SERVICES. REGARDING HAVENLY CONCEPTION, MODELS DO NOT REFLECT A REAL PREFERENCE. WE ARE SUBJECT TO THE LETTER AND SPIRIT OF U.S. POLICY FOR THE AVOIDANCE OF EQUITY HOUSING DISCRIMINATION THROUGHOUT THE MARKET. WE ENCOURAGE AND SUPPORT AN AFFIRMATIVE ADVERTISING PLAN IN WHICH THERE ARE NO BARRIERS TO OBTAINING HOUSING BECAUSE OF RACE, COLOR, RELIGION, SEX, HANDICAP, FAMILY STATUS OR NATIONAL ORIGIN. PLEASE CONSULT A REAL REPRESENTATIVE FOR DETAILS.

Residence Four

Approximately 3,631

Two-Story • Five Bedrooms • Four-and-One-Half Baths • Master Bedroom Retreat • Formal Dining Room • Formal Living Room • Family Room with Corner Fireplace and Media Niche • Kitchen with Center Island and Adjacent Nook • Interior Laundry with Sink • Three-Car Split Garage

Optional Den at Bedroom 5, Optional Suite at Den/Garage 1, Optional Fireplace at Living Room



PRICE, FINANCING, PLANS, SPECIFICATIONS, SQUARE FOOTAGE, PRODUCT AVAILABILITY, AND OTHER TERMS ARE SUBJECT TO CHANGE WITHOUT NOTICE. HOMES SUBJECT TO PRIOR SALE. SQUARE FOOTAGE IS APPROXIMATE. SEE YOUR TAX ADVISOR FOR DETAILS REGARDING DEDUCTIONS. AS A MEMBER OF PATINA AT BERNARDO SPINGS, YOU AUTOMATICALLY BECOME A MEMBER OF THE INDIVIDUAL HOMEOWNERS ASSOCIATION. MONTHLY ASSOCIATION DUES MAINTAIN THE QUALITY OF THE COMMON AREA FACILITIES. PATINA IS INCLUDED IN AN AMBASSADOR DISTRICT AND COMMUNITY FACILITIES (MELBOURNE DISTRICT WHICH FUND CERTAIN PUBLIC FACILITIES AND SERVICES). REMEMBER IS AN ARTS CONCEPTION. APPROVA DO NOT REFLECT RACIAL PREFERENCE. WE ARE PLEDGED TO THE LETTER AND SPIRIT OF U.S. POLICY FOR THE ADVICE OF EQUAL HOUSING OPPORTUNITIES THROUGHOUT THE NATION. ALL EMPLOYERS AND SUPPORT AN AFFIRMATIVE ADVERTISING PLAN IN WHICH THERE ARE NO BARRIERS TO OBTAINING HOUSING BECAUSE OF RACE, COLOR, RELIGION, SEX, HANDICAP, MARITAL STATUS, OR NATIONAL ORIGIN. PLEASE CONSULT A SALES REPRESENTATIVE FOR DETAILS.