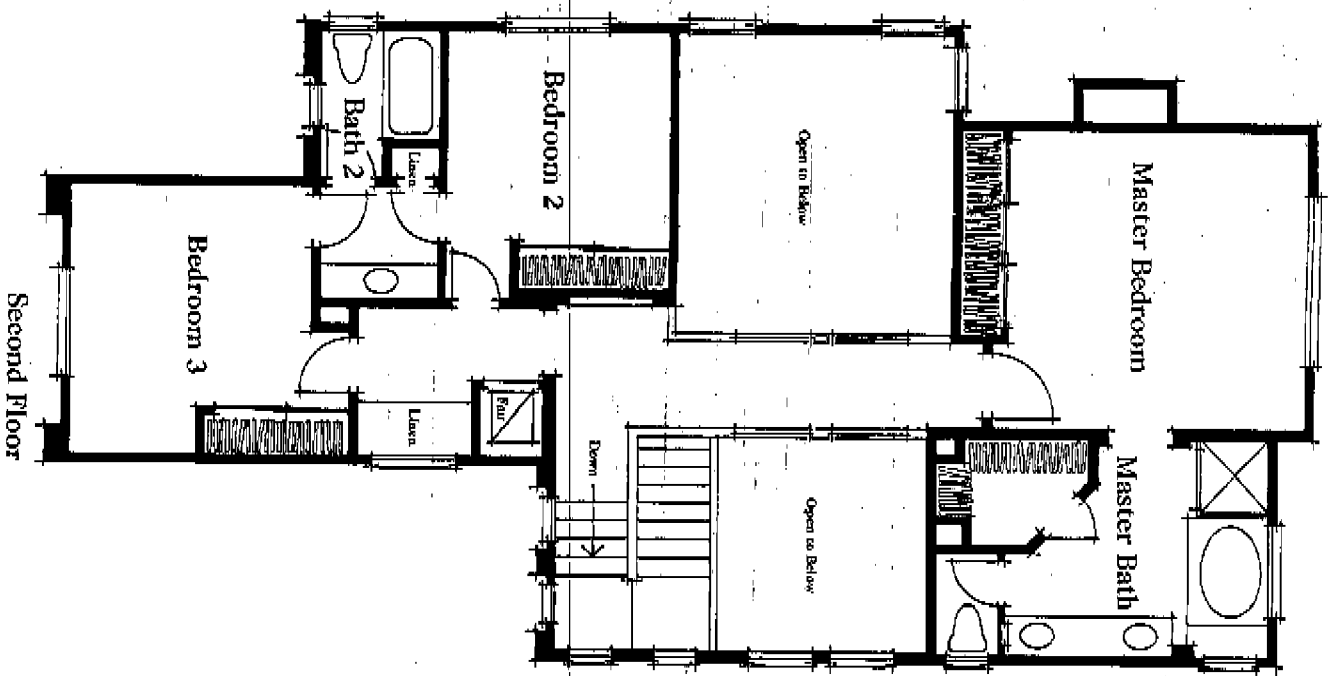


First Floor



Second Floor

The builder reserves the right at its sole discretion to modify maps, plans, specifications, materials, features, colors and price without notice.

Three Bedrooms plus Den or

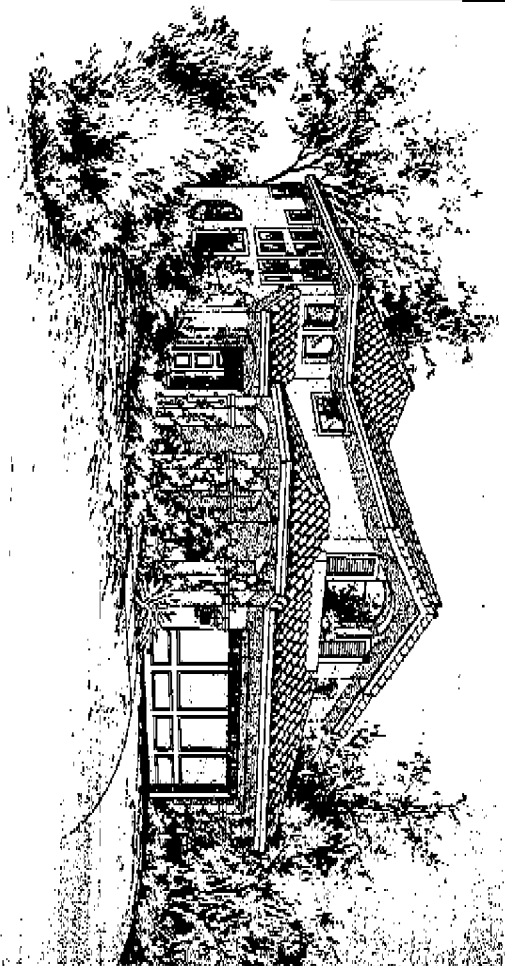
Optional Fourth Bedroom

Prudential

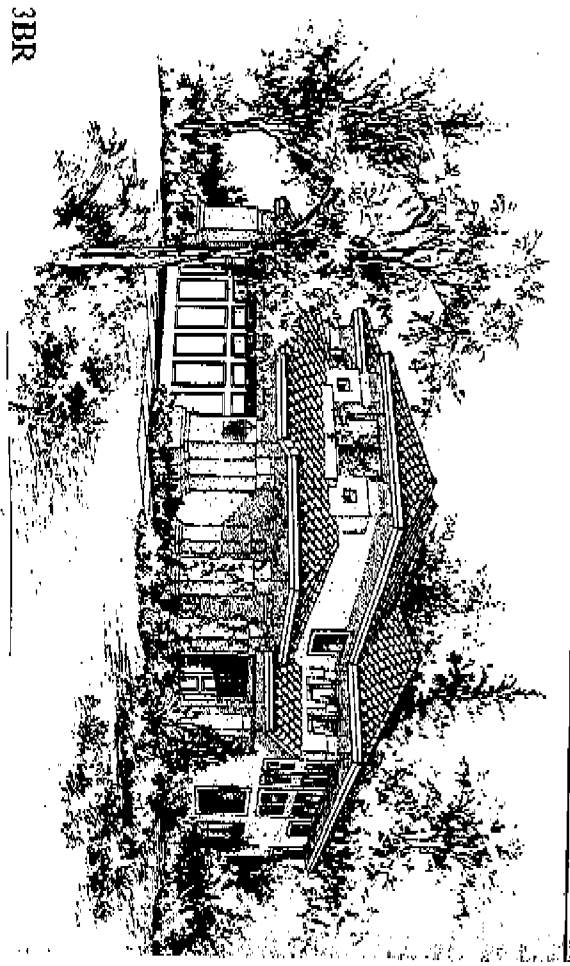
Three Baths

Approximately 2,198 square feet

3A



3BR



PLAN THRR

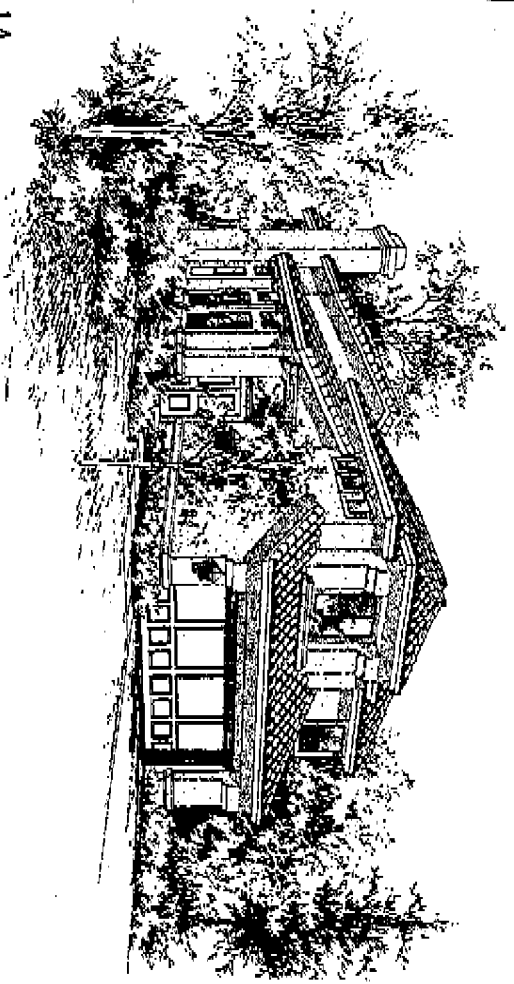
arpeggio

Three Bedrooms

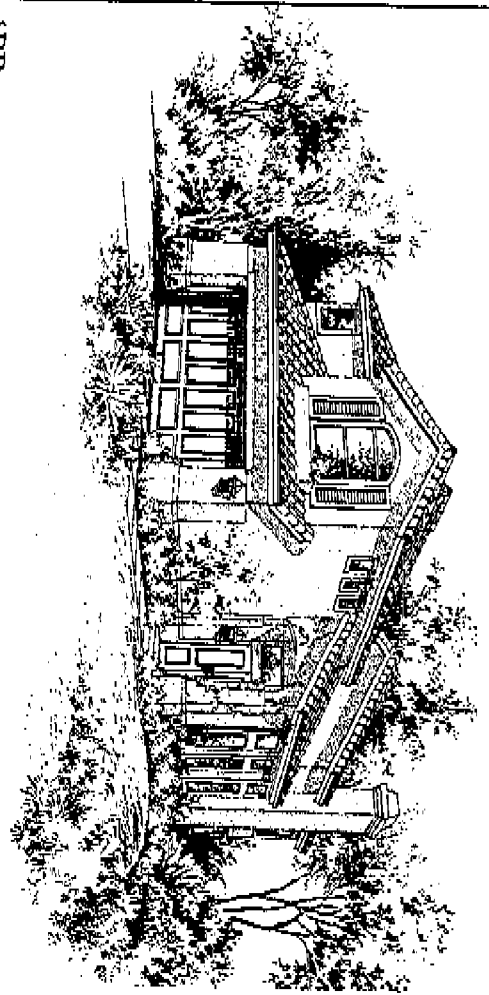
Two and One-Half Baths

Approximately 1,781 square feet

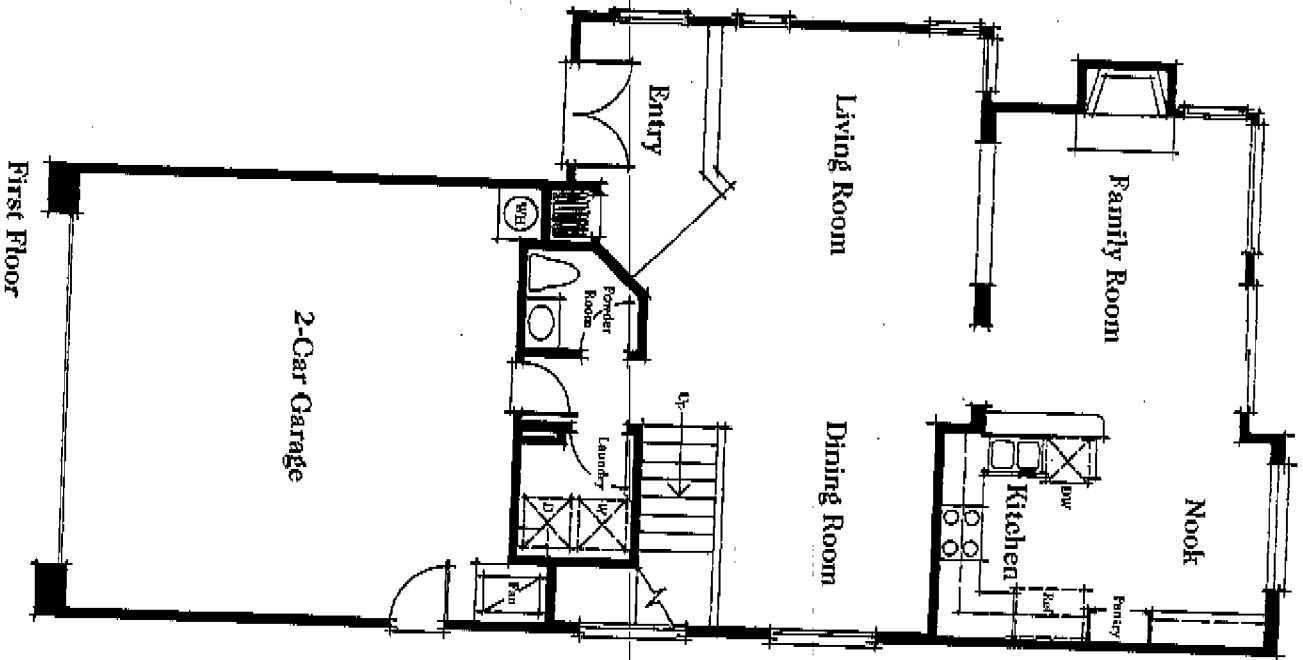
1A



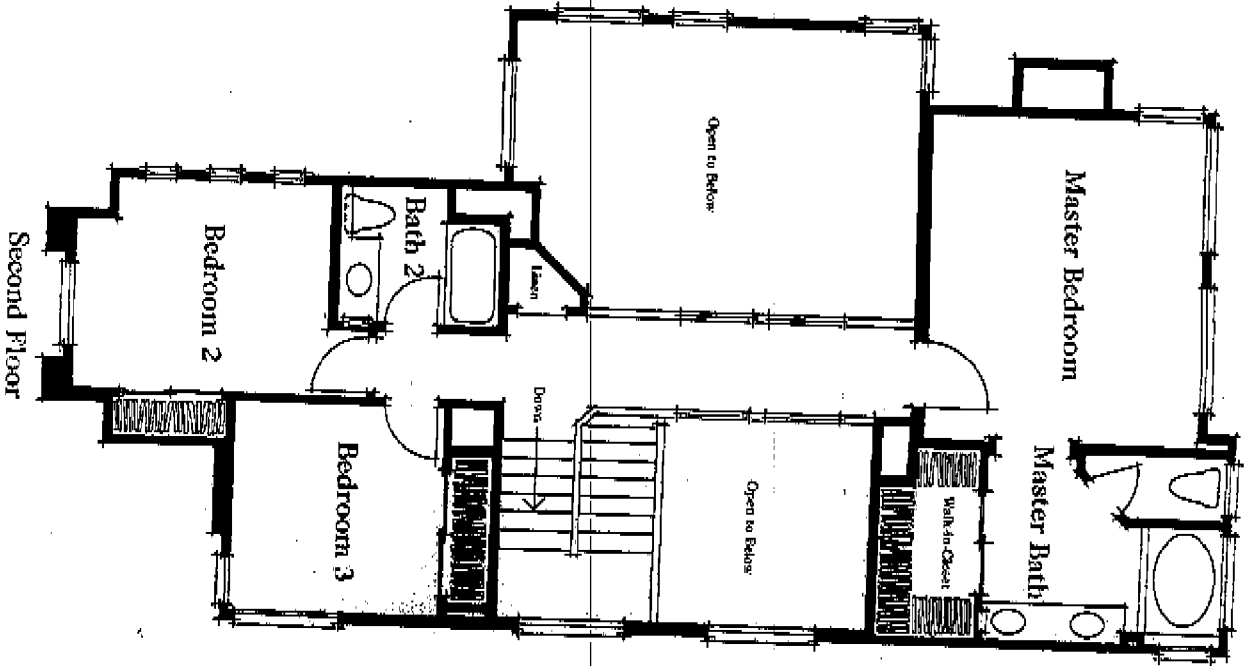
1BR



PLAN ONE

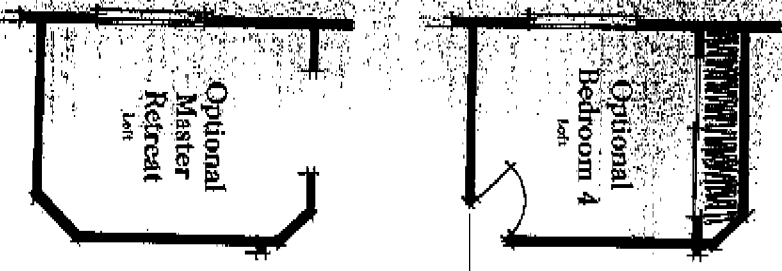
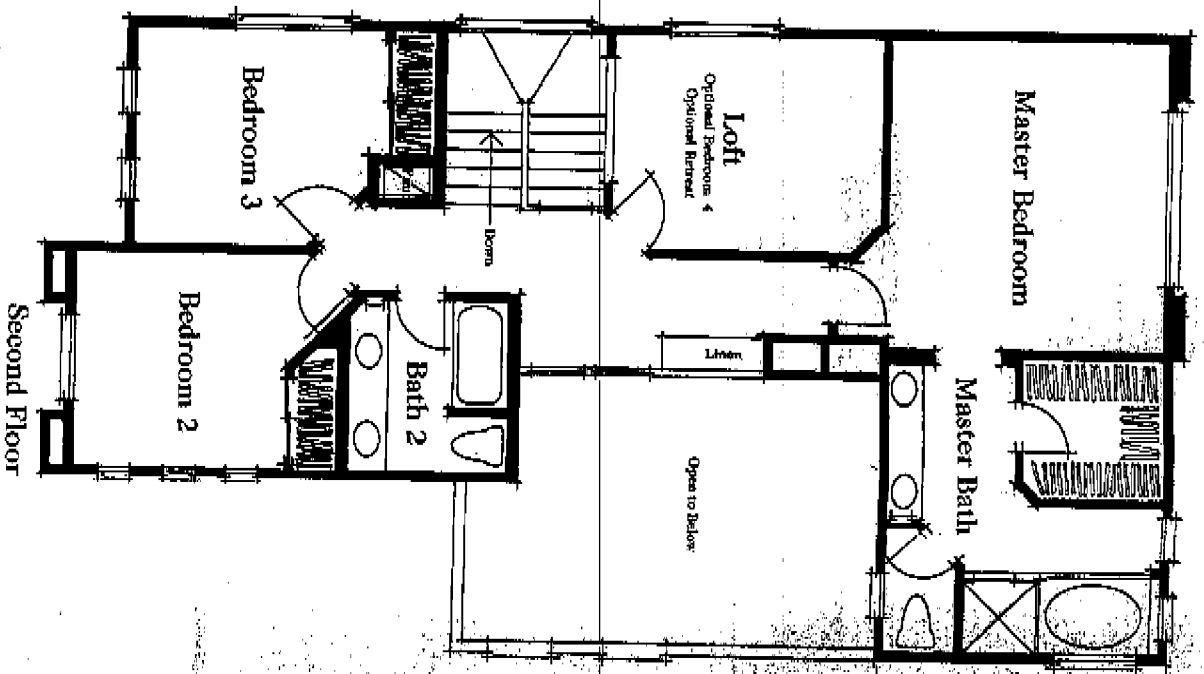
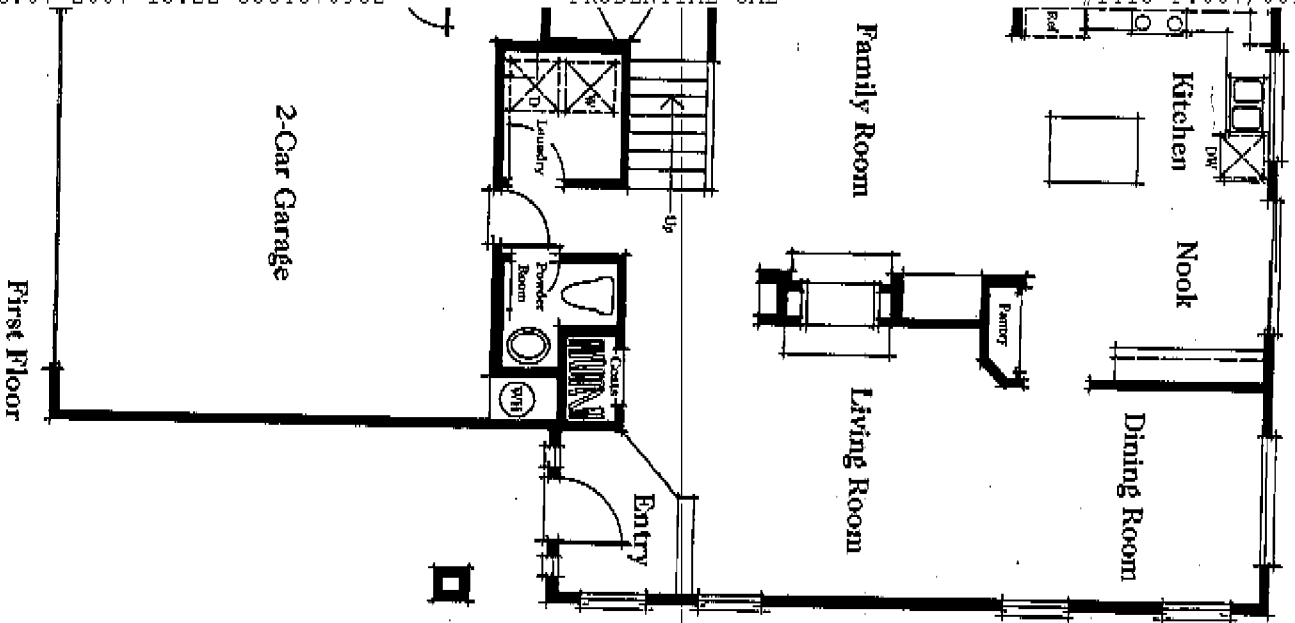


First Floor



Second Floor

The builder reserves the right at its sole discretion to modify maps, plans, specifications, materials, features, colors and price without notice.



The builder reserves the right at its sole discretion to modify maps, plans, specifications, materials, features, colors and price without notice.

Three Bedrooms plus Loft

Or Optional Fourth Bedroom

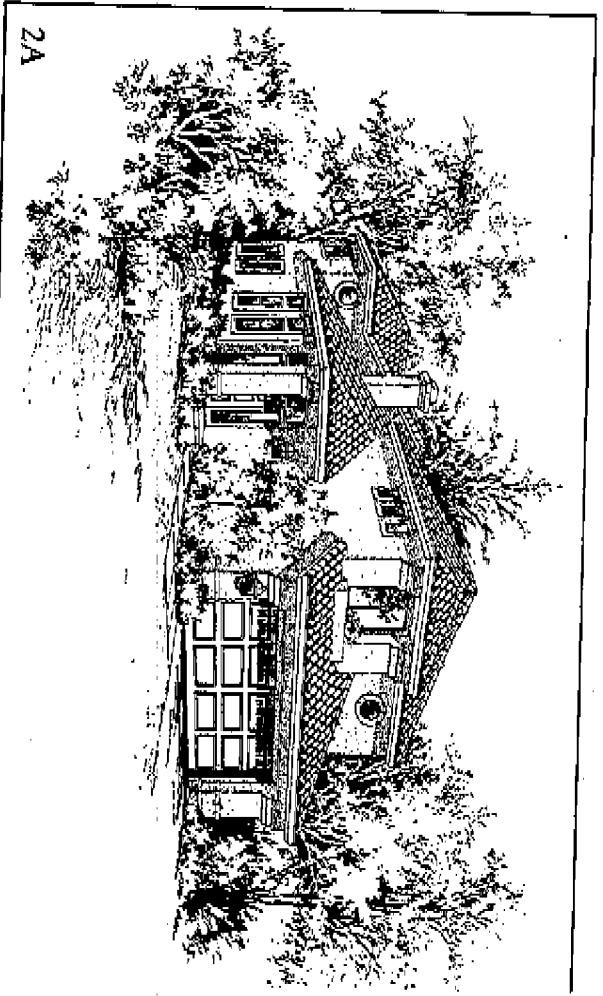
Or Master Retreat

Prudential

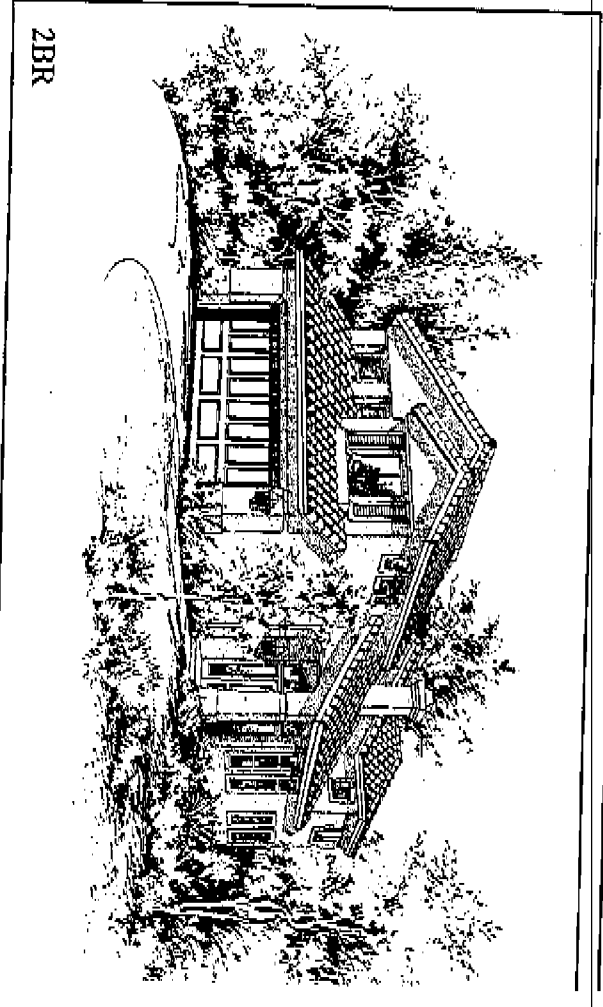
Two and One-Half Baths

Approximately 2,013 square feet

PLAN TWO



2A



2BR

STINCTIVE EXTERIORS

- Mediterranean stucco exterior elevations
- Durable, fire resistant concrete tile roofs
- Raised panel steel entry door with security lock and viewer, decorative knocker and kick-plate
- Decorative antique brass hardware
- Custom designed exterior light fixtures
- Energy efficient dual paned windows
- Concrete walks and driveways
- Painted cedar fencing
- Gas stub at rear of house for homeowner installed barbecue
- Front yard landscaping with sprinkler system

WANT INTERIORS

- Choice of ceramic tile or wood entry
- Armstrong™ no-wax vinyl floors in kitchen, laundry and second bath
- Designer selected plush carpet throughout all other living areas
- Custom rounded drywall corners at selected areas
- Designer selected light fixtures

- Rewired for telephone and cable

- Woodburning fireplace with glass doors and gas log lighter

- Convenient interior laundry room

- Gas forced air heating with energy efficient night set-back thermostat
- Recessed lighting per plan

KITCHENS

- Furniture finished oak cabinetry with finished interiors in choice of natural or white-wash stain

- Hand set ceramic tile countertops with full splash and accents

- General Electric™ self-cleaning oven, microwave, cooktop and dishwasher in black finish

- Kohler™ "Coralais" pull-out faucet

- Refrigerator area plumbed for ice maker

- Spacious pantries

MASTER SUITES

- Choice of wood or vinyl clad closet system

- Upgraded vinyl clad closet system

- Dual vanity with custom height mirrors

- Choice of hand set ceramic tile counter top designs with polished chrome plumbing fixtures

- Oval tub with separate shower and choice of ceramic tile surrounds

SELECT OPTIONS AVAILABLE

- Air conditioning

- Tub enclosures

- Mirrored wardrobe doors

- Additional selection of carpet, wood, vinyl and ceramic tile flooring

- Additional selection of countertop and bath surround surfaces in ceramic tile, Corinthian™ and Corian™ in kitchens and master baths

- White finish cabinetry

- White finish appliances

- Loft, Master Retreat, Bedroom

- and Den room options per plan

- Automatic garage door opener

The builder reserves the right in its sole discretion to make changes or modifications to maps, plans, specifications, materials, features and colors without notice. Prices may be increased or decreased at any time. Product type is subject to availability. Optional features may be included at additional cost, subject to construction cut-off dates. All maps, plans, landscaping and elevation renderings are artist's conceptions and not to scale.