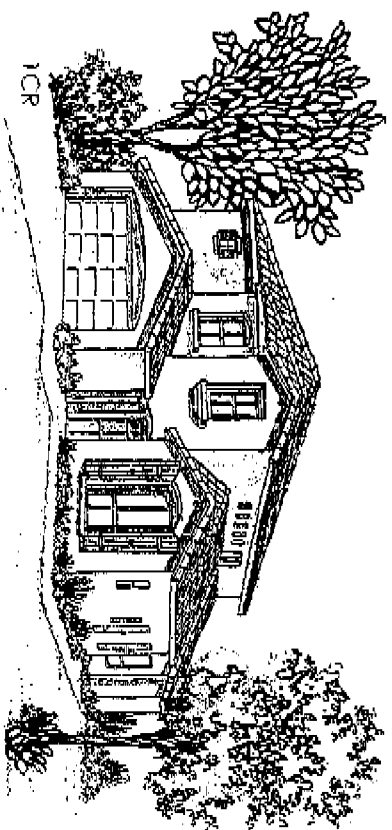
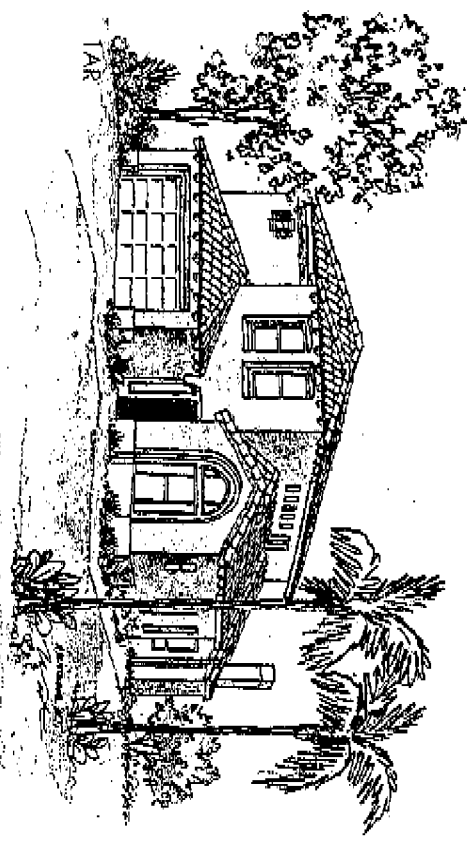
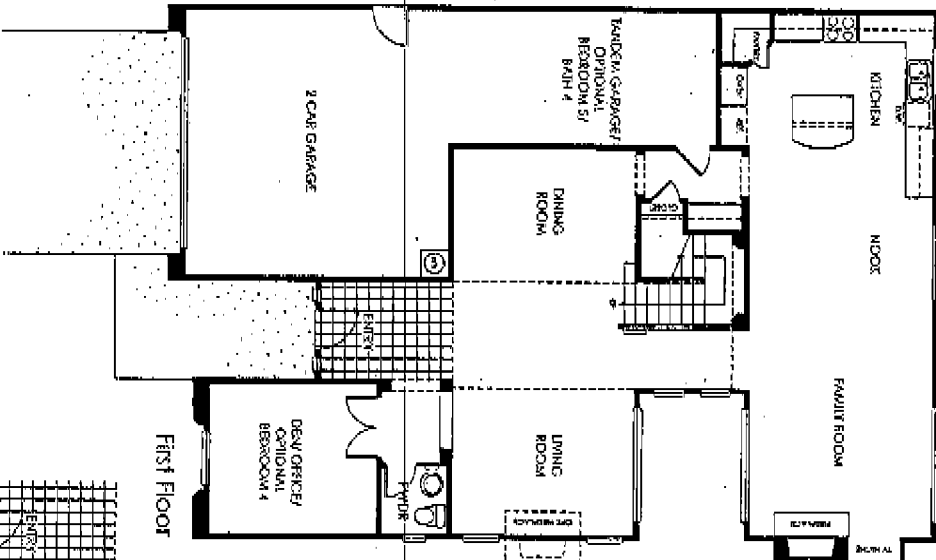
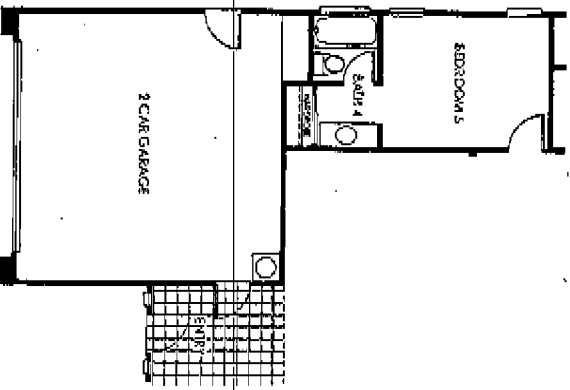


Plan One  
**Alcala**  
 3 Bedroom With Den, 2 1/2 Bath  
 2,701 Square Feet  
 2-Car Plus Tandem Garage



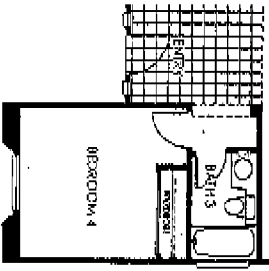


Optional Bedroom 5 & Bath 4

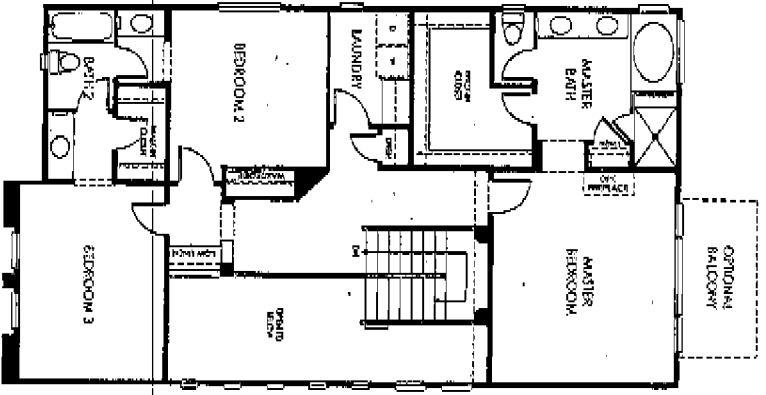


First Floor

Optional Bedroom 4



Second Floor

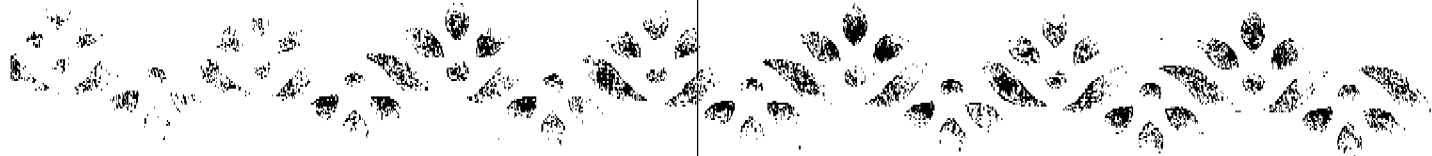
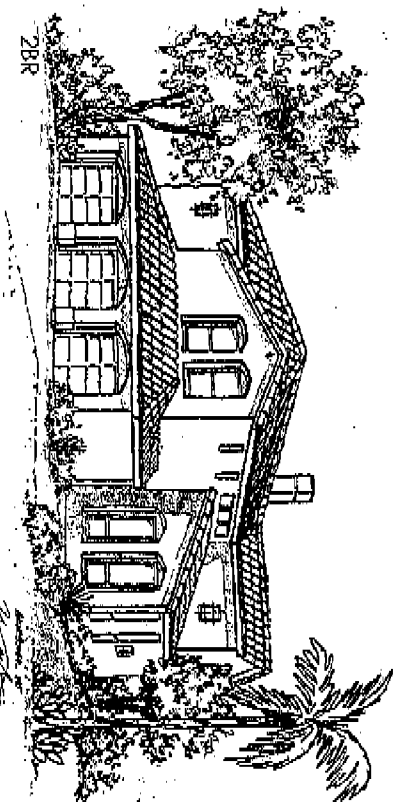
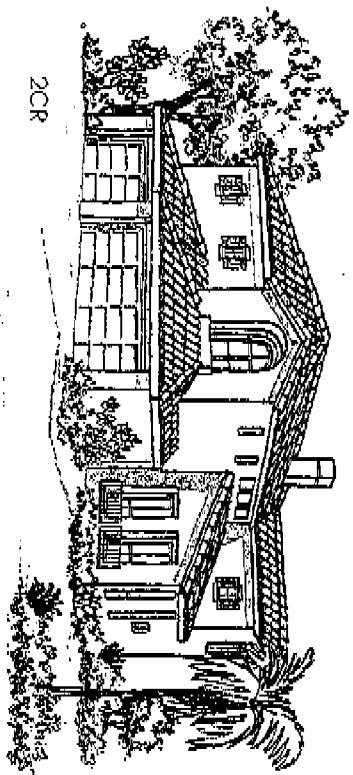
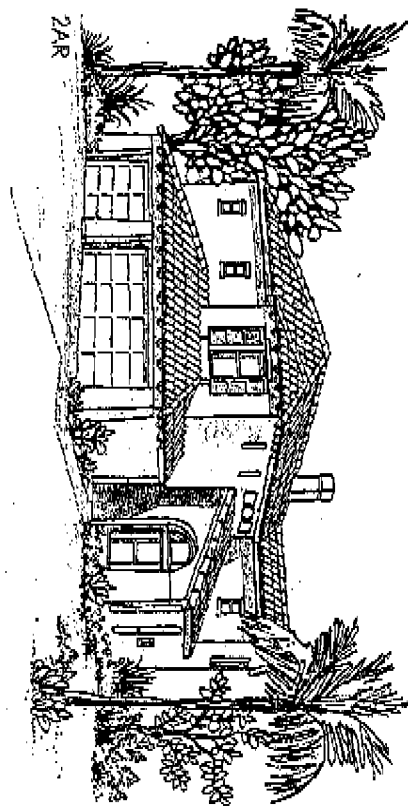


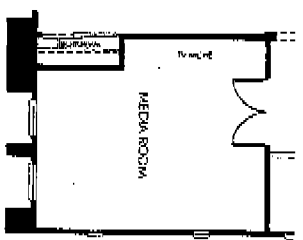
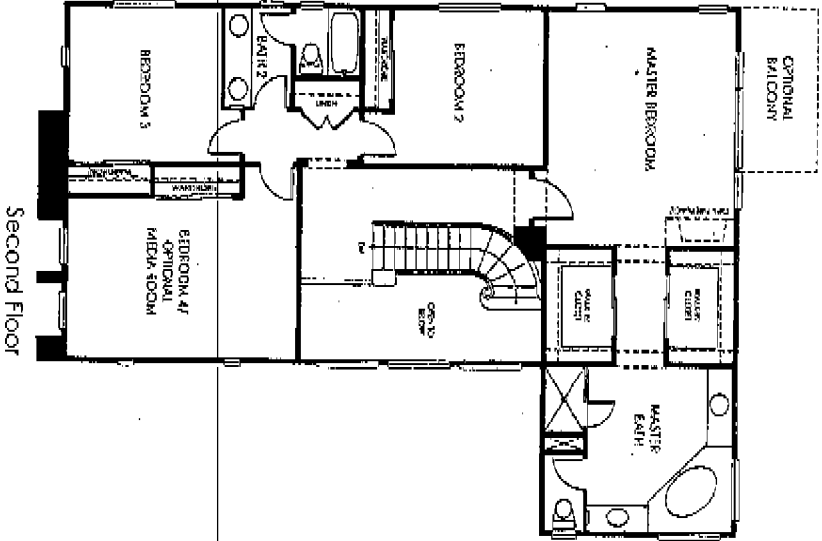
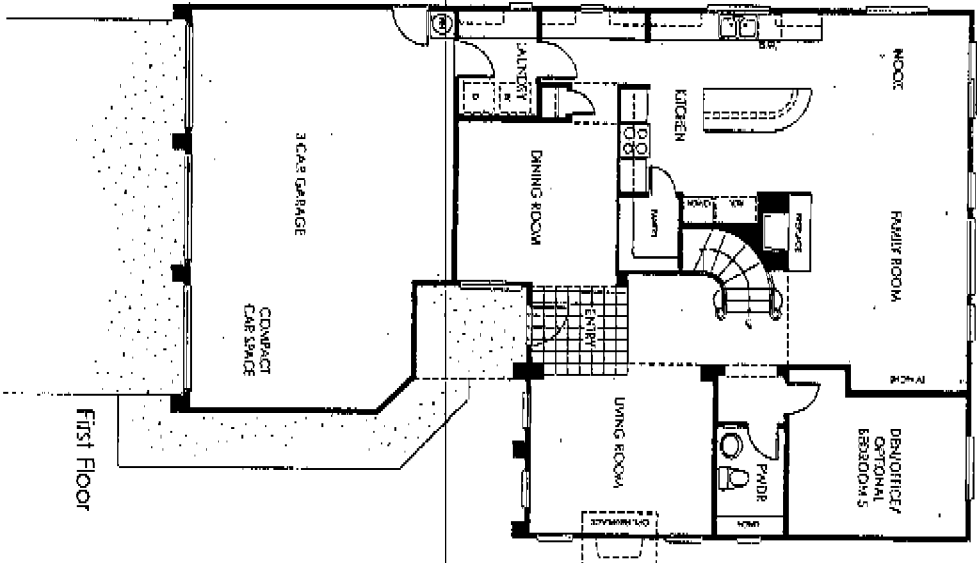
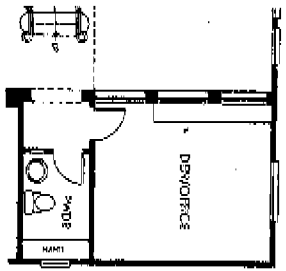
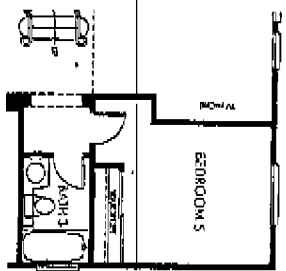
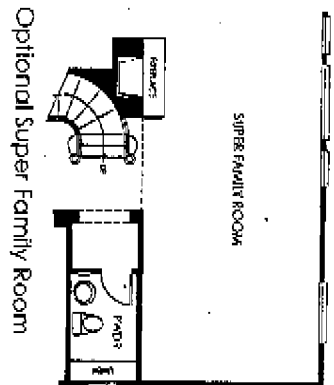
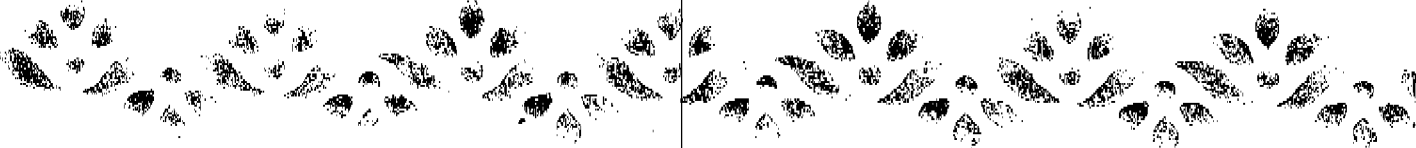
Reverse floorplan is shown.

P L A N T W O

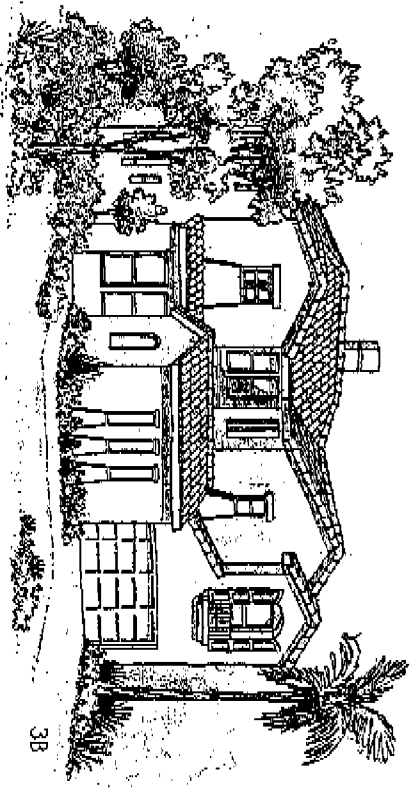
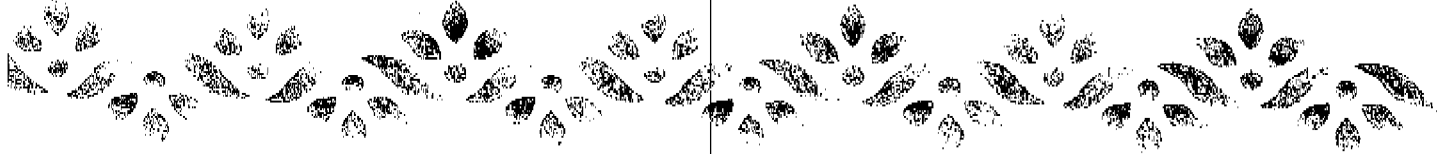
# Capistrano

4 Bedroom With Den, 2 1/2 Bath  
2,901 Square Feet  
3-Car Garage

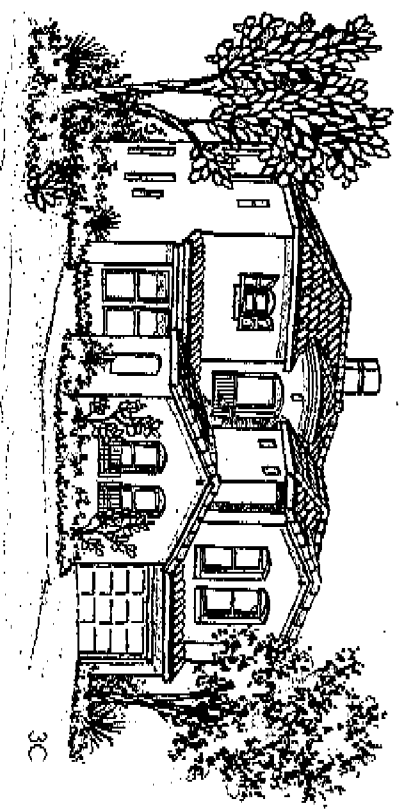




Reverse floorplan is shown.



3B

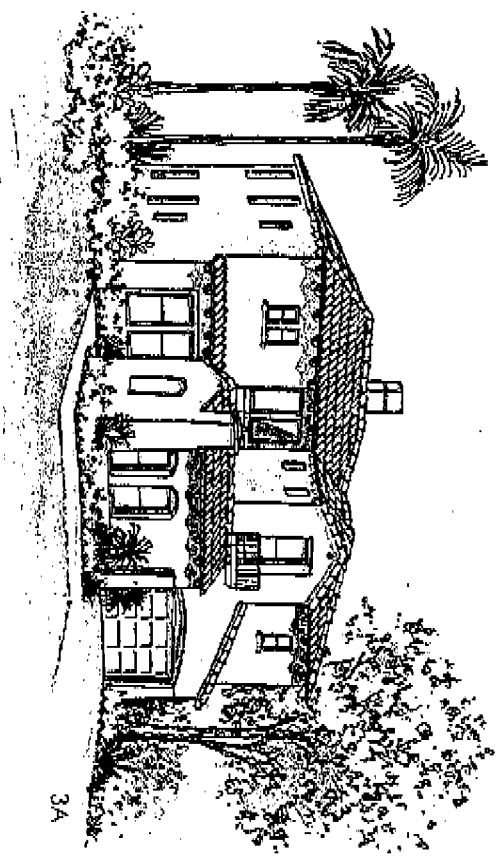


3C

# Franciscan

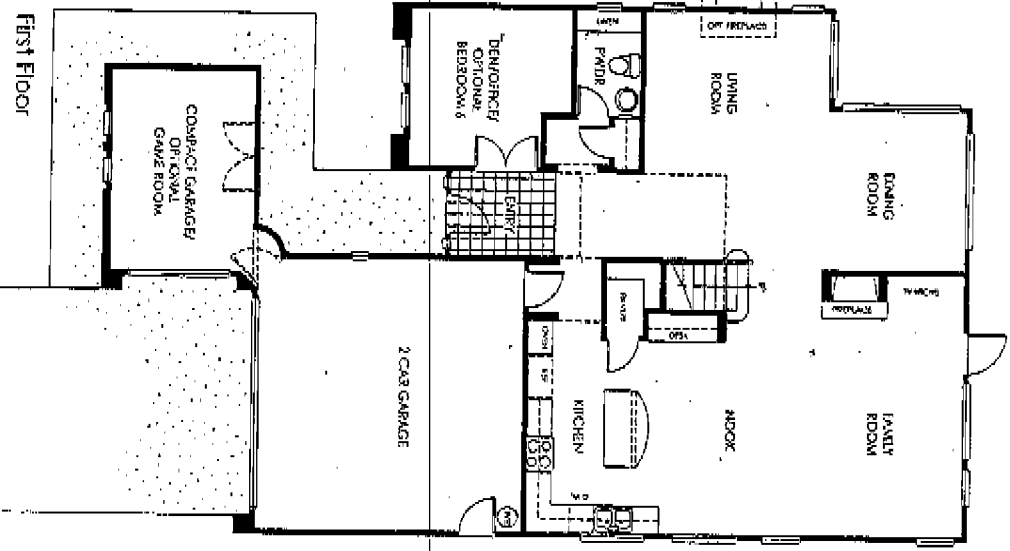
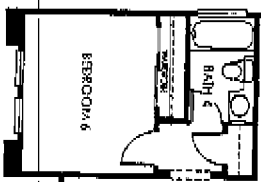
Plan three

5 Bedroom With Den, 3 1/2 Bath  
3,190 Square Feet  
3-Car Garage



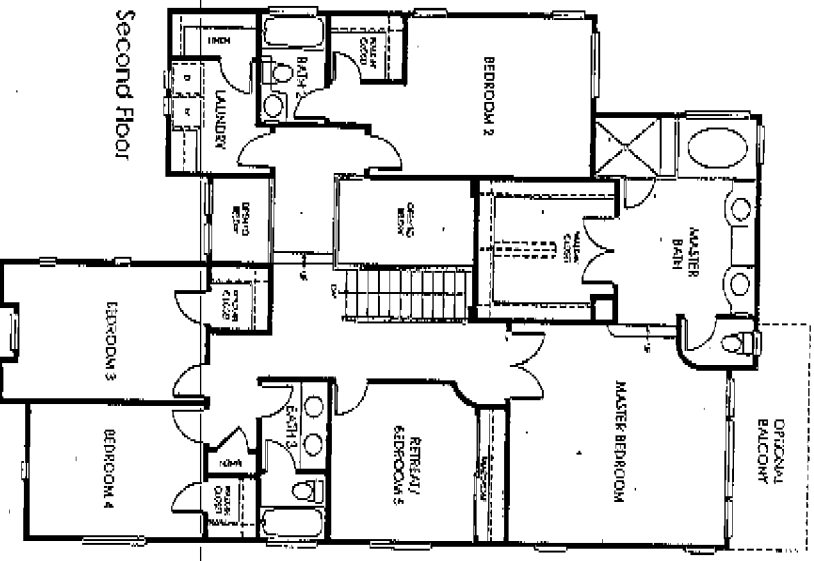
3A

Optional Bedroom 6 & Bath 4

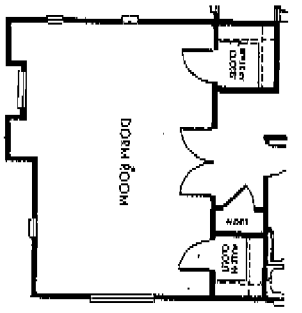


First Floor

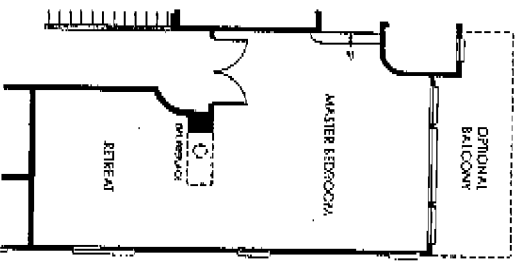
Second Floor



Optional Dorm Room



Optional Master Bedroom Retreat w/ 3 Sided Gas Fireplace



# Features

## Exteriors

- Distinctive exterior architectural styles reminiscent of Mission Hills and Santa Barbara
- Full-yard fencing with a side-yard access gate
- Dramatic 8' entry doors with security dead bolts
- Color coordinated S-tile fire resistant concrete roofing
- Two- and three-car garages
- Roll-up sectional garage doors
- Hand-rubbed bronze exterior door hardware
- Decorative exterior lighting
- Electrical outlet in front and rear of house

## Elegant Interior Details

- Custom ceramic tile entries
- Voluminous ceilings
- Bullnose corners
- Colonial interior doors throughout with elegant hardware
- Generous linen closets and storage areas
- Wood-burning fireplaces with custom hearths and mantels
- Entertainment niches
- Staircase with solid oak handrails and custom detailing
- Plush carpeting throughout living areas
- Easy-care vinyl flooring in kitchen, laundry and secondary baths
- Designer-selected light fixtures
- Interior laundry areas with storage cabinets
- Pre-wired for cable TV and telephone in master bedroom and family room
- Smoke detectors in all bedrooms

## Gourmet Kitchens

- Quality European-style oak cabinetry
- Gourmet islands in roll plans
- 8" ceramic tile countertops in white or ivory
- GE appliances including:
  - Self-cleaning double oven in black or white
  - Profile 5 burner gas cooktop in black or white
  - Pots/crocker electronic dishwasher in black or white
  - Microwave with hood in black or white
- Price Pfister faucet with pull-out spray spout
- Recessed lighting
- Spacious pantries
- Sound insulated heavy-duty garbage disposal
- Plumbed for automatic ice-maker
- Cast iron two compartment porcelain sink

## Master Suites

- Spacious 8' colonist entry doors
- Expansive walk-in closets
- Top quality European-style oak cabinetry
- Separate oval tub and shower with glass enclosure
- 8" ceramic tile countertops, shower and tub surrounds
- Double china basins with Price Pfister widespread fixtures
- Large vanity mirrors
- Recessed lighting

## Secondary Baths

- Ceramic tile vanity tops with china lavs
- Price Pfister plumbing fixtures

## Energy Saving Features

- Dual-glazed vinyl windows throughout
- Central forced air heating and air conditioning units, with set-back thermostat
- 50-gallon energy-efficient gas water heater
- Water-saving plumbing fixtures
- Temperature balancing shower valves

## Options to Customize Your Home

- Enhancing room configurations available in selected areas
- Ceramic tile, granite or granite countertops in a selection of designer colors in kitchen and baths
- Additional cabinetry options in a variety of styles and colors
- Glass doors on upper kitchen cabinets
- Trash compactor in kitchen
- Fireplace in master bedrooms and living rooms
- Mahogany entry door
- Balcony off master bedroom
- Security system
- Intercom
- Central vacuum
- Water filtration system
- Instant hot water supply in kitchen
- Designer glass panels for garage door
- Rain-gutter package
- Entertainment system with media and audio options

In the interest of continuing product improvement, Builder reserves the right to alter plans, specifications, designs, appliances, features, ornaments and pricing without prior notice. All maps, plans and illustrations are artist conceptions. Square footages quoted are approximate.