



 **ROCKLEDGE**  

---

**LA COSTA OAKS**





Live at RockLedge at La Costa Oaks and experience a home with its roots in a traditional neighborhood, but with a metropolitan twist that simply breaks the mold. A private neighborhood of just 43 homes, RockLedge makes an immediate statement with its sweeping ocean and valley views, and community-friendly cul-de-sacs. Inside, we've paid special attention to details – dynamic, functional floorplans and modern design finishes – and created homes with the ultimate livability in mind.

As a La Costa Oaks resident, not only do you attend top-rated schools in the Encinitas Union and San Dieguito Union High School Districts, you'll have endless recreation options just outside your front door. With access to the Oaks Club and The Splash around the corner from RockLedge, swimming, playing and entertaining are everyday options. And with beaches, hiking, restaurants and shopping all minutes away, the "suburbs" never felt so cool.

RockLedge at La Costa Oaks. A community that colors so far outside the lines, you forget they exist.



COASTAL VIEWS AND SUPERIOR ARCHITECTURE.  
CUL-DE-SAC NEIGHBORHOODS AND SUPERB SCHOOLS.  
ROCKLEDGE IS SAN DIEGO LIVING AT ITS BEST.

*From bike trails to beach umbrellas, RockLedge is all about lifestyle.*





**PLAN 1BR**

1,913 Sq. Ft. • 3 Bedrooms • 2½ Baths • 2-Car Garage • Optional Deck



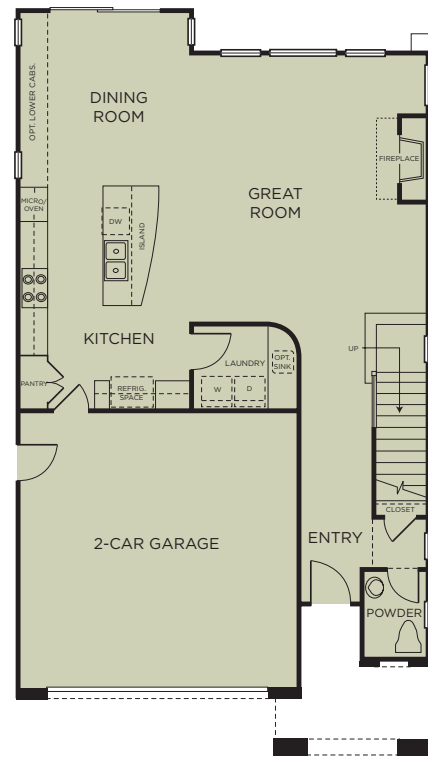
SPANISH (AR)



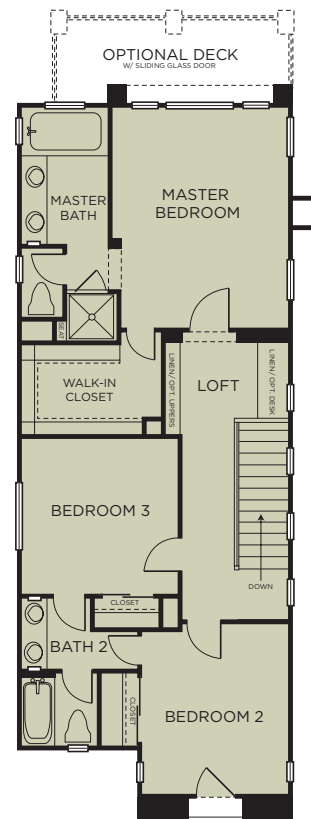
SANTA BARBARA (BR-MODELED)



TUSCAN (CR)



FIRST STORY



SECOND STORY

**PLAN 2C**

2,132 Sq. Ft. • 4 Bedrooms • 3 Baths • 2-Car Garage • Optional Den • Optional Retreat • Optional Deck



SPANISH (A)



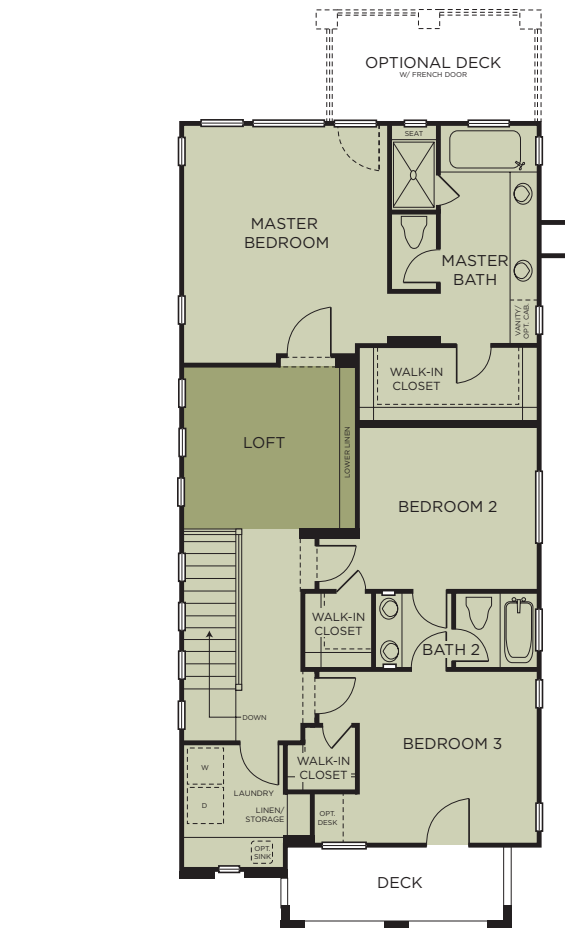
SANTA BARBARA (B)



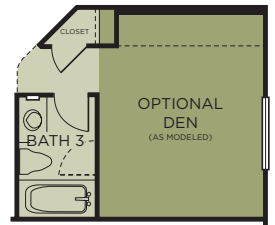
TUSCAN (C-MODELED)



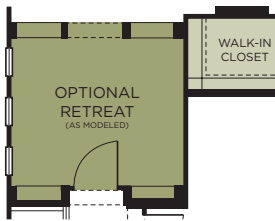
FIRST STORY



SECOND STORY



OPTIONAL DEN AT BEDROOM 4



OPTIONAL RETREAT AT LOFT

ColRich Residential reserves the right to change elevations, specifications, materials, prices and terms without prior notice. All square footage is approximate. All maps, plans, landscaping and elevation renderings are artists' conception and are not to scale. Window locations, sizes and styles, ceiling heights, entry and room dimensions vary per plan and elevation. The availability of certain options is subject to construction status and schedule. Optional features may be predetermined and included at an additional cost on select home sites. Please see a Sales Representative for details.

ColRich Residential reserves the right to change elevations, specifications, materials, prices and terms without prior notice. All square footage is approximate. All maps, plans, landscaping and elevation renderings are artists' conception and are not to scale. Window locations, sizes and styles, ceiling heights, entry and room dimensions vary per plan and elevation. The availability of certain options is subject to construction status and schedule. Optional features may be predetermined and included at an additional cost on select home sites. Please see a Sales Representative for details.



**PLAN 3A**  
 2,463 Sq. Ft. • 4 Bedrooms + Loft • 3 Baths • 2-Car Garage • Optional 5th Bedroom • Optional Deck



SPANISH (A-MODELED)

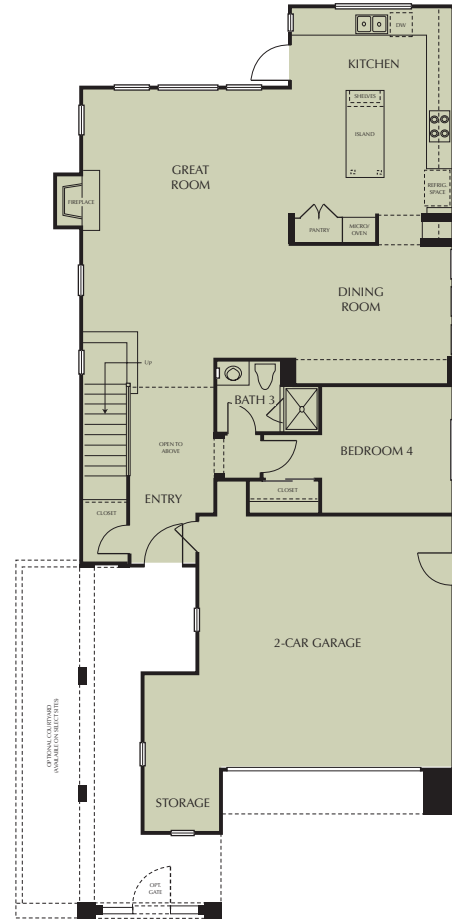


SANTA BARBARA (B)

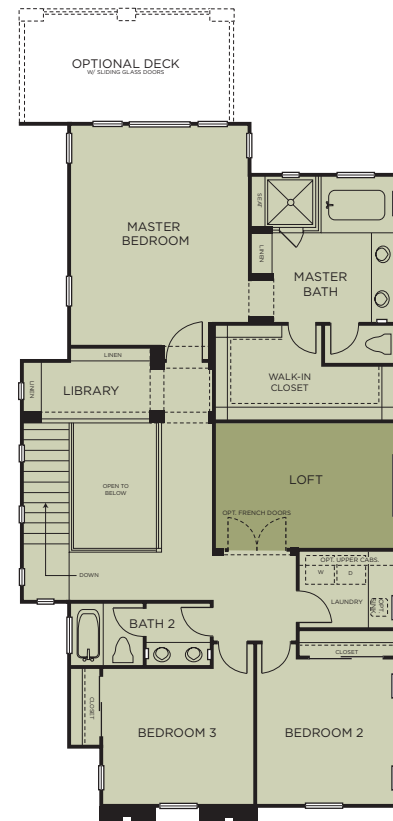


TUSCAN (C)

ColRich Residential reserves the right to change elevations, specifications, materials, prices and terms without prior notice. All square footage is approximate. All maps, plans, landscaping and elevation renderings are artists' conception and are not to scale. Window locations, sizes and styles, ceiling heights, entry and room dimensions vary per plan and elevation. The availability of certain options is subject to construction status and schedule. Optional features may be predetermined and included at an additional cost on select home sites. Please see a Sales Representative for details.



FIRST STORY



SECOND STORY



OPTIONAL BEDROOM 4 AT DEN

At ColRich, we believe in and encourage individuality in every home. That's why we are pleased to offer a host of options and upgrades that allow you to personalize your home in a variety of ways. Please see a RockLedge Sales Representative for more information.

**FEATURES**

**ARCHITECTURE AND DESIGN FOR TODAY'S LIFESTYLE:**

- Spanish, Santa Barbara and Tuscan architectural elevations with hand-crafted iron detail
- Spacious 2-car garages with insulated, 8' sectional roll-up garage doors per elevation
- Fully dry-walled garage interiors
- Fire-resistant concrete roof tiles selected by architect to complement color selections
- Gas stub out for barbeque at rear yard
- Hose bibs at front and rear yard
- Side and rear yard fencing with wood gates with view iron fencing along rear yards (varies per home site – not available on every lot)
- Authentically styled 8' fiberglass entry door featuring elegant oil-rubbed bronze hardware
- Superior quality Therma-Tru Force 5 French doors with 3-point locking system
- Post-tension foundations

**FUNCTIONAL INTERIORS WITH DESIGNER TOUCHES:**

- Luxurious flooring throughout including 20" x 20" tile at Entry, Kitchen and Master Bath, with designer vinyl at secondary Bathrooms and Laundry Room
- Great Room gas fireplaces with stylish pre-cast surrounds
- Custom painted wood stair system
- Price Pfister Santiago-style polished chrome plumbing fixtures throughout
- Spacious Great Rooms, complete with pre-wire for a plasma TV
- Striking 3½" square base mouldings throughout
- Stylish bull-nose frameless door jambs
- Secondary Baths including Wenge or Maple cabinets in an Espresso finish with 6" Satin Nickel bar pulls, solid surface countertop and fiberglass tub/shower
- Interior Laundry Rooms with white cabinets and solid surface countertop
- Raised five-panel interior doors and wardrobe doors
- Pedestal Sink with beveled mirror at Powder Bath (plan 1)
- Designer-selected Brushed Nickel chandelier at Dining Room
- Tasteful polished chrome light fixtures in Powder and Secondary Baths
- Elegant polished chrome interior lever door handles throughout home

- High-speed CAT 5 phone/data wiring and RG6 cable outlets throughout with structured wiring distribution panel for computer data networking, multi-use telephone service and video distribution
- Electronic smoke detectors

**GOURMET KITCHENS – THE CENTER OF IT ALL:**

- GE Appliances in Stainless Steel finish including:
  - Energy Star dishwasher
  - Built-in microwave with turntable
  - 30" gas 4-burner cook top
  - Self-cleaning oven
- Caesarstone countertops in Baja or Eggshell colors with 6" backsplash and full backsplash at cook top
- Wenge or Maple cabinets in an Espresso finish with 6" Satin Nickel bar pulls
- Gourmet kitchen islands with Caesarstone countertops
- Stainless steel dual-bowl sink with Price Pfister stainless pull-out faucet
- Extra deep pots and pans drawers for easy access to cook top

**LAVISH MASTER SUITES:**

- Wenge or Maple cabinets in an Espresso finish with 6" Satin Nickel pulls
- Caesarstone slab countertops at pullman in Baja or Eggshell color
- 6" x 6" ceramic tiled tub and shower surrounds, with glass "Skylites" accent tile (warm or cool color selection available)
- 6' soaking tubs and separate shower with semi-frameless glass enclosures
- Separate basin counters with elegant vanity (per plan)
- Elegant recessed can lighting and full-height beveled mirrors at pullman
- Price Pfister Santiago-style polished chrome plumbing hardware with coordinating chrome bath hardware

**RESPONSIBLE ENERGY-SAVING FEATURES:**

- Radiant barrier roof to assist in reducing home energy usage
- Low 'E' dual-glazed Milgard windows
- Tankless water heater to provide unlimited hot water and cut down on energy usage
- Gas-forced air heating with digital thermostat
- Low-energy use fluorescent lighting in kitchen and bathrooms

ColRich Residential reserves the right to change elevations, specifications, materials, prices and terms without prior notice. All square footage is approximate. All maps, plans, landscaping and elevation renderings are artists' conception and are not to scale. Window locations, sizes and styles, ceiling heights, entry and room dimensions vary per plan and elevation. The availability of certain options is subject to construction status and schedule. Optional features may be predetermined and included at an additional cost on select home sites. Please see a Sales Representative for details.

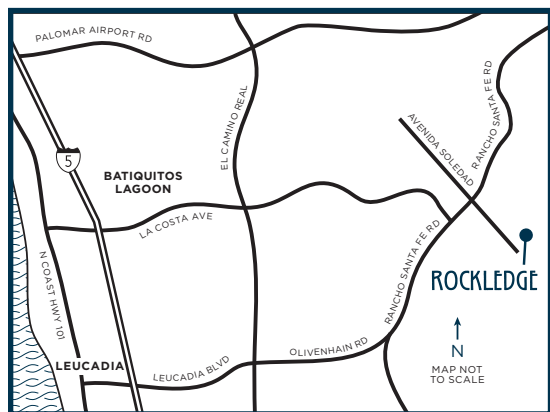




*Generations of Excellence*

Headquartered in San Diego, we built ColRich on the foundation of integrity, value and service. Our family-run company has become an industry landmark, continually recognized for high design and attention to detail in both product and service. For more than three decades, homebuyers have confidently depended on ColRich when they decided to invest in their family's future. Our unwavering reputation for excellence is evidenced by the number of repeat buyers who can't live without a ColRich home. We look forward to being a part of one of your life's most important milestones now and for years to come.

[www.ColRich.com](http://www.ColRich.com)



3618 CORTE CASERA CARLSBAD, CA 92009  
760.750.1999 PH 760.752.1999 FAX  
ROCKLEDGE@COLRICH.COM  
[WWW.COLRICH.COM/ROCKLEDGE](http://WWW.COLRICH.COM/ROCKLEDGE)



at Villages of La Costa

