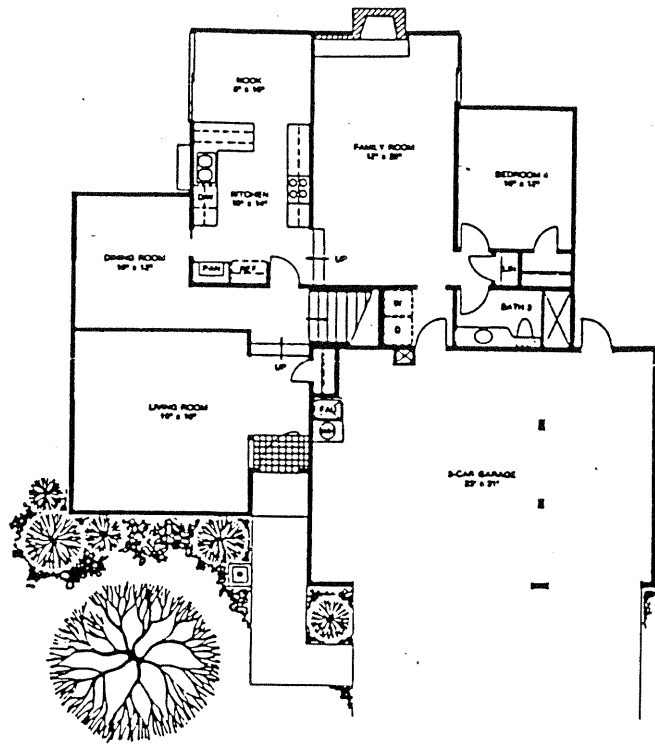
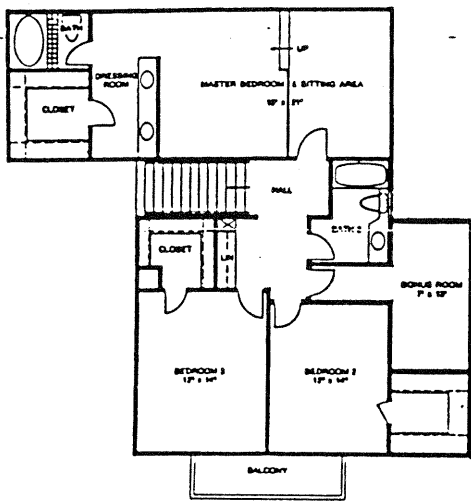


**San Elijo Hills West**  
**in Solana Beach**



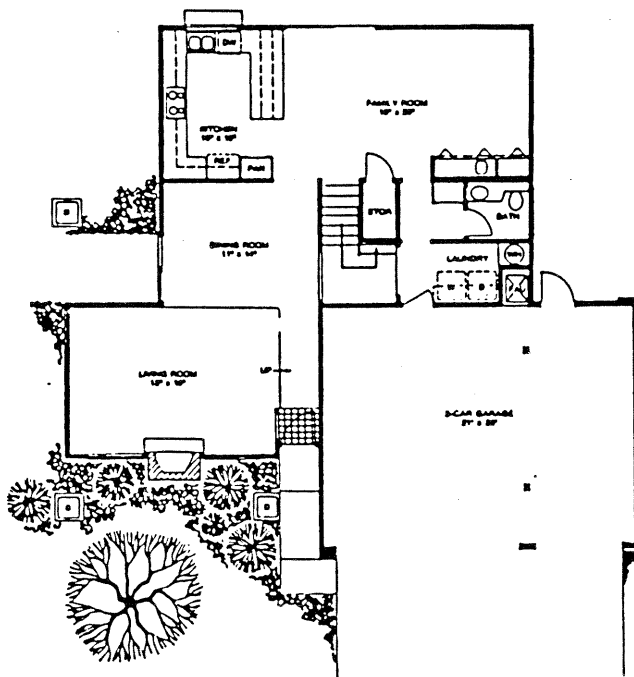
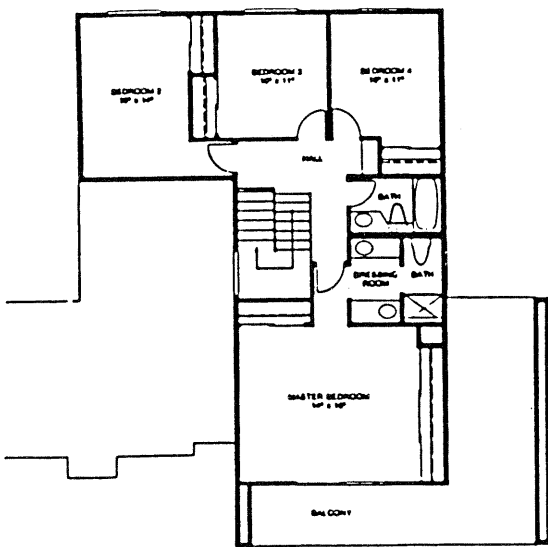
**SAN ELIJO HILLS WEST**

Model: PLAN 15  
 Area: 1753 B/T Code: SEW  
 Approximate SQ/FT: 2609

- Two-Story
- Four Bedrooms
- ★ Walk-in Closets, all bedrooms
- Three Full Baths
- Breakfast Nook
- ★ Bonus Room upstairs
- ★ 3-Car Garage
- 2,609 Sq. Ft. (living area)

★ New/feature since model home was built

(Plans subject to revision) (Room sizes are approximate)



**SAN ELIJO HILLS WEST**

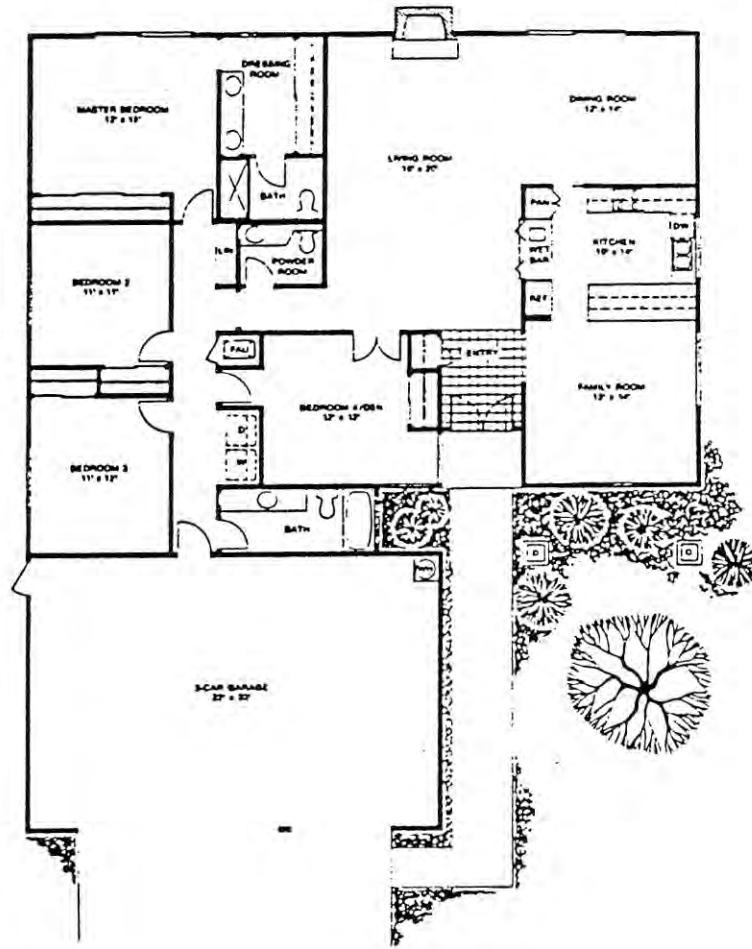
Model: PLAN 14  
 Area: 1753 B/T Code: SEW  
 Approximate SQ/FT: 2171

★ New/feature since model home was built

(Plans subject to revision) (Room sizes are approximate)

- Four Bedrooms  
(or 3 plus den)
- Two Full Baths
- \* Powder Room
- \* Wet Bar
- \* 3-Car Garage
- 2,140 Sq. Ft. (living area)

\* New feature since model home was built.

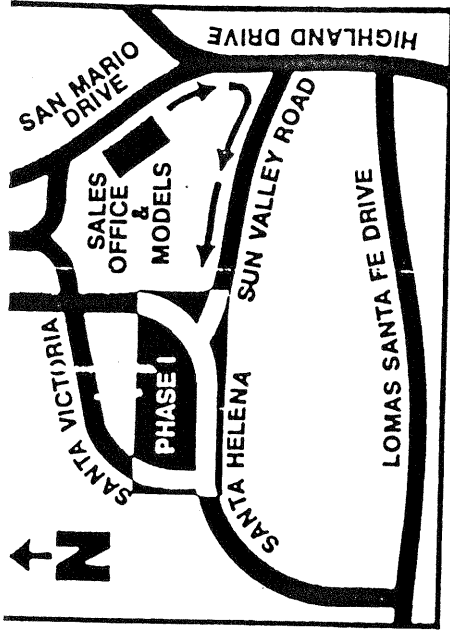


**SAN ELIJO HILLS WEST**

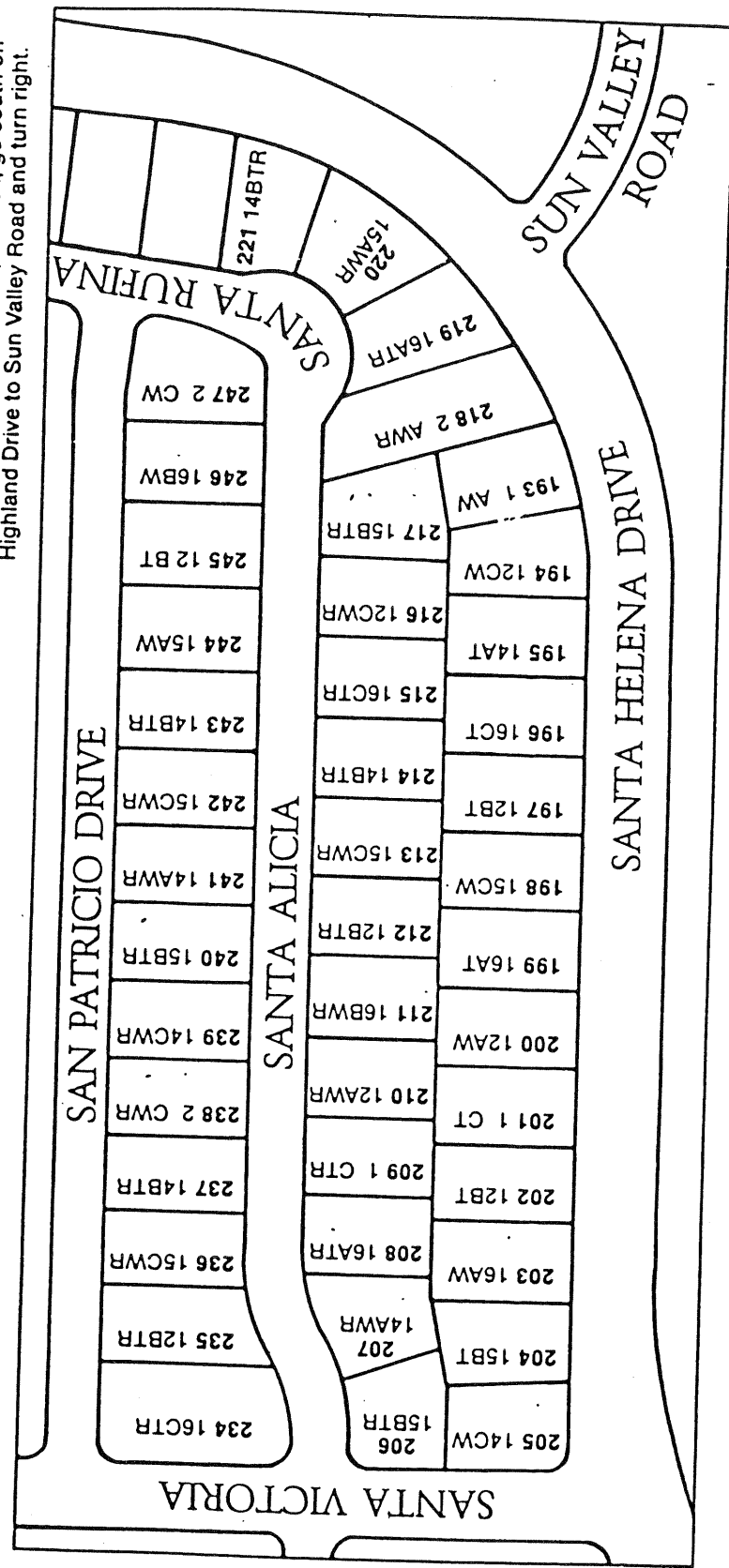
Model: PLAN 16

Area: 1753 B/T Code: SEW

Approximate SQ/FT: 2140



To reach San Elijo Hills West, Phase I, go south on Highland Drive to Sun Valley Road and turn right.



**SAN ELIJO HILLS WEST**

Site Plan - B/T: SEW  
 Caution: There may be additions or changes to these site plans