



San Lorenza





## RESIDENCE ONE

Approximately 1,813 sq. ft. to 1,968 sq. ft. • 3 bedrooms • 2½ baths • 2 car garage  
Optional retreat • Optional loft in lieu of bedroom 2 • Optional deck at master bedroom  
Optional fireplace at living room



1A

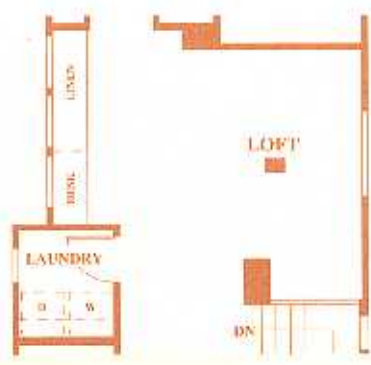
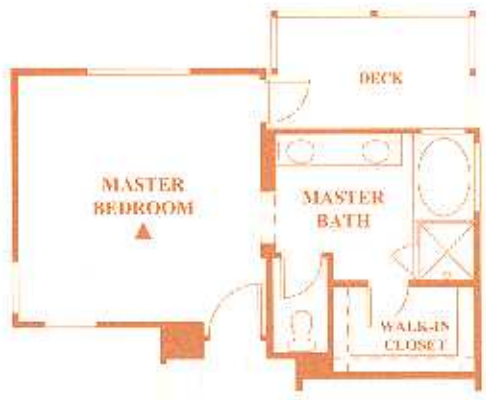
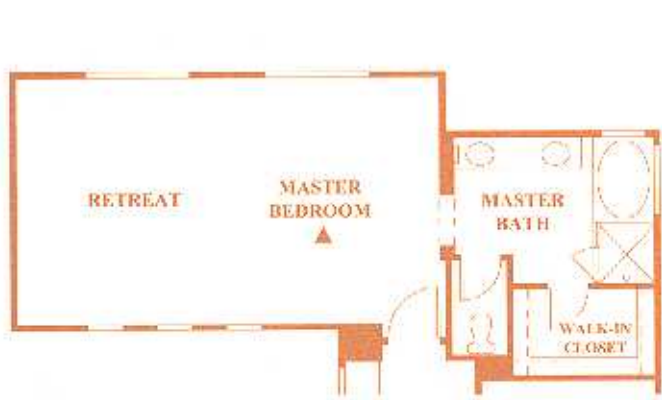


1B (model)

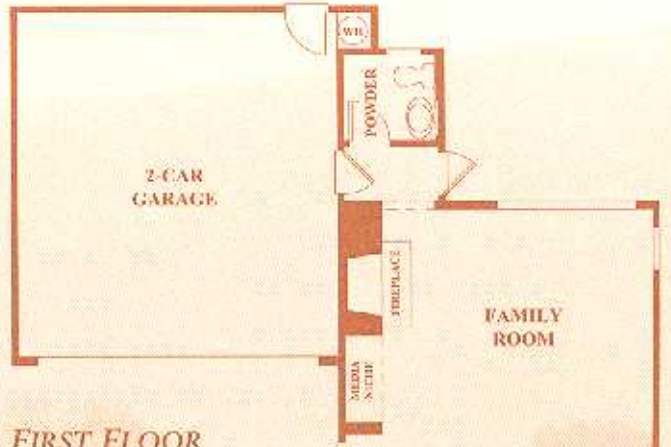


1C

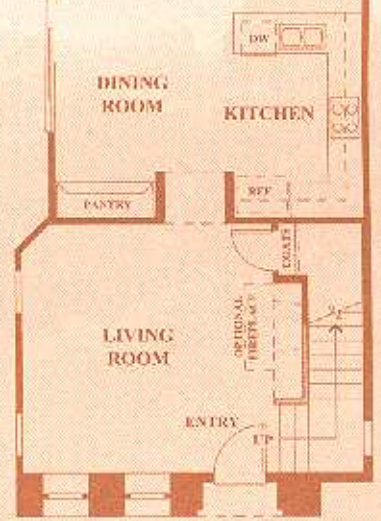




SECOND FLOOR



FIRST FLOOR





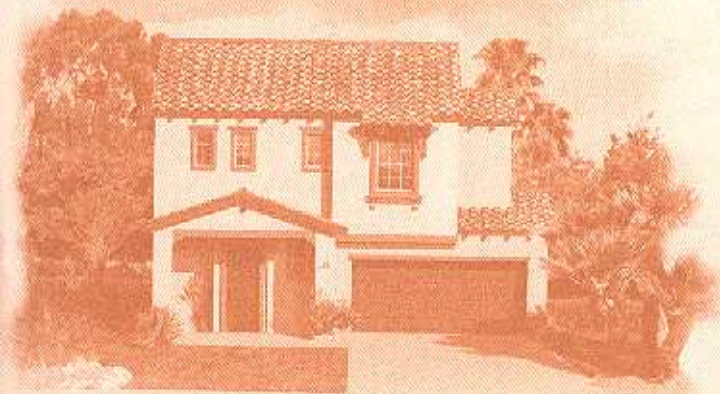
## RESIDENCE TWO

Approximately 1,933 sq. ft. • 4 bedrooms • 2½ baths • 2-car garage

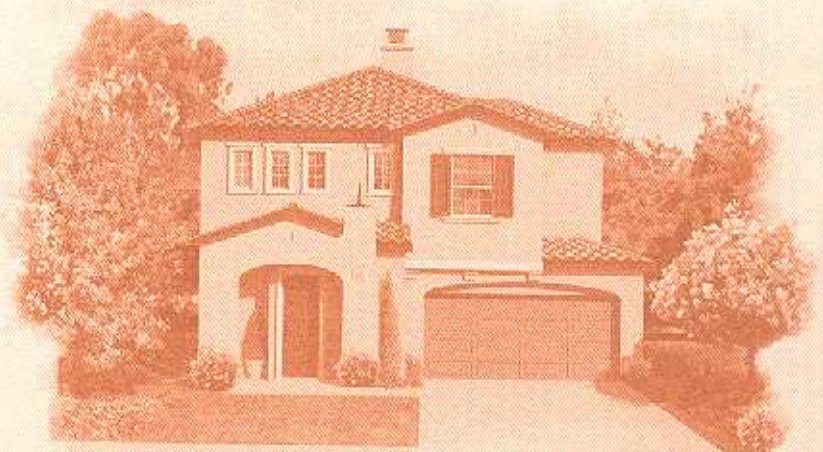
Optional loft in lieu of bedroom 4 • Optional deck at master bedroom



2AR

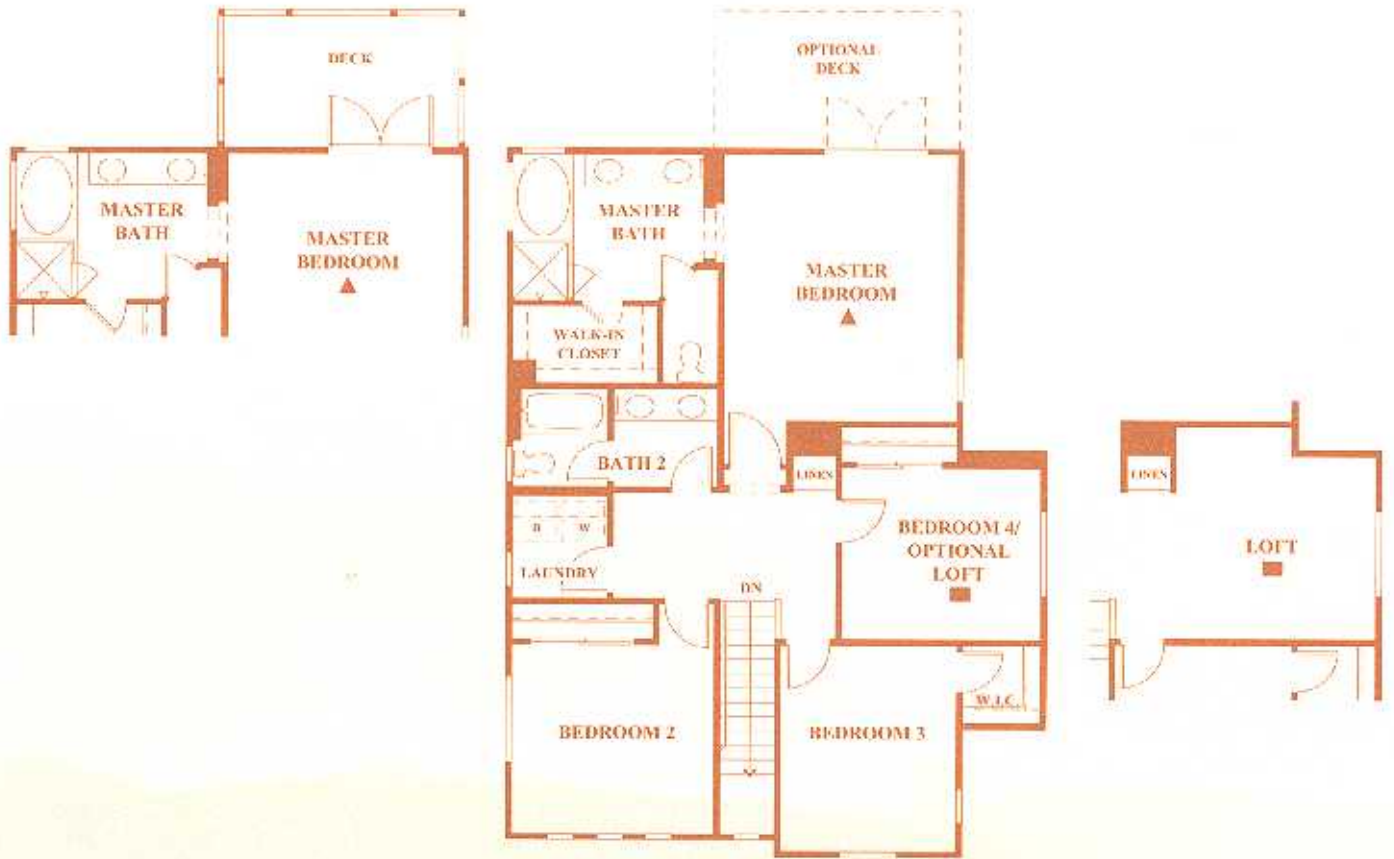


2BR

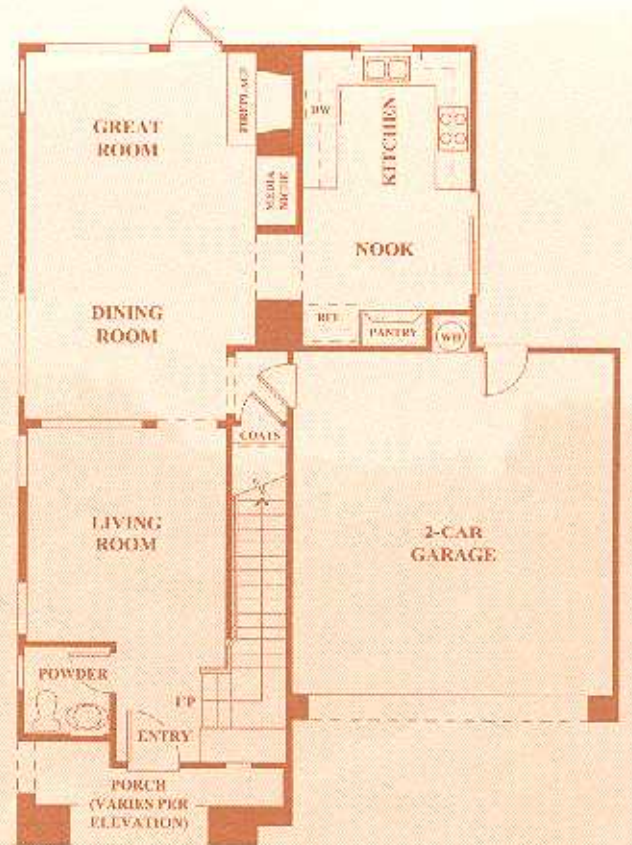


2CR (model)





SECOND FLOOR



FIRST FLOOR



## RESIDENCE THREE

Approximately 2,170 sq. ft. • 4 bedrooms • 2½ baths

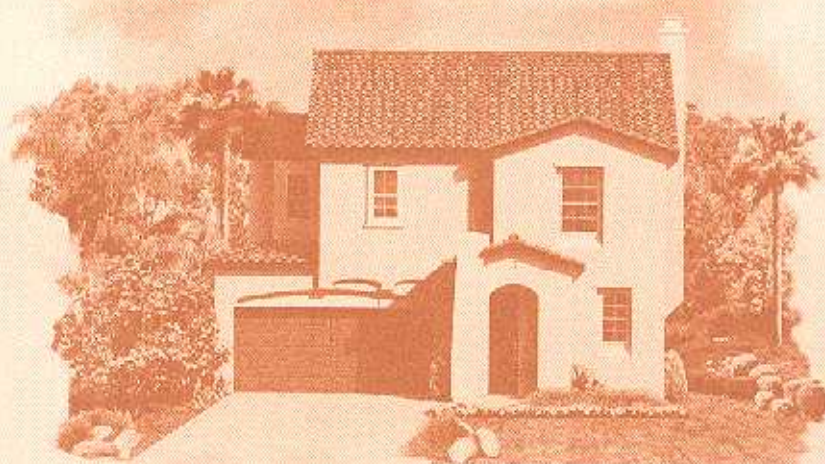
2-car garage • Optional deck at master bedroom



3A

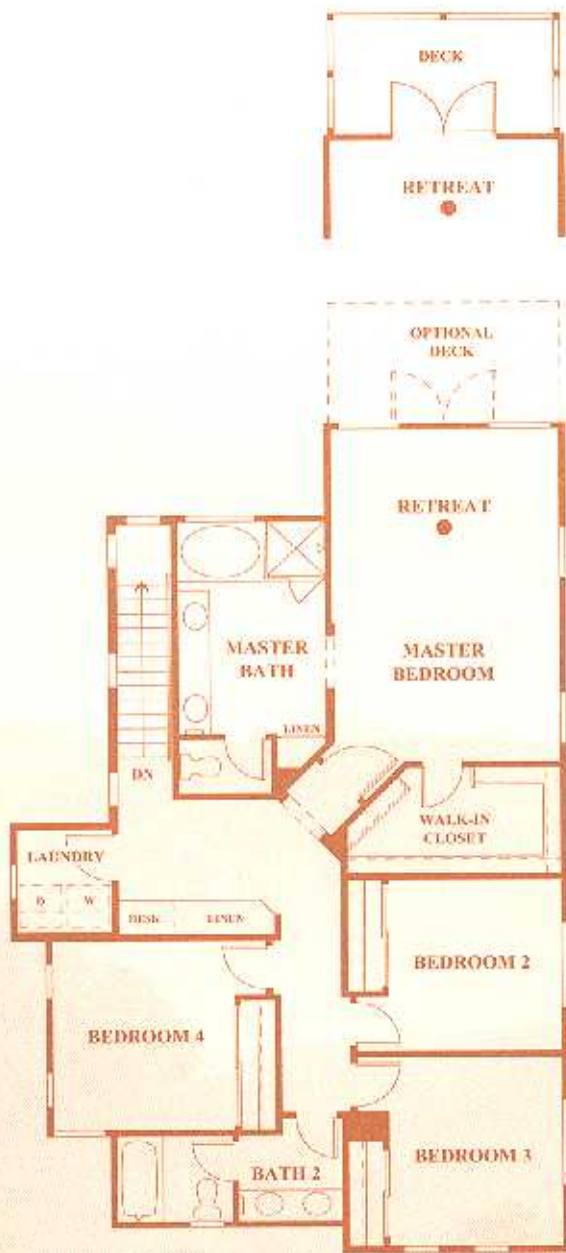


3B (model)

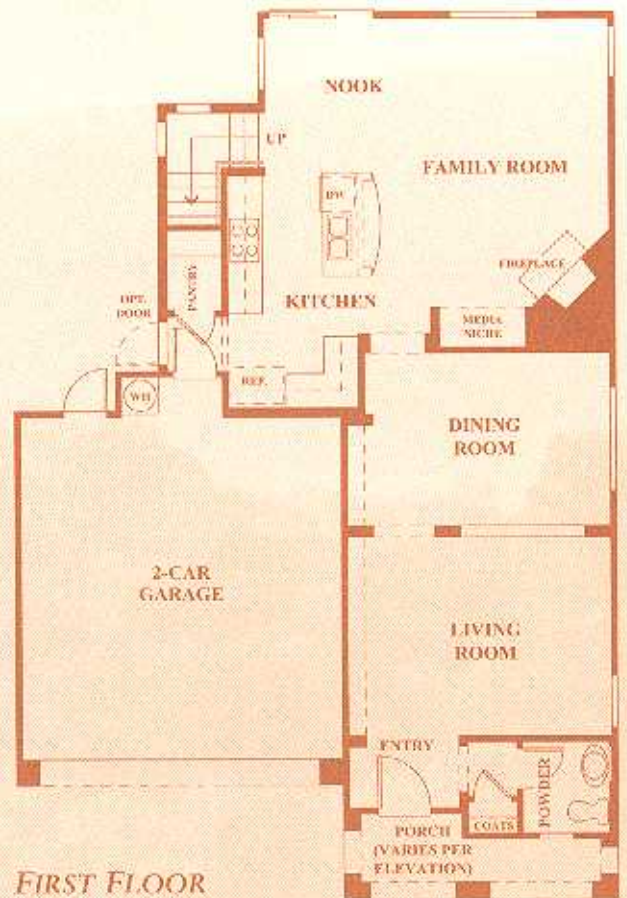


3C





SECOND FLOOR



FIRST FLOOR



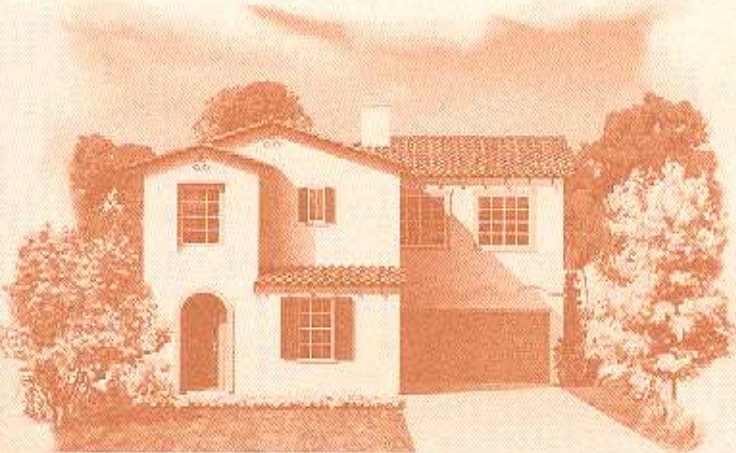
# RESIDENCE FOUR

Approximately 2,316 sq. ft. 4 bedrooms 3½ baths

2-car garage Optional fireplace at living room Optional deck at bedroom 2



4AR (model)

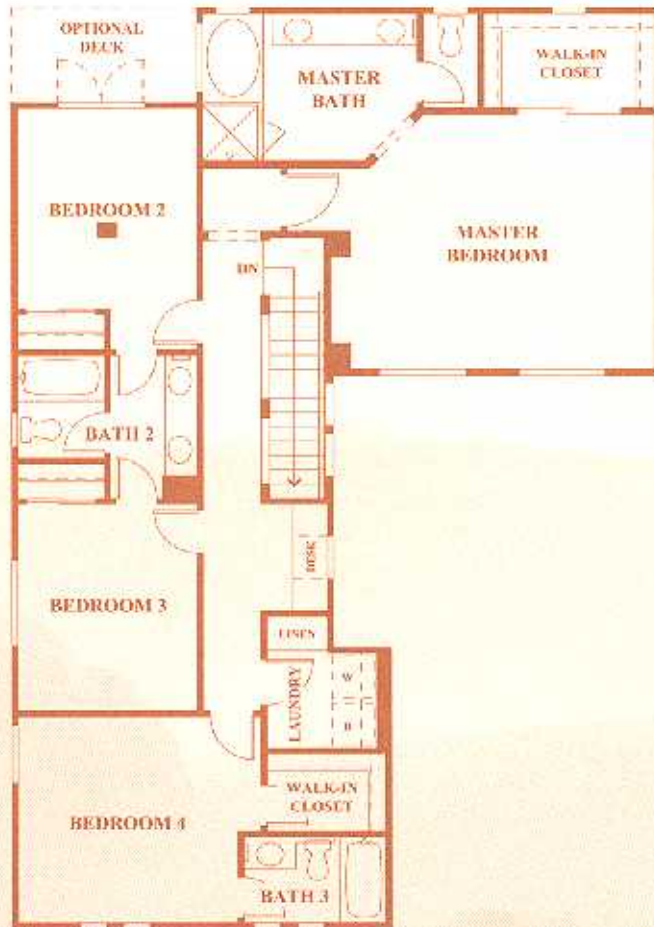


4BR

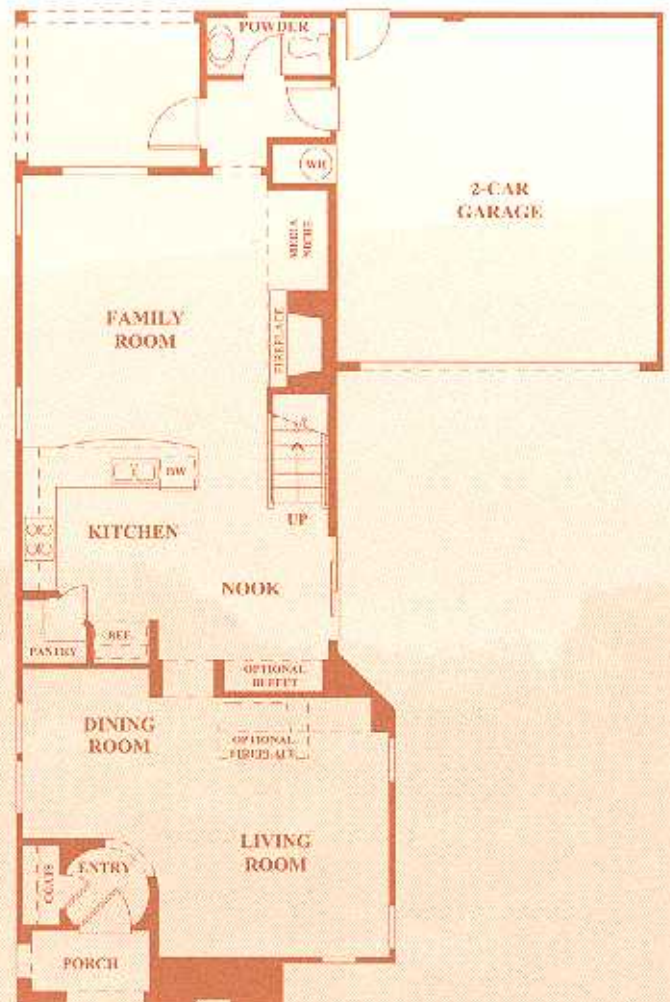


4CR





SECOND FLOOR



FIRST FLOOR



