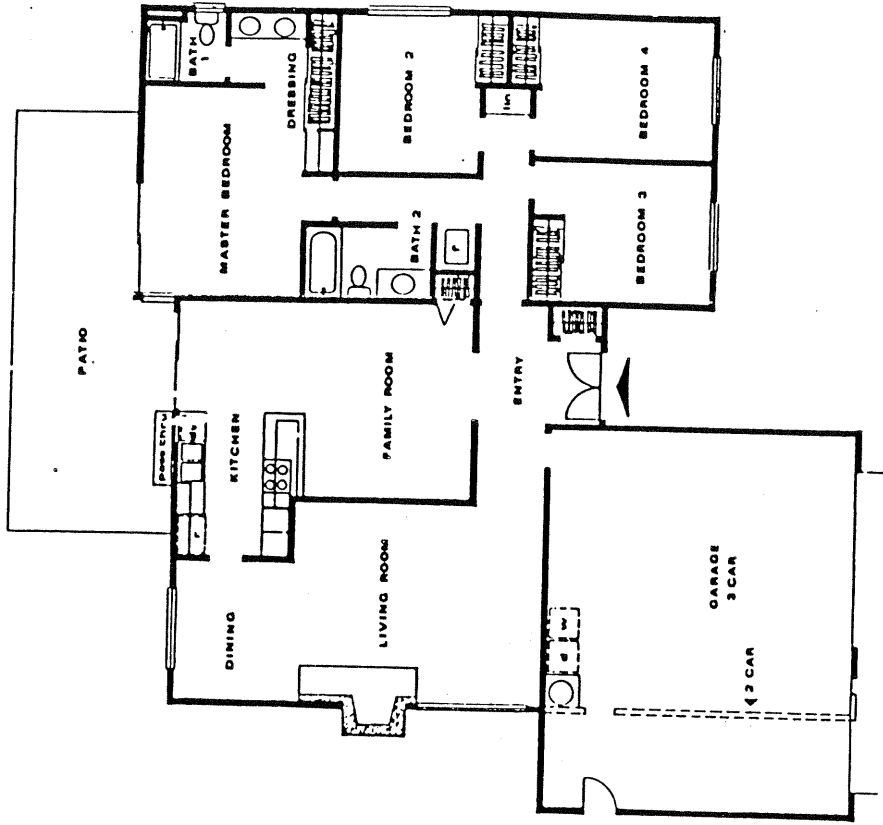
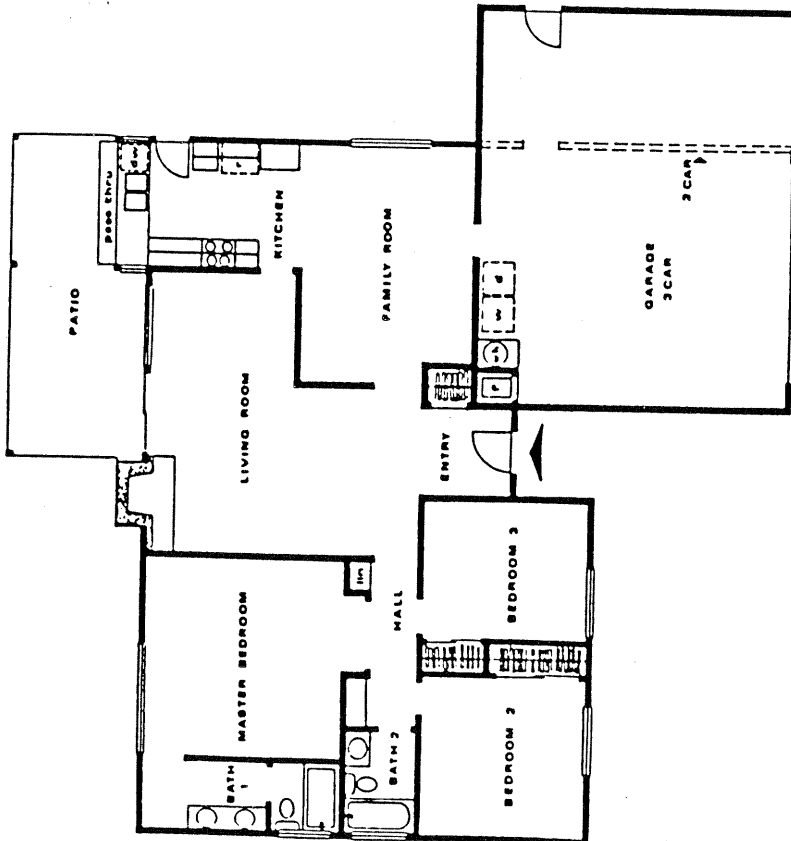


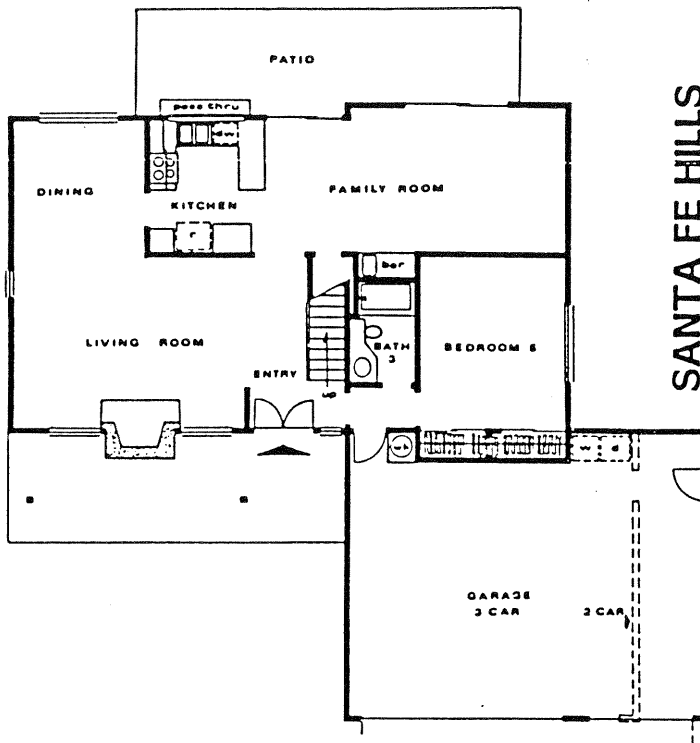
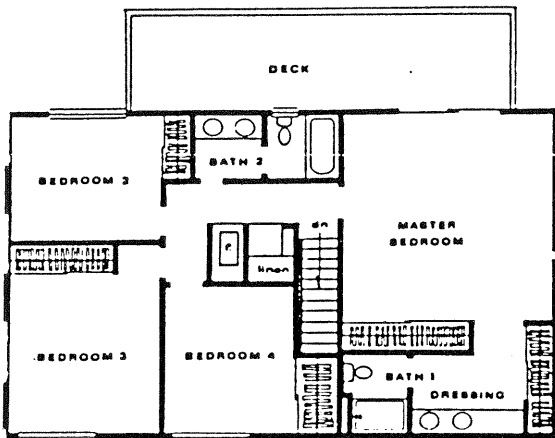
Santa Fe Hills
in Solana Beach



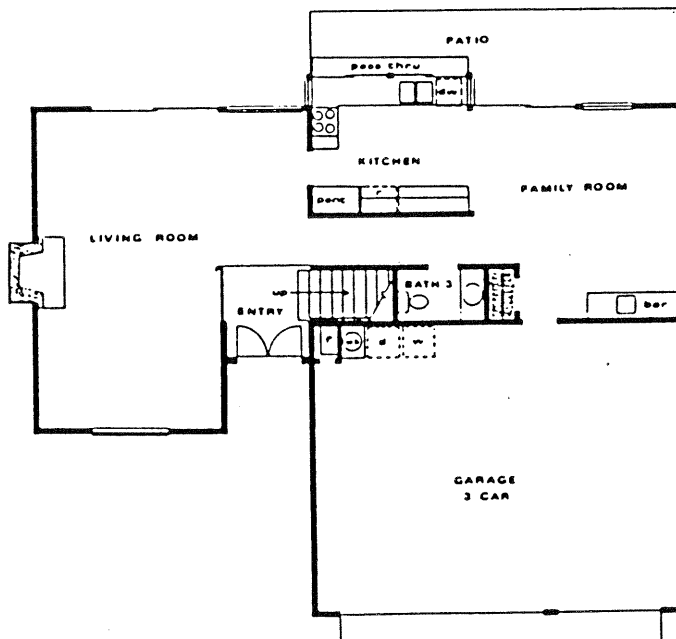
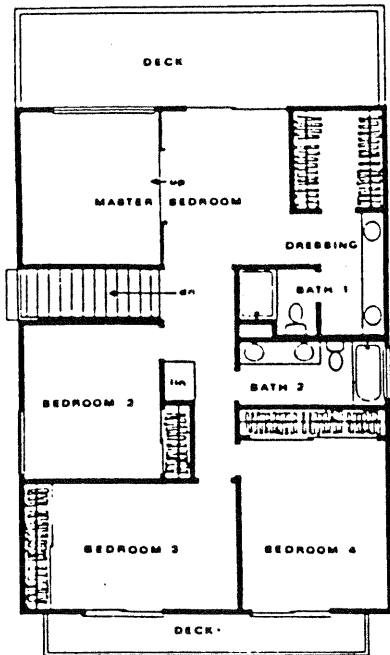
SANTA FE HILLS
Model: S2-HIDALGO
Area: 1753 B/T Code: SFH
Approximate SQ/FT: 1790



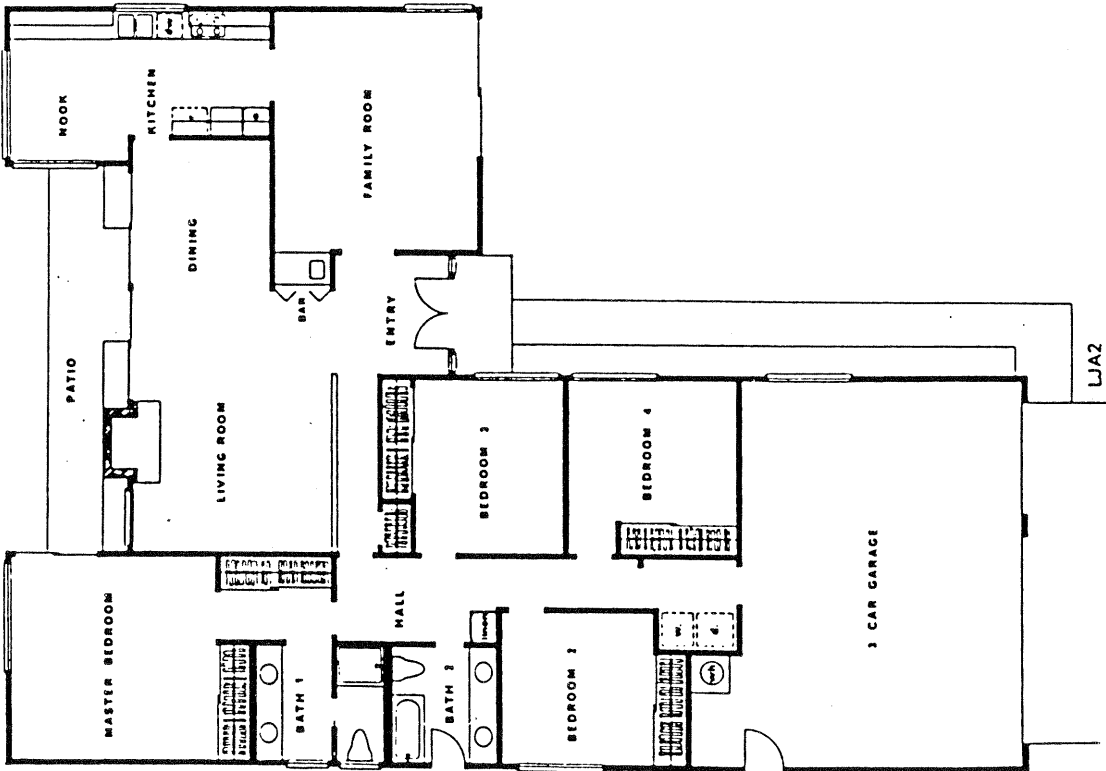
SANTA FE HILLS
Model: S1-SONORA
Area: 1753 B/T Code: SFH
Approximate SQ/FT: 1520



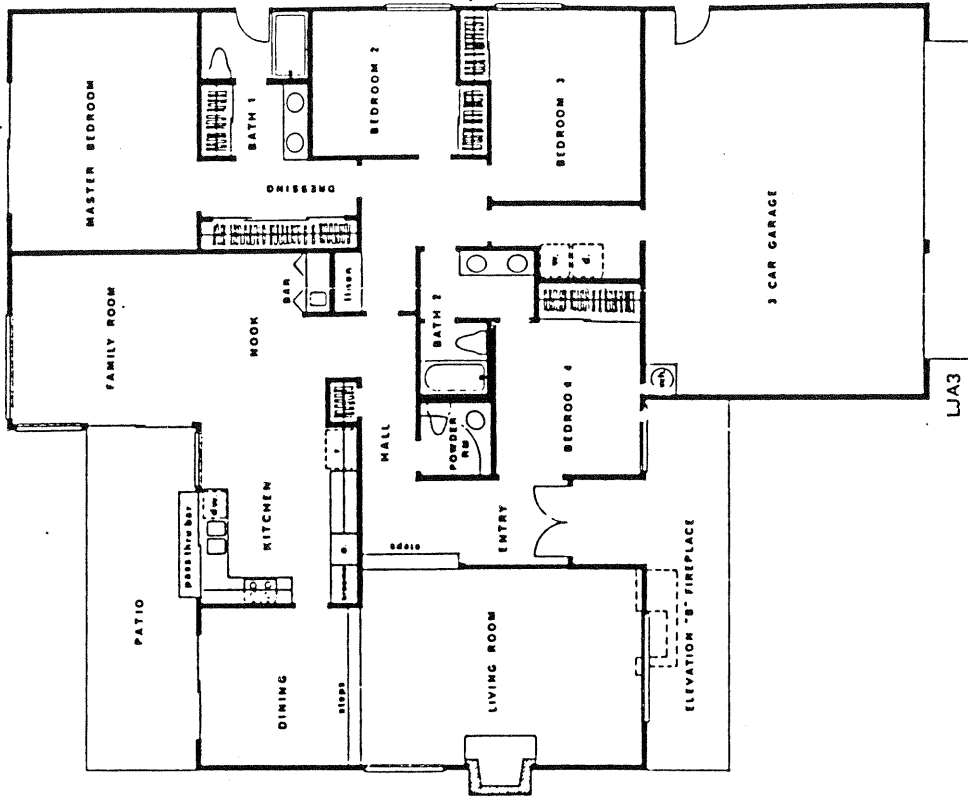
SANTA FE HILLS
 Model: S5-SAN LUIS
 Area: 1753 B/T Code: SFH
 Approximate SQ/FT: 2344



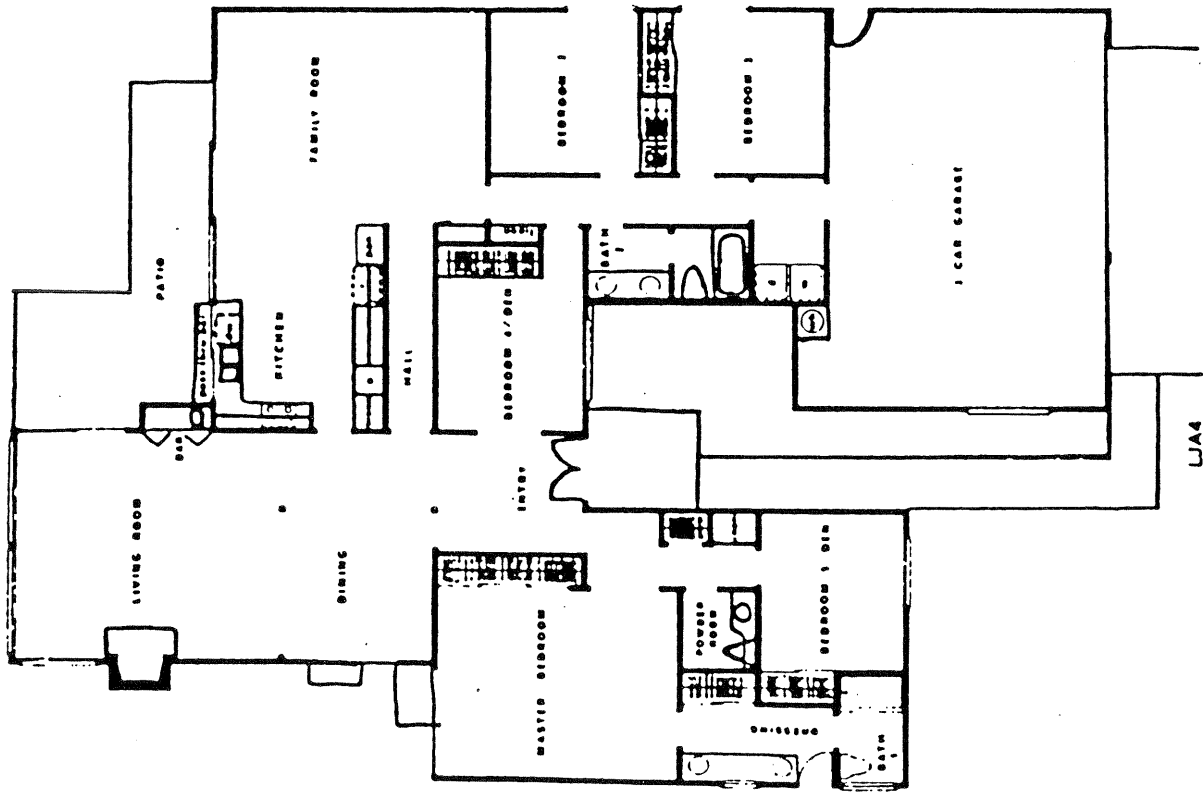
SANTA FE HILLS
 Model: S4-TAXCO
 Area: 1753 B/T Code: SFH
 Approximate SQ/FT: 2180



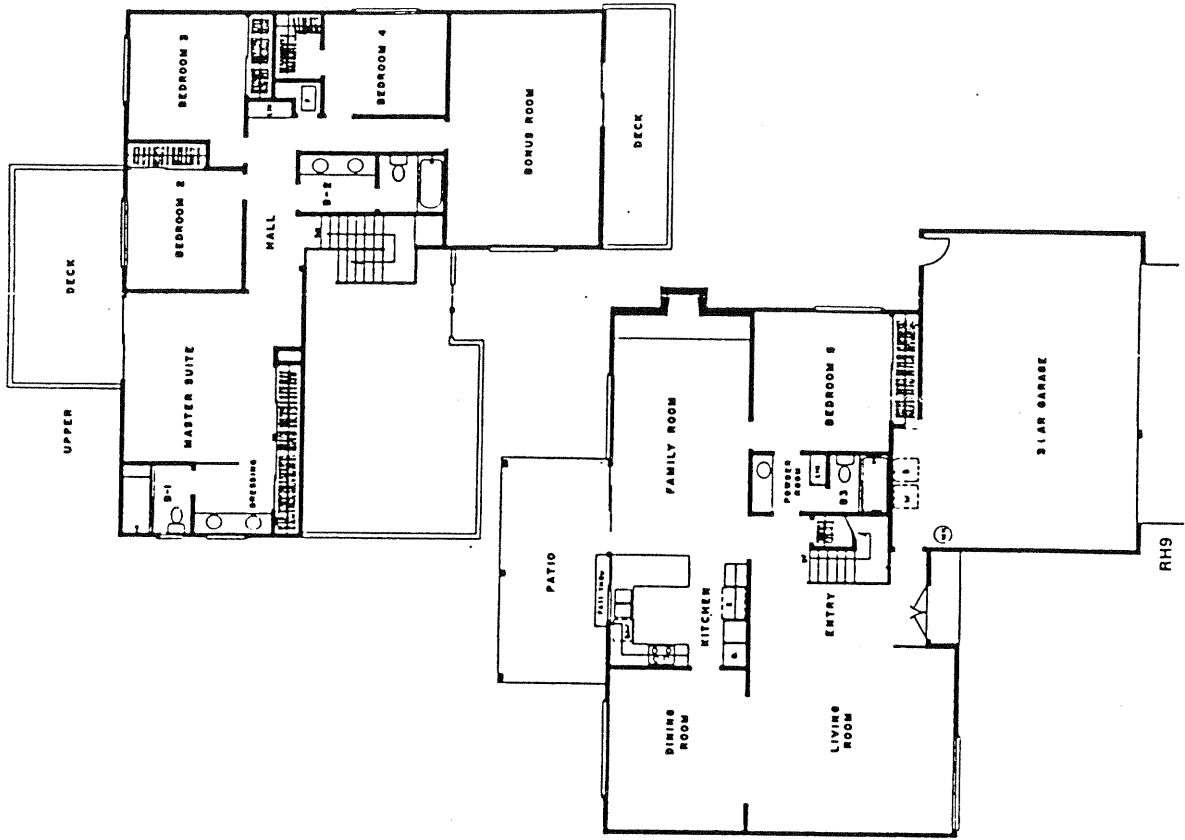
SANTA FE HILLS
 Model: LJA2-FELICIDAD
 Area: 1753 B/T Code: SFH
 Approximate SQ/FT: 2230



SANTA FE HILLS
 Model: LJA3-PRINCESA
 Area: 1753 B/T Code: SFH
 Approximate SQ/FT: 2400



SANTA FE HILLS
 Model: LJA4-IMPERIA
 Area: 1753 B/T Code: SFH
 Approximate SQ/FT: 2650



SANTA FE HILLS
 Model: RH9-EMPERATRIZ
 Area: 1753 B/T Code: SFH
 Approximate SQ/FT: 3050

IN THE HIGHLARDS

S-1	SONORA	1520 sq. ft.	3 BR, 2 baths
S-2	HIDALGO	1790 sq. ft.	4 BR, 2 baths
S-4	TAXCO	2160 sq. ft.	4 BR, 2½ baths
S-5	SAN LUIS	2344 sq. ft.	5 BR, 3 baths
LJA 2	FELICIDAD	2230 sq. ft.	4 BR, 2 baths
LJA 3	PRINCESA	2400 sq. ft.	4 BR, 2½ baths
RH 9	EMPERATRIZ	3050 sq. ft.	5 BR, 3 baths (plus bonus room)

ON THE GOLF COURSE

LJA 2	FELICIDAD	2230 sq. ft.	4 BR, 2 baths
LJA 3	PRINCESA	2400 sq. ft.	4 BR, 2½ baths
LJA 4	IMPERIA	2650 sq. ft.	5 BR, 2½ baths
RH 9	EMPERATRIZ	3050 sq. ft.	5 BR, 3 baths (plus bonus room)

SANTA FE HILLS

Site Plan - B/T: SFH

Caution: There may be additions or changes to these site plans