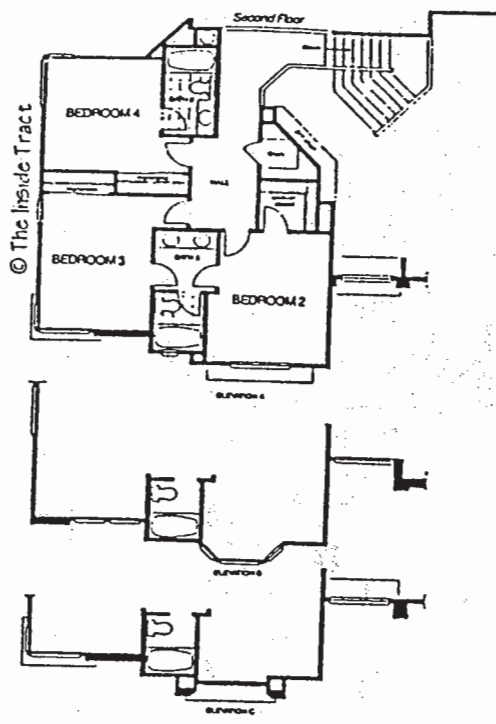
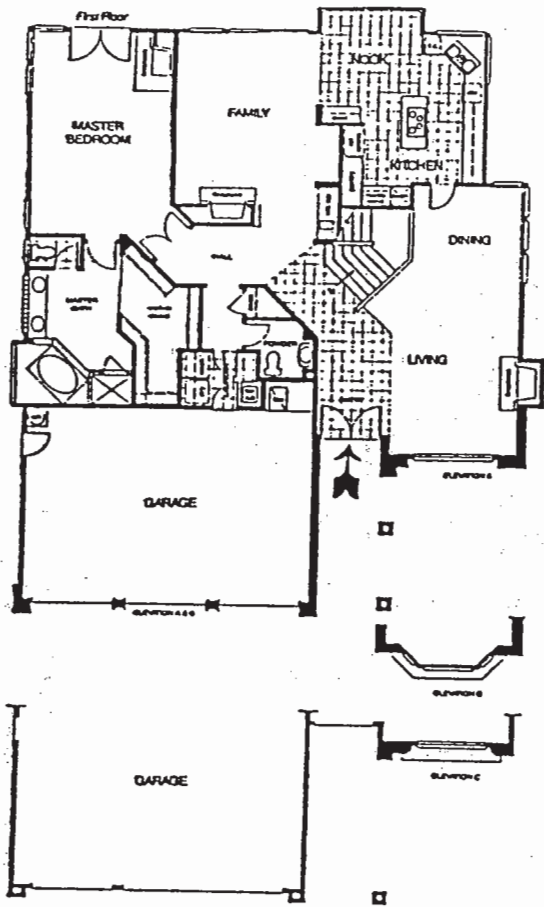
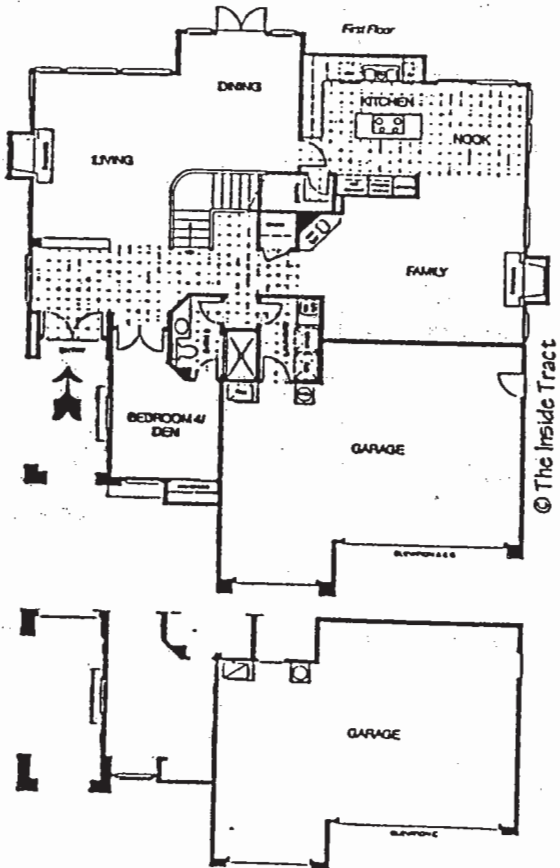


# Santa Fe Summit

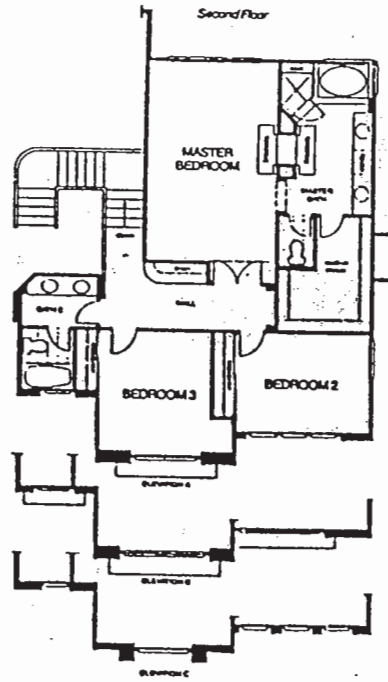


© The Inside Tract

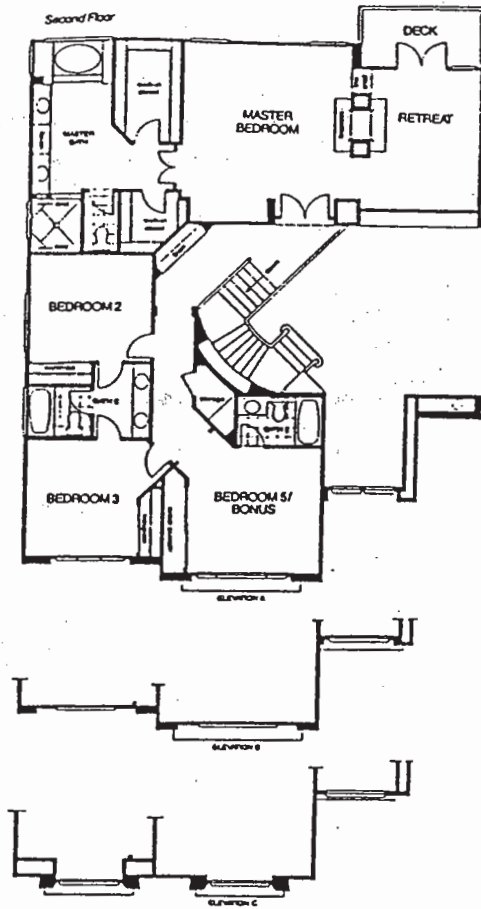
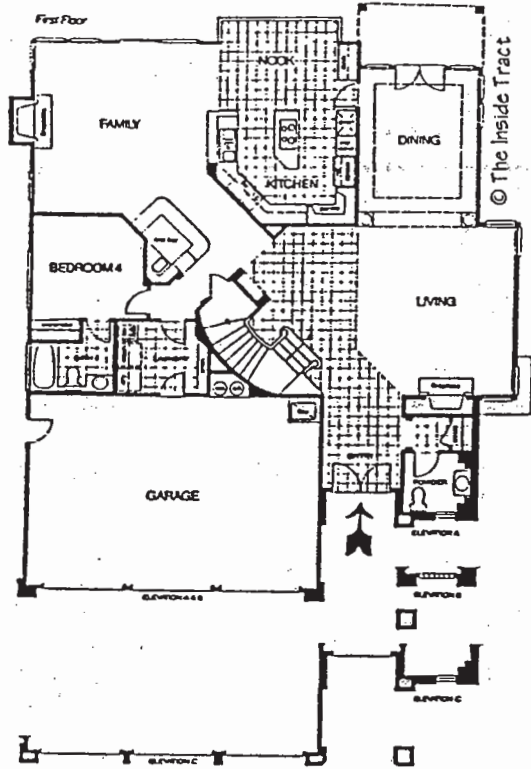
**SANTA FE SUMMIT**  
 Model: PLAN 2  
 Area: EDM B/T Code: SFS  
 Approx SQ/FT: 2881  
 ©The Inside Tract



© The Inside Tract



**SANTA FE SUMMIT**  
 Model: PLAN 1  
 Area: EDM B/T Code: SFS  
 Approx SQ/FT: 2800  
 ©The Inside Tract



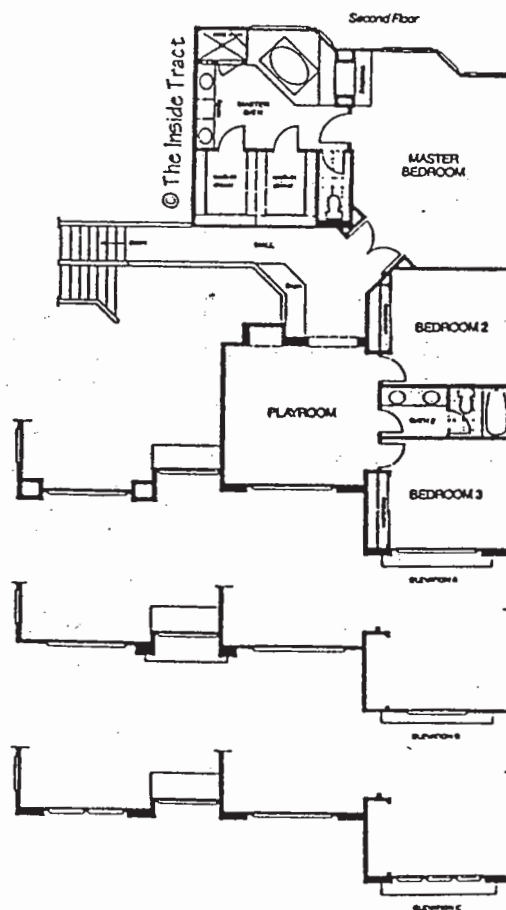
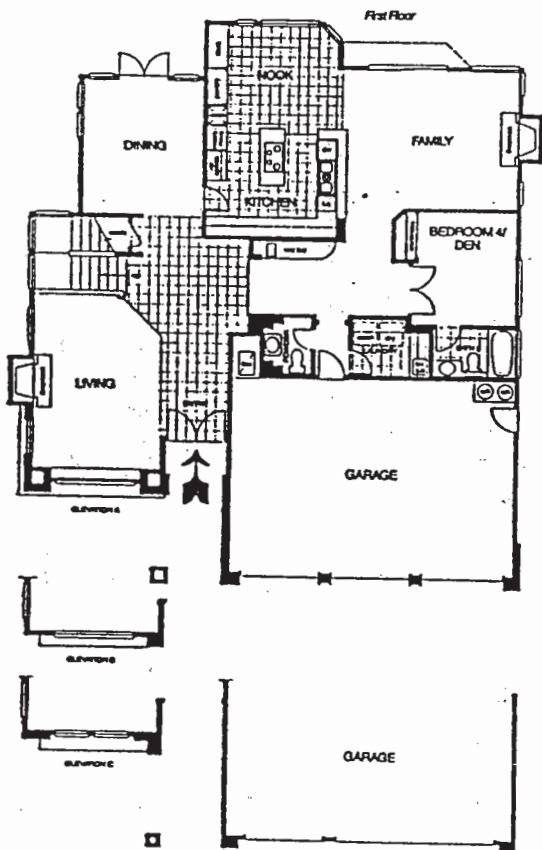
**SANTA FE SUMMIT**

Model: PLAN 4

Area: EDM B/T Code: SFS

Approx SQ/FT: 3732

©The Inside Tract



**SANTA FE SUMMIT**

Model: PLAN 3

Area: EDM B/T Code: SFS

Approx SQ/FT: 3295

©The Inside Tract

# Features

Information Deemed Accurate  
But Not Guaranteed

## THE STREET SCENE

- Classic porticos at entrance
- Carved oak entry doors
- Decorative Schlage brass door hardware
- Elegant wood windows at front elevations
- Traditional architecture

## UPON ENTERING

- Formal entry with ceramic or wood plank flooring
- Plush carpeting in choice of designer colors. See floor plans for specific areas
- Wood burning fireplace with gas log-lighter valve and glass doors featuring marble face and hearth in living room and ceramic tile face and hearth in family room
- Custom hand troweled ceiling treatments and custom radius wall corners
- Dramatic volume ceilings
- Distinctive, elegant lighting fixtures and architecturally specified recessed lighting
- Decorative Schlage interior door hardware
- French doors or sliding tempered glass doors (per plan) to private outside areas
- Raised panel interior passage doors
- Elegant custom detailed oak staircase

## ENTER THE GOURMET KITCHEN

- Countertops with translucent glazed tile in choice of three colors
- Custom oak cabinets with choice of four stain colors
- Cast iron sink with imported European faucet
- Dramatic canopy windows
- General Electric monogram appliances (including built-in refrigerator) with wood panels to match kitchen cabinet stain selection for refrigerator, dishwasher, and trash compactor
- Island cooking with cooktop and dramatic ceiling mounted vent hood
- Spacious storage pantry
- Recessed ceiling lighting and under cabinet task lighting
- Choice of vinyl, ceramic tile or wood plank flooring

## RETREATING TO THE MASTER SUITE

- Spacious master bedroom suites designed to include private sitting and dressing areas, and walk-in closets
- Wood-burning fireplace with gas log-lighter valve and glass doors, featuring marble face and hearth per plan
- Plan 4 has separate retreat with fireplace and private balcony

## INTO THE MASTER BATH

- Lustrous ceramic tile with choice of three colors
- Decorative plumbing hardware
- Separate vanity areas in some plans
- Custom oak cabinets with stain color to match kitchen selection
- Fireplace with tile face in plans 1 & 3
- Oval whirlpool tub
- Shower with ceramic tile surrounds and clear glass safety enclosure. Some with glass block detailing. Plan 4 features walk-in shower

## SECONDARY BEDROOM AND BATH FEATURES

- Abundant wardrobe or walk-in closets
- Mirrored wardrobe doors
- Hand-set ceramic tile vanity tops to match master bath selection
- Tub/shower with tile surrounds, decorator selected hardware, and custom oak cabinets

## INTERIOR NOTEWORTHIES

- Powder room has traditional pedestal lavatory; Plan 1 has full-length counter
- Interior laundry areas with Corian countertops
- Oak linen cabinetry
- Electronic thermostat for controlled forced-air heating
- Prepped for air-conditioning
- Pre-wired for television, cable TV, telephones, and intercom system
- Smoke detectors with warning buzzers
- Built-in wet bar with Corian countertop. Plan 4 wet bar includes built-in refrigerator
- 220-v. and gas service for clothes dryer

## ENERGY SAVING FEATURES

- Full insulation of exterior walls and ceilings
- Weatherstripping on exterior doors
- High efficiency hot water heaters with hot water saver device

- Set back thermostats

- Glass fireplace doors

## EXTERIOR DETAILING

- Architecturally specified exterior color palette
- Blended fireproof concrete roof tiles
- Wood sectional roll-up garage door and garage door opener with two controls
- Concrete walks and driveways
- Weatherproof exterior electrical outlets
- Barbecue gas outlet
- All homes have 3-car garages
- Side and rear yard fencing

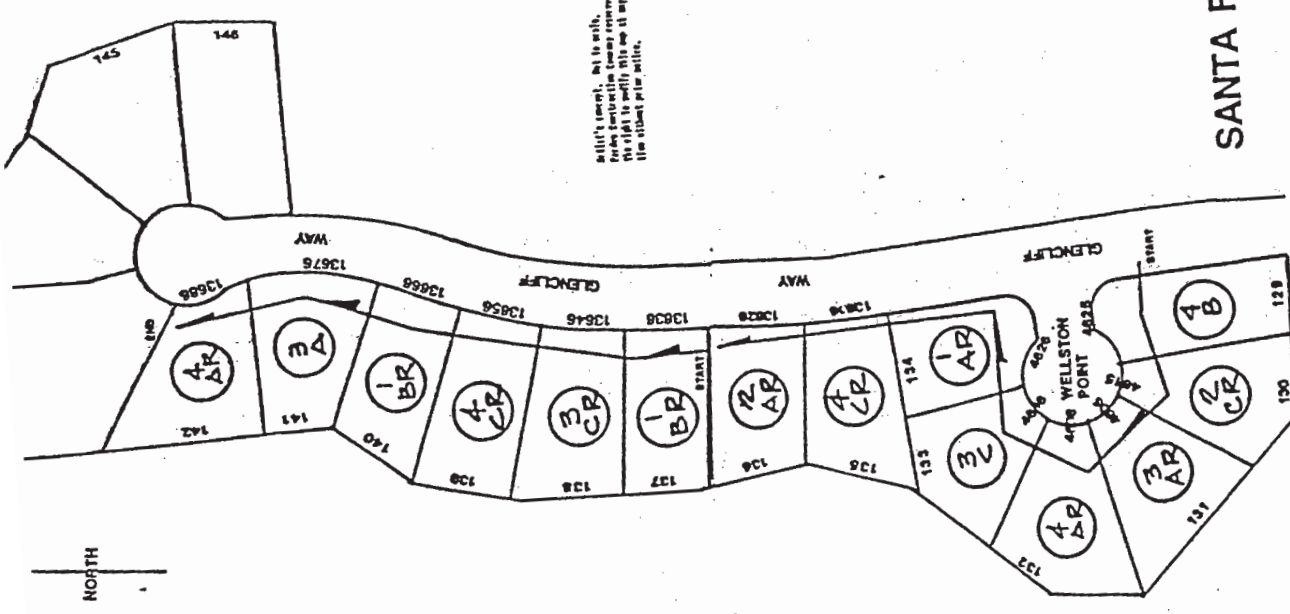
*NOTE: Selection of stain color for kitchen cabinets will determine cabinet stain throughout house  
Selection of tile color for the master bath countertop will determine countertops of all baths throughout house*

## OPTIONS (Available at additional cost)

- Upgrade carpet and pad
- Upgrade hard surface flooring
- Air conditioning
- Granite or Corian countertop for kitchens and wet bar
- Security system
- Tub enclosures for secondary baths with choice of clear or obscure glass
- Intercom system
- Central vacuum system
- Bose music/entertainment system

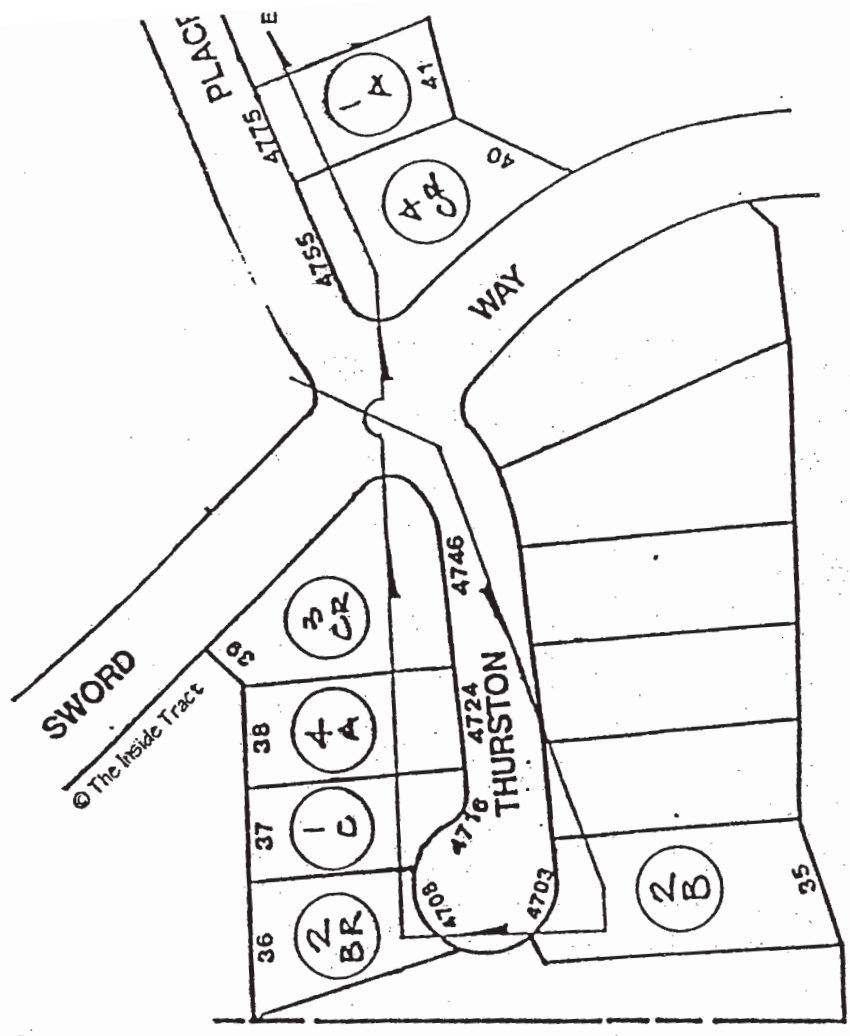
SANTA FE SUMMIT





Builder's caveat. As to each lot, the owner shall be responsible for any construction. The right to sell the lot is not affected by this caveat.

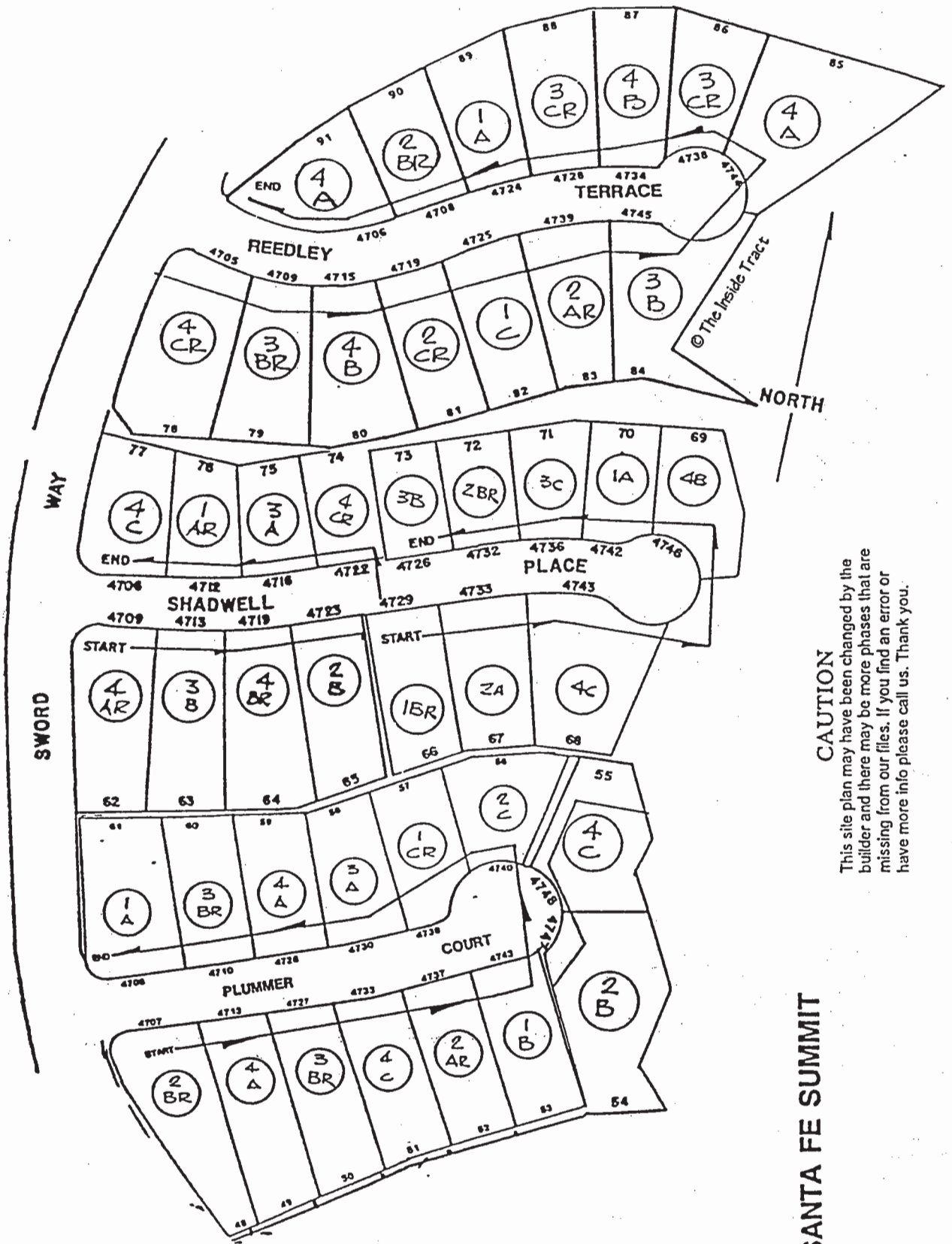
# SANTA FE SUMMIT



# CAUTION

This site plan may have been changed by the builder and there may be more phases that are missing from our files. If you find an error or have more info please call us. Thank you.





**CAUTION**  
 This site plan may have been changed by the builder and there may be more phases that are missing from our files. If you find an error or have more info please call us. Thank you.

**SANTA FE SUMMIT**