

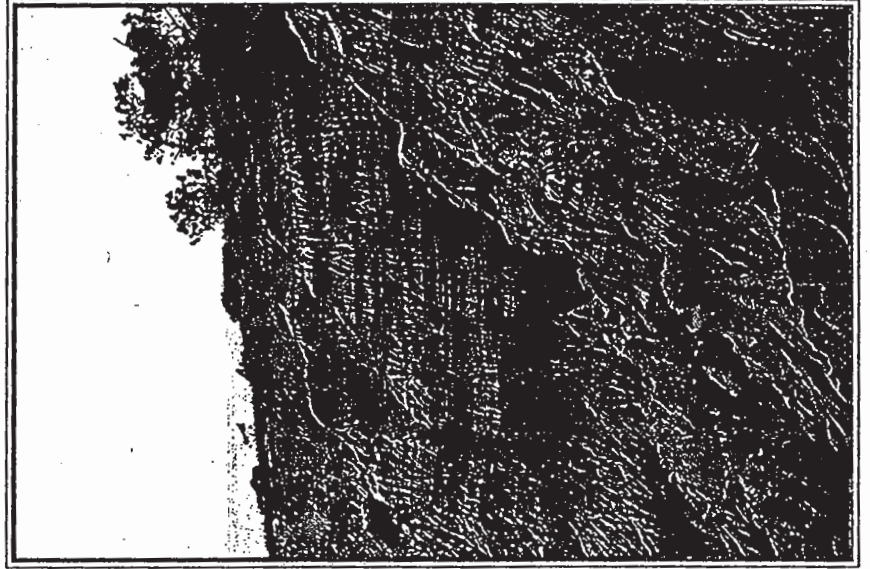
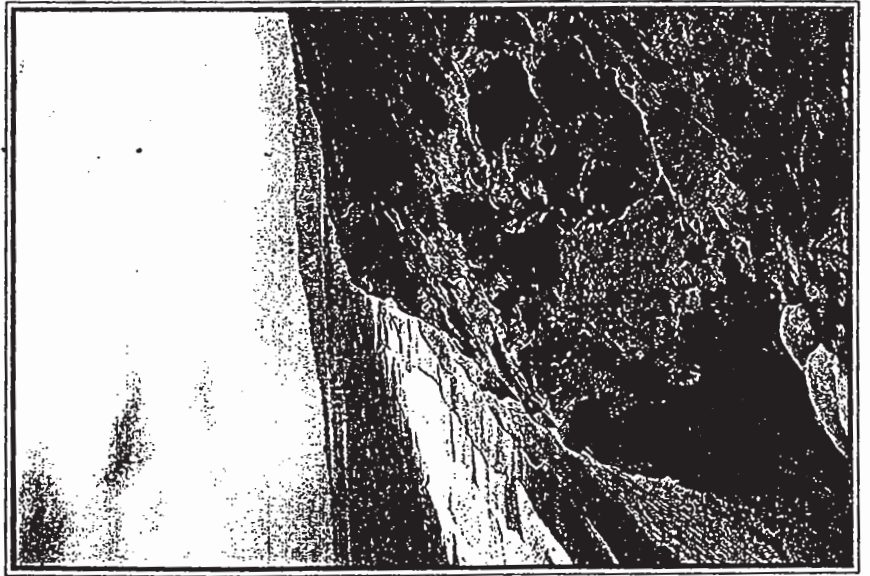
# Sausalito

at Torrey Hills



# Community Story

*Just as there is beauty in art, there is beauty in life. The colors. The sounds. The spirit. And you have always been one to enjoy the splendor life has to offer. Welcome to Sausalito at Torrey Hills from Western Pacific Housing. We represent a community of artfully designed homes that capture your artistic inspiration with three innovative floorplans, an impressive palette of amenities, and the meticulous attention to details which has made Western Pacific Housing so renowned. We are Sausalito's pristine location amid the majestic rolling hills of the Torrey Hills masterplan places you within the beauty of Los Peñasquitos Canyon, Torrey Pines State Park, Carmel Mountain, and the beaches of Del Mar. Put all these elements together, and you will truly discover how it feels to be awe-inspired. We are Sausalito at Torrey Hills. Let us take your breath away.*



# Plan 1 SANTA CRUZ

From approx. 1,579 to  
1,731 sq. ft.

3 Bedrooms

Loft

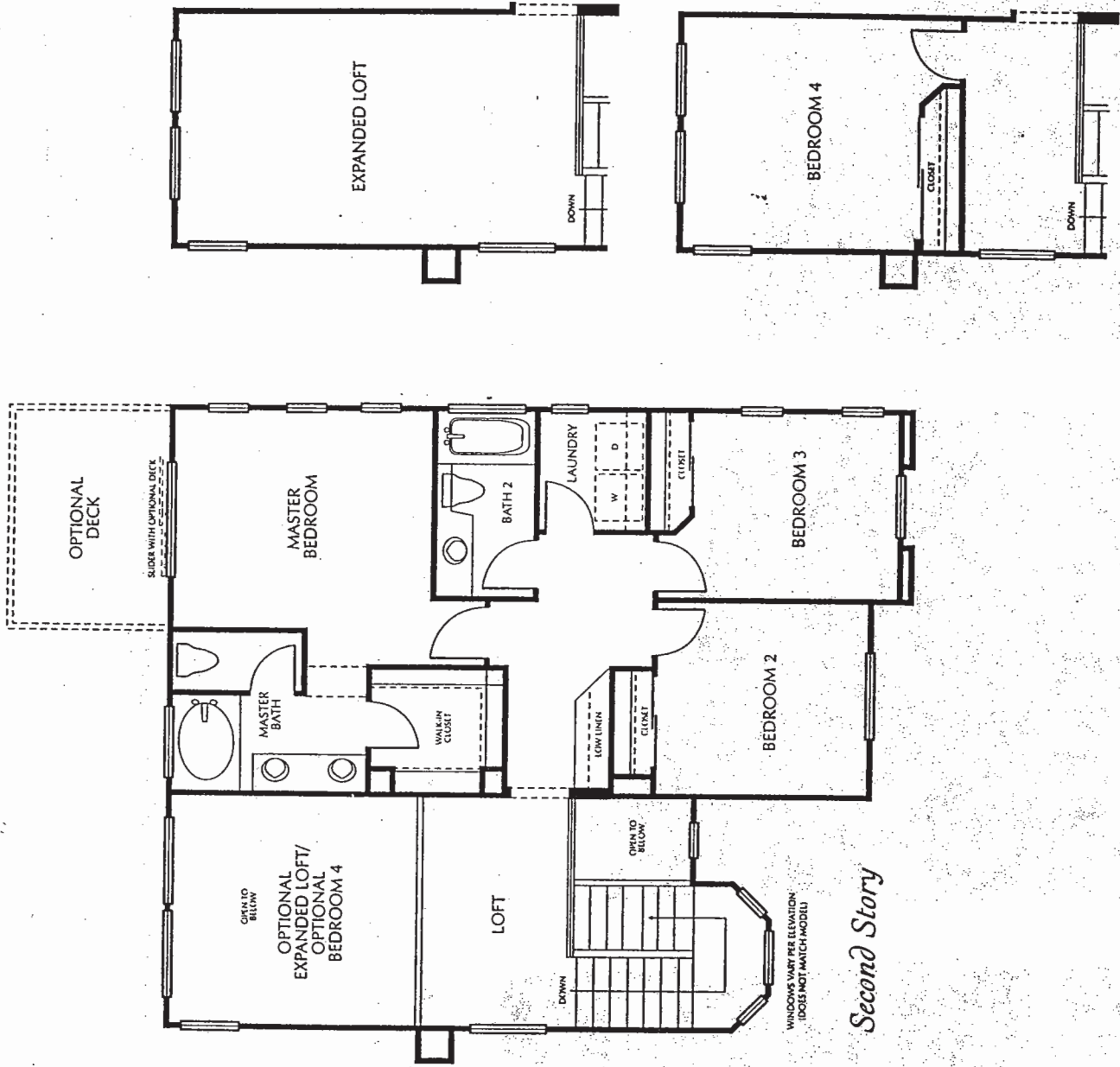
2.5 Baths

2-car garage

Optional bedroom 4

Optional expanded loft

Optional deck



# Plan 2 MONTEREY

From approx. 1,686 to  
1,936 sq. ft.

3 Bedrooms

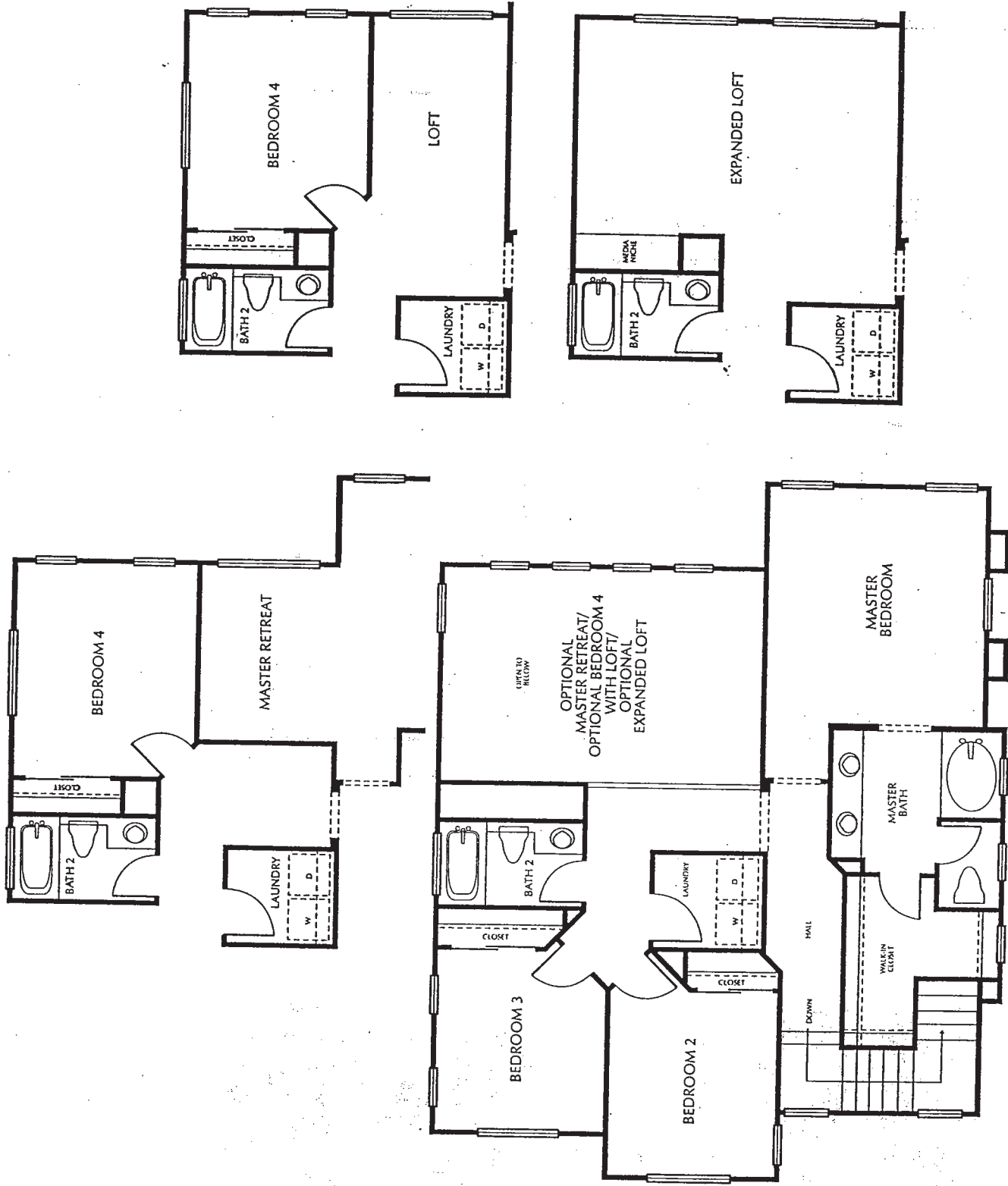
2.5 Baths

2-car garage

Optional bedroom 4 with loft

Optional expanded loft

Optional master retreat



Second Story

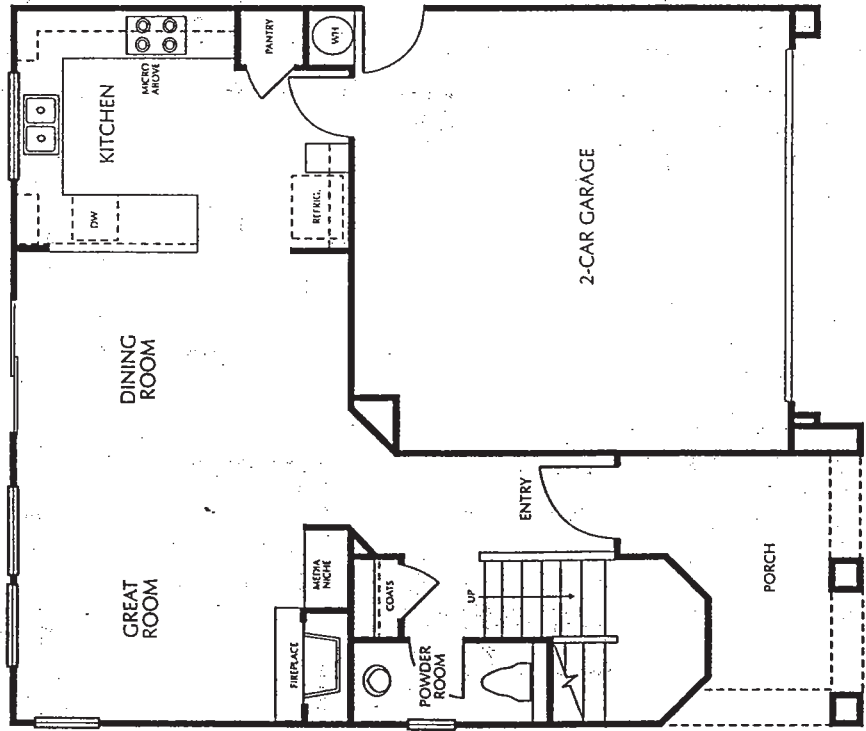




*Residence 1a*



*Residence 1b*



FRONT VARIES PER ELEVATION

*First Story*

# Plan 3 CARMEL

From approx. 2,011 to  
2,135 sq. ft.

3 Bedrooms

Loft

2.5 Baths

2-car garage

Optional bedroom 4

Optional bedroom 5

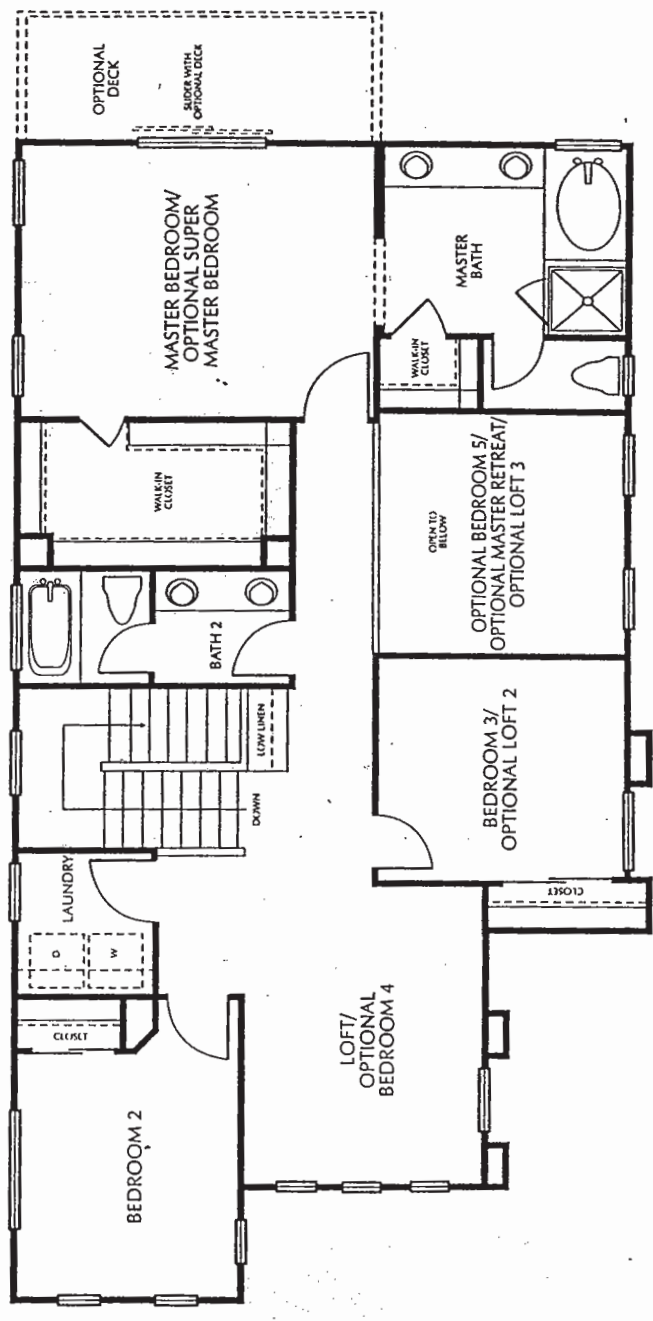
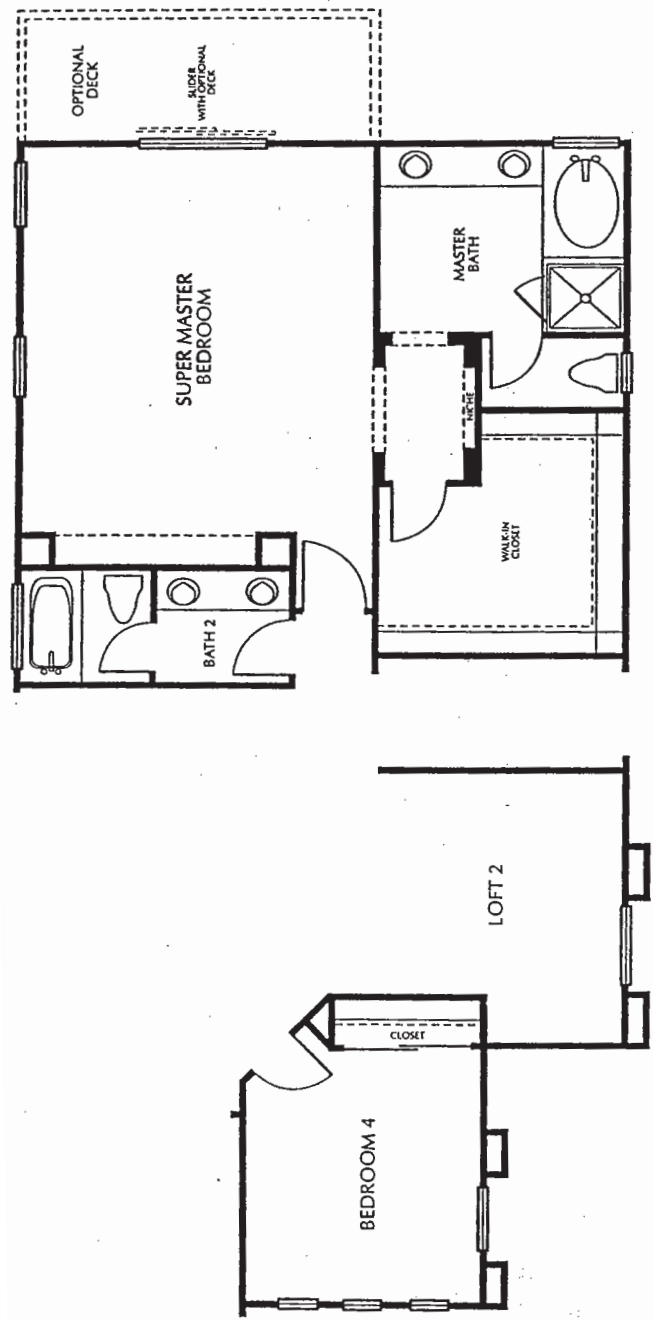
Optional  
master retreat

Optional loft 2

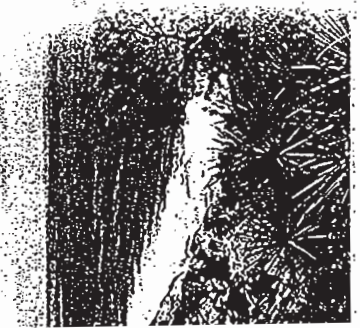
Optional loft 3

Optional super master bedroom

Optional deck

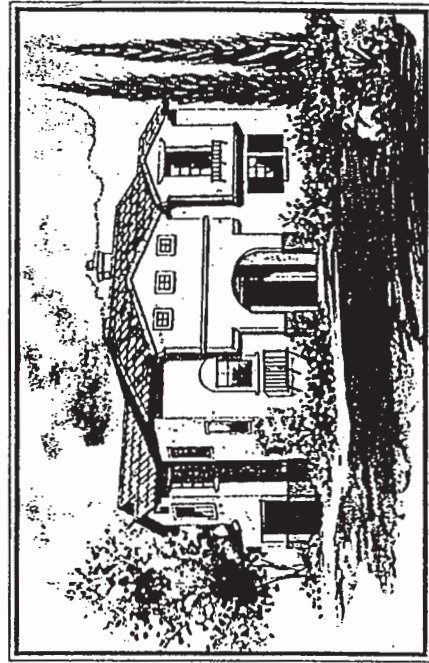


Second Story

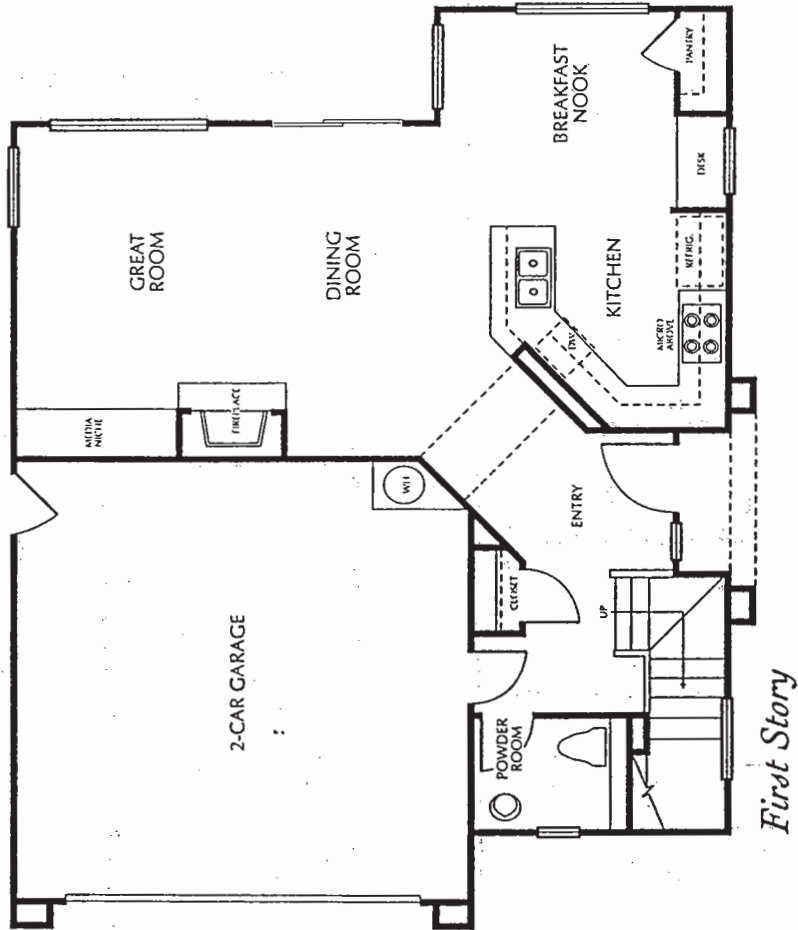




Residence 2a



Residence 2b



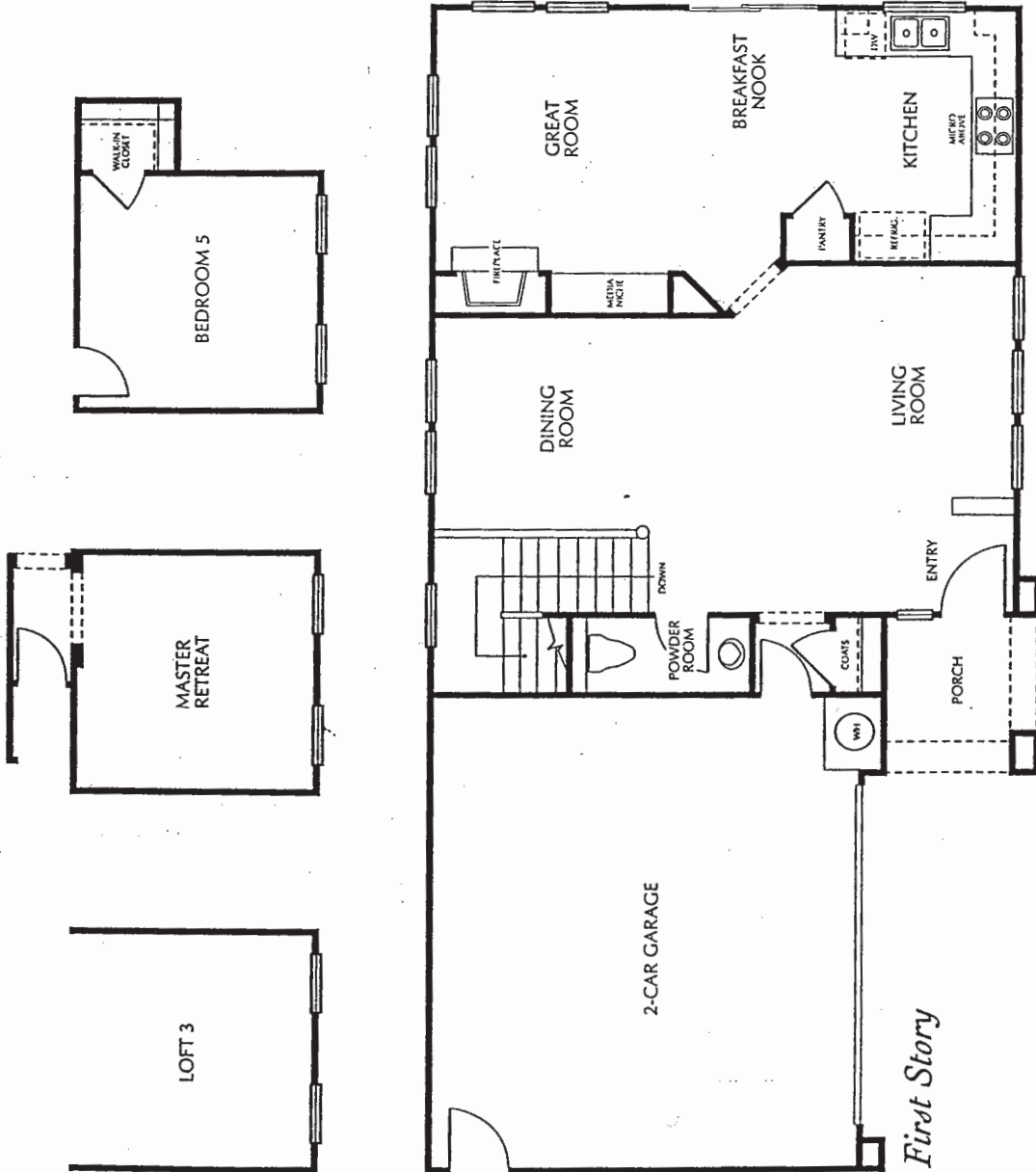




Residence 3a



Residence 3b



First Story

# Features

## Distinctive Exteriors

- *Handsome Mediterranean architecture*
- *Long-lasting, fire-resistant, concrete tile roofs*
- *Custom exterior color schemes*
- *Attached two-car garage*
- *Sectional roll-up garage door with two transmitters*
- *Dramatic, eight-foot entry door*
- *Professionally landscaped and maintained front yards and common areas*
- *Rear yard with privacy fencing*
- *Concrete driveway and walkways*

## Impressive Interiors

- *Elegant ceramic tile entry*
- *Raised-panel interior doors*
- *Contemporary recessed lighting*
- *Wood-burning fireplace and ceramic tile surround*
- *Custom radius wall corners*
- *Thoughtfully designed media niche*
- *Conveniently located interior laundry room with upper cabinets*
- *Elegant powder room with pedestal sink*
- *Hand-crafted, lower-ball linen cabinets (Residences 1 and 3)*

## Spacious Master Suites

- *Easy-care, cultured marble countertops with Moen® faucets*
- *Hand-crafted painted cabinets*
- *Elongated oval soaking tub*
- *Separate tub and shower (Residence 3)*
- *Clear shower enclosure (Residence 3)*
- *Oversized walk-in closets*

## Gourmet Kitchens

- *Hand-set ceramic tile countertops*
- *Hand-crafted oak cabinets*
- *Designer General Electric® appliances including:*

*Four-burner gas cooktop*

*Built-in self-cleaning oven*

*Built-in microwave oven/hood*

*Multi-cycle dishwasher*

• *Disposal*

• *Refrigerator area plumbed for icemaker*

• *Dual-compartment sinks with Moen® pull-out faucet*

• *Contemporary recessed lighting*

• *Under-cabinet fluorescent task lighting*

## Quality Construction Features

- *Efficient dual-glazed windows*
- *50-gallon water heater*
- *Smoke detectors*
- *Water-saving plumbing fixtures*
- *Fully-insulated exterior walls and attic*
- *125-amp electric panel*
- *Gas, forced-air heating with energy-efficient setback thermostat*
- *Prepared for optional air conditioning*
- *Soft-touch electrical switches*

## Options

*Please see your sales representative for a full list of upgrades and options.*

## Design Studio

*To customize your new home, we are proud to offer a wide variety of options and upgrades at our Design Studio. From distinctive floor and window coverings to custom cabinetry, our design team is available to help you select your own personal expressions for your new home.*

In an effort to improve our product to meet consumer needs, Western Pacific Housing reserves the right to modify features, specifications, plans, and pricing without notice and/or obligation. All square footage is approximate. Not all features are available in all plans. Entry, ceiling, window, and wall configurations vary per plan and elevation. All renderings are artist's illustrations. See Sales Representatives for details. ©2000 Western Pacific Housing, Inc.



# Builder Story

*Being the homebuilder you want us to be isn't easy. It takes hard work, dedication, and experience. But none of these things alone makes a builder great. It is caring. Caring about you, your future, your total satisfaction as a Western Pacific Housing homeowner. Everything we do, from testing faucets to location scouting, is because we care.*

*It is knowledge. Our principals come together with countless years of experience, forming a hub of homebuilding excellence that now stretches the width and breadth of California.*

*It is strength. We believe that if you stop pushing yourself to be better, you stop growing. We have earned a reputation throughout California for quality and unbeatable value for everyone from first-time buyers to luxury homeseekers — but we'll never rest on those accomplishments alone.*

*It is teamwork. At Western Pacific, we don't just work for you, we work with you.*

*You tell us what you want, and we really hear you. Our commitment to you is the*

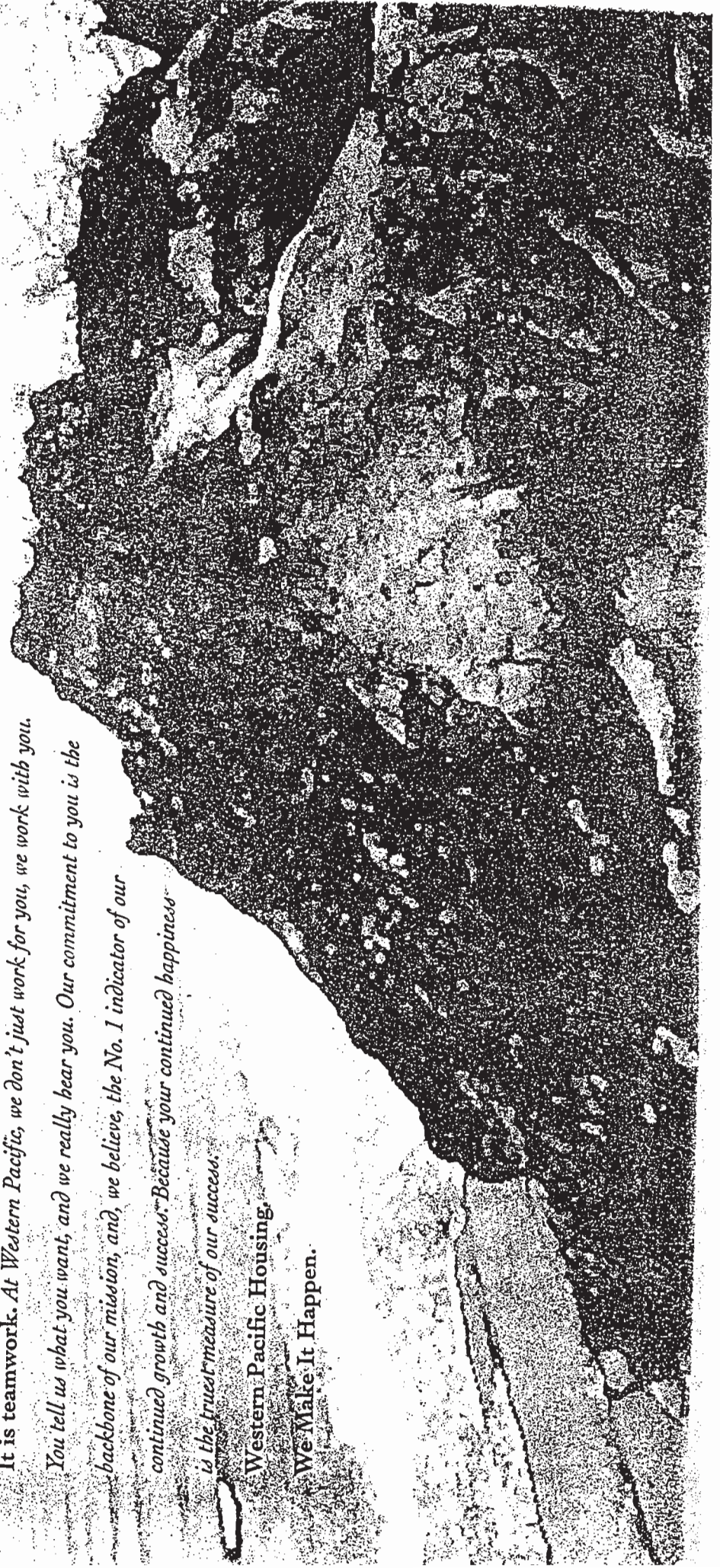
*backbone of our mission, and, we believe, the No. 1 indicator of our*

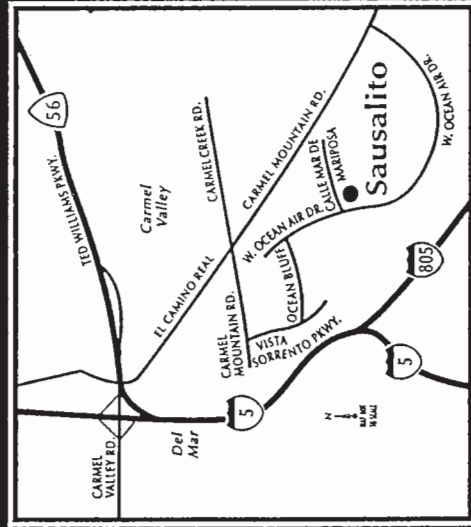
*continued growth and success. Because your continued happiness*

*is the truest measure of our success.*

**Western Pacific Housing,**

**We Make It Happen.**





**Western Pacific Housing**  
SAN DIEGO DIVISION

VISIT US ON THE WEB  
[westpacifichousing.com](http://westpacifichousing.com)

10715 Calle Mar de Mariposa San Diego, CA 92150 858.550.5744 Fax 858.550.5746