

---

S C R I P P S

---

W E S T V I E W



---

# F E A T U R E S

---

## KITCHEN:

- Custom Oak kitchen cabinetry
- Earthtone ceramic tile countertops with full backsplashes
- Briggs kitchen fixtures
- General Electric multi-cycle dishwasher
- In-sink-erator heavy duty garbage disposal
- Caloric pilotless gas range and oven with black glass door
- Plumbing for automatic ice-makers
- Luminous kitchen ceiling or track lighting
- Kitchen pantry (most units)
- Breakfast bar

## BATH:

- Jensen recessed medicine cabinets
- Briggs bath fixtures
- Private Master bath (some units)
- Sim-tile tub and shower combinations
- Cultured marble vanity top with full width mirror and luminous light valance

## OTHER FEATURES:

- Deadbolt Security system
- Your choice of decorator selected carpet and easy care vinyl floor coverings
- Individual water heaters
- Thermostatically controlled forced air heating and air conditioning
- Westlock antique brass door hardware
- Nutone smoke detector
- Vaulted ceilings (upstairs units)
- Bronze enamel window frames
- Prewired for Cable TV and telephones
- Compact washer/dryer hook-ups
- Large living room sliding glass doors
- Electrical outlets on balconies and patios
- Gas log fireplace
- Clerestory window or skylight (upper units)
- Large private covered patios or balconies with storage units
- Complete drapery package

## EXTERIORS:

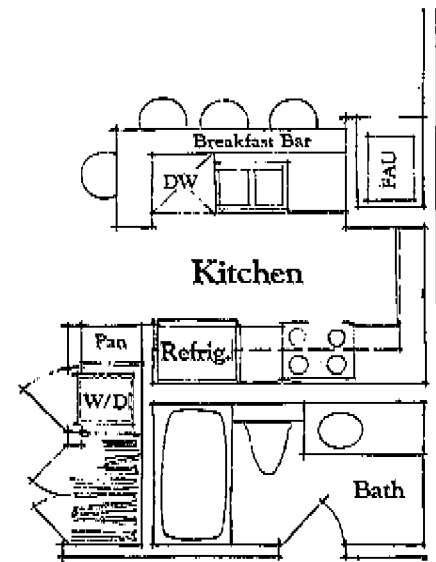
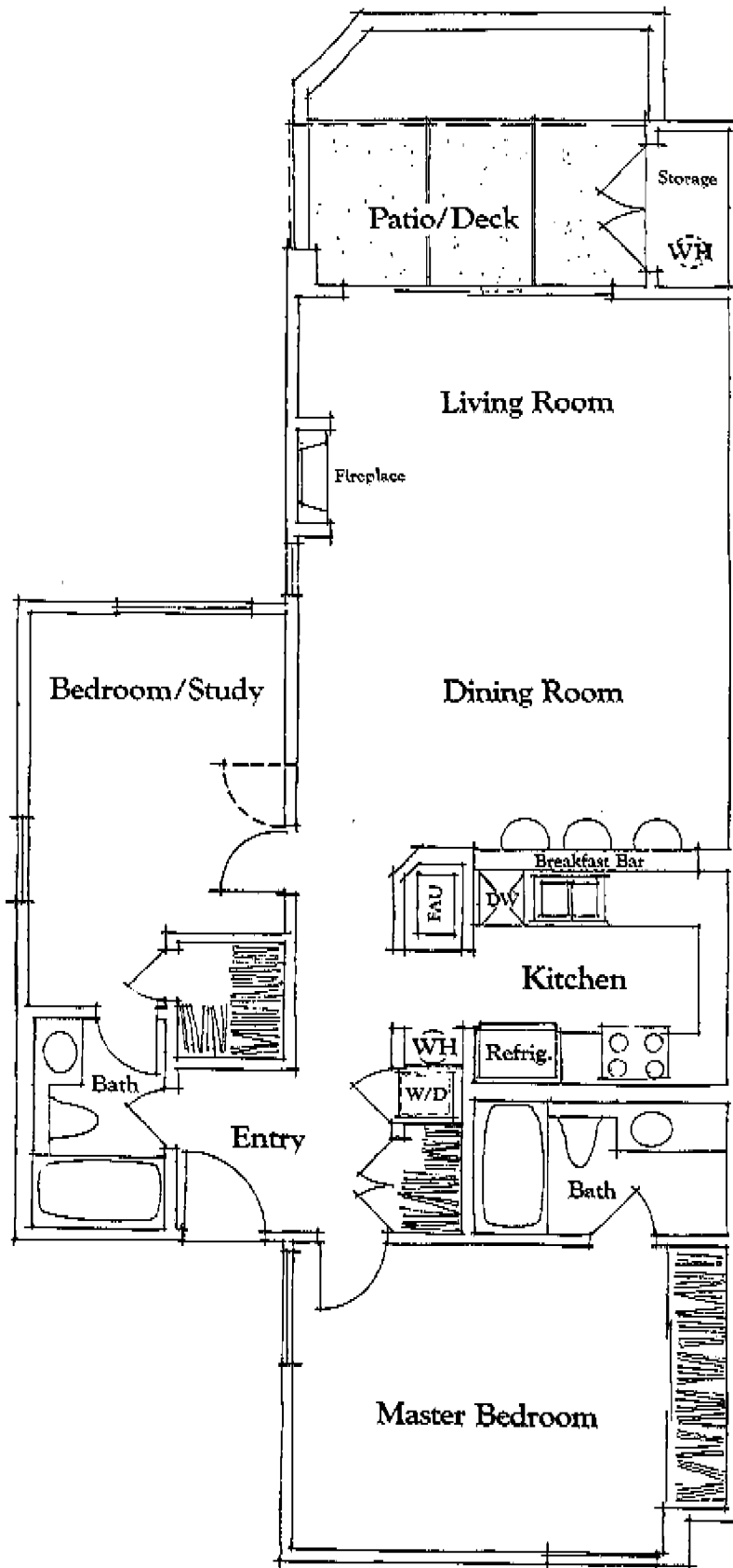
- Mediterranean style white stucco exterior
- Californian España Mission tile roofs
- Covered parking
- Illuminated walkways
- Color coordinated shade awnings

## RECREATIONAL AREAS:

- Two solar 20x40 swimming pools with spas
- Park-like setting with lush landscaping and expansive greenbelt areas

*In an effort to continually improve our floorplans and designs, Mike Foote Development Company reserves the right to change features, plans and specifications without notice.*

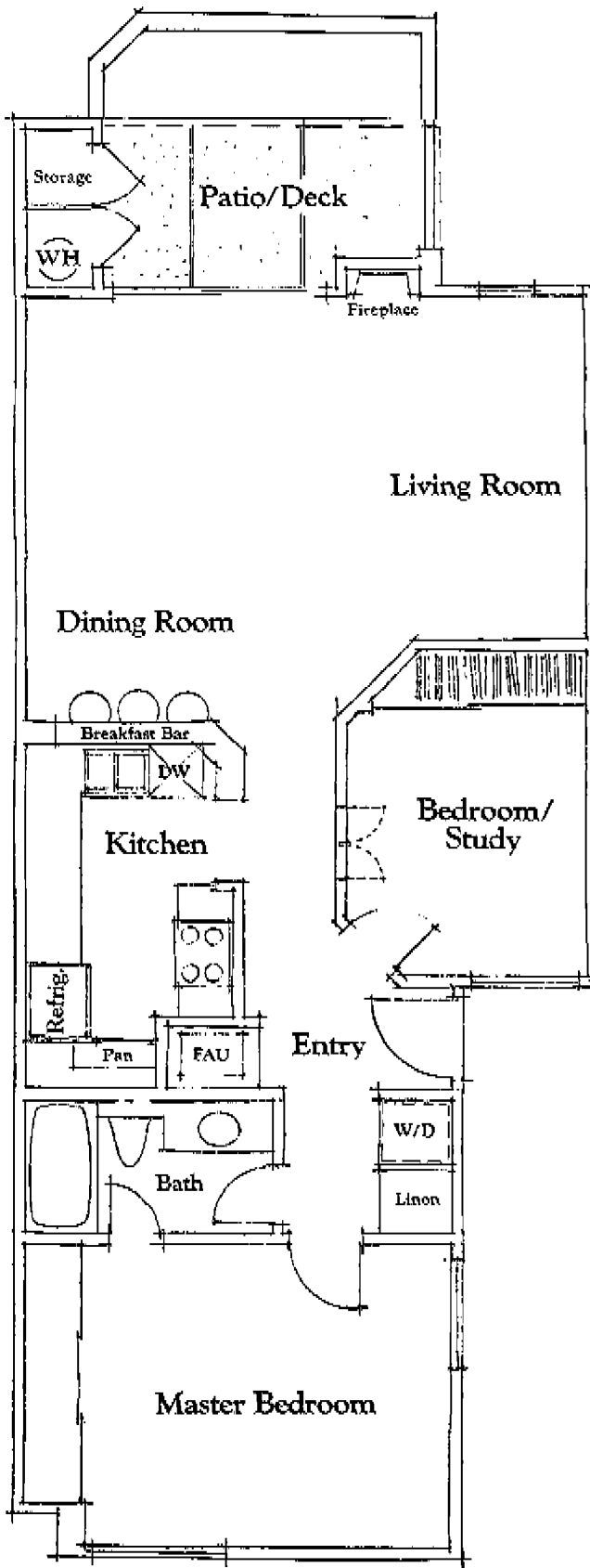




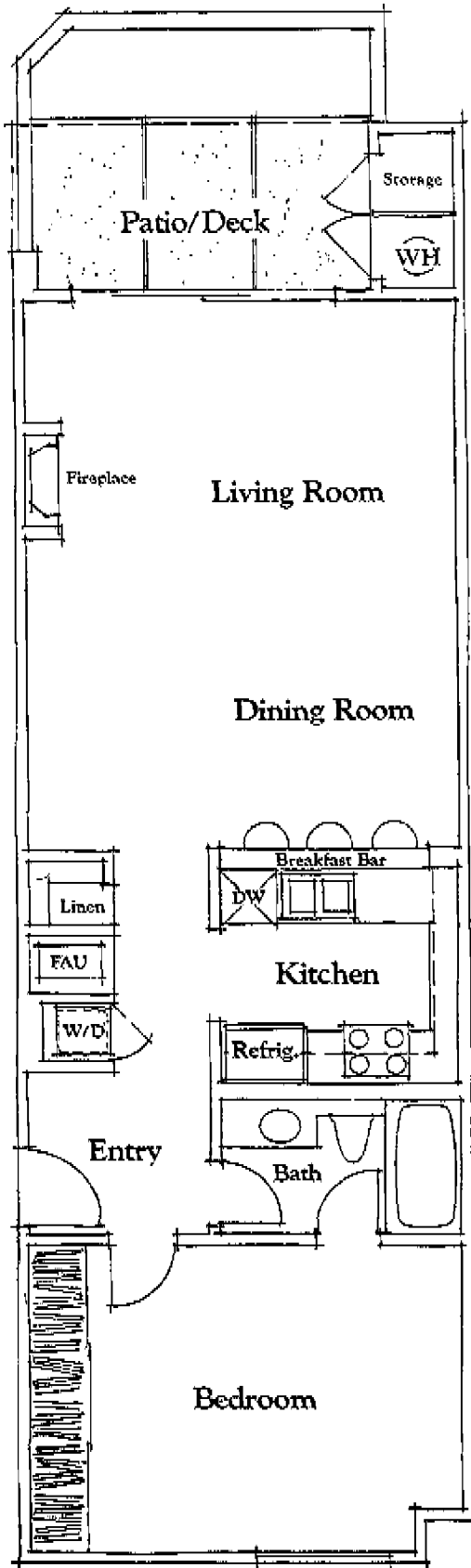
Alternate Kitchen



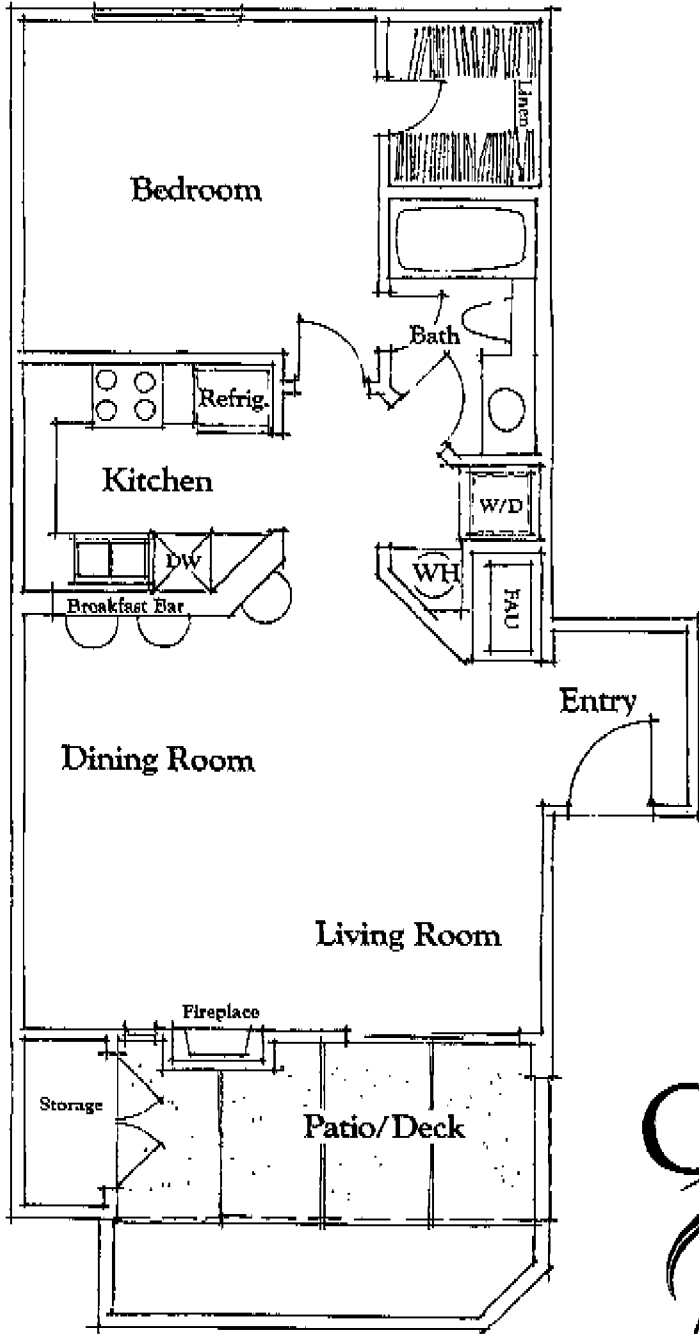
1046 sq. ft.



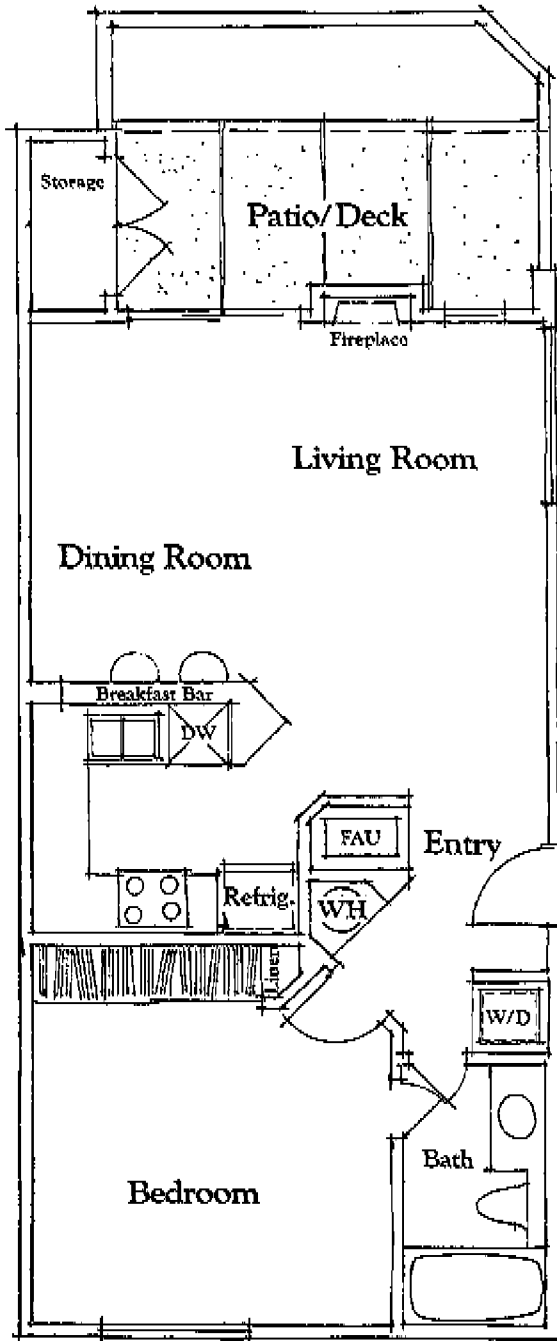
930 sq. ft.



806 sq. ft.



713 sq. ft.



678 sq. ft.