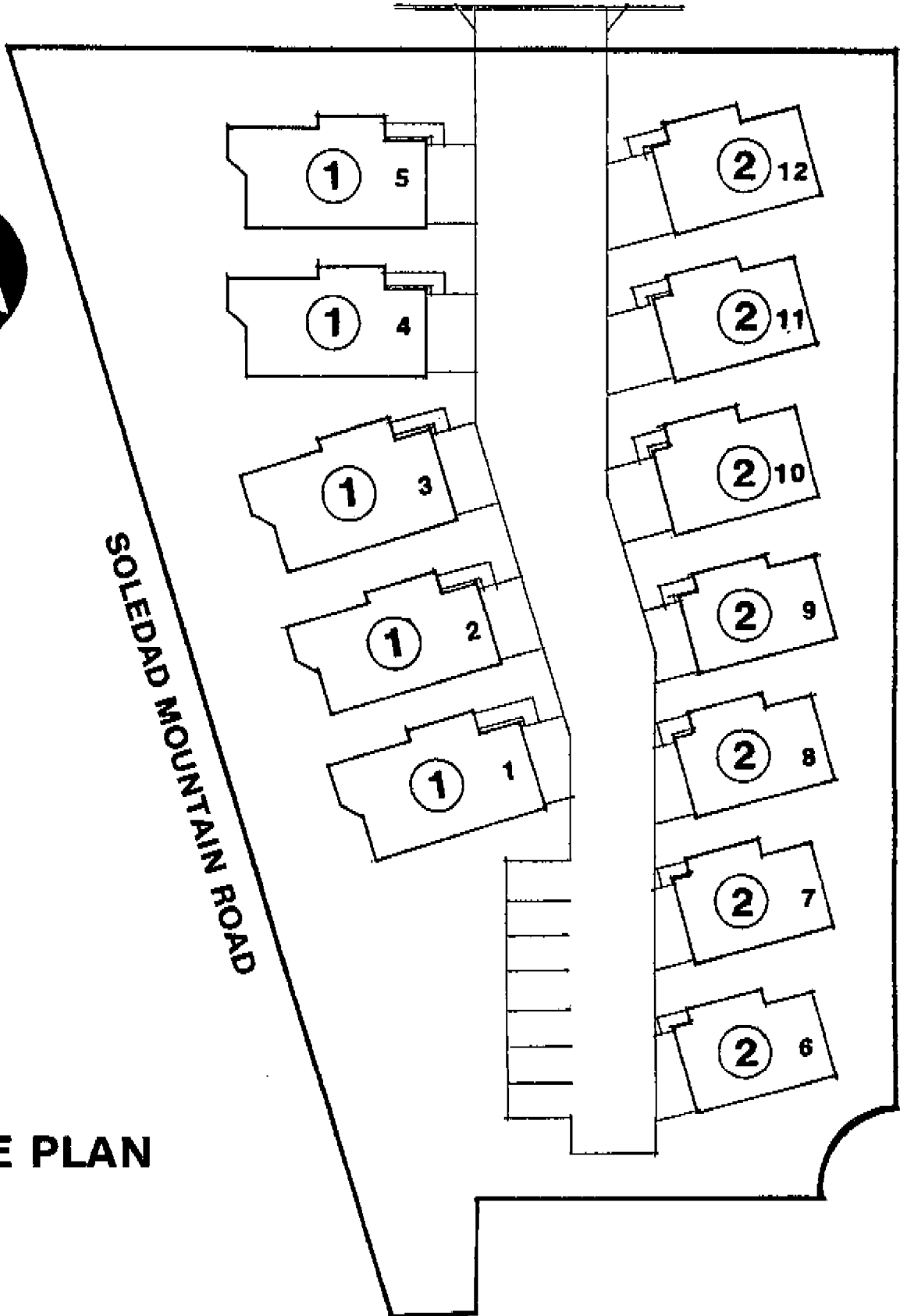


Soledad West View

LORING STREET ENTRANCE

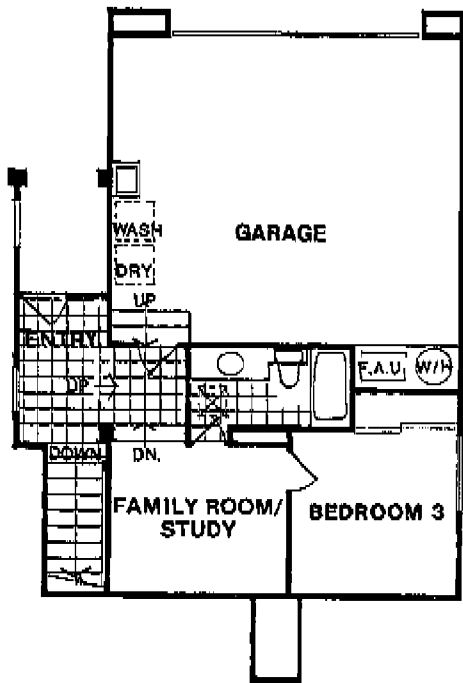


SITE PLAN

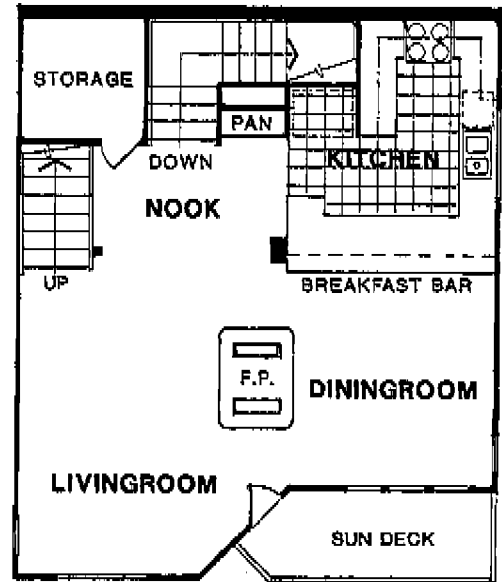
Soledad West View



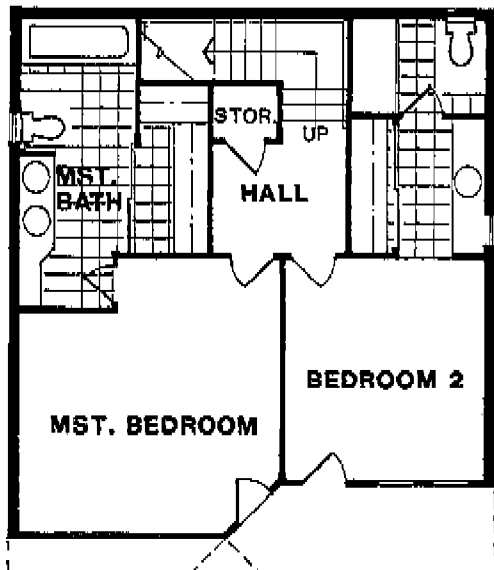
PLAN 1



TOP FLOOR PLAN



MIDDLE FLOOR PLAN



LOWER FLOOR PLAN

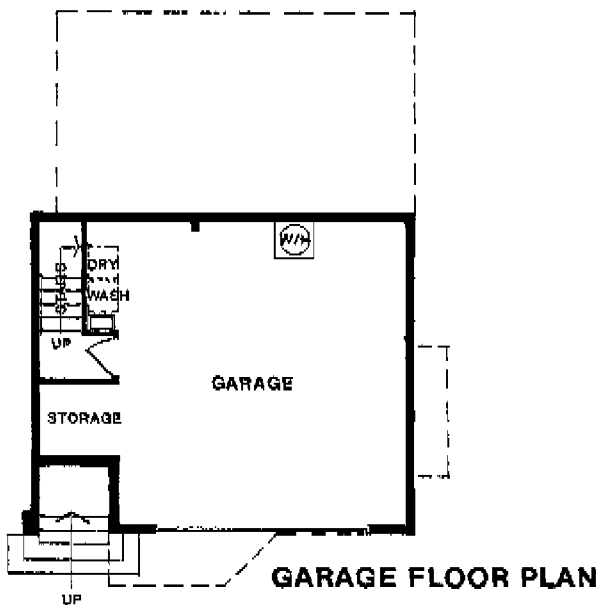
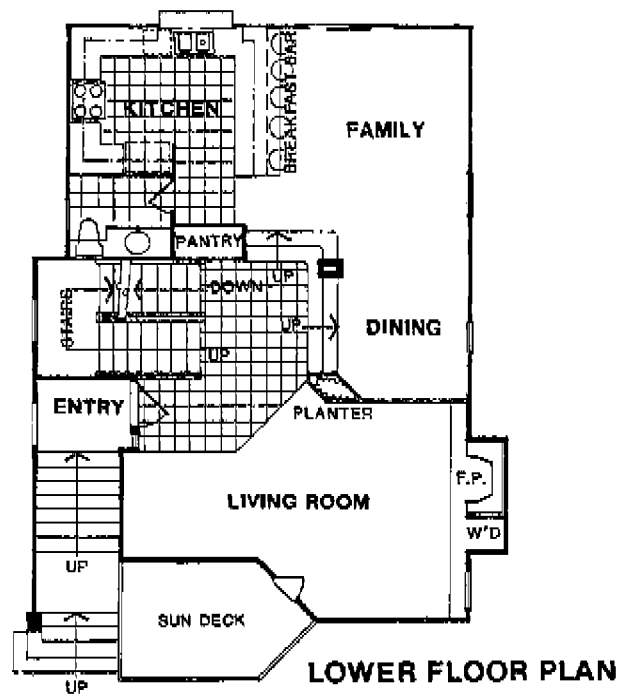
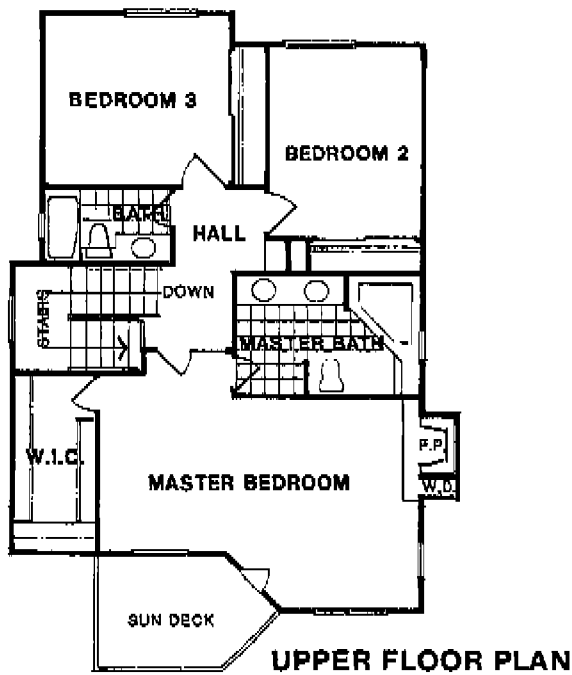
3 BEDROOM, 3 BATH

| | |
|--------------|---------------|
| Lower floor | 742 sq. ft. |
| Middle floor | 766 sq. ft. |
| Upper floor | 426 sq. ft. |
| <hr/> | |
| Total living | 1,934 sq. ft. |
| Garage | 494 sq. ft. |
| <hr/> | |
| Total area | 2,428 sq. ft. |

Soledad West View



PLAN 2



3 BEDROOM, 2½ BATH

| | |
|---------------------|----------------------|
| Lower floor plan | 971 sq. ft. |
| Upper floor plan | 1,073 sq. ft. |
| Total living | 2,044 sq. ft. |
| Garage | 663 sq. ft. |
| Total area | 2,707 sq. ft. |