

# StoneRidge

## Fairway Chateaus

The Augusta 1358 sq. ft. From \$62,100

The St. Andrews 1565 sq. ft. From \$57,600

The Pebble Beach 1568 sq. ft. From \$58,800

The Firestone 1654 sq. ft. From \$63,200

*The Spyglass - 1561 sq. ft.*

## Features

Living inside an adult-oriented golf course community has special benefits . . . serenity, distinction, elegance. But just as a good round of golf is relaxing and enjoyable, special features of your StoneRidge home enhance your leisure pleasure.

### Elegant Bedrooms

- Extra large with sitting area in master bedroom.
- Oversized and/or walk-in closets.
- Private dressing area separated from master bath.
- Large, full windows and/or sliding glass doors.

### Unique Garden Kitchens

- All electric, color-coordinated appliances include double-oven range with self-cleaning unit, trash compactor and dishwasher.
- Distinctive ash-exposed, self-closing veneer cabinets.
- Graceful luminous ceilings.
- Exquisite ceramic pass-through counters for ease of serving and cleaning. (most plans)
- Durable stainless steel double sinks with disposal.
- Special fixtures for soft water and refrigerator ice makers.

### Distinctive Bath

- Full length sofit lighting.
- Stain resistant cultured marble pullman wash basins.
- Cast iron tubs and ceramic tile shower.
- Windows for extra ventilation and comfort. (most plans)
- Premium decorator-selected fittings and fixtures including simulated cut glass faucets.
- Quality plate glass mirrors.
- His and Hers medicine cabinets. (most plans)

### Luxury Appointments

- Old World collection Conterra tile or Pomona Stone of glazed ceramics grace entries and fireplaces for enduring elegance.
- Wood and gas burning raised hearth fireplaces.
- Window seats (most plans).

- Sliding glass doors (most plans).
- Two car or oversized garages — some with simulated stained glass windows and pre-wired for garage door openers.
- Recreation room, heated swimming pool, therapy (Jacuzzi) pool for the ultimate in socializing or just plain relaxation.
- A recreational vehicle parking area which doesn't disturb the views.
- Designer selection of fine carpeting, tile for entry, fireplace and linoleum for kitchen area.
- Wet bars. (most plans)

### Hidden Construction Features for Comfort and Value

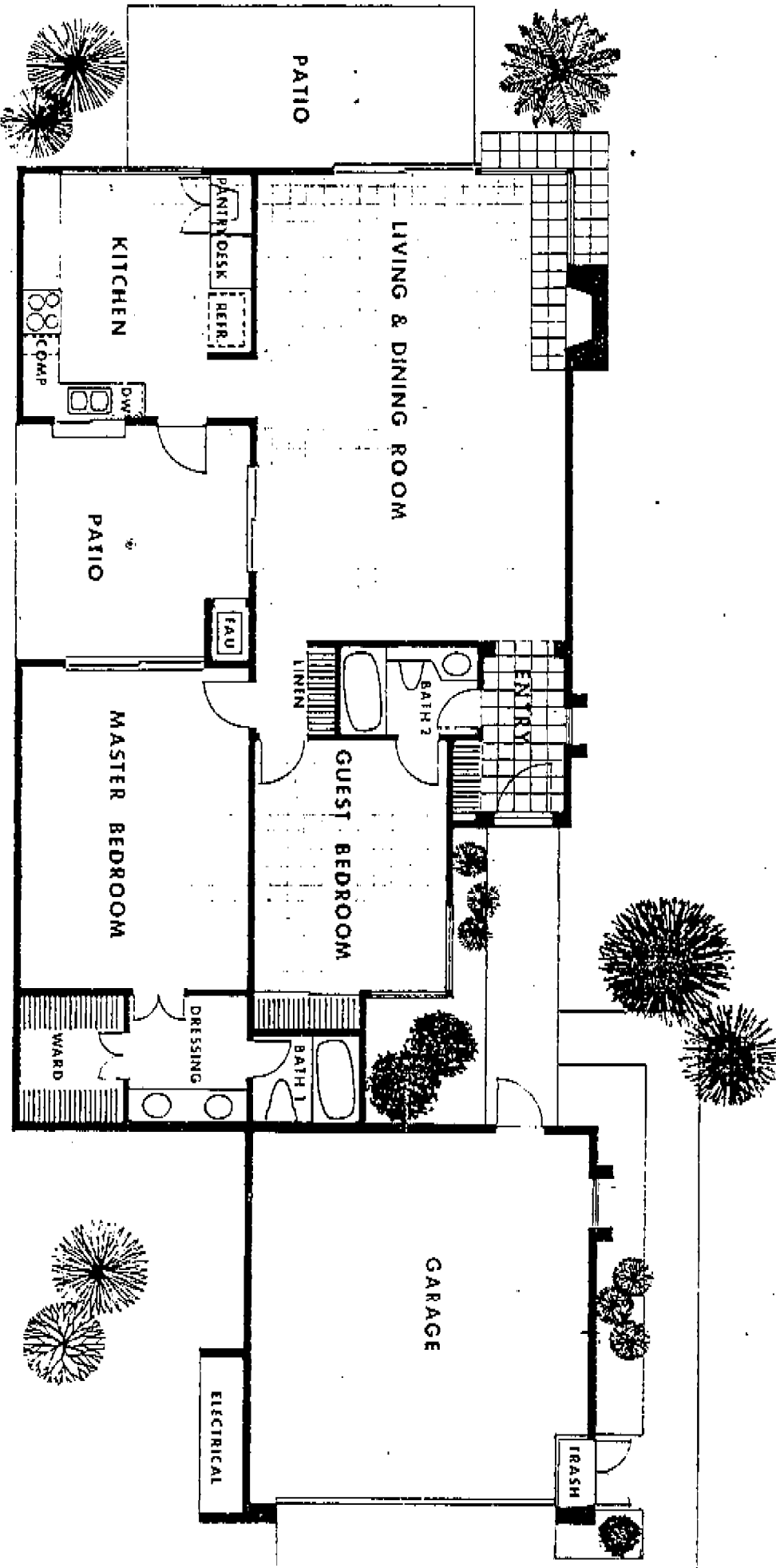
- Gas forced-air heating and air conditioning.
- Full insulation in ceiling and walls.
- Bronze colored window frames and door openings for long-lasting beauty.
- Underground utilities.
- Dual lock, extra heavy front doors for added beauty and security.
- Pre-wiring for cable TV.
- Concrete tile roofs.

### And Ease of Maintenance

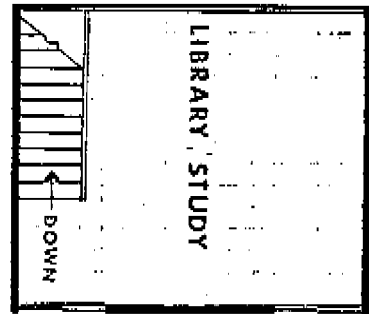
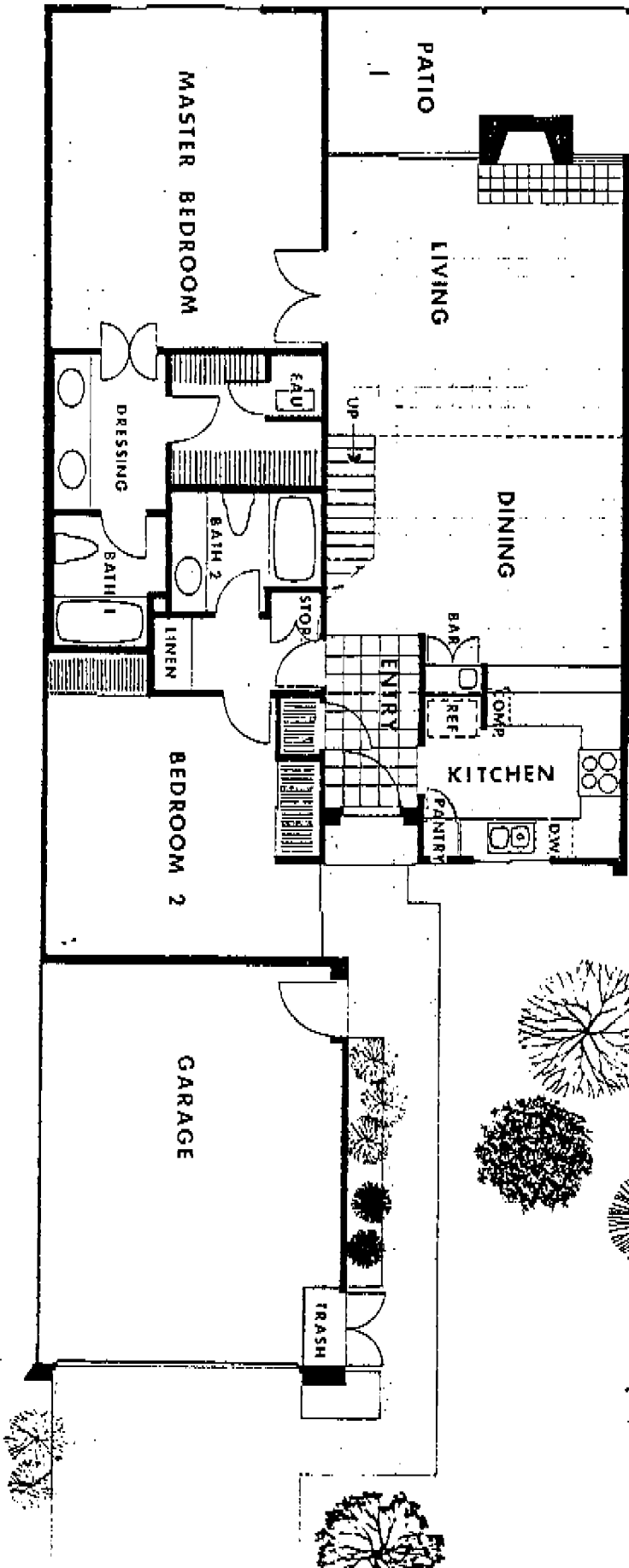
- Homeowner fee provides maintenance for all common areas.
- Lawn maintenance.
- Water.
- Sewer.
- Trash pick up.
- Insurance.
- Accounting.

Living in your StoneRidge home gives you the same feeling as making a hole-in-one.

# The Augusta

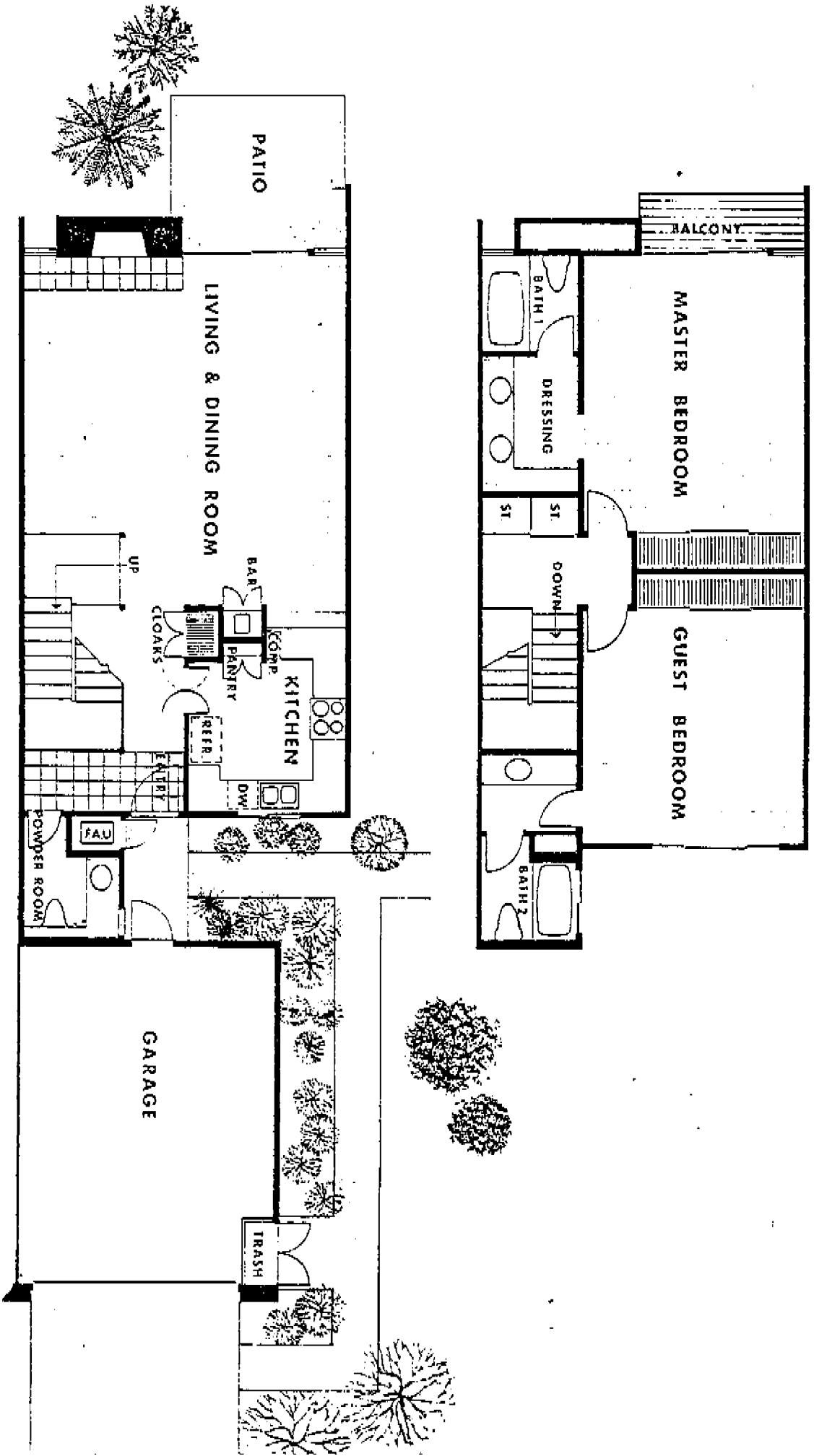


# St. Andrews

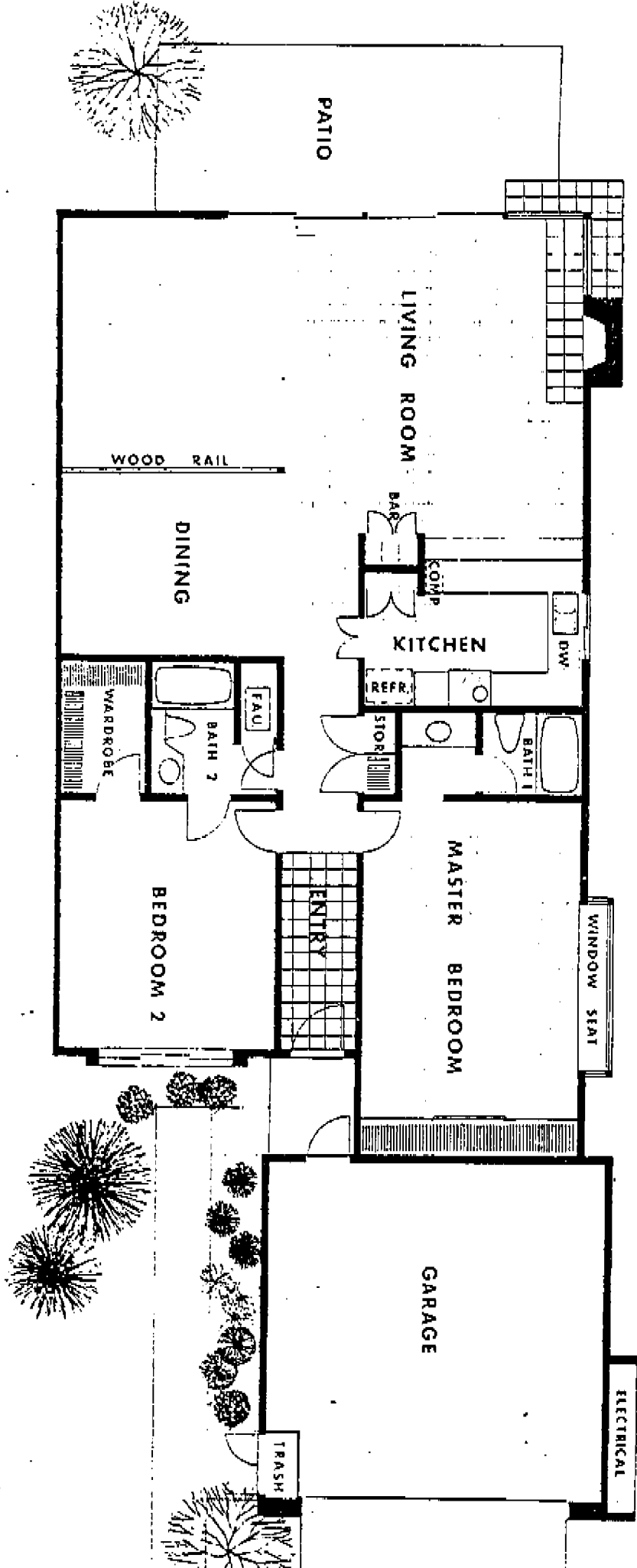


1568 sqft.

# Pebble Beach



# The Firestone



# The Spyglass

One of the toughest golf courses in the United States — but certainly one of the most interesting! Its namesake, the Spyglass at StoneRidge, is equally interesting as a double unit: A complete unit upstairs with a balcony, and one complete unit downstairs with a corresponding patio.

Fabulous views of the nearby mountains and the luxurious Green Valley flood this 1561 square foot townhome. Featured in this unit is a huge master bedroom, fireplaces in both units, a comfortable den, two baths, cloak rooms and roomy garages. The golf course is challenging — but highly interesting. So is the Spyglass at StoneRidge.

