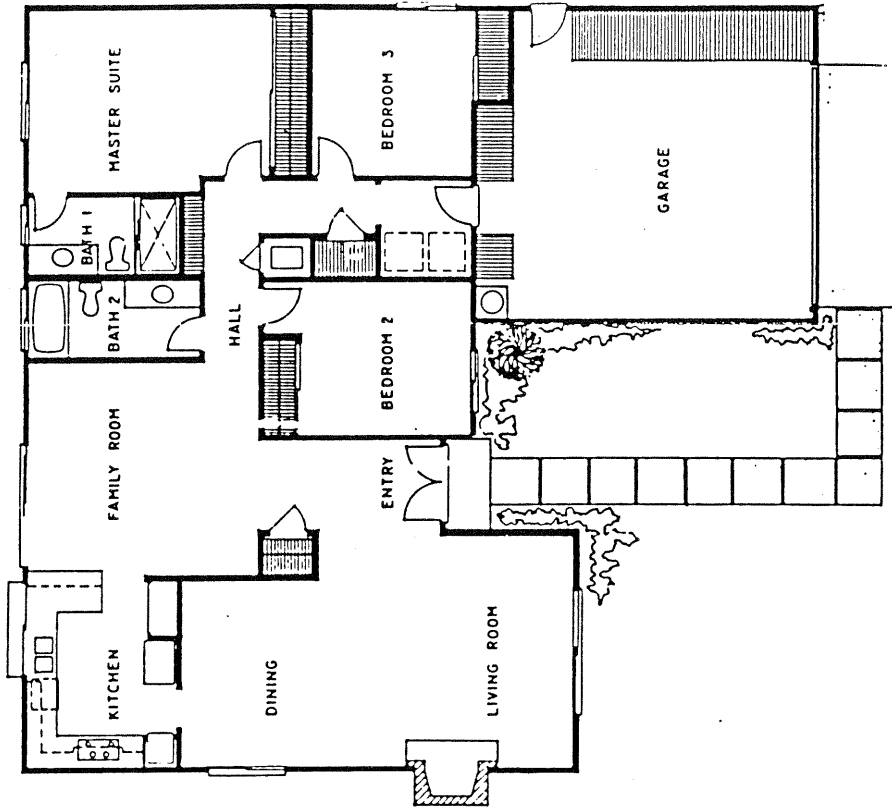
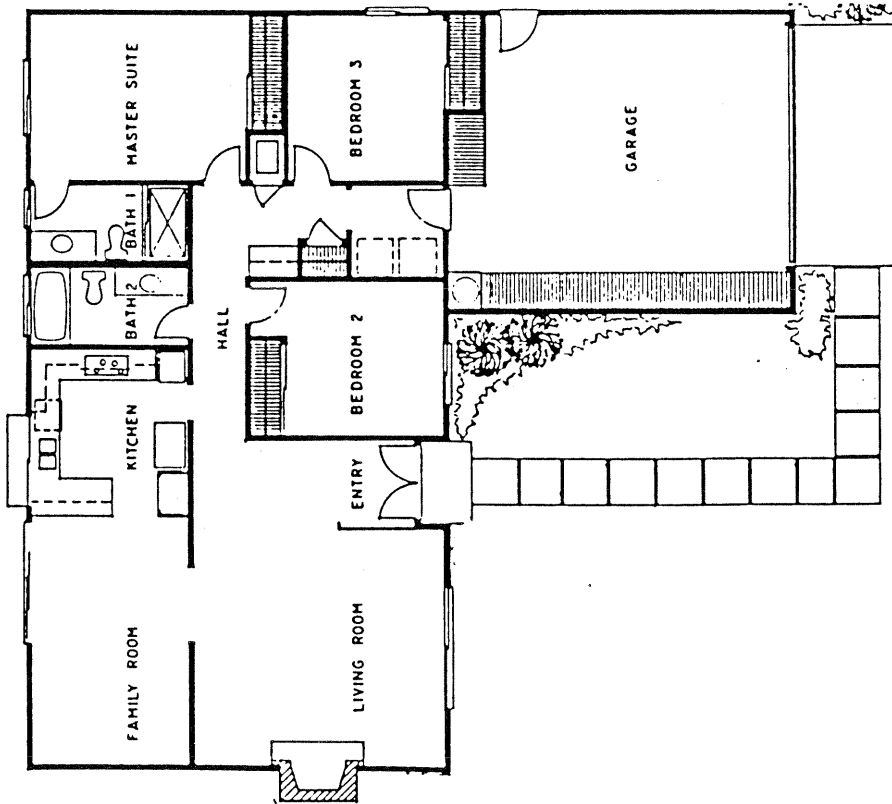


Summerfield

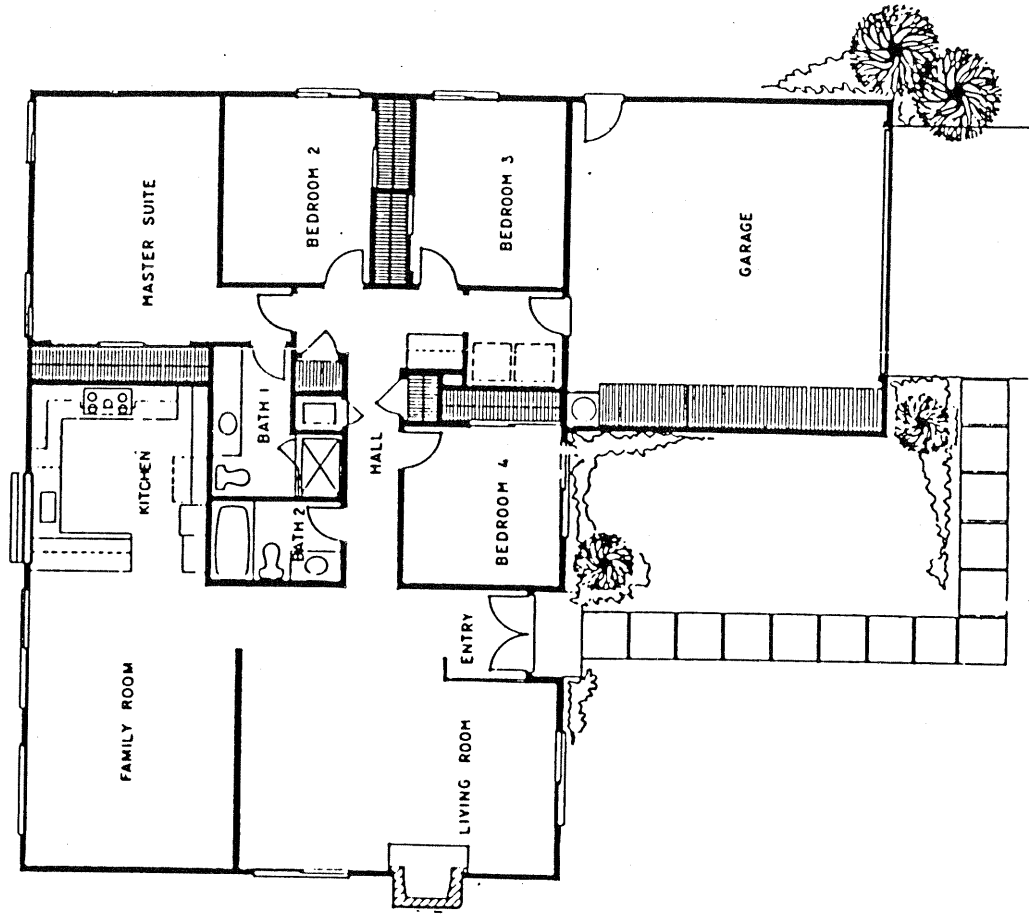
in Encinitas



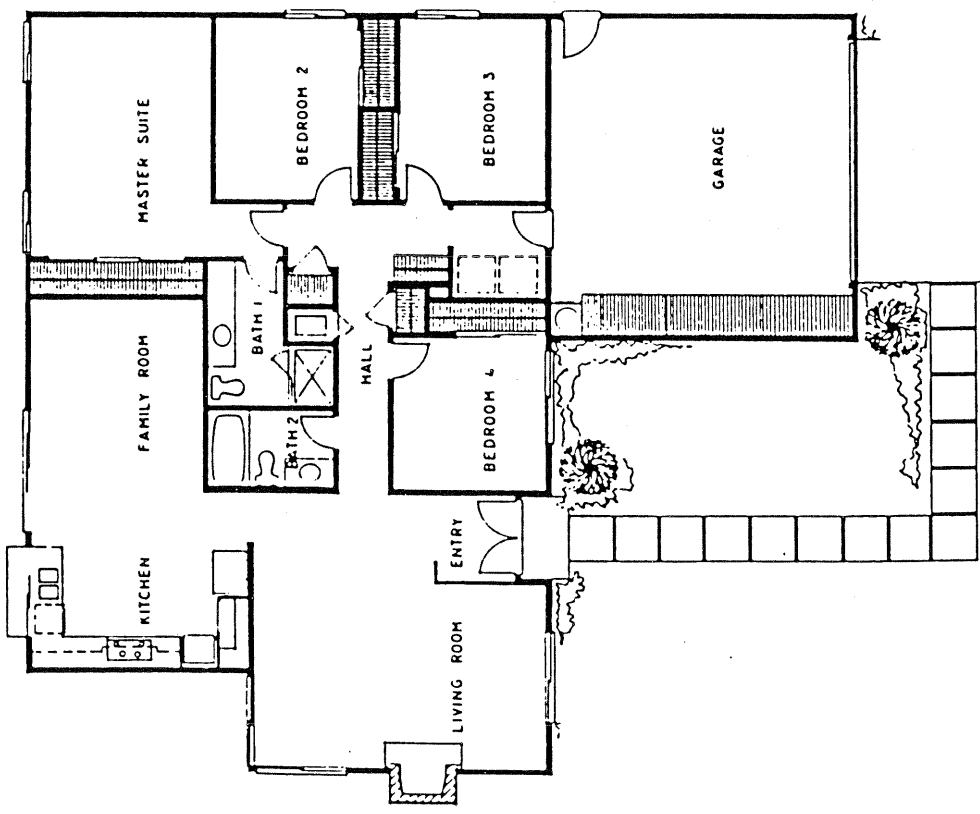
SUMMERFIELD
 Model: 895-LA JOLLA
 Area: 1246 B/T Code: SMF
 Approximate SQ/FT: 1620



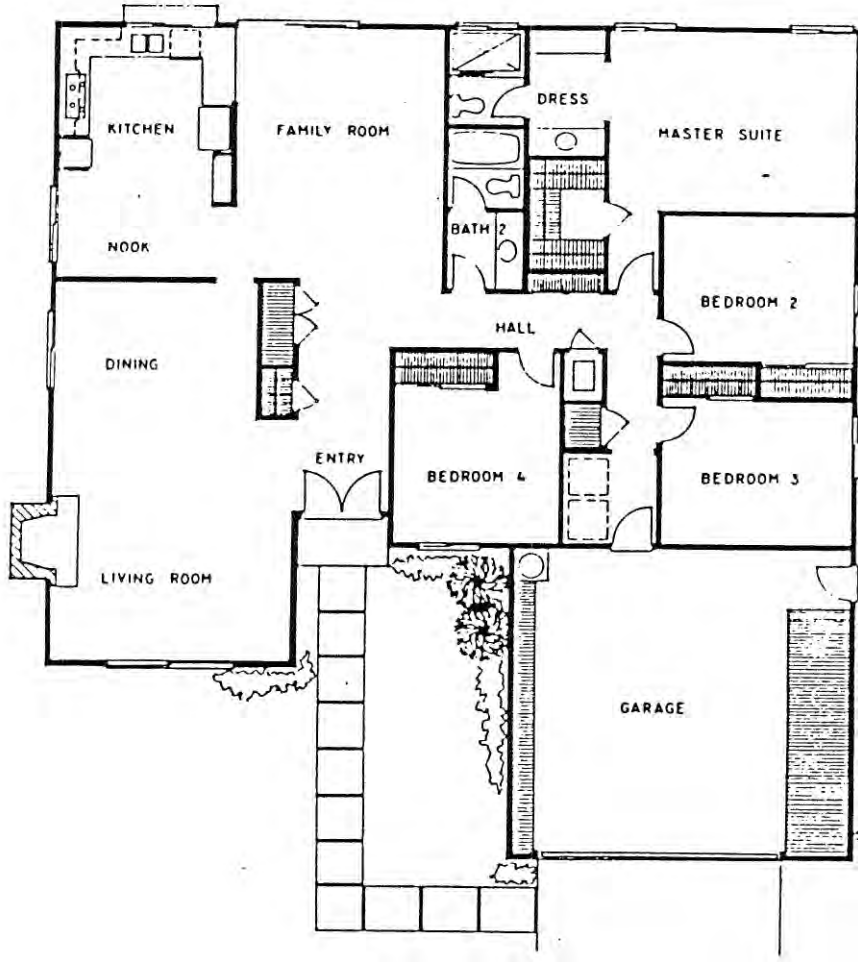
SUMMERFIELD
 Model: 504-NEWPORT
 Area: 1246 B/T Code: SMF
 Approximate SQ/FT: 1406



SUMMERFIELD
 Model: 1836-MONTEREY ALT.
 Area: 1246 B/T Code: SMF
 Approximate SQ/FT: 1733



SUMMERFIELD
 Model: 836-MONTEREY
 Area: 1246 B/T Code: SMF
 Approximate SQ/FT: 1733



SUMMERFIELD

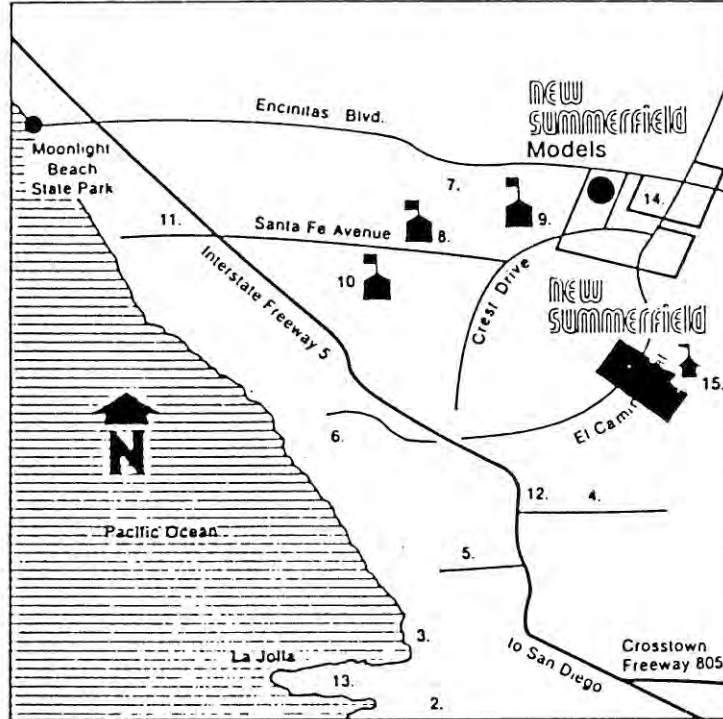
Model: 637-PALOS VERDE

Area: 1246 B/T Code: SMF

Approximate SQ/FT: 1246

Driving Instructions:

From Interstate 5, take Encinitas Boulevard approximately one mile east to new Summerfield Models which are located at the southwest corner of El Camino Real and Encinitas Boulevard.



- | | |
|--|------------------------------------|
| 1. You are here | 8. Ocean Knoll Elementary School |
| 2. Mission Bay | 9. Oak Crest Jr. High School |
| 3. Torrey Pines Park and Municipal Golf Course | 10. San Dieguito Union High School |
| 4. Lomas Santa Fe Golf Course | 11. Santa Fe Plaza Shopping Center |
| 5. Del Mar Race Track | 12. Lomas Santa Fe Shopping Center |
| 6. San Elijo Lagoon | 13. La Jolla |
| 7. Boys Club | 14. Shopping center |
| | 15. School Site |

SUMMERFIELD

*Site Plan - B/T: SMF
 Caution: There may be additions or changes to these site plans*